

VOLTAGE CONTROLLED OSCILLATOR

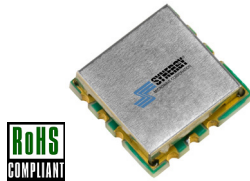
SURFACE MOUNT MODEL: DCO80100-3

OPTIMIZED BANDWIDTH

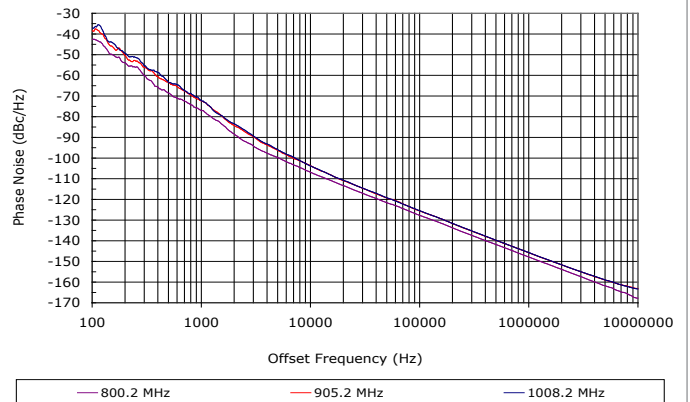
800 - 1000 MHz

FEATURES:

- ▶ Miniature Size, Surface Mount (0.3" x 0.3")
- ▶ Superb Phase Noise Performance
- ▶ Fast Tuning
- ▶ Planar Resonator Construction



Phase Noise



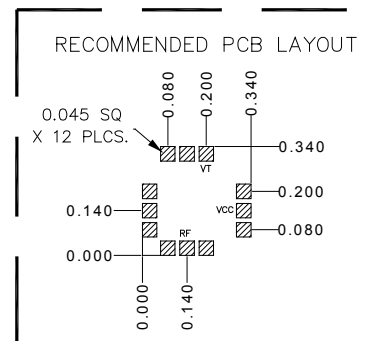
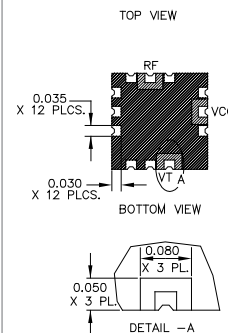
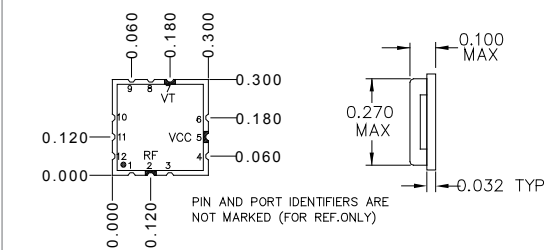
SPECIFICATIONS (Rev. B 01/09/14)

Frequency	800 - 1000 MHz	
Tuning Voltage	0 - 3.0 V	
Bias Voltage	+3 VDC @ 15 mA (Max.)	
Output Power	+1 dBm (Min.)	
Tuning Sensitivity	70 - 105 MHz/V (Typ.)	
Output Impedance	50 Ohms (Nom.)	
Harmonic Suppression	12 dB (Typ.)	
Frequency Pulling	3.5 MHz (Typ. @ 1.75:1 VSWR)	
Frequency Pushing	15 MHz/V (Typ.)	
Tuning Port Capacitance	45 pF (Typ.)	
Typical Phase Noise	Offset	dBc/Hz
	10 kHz	-105
	100 kHz	-126
Operating Temperature Range	-40 to +85 °C	

Absolute Maximum Ratings

Storage Temp. Range	-55 to +125 °C
Bias Voltage	+3.3 V
Tuning Voltage	+8 V
DC Voltage Applied to RF Out	± 25 V

Package # 343



PACKAGE MOUNTING: SEE APPLICATION NOTE AN7300 & AN7302

TOLERANCES ON THREE DECIMAL PLACES = ± 0.015

DIMENSIONS ARE IN INCHES. ALL UNLABELED PINS TO BE GROUNDING.

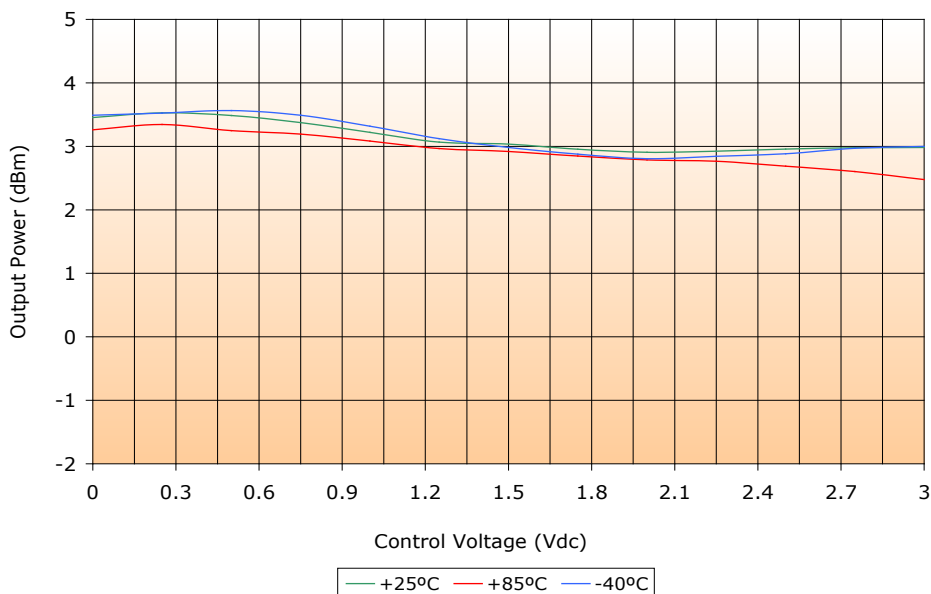
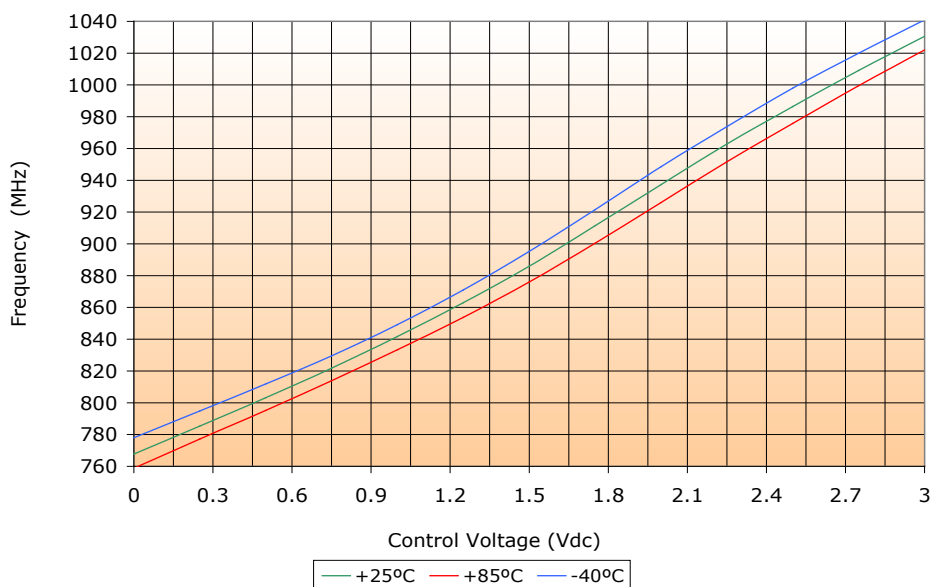
VOLTAGE CONTROLLED OSCILLATOR

SURFACE MOUNT MODEL: DCO80100-3

OPTIMIZED BANDWIDTH

800 - 1000 MHz

PERFORMANCE PLOTS



VOLTAGE CONTROLLED OSCILLATOR

SURFACE MOUNT MODEL: DCO80100-3

OPTIMIZED BANDWIDTH

800 - 1000 MHz

PERFORMANCE PLOTS

