

# VOLTAGE CONTROLLED OSCILLATOR

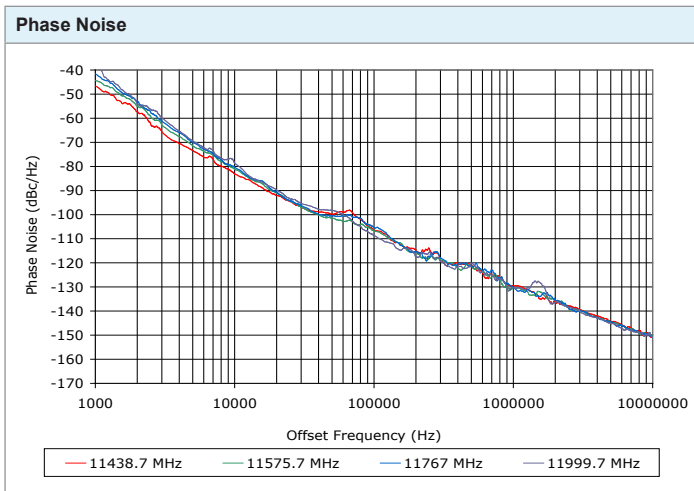
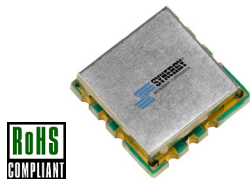
## SURFACE MOUNT MODEL: DXO11441200-5

**X-BAND OPTIMIZED BANDWIDTH**

**11440 - 12000 MHz**

**FEATURES:**

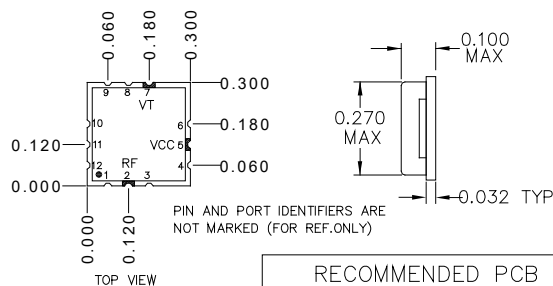
- ▶ Miniature Size, Surface Mount (0.3" x 0.3")
- ▶ Low Phase Noise Performance
- ▶ Fast Tuning
- ▶ Planar Resonator Construction



**SPECIFICATIONS (Rev. B 05/18/16)**

Frequency	11440 - 12000 MHz
Tuning Voltage	See table below.
Bias Voltage	+5 VDC @ 30 mA (Max.)
Output Power	+2 dBm (Min.)
Tuning Sensitivity	42 - 72 MHz/V (Typ.)
Output Impedance	50 Ohms (Nom.)
Harmonic Suppression	28 dB (Typ.)
Frequency Pulling	25 MHz (Typ. @ 1.75:1 VSWR)
Frequency Pushing	12 MHz/V (Typ.)
Tuning Port Capacitance	2 pF (Typ.)
Phase Noise @ 10 kHz	-82 dBc/Hz (Typ.)
Operating Temperature Range	-40 to +85 °C

Package # 364

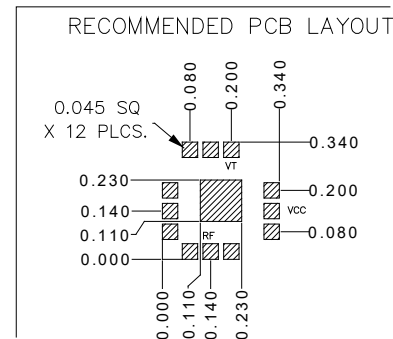
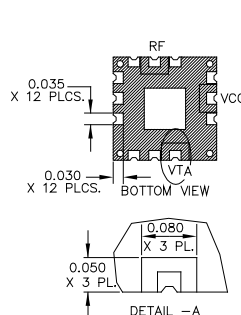


**Guaranteed Tuning Specifications**

Tuning Voltage ( V )	Frequency ( MHz )
0.5	11440 (Max.)
15	12000 (Min.)

**Absolute Maximum Ratings**

Storage Temp. Range	-55 to +125 °C
Bias Voltage	+5.5 V
Tuning Voltage	+16V
DC Voltage Applied to RF Out	± 25 V



DIMENSIONS ARE IN INCHES.  
 TOLERANCES ON THREE DECIMAL PLACES= ± 0.015  
 ALL UNLABELED PINS TO BE GROUNDED.  
 PACKAGE MOUNTING: SEE APPLICATION NOTE AN7300 & AN7302

Copyright © Synergy Microwave Corporation  
 201 McLean Boulevard • Paterson, New Jersey 07504 USA  
 Tel: (973) 881-8800 • Fax: (973) 881-8361  
 E-Mail: sales@synergymwave.com • Website: http://www.synergymwave.com  
 Patents : http://www.synergymwave.com/patents



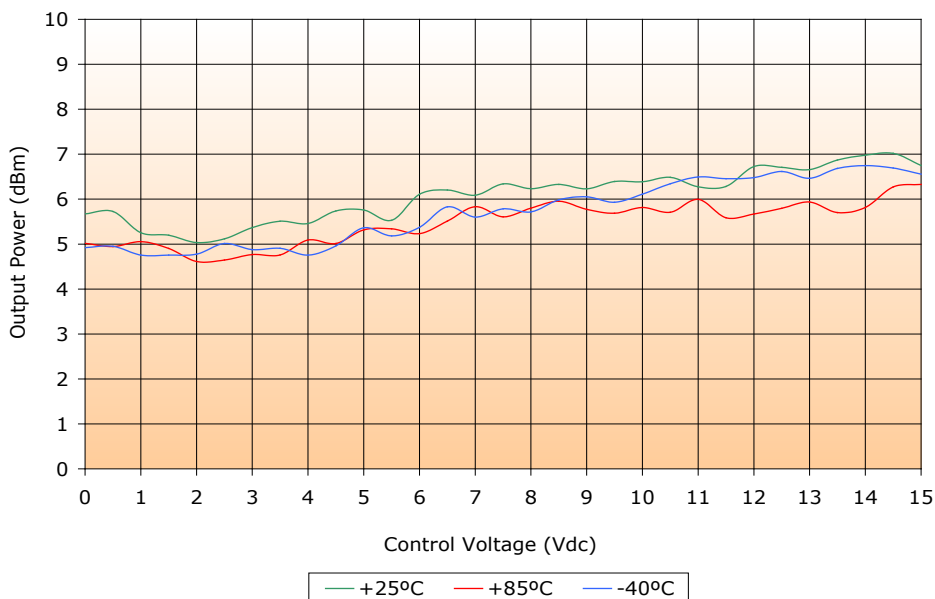
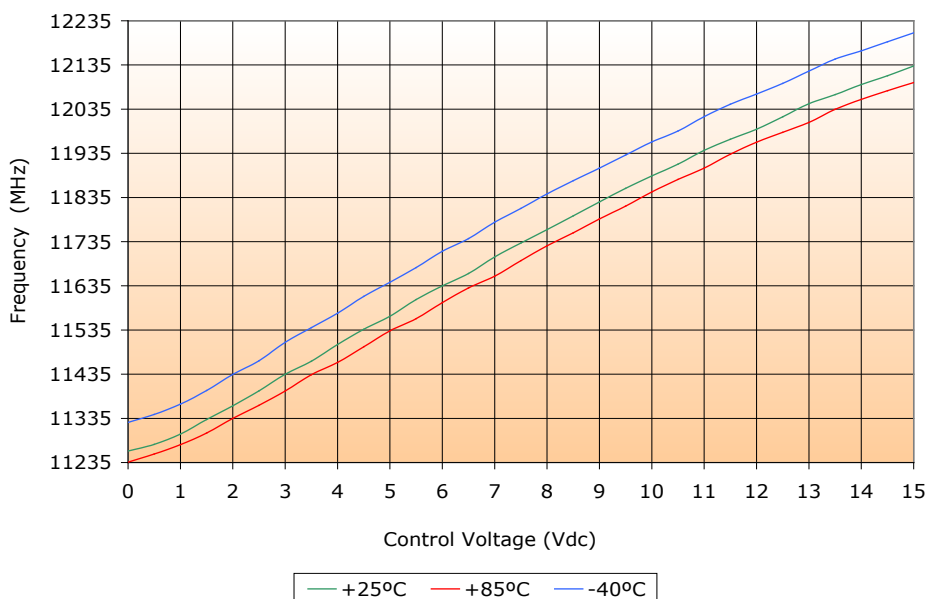
# VOLTAGE CONTROLLED OSCILLATOR

## SURFACE MOUNT MODEL: DXO11441200-5

X-BAND OPTIMIZED BANDWIDTH

11440 - 12000 MHz

PERFORMANCE PLOTS



# VOLTAGE CONTROLLED OSCILLATOR

## SURFACE MOUNT MODEL: DXO11441200-5

X-BAND OPTIMIZED BANDWIDTH

11440 - 12000 MHz

PERFORMANCE PLOTS

