

VOLTAGE CONTROLLED SAW OSCILLATOR

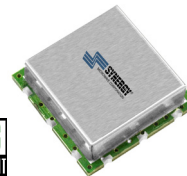
SURFACE MOUNT MODEL: VCISO-OC12-1

OPTIMIZED BANDWIDTH

622.08 MHz

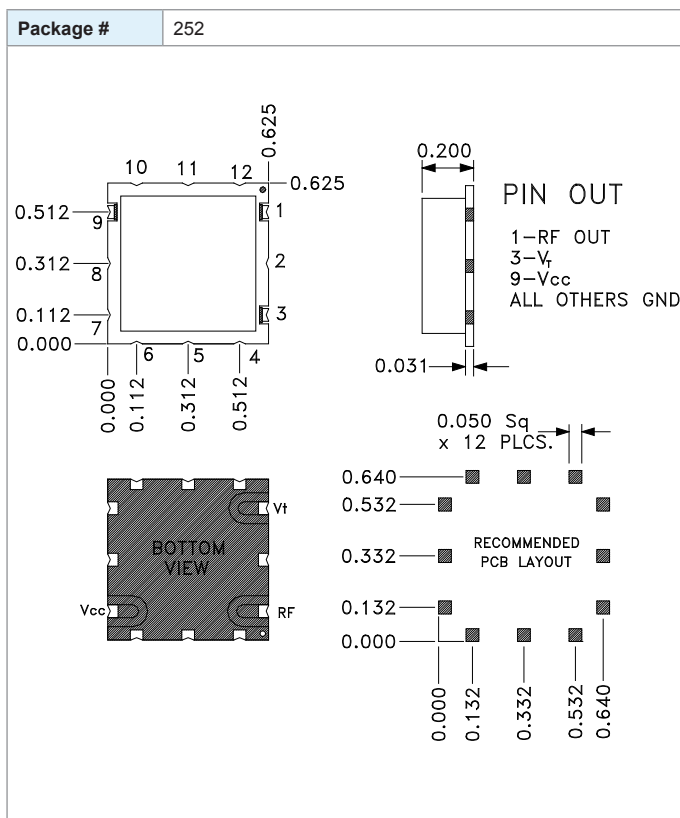
FEATURES:

- ▶ Exceptional Phase Noise (Low Jitter)
- ▶ Superb Immunity To Microphonics
- ▶ Tuning Linearity <3:1
- ▶ Suitable For Automated Assembly
- ▶ Well Suited For LMDS, SONET, Digital Radio With Higher Order QAM Applications
- ▶ Compact Size (0.625" x 0.625")



SPECIFICATIONS (Rev. A 10/24/12)

Frequency	622.08 MHz												
Tuning Range	200 ppm												
Tuning Voltage	1 to 12 V												
Supply Voltage	+5 V @ 96 mA												
Output Power	+10 dBm (Typ.)												
Output Impedance	50 Ohms												
Harmonic Rejection	30 dB (Typ.) / 20 dB (Min.)												
VSWR	1.5:1												
Typical Phase Noise	<table border="1"> <thead> <tr> <th>Offset</th> <th>dBc/Hz</th> </tr> </thead> <tbody> <tr> <td>@ 100 Hz</td> <td>-80 dBc/Hz</td> </tr> <tr> <td>@ 1 kHz</td> <td>-100 dBc/Hz</td> </tr> <tr> <td>@ 10 kHz</td> <td>-130 dBc/Hz</td> </tr> <tr> <td>@ 100 kHz</td> <td>-155 dBc/Hz</td> </tr> <tr> <td>@ 300 kHz</td> <td>-162 dBc/Hz</td> </tr> </tbody> </table>	Offset	dBc/Hz	@ 100 Hz	-80 dBc/Hz	@ 1 kHz	-100 dBc/Hz	@ 10 kHz	-130 dBc/Hz	@ 100 kHz	-155 dBc/Hz	@ 300 kHz	-162 dBc/Hz
	Offset	dBc/Hz											
	@ 100 Hz	-80 dBc/Hz											
	@ 1 kHz	-100 dBc/Hz											
	@ 10 kHz	-130 dBc/Hz											
@ 100 kHz	-155 dBc/Hz												
@ 300 kHz	-162 dBc/Hz												
Operating Temperature Range	-20 to +70 °C												



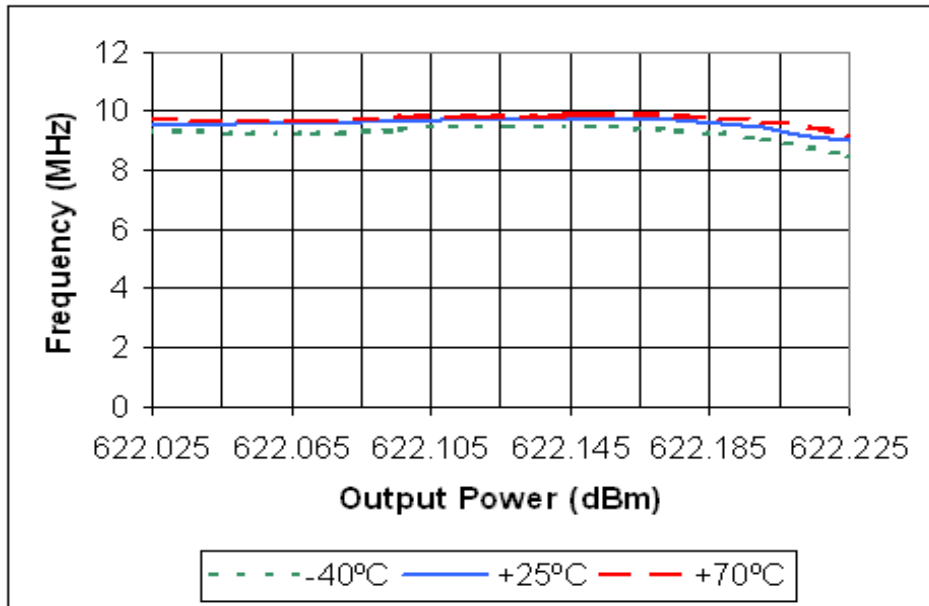
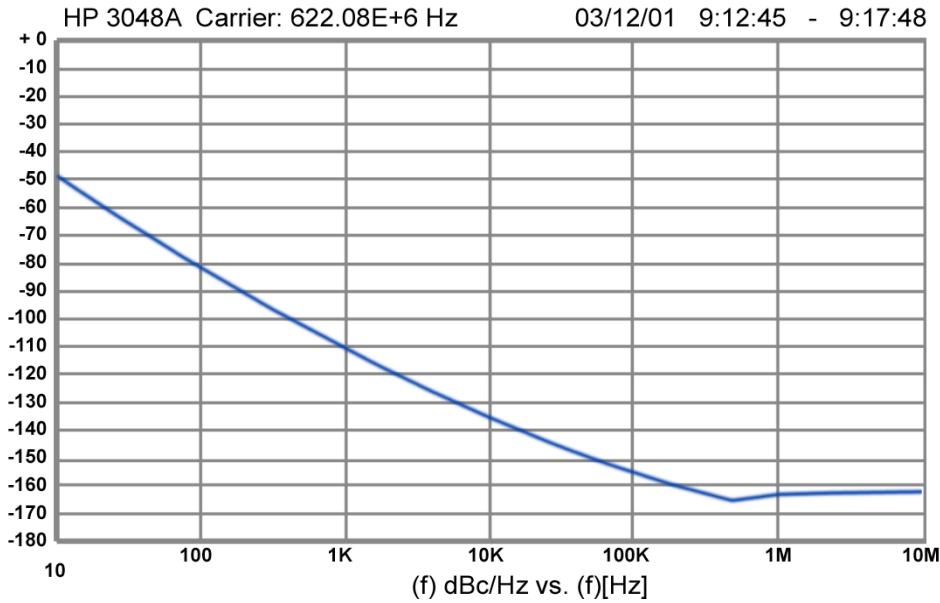
This product is manufactured under one or more of the following patents: Approved: 5,160,810; 5,122,621; 5,390,349; 5,416,449; 5,650,754; 5,805,431; 6,525,623; 6,850,575; 7,088,189; 7,180,381; 7,196,591; 7,262,670; 7,265,642; 7,292,113; 7,365,612; 7,495,525; 2,548,311; 2,548,317; 7,545,229; 7,580,693; 7,586,381; 7,605,670; 7,636,021; 2,533,623 | Pending: 60/493075; 60/501371 & 60/501790; 60/527957 & 60/528670; 60/563481; 60/564173; 60/589090; 60/601823; 60/605791; EV31369834; 11/259766; 60/622485 & 60/710310; 10/937525/60/736901; 60/732787; 7,495,525; 2,548,311; 2,548,317; 7,545,229; 2,563,174; 7,580,693; 7,612,296; 2,524,751

VOLTAGE CONTROLLED SAW OSCILLATOR SURFACE MOUNT MODEL: VCISO-OC12-1

OPTIMIZED BANDWIDTH

622.08 MHz

PERFORMANCE PLOTS



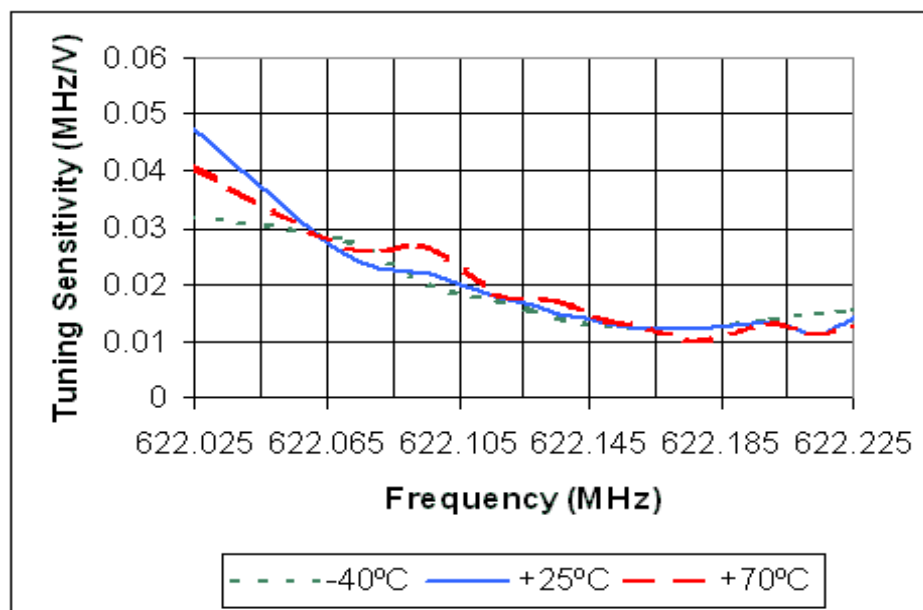
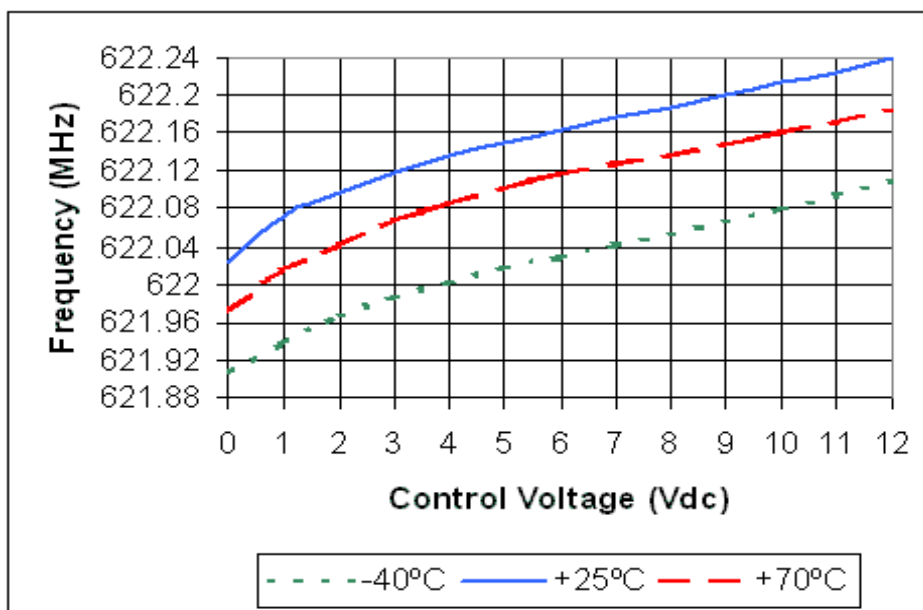
This product is manufactured under one or more of the following patents: Approved: 5,160,810; 5,122,621; 5,390,349; 5,416,449; 5,650,754; 5,805,431; 6,525,623; 6,850,575; 7,088,189; 7,180,381; 7,196,591; 7,262,670; 7,265,642; 7,292,113; 7,365,612; 7,495,525; 2,548,311; 2,548,317; 7,545,229; 7,580,693; 7,586,381; 7,605,670; 7,636,021; 2,533,623 | Pending: 60/493075; 60/501371 & 60/501790; 60/527957 & 60/528670; 60/563481; 60/564173; 60/589090; 60/601823; 60/605791; EV31369834; 11/259766; 60/622485 & 60/710310; 10/937525/60/736901; 60/732787; 7,495,525; 2,548,311; 2,548,317; 7,545,229; 2,563,174; 7,580,693; 7,612,296; 2,524,751

VOLTAGE CONTROLLED SAW OSCILLATOR SURFACE MOUNT MODEL: VCISO-OC12-1

OPTIMIZED BANDWIDTH

622.08 MHz

PERFORMANCE PLOTS



This product is manufactured under one or more of the following patents: Approved: 5,160,810; 5,122,621; 5,390,349; 5,416,449; 5,650,754; 5,805,431; 6,525,623; 6,850,575; 7,088,189; 7,180,381; 7,196,591; 7,262,670; 7,265,642; 7,292,113; 7,365,612; 7,495,525; 2,548,311; 2,548,317; 7,545,229; 7,580,693; 7,586,381; 7,605,670; 7,636,021; 2,533,623 | Pending: 60/493075; 60/501371 & 60/501790; 60/527957 & 60/528670; 60/563481; 60/564173; 60/589090; 60/601823; 60/605791; EV31369834; 11/259766; 60/622485 & 60/710310; 10/937525/60/736901; 60/732787; 7,495,525; 2,548,311; 2,548,317; 7,545,229; 2,563,174; 7,580,693; 7,612,296; 2,524,751