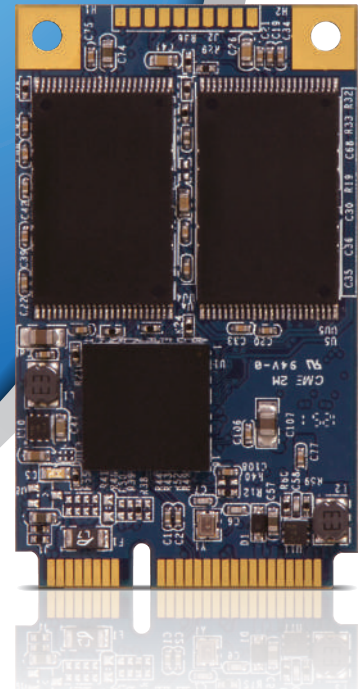


mSATA SSD **MP1**

SATA III 6Gb/s mSATA



SSD | MP1

Team mSATA Solid State Disk (MP1)

As the market trends and consumer habits change, the need for effective system storage systems continues to increase. TEAM Group Inc. released a new mSATA MP1 solid state drive, which complies with JEDEC mSATA dimension specifications and only has a size one eighth of a 2.5 inch SSD. In addition to the original system integration or server applications, it is also most suitable for lightweight Notebooks, Ultrabooks, tablets, and Next Unit of Computing (NUC).

Small Size, Great Efficiency

mSATA MP1 supports SATAIII and has a transfer rate of 6Gb/s. It has all the advantages of SSD (high speed, low power consumption, shock-resistant, high stability and zero noise) and its maximum reading speed can reach up to 530MB per second and maximum writing speed can reach up to 440MB per second. When compared to traditional hard drives, it can reduce the waiting time for system start up, program execution, and windows operation, vastly increasing work efficiency. mSATA MP1 is small in size, so it is suitable for notebooks and systems that demands lightweight and it can also enhance the overall power performance.

Dual Usage as System Startup Disk or Cache Disk

Commercially available computers are improving all the time, some Ultrabook no longer use built-in 2.5" SSD and use built-in small capacity mSATA instead in order to make them more lightweight; some PC/Notebook also has mSATA slots. mSATA MP1 can be used as a system start up disk, or it can also be used with a hard drive (HDD) to be used as a cache disk. Compared to traditional hard drives, it saves approximately two times the boot time, significantly increasing the system's operation time. Small capacity mSATA can also be upgraded to large capacities to be used simultaneously as the system disk and the main storage device.



Boot Time
MP1+HDD
HDD (7200 RPM)

12sec

25sec

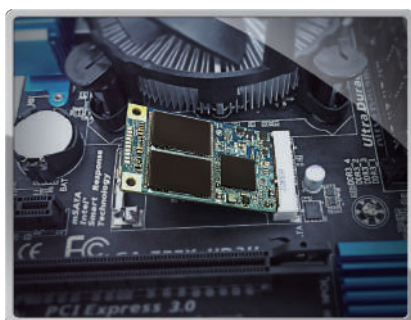
2x faster

*Note: Speed may vary due to host hardware, software and usage.

Supports Intel® Smart Response Technology

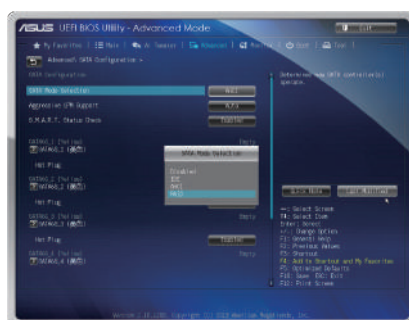
SATA III 6Gb/s mSATA MP1 SSD supports Intel® Smart Response Technology (ISRT); Smart Response Technology (ISRT) is the caching mechanism of the Z68 chipset (Sandy Bridge series processors). Users can set it quickly and easily and make MP1 the cache memory between the hard drive (HDD) and computer and improve the overall work efficiency. ISRT caches the frequently used application programs or games into MP1 by monitoring the user's habits, and MP1 plays the role of cache memory to quickly access frequently used programs, increasing the program open speed and system response.

Multiple Capacity Selections



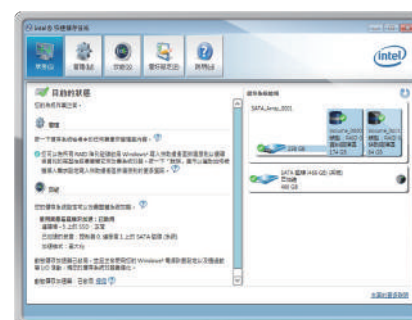
Step 1 >>

Insert mSATA SSD (MP1)



Step 2 >>

Enter BIOS setting & select SATA mode RAID



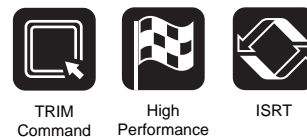
Step 3 >>

Run Intel Rapid Storage Technology

Team MP1 comes in three capacities: 64GB, 128GB and 256GB; users can choose to purchase the basic capacity to use with traditional hard drive drives according to their budget, or choose to use high capacity to replace traditional hard drives.

Main Feature

- Support SATAIII 6Gb/s mSATA
- Support S.M.A.R.T, Trim Command, NCQ
- Support Intel Smart Response Technology (ISRT)
- Build in Error-Correcting Codes (ECC) and Wear Leveling



Specification

Item	Specification
Model	MP1
Interface	SATA III 6Gb/s mSATA
Capacity	64GB, 128GB, 256GB
Performance	ATTO : 64GB* Read/Write: up to 530/440 MB/s** 128GB* Read/Write: up to 530/440 MB/s** 256GB* Read/Write: up to 520/300 MB/s**
	Crystal Disk Mark : 64GB* Read/Write: up to 410/130 MB/s** 128GB* Read/Write: up to 410/130 MB/s** 256GB* Read/Write: up to 490/300 MB/s** 64GB-128GB* 4K Random Read/Write: 35K/22K IOPS Max** 256GB* 4K Random Read/Write: 75K/75K IOPS Max**
Voltage	DC 3.3V ±5%
Dimensions	50.8 (L) x 29.85 (W) x 4 (H)mm
Weight	6.9g
Operating Temperature	0°C ~ 70°C
Shock	500G, 2ms
MTBF	1,000,000 hours
Warranty	3 years

Notes: *1GB=1,000,000,000 Bytes. In OS system, it would be displayed as 1,000,000,000 Bytes / 1024 / 1024 / 1024 = 0.93GB

**Transmission speed will vary according to different hardware / software conditions, therefore the data can only used for basic reference.

Ordering Information

Team P/N	Capacity	Description
TM38P1064GMC101	64GB	TEAM MO300A mSATA3 MP1 64GB RETAIL
TM38P1128GMC101	128GB	TEAM MO300A mSATA3 MP1 128GB RETAIL
TM38P1256GMC101	256GB	TEAM MO300A mSATA3 MP1 256GB RETAIL

Above technical information is based on industry standard data and tested to be reliable. However, Team makes no warranty, either expressed or implied, as to its accuracy and assumes no liability in connection with the use of this product.

Team reserves the right to make changes in specifications at any time without prior notice.



Address: 3F, No.166, Jian 1st Rd., Zhonghe Dist.,
New Taipei City 23511, Taiwan (R.O.C.)
Tel: +886-2-82265000 Fax: +886-2-82265808
mail: sales@teamgroup.com.tw / rma@teamgroup.com.tw