



TEAM CROSS Quick Start

Hardware requirements	3
Operating System	3
Install TEAM CROSS app on the smartphone	4
USB debugging mode setting	5
Install TEAM CROSS app on PC	6
TEAM CROSS toolbar functionalities	10
TEAM CROSS Wi-Fi wireless connection	12
TEAM CROSS advanced functionalities	15
Two-way control	15
Wi-Fi wireless connection	15
TEAM CROSS Wi-Fi wireless connection	15
Two-way file transfer	16
File sharing	17
Connection quality setting	21
FAQ	22

System Requirement

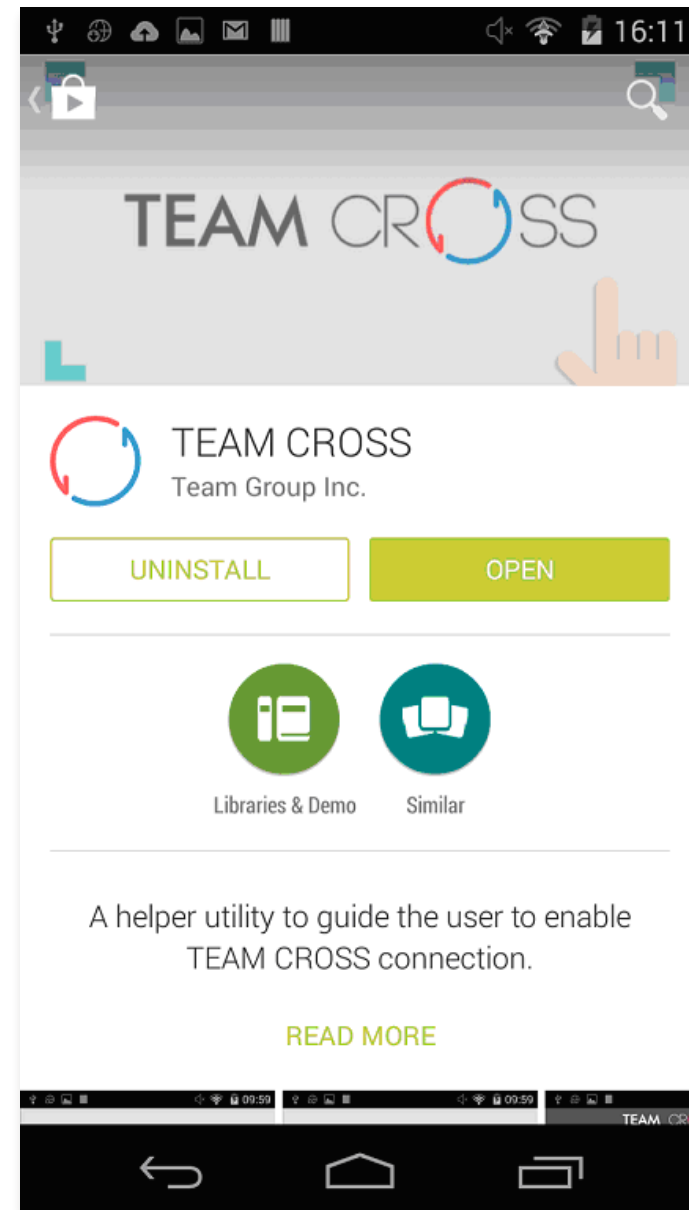
- A desktop computer or a notebook with USB port
 - ✓ RAM: 1GB or higher
 - ✓ Video card that supports DirectX
- Android smartphone
 - ✓ Micro USB port
 - ✓ Wi-Fi internet connection
 - ✓ RAM 512 MB or higher
 - ✓ OTG function supported
- Team M152
 - ✓ Please do not format or delete preloaded files on M152 when using TEAM CROSS

System Requirement

- PC – Windows 7/8/8.1/10
- Smartphone – Android 4.2 or higher

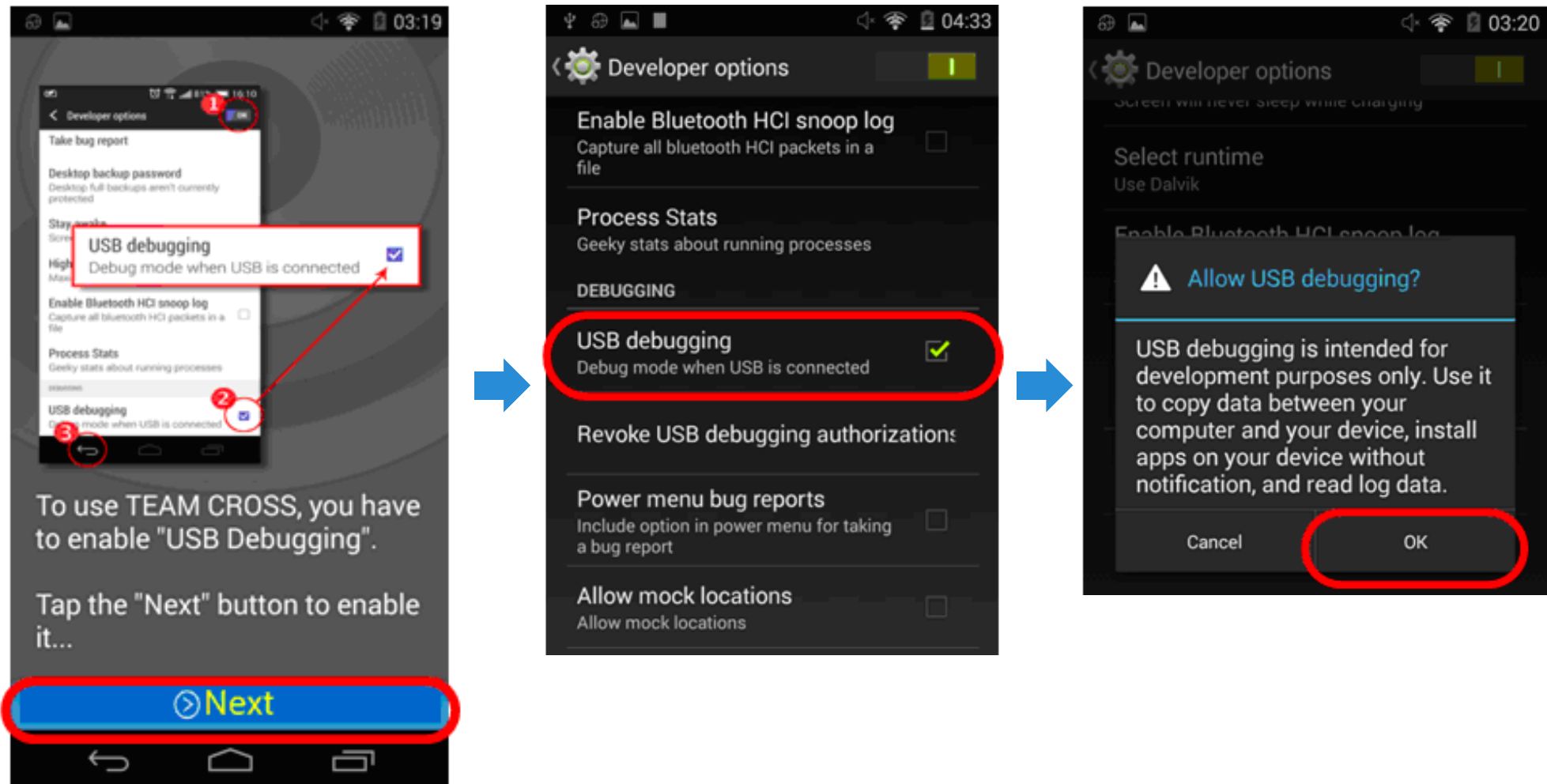
Step 1: Install TEAM CROSS App in your Smartphone

When you use TEAM CROSS for the first time, please install the “TEAM CROSS” App from the Google Play Store, this App will help you configure your Smartphone in order to successfully connect your computer and your Smartphone.



Open the “TEAM CROSS” App and follow the steps to enable “USB debugging”.

(USB debugging mode setting is somewhat different for each brand of smartphone. Please refer to the original manufacturer for instructions.)

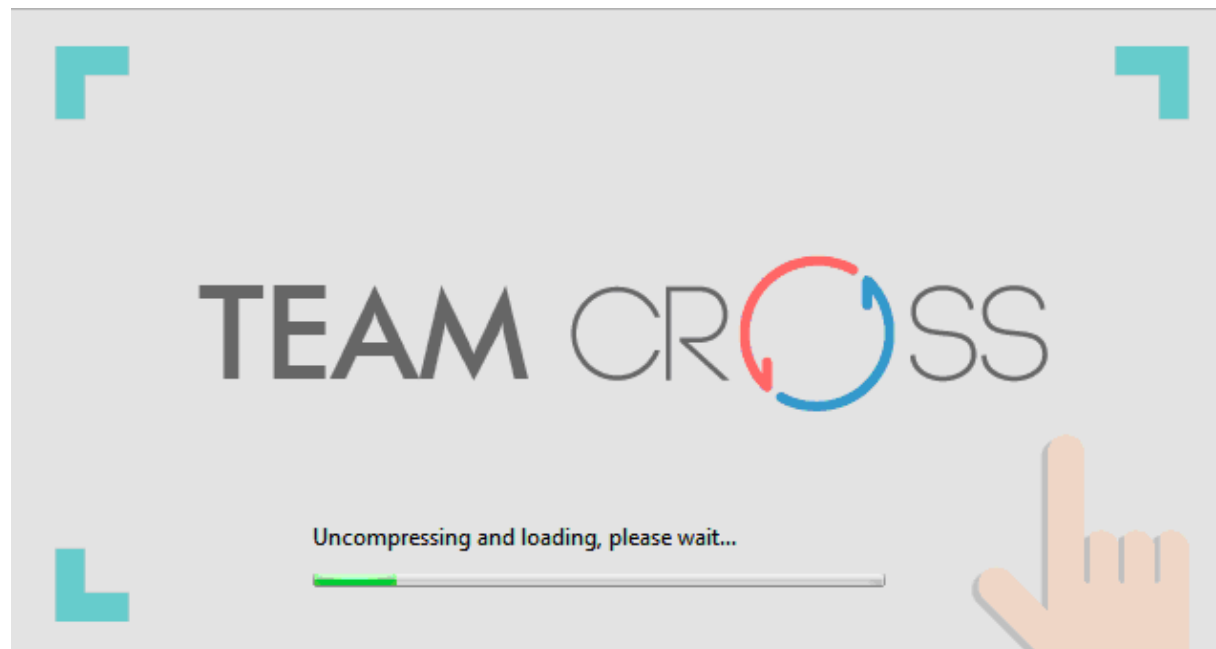


Step 2 : Install TEAM CROSS application in your computer

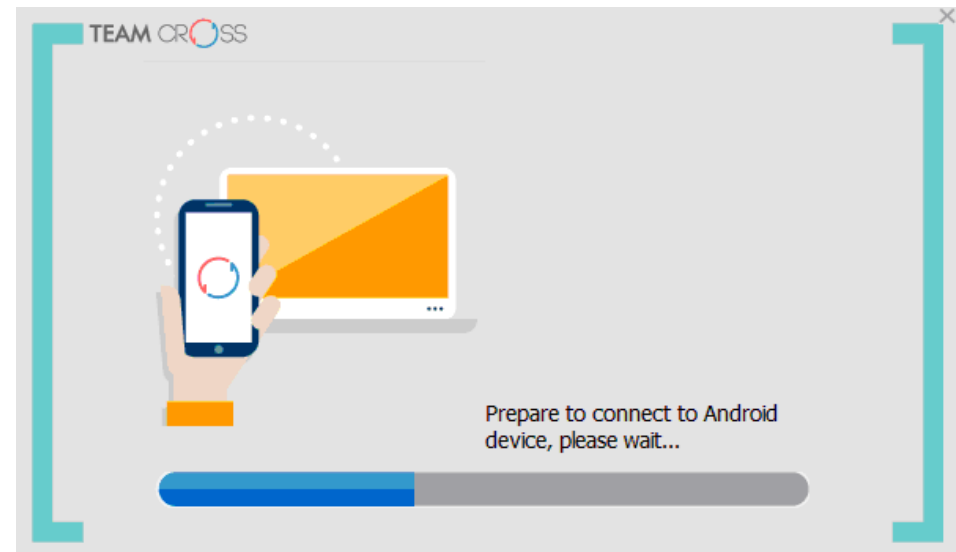
Warning! Some antivirus software might interfere in the process of the program installation, please temporarily pause these antivirus software or add the program into the trusted list in order to complete the installation.

To use TEAM CROSS, you need to install the application on your computer.

1. Connect your smartphone to your computer via USB cable
2. Plug in the TEAM CROSS OTG USB flash drive in your computer, and double-click the “TCInstaller.exe” in the USB flash drive.
3. TEAM CROSS application will automatically install the program and the smartphone’s driver to the computer.
4. It may take minutes, please wait.




5. After installation, the TEAM CROSS will connect to your smartphone.



6. Once connection is successful, your smartphone's screen will be displayed on your computer, and you are now ready to use the keyboard and mouse of the computer to operate your smartphone.



Notes:

If this is your first time using Team Cross on your computer, you might not be able to use your mouse to operate the smartphone; if not, please click the “Touch Diagnostic”  button in the toolbar to fix it. (The following reminding window will popup automatically after successfully making the connection).



Please try to use the mouse of your computer to control connected Android device.

In case you can not control it, please click the "Touch diagnostic" button in the toolbar to fix it. (Please refer to the diagram below)

☐ **Do not display next time**









TEAM CROSS Toolbar

After the smartphone's screen is displayed on your computer, you can control the smartphone by mouse-clicking toolbar on the top of the window.



The toolbar function is described as below:

	Back
	Power
	Home
	Switch app
	Top Most Off / Top Most On
	Turn on Wireless Connection

	Power Saving On / Power Saving Off
	Touch diagnostic
	Rotate Left / Rotate Right
	Volume Up / Volume Down
	Page Left / Page Right
	Switch Smartphone Keyboard / PC Keyboard

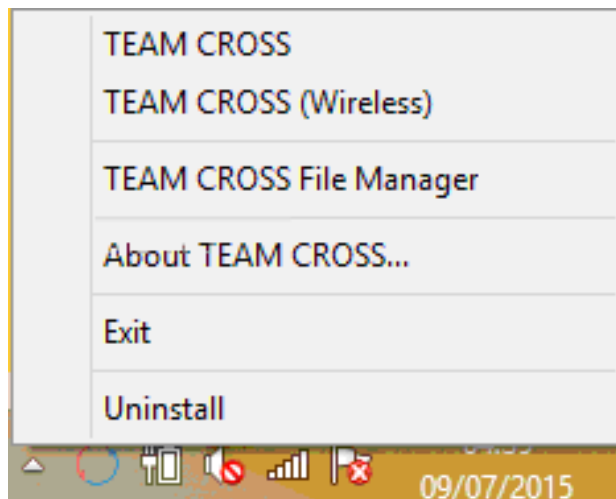
TEAM CROSS Wi-Fi connection

After you have successfully installed TEAM CROSS application software on your computer and connected to your smartphone, you are able to connect to your smartphone via Wi-Fi. It is necessary connect both your smartphone and computer to the same Wi-Fi.

There are two ways to connect your computer and smartphone via Wi-Fi.

TEAM CROSS Wi-Fi connection from your computer :


1. Right click the [TEAM CROSS] icon from the system tray then choose the [TEAM CROSS (Wireless)] .

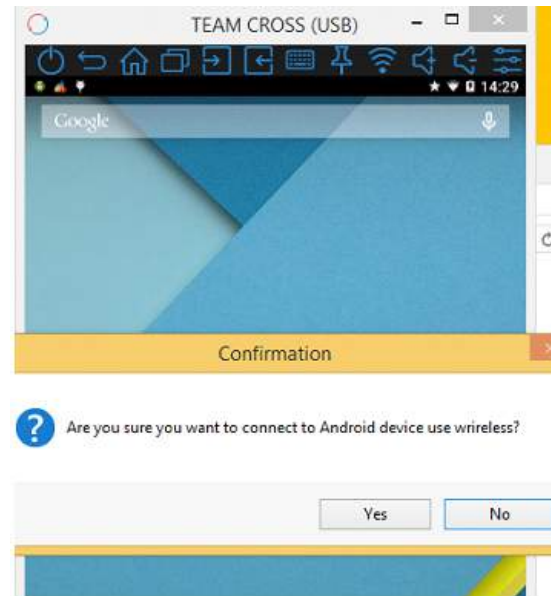


The above procedure will open a detected smartphone list window (as following figure), you can select one and click it to start the connection via Wi-Fi.

Notes: if you smartphone has been rebooted, be sure to start TEAM CROSS connection via USB cable once before you starting to use wireless connection.



2. If the Wi-Fi connection is available between your computer and smartphone, the Wi-Fi button symbol will turn to  in top of toolbar, click this button , it will switch the connection from USB cable to Wi-Fi.

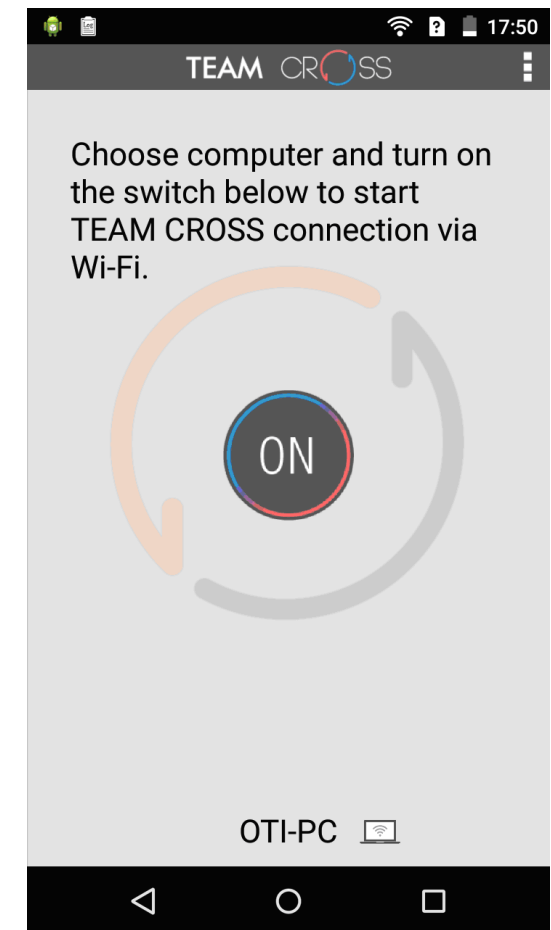
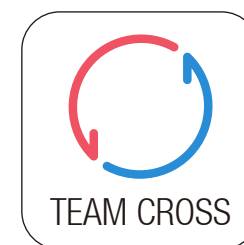


TEAM CROSS Wi-Fi connection from your smartphone:

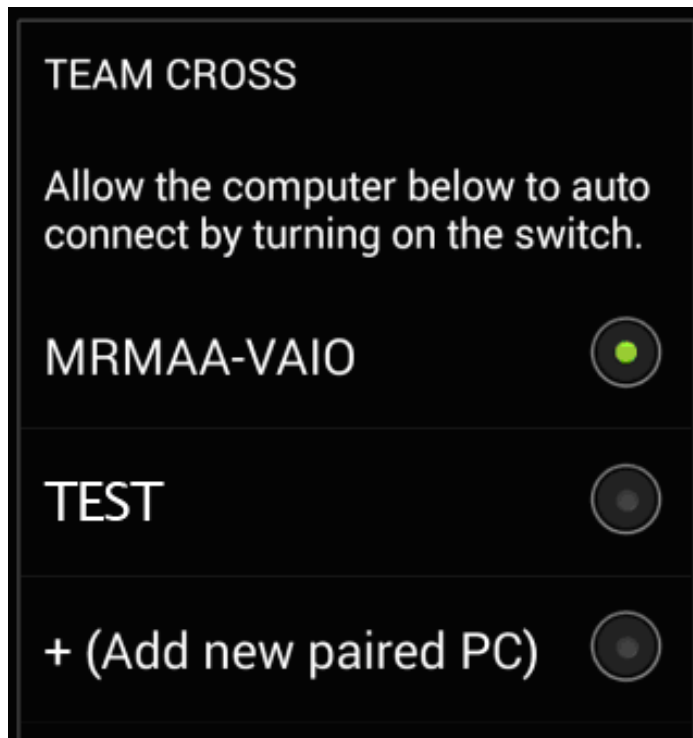
1. Start the [TEAM CROSS] app on your smartphone in order to start the Wi-Fi connection with the paired computer from your smartphone.

If the smartphone has been paired with multiple computers, you can tap the PC icon at the bottom of the main screen to switch the computer you want to connect with.

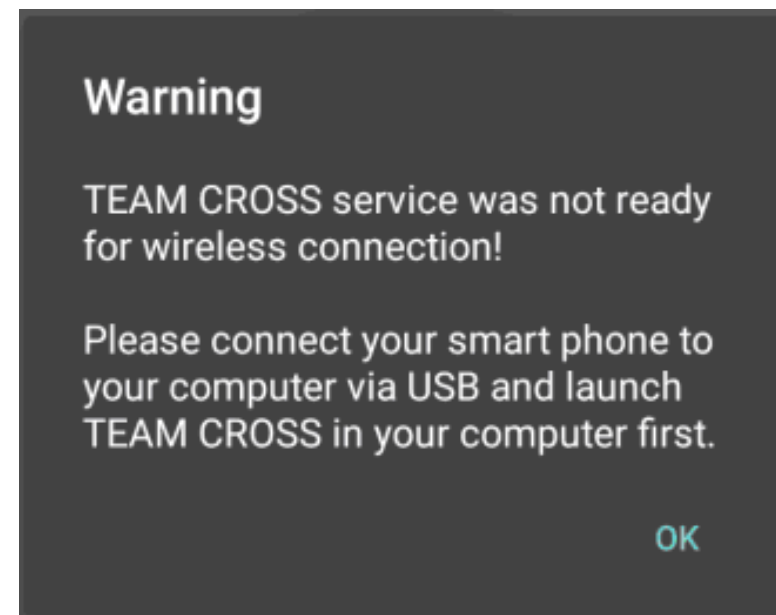
You can switch the [ON] button to initiate TEAM CROSS connection with the selected computer via Wi-Fi, once the connection has been established, you can stop the Wi-Fi connection by switching the [OFF] button.



Change the paired computer you want to connect in following paired computer list:



2. If your smartphone has been rebooted, be sure to start TEAM CROSS connection service via USB cable before you can use the switch to initiate wireless connection with paired computer, otherwise, you will get the warning window below.



TEAM CROSS Functions

1. Bidirectional Control: After the connection has been made, your smartphone's screen will be displayed on the computer, you can view and control the smartphone by using your computer's mouse or directly touch your computer screen if your computer is equipped with a touch screen panel, besides you can also share files between your computer and smartphone.

Of course, you can also control your smartphone directly using the touch panel of smartphone, the screen will dynamically mirror to your computer.

The image of your smartphone's screen on your computer will automatically rotate when your smartphone's orientation change.

2. Start wireless connection via switch: The switch in the main panel of TEAM CROSS App installed in your smartphone helps you to start/stop the Wi-Fi connection. When you turn on the switch, the computer you've selected in the list at the bottom of the panel will automatically be paired with your smartphone. Once you turn the switch off, the connection will stop.

It is necessary to connect both your smartphone and your computer(s) to the same Wi-Fi connection and have them connected via USB cable once.

3. Two-way clipboard: You can input text on your smartphone with your computer's keyboard.

The TEAM CROSS set your smartphone's on screen keyboard as default for the text input. To your use computer's keyboard instead, simply type the text directly from the TEAM CROSS window in your computer or click the keyboard switch button in the toolbar at the top of window.

- Copy and paste: With the clipboard sharing feature, you can edit, copy and paste the clipboard contents (such as Skype, Line, SMS) between the computer and smartphone.

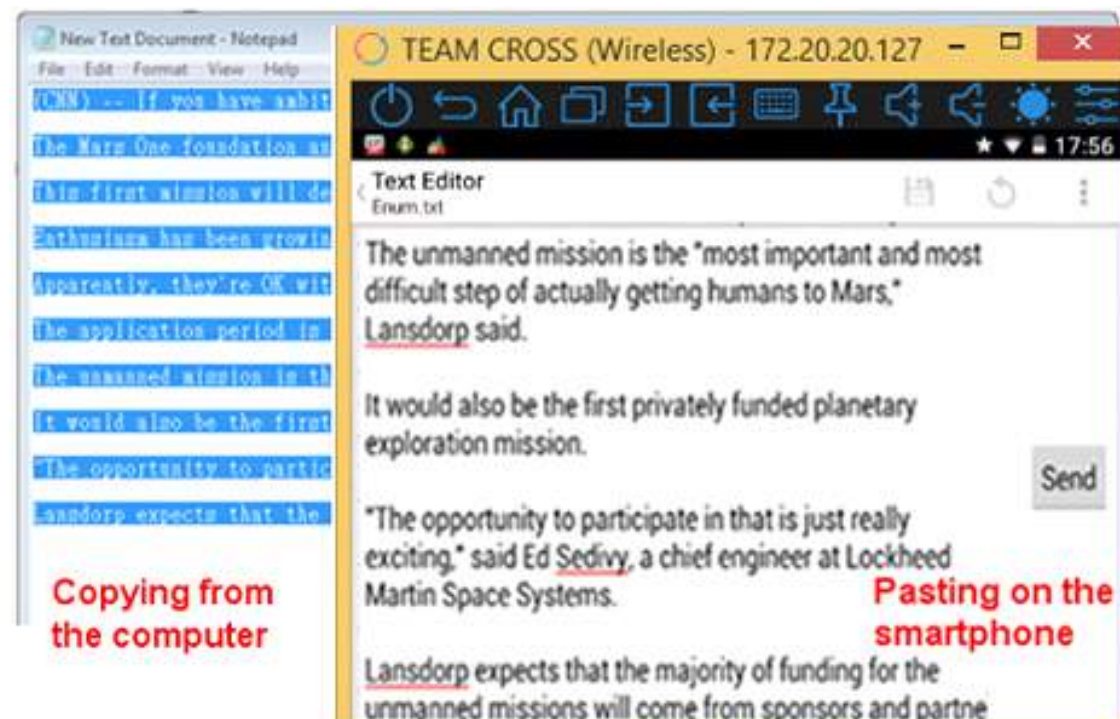
For example, to copy text on a Notepad file from your computer to the Line App on your smartphone.

I. Open the “source” file then select and right-click on the text that you want to copy, choose Copy from popup content menu.

II. Move the cursor to the smartphone’s screen on your computer, and open the “destination” editor file.

III. Move the cursor to the location that you want to place the text, tap and hold then select Paste.

You can also do the same way as above to copy text from the smartphone to a computer.



- You may also use your computer's keyboard hotkeys to control your smartphone's editor (this depends on the capability of the smartphone's editor and may not work):

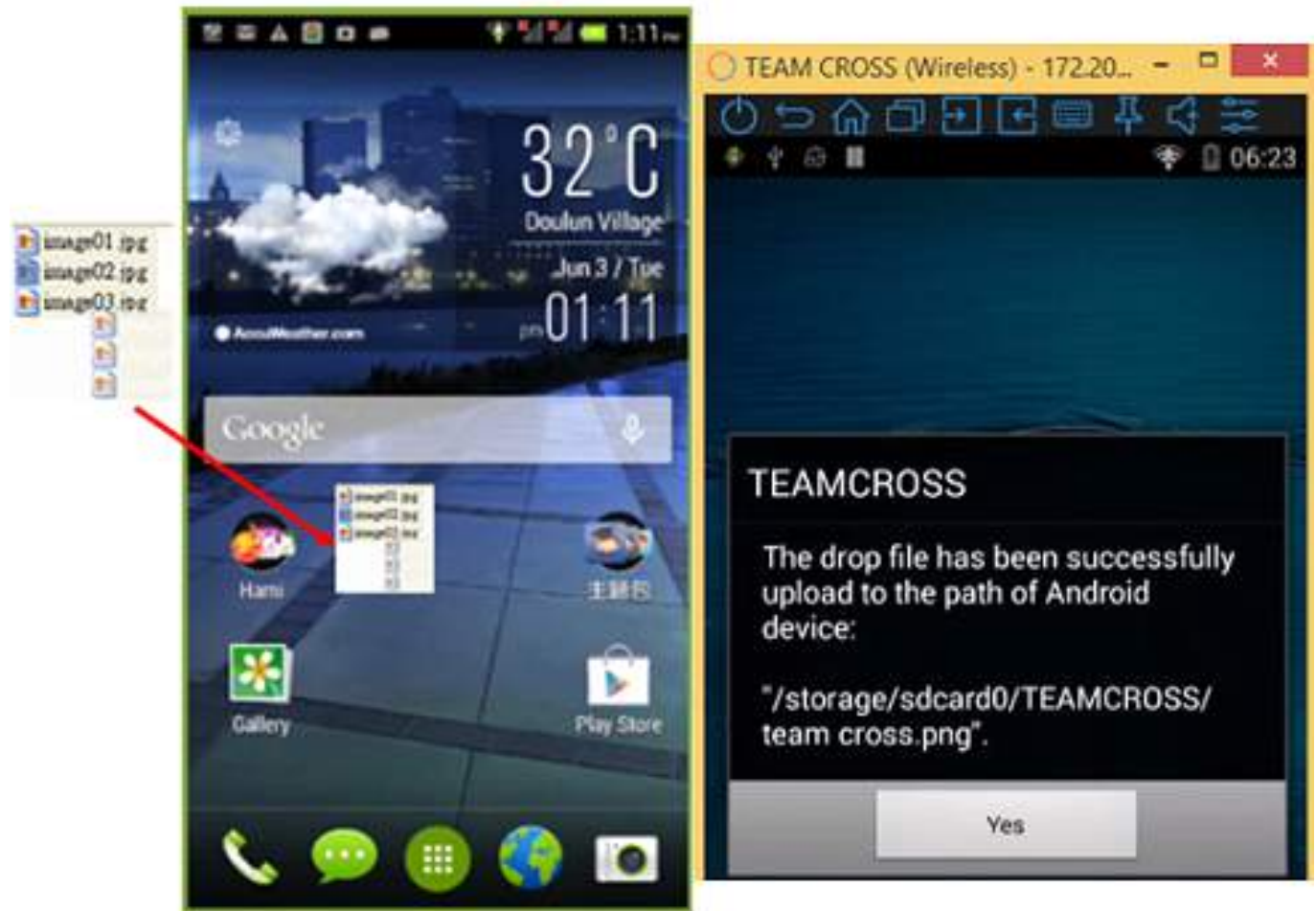
[Ctrl+A] : Select all+

[Ctrl+C] : Copy

[Ctrl+V] : Paste


4. Two-way file transfer: Simply drag and drop the file by mouse between your computer and smartphone to transfer files.

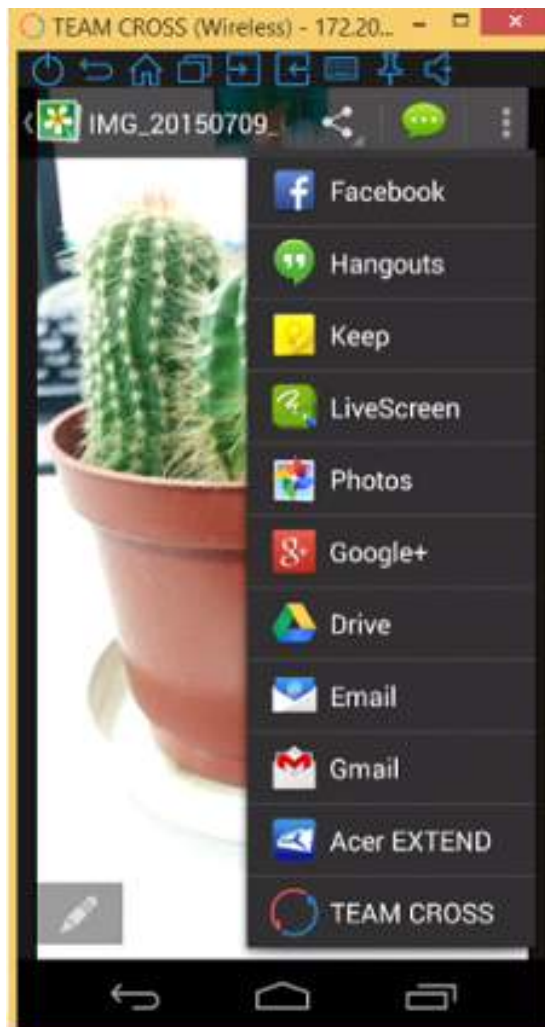
- Drop your computer's file to your smartphone:
Simply drag and drop the computer files to the TEAM CROSS windows, then the drop files have been successfully copied to the path of your smartphone as following



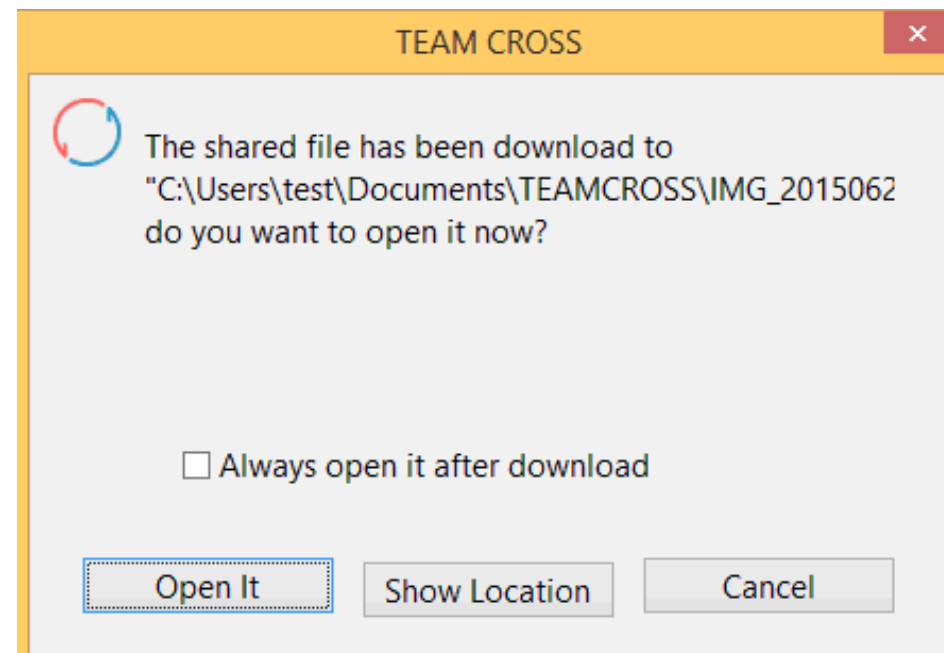
5. File sharing: It is smart way to open a photo on your smartphone that could be shared to the computer.


✓ If you want to transfer files like photos or videos from your smartphone to your computer.

First, you should open the file or photo, and click  icon to share via [TEAM CROSS].



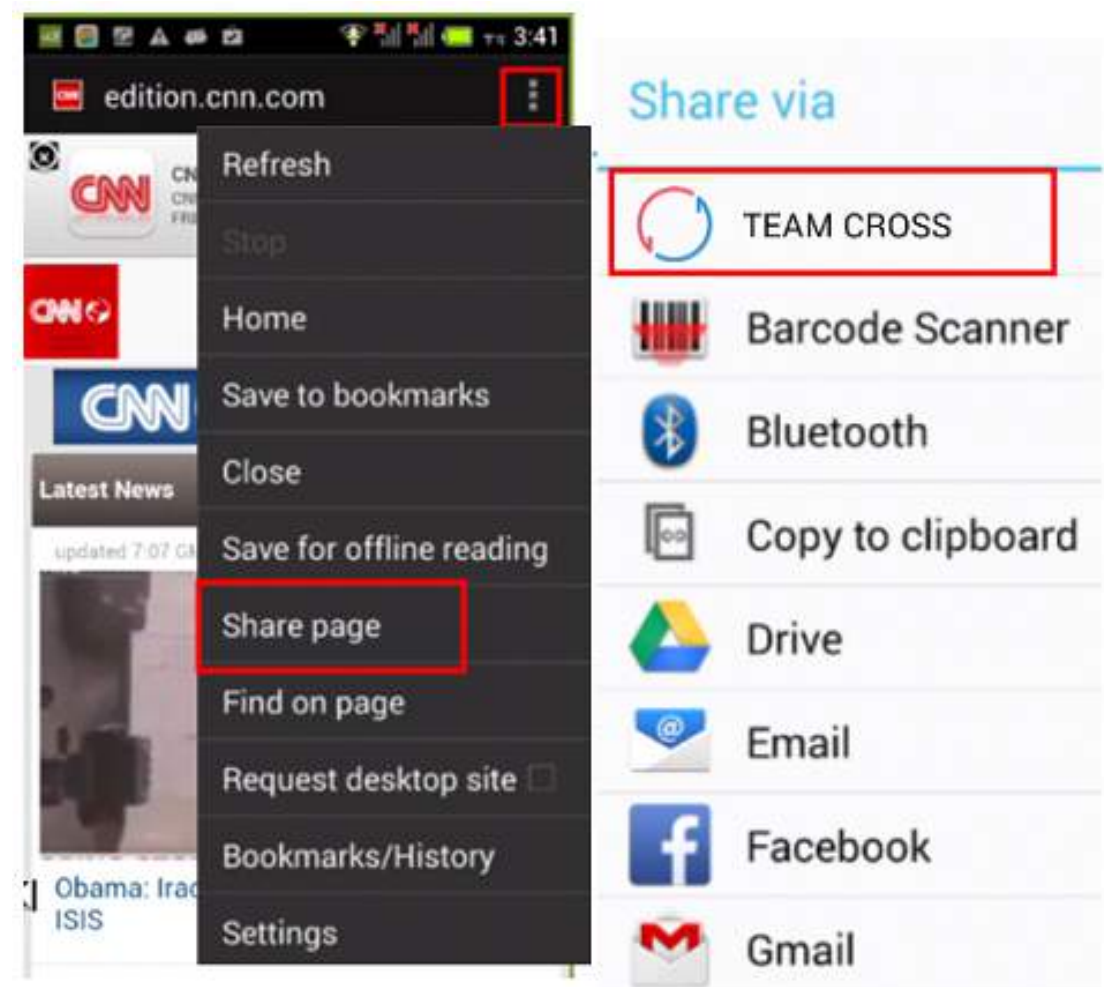
The shared file will be downloaded to the specified path of your computer and it will pop up a window like following figure.



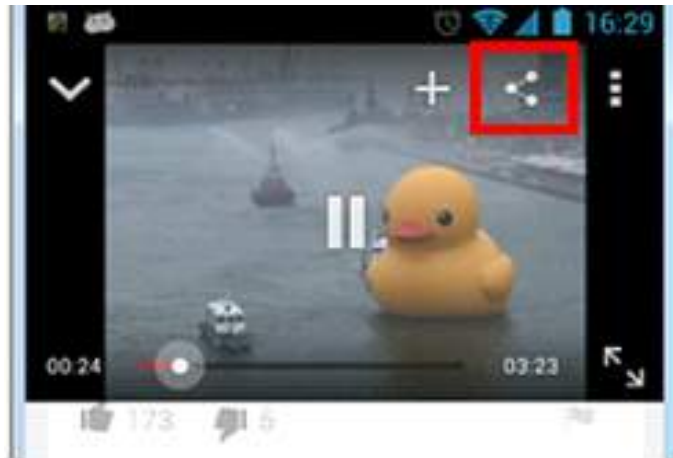
- ✓ After the photo taking by your smartphone, you choose  icon and the shared file will be download to the specified path of the computer as following figure.



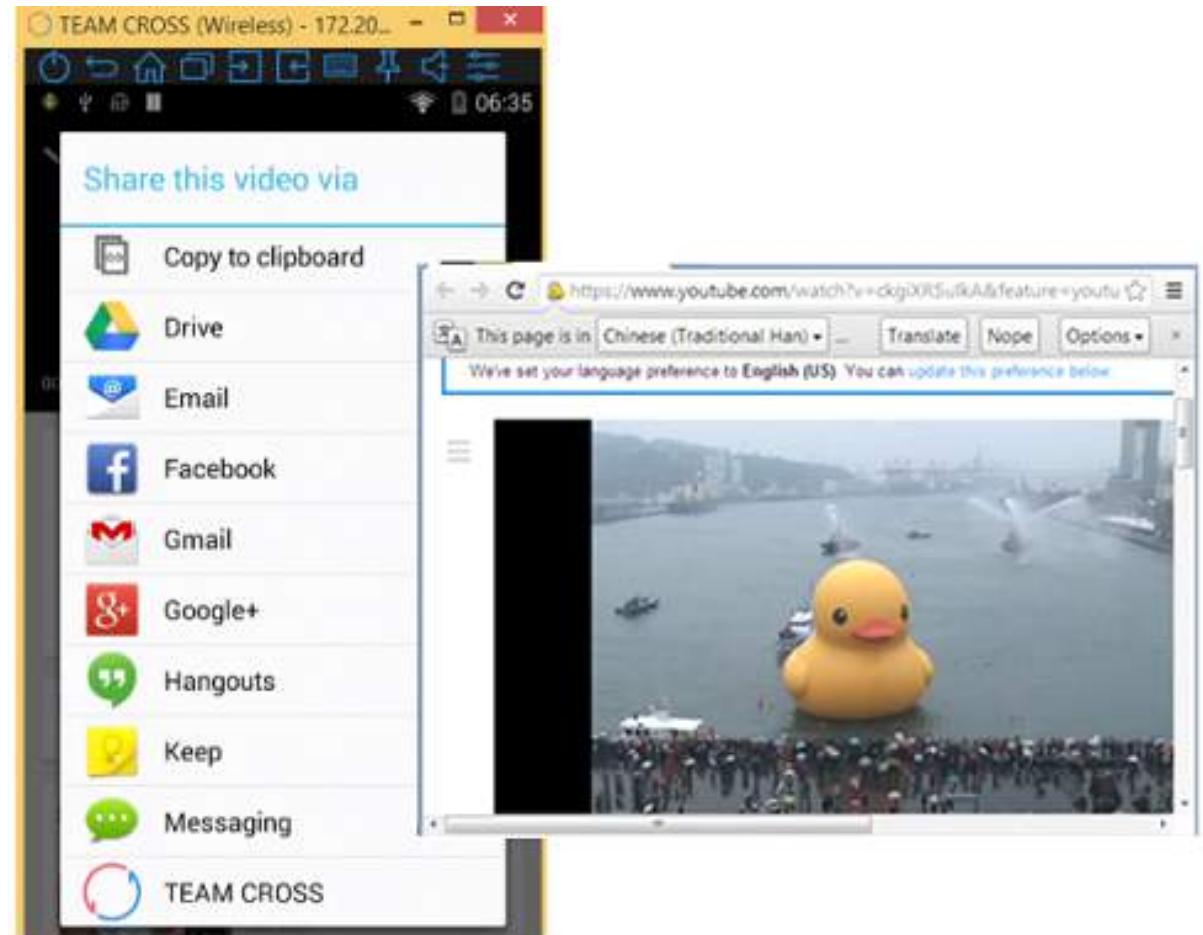
- ✓ If you want to send the webpage or YouTube link from your smartphone to your computer. First, sharing via [TEAM CROSS] on the chosen webpage, the webpage will be opened on your computer.



The YouTube page on the smartphone transferred and played on the computer. First, click share via [TEAM CROSS] on the chosen YouTube page.

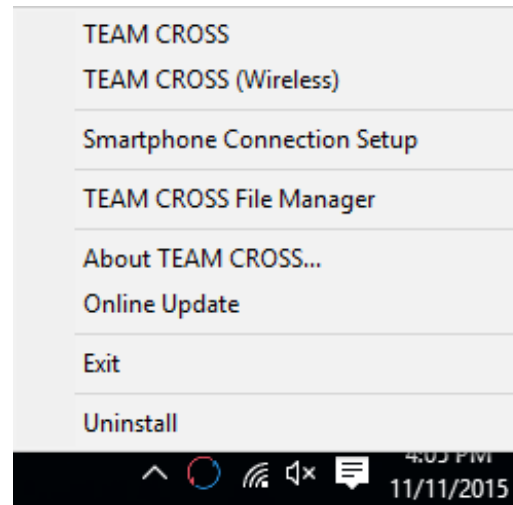


The YouTube page will be opened quickly on your computer as following.

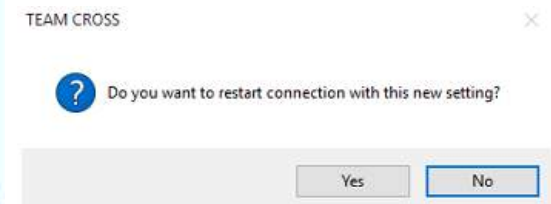
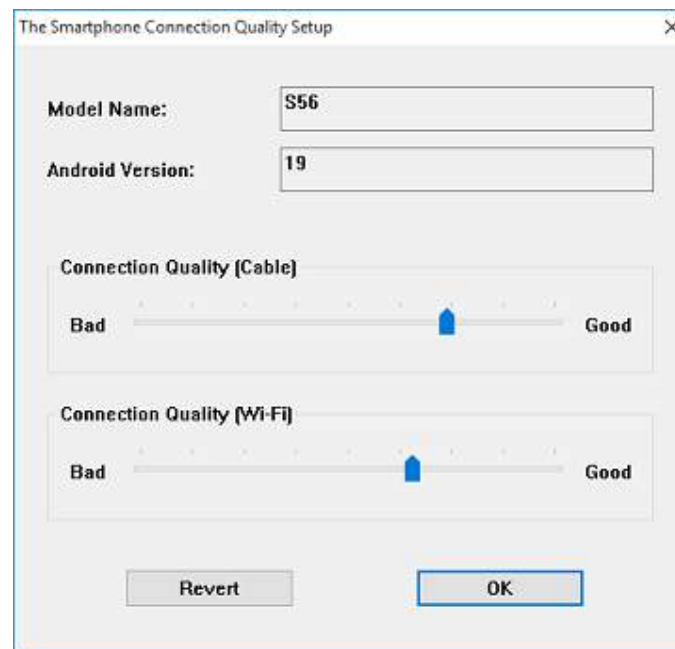


6. Connection quality setting: When playing a video via your smartphone, you can setup the connection quality of your smartphone. You can adjust the connection quality to be good, then the dynamic video will be displayed well.

Right click the [TEAM CROSS] icon from the system tray of your computer then choose



You can drag the blue stick to adjust the connection quality you want, then press [OK] to configure your setting. When the connection quality is better, the dynamic video displayed well.

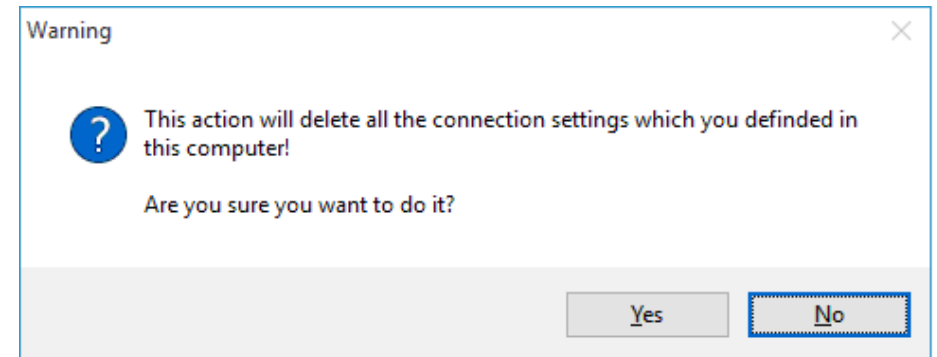


Notes:

If your WiFi environment is not stable, the dynamic video will not be displayed smooth when you configure the connection quality(WiFi) be good.

Please lower the connection quality(WiFi) when the WiFi is unstable, and the displayed-video will be changed.

To Click [Revert] icon will delete all the connection settings you ever defined in this computer.



FAQ

Q: Is it possible to use TEAM CROSS on iPhone or Mac?

A: Currently it only supports Windows and Android. For detail specification please refer to Hardware requirements/Operating system on page TW-3.



Q: Is M152 not able to be used after formatting?

A: Please do not format M152, which will cause M152 loss of function. Please contact customer service of Team Group.

Q: Smartphone is not found when TEAM CROSS is opened by PC?

A: Make sure the smartphone is turned on and TEAM CROSS app is opened. If it is the first time connecting, please use wired mode to complete the connection. The Wi-Fi connection is immediately ready for setting after completion. However, PC and smartphone must be in the same Wi-Fi network in order to connect.

Q: Unable to use the two-way clipboard?

A:  or  icon must be shown on the toolbar of Android Shadow when smartphone and computer are successfully connected in order to use the clipboard sharing functionality.

Q: There's no sound coming out from the computer?

A: Sound playing issue involves the permission of Android open source platform. Usually the phone manufacturers have to give open permission in order to develop this functionality. M152 itself is through the functionality of the app to support video output, and therefore the app functionality specification does not support sound output.

Q: My LG G3 cannot connect normally?

A: LG's new model needs to install LG USB Driver on the computer first, then install the Team Cross app. Please also remember to change the USB connection mode to MTP mode in order to establish the connection. Please go to LG's official website and click Phone software update which is on the right side of the Mobile device > click Smartphone at Search for mobile device > select the product model > click Software update & firmware to download > at Windows USB driver.

Revision History

Revision	Date	Description
1.0	2015.11.04	Official Release
1.1	2016.04.29	Official Release



Team Group Inc.
www.teamgroupinc.com
3F, NO.166, Jian Yi Rd., Zhonghe Dist., New Taipei City 23511, Taiwan, R.O.C.
TEL: +886-2-8226-5000 | FAX: +886-2-8226-5808

