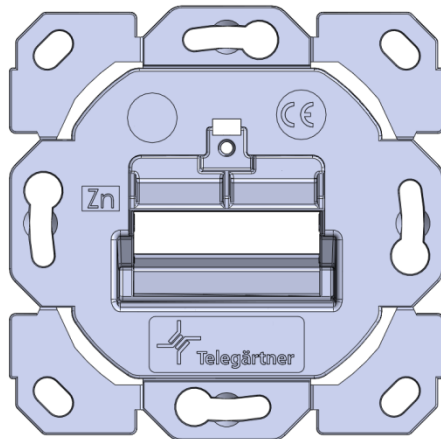
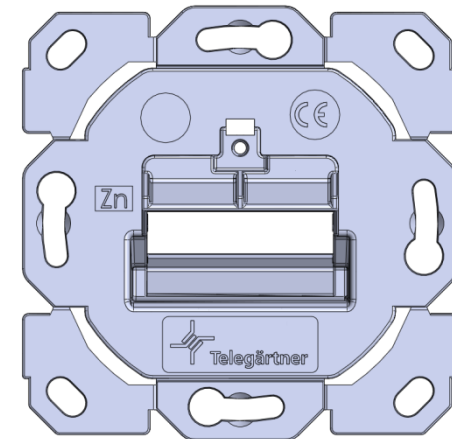


Applications for AMJ-S Module:
cable duct, underfloor, flush mounting,
surface mounting, 19" frontplate, panel for surface
mounting, module carrier, mounting rail outlet

design capable module carrier w/o modules



Replaced by →



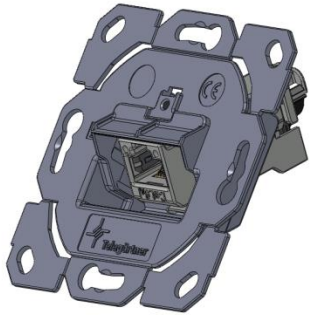
H02010A0085 (B10014A0033):

design capable single/double gang
module carrier AMJ-S UP/0 flex without
AMJ-S Modules

H02010B0085 (B10014B0033):

design capable single/double gang
module carrier AMJ-S UP/0 flex
without AMJ-S Modules; suitable
with switching programs from
several manufacturers

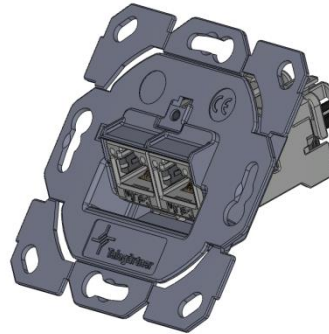
design capable module carrier with AMJ-S Modules



J00020A0514: (T658A)

J00020A0515: (T568B)

design capable module carrier AMJ-S single gang UP/0 flex with 1 AMJ-S Modul Cat.6A



J00020A0510: (T658A)

J00020A0511: (T568B)

design capable module carrier AMJ-S single gang UP/0 flex with 2 AMJ-S Modules Cat.6A

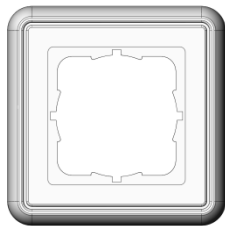


J00020A0512: (T658A), alpinweiß

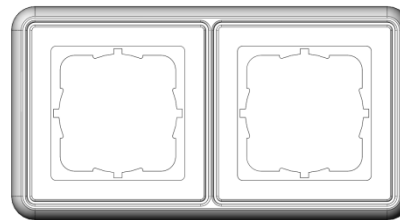
J00020A0513: (T568B), alpinweiß

design capable module carrier AMJ-S triple gang UP/0 flex with 3 AMJ-S Modules Cat.6A

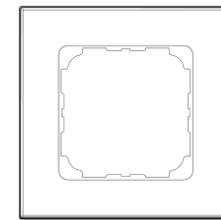
Cover frames



B00004A0021: 80x80 cover frame, single, alpine white
B00004A0019: pearl white (RAL 1013)

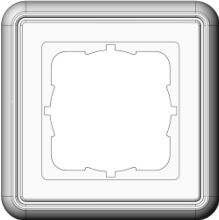
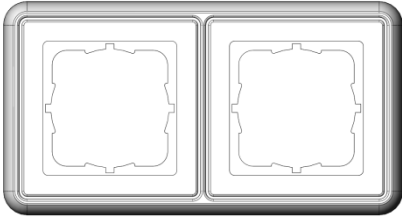
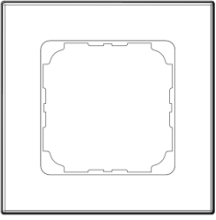

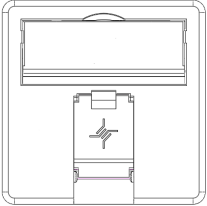

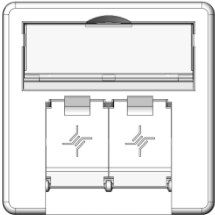



B00005A0009: 80x80 cover frame. double, alpine white
B00005A0007: pearl white (RAL 1013)

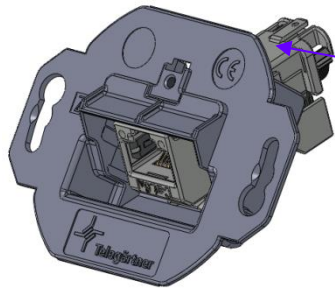


B00004A0024: Cover frame 81x81 alpine white

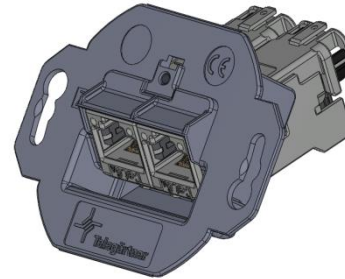
Compatibility

			
 <p>→ using F00020A0123: alpine white F00020A0124: pearl white</p> 	compatible	compatible	compatible
 <p>→ using F00020A0113: alpine white F00020A0114: pearl white</p> 	compatible	compatible	compatible
	not compatible	not compatible	compatible

For flush mounting mounting boxes : Hager-Tehalit; OBO-Bettermann

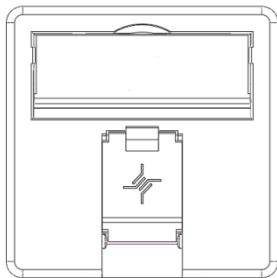


Remove brackets
from carrier



J00020A0514: (T658A)
J00020A0515: (T568B)

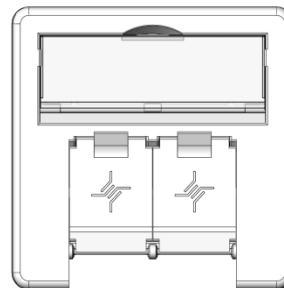
Set



F00020A0123: alpine white
F00020A0124: pearl white

J00020A0510: (T658A)
J00020A0511: (T568B)

Set



F00020A0113: alpine white
F00020A0114: pearl white



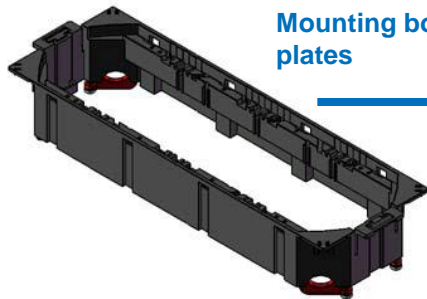
J00020A0512: (T658A)
J00020A0513: (T568B)

→ both alpine white

Set

Underfloor systems: Hager Tehalit (Electraplan Solutions)

GBV3T



Mounting boxes need cover plates

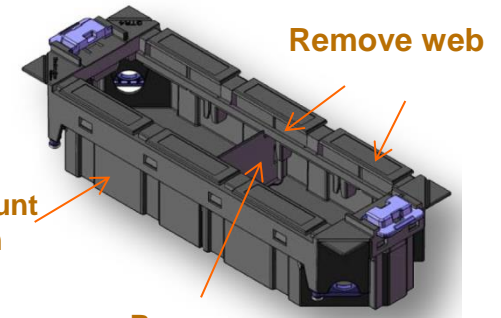


GBVTN3



GBV2T with GBVTN2 for 2 accessories

GTR4



Remove web

Dismount bottom

Remove divider

GTR3 for 2 accessories

OBO BETTERMANN | ACKERMANN

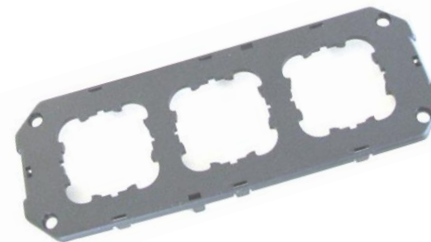
GB3BL



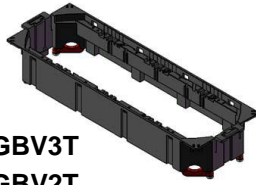
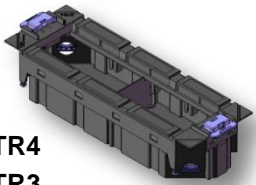

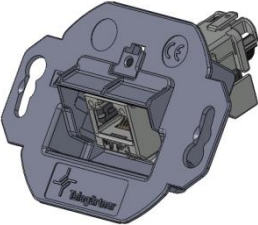
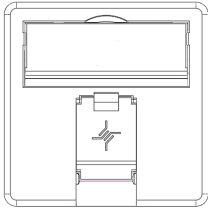
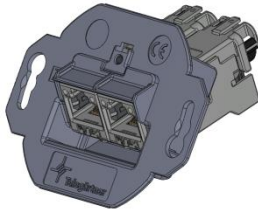
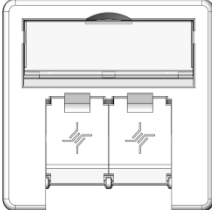

Mounting boxes need cover plates



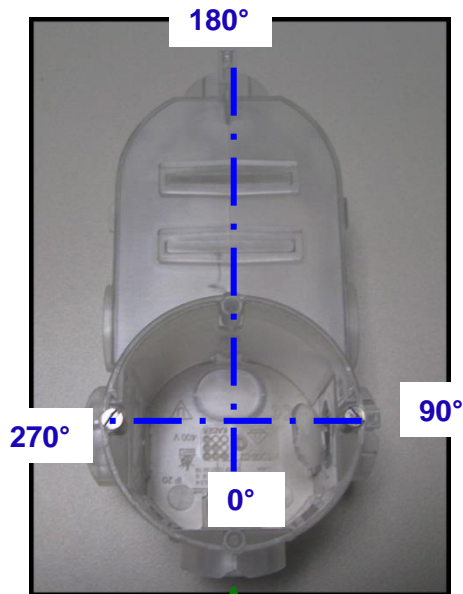
GB3P2



Compatibility

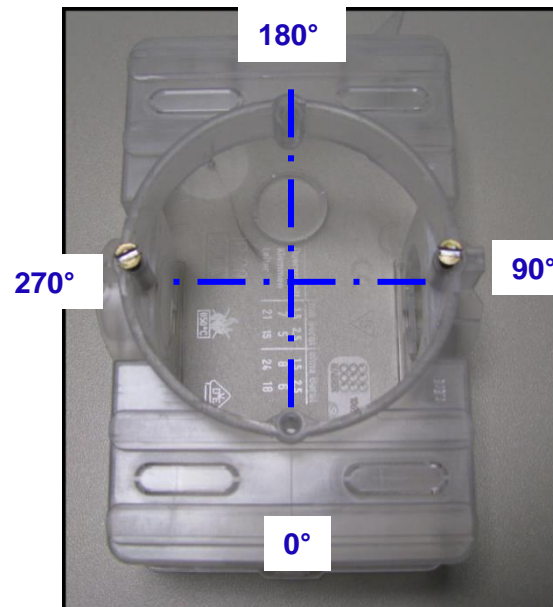
		electraplan	electraplan	OBO
		 <p>GBV3T GBV2T</p>	 <p>GTR4 GTR3</p>	 <p>GB3BL</p>
 <p>→ using F00020A0123: alpine white F00020A0124: pearl white</p>		compatible	compatible	not compatible
 <p>→ using F00020A0113: alpine white F00020A0114: pearl white</p>		compatible	compatible	not compatible
		compatible	compatible	not compatible

Flush mounting: KAISER – Boxes and junction boxes

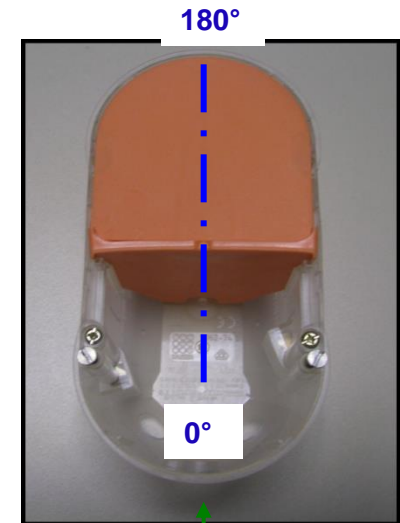


stirnseitig

Electronics box
for flush mounting
P/N: 1068-02






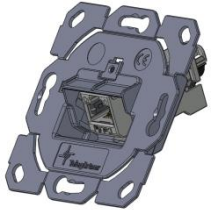
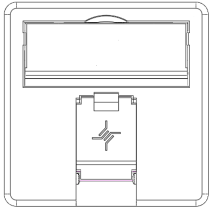
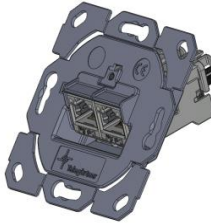
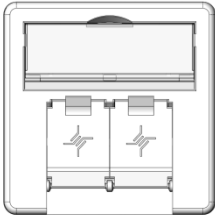

One-gang junction box
with side cavities for connections
P/N: 1069-02



front-end

Electronics box
for cavity wall
P/N: 1062-74

Compatibility

		 P/N 1068-02	 P/N 1069-02	 P/N 1062-74
 <p>→ using F00020A0123: alpine white F00020A0124: pearl white</p>		<p>compatible at 180°</p> <p>not compatible at 0°; 90°; 270°</p>	<p>compatible at 0°; 180°</p> <p>not compatible at 90°; 270°</p>	<p>compatible at 180°</p> <p>not compatible at 0°; 90°; 270°</p>
 <p>→ using F00020A0113: alpine white F00020A0114: pearl white</p>		<p>compatible at 180°</p> <p>not compatible at 0°; 90°; 270°</p>	<p>compatible at 0°; 180°</p> <p>not compatible at 90°; 270°</p>	<p>compatible at 180°</p> <p>not compatible at 0°; 90°; 270°</p>
		<p>compatible at 180°</p> <p>not compatible at 0°; 90°; 270°</p>	<p>not compatible</p>	<p>compatible at 180°</p> <p>not compatible at 0°; 90°; 270°</p>

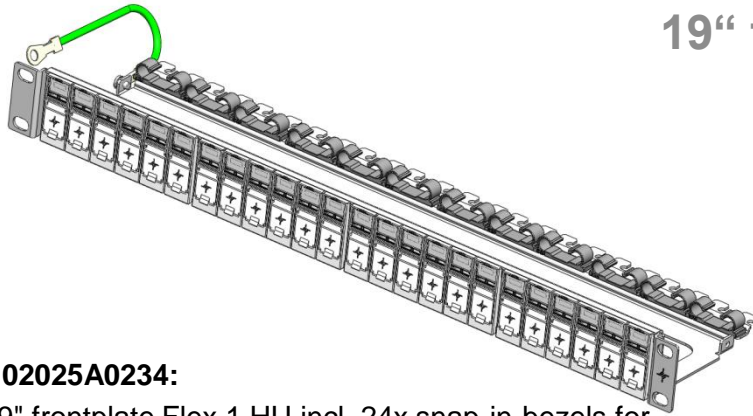
Faceplate AP

H02000A0096:

Faceplate 80x80, triple gang AP incl.
module carrier, label field and shutter,
w/o modules

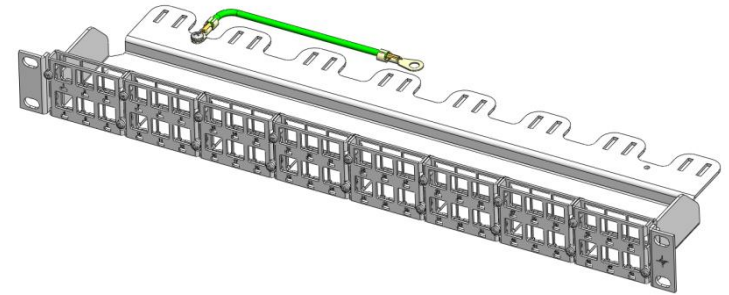


19" frontplates



H02025A0234:

19" frontplate Flex 1 HU incl. 24x snap-in-bezels for 24 AMJ-S, incl. grounding kit 0,3 m

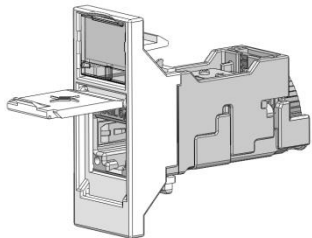


H02025A0236:

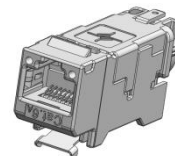
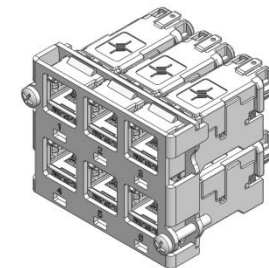
19" frontplate 1 HU for 48 AMJ-S Module, incl. cable strain relief and grounding kit, w/o modules



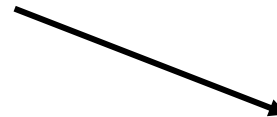
Bezel



Module carrier



AMJ-S Module



Panel for surface mounting

H02025A0260:

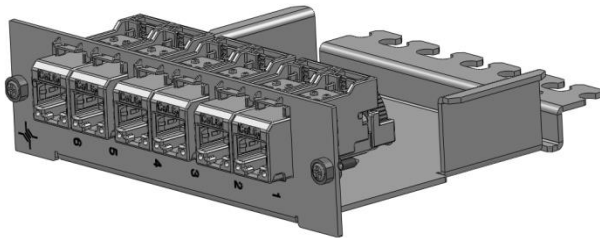
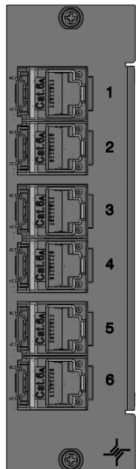
MPD24, 24 Ports, incl. brush strip, pure white



Front plate 3 HU / 7 PU

J02021A0037:

Frontplate 3 HU / 7 PU
incl. 6 AMJ-S Modules Cat.6A T568A



Mounting rail outlet

J00023A0205:

Mounting rail outlet TS45 AMJ-S for mounting rail TH35
incl. AMJ-S Module Cat.6A T568A

J00023A0206:

Mounting rail outlet TS45 AMJ-S for mounting rail TH35
incl. AMJ-S Module Cat.6A T568B

H02000A0086:

Mounting rail outlet TS45 AMJ-S for mounting rail TH35
w/o AMJ-S Module

