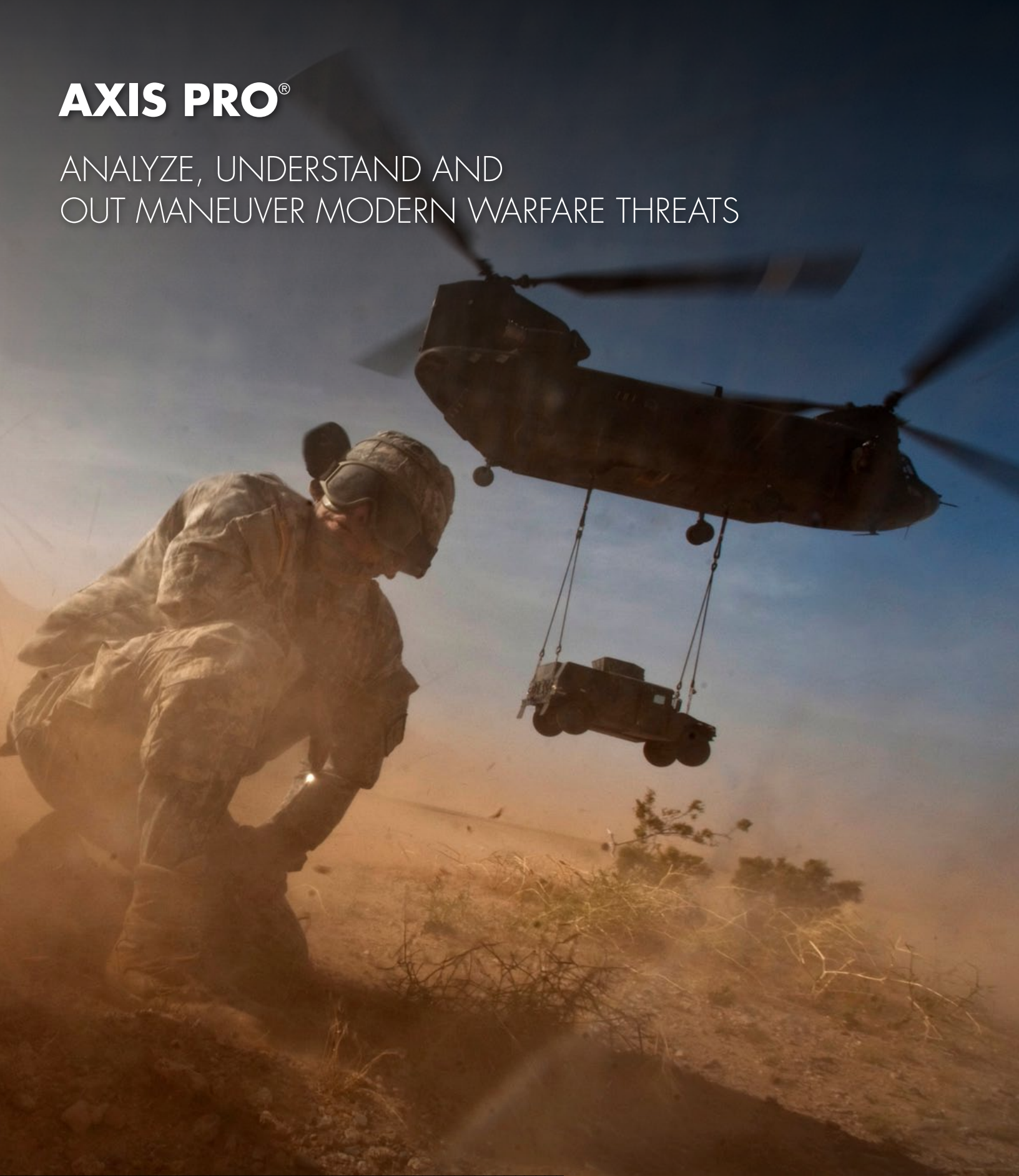


AXIS PRO[®]

ANALYZE, UNDERSTAND AND
OUT MANEUVER MODERN WARFARE THREATS



textronsystems.com

TEXTRON Systems

DATA COLLECTION AND MANAGEMENT

AXIS Pro’s advanced data ingest and management capabilities enable users to accurately manage and analyze data of interest revealing connections, relationships, patterns or trends that can be used to undermine enemy or adversary activities.



In modern warfare, military operations require advanced information solutions that provide critical awareness and understanding at the tactical edge. Meeting this need, AXIS Pro provides a scalable integrated software suite of analysis, visualization and collaboration tools designed to work at any military echelon.

Utilized in support of military operations around the globe, AXIS Pro is a proven solution that greatly simplifies analytic investigation, organization, collaboration and the development of actionable intelligence and contextual understanding of socio-cultural information.

ADVANCED DATA DISCOVERY

By equipping analysts with advanced search capabilities across a wide network of sources, AXIS Pro users are able to quickly and proactively uncover vast amounts of information relating to enemy and adversary activities. A large military inspired object model lies at the heart of the system to support military operations across echelons.

Local and remote federated searches provide timely access to vast and diverse data sources. Semantic text extraction automates the identification and capture of facts, figures and references from unstructured text documents and reports.

CASE MANAGEMENT

Robust case management tools enable analysts to easily store and share analyzed information in detailed case files. Export of cases with all associated data (entities, word documents, PDF documents, HTML pages, and images) allows for ease of information flow among echelons.

Powerful data modeling and predictive analysis capabilities dynamically relate individuals, events, hostile activity, mission files and other case relevant data.

ALERT AND AREA-OF-INTEREST MANAGERS

User-defined alerts (visual and auditory) enable analysts to automate monitoring and notification of information, events or changes associated with designated areas of interest (e.g., country, regions, cities or specific locations).

ADVANCED DATA VIZUALIZATION AND ANALYSIS

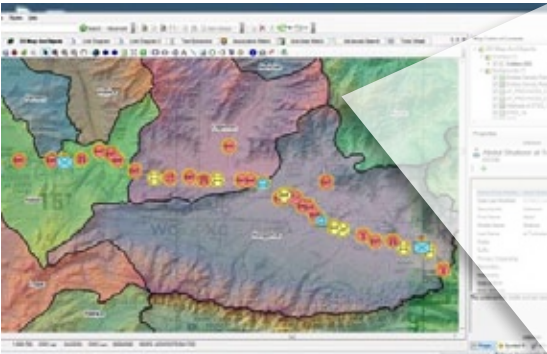
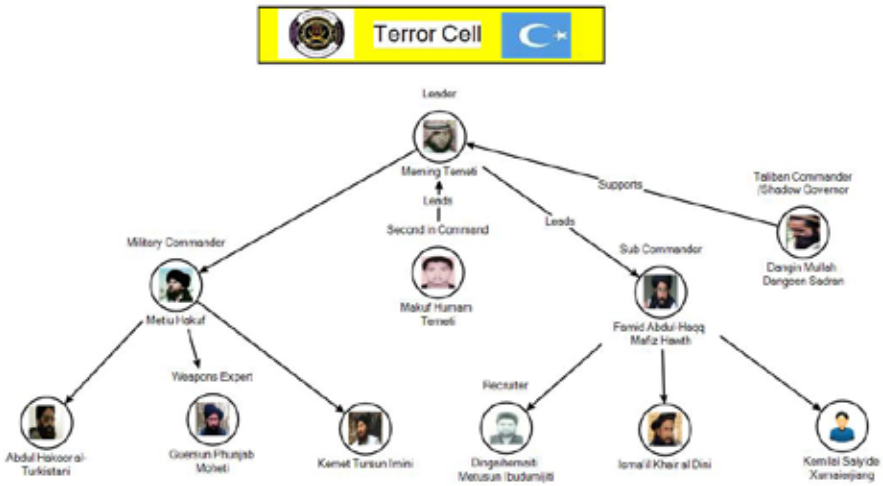
AXIS Pro provides a powerful set of information analysis and visualization capabilities to help analysts visualize patterns and formulate predictive analysis of target information.

INTUITIVE GRAPHICAL INTERFACE

An easy-to-use and learn graphical display enables users to visualize and understand complex information through intuitive charts, maps and diagrams in a variety of presentation methods.

Easy-to-use and understand Link Analysis capabilities enable analysts to identify and track associations among individuals, buildings, locations, transactions, events and other conspicuous activities.

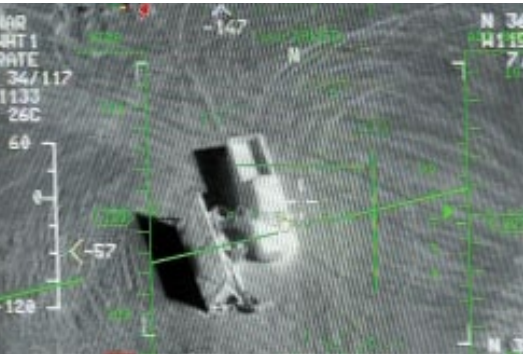
Time wheel and timeline analysis tools enable analysts to visually observe and analyze time and date patterns associated with enemy activities.



Geospatially Mapped Entities and Area of Interest (AOI)



High Resolution Satellite Image of AOI



AUS Sensor Image Detailing Adversary Activities

GEOSPATIAL ANALYSIS

A comprehensive array of mapping capabilities enables users to organize and display data with geospatial context portraying pending threats, capabilities and intentions. Incorporation of ESRI’s Map Objects further empowers analysts with geospatial analysis capabilities, as well as the ability to save and export shape (.shp) files and overlays (.lyr) to ESRI ArcGIS™ software packages. AXIS Pro map object files may also be exported as .kml and .kmz files for display within Google Earth™.

HUMAN TERRAIN AND SOCIAL CULTURAL ANALYSIS

Supplementing the honed skills of HUMINT analysts, users of AXIS Pro are able to transform random, disconnected cultural cues and events into predictable and actionable portraits of potential activity. By incorporating AXIS Pro capabilities into the decision-making process, commanders are empowered with relevant, socio-cultural information and knowledge with which to enhance operational effectiveness.

COLLABORATION AND INTEROPERABILITY



MULTI-AGENCY COMMUNICATION

AXIS Pro includes a unified collaborative framework that enables information sharing across networked units. Within the collaborative work environment, analysts are able to share critical information to support operations.

INTEROPERABILITY

AXIS Pro allows analysts to visualize and edit data from multiple sources including DCGS-A, TIGR (Tactical Ground Reporting System), Microsoft® Access, MSDE, SQL, Sybase, Oracle and live data feeds. Through specialized plug-ins, AXIS Pro interoperates and shares data with temporal, pattern and geospatial analysis tools, allowing the tracking of individuals, events, organizations, places/facilities and equipment. Easy copy-and-paste interoperability with Microsoft Office™ applications (Word, Excel) enables analysts to spend less time entering data, providing more time for analysis. For the disconnected soldier, a simple connection allows for collected data to be fed back into the cloud for inclusion in broader analytical products.

This software is classified on the U.S. Munitions List as requiring an export license from the Office of Defense Trade Controls Licensing, U.S. Department of State, prior to export from the United States.

Textron Systems

Advanced Information Solutions

P.O. Box 91269

Austin, TX 78709-1269

Phone: 512-358-2600, Option 2 for Sales

Email: AIS_Sales@textronsystems.com

Textron Systems Advanced Information Solutions is a business of Textron Systems.
© 2014 Overwatch Systems, Ltd. All rights reserved. AXIS Pro is a trademark of Overwatch Systems Ltd. Google Earth and ArcGIS are trademarks of their respective companies. Photography courtesy of the DoD. 0814

TEXTRON Systems