

Efficient lighting intelligence DALI presence detectors and gateways





Intelligent lighting control Added efficiency for use in the commercial sector

Thanks to their outstanding detection quality, sophisticated functions and exceptionally easy commissioning and programming, premium presence detectors from ThebenHTS are the discerning customer's devices of choice. When combined with intelligent lighting management via the DALI bus system, they really come into their own. Addressing and grouping multiple DALI lamps using theRonda P360-330 devices, for example, has never been simpler.

theRonda and DALI: perfectly synchronised lighting intelligence and energy efficiency.

The lighting control dream team

Presence detectors and DALI



theRonda DALI presence detectors

Lighting intelligence and energy efficiency in perfect harmony

Presence detectors from ThebenHTS are the perfect solution for presence-dependent and efficient lighting control. With a detection area of up to nine metres, theRonda S standard presence detectors are especially well suited to smaller offices, ancillary rooms with daylight and wet rooms. The P performance range of the theRonda detectors really come into their own in environments such as open-plan offices and classrooms, thanks to a detection area of up to 24 m and Master/Master parallel switching.

theRonda DALI presence detectors now combine all the advantages of the **DALI bus system** with the legendary standards of premium quality delivered by ThebenHTS – all wrapped up in an intelligent, efficient and flexible package. They can also be connected to **conventional buttons**. Customers can select freely from all common switch ranges and enjoy maximum freedom of design.

The assignment of the buttons to individual lighting groups can be changed without any problem, even after installation. This does away with the need to make complex adjustments to the wiring. With theRonda DALI presence detectors, **up to three lighting groups** can be controlled using just one DALI line – saving you significant amounts of time and money during installation. If a DALI operating device needs to be replaced and a new one is installed, the presence detector identifies the new one automatically and performs configuration itself.



Child's play

The highlight is the extremely simple method of addressing DALI lamps using theRonda P360-330. In this way, all the connected DALI lamps can be grouped easily via button, or via the SendoPro remote control, in no time at all. It couldn't be easier.

Simply intelligent

Great reasons to choose DALI presence detectors

Installation has never been easier



One line for three groups

Control two to three lighting groups with a single DALI line. This means fewer lines and reduces the amount of time and money spent on installation. No rewiring is required if any changes are made later on.



Easy addressing

Has grouping different DALI lamps always been a difficult task? Now you can say goodbye to all that. With theRonda P360-330 devices, you can group all the connected DALI lamps easily via button, or via the SendoPro remote control, in just a few steps.



For every application

theRonda DALI presence detectors are available as "broadcast" versions with one lighting channel and as "addressable" devices for two to three lighting channels on a single DALI line.



For conventional buttons

theRonda DALI presence detectors can be connected to virtually any button from all common switch ranges, offering customers maximum freedom of design.



Automatic configuration

If a DALI operating device is replaced due to a defect, for example, the presence detector identifies the new one and performs configuration automatically – without any additional work required from an electrician.



Flexible channel assignment

Do you want to change the button assignment after installation? No problem! Assignments to lighting groups can be changed easily via remote control at any time, even at a later stage – without the need for complex changes to the wiring.

Easy to program



Clever teach-in function

theRonda learns the desired brightness value at the touch of a button. Simply press and hold the button for 15 seconds when the required lighting conditions are reached, and this will store the brightness setpoint value. Alternatively, you can use the remote control to teach in the value.



Configurable sensitivity

How sensitively theRonda reacts to movement in the room is completely up to you. The PIR sensors can be conveniently set using the remote control – according to the individual requirements of the users.



Practical test function

With the test function, the detection area can be established, set and optimised immediately after installation. Even in daylight – when conventional presence detectors do not normally react. This prevents detection errors.

Intelligent lighting control



Constant lighting control

The constant light measurement continuously compares artificial light and daylight to one another, and controls the required amount of artificial light accordingly. No matter how changeable the weather, the lighting conditions inside the room remain pleasantly constant.



Three control speeds

Three control speeds are available for the constant light control function. This allows you to set theRonda perfectly in line with your application.



Self-learning time delay

The time delay changes automatically to between two and twenty minutes depending on how people behave inside the room. This saves energy, increases comfort and allows people to work exactly how they wish.

More application comfort



Safety thanks to orientation light

In buildings such as hotels or hospitals, an orientation light enhances the feeling of safety. If movement occurs, the lighting is dimmed up to the setpoint value and then back down to the level of the orientation light after a defined time delay.



Constant light measurement

theRonda constantly measures the brightness in the room. This means that when there is sufficient daylight, the detector switches the artificial lights off, and when there is not enough it switches them back on. This improves comfort and reduces energy consumption.



Easy-to-use remote control

With the theSenda P or SendaPro remote control, settings can be conveniently made and changed from the ground. This reduces the installation time and lowers costs. Users can call up things such as two lighting scenarios via the theSenda S remote control.

Low costs



Maximum efficiency

Up to 50 DALI EBs can be connected to a master device. This makes it possible to maintain control over even large rooms – like classrooms, sports halls or offices – using just one master device.



Low standby power consumption

theRonda not only saves a great deal of energy in its function as a presence detector with its sophisticated technology. Thanks to the new DALI power unit, the standby power consumption is also reduced to less than 0.3 W.



Versatile functions and benefits



For room heights of up to 10 metres

theRonda P stands out thanks to its exceedingly large, round detection area. Ideal for large, tall rooms such as entrance areas, sports halls, warehouses and open-plan offices.



Simplest energy-saving setting

"eco" stands for optimum switching behaviour. "eco plus" for maximum energy savings. You decide what is best for you at the push of a button. Exactly how you like it. And exactly how you need it. There is no easier way to save energy.



Splash-proof

Once installed, theRonda S has a protection rating of IP 54, making it the ideal choice for wet rooms. Hardly surprising, then, that it blows all other detectors in its class out of the water.



Practical short-term presence

In the event of a short-term presence, the light is only on for two minutes. This is because theRonda detects whether and how long someone is in the room. This means that anyone who enters the room for a short period of time does not automatically trigger the time delay that has been set, but does not have to go without light.



Individual lighting scenarios

As bright as day or softly dimmed: you can choose between two lighting scenarios, which you can define however you like. For example, in the case of conference rooms where the light has to be dimmed for presentations. Settings can be made, saved and changed quickly and easily using the remote control.



Intelligent parallel switching

theRonda enables the lighting conditions to be set in the detection area of each device independently and individually, using Master/Master parallel switching. An ideal feature if different lighting conditions are to be balanced between areas close to windows and the room's interior – in open-plan offices, for instance.

Addressing has never been simpler

Via button or remote control



This is how it works!

Discover the easy, intuitive way to address the Ronda P360-330

www.youtube.com/TheThebenAG

With the Ronda DALI P360-330 devices, up to 50 connected DALI lamps can be grouped easily via button, or via the SendoPro 868-A remote control, in no time at all. In just four easy steps. This is how it works:



Step 1

After installation, the Ronda P360-330 automatically identifies all connected DALI lamps, assigns short addresses and manages them in a list.

The lamps are operated in broadcast mode with the 100 % switch-on dimming value.

The detector waits for configuration and indicates this using an LED flashing pattern.



Step 2

With five short presses and one long press of any button, the grouping process begins.

A DALI lamp starts to pulse. Press the button once to assign it to group 1, twice to assign it to group 2, and three times to assign it to group 3.

It's even easier to carry out assignment using the SendoPro 868-A remote control.



Step 3

The next lamp pulses. Proceed in the same way as step 2, until all the lamps have been assigned to the three groups.

Visual feedback then follows, in the form of automatic dimming of all lamps to 20 %.



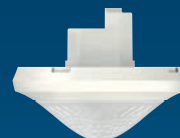
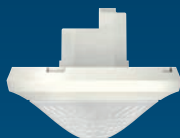
Step 4

Once all the DALI EBs have been configured, the Ronda P enters normal operation and configuration is complete.

Using buttons or the remote control, the group assignment can be checked and changed easily if required.

DALI presence detectors

Technical data



Features	theRonda S360-110 DALI UP	theRonda P360-110 DALI UP
----------	------------------------------	------------------------------

Detection area seated/walking*	circular Ø 4 / 8 m	circular Ø 6 / 24 m
Detection angle	360°	360°
Installation height	2–4 m	2–10 m
Lighting channels	1 (broadcast)	1 (broadcast)
Maximum number of DALI operating devices	50	50
Lighting time delay	10 s–60 min	10 s–60 min
Brightness setting range	10–3000 lx	10–3000 lx
Light measurement	1 x mixed light	1 x mixed light
Standby brightness	1–25%	1–25%
Standby time	0 s–60 min/permanently on	0 s–60 min/permanently on
Remote operation	yes	yes
Operating voltage, frequency	110–230 V AC, 50–60 Hz	110–230 V AC, 50–60 Hz
Power consumption	~ 0.3 W	~ 0.3 W
Permissible ambient temperature	–15 °C to +50 °C	–15 °C to +50 °C
Protection rating (when installed)	IP 54	IP 54
Number of buttons	1	1
Master/Master and Master/Slave	yes	yes
Area restriction	yes	yes

Item numbers

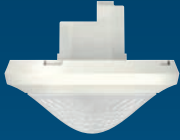
Item no. white (WH)	2080580	2080040
Item no. grey (GR)	2080581	2080041
Item no. black (BK)	–	–
Item no. silver (SR)	–	–

Optional accessories

theSenda S remote control	9070911	9070911
theSenda P remote control	9070910	9070910
SendoPro 868-A management remote control	9070675	9070675
Back box white (WH)	9070912	9070912
Back box grey (GR)	9070913	9070913
Back box black (BK)	–	–
Back box silver (SR)	–	–
Ceiling installation box	9070917	9070917
Cover clip	9070921	9070921

* Details at an installation height of 3 m

** When using a DALI sensor with a PLC. Please note the information at www.theben.de/planospot-dali



theRonda
P360-330 DALI UP



thePrema
S360 DALI UP



PlanoSpot DALI **

circular Ø 6 / 24 m	square 5 x 5 m / 7 x 7 m	square 4.5 x 4.5 m / 7 x 7 m
360°	360°	360°
2–10 m	2–3.5 m	2–3.5 m
3 (addressable)	1 (broadcast)	–
50	25	–
10 s–60 min	10 s–60 min	–
10–3000 lx	5–3000 lx	–
3 x mixed light	1 x mixed light	3 x mixed light
1–25%	1–25%	–
0 s–60 min/permanently on	0 s–60 min/permanently on	–
yes	yes	yes
110–230 V AC, 50–60 Hz	230 V AC, 50 Hz	DALI (typ. 16 V)
~ 0.3 W	~ 0.5 W	~ 3 mA/5.5 mA with LED
–15 °C to +50 °C	0 °C to +50 °C	0 °C to +50 °C
IP 54	IP 40	IP 40
up to 3	1	–
yes	yes	–
yes	no	no
2080045	2070525	2030110
2080046	2070526	–
–	–	with PlanoCover 76 BK (9070977)
–	–	with PlanoCover 76 SR (9070978)
9070911	9070911	–
–	9070910	–
9070675	9070675	9070675
9070912	9070912	9070949
9070913	9070913	–
–	–	9070950
–	–	9070951
9070917	9070917	–
9070921	–	–



Link to building automation DALI Gateway KNX plus

The Theben DALI Gateway KNX plus links up to 64 participants with the KNX building automation. The operating devices can be controlled individually, or arranged in groups of up to 16 participants. The integrated scenario module offers up to 16 lighting moods – individually programmable and tuned to the appropriate lighting conditions.

When used in conjunction with ThebenHTS DALI presence detectors, the gateway reveals all the advantages it offers for efficient, energy-saving operation. The benefits for open-plan offices, purpose-built structures and upscale residential construction are clear:

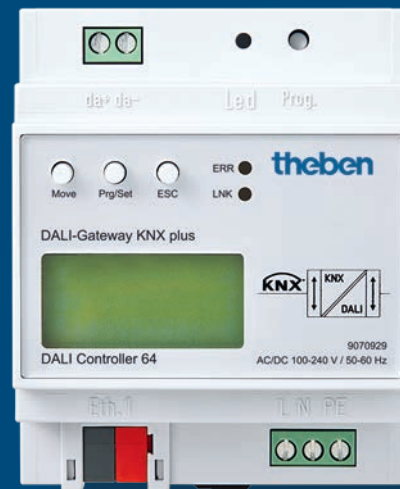
- **Easy installation and commissioning** via tablet, operating buttons or ETS instead of complex wiring.
- **Flexible switching, control and monitoring** of several lamps via the integrated web server or via the device itself.
- **Easy replacement or fast reprogramming** of all or individual operating devices as soon as requirements change.



Put simply, the DALI Gateway KNX plus is the perfect combination of intelligent building automation and efficient lighting control.

Does more with light automatically

DALI Gateway KNX plus



Product description

- The DALI Gateway KNX plus acts as an interface between the DALI system and the KNX bus
- Up to 64 DALI participants can be connected to one DALI output
- Individual control of up to 64 EBs
- Up to 16 groups can be switched, dimmed or set to a defined value
- Operation of individual-battery emergency luminaires in accordance with EN 62386-202
- Emergency lighting systems with central batteries are also supported
- Status and error information for a visualisation
- Scenario module for up to 16 different groups
- An effect module for sequential control
- LC display (2 x 12 characters) for navigation menu during commissioning and configuration
- DALI commissioning is carried out via the operating controls on the device, via the integrated web server or via the ETS plug-in.

Technical data

Operating voltage KNX	Bus voltage KNX, max. 30 V
Operating voltage	100 – 240 V AC or DC
Frequency	50–60 Hz
DALI bus voltage	16–20 V DC
Ethernet connection	100 Mbit/second
Maximum input power	7 W
Type of installation	DIN-rail
Maximum cable cross-section DALI bus, D+, D-	Screw terminal 2 x 1–2.5 mm ² single-wire and multi-wire
Maximum cable cross-section of power supply	Screw terminal 3 x 1–2.5 mm ² single-wire and multi-wire
Connection type KNX	KNX bus terminal (WAGO plug-in terminal 243)
Network connection type	RJ45
Ambient temperature	-5 °C to +45 °C
Protection rating	IP 20
Protection class (according to IEC 1140)	I
Overvoltage category	III
Item number	9070929

Theben is a member of:



theben

Theben AG
Hohenbergstraße 32
72401 Haigerloch
Germany
Phone +49 7474 692-0
Fax +49 7474 692-150
info@theben.de
www.theben.de

9900666 0517 | Subject to technical changes and improvements.

