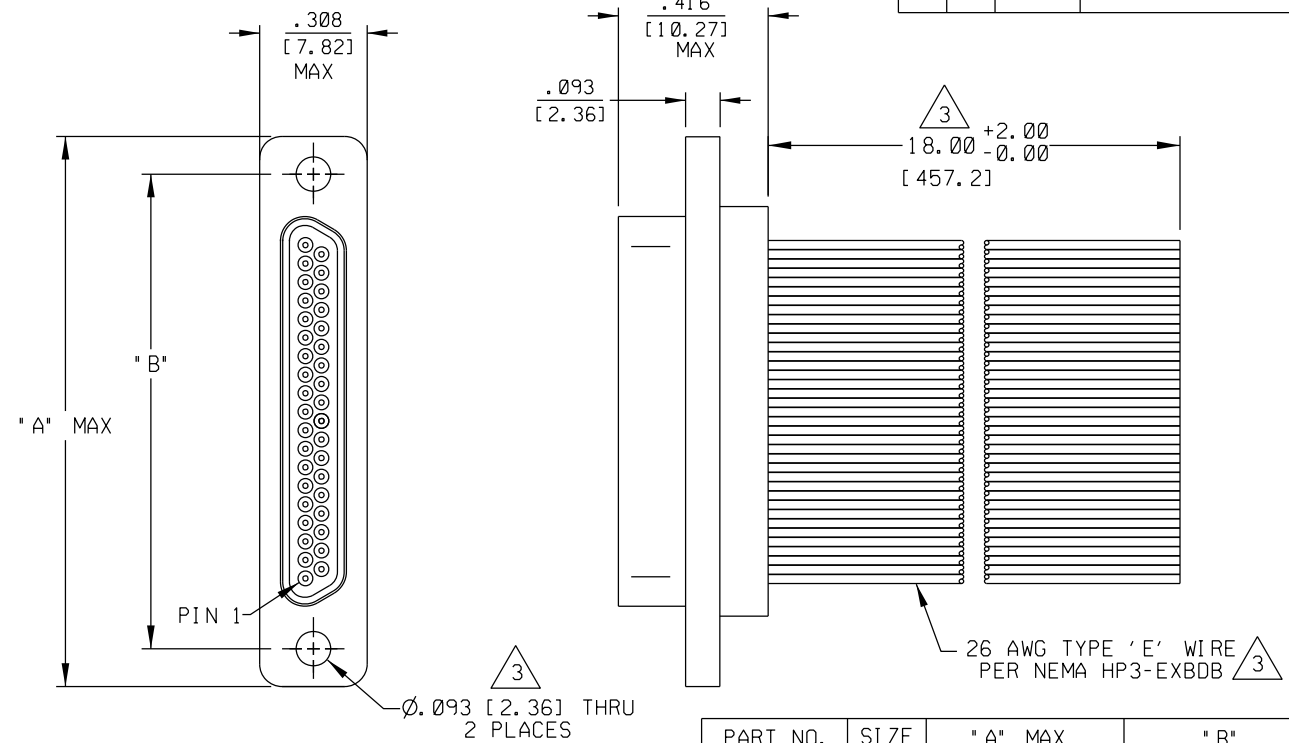


PART REV	DWG ISSUE	DATE	ECN NO.	APPVD BY	REL BY

COLOR CODE (PER MIL-STD-681) 3

1	BLK	19	W/GRY
2	BRN	20	W/BLK/BRN
3	RED	21	W/BLK/RED
4	ORG	22	W/BLK/ORG
5	YEL	23	W/BLK/YEL
6	GRN	24	W/BLK/GRN
7	BLU	25	W/BLK/BLU
8	VIO	26	W/BLK/VIO
9	GRY	27	W/BLK/GRY
10	WHT	28	W/BRN/RED
11	W/BLK	29	W/BRN/ORG
12	W/BRN	30	W/BRN/YEL
13	W/RED	31	W/BRN/GRN
14	W/ORG	32	W/BRN/BLU
15	W/YEL	33	W/BRN/VIO
16	W/GRN	34	W/BRN/GRY
17	W/BLU	35	W/RED/ORG
18	W/VIO	36	W/RED/YEL
		37	W/RED/GRN



PART NO.	SIZE	"A" MAX	"B"
834111070	9	.785 [19.94]	.565 [14.35]
834121070	15	.935 [23.75]	.715 [18.16]
834131070	21	1.085 [27.56]	.865 [21.97]
834141070	25	1.185 [30.10]	.965 [24.51]
834151070	31	1.335 [33.91]	1.115 [28.32]
834161070	37	1.485 [37.72]	1.265 [32.13]

4. PERFORMANCE: MEETS OR EXCEEDS REQUIREMENTS OF MIL-DTL-83513

3 CONSULT FACTORY FOR AVAILABLE OPTIONS.

2 MATERIALS:
 SHELL: 6061-T6 ALUMINUM PER AMS-QQ-A200/8, NICKEL PLATED PER AMS 2404
 INSULATOR: PPS PER MIL-M-24519 GST-40F, COLOR: BLACK
 PIN CONTACTS: C17200 BERYLLIUM COPPER PER ASTM-B194, GOLD PLATED PER ASTM B488

1. MARKING: UMI, DATE CODE, UMI P/N.

NOTES: UNLESS OTHERWISE SPECIFIED.

QUALITY SYMBOLS MAJOR CRITICAL SPC 	UNLESS SPECIFIED: ALL DIMENSIONS IN INCHES/MM	SCALE 3:1	DWG SIZE B	THIRD ANGLE PROJECTION	REVISE ON CAD ONLY	
	GENERAL TOLERANCES: 3 PLACE ±.005/.13 2 PLACE ±.01/.25 ANGULAR ±2°	DRAWN BY & DATE DW 10-7-11	TITLE: MICRO-D PLUG (PINS), SIZE 9 THRU 37, WIRED, MRXXP0-26E5-18.0-S01			
	UMi-Mate CAGE CODE 58967	CHECKED BY & DATE	MATERIAL: 2 3 Uti-Mate Connector Inc.			
		APPROVED BY & DATE	CAD FILENAME SD-8341 X1 070.DGN	PART NO. SEE ABOVE	DRAWING NO. SD-8341 X1 070	SHEET NO. 1 OF 1

THIS DRAWING CONTAINS INFORMATION THAT IS PROPRIETARY TO ULTI-MATE INCORPORATED AND SHOULD NOT BE USED WITHOUT WRITTEN PERMISSION.