

10/100 BASE-T SINGLE PORT TRANSFORMER MODULES

P/N: 16ST1086

Page : 1/1

Feature



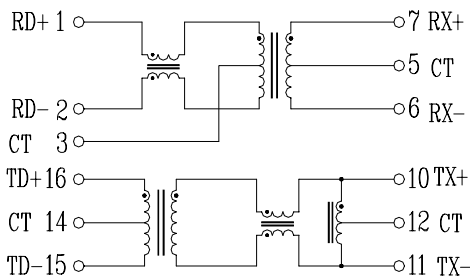
- Meet all IEEE 802.3 and ANSI X 3.263 standards including 350μH OCL with 8mA Bias.
- IC grade transfer-molded package withstands 235°C IR reflow.
- Patented interlock base construction for high reliability
- Rise time optimized for National's DP83843.
- Operating Temperature range: 0°C to +70°C.
- Storage temperature range: -25°C to +125°C.

Electrical Specifications @ 25°C

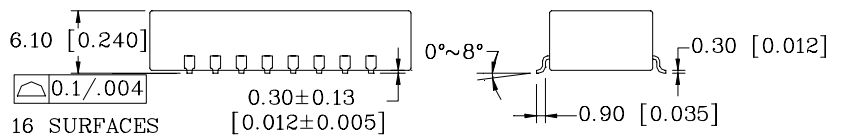
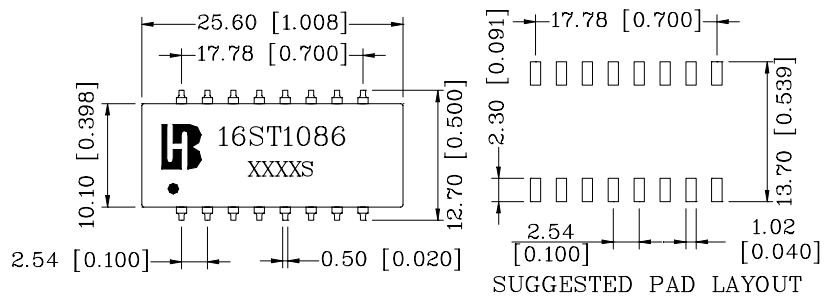
Part Number	Turns Ratio (±5%)		OCL (uH Min) @ 100KHz/0.1Vrms with 8mA/DC Bias	DCR (Ω Max)	Rise Time (nS Typ)	HI-POT (Vrms)	Insertion Loss (dB Max)	
	TX	RX					0.3-100 MHz	100-125MHz
16ST1086	1CT:1	1CT:1CT	350	0.9	2.5	1500	-1.0	-1.5

Part Number	CMR TX/RX(dB Min)			Return Loss (dB Min)			Cross talk (dB Min)		DCMR TX/RX(dB Min)		
	30MHz	60MHz	100MHz	0.3-40MHz	40-50MHz	50-80MHz	0.3-60MHz	60-100MHz	30MHz	60MHz	100MHz
16ST1086	-42/-40	-36/-36	-33/-33	-20	-18	-14	-45	-35	-42/-40	-35/-30	-28/-25

Schematic



Mechanical



Units: mm[Inches] Tolerances: xx.x0±0.25[0.010]

0.xx±0.05[0.002]