



ISDN S- INTERFACE TRANSFORMERS/ MODULES SMALL SMT PACKAGE

ELECTRICAL SPECIFICATION @25°C

MODEL NO.	Turns Ratio (Line:Chip) (±2%)	Line Side Inductance (mH min.)	Interwinding Capacitance (pf max)	Line Side Leakage Inductance (uH max)	DCR Line Side (Ω ±15%)	DCR Chip Side (Ω ± 15%)	Schematics
UT20793-**TS	1split:1split	30	100	5	2.9	2.8	A
UT20773-**TS	1CT:1CT						B
UT20795-**TS	1split:2split	30	100	5	3.0	5.6	A
UT20775-**TS	1CT:2CT						B
UT20798-**TS	1split:2.5split	30	100	5	3.0	6.8	A
UT20778-**TS	1CT:2.5CT						B

MODEL NO.	Common mode choke									
	-00TS		-05TS		-10TS		-50TS		-5MTS	
	OCL (uH)	DCR (Ω max.)	OCL (uH)	DCR (Ω max.)	OCL (uH)	DCR (Ω max.)	OCL (uH)	DCR (Ω max.)	OCL (mH)	DCR (Ω max.)
UT20793-**TS	None		50	0.4	100	0.6	500	1.4	5.0	2.0
UT20773-**TS	None		50	0.4	100	0.6	500	1.4	5.0	2.0
UT20795-**TS	None		50	0.4	100	0.6	500	1.4	5.0	2.0
UT20775-**TS	None		50	0.4	100	0.6	500	1.4	5.0	2.0
UT20798-**TS	None		50	0.4	100	0.6	500	1.4	5.0	2.0
UT20778-**TS	None		50	0.4	100	0.6	500	1.4	5.0	2.0

Note: 1. Test Condition: Inductance : Main Transformers 10KHz 100mVrms. CMC 100KHz 20mVrms.

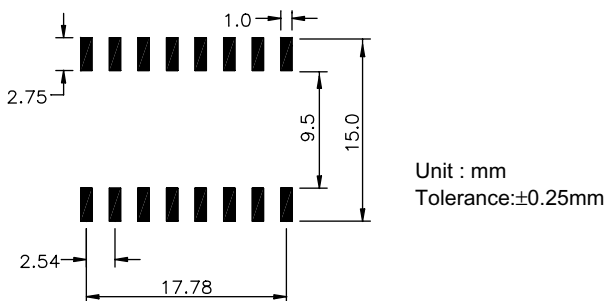
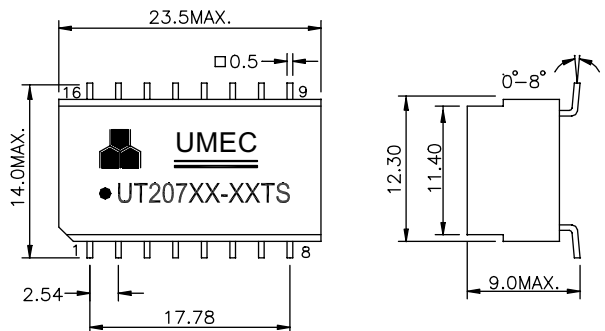
2. Leakage Inductance & Interwinding Capacitance : 100KHz 100mVrms.

3. For RoHS compliant products, the Ordering Code: TG-Model No. ex. TG-UT20793-00TS

4. Moisture sensitivity level (MSL) =1

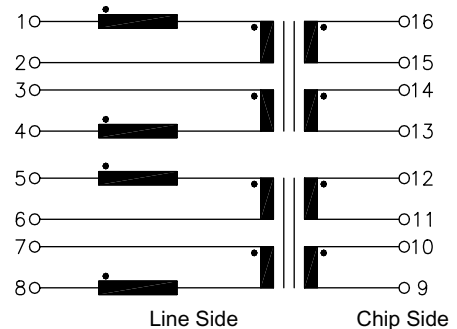


PACKAGES & SCHEMATICS

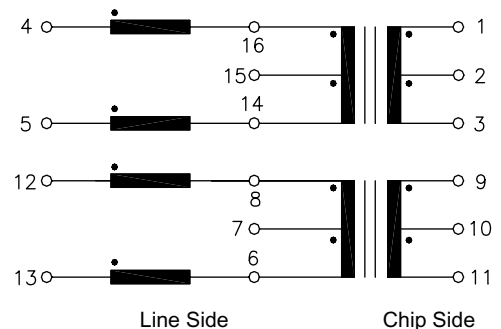


*Specifications are subject to change without prior notice.

SCHEMATICS A



SCHEMATICS B





ISDN S- INTERFACE TRANSFORMERS/ MODULES SMALL SMT PACKAGE

- Meets CCITT I.430 pulse waveform template and impedance Profile.
- Developed for enhanced EMC performance.
- Excellent longitudinal balance.
- Low or high frequency choke options available.
- Non-RoHS soldering peak temperature $230\pm 5^{\circ}\text{C}$ IR Reflow.
- RoHS compliant soldering peak temperature $245^{\circ}\text{C}(+0/-5^{\circ}\text{C})$ IR Reflow.
- Operating temperature range 0°C to $+70^{\circ}\text{C}$
- Storage temperature range -20°C to $+85^{\circ}\text{C}$
- 4mA Idc Max. Permissible Unbalance DC Current.
- 2000Vrms isolation.

TRANSFORMERS/MODULES SELECTION GUIDE

Chip Manufacturer	Chip Designation	Dual Transformer	Module With 50uH CMC	Module With 100uH CMC	Module With 500uH CMC	Module With 5mH CMC
AMD	AM79C30A/32A	UT20795-00TS UT20775-00TS	UT20795-05TS UT20775-05TS	UT20795-10TS UT20775-10TS	UT20795-50TS UT20775-50TS	UT20795-5MTS UT20775-5MTS
Cologne Chip	HFC-S/S+/SP(A) SPCI(A)	UT20795-00TS UT20775-00TS	UT20795-05TS UT20775-05TS	UT20795-10TS UT20775-10TS	UT20795-50TS UT20775-50TS	UT20795-5MTS UT20775-5MTS
Lucent	T7234/T7250/ T7256/T7259	UT20798-00TS UT20778-00TS	UT20798-05TS UT20778-05TS	UT20798-10TS UT20778-10TS	UT20798-50TS UT20778-50TS	UT20798-5MTS UT20778-5MTS
	T7903	UT20795-00TS UT20775-00TS	UT20795-05TS UT20775-05TS	UT20795-10TS UT20775-10TS	UT20795-50TS UT20775-50TS	UT20795-5MTS UT20775-5MTS
Mietec/Alcatel	MTC-20172 MTK20276	UT20795-00TS UT20775-00TS	UT20795-05TS UT20775-05TS	UT20795-10TS UT20775-10TS	UT20795-50TS UT20775-50TS	UT20795-5MTS UT20775-5MTS
Mitel	MT8930/8931	UT20795-00TS UT20775-00TS	UT20795-05TS UT20775-05TS	UT20795-10TS UT20775-10TS	UT20795-50TS UT20775-50TS	UT20795-5MTS UT20775-5MTS
Motorola	MC145474/ 145475	UT20793-00TS UT20773-00TS	UT20793-05TS UT20773-05TS	UT20793-10TS UT20773-10TS	UT20793-50TS UT20773-50TS	UT20793-5MTS UT20773-5MTS
	MC145574	UT20798-00TS UT20778-00TS	UT20798-05TS UT20778-05TS	UT20798-10TS UT20778-10TS	UT20798-50TS UT20778-50TS	UT20798-5MTS UT20778-5MTS
	MC145575	UT20795-00TS UT20775-00TS	UT20795-05TS UT20775-05TS	UT20795-10TS UT20775-10TS	UT20795-50TS UT20775-50TS	UT20795-5MTS UT20775-5MTS
National	TP3420/3421	UT20795-00TS UT20775-00TS	UT20795-05TS UT20775-05TS	UT20795-10TS UT20775-10TS	UT20795-50TS UT20775-50TS	UT20795-5MTS UT20775-5MTS
SGS Thomson	ST5420/5421	UT20795-00TS UT20775-00TS	UT20795-05TS UT20775-05TS	UT20795-10TS UT20775-10TS	UT20795-50TS UT20775-50TS	UT20795-5MTS UT20775-5MTS
Infineon (Siemens)	PEB2080-81/-84/- 85/-86/2186 PSB2115/2154	UT20795-00TS UT20775-00TS	UT20795-05TS UT20775-05TS	UT20795-10TS UT20775-10TS	UT20795-50TS UT20775-50TS	UT20795-5MTS UT20775-5MTS
	PEB20590/20591 PSB3081/-86/ 3186/21150 PSB21381-84SX	UT20793-00TS UT20773-00TS	UT20793-05TS UT20773-05TS	UT20793-10TS UT20773-10TS	UT20793-50TS UT20773-50TS	UT20793-5MTS UT20773-5MTS
	PEB20590	UT20793-00TS UT20773-00TS	UT20793-05TS UT20773-05TS	UT20793-10TS UT20773-10TS	UT20793-50TS UT20773-50TS	UT20793-5MTS UT20773-5MTS
		UT20795-00TS UT20775-00TS	UT20795-05TS UT20775-05TS	UT20795-10TS UT20775-10TS	UT20795-50TS UT20775-50TS	UT20795-5MTS UT20775-5MTS
Yamaha	YM7405B	UT20795-00TS UT20775-00TS	UT20795-05TS UT20775-05TS	UT20795-10TS UT20775-10TS	UT20795-50TS UT20775-50TS	UT20795-5MTS UT20775-5MTS

* CMC : COMMON MODE CHOKE

DATA SHEET 06-20 JUL/2010
2OF 2