



# HALF WAVE CONTROLLER PCB

**UV6D**

X10345

## INTRODUCTION

This single phase half wave controller with integral 10A device has been designed to operate on either 110V or 240V inputs. Its simple 2 wire connections plus Earth allows for easy installations. The output is set by use of a 25K potentiometer with a cermet mounted on the PCB for minimum settings when required.

## APPLICATIONS

Vibrator coils

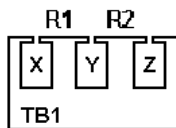
**RoHS Compliant**  
 Directive  
 2002/95/EC

## FEATURES

- Solid state reliability.
- Dual voltage.
- Simple wiring.
- Adjustable minimum output
- Energy Saving.



## INSTALLATION

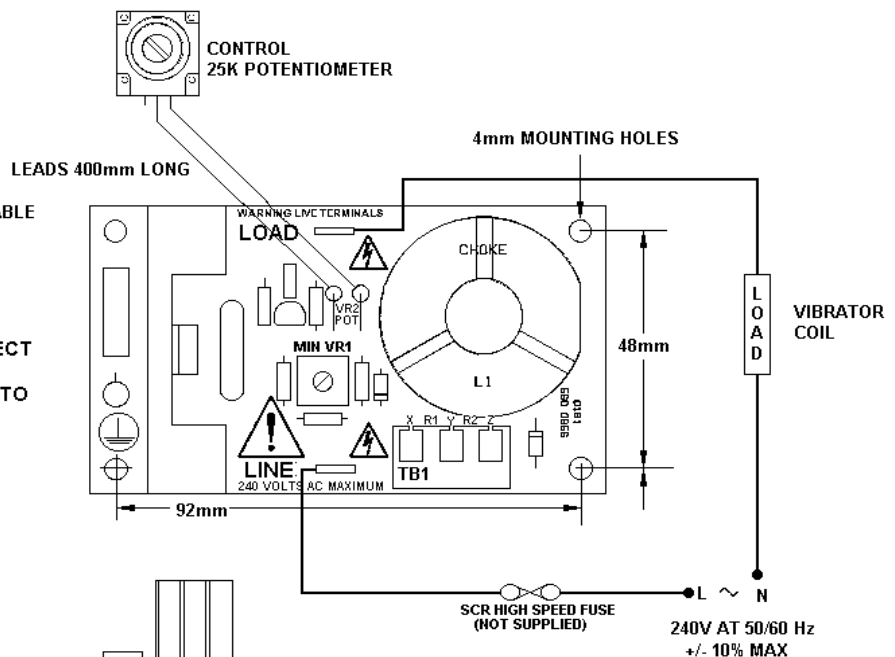


VOLTAGE SUPPLY SELECTION TABLE

V rms	X-Y	Y-Z	X-Z
110V	—	—	6K8
240V	6K8	6K8	—

4 WATT RESISTORS

FOR REQUIRED VOLTAGE SELECT APPROPRIATE RESISTOR (S) AND CONNECT TO TERMINALS X, Y, Z



THIS UNIT MUST BE EARTHED  
EARTH CONNECTION

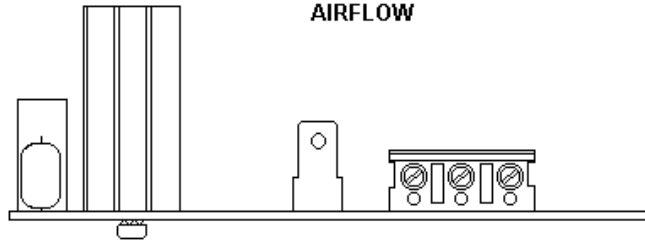
NOTE:  
SIDE ELEVATION SHOWING  
HEATSINK EARTHING POINT

WARNING: ISOLATE FROM MAINS SUPPLY BEFORE COMMENCING ANY SERVICE WORK. (SEE SRA AND ITA DATA SHEETS)  
NOTE: REMOTE POTENTIOMETER LEADS ARE AT HAZARDOUS LIVE POTENTIAL AND OTHER COMPONENTS ARE, OR IN FAULT CONDITIONS MAY BECOME HAZARDOUS LIVE.

## **INSTALLATION**

### COOLING REQUIREMENT

**NOTE:- THIS UNIT  
SHOULD BE MOUNTED  
HORIZONTALLY TO AID  
AIRFLOW**



## **SPECIFICATIONS**

Supply	110 or 230Vac $\pm$ 10% @ 50/60Hz
Unit RMS Current Rating	6A
Peak Single Cycle Surge Current	100A
Thyristor Limiting RMS Current	10A
I <sup>2</sup> t for Fusing (10ms)	18A <sup>2</sup> s
Maximum Peak Voltage	600V
Minimum Operating Current	200mA
Storage Temperature Range	0-85°C
Operating Temperature	0-65°C

## **FUSING**

It is recommended to use semiconductor (fast acting) type fuses or circuit breakers (Semiconductor - MCB) for unit protection. On initial 'switch on' some loads may need an increased factor of safety (F of S) for unit and/or device protection. (See SRA Datasheet for further information).

## **CE MARKING**

This product family carries a "CE marking". This controller needs a suitable remote filter. For information see recommendation section and contact our sales desk. (See Declaration of Conformity).

## **RECOMMENDATIONS**

Other documents available on request, which may be appropriate for your application:-

<b>CODE</b>	<b>IDENTITY</b>	<b>DESCRIPTION</b>
X10229	RFI	Filtering recommendations - addressing EMC Directive
X10213	ITA	Interaction, uses for phase angle and for burst fire control.
X10255	SRA	Safety requirements - addressing the Low Voltage Directive (LVD) including:- Thermal data/cooling ; "Live" parts warning & Earth requirements; Fusing recommendations.
AP02/4	COS	UAL Conditions of sale.

**NOTE** It is recommended that installation and maintenance of this equipment should be done with reference to the current edition of the I.E.E. wiring regulations (BS7671) by suitably qualified/trained personnel. The regulations contain important requirements regarding safety of electrical equipment (For International Standards refer to I.E.C. directive IEC 950).

## **ORDER CODE**

State part number: UV6D + voltage.



## **UNITED AUTOMATION LIMITED**

1Southport Business Park  
Kew  
Southport, PR8 4HQ  
ENGLAND

Page No. 2 of 2

Tel: 0044 (0) 1704 – 516500 Main  
Tel: 0044 (0) 1704 – 516516 Sales  
Fax: 0044 (0) 1704 – 516501  
Enquir1@united-automation.com

Issue 2

Date 05/12/01

