

PIEZO BUZZER (SELF DRIVE TYPE)



SOUND PRESSURE LEVEL

OSCILLATING FREQUENCY

ALLOWABLE INPUT VOLTAGE

CURRENT CONSUMPTION

CASE MATERIAL

LEAD PIN MATERIAL

OPERATING TEMP. RANGE

STORAGE TEMP. RANGE

WEIGHT

APPLICATIONS

- Clocks
- Office equipments, machine tools, toys, video games, etc.
- Automatic controlling devices, calculators.
- Home appliances equipments (microwave, oven, air conditioner, etc.)
- Smoke alarms.

USE24332

83dB min. /30cm/DC 9V

3.4 ± 0.5KHz

DC 3 to 27V

9mA max. /DC 9V

PC (UL 94V-2)

Phosphor Bronze

-20°C to +70°C

-40°C to +85°C

3.5 gms

USE24338PA

(24338PB)(24338PC)

83dB min. /30cm/DC 9V

3.8 ± 0.5KHz

DC 3 to 27V

9mA max. /DC 9V

PC (UL 94V-2)

Phosphor Bronze

-20°C to +70°C

-40°C to +85°C

3.8 gms

USE24340PD

83dB min. /30cm/DC 9V

4.0 ± 0.5KHz

DC 3 to 27V

9mA max. /DC 9V

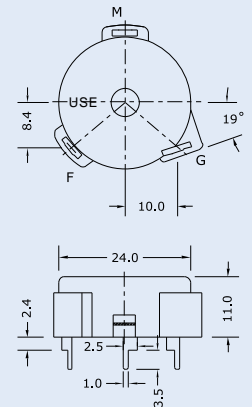
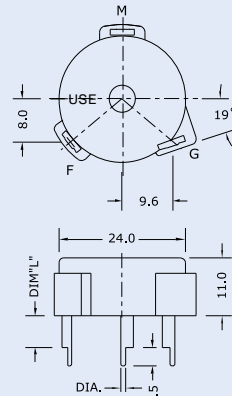
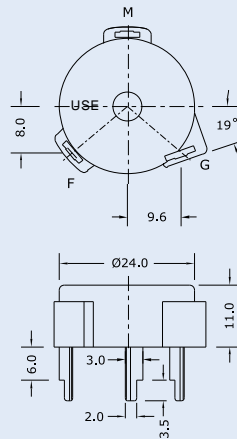
PC (UL 94V-2)

Phosphor Bronze

-20°C to +70°C

-40°C to +85°C

3.5 gms



Model No.	DIM "L"	PIN DIA.
PA	6.0	1.0
PB	12.0	1.0
PC	6.0	2.0

Dimensions (Unit: mm ± 0.5)

Sound Pressure Level
& Current Consumption
vs. Input Voltage

