

# PIEZO BUZZER (SELF DRIVE TYPE)



SOUND PRESSURE LEVEL

OSCILLATING FREQUENCY

ALLOWABLE INPUT VOLTAGE

CURRENT CONSUMPTION

CASE MATERIAL

LEAD PIN MATERIAL

LEAD WIRE

OPERATING TEMP. RANGE

STORAGE TEMP. RANGE

WEIGHT

## APPLICATIONS

- Clocks
- Office equipments, machine tools, toys, video games, etc.
- Automatic controlling devices, calculators.
- Home appliances equipments (microwave, oven, air conditioner, etc.)
- Smoke alarms.

### USE273

83dB min. /30cm/DC 9V

4.4 ± 0.5KHz

DC 3 to 27V

9mA max. /DC 9V

ABS (UL 94HB)

UL 1571 AWG32

85mm±5.0mm

-20°C to +60°C

-30°C to +70°C

4.5 gms

### USE27325

83dB min. /30cm/DC 9V

2.5 ± 0.5KHz

DC 3 to 27V

9mA max. /DC 9V

PC (UL94V-2)

Phosphor Bronze

UL 1571 AWG32

85mm±5.0mm

-20°C to +70°C

-40°C to +85°C

4.2 gms

### USE27326

83dB m in. /30cm/DC 9V

2.5 ± 0.5KHz

DC 3 to 27V

9mA max. /DC 9V

PC (UL94V-2)

Phosphor Bronze

UL 1571 AWG32

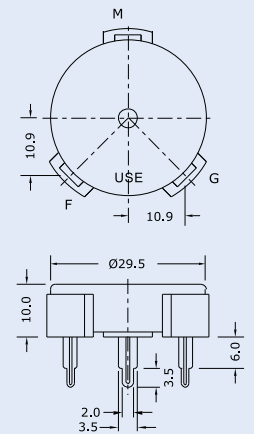
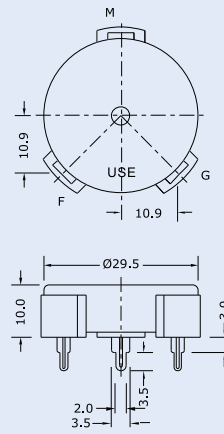
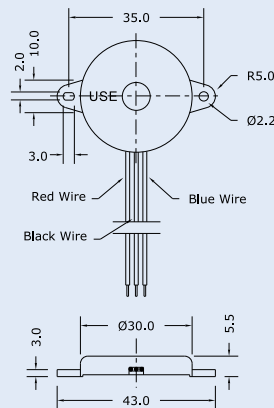
85mm±5.0mm

-20°C to +70°C

-40°C to +85°C

4.2 gms

Dimensions (Unit: mm ± 0.5)



Sound Pressure Level  
& Current Consumption  
vs. Input Voltage

