



Ultimate Wi-Fi Performance



BEAM
Advanced Beamforming



SmartConnect



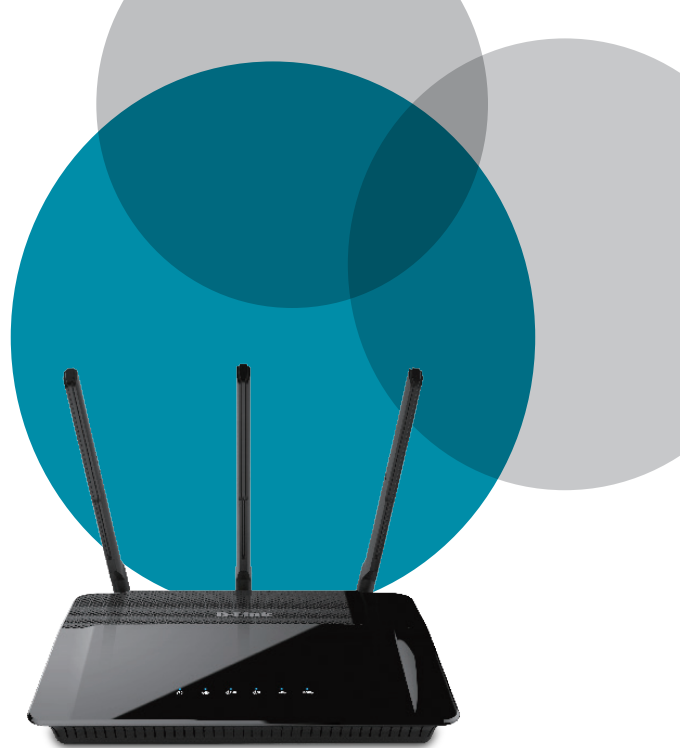
Smarter Bandwidth



Dual-Core Processor



Gigabit



DIR-880L

AC1900 Wi-Fi Router

Features

Connectivity

- Advanced Wireless AC beamforming dramatically enhances wireless signal strength and throughput
- 802.11 a/g/n/ac wireless LAN for a complete range of wireless compatibility
- Gigabit WAN and LAN ports for high-speed wired connections
- Two USB ports (one 3.0 and one 2.0) to connect storage drives and printers for sharing

mydlink® Cloud

- Remotely view and manage your network over the Internet
- mydlink Lite mobile app helps you access, manage and view your network remotely

QoS

- Tracks the type of network traffic (HD media streaming, web surfing, online gaming) and decide which applications deserves higher priority

Security

- WPA & WPA2 wireless encryption protects the network from intruders
- Wi-Fi Protected Setup (WPS) securely adds devices to your network at the push of a button

Overview

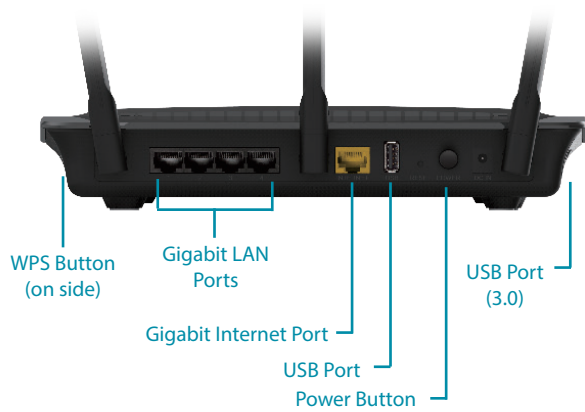
The DIR-880L AC1900 Wi-Fi Router lets you easily connect, control and monitor your network using the future of wireless technology, today. Advanced AC SmartBeam provides a significant increase in wireless performance, while Advanced Quality of Service (QoS) efficiently distributes bandwidth. The DIR-880L also comes with a dual-core processor and high-gain antennas. The DIR-880L is stylish, easy-to-use and comes IPv6-ready for a powerful network that you can rely on.

Reliable and Efficient

Using the latest wireless AC technology, which can provide transfer rates of up to 1.9 Gbps¹ (1300AC + 600N), the DIR-880L operates on both the 2.4 GHz and 5 GHz wireless bands at the same time using concurrent dual band technology and three external antennas. This allows you to browse the web, chat and email using the 2.4 GHz band, while simultaneously streaming digital media, playing online games or making Internet phone calls on the 5 GHz band. Advanced Quality of Service (QoS) prioritizes the most important data, such as movie streaming and online gaming. The DIR-880L with Smart Connect provides Band Steering Technology to prevent your network from being bottlenecked by devices. In other words, Smart Connect Technology will efficiently select the fastest Wi-Fi for every device.

Monitor Your Network Anytime

Control your network like never before. Using the new user interface, you can access and view your network no matter where you are. See who is connected to your router, change settings or block someone from using your network connection, all from any Internet connected PC, tablet or smart-phone.



Technical Specifications

General

Device Interfaces	<ul style="list-style-type: none"> • 802.11 a/g/n/ac wireless LAN • Four 10/100/1000 Gigabit LAN Ports 	<ul style="list-style-type: none"> • 10/100/1000 Gigabit WAN Port • Two USB ports (one USB 3.0, one USB 2.0)
Network Standards	<ul style="list-style-type: none"> • IEEE 802.11ac • IEEE 802.11n • IEEE 802.11g 	<ul style="list-style-type: none"> • IEEE 802.11a • IEEE 802.3 • IEEE 802.3u
Minimum System Requirements	<ul style="list-style-type: none"> • Windows® 8.1, Windows® 8, Windows® 7, or Mac OS® X (v10.7)⁴ • Ethernet Network Interface • Internet Explorer® 11, Mozilla® Firefox® v28, Google Chrome v33, or Safari v7 	<ul style="list-style-type: none"> • For optimal performance, pair the DIR-880L with an AC adapter • For internet access: Cable, DSL or Fiber Optics Internet connectivity

Functionality

Advanced Features	<ul style="list-style-type: none"> • SmartConnect • Guest Zone • Multi-language web setup wizard • Green Ethernet • DLNA media server support • Advanced AC SmartBeam 	<ul style="list-style-type: none"> • Bridge Mode • VPN Passthrough/Multi-session (PPTP/L2TP/IPsec) • Advanced QoS • VPN Server - L2TP over IPsec
mylink® SharePort Features	<ul style="list-style-type: none"> • Remote Access Mode: Access files through the Internet • Local Access Mode: Access files from any device connected to the DIR-880L • SharePort Web File Access support (web browser) • Accepts USB storage drives up to 250 GB 	
mylink Features	<ul style="list-style-type: none"> • Remote Management • View current upload/download bandwidth • View currently connected clients • View web browsing history per client 	<ul style="list-style-type: none"> • Block/unblock client network access • Manage wireless network details • Accessible through a web browser or iOS or Android mobile
Mobile App Support	<ul style="list-style-type: none"> • mylink lite • mylink SharePort 	<ul style="list-style-type: none"> • QRS Mobile v1.5 • Apps support iPhone®, iPad®, iPod Touch®, and Android™ devices
Wireless Security	<ul style="list-style-type: none"> • WPA & WPA2 (Wi-Fi Protected Access) 	<ul style="list-style-type: none"> • Wi-Fi Protected Setup (WPS) PIN/PBC
Advanced Firewall Features	<ul style="list-style-type: none"> • SPI (Stateful Packet Inspection) 	<ul style="list-style-type: none"> • NAT (Network Address Translation)

For more information

U.S.A. | 17595 Mt. Herrmann Street | Fountain Valley, CA 92708 | 800.326.1688 | dlink.com

Specifications are subject to change without notice. D-Link is a registered trademark of D-Link Corporation and its overseas subsidiaries. All other trademarks belong to their respective owners. ©2014 D-Link Corporation. All rights reserved.

Updated May 1, 2015



Technical Specifications Continued

Physical

Dimensions	• 9.72 x 7.5 x 1.86 inches	
Weight	• Item: 1.5 lbs	• Box: 1.62 lbs
Power	• Input: 100 to 240 V AC, 50/60 Hz	• Output: 12 V DC, 3A
Temperature	• Operating: 32 to 104 °F	• Storage: -4 to 149 °F
Humidity	• Operating: 0% to 90% non-condensing	• Storage: 5% to 95% non-condensing
Certifications	• FCC • Wi-Fi Certified	• IC • CE

Package Contents

What's Inside	<ul style="list-style-type: none"> • AC1900 Wi-Fi Router • Quick Installation Guide and warranty documents² • Power Adapter • Ethernet Cable • Wi-Fi Configuration Card • Three detachable antennas
---------------	--

Warranty

Warranty	• 1-Year Limited Warranty ³
----------	--

Order Information

<i>Part Number</i>	<i>Description</i>
--------------------	--------------------

¹ Maximum wireless signal rate derived from IEEE standard 802.11ac specifications which are subject to change. Actual data throughput will vary. Network conditions and environmental factors, including volume of network traffic, building materials and construction, and network overhead, lower actual data throughput rate. Environmental factors will adversely affect wireless signal range.

² Latest software and documentation are available at <http://support.dlink.com>.

³ 1-Year Limited Warranty available only in the USA.

For more information

U.S.A. | 17595 Mt. Herrmann Street | Fountain Valley, CA 92708 | 800.326.1688 | dlink.com

Specifications are subject to change without notice. D-Link is a registered trademark of D-Link Corporation and its overseas subsidiaries. All other trademarks belong to their respective owners. ©2014 D-Link Corporation. All rights reserved.

Updated May 1, 2015

