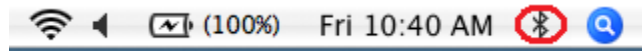
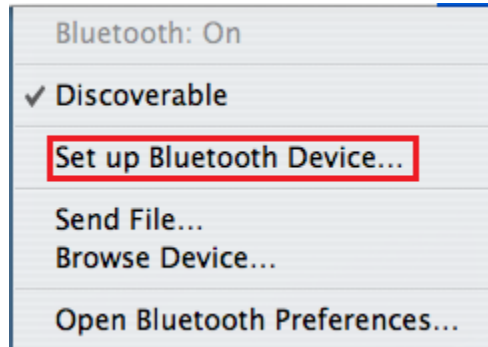


BT-335 Bluetooth SetUp

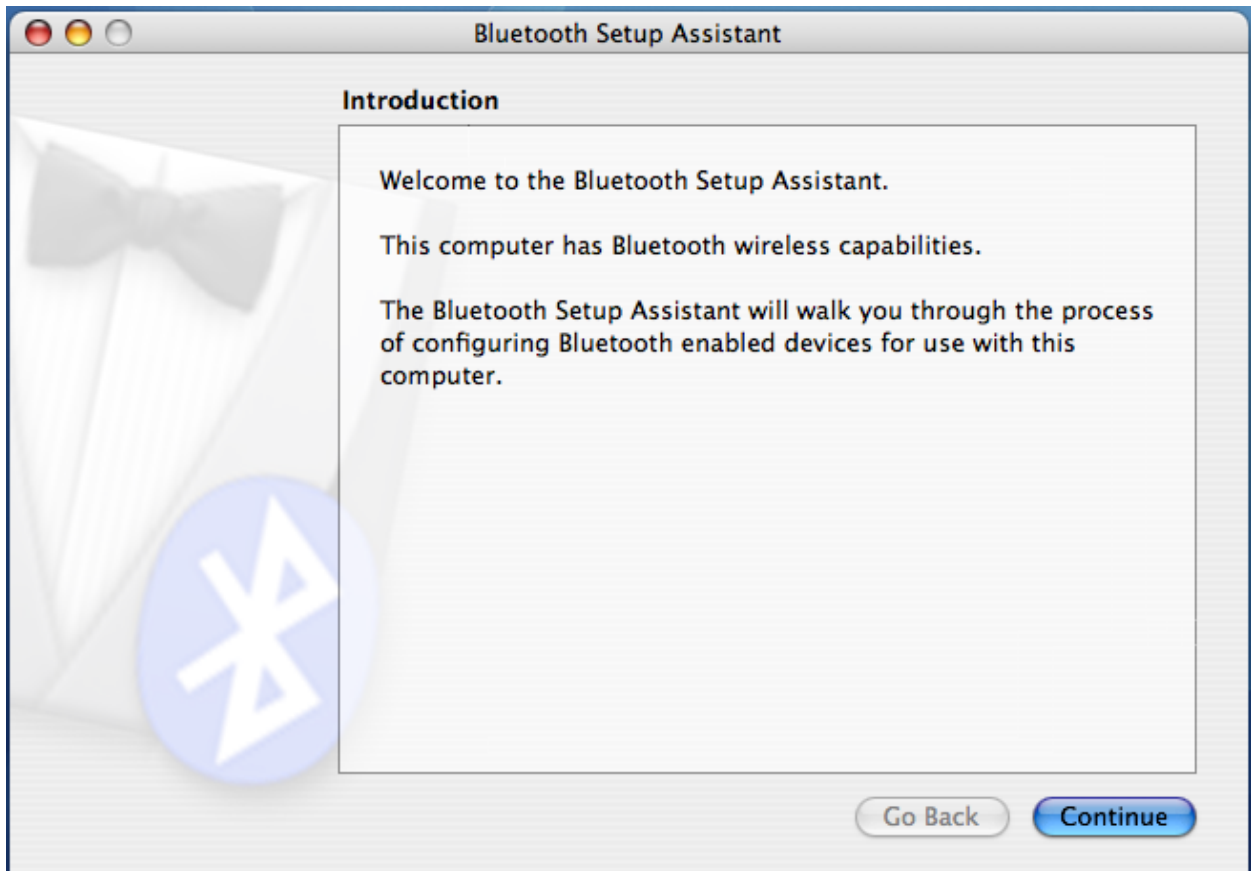
Make sure your Bluetooth function is enabled.



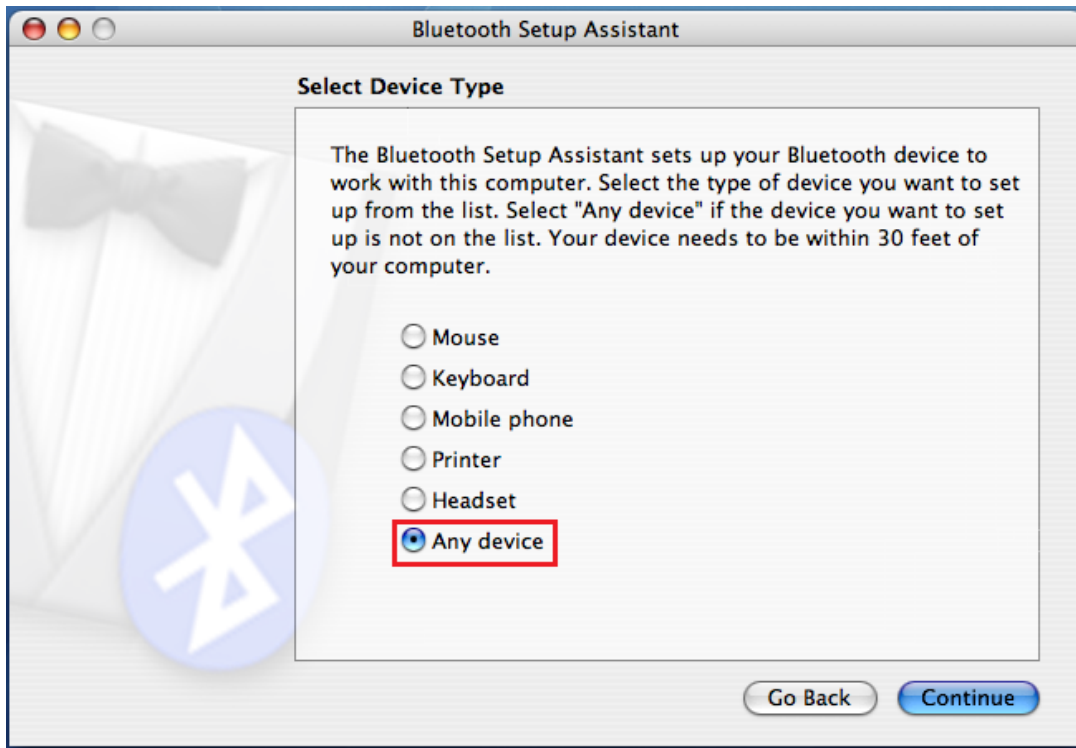
Click on the icon and select **Set up Bluetooth Device...**



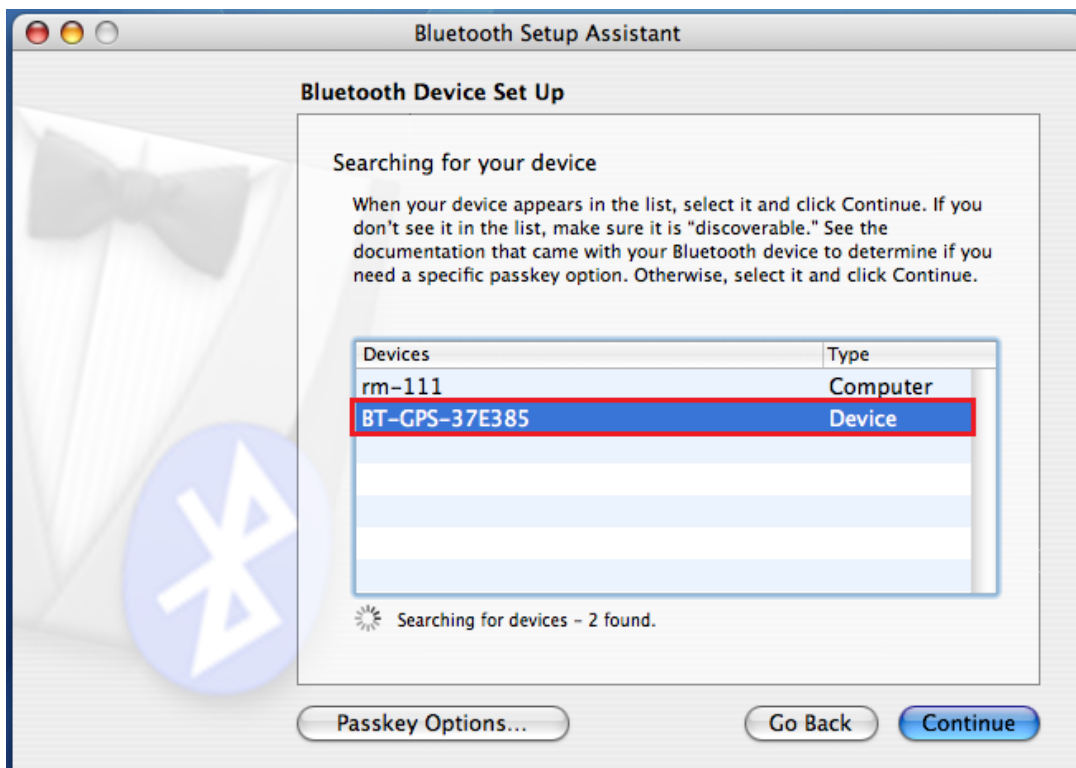
The **Bluetooth Setup Assistant** window will pop-up. Press the **Continue** button.



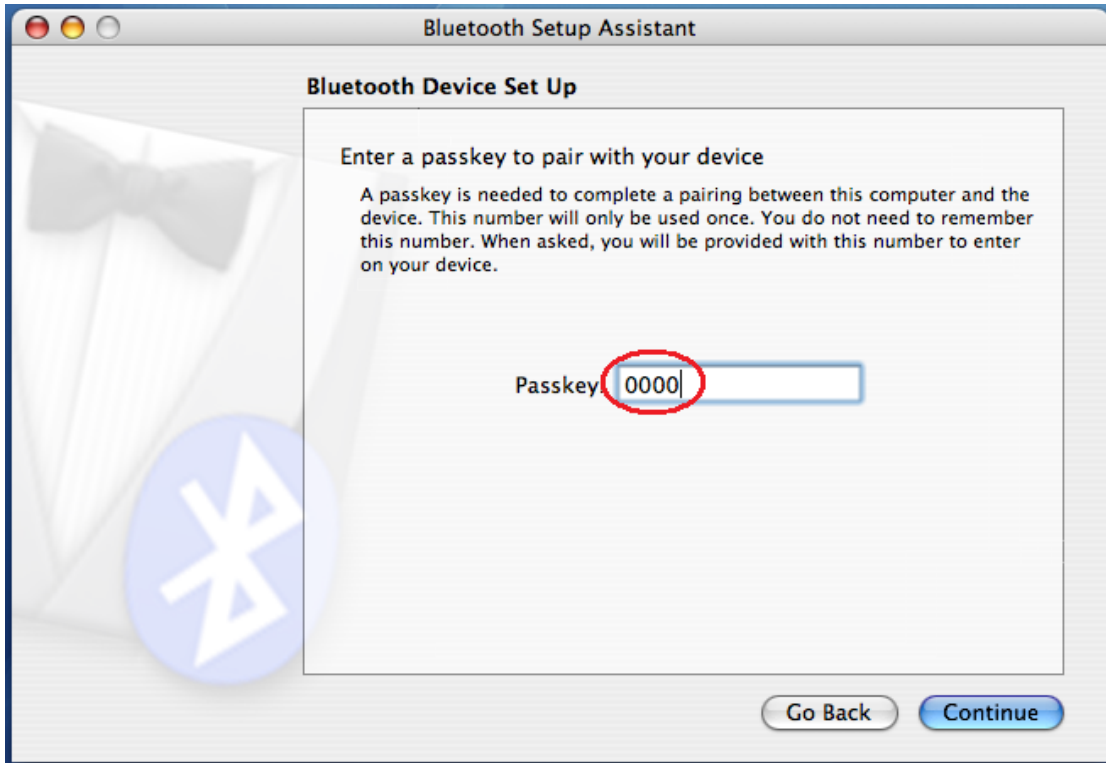
Choose **Any Device** under **Device Type** and click **Continue**.



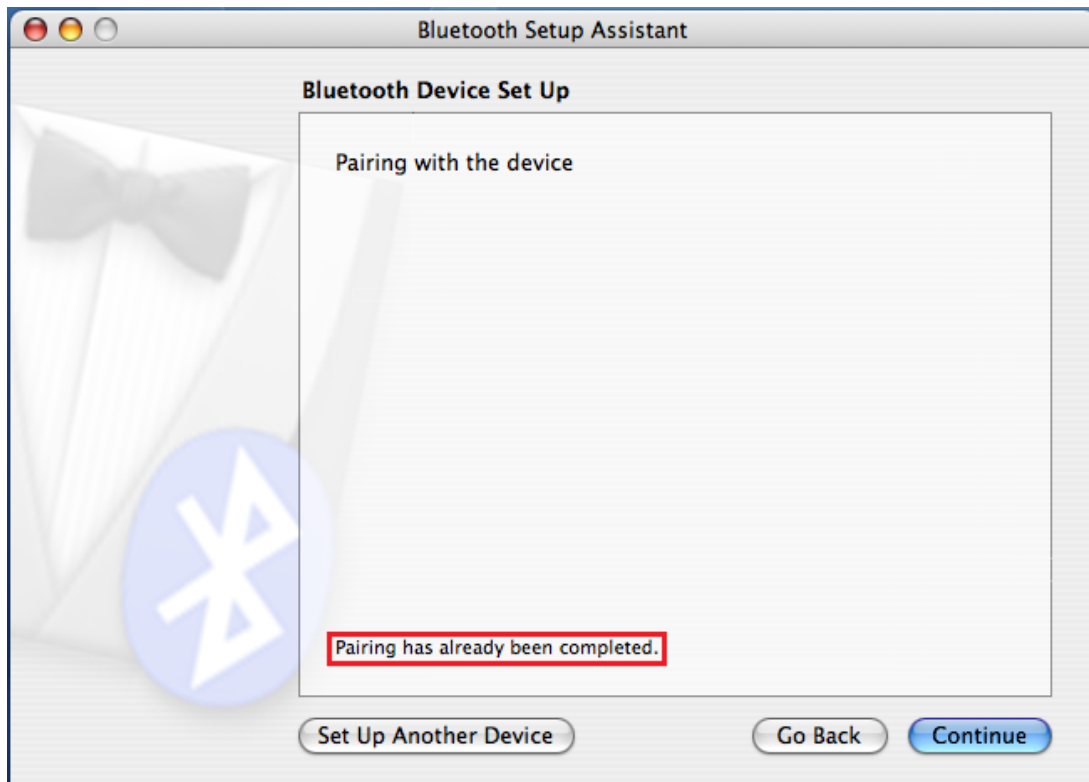
Under **Devices**, select your bluetooth device. The format is **BT-GPS-XXXXXX**. This is the address of your device. Press **Continue**.



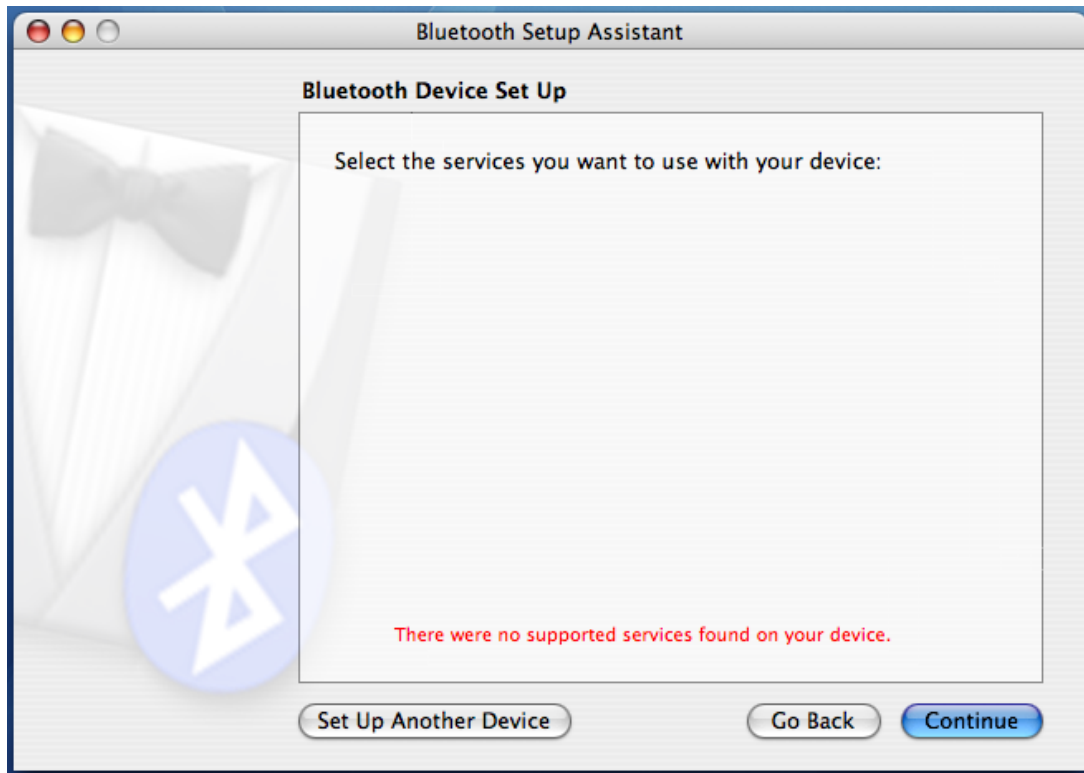
Next, it will ask for the **Passkey**. Input this code: **0000**. Click the **Continue** button.



Wait until you confirmed that the pairing process has been completed and press **Continue**.



Move forward and click **Continue**.



Your Bluetooth device is now ready for use. Press the **Continue** button to exit the setup process.

