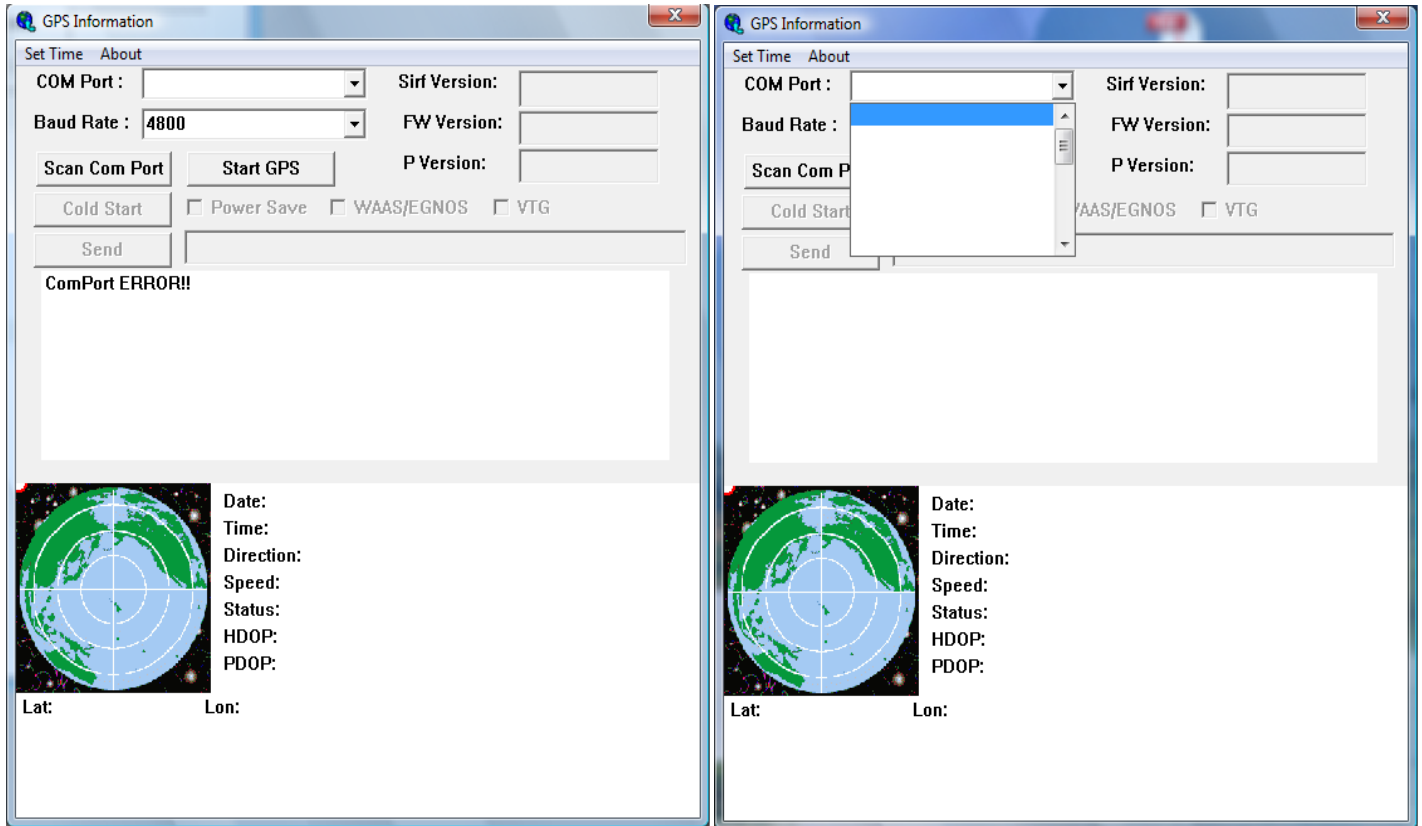


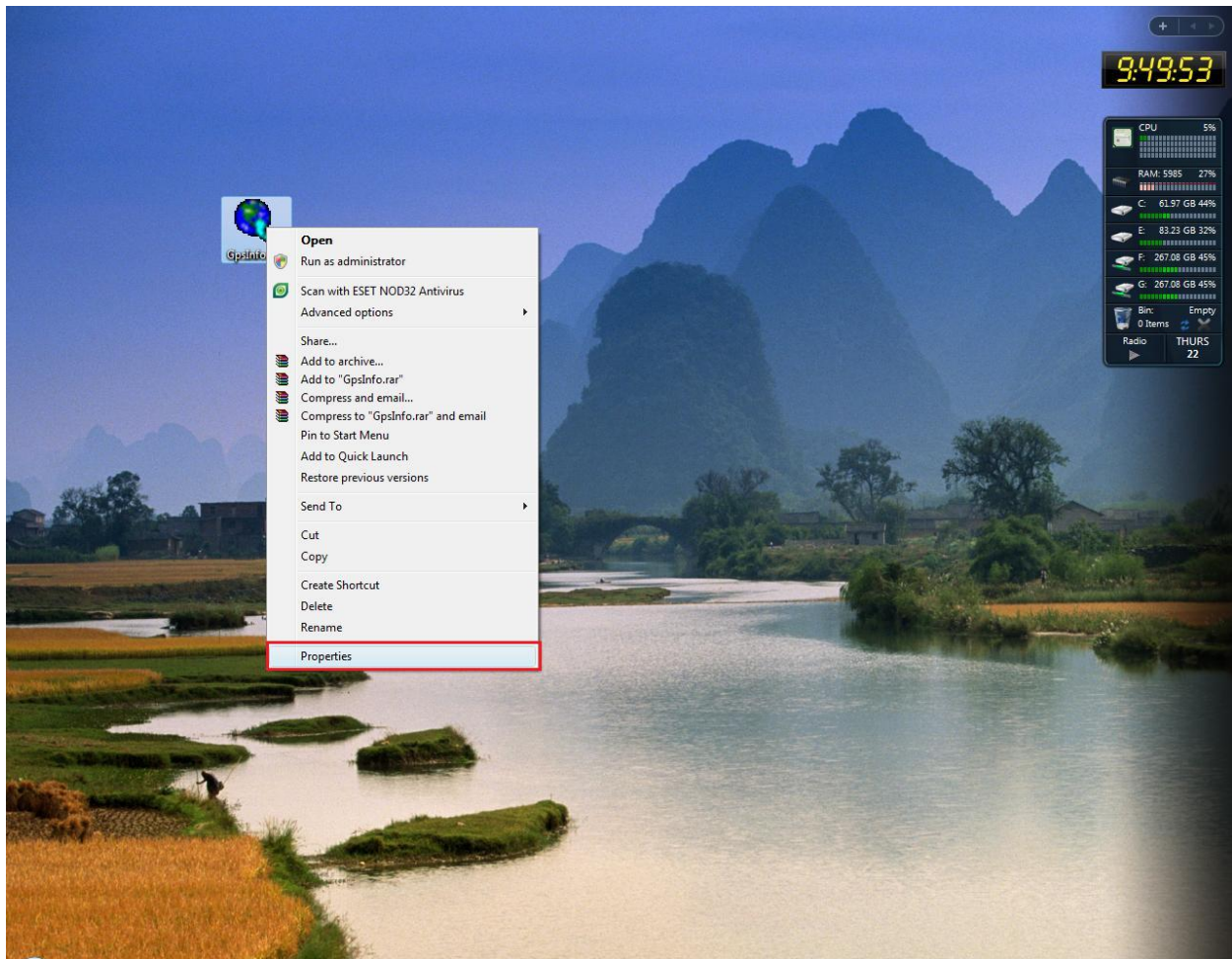
GPSInfo Note for Windows 7/Vista

If your GPSInfo looks like the GPSInfo below, with the blank COM ports, then please follow the instructions below to get GPSInfo running properly.



GPSInfo Note for Windows 7/Vista

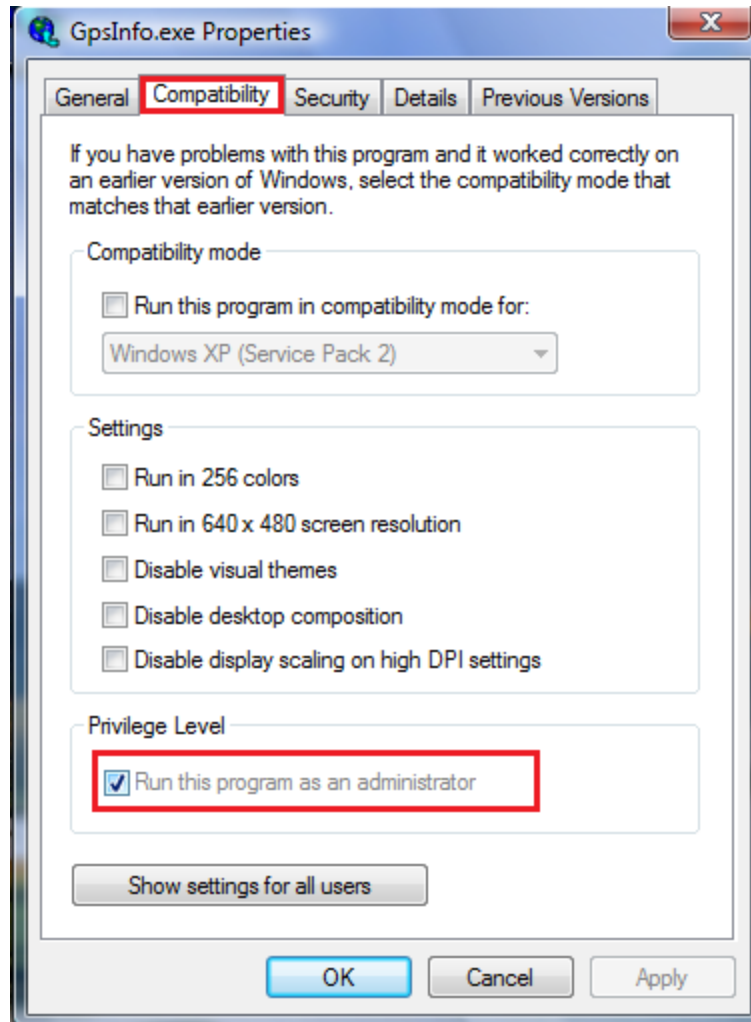
1. Right click on the GPSInfo Icon on your Desktop



2. Click on Properties.

GPSInfo Note for Windows 7/Vista

3. Click on the Compatibility Tab.
4. Check the box that says "Run this program as an administrator".



5. Click OK and reopen GPSInfo.

GPSInfo Note for Windows 7/Vista

6. Select the COM port and Baud Rate 4800.
7. Click Start GPS

