

URC Utility Relay Company

AC-PRO-II®

MICRO-CONTROLLER BASED TRIP UNIT

The AC-PRO-II® is 55% smaller & includes more features than its predecessor. In addition to standard functions of Long-Time, Short-Time, Instantaneous and Ground Fault

The AC-PRO-II® includes:

- ☐ Neutral overload
- ☐ Under-voltage alarm/trip
- ☐ Over-voltage alarm/trip
- ☐ Time stamping of events
- ☐ Patented Sluggish Breaker® detection
- ☐ Wave form capture
- ☐ Configurable alarm relay



Completely Backwards Compatible

The CTs, actuators, and wiring harness from the original AC-PRO® can be used with the AC-PRO-II®.

Communications

RS485 Modbus RTU communications is standard.

Programming

Settings are programmed using the OLED multi-line display and “smart” buttons that change their function according to the information displayed. All of the settings are entered using simple parameters (no percentages or multipliers required).

OLED Multi-Line Display

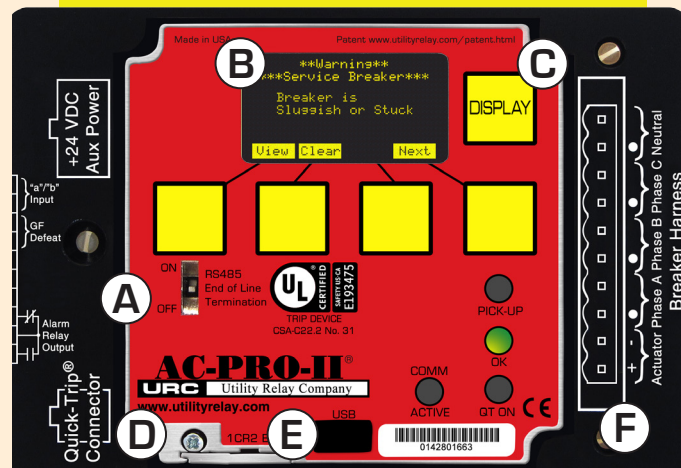
The easy to read multi-line display provides real time monitoring of 3-phase, neutral, and ground fault currents. The display portion can be rotated to allow the trip unit to fit in a variety of different breaker configurations.

Last Trip Data

The trip units retain all of the trip data for the last 8 trip events. This data includes the time and date, trip type, currents & waveforms of each event.

USB Port

The electrically isolated front mounted USB port allows for easy access of trip data and protection settings. It can be used to upload/download the trip unit settings, making commissioning the trip unit much faster.



- A RS485 MODBUS RTU COMMUNICATIONS IS STANDARD**
- B EASY TO READ OLED MULTI-LINE DISPLAY**
- C DISPLAY CAN BE ROTATED FOR VARIOUS INSTALLATION OPTIONS**
- D QUICK-TRIP® ARC FLASH REDUCTION READY**
- E ELECTRICALLY ISOLATED USB CONNECTOR**
- F THE ORIGINAL AC-PRO® ACTUATOR & HARNESS CONNECTION**

Self-Test OK Feature

The green LED indicates that the trip unit is operating properly. This feature:

- ☐ Continuously monitors the trip unit
- ☐ Verifies that the actuator is connected
- ☐ Monitors the software routines
- ☐ Monitors the micro-controller

50 Hz or 60 Hz Operation

The AC-PRO-II® is user selectable for 50 Hz or 60 Hz applications.

Construction

- ☐ Conformal coated circuit boards
- ☐ Contamination resistant membrane keypad
- ☐ All metal, nickel-plated enclosure

Warranty

All AC-PRO-II®s come with a 2-year limited warranty.

REV 3.6.17

888.289.2864 | UTILITYRELAY.COM | URCSALES@UTILITYRELAY.COM



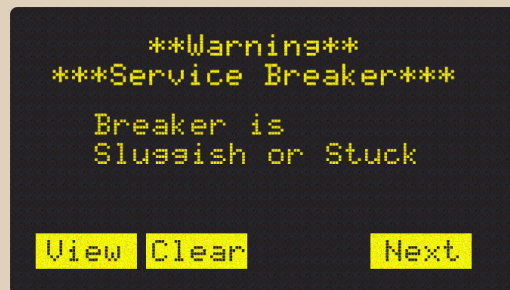
Voltage, Power, and Energy Data

Whenever voltage and power data is necessary, a Voltage Divider Module (VDM) can be attached to the back of the AC-PRO-II® trip unit. The following VDM data is available on the display and through RS485 Modbus RTU communications.

- ☐ Voltages
- ☐ KW
- ☐ KVA
- ☐ KWHr & KVAHr
- ☐ Power Factor

Sluggish Breaker® Detection

The patented Sluggish Breaker® detection captures the mechanism time of every trip including the “first trip” and determines if a breaker mechanism is in need of service. Capturing the mechanism time of the first operation is crucial since later operations are faster because the breaker mechanism was exercised. If a mechanism’s operating time is excessive, the AC-PRO-II® will alarm, indicating maintenance is required.



QUICK-TRIP®

The AC-PRO-II® is a manually controlled QUICK-TRIP® arc flash reduction system. When turned on it can reduce trip times, and when turned off allows selective coordination between circuit breakers.

A QT2-Switch or QT-Display-II™ is required to control the QUICK-TRIP® operation.

SAFE-T-TRIP®

The handheld SAFE-T-TRIP® device allows an operator to safely trip a breaker without standing directly in front of the switchgear. When needed, the SAFE-T-TRIP® plugs into the USB port on the front of the AC-PRO-II®, or QT-Display-II™.

SAFE-T-TRIP® helps capture the “first trip” for Sluggish Breaker® detection by tripping the breaker prior to removing the breaker from the cubicle.



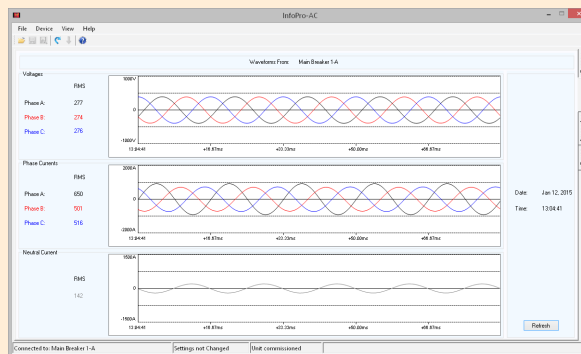
InfoPro-AC Software

The InfoPro-AC is a graphical user interface application available free of charge for easy interface between a computer and the AC-PRO-II®.

The computer connects to the USB connector on the front of the AC-PRO-II.

InfoPro-AC includes the following features:

- ☐ AC-PRO-II® Settings (Upload & Download)
- ☐ Waveforms on demand
- ☐ Current, voltage, & power readings on demand
- ☐ Data on the last 8 trips including the waveforms
- ☐ Save Trip data, settings, and waveforms for later use



888.289.2864 | UTILITYRELAY.COM | URCSALES@UTILITYRELAY.COM

