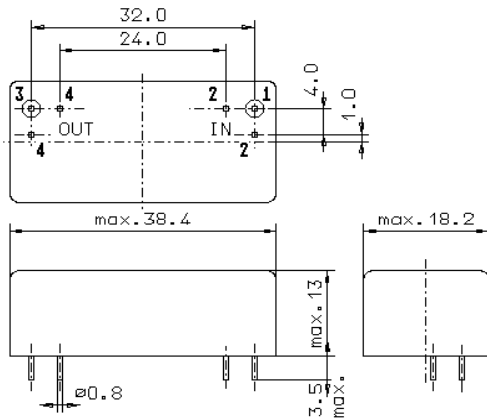


Specification for monolithic crystal filter:

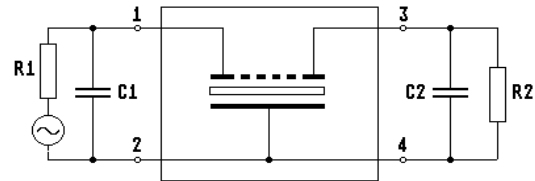
MQF 10.0-0320/09

1. General

1.1. Package:



GM17



- | | |
|-----------------------------------|------------------|
| 1.2. Type name: | MQF 10.0-0320/09 |
| 1.3. Number of poles: | 4 |
| 1.4. Operating temperature range: | -40°C to +85°C |
| 1.5. Storage temperature range: | -45°C to +85°C |

2. **Electric values**

- | | |
|---|---|
| 2.1. Nominal centre frequency fo: | 10.0 MHz |
| 2.2. Pass band | |
| 2.2.1. Bandwidth between 6 dB - frequencies: | $\geq f_o \pm 1.6$ kHz |
| 2.2.2. Ripple: | ≤ 2.0 dB at $f_o \pm 1.2$ kHz |
| 2.2.3. Insertion loss:
(measured on smallest attenuation in pass band) | ≤ 2.5 dB |
| 2.3. Stop band | |
| 2.3.1. $f_o \pm 10$ kHz | ≥ 33 dB |
| 2.3.2. Alternate attenuation | ≥ 40 dB |
| 2.4. Terminating impedance (input and output): | 50 // 0 pF |
| 2.5. Continuous input level: | 0 dBm |
| 2.6. Maximum input level: | + 14 dBm |
| 3. Marking: | manufacturer, date code
MQF 10.0-0320/09 |
| 4. Environment conditions: | Corresponding to Vectron CF001 |

Edited by: _____ date: _____ name: _____