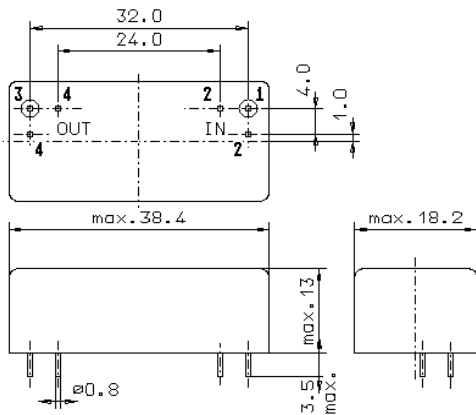


Specification for monolithic crystal filter:

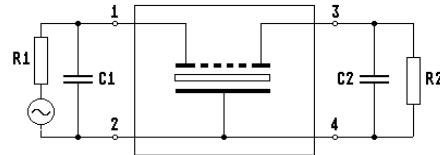
MQF 8.403512-0625/05

1. General

1.1. Package:



GM17



- | | |
|--|---|
| 1.2. Type name: | MQF 8.403512-0625/05 |
| 1.3. Number of poles: | 10 |
| 1.4. Operating temperature range (OTR): | -40°C to +85°C |
| 1.5. Storage temperature range: | -55°C to +105°C |
| 2. Electric values | |
| 2.1. Nominal centre frequency fo: | 8.403512 MHz |
| 2.2. Pass band | |
| 2.2.1. Centre frequency fc at +25°C: | 8.403512 MHz ± 150 Hz |
| 2.2.2. Centre frequency change in OTR: | < 8.0 ppm |
| 2.2.3. Bandwidth between 2.5 dB - frequencies: | > fc - 3.162 kHz / fc + 3.088 kHz |
| 2.2.4. Bandwidth between 1.0 dB - frequencies: | > fc - 2.90 kHz / fc + 2.488 kHz |
| 2.2.5. Ripple: | < 1.0 dB within fc - 2.90 kHz..... fc + 2.488 kHz |
| 2.2.6. Group delay variation for any 100 Hz increment: | < 100 µs within fc ± 2.80 kHz |
| 2.2.7. Insertion loss: | < 4.5 dB |
| (measured on smallest attenuation in pass band) | |
| 2.3. Stop band | |
| 2.3.1. fo - 3.5120 kHz: | > 10 dB |
| 2.3.2. fo ± 5.50 kHz | > 60 dB |
| 2.3.3. fo - 11.762 kHz / fo + 8.238 kHz: | > 70 dB |
| 2.3.4. Guaranteed attenuation (DC.....fo-12kHz
and fo + 12 kHz.....180 MHz) | > 80 dB |
| 2.3.5. Spurious responses (fo +50 kHz.....500 kHz): | > 80 dB |
| 2.4. Terminating impedance (input and output): | 50 Ω // 0 pF |
| 2.5. Maximum input power level: | +10 dBm / +20 dBm (working / non-damaged) |
| 2.6. 3 rd order in band intermodulation distortion: | < 48 dB (at least 48 dB down from either of the
- test tones frequencies: 8.4033MHz /8.4043MHz
- test tone power level: - 30 dBm
two -30 dBm test tones) |
| 3. Marking: | manufacturer, date code
MQF 8.403512-0625/05 |
| 4. Environment conditions: | Corresponding to Vectron MIL standard |