

Section	430
Page	430.2
Issue	Q

VIKING GENERAL PURPOSE ASPHALT PUMPS SERIES 34 & 32E

See also Viking Heavy Duty Asphalt Pumps on pages 430.6 to 430.16 (Series 224A/4224A, 324A/4324A, 124E, 324E)

Electrically Heated Pumps (Series 32E)

The 32E series pumps are similar to Viking's 34 Series Packed-Gland Jacketed Asphalt pumps, except instead of jacketing, they offer electric heat cartridges to enable heating without the need for piping steam or hot oil to the pump. The electrically heated pump is designed to melt the asphalt within the pump to a liquid state prior to startup. Heat cartridges located on the head, and in some sizes the casing, provide sufficient heat to melt the liquid within the pump and at the stuffing box.

The pump user may provide their own temperature control system, or Viking Pump offers a controller for its electrically heated pumps. It is a closed loop PID control providing fast, yet effective time to temperature with minimal overshoot to prevent overheating. The control system includes a thermocouple and thermowell adapter for mounting to the pump and a controller which powers all the heat cartridges on one pump (N-size requires a separate 40-amp relay). The controller has a user adjustable temperature set point, up to a preset maximum. When the set point is reached, a relay can be wired to alert the operator, or prevent a pump from being started until the asphalt is melted. It can be ordered with pre-set maximum temperature of either 150°F, 250°F, 350°F or 450°F; or 65°C, 120°C, 175°C or 230°C. See specifications below for number of cartridge heaters and wattages by pump size.

Electric Heat Specifications

Heat cartridges (pre-installed on pump)

All heaters are 240 VAC, 1 phase, 50/60 Hz

Pump Size	Head Cartridges	Watts/ Cartridge (Head)	Casing Cartridges	Watts/ Cartridge (Casing)	Total Watts
LQ32E	2	350	2	250	1200
Q32E	3	500	0	-	1500
M32E	3	450	2	450	2250
N32E	2	900	2	350	2500

Materials:

Incoloy® outer sheath, PFA moisture seal, Brass NPT fitting

Leads:

Two - fiberglass-insulated leads rated to 842°F/450°C for temperature resistance (H-QS sizes, 36" lead length) (N size, 72" lead length) in flexible stainless steel hose for abrasion resistance. Two leads extend 12" past end of SS hose. Normal practice is to wire all cartridges to local junction box at pump, with one cable to controller.

Agency Approvals:

UL, CSA, VDE, CE

Control System (accessory not included with pump)

Thermocouple:

Type J thermocouple with thermowell in weather-resistant housing with ½" MNPT fitting to mount in pump.

Controller Specifications:

Enclosure:

1/16 DIN, NEMA 4X / IP66 for panel mount

Mains power:

240 VAC, 1 phase

Heater Output:

15A NO-ARC, Form A

Control Algorithm:

PID, with pre-set bandwidths

Set point Achieved Relay Output:

Mechanical relay, 5A, Form A

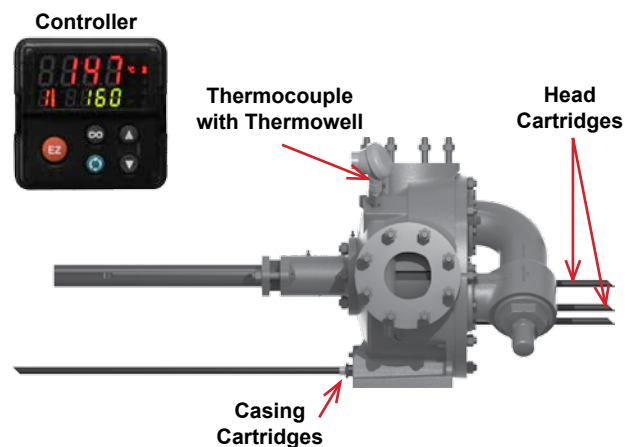
Agency Approvals:

UL, CSA, CE, RoHS, W.E.E.E., FM

N-size pump requires a separate 40-amp relay, available from Viking.

WARNING: Use National Electric Code (NEC) or other country-specific standard wiring and safety practices when wiring and connecting this controller to a power source and to electrical sensors, heaters or peripheral devices. Failure to do so may result in damage to the equipment and property, and/or injury or loss of life.

Electrically heated pumps should always be insulated, and if possible, use spacers between the pump foot and baseplate to minimize heat loss. Approximate time to temperature is 3 hours for a 300 degree temperature rise.



VIKING GENERAL PURPOSE ASPHALT PUMPS SERIES 34 & 32E

See also Viking Heavy Duty Asphalt Pumps on pages 430.6 to 430.16 (Series 224A/4224A, 324A/4324A, 124E, 324E)

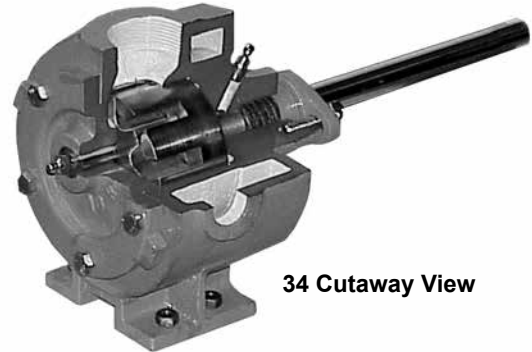
Section	430
Page	430.3
Issue	Q

Pressure Relief Valves

Series 34 pumps feature a jacketed head without relief valve standard. A jacketed relief valve can be furnished on a non-jacketed head on LQ through N sizes.

Series 32E pumps feature a non-jacketed relief valve standard. The heat cartridges in the head supply sufficient heat to melt asphalt in the relief valve as long as the pump is insulated. A plain head option is available.

All positive displacement pumps should have some form of pressure relief, whether in the pump or downstream of the pump, to prevent overpressure situations.



34 Cutaway View

Materials of Construction - Series 34 & 32E

Pump Construction	Casing	Head	Rotor	Idler	Rotor Shaft	Idler Pin	Bushings	Shaft Seal	Internal Relief Valve (optional on 34, standard on 32E)
								Packed	
Standard Construction	Iron	Iron	Iron	Iron	Steel	Hardened Steel	Bronze	Standard	Iron
Steel Fitted	Iron	Iron	Steel	① Iron	Steel	Hardened Steel	Bronze	Standard	Iron

Specifications - Unmounted Pumps

Jacketed Models	Electric Heat Models	Port Size	Nominal Pump Rating			Maximum Recommended Discharge Pressure for 100 SSU and Above		③ Maximum Recommended Temperature for Cataloged Pump		Steel Fitted Construction Recommended Above This Viscosity		Maximum Hydrostatic Pressure		Approximate Shipping Weight (Pump Only)	
④ LQ34	LQ32E	② 2½	90	20	420	100	6.9	450	232	25,000	5500	400	27.6	180	82
Q34	Q32E	② 3	200	45	350	75	5.2	450	232	7,500	1650	400	27.6	350	160
M34	M32E	② 4	280	64	280	75	5.2	450	232	25,000	5500	400	27.6	530	240
N34	N32E	② 5	450	102	280	75	5.2	450	232	2,500	550	400	27.6	750	340

Specifications - Pump Jacketing

Model Number	Maximum Temperature/Pressure Of Fluid in Jackets							
	Steam (Saturated)				Heat Transfer Oil			
	Temperature		Pressure		Temperature		Pressure	
	Packed	°F	°C	PSIG	Bar	°F	°C	PSIG
④ LQ34	365	185	150	10.4	450	232	150	10.4
Q34	365	185	150	10.4	450	232	150	10.4
M34	365	185	150	10.4	450	232	150	10.4
N34	365	185	150	10.4	450	232	150	10.4

① "Q" Size has steel idler when steel fitted construction is required.

② Ports are suitable for use with 125# ANSI cast or ductile iron or 150# ANSI steel companion flanged fittings. All other tapped for standard pipe (NPT).

③ For use at higher temperatures, consult factory for recommended materials of construction.

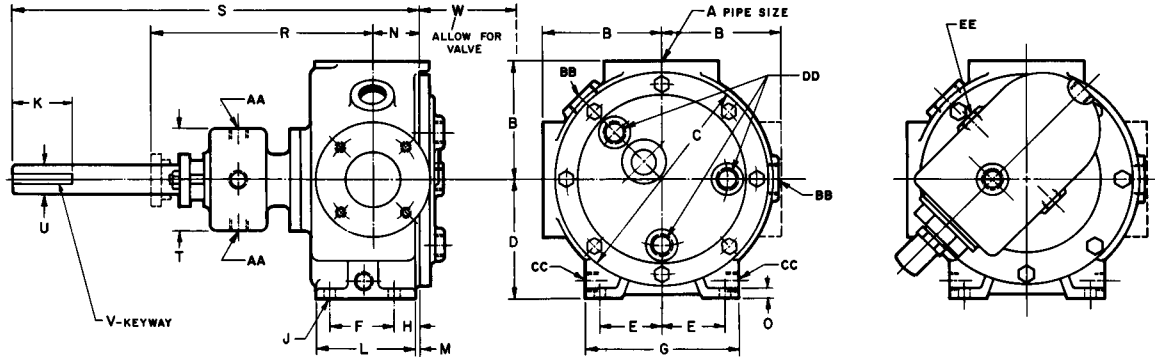
④ "LQ" size has two-piece jacketed head construction

Section	430
Page	430.4
Issue	Q

VIKING GENERAL PURPOSE ASPHALT PUMPS SERIES 34 & 32E

See also Viking Heavy Duty Asphalt Pumps on pages 430.6 to 430.16 (Series 224A/4224A, 324A/4324A, 124E, 324E)

Dimensions LQ - Q - M - N 34 (Unmounted Pumps)



Jacketed Head Standard

Optional Jacketed Relief Valve Shown

MODEL NO.		A	B	C	D	E	F	G	H	J	K	L	M	N	O	② R	S	T	U	V	W	JACKET CONNECTIONS (N.P.T.)				
																						AA	BB	CC	DD	EE
LQ34	in	①	7.19	10.25	6.00	2.88	3.00	7.00	1.00	.47	3.00	4.62	.12	1.75	.62	11.62	21.25	5.50	1.44	.38 x .19	7.88	3/4	1 1/2	3/4	③ 1	1
	mm	2 1/2	183	260	152	73	76	178	25	12	76	117	3	44	16	295	540	140	37	200						
Q34	in	①	8.00	14.00	7.75	4.12	4.25	10.00	1.62	.75	5.00	6.50	.25	3.00	.62	13.88	33.50	6.75	1.94	.50 x .25	10.62	3/4	1 1/2	1	1 1/4	1
	mm	3	203	356	197	105	108	254	41	19	127	165	6	76	16	353	851	171	49	270						
M34	in	①	9.50	17.25	9.50	5.00	6.25	12.00	1.44	.75	5.00	8.69	.19	4.00	.75	13.38	34.00	6.75	1.94	.50 x .25	10.25	3/4	1 1/2	1	1 1/2	1
	mm	4	241	438	241	127	159	305	37	19	127	221	5	102	19	340	864	171	49	260						
N34	in	①	9.50	17.25	9.50	5.00	6.25	12.00	1.62	.75	5.00	8.50	.19	4.50	.75	18.12	34.00	8.50	2.44	.62 x .31	10.25	3/4	2	1 1/2	1 1/2	1
	mm	5	241	438	241	127	159	305	41	19	127	216	5	114	19	460	864	216	62	260						

① Ports are suitable for use with 125# ANSI cast iron flanges or 150# steel or ductile iron companion flanges or flanged fittings. All others are tapped for standard pipe (NPT).

② Minimum dimension for repacking.

③ LQ 34 heads have two jacket openings only (near vertical centerline). "Q", "M", and "N" head jacket opening per drawing.

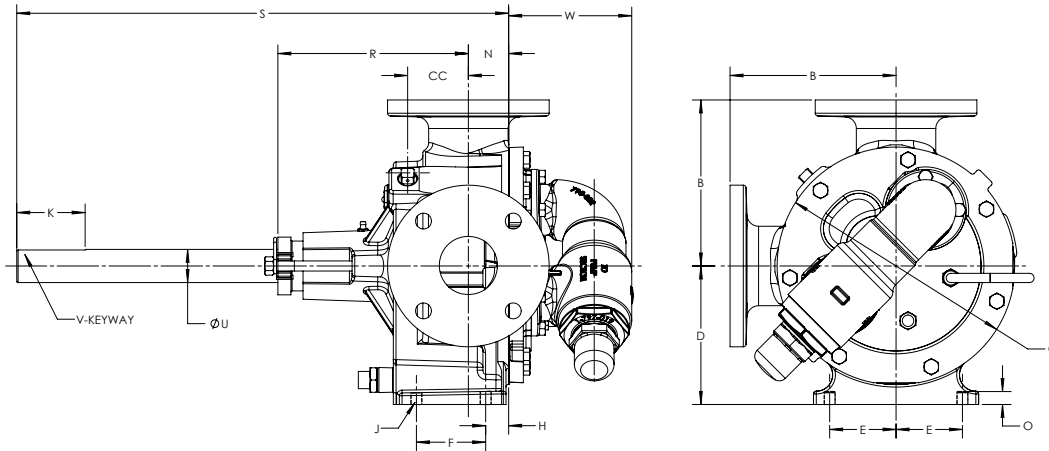
④ "LQ" size has two-piece jacketed head construction

VIKING GENERAL PURPOSE ASPHALT PUMPS SERIES 34 & 32E

See also Viking Heavy Duty Asphalt Pumps on pages 430.6 to 430.16 (Series 224A/4224A, 324A/4324A, 124E, 324E)

Section	430
Page	430.5
Issue	Q

Dimensions LQ - Q - M - N 32E (Unmounted Pumps)



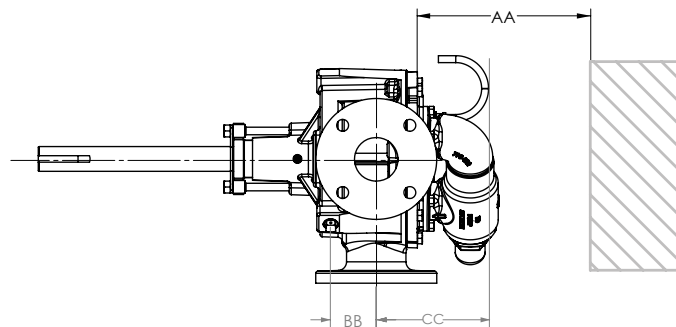
MODEL NO.		① A	B	C	CC	D	E	F	H	J	K	N	O	② R	S	U	V	W
LQ32E	in	2½	7.19	10.25	2.63	6.00	2.88	3.00	1.00	.47	3.00	1.75	.50	9.88	21.25	1.44	.375 x .19	5.38
	mm		183	260	67	152	73	76	25	12	76	44	13	251	552	37		137
Q32E	in	3	7.75	14.00	3	7.75	4.13	4.25	1.63	.69	5.00	3.00	.63	13.88	33.50	1.94	.50 x .25	8.19
	mm		197	356	76	197	105	108	41	18	127	76	16	353	851	49		208
M32E	in	4	9.50	17.25	2.75	9.50	5.00	6.25	1.44	.69	5.00	4.00	.75	13.38	34.00	1.94	.50 x .25	8.5
	mm		241	438	70	241	127	159	37	18	127	102	19	340	864	49		216
N32E	in	5	9.50	17.25	5.25	9.50	5.00	6.25	1.63	.69	5.00	4.50	1	20.88	34.00	2.44	.625 x .3125	8.25
	mm		241	438	133	241	127	159	41	18	127	114	25	530	864	62		216

① Ports are suitable for use with 125# ANSI cast iron flanges or 150# steel or ductile iron companion flanges or flanged fittings.

② Minimum dimension for repacking.

③ LQ 34 heads have two jacket openings only, (near vertical centerline). "Q", "M", and "N" head jacket opening per drawing.

Dimensions LQ - Q - M - N 32E (Electrically Heated – Non Jacketed)



HEAT CARTRIDGE LOCATIONS:

Model	Temp Probe to Port Center Line (BB)		Head Heater to Port Center Line (CC)		Required to Remove Heater (AA)	
	Inch	mm	Inch	mm	Inch	mm
LQ32E	2.54	64.5	5.75	146.1	7.00	177.8
Q32E	2.85	72.4	8.25	209.6	9.25	234.95
M32E	2.64	67.1	8.25	209.6	9.25	234.95
N32E	5.05	128.2	8.25	209.6	9.25	234.95

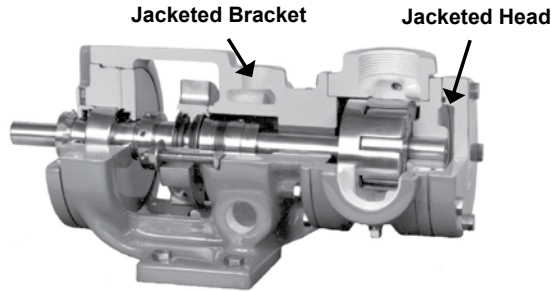
Section	430
Page	430.6
Issue	Q

VIKING HEAVY DUTY ASPHALT PUMPS (Cast Iron)
SERIES 224A, 224AE, 4224A, 4224AE, 324A, 4324A, 124E, 324E
 See also Viking General Purpose Asphalt Pumps on pages 430.1 to 430.5 (Series 34 & 32E)

Heavy-Duty, Foot-Mounted Internal Gear Pumps

The cast iron Universal Seal pump is commonly used for asphalt applications. It can be heated by utilizing jacketing for steam/hot oil or built-in electric heat cartridges.

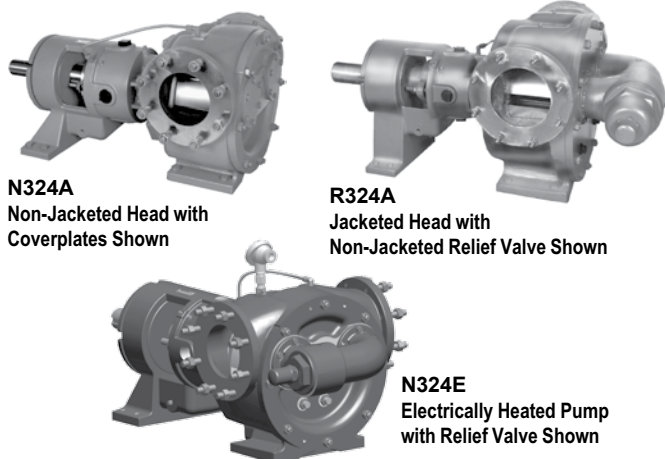
Jacketed Pumps



Standard-Jacketed Pump Cutaway – H4224A

Jacketing

Jacketed pumps provide a cavity, or jacket, on the external wall of the pump through which steam or heat transfer liquid can be passed. The heat transfer medium flows in a closed loop back to the boiler or heater. Standard jacketed pumps include jacketing on the head and bracket, and are used for melting asphalt prior to startup. This series includes models 224A, 224AE, 4224A, 4224AE, 324A and 4324A.



Electrically Heated Pumps

The electrically heated pump is specifically designed to heat the asphalt within the pump, prior to start-up. Heat cartridges located on the bracket or casing heat the area behind the rotor and stuffing box. The design also uses heat cartridges installed in the head to quickly melt asphalt throughout the casing.

Porting and Sealing

A variety of opposite and 90° port configurations are available, including top suction with bottom or side discharge designs typically mounted at the bottom of a tank or reactor.

The Universal Seal design allows the use of packing, component seals or cartridge seals.

Relief Valve Configurations

Jacketed pumps are provided with a jacketed head with no relief valve as standard. Integral relief valves in jacketed and non-jacketed configurations are available on the “L” through “N” sizes,

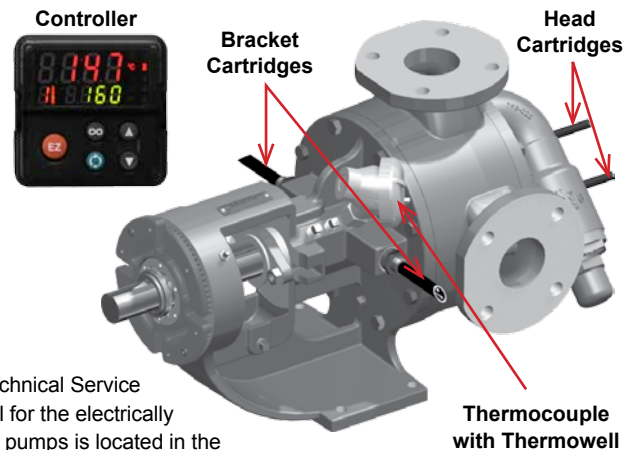
① Pressure Range	To 200 PSI (14 Bar)
① Temperature Range	to +450°F (to +232°C)
① Viscosity Range	31 SSU to 2,000,000 SSU (1 cP to 440,000 cPs.)
① Flow Range	to 1,600 GPM (to 364 m³/h)

① Values shown represent minimums or maximums. Some special construction or consideration may be required before a cataloged pump can be applied to an application involving maximum pressure or minimum or maximum temperature and/or viscosity.

Metric conversions are based on US measurements and rounded to the nearest whole number.

Controlling Electrically Heated Pumps

Viking Pump offers a controller for its electrically heated pumps. It is a closed loop PID control providing fast, yet effective time to temperature with minimal overshoot to prevent overheating. The control system includes a thermocouple and thermowell adapter for mounting, and a controller which powers all the heat cartridges on one pump. (N-size requires a 40-amp relay) The controller has a user-adjustable temperature set point, up to a preset maximum. When the set point is reached, a relay can be wired to alert the operator, or prevent a pump from being started until the asphalt is melted. It can be ordered with present maximum temperature of either 150°F, 250°F, 350°F or 450°F; or 65°C, 120°C, 175°C or 230°C. See specifications on page 2 for number of cartridge heaters and wattages by pump size.



NOTE:

The Technical Service Manual for the electrically heated pumps is located in the Universal Seal manuals: TSM 630.1 (H-LL sizes), TSM 630.2 (LS-QS sizes) and TSM 630.3 (N-RS sizes)

but require a non-jacketed valve-type head. Electrically heated pumps are provided with a non-jacketed relief valve as standard.

The “N” size pump is standard with a jacketed bracket and non-jacketed head and non-jacketed relief valve. A jacketed head, or a jacketed relief valve with a non-jacketed valve-type head, is available as an option.

The “R” size pump is standard with a jacketed bracket, a jacketed head and non-jacketed relief valve. For the “RS” size contact the factory for assistance with jacketing options.

The “RS” size is not available with relief valve.

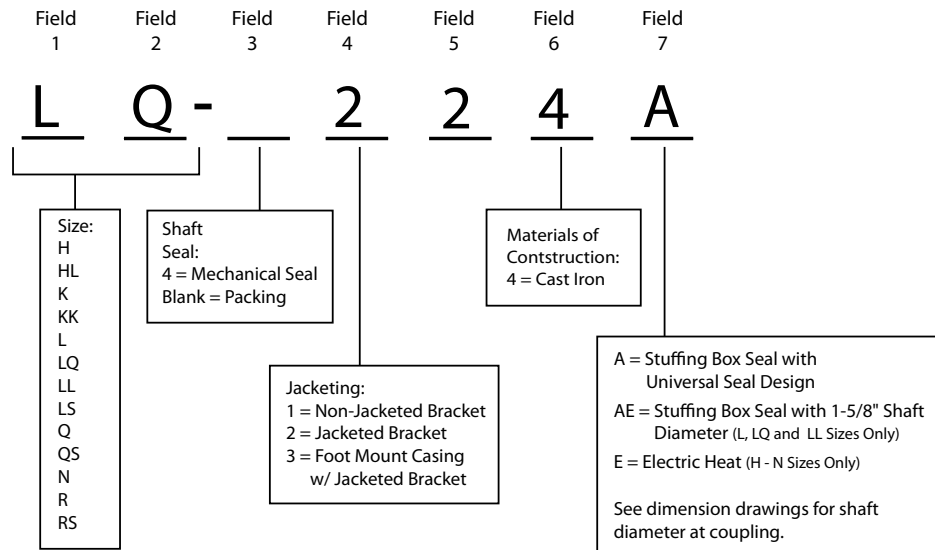
VIKING HEAVY DUTY ASPHALT PUMPS (Cast Iron)

SERIES 224A, 224AE, 4224A, 4224AE, 324A, 4324A, 124E, 324E

See also Viking General Purpose Asphalt Pumps on pages 430.1 to 430.5 (Series 34 & 32E)

Section	430
Page	430.7
Issue	Q

Model Number Key



Note on Field 4 that only the N, R and RS sizes are the foot mount casing with jacketed bracket (3). All other sizes are available with a jacketed (2) bracket. The N size is standard with a jacketed bracket and non-jacketed head and non-jacketed relief valve, while the R size is standard with a jacketed bracket, a jacketed head, and a non-jacketed relief valve. There are relief valve options available on those pump models designed to accept a relief valve. Options include a jacketed relief valve for the N pump (only available with the non-jacketed head). A non-jacketed relief valve is available for the R pump.

Note that on L, LQ and LL pumps with the "AE" designation at the end of the model number will have 1 5/8" shaft as standard, the L, LQ and LL pumps ending in "A" or "E" will have a 1 7/16" shaft standard. The "AE" designation, i.e., LQ224AE is dimensionally interchangeable with a LQ224A or LQ225 except that the "AE" model has a 1-7/16" shaft at the drive end versus 1-1/8" for the other models. The "AE" version is recommended in severe-duty applications or those where stress corrosion may be encountered. (Dimensional drawings are located on pages 430.10-430.11).

Electric Heat Specifications

Heat cartridges (pre-installed on pump)

All heaters are 240 VAC, 1 phase, 50/60 Hz

Pump Size	Head Cartridges	Watts/Cartridge (Head)	Bracket/Casing Cartridges	Watts/Cartridge (bracket/casing)	Total Watts
H124E	1	75	2	100	275
HL124E	1	75	2	100	275
K124E	3	130	2	150	690
KK124E	3	130	2	150	690
L124E	2	350	2	250	1200
LQ124E	2	350	2	250	1200
LL124E	2	375	2	250	1250
LS124E	2	375	2	250	1250
Q124E	3	500	2	350	2200
QS124E	3	500	2	350	2200
N324E	2	900	2 ⊕	350	2500

⊕ Heat cartridges are located in the casing.

Materials: Incoloy® outer sheath, PFA moisture seal, Brass NPT fitting

Leads: Two - fiberglass-insulated leads rated to 842°F/450°C for temperature resistance (H-QS sizes, 36" lead length) (N size, 72" lead length) in flexible stainless steel hose for abrasion resistance. Two leads extend 12" past end of SS hose. Normal practice is to wire all cartridges to local junction box at pump, with one cable to controller.

Agency Approvals: UL, CSA, VDE, CE

Control System (accessory not included with pump)

Thermocouple

Type J thermocouple with thermowell in weather-resistant housing with 1/2" MNPT fitting to mount in pump.

Controller

Enclosure: 1/16 DIN, NEMA 4X / IP66 for panel mount

Mains power: 240 VAC, 1 phase

Heater Output: 15A NO-ARC, Form A

Control Algorithm: PID, with pre-set bandwidths

Set point Achieved Relay Output: Mechanical relay, 5A, Form A

Agency Approvals: UL, CSA, CE, RoHS, W.E.E.E., FM

N-size pump requires a separate 40-amp relay.

WARNING: Use National Electric Code (NEC) or other country-specific standard wiring and safety practices when wiring and connecting this controller to a power source and to electrical sensors, heaters or peripheral devices. Failure to do so may result in damage to the equipment and property, and/or injury or loss of life.

Section	430
Page	430.8
Issue	Q

VIKING HEAVY DUTY ASPHALT PUMPS (Cast Iron)
SERIES 224A, 224AE, 4224A, 4224AE, 324A, 4324A, 124E, 324E
 See also Viking General Purpose Asphalt Pumps on pages 430.1 to 430.5 (Series 34 & 32E)

Materials of Construction - All Series

Specifications

Note: Sizes HL, K, KK, LQ, LS & N show two different max speed and pressure options. Use higher speed on clean asphalt only.

Model			Ports		Nominal Pump Rating (750 SSU and below)			Maximum Hydrostatic Pressure		④ Maximum Discharge Pressure		⑤⑥ Maximum Recommended Temperature for Standard Pump				Steel Fitted Recommended Above		Approximate Shipping Weight with Valve	
Jacketed Pumps		Electric Heat										Packed		Packed		Packed		Mechanical Seal	
Packed	Stuffing Box Mechanical Seal	Packed	In.	mm	GPM	m ³ /hr	RPM	PSIG	BAR	PSIG	BAR	Packed		Mechanical Seal		SSU	cSt	lbs.	kG
												F	C	F	C				
H224A	H4224A	H124E	②1.5	38	15	3.4	1750	400	28	200	14	450	232	Consult Factory		25,000	5,500	42	19
HL224A	HL4224A	HL124E	②1.5	38	30	6.8	1750	400	28	200	14	450	232			7,500	1,650	45	21
HL224A	HL4224A	HL124E	②1.5	38	50	11	2900	400	28	125	9	450	232			7,500	1,650	45	21
K224A	K4224A	K124E	②2	50	75	17	780	400	28	200	14	450	232			25,000	5,500	110	50
K224A	K4224A	K124E	②2	50	90	20	950	400	28	125	9	450	232			25,000	5,500	110	50
KK224A	KK4224A	KK124E	②2	50	100	23	780	400	28	200	14	450	232			25,000	5,500	115	52
KK224A	KK4224A	KK124E	②2	50	120	27	950	400	28	125	9	450	232			25,000	5,500	115	52
L224A/AE	L4224A/AE	L124E	②2	50	135	30	640	400	28	200	14	450	232			25,000	5,500	165	75
L224A	L4224A	L124E	②2	50	210	48	950	400	28	125	9	450	232			25,000	5,500	165	75
LQ224A/AE	LQ4224A/AE	LQ124E	③2.5	65	135	30	640	400	28	200	14	450	232			25,000	5,500	185	84
LQ224A	LQ4224A	LQ124E	③2.5	65	210	48	950	400	28	125	9	450	232			25,000	5,500	185	84
LL224A/AE	LL4224A/AE	LL124E	③3	75	140	32	520	400	28	200	14	450	232			2,500	550	195	88
LS224A	LS4224A	LS124E	③3	75	200	45	640	400	28	200	14	450	232			75,000	16,500	200	91
LS224A	LS4224A	LS124E	③3	75	230	52	720	400	28	125	9	450	232			75,000	16,500	200	91
Q224A	Q4224A	Q124E	④4	100	300	68	520	400	28	200	14	450	232			7,500	1,650	455	206
QS224A	QS4224A	QS124E	④6	150	500	114	520	400	28	200	14	450	232			75,000	16,500	555	252
N324A	N4324A	N324E	④6	150	600	136	350	400	28	200	14	450	232			75,000	16,500	810	376
N324A	N4324A	N324E	④6	150	685	155	420	400	28	125	9	450	232			75,000	16,500	810	376
R324A	R4324A	---	④8	200	1100	250	280	400	28	200	14	450	232			25,000	5,500	1435	650
RS324A	RS4324A	---	④10	254	1600	364	280	400	28	125	9	450	232			25,000	5,500	1580	718

- ① Port sizes are inch standard, not metric design or size. See p. 630.16 for other port size options.
- ② Ports are tapped for standard (NPT) pipe.
- ③ Ports are suitable for use with 125# ANSI cast iron flanges or flanged fittings.
- ④ For maximum recommended discharge pressures when handling other viscosities and/or other speeds, see performance curves, which can be electronically generated with

- the Viking Pump Selector Program, located on www.vikingpump.com. If suction pressure exceeds 50 PSIG, consult factory.
- ⑤ Higher temperatures can be handled with special construction, consult factory.
- ⑥ Consult factory for maximum temperatures for mechanical seals.
- ⑦ H and HL sizes available with tapped ports only due to interference between the bracket heat cartridge and flange.

Construction —
Series 224A, 4224A, 224AE, 4224AE, 124E, 324A, 4324A & 324E (all sizes)

Pump Construction	Casing	Head & Jacketed Head Plate	Bracket	Rotor	Pressure Relief Valve	Idler	Rotor Shaft	Idler Pin	Shaft Sealing		Bushings
									Packed	Mech. Seal	Idler
Standard Construction	Cast Iron ASTM A48, Class 35B	Cast Iron ASTM A48, Class 35B	Cast Iron ASTM A48, Class 35B	① Cast Iron ASTM A48, Class 35B	Cast Iron ASTM A48, Class 35B	③ Cast Iron ASTM A48 Class 35B	Steel ASTM A108, Grade 1045	Hardened Steel ASTM A108, Grade 10L45	Standard	Consult Factory	Bronze ASTM B584 (B505), Alloy C93700
Steel Fitted				Standard							

NOTE: Jacketed pump sizes H through M, relief valve cannot be used on pump with jacketed head plate or jacketed head. The N size is standard with a jacketed bracket and non-jacketed head and non-jacketed relief valve. The R is standard with a jacketed bracket, jacketed head, and non-jacketed relief valve. RS size relief valve not available. Contact factory for jacketing options.

- ① KK, LS, QS, N and RS sizes have ductile iron rotor, ASTM A536 Grade 60-40-18.
- ② Steel fitted Q and QS sizes have steel idler.
- ③ H and HL sizes have powdered metal idler, MPIF Std 35 FC-0208-50.
- ④ Material specification for HL steel rotor is AISI 8620, LS steel rotor is ASTM A148 80-50.

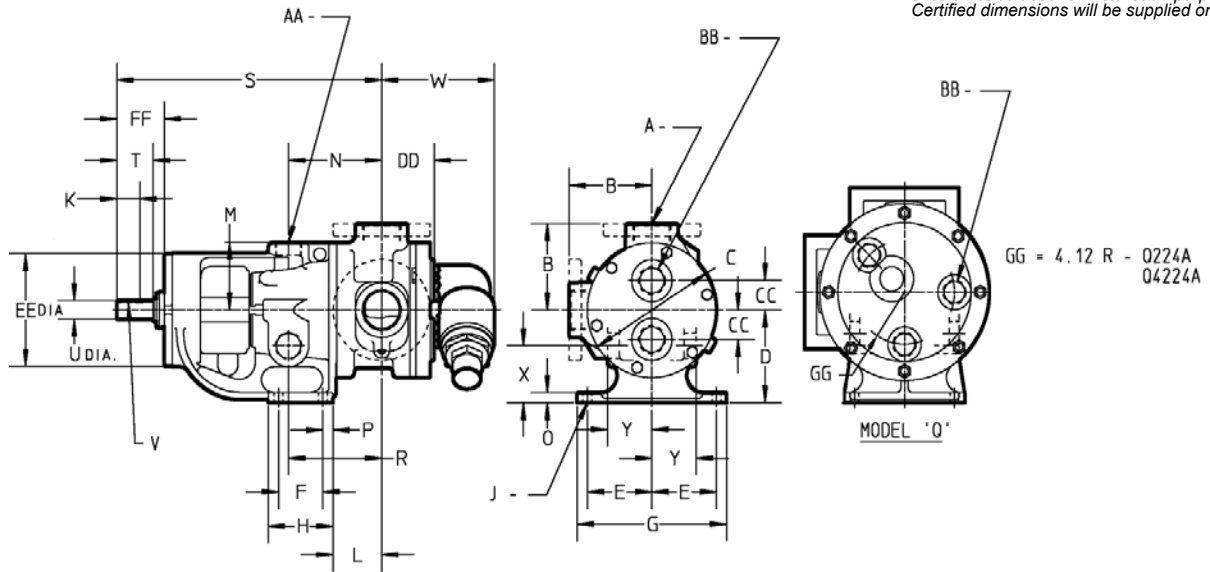
VIKING HEAVY DUTY ASPHALT PUMPS (Cast Iron)
SERIES 224A, 224AE, 4224A, 4224AE, 324A, 4324A, 124E, 324E

See also Viking General Purpose Asphalt Pumps on pages 430.1 to 430.5 (Series 34 & 32E)

Section	430
Page	430.9
Issue	Q

Dimensions - H through Q Sizes – Cast Iron Construction – Jacketed Pumps

Dimensions given are for guidance only and should not be used for installation purposes. Certified dimensions will be supplied on request.



NOTE: Dimensions “R” through “FF” on next page

Model Number		A (in)		B	C	D	E	F	G	H	J	③ K	L	M	N	O
Packed	Stuffing Box Seal															
H224A HL224A	H4224A HL4224A	①1.5	in	3.00	4.75	3.50	2.75	2.25	6.75	3.50	0.47	0.99	3.38	2.38	4.00	0.56
			mm	76.2	120.6	88.9	69.8	57.1	171.4	88.9	11.9	25.1	85.8	60.5	101.6	14.2
K224A KK224A	K4224A KK4224A	①2	in	5.12	8.00	5.50	4.00	2.75	9.25	4.00	0.53	1.42	3.00	4.00	5.75	0.62
			mm	130.0	203.2	139.7	101.6	69.8	234.9	101.6	13.5	36.1	76.2	101.6	146.0	15.7
L224A L224AE	L4224A L4224AE	①2	in	6.50	10.25	7.00	4.38	4.00	10.00	5.38	0.53	2	3.38	5.12	6.56	0.62
			mm	165.1	260.3	177.8	111.3	101.6	254	136.7	13.5	50.8	85.9	130.0	166.6	15.7
LQ224A LQ224AE	LQ4224A LQ4224AE	②2.5	in	7.19	10.25	7.00	4.38	4.00	10.00	5.38	0.53	2	3.38	5.12	6.56	0.62
			mm	182.6	260.3	177.8	111.3	101.6	254	136.7	13.5	50.8	85.9	130.0	166.6	15.7
LL224A LL224AE	LL4224A LL4224AE	②3	in	7.19	10.25	7.00	4.38	4.00	10.00	5.38	0.53	2	3.38	5.12	6.56	0.62
			mm	182.6	260.3	177.8	111.3	101.6	254	136.7	13.5	50.8	85.9	130.0	166.6	15.7
LS224A	LS4224A	②3	in	7.19	10.25	7.00	4.38	4.00	10.00	5.38	0.53	2.55	4.75	5.12	7.40	0.62
			mm	182.6	260.3	177.8	111.3	101.6	254	136.7	13.5	64.8	120.6	130.0	188.0	15.7
Q224A	Q4224A	②4	in	8.25	14.00	8.75	4.12	4.00	10.00	6.00	0.69	3.58	6.62	7.00	7.62	0.75
			mm	209.5	355.6	222.2	104.6	101.6	254	152.4	17.5	90.9	168.1	177.8	193.5	19.0

① Port(s) tapped for standard (NPT) pipe.

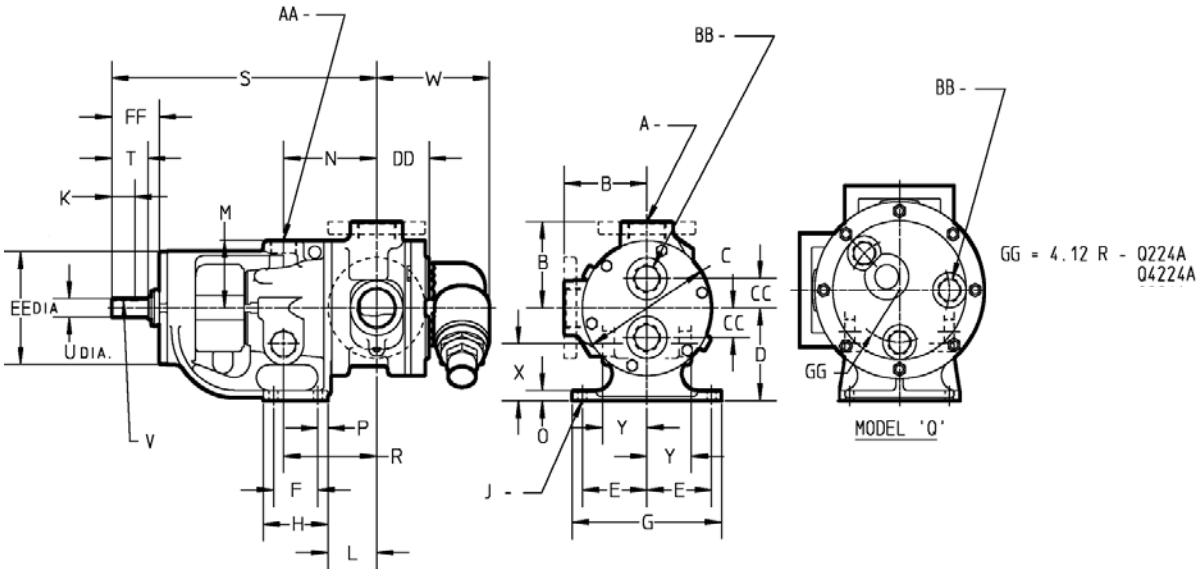
② Port(s) suitable for use with 125# ANSI cast iron companion flanges or flanged fittings.

③ “K” dimension for Cast Iron L, LQ and LL sizes is for “A” models. “K” dimension for L, LQ and LL size 224AE and 4224AE pumps is 1.44” (36.6mm).

Section	430
Page	430.10
Issue	Q

VIKING HEAVY DUTY ASPHALT PUMPS (Cast Iron)
SERIES 224A, 224AE, 4224A, 4224AE, 324A, 4324A, 124E, 324E
 See also Viking General Purpose Asphalt Pumps on pages 430.1 to 430.5 (Series 34 & 32E)

Dimensions - H through Q Sizes – Cast Iron Construction – Jacketed Pumps (Cont'd)



Model Number			P	R	S	⑥ T	⑦ U	⑧ V	W	X	Y	⑤ AA	⑤ BB	CC	DD	EE	FF
Packed	Stuffing Box Seal																
H224A	H4224A	in	0.62	4.00	12.06	1.62	0.75	.19 X .09	4.04	1.80	1.83	0.75	0.50	0.94	2.41	5.75	2.30
HL224A	HL4224A	mm	15.7	101.6	306.3	41.1	19.0	4.83 X 2.29	102.6	45.7	46.5	19.0	12.7	23.9	61.2	146.0	58.4
K224A	K4224A	in	0.62	5.75	16.38	2.25	1.12	.25 X .12	7.00	3.38	2.75	1.25	1.25	1.75	3.25	6.75	2.92
KK224A	KK4224A	mm	15.7	146.0	416.0	57.1	28.4	6.35 X .05	177.8	85.9	69.8	31.7	31.7	44.4	82.5	171.4	74.2
L224A	L4224A	in	0.62	6.56	17.88	2.25	1.12	.38 X .19	7.18	4.62	3.25	1.25	1	3.00	3.81	6.75	2.93
L224AE	L4224AE	mm	15.7	166.6	454.2	57.1	28.4	9.65 X .83	182.4	117.3	82.5	31.7	25.4	76.2	96.8	171.4	74.4
LQ224A	LQ4224A	in	0.62	6.56	17.88	2.25	1.12	.38 X .19	7.18	4.62	3.25	1.25	1	3.00	3.81	6.75	2.93
LQ224AE	LQ4224AE	mm	15.7	166.6	454.2	57.1	28.4	9.65 X .83	182.4	117.3	82.5	31.7	25.4	76.2	96.8	171.4	74.4
LL224A	LL4224A	in	0.62	6.56	17.88	2.25	1.12	.38 X .19	7.18	4.62	3.25	1.25	1	3.00	4.31	6.75	2.93
LL224AE	LL4224AE	mm	15.7	166.6	454.2	57.1	28.4	9.65 X .83	182.4	117.3	82.5	31.7	25.4	76.2	109.5	171.4	74.4
LS224A	LS4224A	in	0.62	7.00	19.25	3.50	1.44	.38 X .19	7.72	4.40	3.30	1.25	1	3.00	4.50	7.00	4.03
		mm	15.7	177.8	488.9	88.9	36.58	9.65 X .83	196.1	111.8	83.8	31.7	25.4	76.2	114.3	177.8	102.4
Q224A	Q4224A	in.	1.00	6.62	23.75	4.50	1.94	.50 X .25	11.25	5.50	4.50	1.5	1.25	---	4.57	8.38	5.35
		mm	25.4	168.1	603.2	114.3	49.3	12.70 X .35	285.7	139.7	114.3	38.1	31.7	---	116.1	212.8	135.9

⑤ Ports for steam or hot oil jacketing are inch standard NPT threads. Metric (mm) equivalents are for information only, and do not indicate a metric thread size.
 ⑥ "T" dimension show for Cast Iron sizes L, LQ and LL is for "A" models. Dimension for L, LQ and LL size 224AE and 4224AE pumps is 2.35" (59.7 mm).
 ⑦ "U" dimension shown for Cast Iron sizes L, LQ and LL is for "A" models. "U" dimension for L, LQ and LL size 224AE and 4224AE pumps is 1.44" (36.6 mm).
 ⑧ "V" dimension shown for Cast Iron sizes L, LQ and LL is for "A" models. "V" dimension for L, LQ and LL size 224AE and 4224AE pumps is 0.38 X 0.19" (9.65 X 4.83 mm).

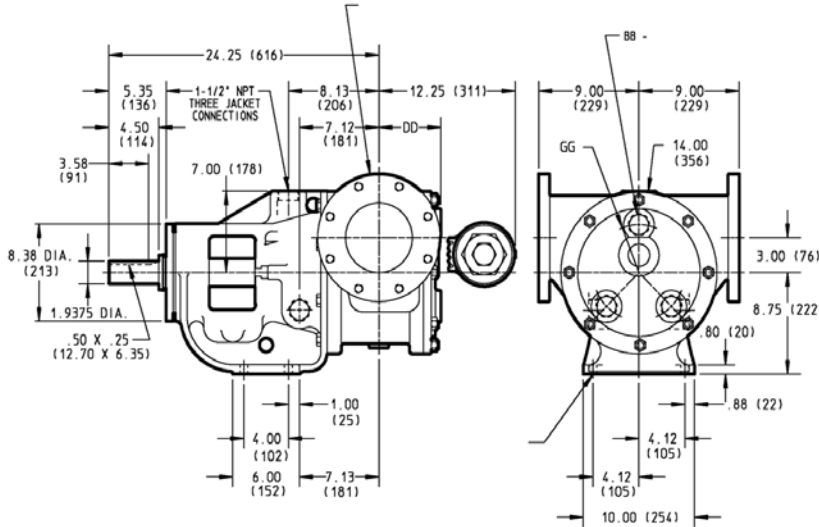
VIKING HEAVY DUTY ASPHALT PUMPS (Cast Iron)
SERIES 224A, 224AE, 4224A, 4224AE, 324A, 4324A, 124E, 324E

See also Viking General Purpose Asphalt Pumps on pages 430.1 to 430.5 (Series 34 & 32E)

Section	430
Page	430.11
Issue	Q

Dimensions - QS Size – Jacketed Series 224A and 4224A

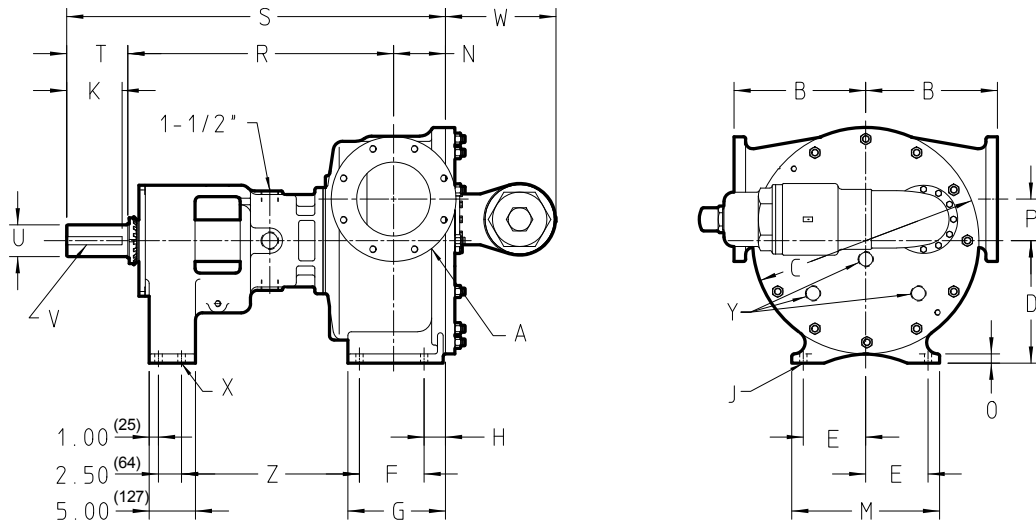
Dimensions given are for guidance only and should not be used for installation purposes. Certified dimensions will be supplied on request.



Other Dimensions	
BB*	1.25 (31.75)
DD	5.57 (141.48)
GG	4.12 (105)

* Ports for steam or hot oil jacketing are inch standard NPT threads. Metric (mm) equivalents are for information only, and do not indicate a metric thread size.

Dimensions - N, R & RS Sizes – Jacketed Series 324A and 4324A



Model Number		A (in)	B	C	D	E	F	G	H	J	K	M	N	O	P	R	S	T	U	V	W	X	Y	Z	
N324A	N4324A	②	in	9.75	17.25	9.50	5.00	6.25	8.69	1.62	0.69	4.50	12.00	4.50	1.00	3.00	26.00	36.50	6.00	2.44	.62x.31	8.63	0.69	n.a.	18.94
		6	mm	24.6	438.1	241.3	127.0	158.7	220.7	41.1	17.5	114.3	304.8	114.3	25.4	76.2	660.4	927.1	152.4	62.0	15.74 x7.87	219.2	17.5	n.a.	481.0
R324A	R4324A	②	in	14.25	24.50	13.25	6.75	7.00	10.56	2.31	0.78	6.00	16.00	5.62	1.00	4.50	28.75	41.00	6.62	3.44	.88x.44	12.00	0.69	1.25	19.25
		8	mm	361.9	622.3	336.5	171.4	177.8	268.2	58.7	19.8	152.4	406.4	142.7	25.4	114.3	730.2	1041	168.1	87.4	22.35 x11.18	304.8	17.5	31.7	488.9
RS324A	RS4324A	②	in	14.25	24.5	13.25	6.75	7.00	13.12	4.81	0.88	6.00	16.46	8.12	1.30	4.50	28.55	43.49	6.62	3.44	.88x.44	12.00	0.88	1.25	19.25
		10	mm	361.9	622.30	336.5	171.4	177.8	333.24	122.17	22.35	152.4	418.08	206.24	33.02	114.3	725.17	1104.64	168.1	87.4	22.35 x11.18	304.8	22.35	31.7	488.9

NOTE: The N size is standard with a jacketed bracket and non-jacketed head and non-jacketed relief valve. The R size is standard with a jacketed bracket, a jacketed head, and a non-jacketed relief valve. RS contact factory for jacketing options.

© Ports are suitable for use with 125# ANSI cast iron (324A/4324A)

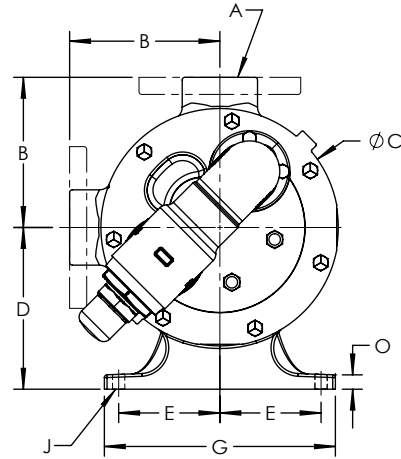
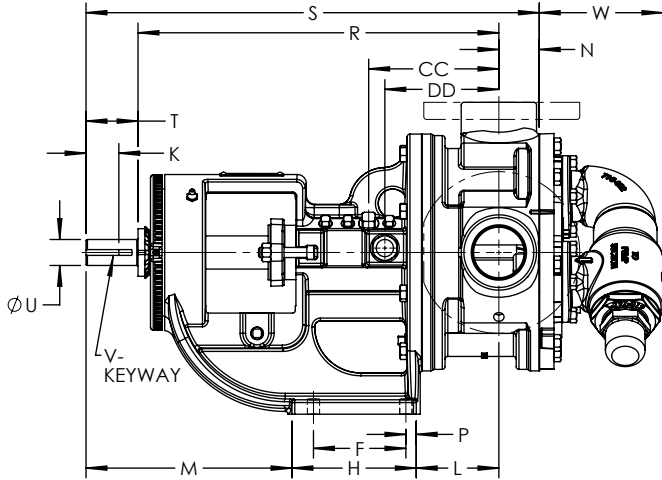
Section	430
Page	430.12
Issue	Q

VIKING HEAVY DUTY ASPHALT PUMPS (Cast Iron)
SERIES 224A, 224AE, 4224A, 4224AE, 324A, 4324A, 124E, 324E
 See also Viking General Purpose Asphalt Pumps on pages 430.1 to 430.5 (Series 34 & 32E)

Dimensions - H through Q Sizes – Electrically Heated – Non Jacketed

Dimensions given are for guidance only and should not be used for installation purposes. Certified dimensions will be supplied on request.

See drawing on Page 430.15 for cartridge heater and thermocouple port location.



Model Number	A (in)		B	C	D	E	F	G	H	J	K	L	M	N	O	P	R	S	T	U	V	W	CC	DD
Packed																							③	④
H124E HL124E	① 1.5	in	3.00	4.75	3.50	2.75	2.25	6.75	3.50	0.47	0.99	3.38	5.19	1.19	0.56	0.62	10.44	13.25	1.62	0.75	.19 x .09	2.85	2.84	2.40
		mm	76.2	120.6	88.9	69.8	57.1	171.4	88.9	11.9	25.1	85.8	131.8	30.2	14.2	15.7	265.2	336.5	41.1	19.0	4.83 x 2.29	72.4	72.14	60.96
K124E KK124E	① 2	in	5.12	8.00	5.50	4.00	2.75	9.25	4.0	0.53	1.42	3.00	9.38	1.75	0.62	0.62	14.12	18.12	2.25	1.12	.25 x .12	6.38	4.88	4.14
		mm	130.0	203.2	139.7	101.6	69.8	234.9	101.6	13.5	36.1	76.2	238.3	44.4	15.7	15.7	358.6	460.2	57.1	28.4	6.35 x 3.05	162.0	123.95	105.16
L124E	① 2	in	6.50	10.25	7.00	4.38	4.00	10.00	5.38	0.53	2.00	3.38	9.12	1.75	0.62	0.62	15.62	19.62	2.25	1.12	.25 x .12	5.43	5.62	4.92
		mm	165.1	260.3	177.8	111.3	101.6	254.0	136.7	13.5	50.8	85.9	231.6	44.4	15.7	15.7	396.7	498.3	57.1	28.7	6.35 x 3.05	137.9	142.75	124.97
LQ124E	② 2.5	in	7.19	10.25	7.00	4.38	4.00	10.00	5.38	0.53	2.00	3.38	9.12	1.75	0.62	0.62	15.62	19.62	2.25	1.12	.25 x .12	5.43	5.62	4.92
		mm	182.6	260.3	177.8	111.3	101.6	254.0	136.7	13.5	50.8	85.9	231.6	44.4	15.7	15.7	396.7	498.3	57.1	28.7	6.35 x 3.05	137.9	142.75	124.97
LL124E	② 3	in	7.19	10.25	7.00	4.38	4.00	10.00	5.38	0.53	2.00	3.38	9.12	2.25	0.62	0.62	15.62	20.12	2.25	1.12	.25 x .12	5.43	5.62	4.92
		mm	182.6	260.3	177.8	111.3	101.6	254.0	136.7	13.5	50.8	85.9	231.6	57.1	15.7	15.7	396.7	511.0	57.1	28.7	6.35 x 3.05	137.9	142.75	124.97
LS124E	② 3	in	7.19	10.25	7.00	4.38	4.00	10.00	5.38	0.53	2.55	4.75	9.12	2.44	0.62	0.62	15.75	21.69	3.50	1.44	.38 x .19	5.43	6.25	6.09
		mm	182.6	260.3	177.8	111.3	101.6	254.0	136.7	13.5	64.8	120.6	231.6	62.0	15.7	15.7	400.0	550.9	88.9	36.6	9.65 x 4.83	137.9	158.75	154.7
Q124E	② 4	in	8.25	14.00	8.75	4.12	4.00	10.00	6.00	0.69	3.58	6.62	11.12	3.00	0.75	1.00	19.25	26.75	4.50	1.94	.50 x .25	8.25	7.33	5.83
		mm	209.5	355.6	222.2	104.6	101.6	254.0	152.4	17.5	90.9	168.1	282.4	76.2	19.0	25.4	488.9	679.4	114.3	49.3	12.7 x 6.35	209.5	186.18	148.08

- ① Ports are tapped for standard (NPT) pipe. Other thread standards available.
- ② Ports are suitable for use with Class 125 ANSI cast iron companion flanges.
- ③ Port centerline to thermocouple port
- ④ Port centerline to bracket heat cartridge.

VIKING HEAVY DUTY ASPHALT PUMPS (Cast Iron)
SERIES 224A, 224AE, 4224A, 4224AE, 324A, 4324A, 124E, 324E

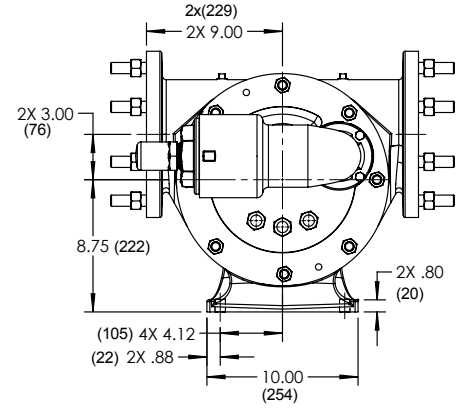
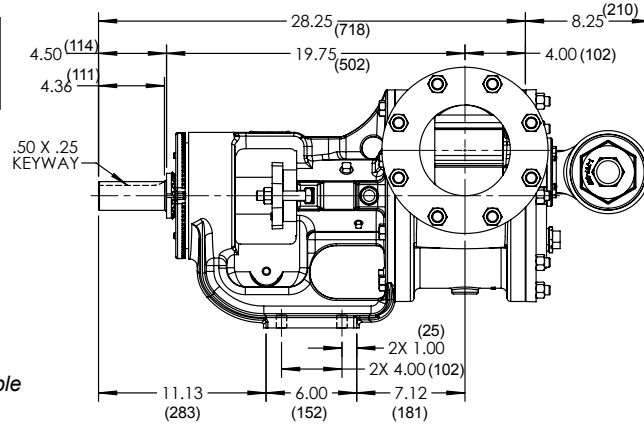
See also Viking General Purpose Asphalt Pumps on pages 430.1 to 430.5 (Series 34 & 32E)

Section	430
Page	430.13
Issue	Q

Dimensions - QS Size – Electrically Heated Asphalt Pump
Series 124E

Dimensions given are for guidance only and should not be used for installation purposes. Certified dimensions will be supplied on request.

Dimensions in inches (mm)

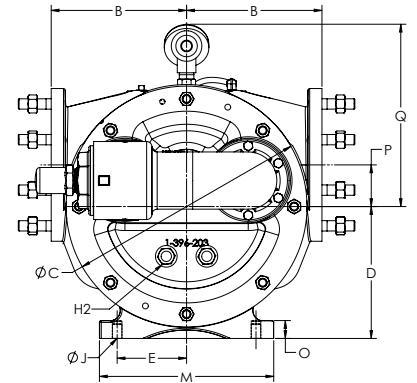
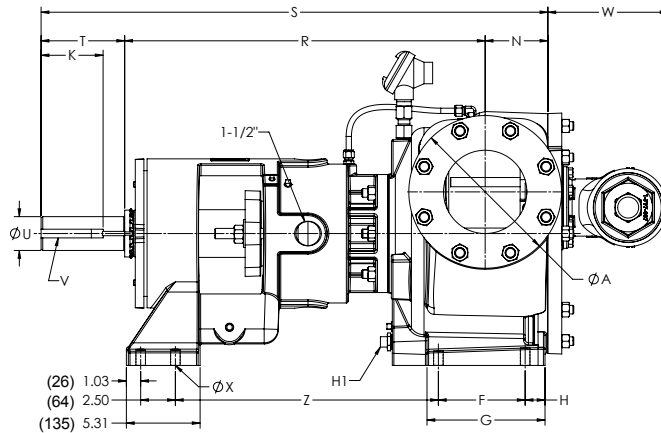


See drawing on Page 430.15 for cartridge heater and thermocouple location.

Dimensions - N Size – Electrically Heated Asphalt Pump
Series 324E

Dimensions given are for guidance only and should not be used for installation purposes. Certified dimensions will be supplied on request.

Dimensions in inches (mm)



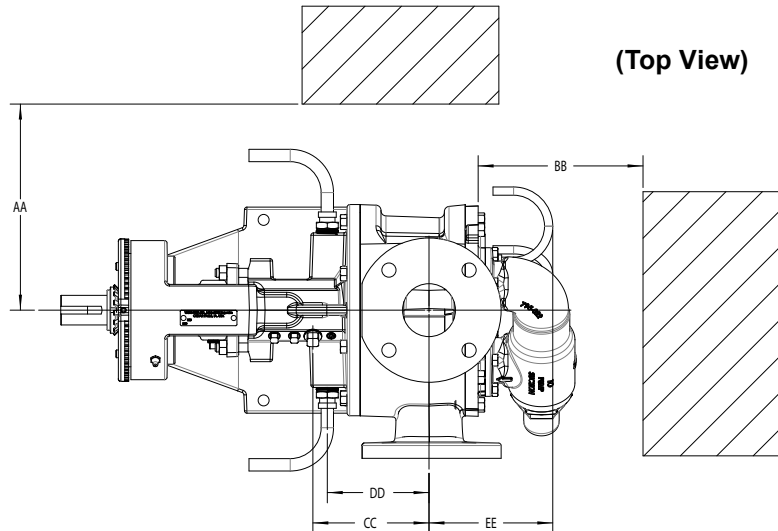
Model Number	A (in)	B	C	D	E	F	G	H	H1	H2	J	K	M	N	O	P	Q	R	S	T	U	V	W	X	Y	Z
N324E N324EH	①	in	9.75	17.25	9.50	5.00	6.25	8.69	1.62	0.75	0.69	4.50	12.00	4.50	1.00	3.00	13.11	26.00	36.50	6.00	2.44	.62 x.31	8.63	0.69	N/A	18.94
	6	mm	247.7	438.1	241.3	127.0	158.7	220.7	41.1	19	17.5	114.3	304.8	114.3	25.4	76.2	333	660.4	927.1	152.4	62.0	15.74 x7.87	219.2	17.5	N/A	481.0

① Ports are suitable for use with 125# ANSI cast iron.

Section	430
Page	430.14
Issue	Q

VIKING HEAVY DUTY ASPHALT PUMPS (Cast Iron)
SERIES 224A, 224AE, 4224A, 4224AE, 324A, 4324A, 124E, 324E
 See also Viking General Purpose Asphalt Pumps on pages 430.1 to 430.5 (Series 34 & 32E)

Dimensions - K through QS Sizes – Electrically Heated – Non Jacketed



Model	Bracket Heater to Port Center Line (DD)		Temp Probe to Port Center Line (CC)		Head Heater to Port Center Line (EE)		Required to Remove Heater			
	Inch	mm	Inch	mm	Inch	mm	(AA)		(BB)	
							Inch	mm	Inch	mm
H124E HL124E	2.40	60.96	2.84	72.14	5.66	143.76	8.13	206.50	7.75	196.85
K124E KK124E	4.14	105.16	4.88	123.95	5.66	143.76	8.13	206.50	7.75	196.85
L124E	4.92	124.97	5.62	142.75	5.71	145.03	7.00	177.80	6.25	158.75
LQ124E					5.75	146.05			6.75	171.45
LL124E					6.25	158.75			6.50	165.10
LS124E	6.09	154.69	6.25	158.75	6.44	163.58	9.25	234.95	7.75	196.85
Q124E	5.83	148.08	7.33	186.18	8.25	209.55			7.75	196.85
QS124E	6.33	160.78	7.83	198.88	9.25	234.95				

Optional Casings - Standard-Jacketed* Pumps

Model Number		Standard Jacketed Pumps' Standard Ports [†]	Standard Jacketed Pumps Optional Ports
Packed	Stuffing Box Seal		
H224A	H4224A	1.5" ①	1.5" ②Ⓡ, 2" ②Ⓡ
HL224A	HL4224A		
K224A	K4224A	2" ①	2" ②Ⓡ, 2.5" ②ⓈⓇ, 3" ②Ⓡ, 4" ②Ⓡ
KK224A	KK4224A	2" ①	2" ②Ⓡ, 2.5" ②Ⓡ, 3" ②Ⓡ, 4" ②Ⓡ
L224A/AE	L4224A/AE	2" ①	-----
LQ224A/AE	LQ4224A/AE	2.5" ②	3" ②Ⓡ, 4" ②Ⓡ, 6" ②Ⓡ
LL224A/AE	LL4224A/AE	3" ②	4" ②Ⓡ, 5" ②Ⓡ
LS224A	LS4224A	3" ②	4" ②Ⓡ
Q224A	Q4224A	4" ②	3" ②Ⓡ, 5" ②Ⓡ, 6" ②Ⓡ
QS224A	QS4224A	6" ②Ⓢ	6" ②Ⓢ
N324A	N4324A	6" ②Ⓢ	5" ②Ⓢ
R324A	R4324A	8" ②Ⓢ	6" ②Ⓢ
RS324A	RS4324A	10" ②Ⓢ	

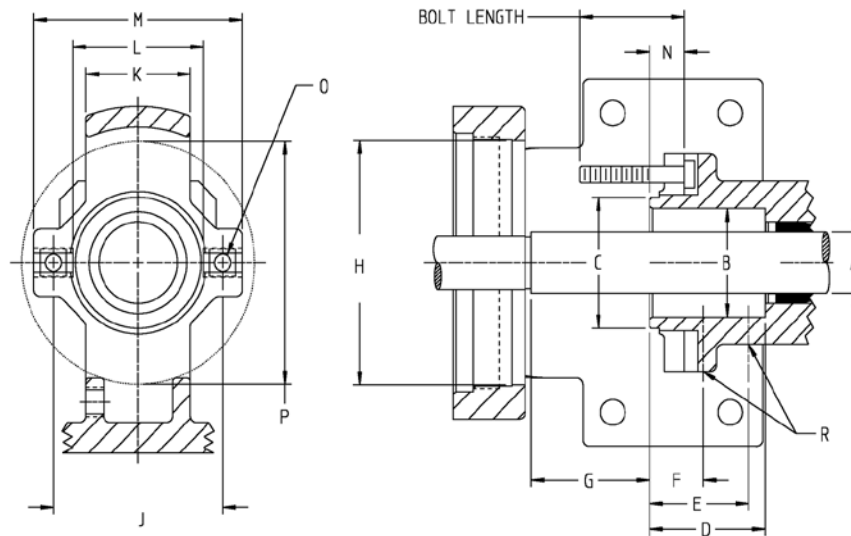
- ① Port(s) tapped for standard (NPT) pipe.
 - ② Port(s) suitable for use with 125# ANSI cast iron companion flanges or flanged fittings.
 - Ⓢ Non-Rotatable Ports at 90 degree angle, contact factory for available orientation (right hand or left hand).
 - Ⓡ Opposite Ports
 - Ⓡ 90° port arrangement for Right Hand inlet (viewed from shaft end).
- Contact factory for flange details (e.g. Flat face or raised face flanges).
- * Standard-Jacketed pumps have a jacketed bracket and head, but the casing is not jacketed. They have the series designations 224A/4224A & AE. Also the N324A, and N4324A, are standard with a jacketed bracket and non-jacketed head and relief valve, while the R324A, and R4324A, are standard with a jacketed bracket and jacketed head and non-jacketed relief valve. For the RS324A and RS4324A, contact the factory for jacketing options.
- Additional jacketed casings, including fully-jacketed casing, available in steel. See Universal Seal Catalog Section 630.

VIKING HEAVY DUTY ASPHALT PUMPS (Cast Iron)
SERIES 224A, 224AE, 4224A, 4224AE, 324A, 4324A, 124E, 324E

See also Viking General Purpose Asphalt Pumps on pages 430.1 to 430.5 (Series 34 & 32E)

Section	430
Page	430.15
Issue	Q

Stuffing Box Seal Chamber Dimensions



Pump Size		A	B	C	D	E	F	G	H	J	K	L	M	N	O	P	R
H & HL	In	1.12	2.00	2.41	2.22	1.90	1.03	2.27	4.50	3.00 to 3.50	2.00	2.50	4.00	0.66	5/16	4.47	1/8
	mm	28.6	50.8	61.2	56.4	48.3	26.2	57.7	114.3	76.2 to 88.9	50.8	63.5	101.6	16.8	7.9	113.5	3.2
K & KK	In	1.44	2.31①	3.00	3.13	2.25	1.25	3.00	5.25	3.50 to 4.50	2.50	3.00	5.00	0.38	7/16	5.25	1/4
	mm	36.5	58.7①	76.2	79.5	57.1	31.7	76.2	133.3	88.9 to 114.3	63.5	76.2	127.0	9.7	11.1	133.3	6.3
L, LQ, & LL (A)	In	1.44	2.31①	3.00	3.13	2.25	1.25	4.00	5.25	3.50 to 4.50	2.50	3.00	5.00	0.44	7/16	5.25	1/4
	mm	36.5	58.7①	76.2	79.5	57.1	31.7	101.6	133.3	88.9 to 114.3	63.5	76.2	127.0	11.2	11.1	133.3	6.3
L, LQ, & LL (AE)	In	1.62	2.375	3.00	3.13	2.25	1.16	3.52	5.25	3.50 to 4.50	3.00	3.00	5.00	0.46	7/16	5.25	1/4
	mm	41.3	60.3	76.2	79.5	57.1	29.5	89.4	133.3	88.9 to 114.3	76.2	76.2	127.0	11.7	11.1	133.3	6.3
LS	In	1.62	2.375	2.80	2.70	2.25	1.16	3.52	5.25	3.25 to 4.50	3.00	2.80	5.00	0.46	7/16	5.25	1/4
	mm	41.3	60.3	71.1	68.6	57.1	29.5	89.4	133.3	82.5 to 114.3	76.2	71.1	127.0	11.7	11.1	133.3	6.3
Q & QS	In	2.44	3.42	4.50	4.00	2.50	1.53	4.10	6.75	5.50 to 6.25	3.20	4.50	7.20	0.56	5/8	6.75	1/4
	mm	61.9	87.0	114.3	101.6	63.5	38.9	104.1	171.4	139.7 to 158.7	81.3	114.3	182.9	14.2	15.9	171.4	6.3
N	In	3.44	4.69	-	5.56	1.65	-	4.91	8.81	6.75	-	-	-	-	3/4②	9.00	1/4
	mm	87.3	119.3	-	141.2	41.9	-	124.7	223.8	171.4	-	-	-	-	19.0②	228.6	6.3
R	In	4.50	5.75	-	5.56	1.53	-	4.79	9.81	7.75	-	-	-	-	3/4②	9.81	1/4
	mm	114.3	146.1	-	141.2	38.9	-	121.7	249.2	196.8	-	-	-	-	19.0②	249.2	6.3
RS	In	4.50	5.75	-	5.56	1.53	-	4.79	9.81	7.75	-	-	-	-	3/4②	9.81	1/4
	mm	114.3	146.1	-	141.2	38.9	-	121.7	249.2	196.8	-	-	-	-	19.0②	249.2	6.3

① Bracket is counter bored to a diameter of 2.687 inches (68.25 mm), 0.12 inches (3.05 mm) deep from stuffing box face.
 ② Studs are used in place of cap screws.

Section	430
Page	430.16
Issue	Q

VIKING HEAVY DUTY ASPHALT PUMPS (Cast Iron)
SERIES 224A, 224AE, 4224A, 4224AE, 324A, 4324A, 124E, 324E
 See also Viking General Purpose Asphalt Pumps on pages 430.1 to 430.5 (Series 34 & 32E)

Performance Curve Notes

Printed performance curves are not available.

Performance curves can be electronically generated with the Viking Pump Selector Program. This program is located at www.vikingpump.com/pumpselector.

NPSH_R - Feet of Liquid S.G. 1.0

PUMP SIZE	PUMP SPEED [RPM]														
	100	125	155	190	230	280	350	420	520	640	780	950	1150	1450	1750
H, HL					1.7	1.8	1.9	2.1	2.4	2.8	3.4	4.5	6.2	9.5	13.5
K, KK		1.7	1.8	1.9	2.1	2.3	2.8	3.3	4.4	6.3	9.1				
L, LQ, LL, LS	1.7	1.8	2.0	2.2	2.5	3.0	3.8	5.0	7.3	10.8					
Q, QS	1.9	2.1	2.3	2.7	3.3	4.2	6.1	8.4	12.7						
N	2.1	2.5	3.5	4.5	6.3	9.5	15.0								
R, RS	2.7	3.2	4.2	5.8	8.2	11.9									

1. NPSH_A (Net Positive Suction Head *Available*) must be greater than the NPSH_R (Net Positive Suction Head *Required*) given in the above table.
2. VISCOSITY - Above chart applies to viscosities up thru 750 SSU. Consult factory or Viking representative for viscosities above 750 SSU.
3. For liquids other than water, divide by specific gravity.