

LMF / LMG Accessories



www.wealdelectronics.com

Weald
ELECTRONICS

MANUFACTURERS OF HIGH QUALITY MILITARY CIRCULAR CONNECTORS

Issue 9 Date: 09.04.2015

**LMF / LMG RANGE
ACCESSORIES
CONTENTS**

| | |
|---|-------|
| Application Of Cable Entry Fittings | 3 |
| Outlet Accessory Sets | 4-6 |
| Protective Caps For Aluminium Range | 7 |
| Protective Caps For Brass Range (Brass) | 8 |
| Protective Caps For Brass Range (Polythene) | 9 |
| Outlet Nuts | 10 |
| Conduit Adaptors | 11 |
| Tools | 12 |
| Wiring Instruction | 13-15 |
| Accessory Part Number Index | 16 |
| Product Safety Information | 17 |

**LMF / LMG RANGE
ACCESSORIES
APPLICATION OF CABLE ENTRY FITTINGS**

CABLE ENTRY FITTINGS

To assist in ordering the correct fittings for a specific cable, pages 4 to 6 illustrate COMPLETE OUTLET ACCESSORY SETS for various sizes and types of cable. Accessory sets other than those shown on pages 4 to 6 may be supplied to order on consultation.

SEALING

Cable entry fittings ensure sound sealing provided that the correct size of recommended fittings is used with each specific cable. Sealing is effected by either the union gasket or the sealing ring at the rear end of the outlet and by the outlet gasket at the front end. It may be necessary to increase the cable diameter to effect a seal at the rear end of the outlet.

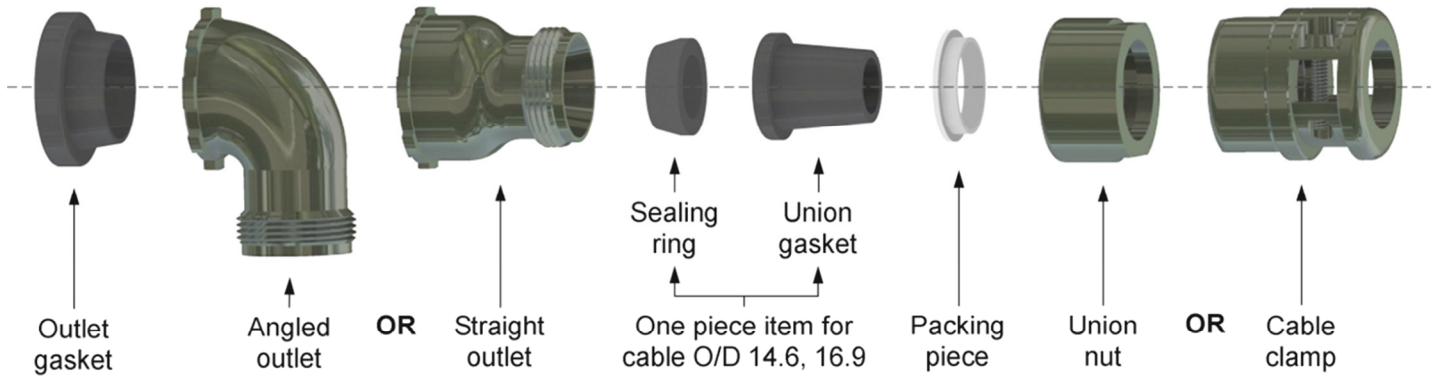
ASSEMBLING

The special tools shown on page 11 should be used to tighten locking rings, outlet nuts, etc. Cable clamp jaws should be tightened sufficiently to grip the cable, but over-tightening may cause the dielectric to flow and impair its insulating qualities.

DIMENSIONS

All dimensions with the exception of Imperial threads are in millimetres and are nominal, they are derived from original Imperial dimensions.

LMF / LMG RANGE ACCESSORIES OUTLET ACCESSORY SET FOR MULTICORE CABLE TOTALLY UNSCREENED



For assembly instruction see page 13. Where no min. cable O/D is shown, sleeve cable to max. O/D to achieve seal.

| | Shell Size | Cable O/D | | Outlet Accessory Set with Union Nut | | Outlet Accessory Set with Cable Clamp | | Code |
|------------------|------------|-----------|-------------|-------------------------------------|-------------------|---------------------------------------|-------------------|------|
| | | Min. mm | Max. mm | Straight Outlet | Rt. Angled Outlet | Straight Outlet | Rt. Angled Outlet | |
| ALUMINIUM | 1 | 5.90 | 7.40 | LMA/1/10601/20..* | LMA/1/10505/20..* | LMA/1/10625/20..* | LMA/1/10529/20..* | a |
| | | 7.50 | 8.90 | LMA/1/10602/20..* | LMA/1/10506/20..* | LMA/1/10626/20..* | LMA/1/10530/20..* | b |
| | | - | 9.30 x 6.70 | LMA/1/10603/20..* | LMA/1/10507/20..* | LMA/1/10627/20..* | LMA/1/10531/20..* | b |
| | 2 | 5.90 | 7.40 | LMA/1/10604/20..* | LMA/1/10508/20..* | LMA/1/10628/20..* | LMA/1/10532/20..* | c |
| | | 7.50 | 10.20 | LMA/1/10605/20..* | LMA/1/10509/20..* | LMA/1/10629/20..* | LMA/1/10533/20..* | d |
| | | 8.80 | 11.20 | LMA/1/10606/20..* | LMA/1/10510/20..* | LMA/1/10630/20..* | LMA/1/10534/20..* | e |
| | | - | 11.60 | LMA/1/10607/20..* | LMA/1/10511/20..* | LMA/1/10631/20..* | LMA/1/10535/20..* | f |
| | | - | 13.10 | LMA/1/10608/20..* | LMA/1/10512/20..* | LMA/1/10632/20..* | LMA/1/10536/20..* | f |
| | | - | 11.60 | LMA/1/10609/20..* | LMA/1/10513/20..* | LMA/1/10633/20..* | LMA/1/10537/20..* | g |
| | 3 | - | 13.10 | LMA/1/10610/20..* | LMA/1/10514/20..* | LMA/1/10634/20..* | LMA/1/10538/20..* | g |
| | | - | 17.60 | LMA/1/10611/20..* | LMA/1/10515/20..* | LMA/1/10635/20..* | LMA/1/10539/20..* | h |
| | | 14.60 | 17.40 | LMA/1/30040/20..* | LMA/1/30044/20..* | ----- | ----- | h |
| | | - | 17.60 | LMA/1/10612/20..* | LMA/1/10516/20..* | LMA/1/10636/20..* | LMA/1/10540/20..* | i |
| | | 14.60 | 17.40 | LMA/1/30041/20..* | LMA/1/30045/20..* | ----- | ----- | i |
| | | - | 17.60 | LMA/1/10613/20..* | LMA/1/10517/20..* | LMA/1/10637/20..* | LMA/1/10541/20..* | a |
| BRASS | 1 | 5.90 | 7.40 | LMA/1/10613/20..* | LMA/1/10517/20..* | LMA/1/10637/20..* | LMA/1/10541/20..* | a |
| | | 7.50 | 8.90 | LMA/1/10614/20..* | LMA/1/10518/20..* | LMA/1/10638/20..* | LMA/1/10542/20..* | b |
| | | - | 9.30 x 6.70 | LMA/1/10615/20..* | LMA/1/10519/20..* | LMA/1/10639/20..* | LMA/1/10543/20..* | b |
| | 2 | 5.90 | 7.40 | LMA/1/10616/20..* | LMA/1/10520/20..* | LMA/1/10640/20..* | LMA/1/10544/20..* | c |
| | | 7.50 | 10.20 | LMA/1/10617/20..* | LMA/1/10521/20..* | LMA/1/10641/20..* | LMA/1/10545/20..* | d |
| | | 8.80 | 11.20 | LMA/1/10618/20..* | LMA/1/10522/20..* | LMA/1/10642/20..* | LMA/1/10546/20..* | e |
| | | - | 11.60 | LMA/1/10619/20..* | ----- | LMA/1/10643/20..* | ----- | f |
| | | - | 13.10 | LMA/1/10620/20..* | ----- | LMA/1/10644/20..* | ----- | f |
| | | - | 11.60 | LMA/1/10621/20..* | LMA/1/10525/20..* | LMA/1/10645/20..* | LMA/1/10549/20..* | g |
| | 3 | - | 13.10 | LMA/1/10622/20..* | LMA/1/10526/20..* | LMA/1/10646/20..* | LMA/1/10550/20..* | g |
| | | - | 17.60 | LMA/1/10623/20..* | LMA/1/10527/20..* | LMA/1/10647/20..* | LMA/1/10551/20..* | h |
| | | 14.60 | 17.40 | LMA/1/30042/20..* | LMA/1/30046/20..* | ----- | ----- | h |
| | | - | 17.60 | LMA/1/10624/20..* | LMA/1/10528/20..* | LMA/1/10648/20..* | LMA/1/10552/20..* | i |
| | | 14.60 | 17.40 | LMA/1/30043/20..* | LMA/1/30047/20..* | ----- | ----- | i |
| | | - | 17.60 | LMA/1/10625/20..* | LMA/1/10529/20..* | LMA/1/10649/20..* | LMA/1/10553/20..* | j |

Use this chart to select the correct outlet accessory set to suit the type and size of cable and the shell size of plug or socket being used.

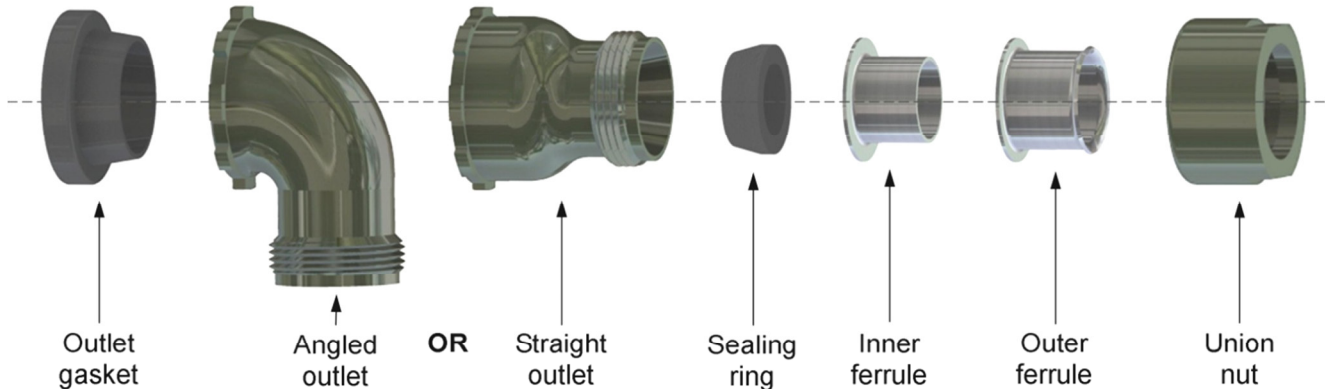
* Final figure of suffix must be added to the part number when ordering:

- 1 – LMG Range, cadmium olive drab plate, aluminium or brass**
- 3 – LMF and LMG Range, clean finish, aluminium or brass**
- 5 – LMF Range, cadmium plate and passivate, brass**

Other finishes available on request

LMF / LMG RANGE ACCESSORIES

OUTLET ACCESSORY SET FOR MULTICORE CABLE WITH OUTER COLLECTIVE SCREEN ONLY



For assembly instruction see page 14.

| | Shell Size | Cable O/D | | Outlet Accessory Set with | | Code |
|-----------|------------|-----------|---------|---------------------------|-------------------|------|
| | | Min. mm | Max. mm | Straight Outlet | Rt. Angled Outlet | |
| ALUMINIUM | 1 | 7.10 | 9.40 | LMA/1/02742/20..* | LMA/1/02759/20..* | a |
| | | 7.10 | 9.40 | LMA/1/02746/20..* | LMA/1/02763/20..* | c |
| | 2 | 9.90 | 11.70 | LMA/1/02748/20..* | LMA/1/02765/20..* | d |
| | | 11.40 | 12.20 | LMA/1/02750/20..* | LMA/1/02767/20..* | e |
| | | 13.50 | 14.60 | LMA/1/02753/20..* | LMA/1/02770/20..* | f |
| | | 11.70 | 13.50 | LMA/1/02754/20..* | LMA/1/02771/20..* | 9 |
| | 3 | 13.50 | 14.60 | LMA/1/02756/20..* | LMA/1/02773/20..* | 9 |
| | | 17.40 | 19.30 | LMA/1/02757/20..* | LMA/1/02774/20..* | h |
| | | 17.40 | 19.30 | LMA/1/02911/20..* | LMA/1/02775/20..* | i |
| | | 7.10 | 9.40 | LMA/1/02915/20..* | LMA/1/02932/20..* | a |
| BRASS | 1 | 7.10 | 9.40 | LMA/1/02915/20..* | LMA/1/02932/20..* | a |
| | | 7.10 | 9.40 | LMA/1/02919/20..* | LMA/1/02936/20..* | c |
| | | 9.90 | 11.70 | LMA/1/02921/20..* | LMA/1/02938/20..* | d |
| | | 11.40 | 12.20 | LMA/1/02923/20..* | ----- | e |
| | 2 | 13.50 | 14.60 | LMA/1/02926/20..* | ----- | f |
| | | 11.70 | 13.50 | LMA/1/02927/20..* | LMA/1/02944/20..* | g |
| | | 13.50 | 14.60 | LMA/1/02929/20..* | LMA/1/02946/20..* | g |
| | | 17.40 | 19.30 | LMA/1/02905/20..* | LMA/1/03100/20..* | h |
| | | 17.40 | 19.30 | LMA/1/02930/20..* | LMA/1/02947/20..* | i |
| | | 17.40 | 19.30 | LMA/1/02930/20..* | LMA/1/02947/20..* | i |

Use this chart to select the correct outlet accessory set to suit the type and size of cable and the shell size of plug or socket being used.

* Final figure of suffix must be added to the part number when ordering:

1 – LMG Range, cadmium olive drab plate, aluminium or brass

3 – LMF and LMG Range, clean finish, aluminium or brass

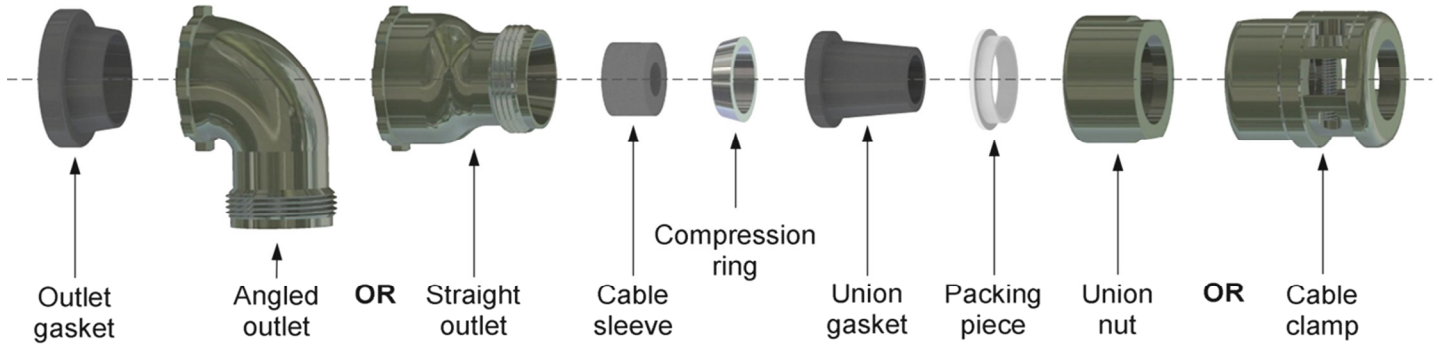
5 – LMF Range, cadmium plate and passivate, brass

Other finishes available on request

LMF / LMG RANGE ACCESSORIES

OUTLET ACCESSORY SET

FOR MULTICORE CABLE WITH ALL INDIVIDUALLY SCREENED LEADS AND NO COLLECTIVE SCREEN OR FOR MULTICORE CABLE WITH INNER COLLECTIVE SCREEN



For assembly instruction see page 15. Where no min. cable O/D is shown, sleeve cable to max. O/D to achieve seal.

| | Shell Size | Cable O/D | | Outlet Accessory Set with Union Nut | | Outlet Accessory Set with Cable Clamp | | Code | |
|-----------|------------|-----------|-------------------|-------------------------------------|-------------------|---------------------------------------|-------------------|-------------------|---|
| | | Min. mm | Max. mm | Straight Outlet | Rt. Angled Outlet | Straight Outlet | Rt. Angled Outlet | | |
| ALUMINIUM | 1 | 5.9 | 7.4 | LMA/1/08033/20..* | LMA/1/08044/20..* | LMA/1/13455/20..* | LMA/1/13431/20..* | a | |
| | | 7.5 | 8.9 | LMA/1/08035/20..* | LMA/1/08046/20..* | LMA/1/13456/20..* | LMA/1/13432/20..* | b | |
| | | --- | 9.3 x 6.7 | LMA/1/08034/20..* | LMA/1/08045/20..* | LMA/1/13457/20..* | LMA/1/13433/20..* | b | |
| | 2 | 5.9 | 7.4 | LMA/1/08036/20..* | LMA/1/08047/20..* | LMA/1/13458/20..* | LMA/1/13434/20..* | c | |
| | | 7.5 | 10.2 | LMA/1/08037/20..* | LMA/1/08048/20..* | LMA/1/13459/20..* | LMA/1/13435/20..* | d | |
| | | 8.8 | 11.2 | LMA/1/08038/20..* | LMA/1/08049/20..* | LMA/1/13460/20..* | LMA/1/13436/20..* | e | |
| | | --- | 11.6 | LMA/1/08039/20..* | LMA/1/08050/20..* | LMA/1/13461/20..* | LMA/1/13437/20..* | f | |
| | 3 | --- | 13.1 | LMA/1/08040/20..* | LMA/1/08051/20..* | LMA/1/13462/20..* | LMA/1/13438/20..* | f | |
| | | --- | 11.6 | LMA/1/08041/20..* | LMA/1/08052/20..* | LMA/1/13463/20..* | LMA/1/13439/20..* | g | |
| | | --- | 13.1 | LMA/1/08042/20..* | LMA/1/08053/20..* | LMA/1/13464/20..* | LMA/1/13440/20..* | g | |
| | | --- | 17.6 | LMA/1/08043/20..* | LMA/1/13429/20..* | LMA/1/13465/20..* | LMA/1/13441/20..* | h | |
| | | 14.6 | 17.4 | LMA/1/30064/20..* | LMA/1/30068/20..* | ----- | ----- | h | |
| | | --- | 17.6 | LMA/1/13454/20..* | LMA/1/13430/20..* | LMA/1/13466/20..* | LMA/1/13442/20..* | i | |
| | BRASS | 1 | 5.9 | 7.4 | LMA/1/13492/20..* | LMA/1/13467/20..* | LMA/1/13504/20..* | LMA/1/13480/20..* | a |
| | | | 7.5 | 8.9 | LMA/1/13493/20..* | LMA/1/13468/20..* | LMA/1/13505/20..* | LMA/1/13481/20..* | b |
| --- | | | 9.3 x 6.7 | LMA/1/13494/20..* | LMA/1/13469/20..* | LMA/1/13506/20..* | LMA/1/13482/20..* | b | |
| 2 | | 5.9 | 7.4 | LMA/1/13495/20..* | LMA/1/13470/20..* | LMA/1/13507/20..* | LMA/1/13483/20..* | c | |
| | | 7.5 | 10.2 | LMA/1/13496/20..* | LMA/1/13471/20..* | LMA/1/13508/20..* | LMA/1/13484/20..* | d | |
| | | 8.8 | 11.2 | LMA/1/13497/20..* | LMA/1/13472/20..* | LMA/1/13509/20..* | LMA/1/13485/20..* | e | |
| | | --- | 11.6 | LMA/1/13498/20..* | ----- | LMA/1/13510/20..* | ----- | f | |
| 3 | | --- | 13.1 | LMA/1/13499/20..* | ----- | LMA/1/13511/20..* | ----- | f | |
| | | --- | 11.6 | LMA/1/13500/20..* | LMA/1/13475/20..* | LMA/1/13512/20..* | LMA/1/13488/20..* | g | |
| | | --- | 13.1 | LMA/1/13501/20..* | LMA/1/13476/20..* | LMA/1/13513/20..* | LMA/1/13489/20..* | g | |
| | | --- | 17.6 | LMA/1/13502/20..* | LMA/1/13477/20..* | LMA/1/13514/20..* | LMA/1/13490/20..* | h | |
| | | 14.6 | 17.4 | LMA/1/30066/20..* | LMA/1/30070/20..* | ----- | ----- | h | |
| | | --- | 17.6 | LMA/1/13503/20..* | LMA/1/13478/20..* | LMA/1/13515/20..* | LMA/1/13491/20..* | i | |
| 14.6 | | 17.4 | LMA/1/30067/20..* | LMA/1/30071/20..* | ----- | ----- | i | | |

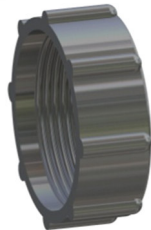
Use this chart to select the correct outlet accessory set to suit the type and size of cable and the shell size of plug or socket being used.

* Final figure of suffix must be added to the part number when ordering:

- 1 – LMG Range, cadmium olive drab plate, aluminium or brass
- 3 – LMF and LMG Range, clean finish, aluminium or brass
- 5 – LMF Range, cadmium plate and passivate, brass

**LMF / LMG RANGE
ACCESSORIES**

PROTECTIVE CAPS FOR ALUMINIUM RANGE (FINE THREAD)



FOR FREE PLUGS OR SOCKETS

| Shell Size | Code | Part Number |
|------------|------|-------------------|
| 1 | a b | LMA/1/03437/00..* |
| 2 | c d | LMA/1/03438/00..* |
| | e f | LMA/1/03439/00..* |
| 3 | g | LMA/1/03440/00..* |
| | h i | LMA/1/03441/00..* |

FOR FREE COUPLER PLUGS OR SOCKETS

| Shell Size | Code | Part Number |
|------------|------|-------------------|
| 1 | a b | LMA/1/03452/00..* |
| 2 | c d | LMA/1/03453/00..* |
| | e f | LMA/1/03454/00..* |
| 3 | g | LMA/1/03455/00..* |
| | h i | LMA/1/03456/00..* |

FOR FIXED PLUGS OR SOCKETS

| Shell Size | Part Number |
|------------|-------------------|
| 1 | LMA/1/03442/00..* |
| 2 | LMA/1/03443/00..* |
| 3 | LMA/1/03444/00..* |

POLYTHENE CAP ONLY FOR FIXED PLUGS OR SOCKETS, FREE COUPLER PLUGS OR SOCKETS

| Shell Size | Part Number |
|------------|-------------|
| 1 | LMA/2/41303 |
| 2 | LMA/2/41304 |
| 3 | LMA/2/41305 |

Note: All protective caps on this page are for use with aluminium connectors (fine thread) only.

* Final figure of suffix must be added to the part number when ordering:

1 – LMG Range, cadmium olive drab plate

3 – LMF and LMG Range, clean finish

Other finishes available on request

**LMF / LMG RANGE
ACCESSORIES**

PROTECTIVE CAPS FOR BRASS RANGE (COARSE THREAD)



| FOR FREE PLUGS OR SOCKETS | | |
|---------------------------|------|-------------------|
| Shell Size | Code | Part Number |
| 1 | a b | LMA/1/04111/00..* |
| 2 | c d | LMA/1/04112/00..* |
| | e f | LMA/1/04113/00..* |
| 3 | g | LMA/1/04114/00..* |
| | h i | LMA/1/04115/00..* |



| FOR FREE COUPLER PLUGS OR SOCKETS | | |
|-----------------------------------|------|-------------------|
| Shell Size | Code | Part Number |
| 1 | a b | LMA/1/04124/00..* |
| 2 | c d | LMA/1/04125/00..* |
| | e f | LMA/1/04126/00..* |
| 3 | g | LMA/1/04127/00..* |
| | h i | LMA/1/04128/00..* |



| FOR FIXED SQUARE FLANGE PLUGS OR SOCKETS | |
|--|-------------------|
| Shell Size | Part Number |
| 1 | LMA/1/04116/00..* |
| 2 | LMA/1/04117/00..* |
| 3 | LMA/1/04118/00..* |



| FOR FIXED ROUND FLANGE PLUGS OR SOCKETS | |
|---|-------------------|
| Shell Size | Part Number |
| 1 | LMA/1/41208/00..* |
| 2 | LMA/1/41209/00..* |
| 3 | LMA/1/41210/00..* |

Note: All protective caps on this page are for use with brass connectors (coarse thread) only.

* Final figure of suffix must be added to the part number when ordering:

- 1 – LMG Range, cadmium olive drab plate
- 3 – LMF and LMG Range, clean finish
- 5 – LMF Range, cadmium plate and passivate

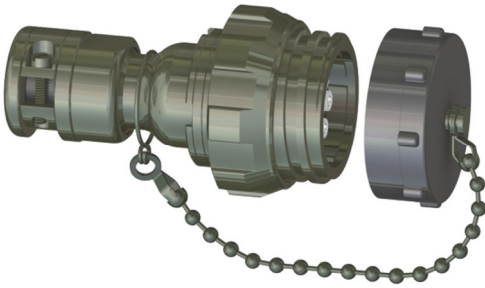
Other finishes available on request

**LMF / LMG RANGE
ACCESSORIES**

PROTECTIVE CAPS (POLYTHENE) FOR BRASS RANGE (COARSE THREAD)



| FOR FREE PLUGS OR SOCKETS | | | |
|---------------------------|------|----------------------|--------------------|
| Shell Size | Code | Assembly Part Number | Polythene Cap Only |
| 1 | a b | LMA/1/41150/00..* | LMA/2/41172 |
| 2 | c d | LMA/1/41153/00..* | LMA/2/41173 |
| | e f | LMA/1/41151/00..* | |
| 3 | g | LMA/1/41154/00..* | LMA/2/41174 |
| | h i | LMA/1/41152/00..* | |



| FOR FREE COUPLER PLUGS OR SOCKETS | | | |
|-----------------------------------|------|----------------------|--------------------|
| Shell Size | Code | Assembly Part Number | Polythene Cap Only |
| 1 | a b | LMA/1/04119/00..* | LMA/2/41181 |
| 2 | c d | LMA/1/04120/00..* | LMA/2/41182 |
| | e f | LMA/1/04121/00..* | |
| 3 | g | LMA/1/04122/00..* | LMA/2/41183 |
| | h i | LMA/1/04123/00..* | |



| FOR FIXED SQUARE FLANGE PLUGS OR SOCKETS | | |
|--|----------------------|--------------------|
| Shell Size | Assembly Part Number | Polythene Cap Only |
| 1 | LMA/1/41160/00..* | LMA/2/41181 |
| 2 | LMA/1/41161/00..* | LMA/2/41182 |
| 3 | LMA/1/41162/00..* | LMA/2/41183 |



| FOR FIXED ROUND FLANGE PLUGS OR SOCKETS | | |
|---|----------------------|--------------------|
| Shell Size | Assembly Part Number | Polythene Cap Only |
| 1 | LMA/1/41198/00..* | LMA/2/41181 |
| 2 | LMA/1/41199/00..* | LMA/2/41182 |
| 3 | LMA/1/41200/00..* | LMA/2/41183 |

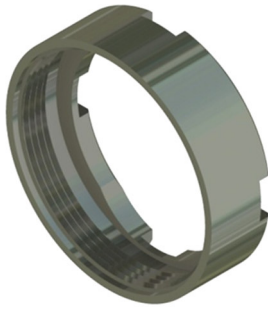
Note: All protective caps on this page are for use with brass connectors (coarse thread) only.

* Final figure of suffix must be added to the part number when ordering:

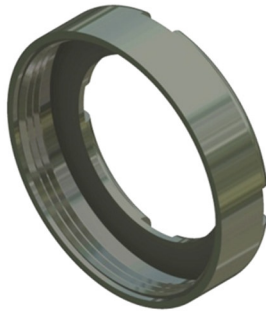
- 1 – LMG Range, cadmium olive drab plate
- 3 – LMF and LMG Range, clean finish
- 5 – LMF Range, cadmium plate and passivate

Other finishes available on request

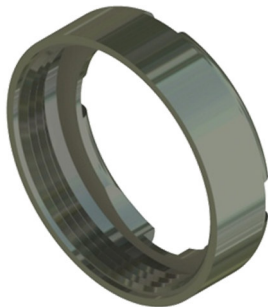
**LMF / LMG RANGE
ACCESSORIES
OUTLET NUTS**



| FOR USE WITH LMF & LMG CONNECTORS ON ALUMINIUM OR BRASS FREE UNITS, BRASS FREE COUPLERS & BRASS FIXED UNITS (SQUARE FLANGE) | | | |
|--|--------------------|-----------------|------------------------------------|
| Shell Size | Aluminium Part No. | Brass Part No. | Thread dia. x 26 T.P.I. B.S. 84 |
| 1 | LMA/2/07519/00* | LMA/2/07569/00* | 0.7969 |
| 2 | LMA/2/07520/00* | LMA/2/07570/00* | 1.0156 |
| 3 | LMA/2/07521/00* | LMA/2/07571/00* | 1.4062 |



| FOR USE WITH LMF ALUMINIUM CONNECTORS ONLY ON FREE COUPLERS & FIXED UNITS WITH OUTLET NUT | | |
|--|-----------------|------------------------------------|
| Shell Size | Part No. | Thread dia. x 26 T.P.I. B.S. 84 |
| 1 | LMA/2/40978/00* | 0.9687" |
| 2 | LMA/2/40980/00* | 1.1875" |
| 3 | LMA/2/40981/00* | 1.5625" |



| FOR USE WITH LMG CONNECTORS ONLY ON ALUMINIUM FREE COUPLERS & FIXED UNITS (ROUND FLANGE) | | | |
|---|--------------------|-----------------|------------------------------------|
| Shell Size | Aluminium Part No. | Brass Part No. | Thread dia. x 26 T.P.I. B.S. 84 |
| 1 | LMA/2/07531/00* | LMA/2/07157/00* | .8437" |
| 2 | LMA/2/07532/00* | LMA/2/07158/00* | 1.0625" |
| 3 | LMA/2/07533/00* | LMA/2/07159/00* | 1.4375" |

Note:

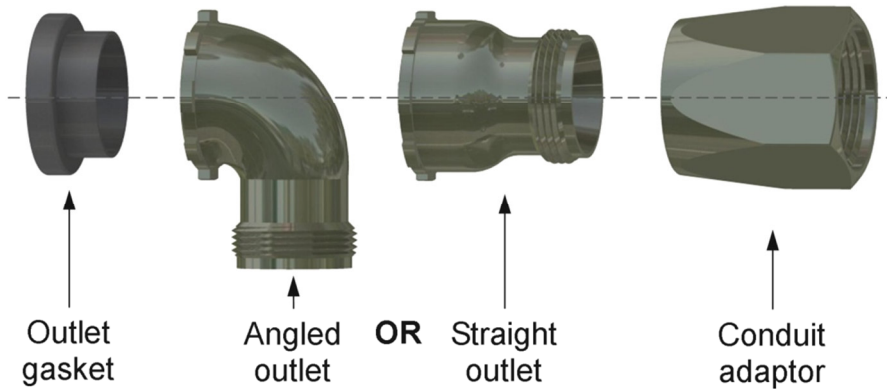
* Final figure of suffix must be added to the part number when ordering:

- 1 – LMG Range, cadmium olive drab plate
- 3 – LMF and LMG Range, clean finish
- 5 – LMF Range, cadmium plate and passivate

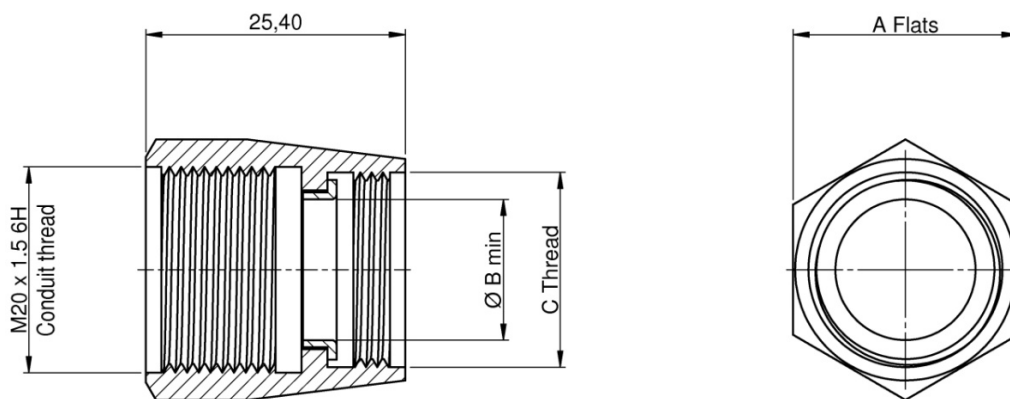
Other finishes available on request

**LMF / LMG RANGE
ACCESSORIES
CONDUIT ADAPTORS**

A limited range of brass conduit adaptors which provide the facility to terminate 20mm conduit to standard LMF or LMG connectors with straight or right angled outlets.



| ACCESSORY SET | | | | |
|---------------|-----------------|-----------------|---------------------|------|
| Shell Size | Cable dia. max. | Straight outlet | Right angled outlet | Code |
| 1 | 11.30 | LMA/1/80102/20* | LMA/1/80105/20 | b |
| 2 | 13.60 | LMA/1/80103/20* | LMA/1/80106/20 | e |
| 3 | 15.90 | LMA/1/80104/20* | LMA/1/80107/20' | g |



| CONDUIT ADAPTOR | | | | | |
|-----------------|-----------------|-------|--------|-----------------------------|------|
| Shell Size | Part No. | A | B min. | C Thread dia. x 26TPI BS 84 | Code |
| 1 | LMA/1/80099/00* | 22.00 | 11.30 | 0.6406" | b |
| 2 | LMA/1/80100/00* | 22.00 | 13.59 | 0.7344" | e |
| 3 | LMA/1/80101/00* | 25.0 | 15.87 | 0.8437" | g |

Note:

* Final figure of suffix must be added to the part number when ordering:

- 1 – LMG Range, cadmium olive drab plate
- 3 – LMF and LMG Range, clean finish
- 5 – LMF Range, cadmium plate and passivate

Other finishes available on request

**LMF / LMG RANGE
TOOLS****TOOLS REQUIRED FOR LOCKING CABLE ENTRY FITTINGS
AND FOR MOUNTING FIXED UNITS TO PANELS, ETC.**

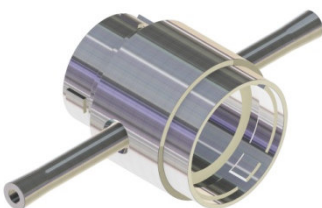
| COMPLETE TOOL KIT | |
|------------------------------------|-------------|
| Description | Part No. |
| Complete tool kit (not in case) | LMT/1/00270 |
| PART No. LMT/1/00270 comprises: | |
| Special spanner, shell size 1 | LMT/2/00574 |
| Special spanner, shell size 2 | LMT/2/00575 |
| Special spanner, shell size 3 | LMT/2/00576 |
| Tommy bar special spanner | LMT/2/00573 |
| Bodyholder shell size 1 | LMT/1/00261 |
| Bodyholder shell size 2 | LMT/1/00262 |
| Bodyholder shell size 3 | LMT/1/00263 |
| Double-ended spanner, shell size 1 | LMT/2/00564 |
| Double-ended spanner, shell size 2 | LMT/2/00565 |
| Double-ended spanner, shell size 3 | LMT/2/00566 |

**SPECIAL SPANNER (SHOWN WITH TOMMY BAR)**

Used on fixed units, including bulkheads, to facilitate tightening of panel locking rings.

**DOUBLE-ENDED SPANNER**

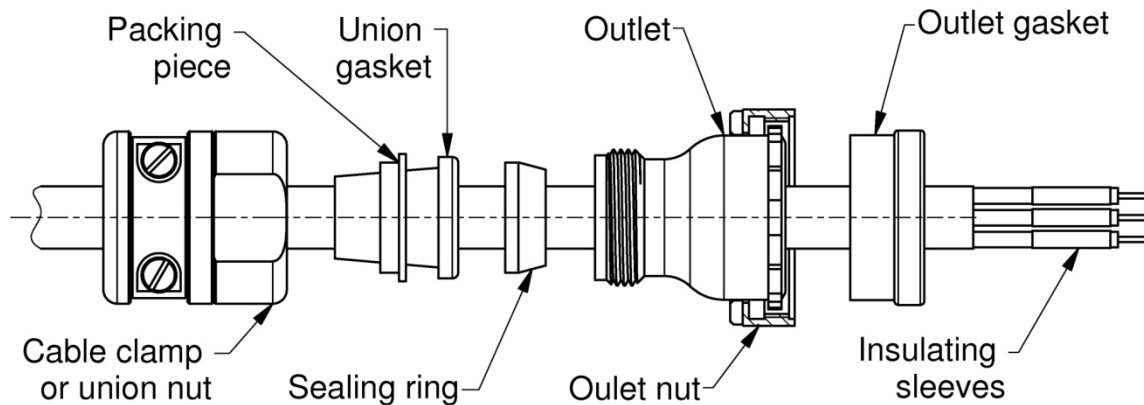
Used in conjunction with body holder to facilitate tightening of outlet nuts and panel locking rings.

**BODYHOLDER**

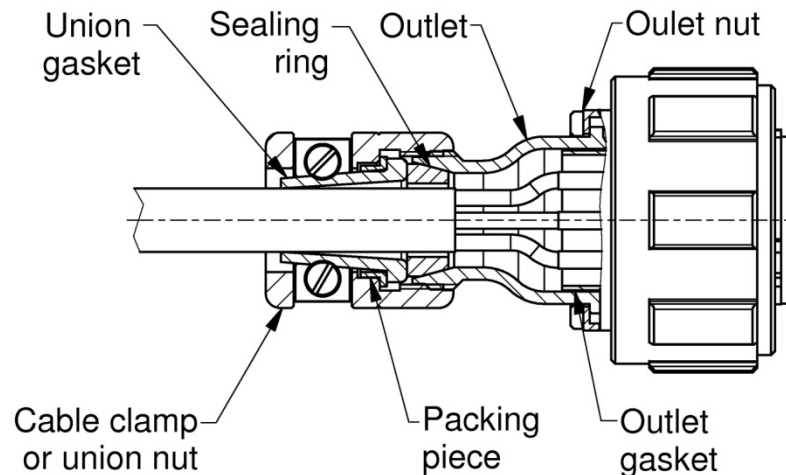
Used in conjunction with double-ended spanner - locates on front face of connectors.

**LMF / LMG RANGE
WIRING INSTRUCTION
MULTICORE CABLE TOTALLY UNSCREENED**

1. Strip back outer sheath.
Strip insulation from each conductor and tin dip.
Thread on to cable:- union nut / cable clamp, thrust ring (or packing piece), union gasket, outlet nut, outlet and outlet gasket.
Fit insulation sleeves to conductors.

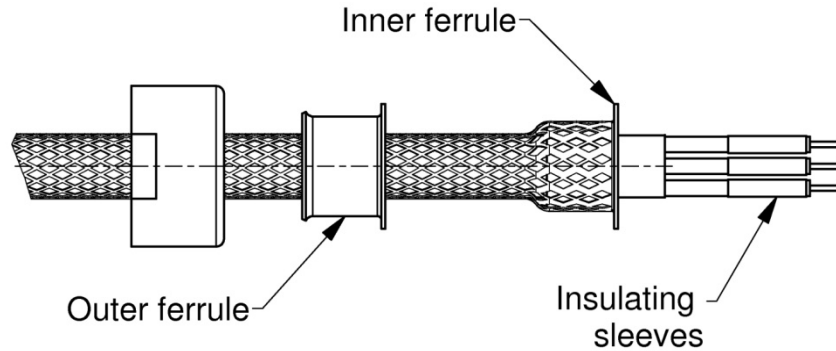


2. Solder conductors to connector contacts.
Slide insulation sleeves over solder joints.
Position outlet gasket and outlet at rear of connector and secure with outlet nut.
Slide union gasket into neck of outlet. Screw clamp on to outlet.
Secure union nut / cable clamp to cable by screwing down clamp jaw.

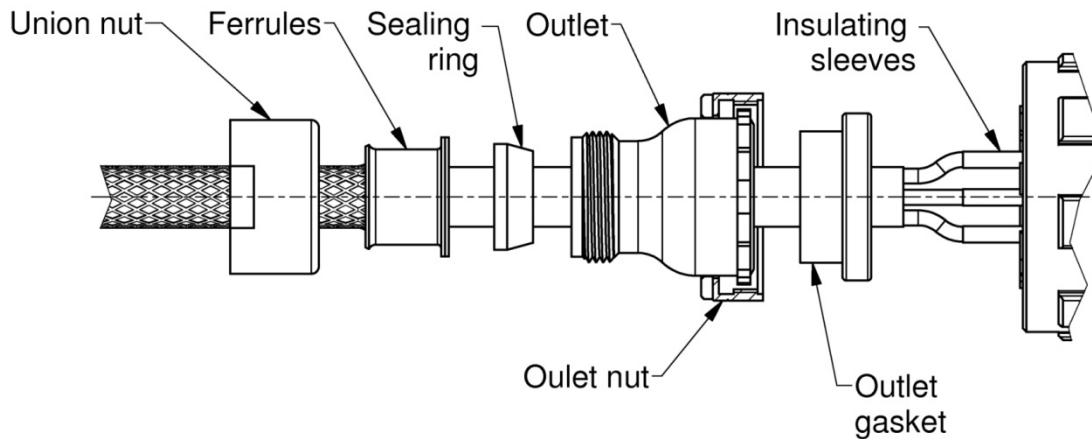


**LMF / LMG RANGE
WIRING INSTRUCTION****MULTICORE CABLE WITH OUTER COLLECTIVE SCREEN ONLY**

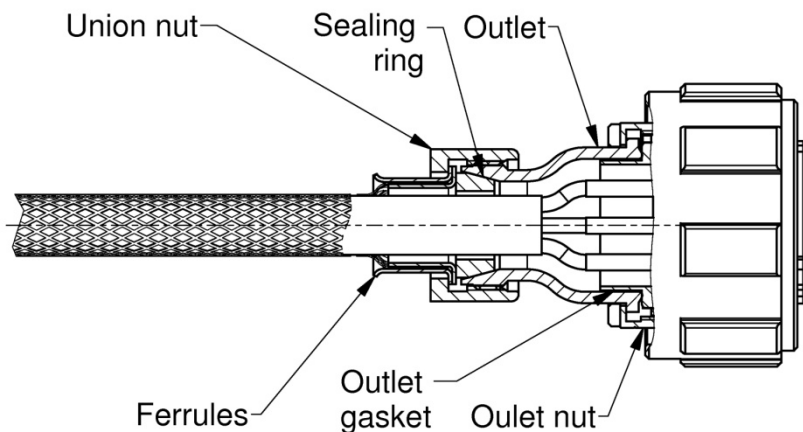
1. Strip back braid and sheath.
Strip insulation from conductors and tin dip.
Thread on union nut and outer ferrule.
Thread on inner ferrule and position under braid.
Fit insulating sleeves to each conductor.



2. Force outer ferrule over inner ferrule and braid.
Trim off any braid which may protrude between ferrule flanges.
Compress the braid back down cable.
Thread on sealing ring, outlet nut, outlet and outlet gasket.
Solder conductors to connector contacts and slide insulation sleeves over joints.



3. Position outlet gasket and outlet at rear of connector and secure with outlet nut.
Slide sealing ring into neck of outlet.
Pull forward ferrules and braid, secure with union nut.



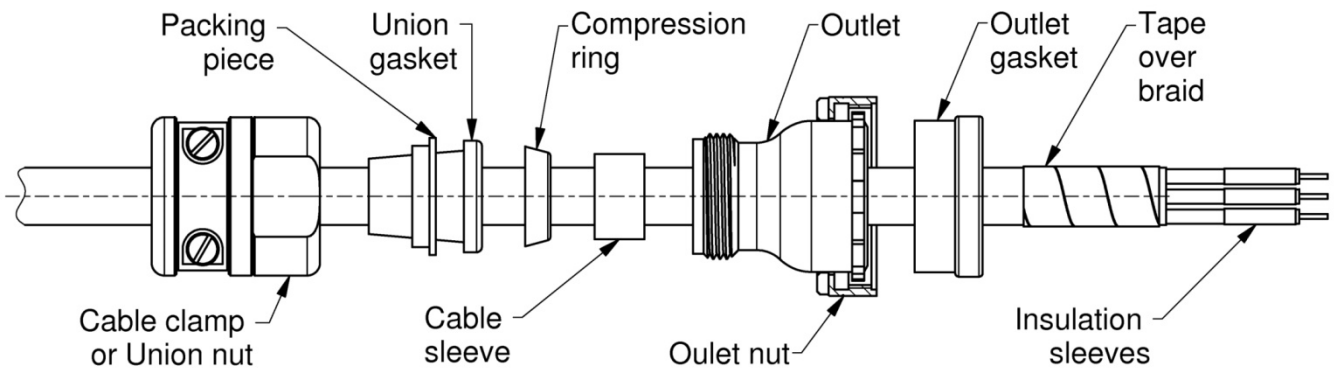
**LMF / LMG RANGE
WIRING INSTRUCTION**

MULTICORE CABLE WITH INNER COLLECTIVE SCREEN ONLY

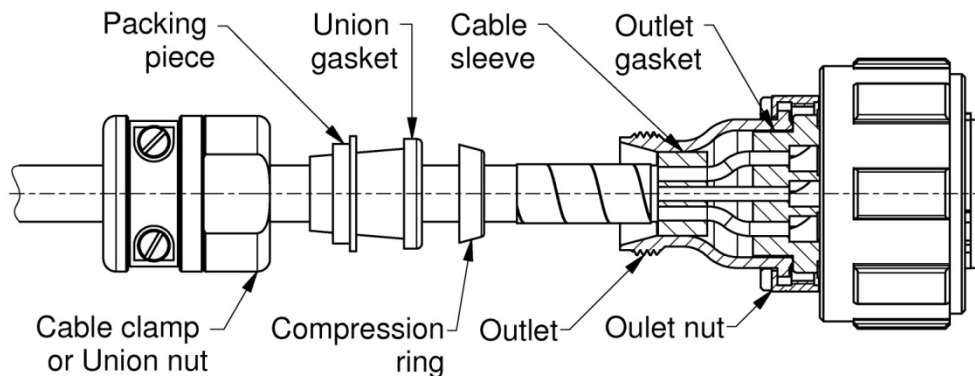
- Strip outer sheath and braid.
Thread on union nut / cable clamp, thrust ring (or packing piece), union gasket (see note), compression ring and cable sleeve. Comb out metal braid, fold back over sheath and tape down.
Strip insulation from conductors and tin dip.
Thread on outlet nut, outlet, and outlet gasket. Fit insulating sleeves to each conductor.

NOTE:

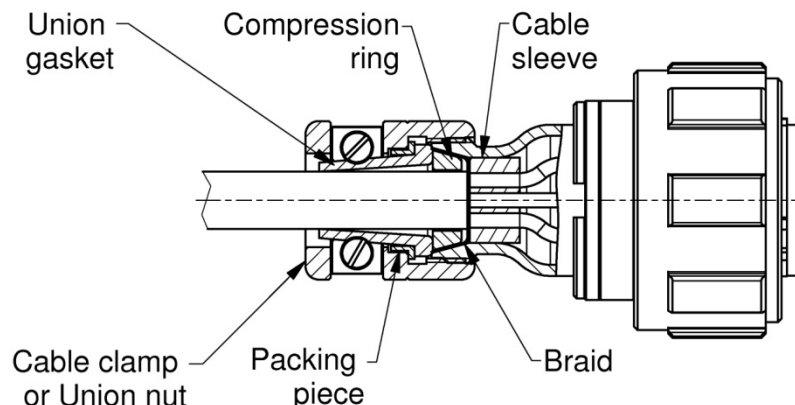
Union gasket requires to be a close fit to cable sheath. Synthetic rubber sleeve/s to be fitted to achieve a satisfactory fit.



- Solder conductors to connector contacts and slide insulating sleeves over soldered joints.
Position outlet gasket and outlet at rear of connector and secure with outlet nut.
Slide cable sleeve into neck of outlet.



- Remove tape from metal braid and fan out 90° to cable.
Position compression ring on end of outer sheath trapping braid between outlet and compressions ring.
Slide forward union gasket and thrust ring to rear of compression ring.
Trim off braid, to rear face of compression ring and screw union nut / cable clamp onto outlet.



LMF / LMG RANGE PRODUCT SAFETY INFORMATION

These notes are intended to be used in conjunction with the Product Catalogue and Product Specification. Products may be safely used in the applications for which they have been designed and within the specified rating and environments. If products are exposed to conditions outside the performance ratings or specified environments they may constitute a hazard. In particular it should be noted that:-

1. Material Content

Circular Connectors generally use metalwork parts made of brass, aluminium, phosphor-bronze or steel, which, dependant on the particular application, may be passivated and protected with cadmium or zinc plate – in conjunction with chromated or anodised surface finishes. The insulating materials can either be natural or synthetic rubber, together with plastic or glass-filled plastic moulded parts. Contact materials vary but are usually made of brass, phosphor-bronze, alumel or chromel.

2. Electric Shock, Burns and Fire

Hazard can occur if the product is used outside the specified parameters or if the product is damaged, wrongly wired, poorly assembled, poorly integrated into larger equipments, or contaminated with conductive fluids. Live circuit terminations must be protected and live circuits never broken by disconnecting products.

Hot spots may be created when resistance is increased due to damage or incorrect integration particularly soldering, or loose terminations. Overheating can cause breakdown of insulation, electric shock, burns or, ultimately, fire. In the event of fire noxious and/or toxic fumes may be released and, in these circumstances, any fire involving the product should be dealt with by personnel properly equipped. Connectors with exposed terminations or contacts should not be used on the current supply side of a circuit with exposed contacts on an unmated product. Before making a circuit live, the product and wiring should be checked to ensure there is no electrically conducting debris present. Circuit resistance checks should also be conducted before making the circuit live. Always ensure that connectors are assembled and wired by properly trained personnel.

3. Use, Transport and Storage of Products

Care must be exercised to avoid damage to any part of the products during transporting, storage or use. Abnormal transit or storage conditions and abuse during installation can give rise to damage. Products should not be used in a damaged condition.

Improper storage (particularly of damaged products) can give rise to additional hazards particularly corrosion. Attention is specifically drawn to the need for proper storage of products containing cadmium and you are advised to see the Guidance Note from the Health and safety Executive on Cadmium – Health and Safety Precautions.

4. Disposal of Products

Product should not be burnt.

SAFETY RULES

1. FOLLOW THE GUIDELINES GIVEN.
2. ALWAYS PROTECT LIVE CIRCUITS AND NEVER DISCONNECT A LIVE CONNECTOR.
3. NEVER USE A DAMAGED CONNECTOR.
4. NEVER BURN DISCARDED CONNECTORS.