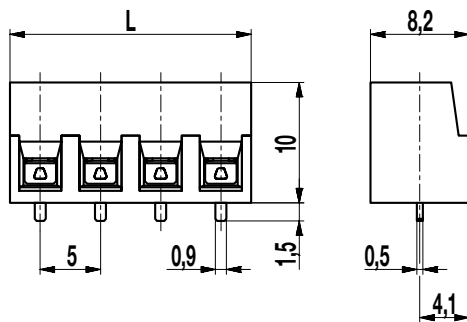
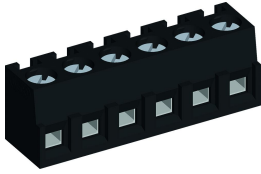


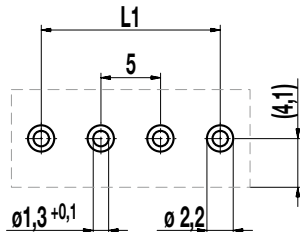
## PCB connector for THR

### 140-A-111-THR

Screw connection, short solder pins



### Recommended PCB Layout



L1 = (No. of poles - 1) x pitch  
Solder pad diameter:  $\varnothing$  2,2 mm  
Solder paste thickness: 0,15 - 0,2 mm

The PCB connector 140-A-111-THR with a pitch of 5 mm, designed for the soldering process in Through-Hole-Reflow technology, is available in 2- to 12-pole design.

The very short 1.5 mm solder pins, no longer protruding from the PC board, allow for double-sided mounting possibilities.

The terminal housing is made of heat-resistant material.  
The wire entrance is parallel to the PCB.  
The screws are captive.

### Part Numbers

No. of poles	140-A-111-THR	Length	PU
2	10.801.562	10,00	250
3	10.801.563	15,00	250
4	10.801.564	20,00	200
5	10.801.565	25,00	100
6	10.801.566	30,00	100

further number of poles on request

### General Information

Pitch	5 mm
No. of poles	2 - 12

### Technical Data

Clamping Range	<i>solid / flexible / AWG</i>		
	0,14 - 2,5 mm <sup>2</sup> / 0,14 - 1,5 mm <sup>2</sup> / 26 - 16 AWG		
Rated Cross Section	1,5 mm <sup>2</sup>		
Wire Stripping Length	6 mm $\pm$ 0,5 mm		
Overvoltage Category	III	III	II
Pollution Severity Level	3	2	2
Rated Voltage	200 V	320 V	500 V
Rated Impulse Voltage	4 kV	4 kV	4 kV
Rated Insulation Voltage	250 V accord. to EN 60998-1		
Rated Current	16 A		
Soldering process	Reflow solder		
Hole in PCB	$\varnothing$ 1,3 mm		
PCB thickness	1,6 mm		
Torque	0,5 Nm		

### Material

Moulding	PA HT, black, V-0
Comparative Tracking Index	CTI $\geq$ 600
Insulating Group	I
Temperature Range	-40°C up to 120°C; reflow solder temperature (Peak) max. 260°C (15-30 s)
Terminal body	Nickel plated brass
Pressure clamp	Tin plated copper alloy
Screw	M3; Zinc plated steel, blue passivated
Solder pin	0,9 x 0,5 mm; tin plated copper alloy

### Options / Accessories

- Consecutive numbering
- Special marking according to drawing
- Self-adhesive marking strip BST-5,00 [1]
- Pitch of 10 mm for larger clearance and creepage distances
- Tape-on-Reel on request
- Other solder pin lengths on request

[1] To be fitted after reflow soldering process