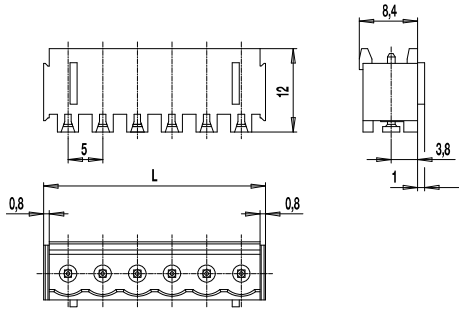
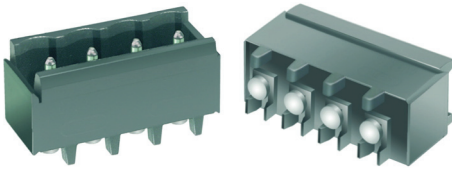
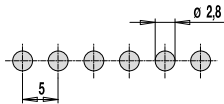


Pin strip for SMD 120-M-221-SMD

Plug-in direction vertical to PCB, with side walls



PCB Layout



Solder paste thickness: 0,15 - 0,2 mm
Solder pad diameter: \varnothing 2,8 mm

The PCB terminals for surface mounting comprise several types for reflow-soldering processes. Housings out of temperature resistant plastic material and solder pins in round shape with soldering foot form the pin strips of the series of 120-M-221-SMD. The pins are movable in vertical direction and this ensures plane positioning of the soldering feet on the soldering pads. Thus, 100% coplanarity is guaranteed. For the automatic assembling process, all pin strip versions are packed Tape-on-Reel and are equipped with high temperature resistant Pick Caps, which can comfortably be removed after the soldering process.

Part Numbers

No. of poles	120-M-221-SMD	Length	PU
2	40.806.352	12,00	200
3	40.806.353	17,00	200
4	40.806.354	22,00	100
5	40.806.355	27,00	100
6	40.806.356	32,00	100
8	40.806.358	42,00	50
10	40.806.360	52,00	50
12	40.806.362	62,00	50

further number of poles on request

General Information

Pitch	5 mm
No. of poles	2 - 12
Usable with	all plug connectors of series 120

Technical Data

Overvoltage Category	III	III	II
Pollution Severity Level	3	2	2
Rated Voltage	160 V	160 V	250 V
Rated Impulse Voltage	2,5 kV	2,5 kV	2,5 kV
Rated Insulation Voltage	130 V acc. to EN 60998-1		
Rated Current	12 A		
Soldering process	Reflow solder		

Material

Moulding	PA HT, black, V-0
Comparative Tracking Index	CTI 250
Insulating Group	IIIa
Temperature Range	-40°C up to 105°C; reflow solder temperature (Peak) max. 250°C (15-30 s)
Solder pin	\varnothing 1,1 mm (plug-in area); tin plated brass

Approvals

	Current	Voltage	Group	AWG	Nm
	15	300	B		
	10	300	D		
	15	300	B		
	10	300	D, E		

Options / Accessories

- Consecutive numbering
- Special marking according to drawing
- Self-adhesive marking strip BST-5,00 [1]

Part Numbers: Tape-on-Reel

No. of poles	120-M-221-SMD	Tape Width	Tape Height	PU
2	40.806.352.A00	32 mm	17,4 mm	225
3	40.806.353.A00	32 mm	17,4 mm	225
4	40.806.354.A00	56 mm	17,4 mm	225
5	40.806.355.A00	56 mm	17,4 mm	225
6	40.806.356.A00	56 mm	17,4 mm	225
7	40.806.357.A00	56 mm	17,4 mm	225

further number of poles on request

[1] To be fitted after reflow soldering process