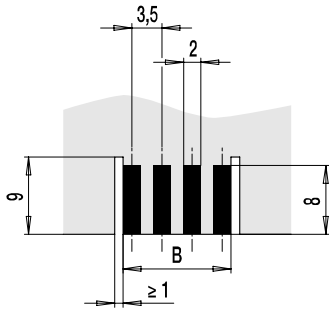
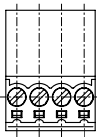
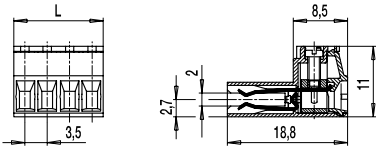
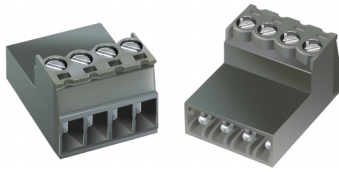


Plug connector

110-AP-211

Screw connection, direct contact to PCB



$B = (\text{Number of poles} \times 3.5) - 1.5$

The plug connector 110-AP-211 as direct connection to PC boards with a pitch of 3,5 mm is available in 2- to 12-pole design.

Due to the small pitch, the plug connector is particularly suitable for confined spaces.

The high-quality elevator system guarantees reliable connection of all conductor types.

Slots corresponding with the housing side walls or the PC board width determine the correct plug connector position on the conductor paths. The board design determines whether the contacting is single- or double-sided.

Slots between the plug connections not only to increase the creepage distances in the housing but also serve as receptacle for coding keys.

Part Numbers

No. of poles	110-AP-211	Length	PU
2	10.842.072	7,00	200
3	10.842.073	10,50	200
4	10.842.074	14,00	100
5	10.842.075	17,50	100
6	10.842.076	21,00	100
7	10.842.077	24,50	50
8	10.842.078	28,00	50
9	10.842.079	31,50	50
10	10.842.080	35,00	50
11	10.842.081	38,50	50
12	10.842.082	42,00	50

further number of poles on request

General Information

Pitch	3,5 mm
No. of poles	2 - 12
Areas of application	Telecommunication technology, house telephones, intercoms

Technical Data

Clamping Range	<i>solid / flexible / AWG</i>		
	0,14 - 1,5 mm ² / 0,14 - 1,5 mm ² / 30 - 16 AWG		
Rated Cross Section	1 mm ²		
Wire Stripping Length	6,5 mm ± 0,5 mm		
Overvoltage Category	III	III	II
Pollution Severity Level	3	2	2
Rated Voltage	160 V	160 V	320 V
Rated Impulse Voltage	2,5 kV	2,5 kV	2,5 kV
Rated Insulation Voltage	130 V acc. to EN 60998-1		
Rated Current	3 A for one side PCB contact 6 A for two side PCB contact		
PCB thickness	1,4 - 1,8 mm		
Torque	0,2 Nm		

Material

Moulding	PA, grey, V-0
Comparative Tracking Index	CTI ≥ 600
Insulating Group	I
Temperature Range	-40°C up to 100°C
Contact elements	Copper alloy, tin plated
Screw	M2; copper alloy, tin plated

Approvals

	Current	Voltage	Group	AWG	Nm
	7	150	B	30 - 16	0,23

Options / Accessories

- Consecutive numbering
- Special marking according to drawing
- Self-adhesive marking strip BST-3,50
- Coding keys 110-AP, Part-No.: 10.496.028
- Factory-assembled coding keys on request