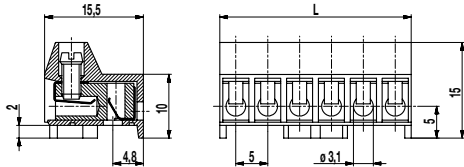
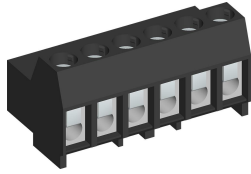


Plug connector 970-FBW-FU-DS

Screw connection, pluggable from the bottom, with supporting ribs



The plug connector 970-FBW-FU-DS with a pitch of 5 mm is available in 2- to 12-pole design and can be mounted side-by-side without pole loss.

This connector can be plugged onto 971-SLR or 971-SLR-THR pin strips with pins of \varnothing 1.3 mm. The bottom feet ensure secure footing of the component on the PCB.

The screws are secured against self-loosening.

Upon request, the 970-FBW-FU-DS series is also available with additional ribs on the wire entrance side, which increase clearance and creepage distances.

Part Numbers

No. of poles	970-FBW-FU-DS	Length	PU
2	40.873.192	10,00	200
3	40.873.193	15,00	200
4	40.873.194	20,00	100
6	40.873.196	30,00	50
8	40.873.198	40,00	50

further number of poles on request

General Information

Pitch	5 mm
No. of poles	2 -12
Usable with	pin strip 971-SLR, 971-SLR-THR

Technical Data

Clamping Range	<i>solid / flexible / AWG</i>		
<i>without wire protector</i>	1 - 6 mm ² / 1 - 4 mm ² / 16 - 10 AWG		
<i>with wire protector</i>	0,75 - 4 mm ² / 0,75 - 2,5 mm ² / 18 - 12 AWG		
Rated Cross Section	2,5 mm ²		
Wire Stripping Length	5,5 mm \pm 0,5 mm		
Overvoltage Category	III	III	II
Pollution Severity Level	3	2	2
Rated Voltage	250 V	320 V	630 V
Rated Impulse Voltage	4 kV	4 kV	4 kV
Rated Insulation Voltage	250 V acc. to EN 60998-1		
Rated Current	6 A		
Torque	0,5 Nm		

Material

Moulding	PA, grey, V-0
Comparative Tracking Index	CTI \geq 600
Insulating Group	I
Temperature Range	-40°C up to 100°C
Terminal body	Tin plated brass
Screw	M3; zinc plated steel, blue passivated
Wire protector	Tin plated tin bronze
Spring	Stainless strip steel

Options / Accessories

- Consecutive numbering
- Special marking according to drawing
- Self-adhesive marking strip BST-5,00
- Pitch of 10 mm for larger clearance and creepage distances
- Version with extended wire entrance
- Double wire protector as bridge
- Without wire protector