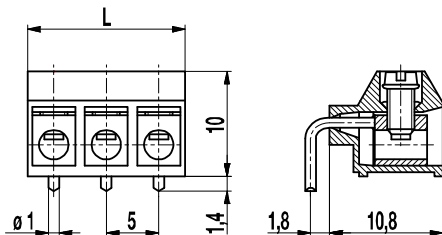


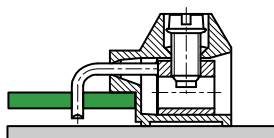
PCB connector

950-LH(-DS)

Screw connection, with angled solder pin, pottable



Example of application



By placing the circuit board below the point where the solder pins leaves the housing, a reduction of the effective height can be achieved. Longer terminal pins and another position of the bend upon request.

The 950-LH series PCB screw connector with a pitch of 5 mm features an angled solder pin and is particularly suited for potting printed circuits. For such potting applications, the solder pin is sealed at the housing opening against seeping casting resin. This PCB screw connector with a pitch of 5 mm is available in 2- to 12-pole design and can be mounted side-by-side without pole loss.

Wire protection in DS-design reliably prevents damage to stranded wires by the screw.

The wire entrance is parallel to the PCB whereas the casting resin surface is vertical to the wire entrance. Version 951-LH alternatively provides wire entrance vertical to the PCB.

Part Numbers

No. of poles	950-LH	950-LH-DS	Length	Pcs
2	10.871.452	20.871.452	10,00	250
3	10.871.453	20.871.453	15,00	250
4	10.871.454	20.871.454	20,00	200
5	10.871.455	20.871.455	25,00	100
6	10.871.456	20.871.456	30,00	100
7	10.871.457	20.871.457	35,00	100
8	10.871.458	20.871.458	40,00	100
9	10.871.459	20.871.459	45,00	100
10	10.871.460	20.871.460	50,00	100
11	10.871.461	20.871.461	55,00	100
12	10.871.462	20.871.462	60,00	100

General Information

Pitch	5 mm
No. of poles	2 - 12

Technical Data

Clamping Range	<i>solid / flexible / AWG</i>		
<i>without wire protector</i>	0,75 - 2,5 mm ² / 0,75 - 2,5 mm ² / 18 - 14 AWG		
<i>with wire protector</i>	0,34 - 2,5 mm ² / 0,34 - 2,5 mm ² / 22 - 14 AWG		
Rated Cross Section	1,5 mm ²		
Wire Stripping Length	6 mm ± 0,5 mm		
Overvoltage Category	III	III	II
Pollution Severity Level	3	2	2
Rated Voltage	160 V	160 V	320 V
Rated Impulse Voltage	2,5 kV	2,5 kV	2,5 kV
Rated Insulation Voltage	130 V acc. to EN 60998-1		
Rated Current	17,5 A		
Hole in PCB	ø 1,3 mm		
Torque	0,4 Nm		

Material

Moulding	PA, grey, V-0
Comparative Tracking Index	CTI ≥ 600
Insulating Group	I
Temperature Range	-40°C up to 100°C
Terminal body	Tin plated brass
Screw	M2,6; zinc plated steel, blue passivated
Solder pin	ø 1 mm; tin plated copper
Wire protector	Tin plated tin bronze

Approvals

	Current	Voltage	Group	AWG	Nm
	15	300	B	26 - 14	0,4
	15	300	B	26 - 14	0,4
	Current	Voltage	mm ²		
	17,5	250	1,5		

Options / Accessories

- Consecutive numbering
- Special marking according to drawing
- Self-adhesive marking strip BST-5,00
- Pitch of 10 mm for larger clearance and creepage distance
- Other P.C. pin length and bending positions on request