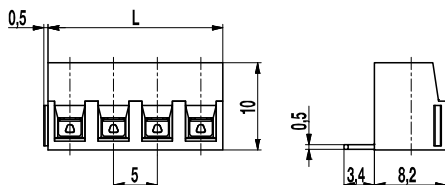
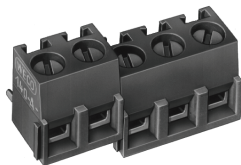


PCB connector

140-A-121

Screw connection, wire entrance vertical to PCB, interlocking



The PCB connector 140-A-121 with lift system is the horizontal version of 140-A-111 with a pitch of 5 mm and available with 2 to 24 poles.

Lateral latching elements on the housing allow to lock the PCB connector to longer terminal rows without pole loss. The wire entrance is vertical to the PCB. The screws are captive.

Part Numbers

No. of poles	140-A-121	Length	Pcs
2	20.801.402	10,00	250
3	20.801.403	15,00	250
4	20.801.404	20,00	100
5	20.801.405	25,00	100
6	20.801.406	30,00	100
7	20.801.407	35,00	100
8	20.801.408	40,00	100
9	20.801.409	45,00	100
10	20.801.410	50,00	100
11	20.801.411	55,00	100
12	20.801.412	60,00	100
13	20.801.413	65,00	100
14	20.801.414	70,00	100
15	20.801.415	75,00	100
16	20.801.416	80,00	100
17	20.801.417	85,00	100
18	20.801.418	90,00	100
19	20.801.419	95,00	100
20	20.801.420	100,00	100
21	20.801.421	105,00	100
22	20.801.422	110,00	100
23	20.801.423	115,00	100
24	20.801.424	120,00	100

General Information

Pitch	5 mm
No. of poles	2 - 24

Technical Data

Clamping Range	<i>solid / flexible / AWG</i> 0,14 - 2,5 mm ² / 0,14 - 1,5 mm ² / 26 - 14 AWG		
Rated Cross Section	1,5 mm ²		
Wire Stripping Length	6 mm ± 0,5 mm		
Overvoltage Category	III	III	II
Pollution Severity Level	3	2	2
Rated Voltage	200 V	320 V	500 V
Rated Impulse Voltage	4 kV	4 kV	4 kV
Rated Insulation Voltage	250 V acc. to EN 60998-1		
Rated Current	16 A		
Hole in PCB	ø 1,2 mm		
Torque	0,5 Nm		

Material

Moulding	PA, grey, V-0
Comparative Tracking Index	CTI ≥ 600
Insulating Group	I
Temperature Range	-40°C up to 100°C
Terminal body	Nickel plated brass
Pressure clamp	Tin plated tin bronze
Screw	M3; zinc plated steel, blue passivated
Solder pin	0,9 x 0,5 mm; tin plated tin bronze

Approvals

	Current	Voltage	Group	AWG	Nm
	10 [1]	300	B, D	30 - 14	0,51
	15	300	B	30 - 14	0,51

[1] 20 A max for factory-wiring applications only

Options / Accessories

- Consecutive numbering
- Special marking according to drawing
- Self-adhesive marking strip BST-5,00
- Pitch of 10 mm for larger clearance and creepage distances