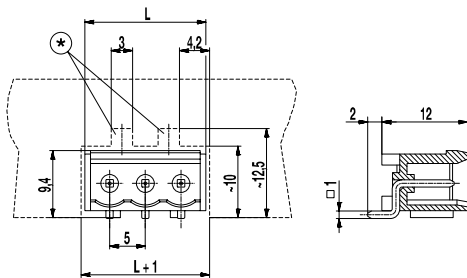
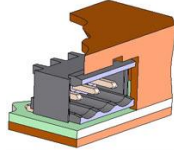
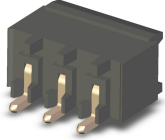
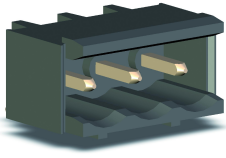


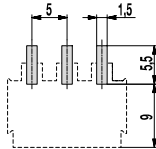
Pin strip for SMD 120-M-211-SMD

Plug-in direction parallel to PCB, with side walls



(*) Please plan for two gaps in the measures of 3 x 2.5 mm in the cut-out of the control panel for the snap-in device of the counterpart

PCB Layout



Solder paste thickness: 0.2 mm

L-shape exposed leads confer an extremely reliable retention force to PCB. This characteristic allows reliable soldering to PCB approaching zero defects for this characteristic and its effects. The top surface of the connector ensures automated Pick&Place-ability for both odd and even pole versions.

Material will handle reflow temperatures well without deforming or melting. Product shall be mounted on PCB to expose connector entry in the cut-off window of the metal or plastic enclosure. This installation mode prevents vertical peel-off stress against the L-shape solder joints during plug-in installation test. Standoffs underneath the molding ensure that connector housing keeps its horizontal position relative to PCB plane.

Packed in magazines, this genuine SMD terminal is suitable for the automatic assembly.

Part Numbers

No. of poles	120-M-211-SMD	Length	PU
2	30.806.352	12,00	774
3	30.806.353	17,00	540
4	30.806.354	22,00	414
5	30.806.355	27,00	342
6	30.806.356	32,00	288
8	30.806.358	42,00	216

further number of poles on request

General Information

Pitch	5 mm
No. of poles	2 - 12
Usable with	all plug connectors of series 120

Technical Data

Overvoltage Category	III	III	II
Pollution Severity Level	3	2	2
Rated Voltage	250 V	320 V	630 V
Rated Impulse Voltage	4 kV	4 kV	4 kV
Rated Insulation Voltage	250 V acc. to EN 60998-1		
Rated Current	12 A		
Soldering process	Reflow solder		

Material

Moulding	PA HT, black, V-0
Comparative Tracking Index	CTI ≥ 600
Insulating Group	I
Temperature Range	-40°C up to 120°C; reflow solder temperature (Peak) max. 260°C (15-30 s)
Solder pin	1,0 x 1,0 mm; tin plated brass

Approvals

	Current	Voltage	Group	AWG	Nm
	15	300	B		
	10	300	D, E		
	15	300	B		
	10	300	D, E		

Options / Accessories

- Consecutive numbering
- Special marking according to drawing
- Self-adhesive marking strip BST-5,00 [1]
- Tape-on-Reel on request

Part Numbers: Tape-on-Reel

No. of poles	120-M-211-SMD	Tape Width	Tape Height	PU
2	30.806.352.A00	24	10,4	375
3	30.806.353.A00	44	10,4	375
4	30.806.354.A00	44	10,4	375
5	30.806.355.A00	44	10,4	375

[1] To be fitted after reflow soldering process