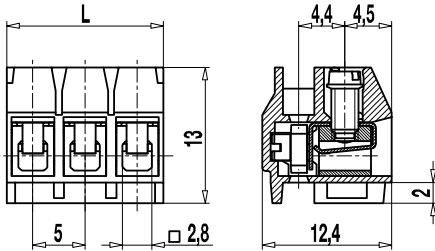


Plug connector

958-FL-DS

Screw connection, large conductor space



The PCB plug connector 958-FL-DS with a pitch of 5 mm is available in 2- to 8-pole design and can be plugged side-by-side on a pin strip without pole loss. The terminal space is of rectangular design. The rectangular shape offers ample space for the wire insertion of stranded wires with a maximum cross-section of 2,5 mm². This special terminal body can be used for all versions of the comprehensive 950-F... series.

This plug connector is designed to plug on pin strips of series 971 both from the top and the bottom. When using pin strips with extra-long pins (available upon request), two plug connectors can be pushed one on top of the other (stacked) thus achieving a parallel connection.

The use of these plug connectors offer a great variety of other benefits, such as easy disconnection for service purposes, decentralized component production or simply easy connection in confined space.

Part Numbers

No. of poles	958-FL-DS	Length	Pcs
2	40.871.732	10,00	250
3	40.871.733	15,00	250
4	40.871.734	20,00	250
5	40.871.735	25,00	100
6	40.871.736	30,00	100
7	40.871.737	35,00	100
8	40.871.738	40,00	100

further number of poles on request

General Information

Pitch	5 mm
No. of poles	2 - 8
Usable with	pin strips of series 971



Technical Data

Clamping Range	<i>solid / flexible / AWG</i> 0,34 - 2,5 mm ² / 0,34 - 2,5 mm ² / 22 - 14 AWG		
Rated Cross Section	1,5 mm ²		
Wire Stripping Length	6 mm ± 0,5 mm		
Overvoltage Category	III	III	II
Pollution Severity Level	3	3	2
Rated Voltage	320 V	320 V	630 V
Rated Impulse Voltage	4 kV	4 kV	4 kV
Rated Insulation Voltage	250 V acc. to EN 60998-1		
Rated Current	6 A		
Torque	0,4 Nm		
Other specifications	By use with pins LST-1,3: III-3-160V-2,5 kV		

Material

Moulding	PA, grey, V-0
Comparative Tracking Index	CTI ≥ 600
Insulating Group	I
Temperature Range	-40°C up to 100°C
Terminal body	Nickel plated brass
Screw	M2,6; zinc plated steel, blue passivated
Wire protector	Tin plated tin bronze
Spring	Tin plated tin bronze

Approvals

	Current	Voltage	Group	AWG	Nm
	10	300	B	26 - 14	0,4
	10	300	B	26 - 14	0,4

Options / Accessories

- Consecutive numbering
- Special marking according to drawing
- Self-adhesive marking strip BST-5,00