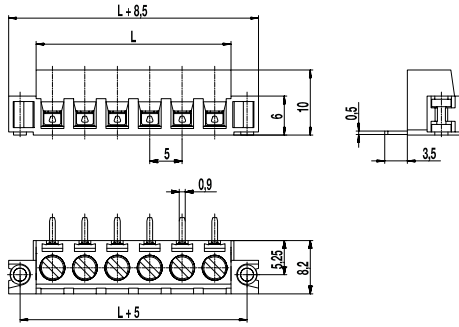
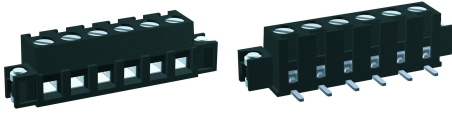


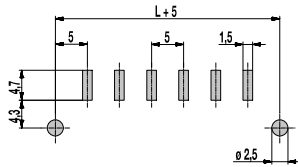
PCB connector for SMD

140-A-126-SMD

Screw connection, with solder flanges



PCB Layout



Solder paste thickness: 0,2 mm

The 2 to 8 pole terminal 140-A-126-SMD with a pitch of 5 mm has a screw connection with elevator clamping system and is equipped with M3 captive screws. The wire clamp and soldering tag are manufactured as a single unit and permanently engaged in the casing.

Soldering cylinders on either side of the housing are movable in vertical direction (floating anchors), and thereby they obtain 100% coplanarity between solder pins and soldering cylinders. They are transferred more to the front in comparison to the connector centre in order to keep the retaining strength, where the wires are connected. Thus, the force, acting on the solder pins, is reduced in a very important way.

This article is only available in bar magazines or in Tape-on-Reel. When delivered in Tape-on-Reel, this product is equipped with a Pick Discs that can be easily removed after the soldering process.

Part Numbers

No. of poles	140-A-126-SMD	Length	PU
2	20.801.632	10,00	784
3	20.801.633	15,00	616
4	20.801.634	20,00	504
5	20.801.635	25,00	420
6	20.801.636	30,00	364
7	20.801.637	35,00	336
8	20.801.638	40,00	280

General Information

Pitch	5 mm
No. of poles	2 - 8
Areas of application	Systems for measurement and control

Technical Data

Clamping Range	<i>solid / flexible / AWG</i>		
	0,14 - 2,5 mm ² / 0,14 - 1,5 mm ² / 26 - 16 AWG		
Rated Cross Section	1,5 mm ²		
Wire Stripping Length	6 mm ± 0,5 mm		
Overvoltage Category	III	III	II
Pollution Severity Level	3	2	2
Rated Voltage	200 V	320 V	500 V
Rated Impulse Voltage	4 kV	4 kV	4 kV
Rated Insulation Voltage	250 V acc. to EN 60998-1		
Rated Current	16 A		
Soldering process	Reflow solder		
Torque	0,5 Nm		

Material

Moulding	PA HT, black, V-0
Comparative Tracking Index	CTI ≥ 600
Insulating Group	I
Temperature Range	-40°C up to 120°C; reflow solder temperature (Peak) max. 260°C (15-30 s)
Terminal body	Nickel plated brass
Pressure clamp	Tin plated tin bronze
Screw	M3; zinc plated steel, blue passivated
Solder pin	0,9 x 0,5 mm; tin plated tin bronze
Solder cylinder	Tin plated brass

Approvals

	Current	Voltage	Group	AWG	Nm
	10 [1]	300	B, D	30 - 14	0,51
	15	300	B	30 - 14	0,51

Options / Accessories

- Consecutive numbering
- Special marking according to drawing
- Self-adhesive marking strip BST-5,00 [2]

Part Numbers: Tape-on-Reel

No. of poles	140-A-126-SMD	Tape Width	Tape Height	PU
2	20.801.632.A00	32 mm	13 mm	375
3	20.801.633.A00	56 mm	13 mm	375
4	20.801.634.A00	56 mm	13 mm	375
5	20.801.635.A00	56 mm	13 mm	375
6	20.801.636.A00	56 mm	13 mm	375

further number of poles on request

- [1] 20 A max for factory-wiring applications only
 [2] To be fitted after reflow soldering process