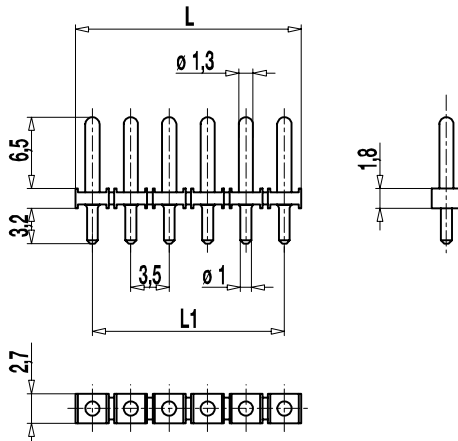
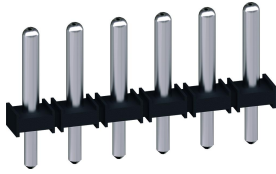


Pin strip for THR

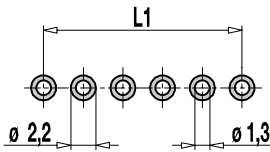
931-SLR-THR

Soldering area \varnothing 1 mm; plug-in area \varnothing 1,3 mm



$L1 = (\text{No. of poles} - 1) \times \text{pitch}$

PCB Layout



Solder paste thickness: 0,15 - 0,2 mm
Solder pad diameter: \varnothing 2,2 mm

931-SLR-THR is a pin strip with a pitch of 3,5 mm for the application in a reflow soldering process. The high temperature resistant plastic housing has a very high CTI value and is equipped with spacers, so-called stand-offs, which ensure a better hot-air circulation during the reflow soldering process in the convection oven. Beyond this, they assure an improved optical control of the solder joints.

The pin strips of the series 931-SLR-THR comes with a stepped pin, \varnothing 1,3 mm in the plug-in area and \varnothing 1 mm in the soldering area.

For the automatic assembling all pin strips of this series are packed in Tape-on-Reel and equipped with high temperature resistant Pick Caps, which can easily be removed after the soldering process.

Part Numbers

No. of poles	931-SLR-THR	Length	PU
2	12.893.721	6,50	1000
3	13.893.721	10,00	1000
4	14.893.721	13,50	500
5	15.893.721	17,00	500
6	16.893.721	20,50	500
8	18.893.721	27,50	250
10	20.893.721	34,50	200
12	22.893.721	41,50	200
16	26.893.721	55,50	200

further number of poles on request

General Information

Pitch	3,5 mm
No. of poles	2 - 16
Usable with	plug connector 938-FLDS
Additional Information	Also, please take into consideration the pin strips 931-SLR-SMD-1,3 in genuine surface mount technology.

Technical Data

Overvoltage Category	III	III	II
Pollution Severity Level	3	2	2
Rated Voltage	160 V	160 V	320 V
Rated Impulse Voltage	2,5 kV	2,5 kV	2,5 kV
Rated Insulation Voltage	130 V acc. to EN 60998-1		
Rated Current	6 A		
Soldering process	Wave solder & reflow solder		
Hole in PCB	\varnothing 1,3 mm		
PCB thickness	Wave solder max. 1,6 mm; reflow solder 1,6 - 3,2 mm		

Material

Moulding	PA HT, black, V-0
Comparative Tracking Index	CTI \geq 600
Insulating Group	I
Temperature Range	-40°C up to 120°C; reflow solder temperature (Peak) max. 260°C (15-30 s)
Solder pin	\varnothing 1,3 mm (plug-in area) / \varnothing 1,0 mm (soldering area); tin plated brass

Approvals

	Current	Voltage	Group	AWG	Nm
	6	150	B		
	6	300	D		
	6	150	B		
	6	300	D		

Options / Accessories

- Other plug pin lengths on request
- Other solder pin surfaces on request

Part Numbers: Tape-on-Reel

No. of poles	931-SLR-THR	Tape Width	Tape Height	PU
3	13.893.721.A00	32 mm	14,6 mm	500
4	14.893.721.A00	32 mm	14,6 mm	500
5	15.893.721.A00	32 mm	14,6 mm	500
6	16.893.721.A00	56 mm	14,6 mm	500
7	17.893.721.A00	56 mm	14,6 mm	500
8	18.893.721.A00	56 mm	14,6 mm	500
9	19.893.721.A00	56 mm	14,6 mm	500
10	20.893.721.A00	56 mm	14,6 mm	500
11	21.893.721.A00	56 mm	14,6 mm	500
12	22.893.721.A00	72 mm	14,9 mm	500
13	23.893.721.A00	72 mm	14,9 mm	500
14	24.893.721.A00	72 mm	14,9 mm	500

further number of poles on request