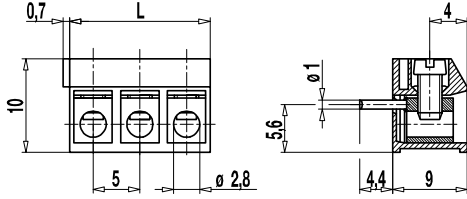


## PCB connector

### 951-THG(-DS)

Screw connection, wire entrance vertical to PCB, extended insertion length, interlocking



On version 951-THG(-DS) the copper solder pin is welded on top of the socket bore which expands the insertion length to series 950 socket depth and allows to use extra-long solder pins.

Wire protection in DS-design reliably prevents damage to stranded wires by the screw.

Lateral latching elements allow to link this type of screw connector with terminal strips of any length.

#### Part Numbers

No. of poles	951-THG	951-THG-DS	Length	PU
2	10.871.622	20.871.622	10,00	250
3	10.871.623	20.871.623	15,00	250

#### General Information

Pitch	5 mm
No. of poles	2 + 3

#### Technical Data

Clamping Range	<i>solid / flexible / AWG</i>		
	<i>without wire protector</i> 0,75 - 4 mm <sup>2</sup> / 0,75 - 2,5 mm <sup>2</sup> / 18 - 12 AWG		
	<i>with wire protector</i> 0,34 - 2,5 mm <sup>2</sup> / 0,34 - 2,5 mm <sup>2</sup> / 22 - 14 AWG		
Rated Cross Section	1,5 mm <sup>2</sup>		
Wire Stripping Length	6 mm ± 0,5 mm		
Overvoltage Category	III	III	II
Pollution Severity Level	3	2	II
Rated Voltage	160 V	160 V	320 V
Rated Impulse Voltage	2,5 kV	2,5 kV	2,5 kV
Rated Insulation Voltage	130 V acc. to EN 60998-1		
Rated Current	17,5 A		
Hole in PCB	ø 1,3 mm		
Torque	0,4 Nm		

#### Material

Moulding	PA, grey, V-0
Comparative Tracking Index	CTI ≥ 600
Insulating Group	I
Temperature Range	-40°C up to 100°C
Terminal body	Tin plated brass
Screw	M2,6; zinc plated steel, blue passivated
Solder pin	ø 1 mm; tin plated copper
Wire protector	Tin plated tin bronze

#### Approvals

	Current	Voltage	Group	AWG	Nm
	15	300	B	26 - 14	0,4
	15	300	B	26 - 14	0,4
	Current	Voltage	mm <sup>2</sup>		
	17,5	250	1,5		

#### Options / Accessories

- Consecutive numbering
- Special marking according to drawing
- Self-adhesive marking strip BST-5,00
- Longer solder pins up to 75 mm
- Up to 8 poles