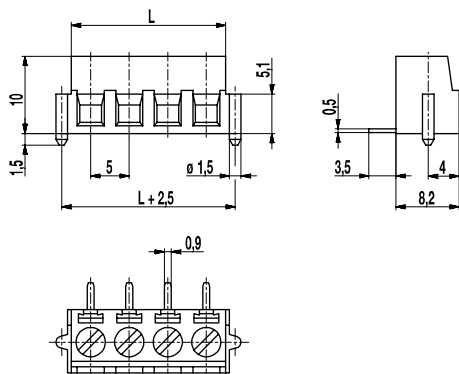
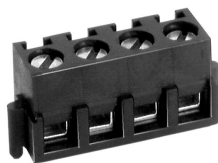
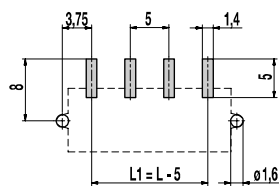


PCB connector for SMD 140-A-SMD

Screw connection, with anti-twist peg



PCB Layout



Solder paste thickness: 0,2 mm

The 2 to 8 pole terminal 140-A-SMD with a pitch of 5 mm has a screw connection with elevator clamping system and is equipped with M3 captive screws. The wire clamp and soldering tag are manufactured as a single unit and permanently engaged in the housing. The solder pins are exactly aligned parallel to the printed circuit board in order to create a coplanar connection after the reflow soldering process.

The moulding is made of heat resistant thermoplastic material and equipped with plastic pegs on both sides to prevent twisting.

This article is only available in bar magazines or in Tape-on-Reel. When delivered in Tape-on-Reel, this product is equipped with a Pick Discs that can be easily removed after the soldering process.

Part Numbers

No. of poles	140-A-SMD	Length	PU
2	10.801.602	10,00	1036
3	10.801.603	15,00	756
4	10.801.604	20,00	588
5	10.801.605	25,00	504
6	10.801.606	30,00	420
7	10.801.607	35,00	364
8	10.801.608	40,00	308

General Information

Pitch	5 mm
No. of poles	2 - 8

Technical Data

Clamping Range	<i>solid / flexible / AWG</i>		
	0,14 - 2,5 mm ² / 0,14 - 1,5 mm ² / 26 - 16 AWG		
Rated Cross Section	1,5 mm ²		
Wire Stripping Length	6 mm \pm 0,5 mm		
Overvoltage Category	III	III	II
Pollution Severity Level	3	2	2
Rated Voltage	200 V	320 V	500 V
Rated Impulse Voltage	4 kV	4 kV	4 kV
Rated Insulation Voltage	250 V acc. to EN 60998-1		
Rated Current	16 A		
Soldering process	Reflow solder		
Torque	0,5 Nm		

Material

Moulding	PA HT, black, V-0
Comparative Tracking Index	CTI \geq 600
Insulating Group	I
Temperature Range	-40°C up to 120°C; reflow solder temperature (Peak) max 260°C (15-30 s)
Terminal body	Nickle plated brass
Pressure clamp	Tin plated tin bronze
Screw	M3; zinc plated steel, blue passivated
Solder pin	0,5 x 0,9 mm; tin plated tin bronze

Approvals

	Current	Voltage	Group	AWG	Nm
	10 [1]	300	B, D	30 - 14	0,51
	15	300	B	30 - 14	0,51

Options / Accessories

- Consecutive numbering
- Special marking according to drawing
- Self-adhesive marking strip BST-5,00 [2]
- Version without anti-twist peg or with other fastening flanges

Part Numbers: Tape-on-Reel

No. of poles	140-A-SMD	Tape Width	Tape Height	PU
2	10.801.602.A00	32 mm	13 mm	375
3	10.801.603.A00	56 mm	13 mm	375
4	10.801.604.A00	56 mm	13 mm	375
5	10.801.605.A00	56 mm	13 mm	375
6	10.801.606.A00	56 mm	13 mm	375

further number of poles on request

[1] 20 A max for factory-wiring applications only

[2] To be fitted after reflow soldering process