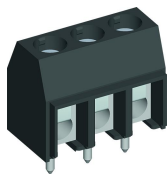


PCB connector 970-DS/..-VR

Screw connection, extended wire entrance



Standard terminal 970-DS with 1.2 mm elongated ribs in the wire entry area. Therefore a protection against contact in the wire entrance area (finger safe) is achieved.

Protection against contact according to DIN EN 61010

Part Numbers

No. of poles	970-DS/..-VR	Length	PU
2	20.871.091	11,00	
3	20.872.092	16,00	

further number of poles on request

Special product

General Information

Pitch	5 mm
No. of poles	2, 3
Areas of application	e.g. drive engineering




Technical Data

Clamping Range	<i>solid / flexible / AWG</i>		
<i>with wire protector</i>	0,75 - 4 mm ² / 0,75 - 2,5 mm ² / 18 - 12 AWG		
Rated Cross Section	2,5 mm ²		
Wire Stripping Length	6,5 mm ± 0,5 mm		
Overvoltage Category	III	III	II
Pollution Severity Level	3	2	2
Rated Voltage	250 V	320 V	630 V
Rated Impulse Voltage	4kV	4kV	4kV
Rated Insulation Voltage	250 V accord. to EN 60998-1		
Rated Current	24 A		
Hole in PCB	ø 1,3 mm		
Torque	0,5 Nm		

Material

Moulding	PA, grey, V-0
Comparative Tracking Index	CTI ≥ 600
Insulating Group	I
Temperature Range	-40°C up to 100°C
Terminal body	Tin plated brass
Screw	M3; zinc plated steel, blue passivated
Solder pin	ø 1 mm; Tin plated copper alloy
Wire protector	Tin plated tin bronze

Approvals

	Current	Voltage	Group	AWG	Nm
	20	300	B	22-12 [1]	0,51
	10	300	D	22-12 [1]	0,51
	20	300	B	26 - 12	0,51
	10	300	D, E	26 - 12	0,51
	Current	Voltage	mm ²		
	24	400	2,5		

[1] Min No. 26 AWG for factory-wiring only

Options / Accessories

- Consecutive numbering
- Special marking according to drawing
- Self-adhesive marking strip BST-5,00
- Longer solder pins up to 95 mm