



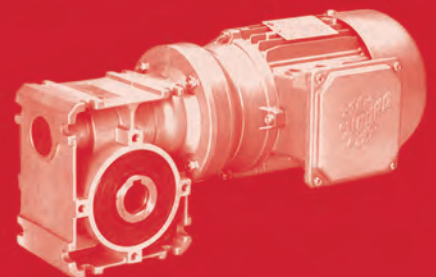
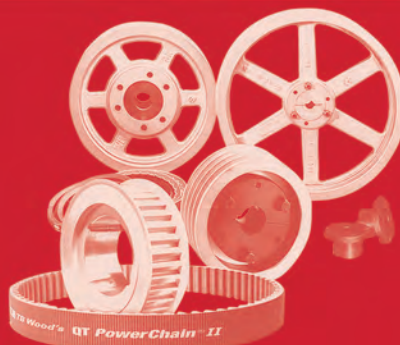
**WEIMER**

**BEARING & TRANSMISSION, Inc.**

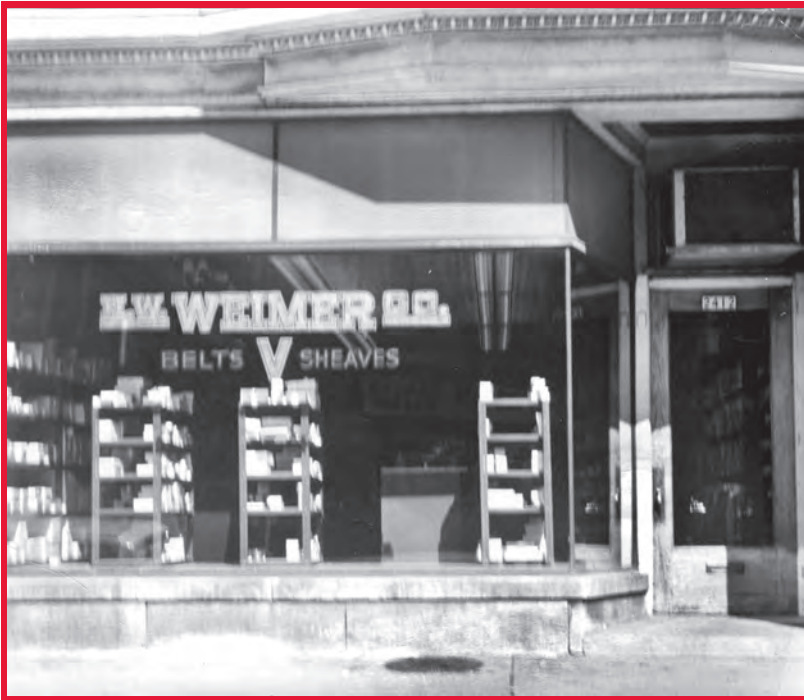
est. 1926

**PRODUCT LINE CARD**

[weimerbearing.com](http://weimerbearing.com)



# WEIMER BEARING & TRANSMISSION, INC. *est.* 1926



Founded in 1926 by inventor and engineer, Hugo Weimer, H.W. Weimer Company distributed and manufactured power transmission components for industrial customers in the greater Milwaukee area. In 1983, the company name was changed to Weimer Bearing & Transmission, to reflect the growing involvement in both power transmission and bearing technology. Specializing in high-tech mechanical, electrical motion control, and fluid power products, Weimer

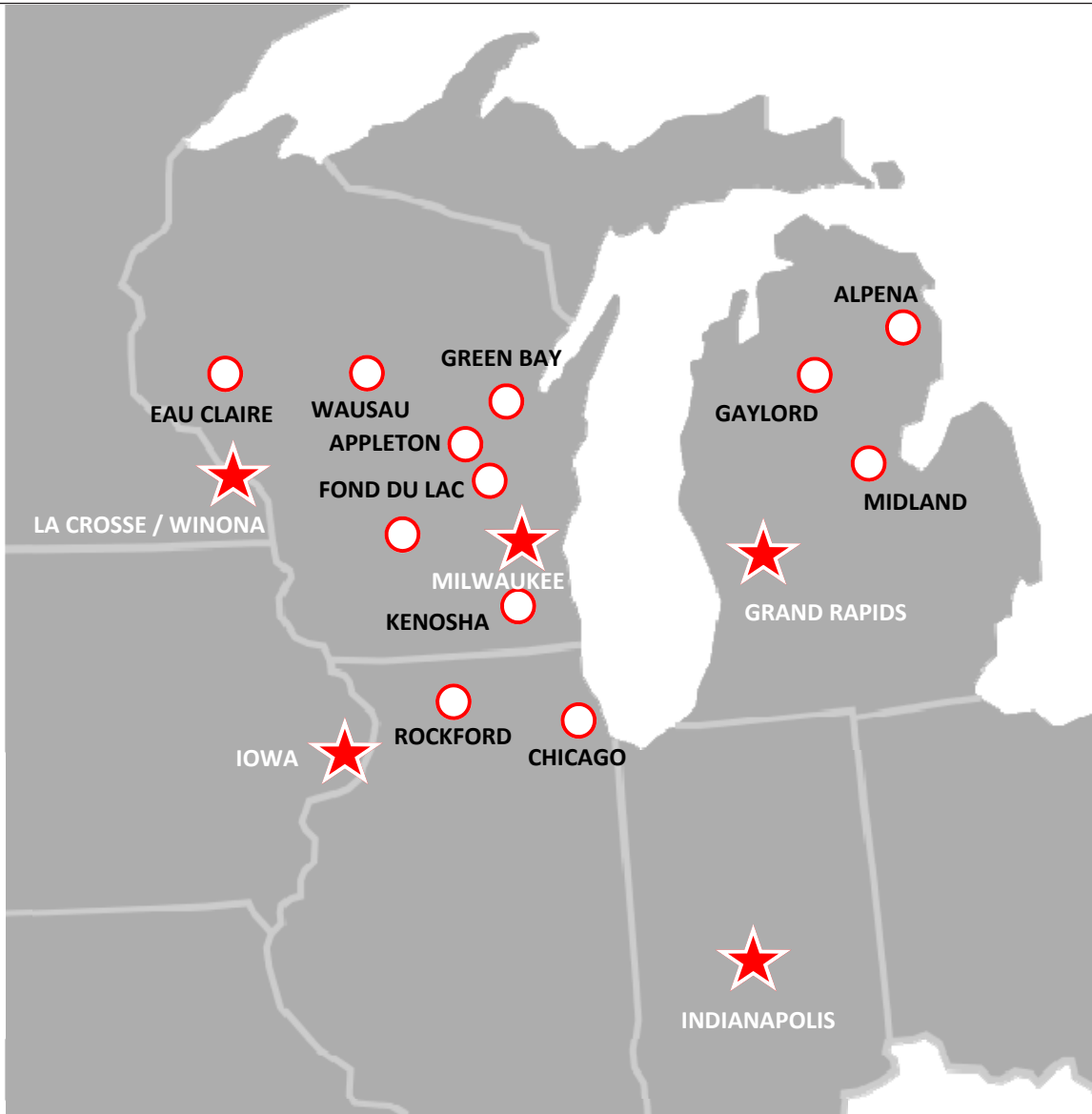
Bearing & Transmission offers in-house engineering support, complete machining and fabrication capabilities, product repair services and custom tailored inventory solutions. Customers can depend on Weimer Bearing & Transmission for high quality products, exceptional customer service and a total commitment to the success of their business.

*"The future is bright for Weimer Bearing & Transmission. We will continue to grow and adapt with the changing needs of our customer base. We are firmly committed to excellence and professionalism in all facets of our business. Our growth and expansion plans are unlimited, and we intend to continue our mission of being the finest in our industry."*

**RICHARD STANGL, CEO**



# STOCKING LOCATIONS



**17 STOCKING LOCATIONS THROUGHOUT THE MIDWEST**

**PRIVATELY HELD**

**SUPPLYING OVER 150 INDUSTRIAL POWER TRANSMISSION MANUFACTURERS**

**ISO 9001:2008 CERTIFIED**

**FOUNDING MEMBER OF THE INDEPENDENT DISTRIBUTORS COOPERATIVE (IDC)  
WITH OVER 80 MEMBERS AND 300 LOCATIONS**

**24 HOUR EMERGENCY SERVICE**

**SATURDAY BUSINESS HOURS**

# PRODUCTS

## BEARINGS



ANGULAR CONTACT  
BABBITT  
BALL  
BRONZE  
CAM FOLLOWERS  
CERAMIC  
CORROSION RESISTANT  
CYLINDRICAL  
FLANGE  
FOOD GRADE  
GLASS  
GRAPHITE



HIGH TEMPERATURE  
JOURNAL  
LINEAR  
MACHINE TOOL  
MINIATURE  
NEEDLE  
PILLOW BLOCK  
POLYMER  
PRECISION  
ROD END  
SNW KITS  
SHAFTING



SLEWING RINGS  
SPECIALTY  
SPHERICAL  
SPLIT HOUSING  
STAINLESS STEEL  
TAKE - UP  
TAPERED  
TEFLON  
THERMOPLASTIC  
THRUST  
UNGROUND  
WOOD



## MECHANICAL POWER TRANSMISSION



ACTUATORS  
BALL SCREWS  
BALL SPLINES  
BELTS  
BUSHINGS  
BRAKES  
CHAIN  
CLUTCHES



COUPLINGS  
GEARS  
GEAR MOTORS  
GEAR REDUCERS  
HTD DRIVES  
IDLERS  
LEAD SCREWS  
PULLEYS



ROLLER SCREWS  
SERVO GEARHEADS  
SPROCKETS  
TORQUE LIMITERS  
TENSIONERS  
UNIVERSAL JOINTS  
VARIABLE SPEED DRIVES



## SPECIALTY PRODUCTS



ADHESIVES  
ALUMINUM FRAMING  
BATTERIES  
BEARING ISOLATORS  
BEARING LUBRICATORS  
BEARING PULLERS  
CASTERS  
CABLE CARRIERS  
CABLE CYLINDERS  
CHAIN BREAKERS  
FOOD GRADE PRODUCTS



GAS SPRINGS  
HAND TOOLS  
KEYSTOCK  
KNOBS AND HANDLES  
LASER ALIGNMENT TOOLS  
LEVELING PADS  
LOAD CELLS  
MAINTENANCE TOOLS  
MANIFOLDS  
METRIC COMPONENTS  
O - RINGS



OIL SEALS  
PROTECTIVE BELLOWS  
RETAINING RINGS  
SHAFT COLLARS  
SHIMS  
SORBENT AND SPILL CONTROL PRODUCTS  
SPINDLES  
WAY COVERS  
WEAR STRIPS

# PRODUCTS

## MATERIAL HANDLING



AUGERS  
BELT CLEANERS  
BUCKET ELEVATORS  
BUCKETS  
CHAIN  
CONVEYOR BELTING



CONVEYORS  
DRAG CONVEYORS  
FLAT WIRE BELTING  
HEAD / TAIL PULLEYS  
PLASTIC MODULAR BELTING  
ROLLERS



SCREW CONVEYORS  
TABLE TOP CHAIN  
TAKE - UP UNITS  
WASTE WATER  
TREATMENT  
WEAR STRIPS  
WIRE MESH BELTING

## ELECTRONIC MOTION CONTROL



AC / DC MOTORS  
AC INVERTERS  
BRAKES  
CLUTCHES  
CHEMICAL DUTY  
MOTORS  
DC CONTROLS  
DEFINITE PURPOSE  
CONTROLS  
EXPLOSION PROOF  
MOTORS  
ENCODERS



LIGHT CURTAINS  
LINEAR MOTION  
CONTROL  
MOTOR CONTROL  
CENTERS  
MOTOR STARTERS  
PILOT DEVICES  
PREMIUM EFFICIENCY  
MOTORS  
PROGRAMMABLE  
CONTROLLERS  
RELAYS



SAFETY SWITCHES  
SENSORS  
SERVO MOTORS  
AND CONTROLS  
STEPPER MOTORS  
AND DRIVES  
TORQUE CONTROL  
DEVICES  
VECTOR DRIVES

## FLUID POWER



AIR PREPARATION  
AUTOMATIC VALVES  
CONTROL VALVES  
CYLINDERS  
FILTERS  
FRL's



HOSE AND FITTINGS  
HYDRAULIC CYLINDERS  
MANUAL VALVES  
PANCAKE CYLINDERS  
PNEUMATIC CYLINDERS  
POWER SUPPLIES



RODLESS CYLINDERS  
ROTARY UNIONS  
SUCTION CUPS  
TIE ROD CYLINDERS  
VACUUM MAINTENANCE  
VACUUM PUMPS

## CUSTOMIZED INDUSTRIAL SERVICES



AFTER HOURS EMERGENCY  
SERVICE  
CUSTOM BAR CODING  
CAD CAPABILITIES  
COMPUTERIZED DRIVE DESIGN  
DOCUMENTED COST SAVINGS  
ELECTRONIC DATA

INTERCHANGE (EDI)  
ENGINEERING ASSISTANCE  
FULL SERVICE IN-HOUSE  
MACHINING  
KANBAN  
KITTING  
MAINTENANCE  
SEMINARS



THIRD PARTY  
LOGISTICS (3PL)  
VALUE ADDED  
DOCUMENTATION  
VENDOR MANAGED  
INVENTORY (VMI)  
3D MODELING

# BEARING MANUFACTURERS



## BEARING MANUFACTURERS

ACCURATE BUSHING

AETNA BEARING

ALINABAL

AMERICAN SLEEVE BEARING

AMI

ANDREWS

ASAHI BEARING

BARDEN

BERLISS

BISHOP - WISECARVER

BLUE BRUTE

BOWER / BCA

BUNTING

CARTER MANUFACTURING

C.E. GOBEIL

CHAMPION

COOPER BEARING

CRAFT

DU BEARING

DUAL - VEE

ECONOMY BUSHING

EDT

ELGES

FAG BEARINGS

FEDERAL BRONZE

FK BEARING

FRANTZ BEARING

FYH BEARING

GENERAL BEARING

GRAPHALLOY

HEIM

HEPCO

HIWIN

HUB CITY

HUDSON BEARING

HYATT BEARING

IDC BEARING

IGUS

IKO BEARING

INA

IPTCI

ISOSTATIC

JILSON

JONES BEARING

JTEKT

KAYDON

KETCHIE HOUSTON

KOYO



## BEARING MANUFACTURERS

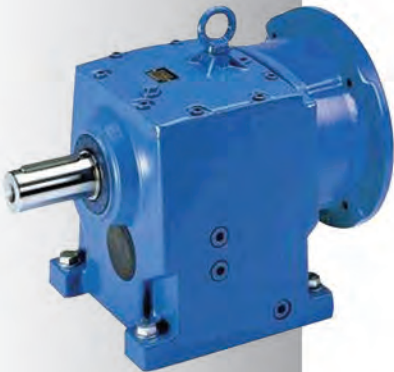
LEE CONTROLS  
LM76  
MIETHER BEARING  
MISUMI  
MOLINE  
MRC  
NACHI BEARING  
NATIONAL ROD END  
NB LINEAR  
NICE BEARING  
NKE  
NSK LINEAR  
NTN  
ORS BEARING  
OSBORN  
PACIFIC BEARING  
PCI  
PEER BEARING  
POBCO  
QA1  
QM BEARING  
RBC  
RELIABLE BRONZE  
ROLLON  
ROYERSFORD  
SNR  
SCHATZ  
SCHEERER  
SILVERTHIN  
SMITH  
SOLIDUR  
SKF MOTION TECHNOLOGIES  
SOLUS  
SPADONE - ALPHA  
SYSTEM PLAST  
THOMSON  
TIMKEN  
TRIANGLE  
TYSON  
VALUGUIDE  
WOODEX  
ZKL BEARING



# MECHANICAL POWER MANUFACTURERS

## MECHANICAL POWER TRANSMISSION MANUFACTURERS

ACCURATE GEAR	COLLARS AND COUPLINGS	GATES MECTROL
ACME CHAIN	CONE DRIVE	G & G MANUFACTURING
ACSI CONVEYOR	CONTINENTAL/CRP	GERBING
ALLIED LOCKE	CONVEYOR COMPONENT SYSTEMS	G.L. HUYETT
ALLING LANDER	CURTIS MACHINE	GOODYEAR EAGLE
AMERICAN PULLEY	DAIDO	GRANT GEAR
AMETRIC	DALTON GEAR	GREAT LAKES INDUSTRIES
AMMERAAL BELTECH	DANAHER	GROVE GEAR
AUTOGARD	DAVID BROWN	HABASIT / KVP
BANDO	DAYCO	HELICAL
BELDEN	DAYTON SUPERIOR	HI-LO PULLEY
BENZLERS	DIAMOND CHAIN	HILLIARD
BISON GEAR	DICHTOMATIK	HITACHI
B-LOC	DIEQUA	HORTON
BONFIGLIOLI	DORRIS	HUB CITY
BOSTON GEAR	DOUGLAS MANUFACTURING	HUCO DYNATORK
BRAD FOOTE	DRIVES INC.	IDC-USA
BRECOFLEX	DUFF-NORTON	IGUS LINEAR
BREVINI	DYNA-VEYOR	INA LINEAR
BREWER MACHINE	DYNACORP	INTERROLL
BROTHER INTERNATIONAL	EAGLE BELTING	JASON
BRYANT	EFSON	JEFFREY / WHITNEY
CANDY CONTROLS	ELECTRA-GEAR	JERVIS WEBB
CARLISLE	EURODRIVE-SEW	JM CLIPPER
CCI	EXLAR	JOYCE
CHANTLAND PULLEY	FENNER DRIVES	KTR
CLEVELAND GEARS	FOOTE-JONES	KWS
CLIMAX COLLARS	FORMSPRAG	LEE CONTROLS







## MECHANICAL POWER TRANSMISSION MANUFACTURERS

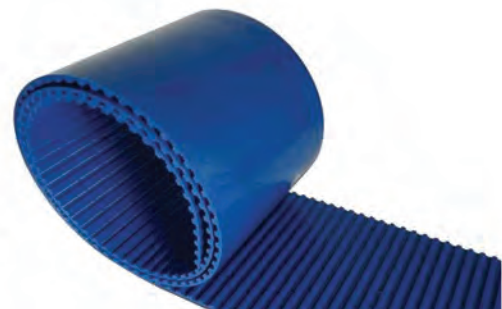
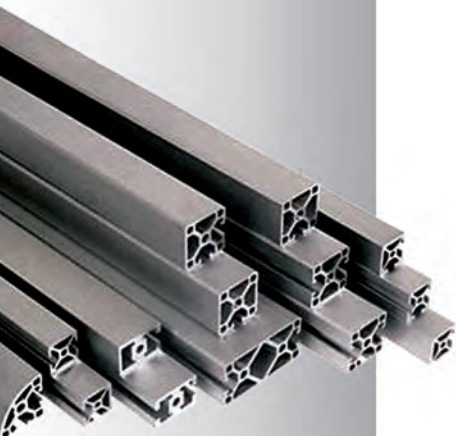
- |                        |                         |                       |
|------------------------|-------------------------|-----------------------|
| LENZE                  | POBCO                   | STANDARD LOCKNUT      |
| LINN GEAR              | POLY HI SOLIDUR         | STEELCRAFT            |
| LOVEJOY                | PRECISION PULLEY        | STERLING              |
| MACH III               | P.T. INTERNATIONAL      | STOBER DRIVES         |
| MARTIN SPROCKET & GEAR | QM                      | SUMITOMO              |
| MASKA                  | RADICON                 | SUPERIOR GEARBOX      |
| MASTERDRIVE            | RAFFEL SYSTEMS          | SYSTEM COMPONENTS     |
| MAUREY                 | RALPHS PUGH             | SYSTEM PLAST          |
| MICRON                 | RAMSEY                  | TANDLER               |
| MISUMI                 | REGINA                  | TB WOODS              |
| MOTOVARIO              | RENOLD                  | TEXTRON               |
| NATIONAL               | RINGFEDER               | THOMAS SCREW CONVEYOR |
| NB LINEAR              | RINGSPANN               | THOMSON               |
| H NEUMAN               | ROCKFORD BALL SCREW     | TIMKEN                |
| NEXEN                  | ROSSI                   | TRANSCOM              |
| NOLU                   | ROSTA                   | TRANTORQUE            |
| NOOK                   | ROTEX                   | TWIFLEX               |
| NORD GEAR              | ROYERSFORD              | UNI CHAIN             |
| NORTH AMERICAN PULLEY  | RULAND                  | UNION CHAIN           |
| NSK LINEAR             | R & W                   | U.S. TSUBAKI          |
| NSW BELTING            | SAGINAW                 | VALU GUIDE            |
| OVERLY HAUTZ           | SEW                     | VAN DER GRAAF         |
| OMNI METALCRAFT        | SHIMPO                  | VAN ZEELAND           |
| PACIFIC                | SIER BATH               | VON RUDEN             |
| PARKER                 | SOLUS                   | W.C. BRANHAM          |
| PCI                    | SPARKS MOTORIZED PULLEY | WHITTET-HIGGINS       |
| PEER CHAIN             | SPEED CONTROL           | ZERO MAX              |
| PFAFF                  | STAFFORD                |                       |



# SPECIALTY MANUFACTURERS

## SPECIALTY MANUFACTURERS

- |                      |                           |                    |
|----------------------|---------------------------|--------------------|
| ALLIGATOR            | HABASIT / KVP             | MOL BELTING        |
| AMMERAAL BELTECH     | HERMES                    | MOLECULOC          |
| APACHE               | HITACHI ENVIRONMENTAL     | ND INDUSTRIES      |
| ASHWORTH             | IDEAL                     | NEVER - SEEZ       |
| BARCO                | IGUS                      | PAYSON             |
| BI - TORQ            | INAUVATE                  | POSI - LOCK        |
| BIJUR                | INTERNATIONAL GAS SPRINGS | PREVOST            |
| BOSS                 | JASON HOSE                | RINGSPANN          |
| BRADFORD             | JERVIS WEBB               | RYCO               |
| BRENNAN              | KEYSTONE                  | SAMPLA             |
| CAMBRIDGE            | KIMBALL MIDWEST           | SCRUBS             |
| COBRA SOLID LUBE     | KING TONY                 | SHINGLE BELTING    |
| COLSON               | KIPP                      | SIA                |
| CRC INDUSTRIES       | KLUBER                    | SIEGLING           |
| DAYCO HOSE           | KRYLON                    | SIMATECH           |
| DEUBLIN COMPANY      | KYODO YUSHI               | SPILL TECH         |
| DIVERSIFIED PLASTICS | LIGHT WEIGHT BELTING      | SPX                |
| DIXON                | LUBRIPLATE                | TAPCO              |
| ELESA                | LUBESITE                  | TFCO               |
| ENERGIZER            | MACH III                  | TRICO              |
| FLEXCO LACING        | MACHINE GUARD & COVER     | UNI CHAIN          |
| FORBO                | MANASTRIP                 | US SEAL            |
| FRAME - WORLD        | MARTIN VIBRATION SYSTEM   | UTA                |
| GATES MECTROL        | MARYLAND                  | VIBRA - TITE       |
| GILMAN USA           | MAUDLIN                   | VSM                |
| GOODYEAR VEYANCE     | MAXI - LIFT               | WELKER             |
| GORTITE              | MECTROL                   | WIRE BELT          |
|                      | MICROPOLY                 | WISCONSIN STAMPING |



# ELECTRICAL & FLUID POWER MANUFACTURERS



## ELECTRICAL MANUFACTURERS

ABB	LAFERT
AC TECH	LEESON ELECTRIC
ADVANCED CONTROLS	LENZE
AEG	LINCOLN ELECTRIC
BACO	NORDIC CONTROLS
BALDOR ELECTRIC	NORTH AMERICAN ELECTRIC
BARDAC	ORIENTAL
BENSHAW	ORIX FANS
BIRCHER REGLOMAT	PACIFIC SCIENTIFIC
BISON	PIZZATO
BLUFFTON	RED LION
BOSTON GEAR	REES
CEDES	REER
CONTRINEX	RELIANCE
CONTROL TECHNIQUES	REULAND
COOPER INTERCONNECT	SALZER
DART	SCHMERSAL
DINGS	SIEMENS
DYNACORP	SINGULAR
EE CONTROLS	SPRECHER & SCHUH
ELECTROID	STEARNS
ELECTRO SENSORS	STERLING ELECTRIC
ENCLOSURE SOLUTIONS	TELCO SENSORS
EUROTHERM	THERMAL EDGE
EXLAR	TOSHIBA
FURNAS ELECTRIC	TURCK
GROSCHOPP	TWIFLEX
HITACHI	VACON
HTM SENSORS	VAN DER GRAAF
INERTIA DYNAMICS	WARNER
KEBCO	WORLD WIDE ELECTRIC
KF GROUP	

## FLUID POWER MANUFACTURERS

BARCO
BRADFORD
BRENNAN
COVAL
DEUBLIN
DIXON
FABCO - AIR
FITTINGS - UNLIMITED
HANNA
JASON HOSE
LOVEJOY
MANASTRIP
MULTI - POWER CYLINDER
NACHI HYDRAULICS
NEXEN
NORGREN
PANCAKE AIR CYLINDER
PNEUFORCE
PREVOST
VACUFORCE
WC BRANHAM
YATES CYLINDERS



# CUSTOM REPAIR

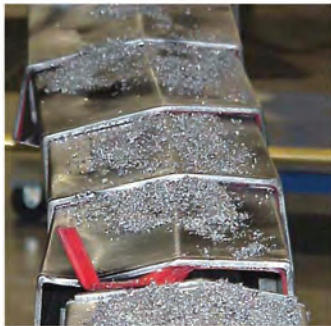
BEFORE



## GEARBOX REPAIR

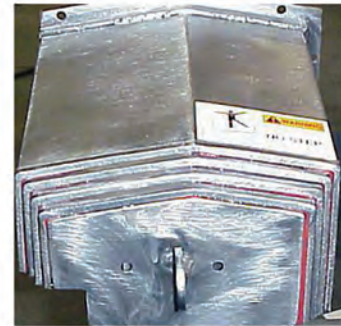
- COMPLETE INSPECTION, DISASSEMBLY AND EVALUATION
- REPAIR OR COMPLETE REBUILD
- FULLY TESTED COMPLETE WITH ONE-YEAR WARRANTY
- HOT RUSH SERVICE AVAILABLE

AFTER



## WAY COVER REPAIR

- COMPLETE REPAIR OR REPLACEMENT
- REVERSE ENGINEERED OEM COVERS
- FULL DENT REMOVAL, BOX AND WIPER REPLACEMENT, AND CYCLE TESTING
- SPECIAL 24-HOUR DELIVERY SERVICE AVAILABLE



## SLIDE AND SPINDLE REPAIR

- NO COST EVALUATION AND INSPECTION
- FULL REBUILD SERVICES IN CLASS 10000 LEVEL CLEANROOM
- OEM SPINDLE OR SLIDE REPLACEMENT
- ASSEMBLY, TEST AND QUALITY ASSURANCE DOCUMENTATION
- EXPEDITED EMERGENCY SERVICE AVAILABLE



## BALL SCREW REPAIR

- COMPLETE INSPECTION AND REPAIR OF BALL, ACME AND LEAD SCREW ASSEMBLIES
- REBUILD INCLUDES CLEAN, INSPECT, REGRIND, REBALL AND STRAIGHTEN
- REVERSE ENGINEERING CAPABILITIES
- EMERGENCY RUSH SERVICE



# FULL SERVICE MACHINING FACILITY



## CAPABILITIES

REBORES

KEYWAYS

DRILL AND TAP

BOLT PATTERNS

IDLER PULLEYS

COUNTER BORES

CUT, MILL, DRILL CLASS L SHAFTING

MODIFIED PT COMPONENTS

BROACHING



## COMPONENTS



## FINISHED PRODUCT



## ASSEMBLIES

- FREE UP TIME, LABOR RESOURCES, AND PRODUCTION SPACE WITH WEIMER BEARING'S CUSTOMIZED KITTING AND ASSEMBLY SERVICES

- FULL PROCUREMENT, KITTING, AND ASSEMBLY OF PRODUCTS

- CUSTOM PART NUMBERING AND PACKAGING



## WEIMER LOCATIONS

### MILWAUKEE/GERMANTOWN

#### CORPORATE HEADQUARTERS

N112 W13131 MEQUON RD.  
GERMANTOWN, WI 53022  
262 781 1992 • 1 800 242 7981  
EMERGENCY PHONE 414 303 8077  
milwaukee@weimerbearing.com

### CHICAGO/ELK GROVE VILLAGE

2240 ELMHURST RD.  
ELK GROVE VILLAGE, IL 60007  
847 258 3708 • 888 337 3719  
EMERGENCY PHONE 815 871 3838  
chicago@weimerbearing.com

### APPLETON/GREEN BAY

2051 PROGRESS WAY  
KAUKAUNA, WI 54130  
920 766 5463 • 1 800 346 7704  
EMERGENCY PHONE 920 213 8962  
kaukauna@weimerbearing.com

### MADISON/SUN PRAIRIE

1535 CORPORATE CENTER DR.  
SUN PRAIRIE, WI 53590  
608 825 7979 • 1 800 341 3090  
EMERGENCY PHONE 608 220 9722  
madison@weimerbearing.com

### EAU CLAIRE

8130 149th ST.  
CHIPPEWA FALLS, WI 54729  
715 726 9185 • 1 877 285 8989  
EMERGENCY PHONE 715 577 6373  
eauclaire@weimerbearing.com

### FOND DU LAC

74 HALBACH COURT  
FOND DU LAC, WI 54937  
920 933 5168 • 1 844 427 3486  
EMERGENCY PHONE 920 213 8962  
fonddulac@weimerbearing.com

### WAUSAU/WESTON

7203 RICKYVAL ST.  
WESTON, WI 54476  
715 241 9528 • 1 877 642 3391  
EMERGENCY PHONE 715 797 8748  
wausau@weimerbearing.com

### KENOSHA

9550 58th PLACE  
KENOSHA, WI 53144  
262 925 0744 • 1 866 927 6188  
EMERGENCY PHONE 262 515 8003  
kenosha@weimerbearing.com

### ROCKFORD/CAMKEN INC.

6828 FOREST HILLS RD.  
LOVES PARK, IL 61111  
815 229 1510 • 1 800 397 1510  
EMERGENCY PHONE 815 871 3838  
rockford@weimerbearing.com

### LA CROSSE/WINONA

902 E. 2nd ST.  
WINONA, MN 55987  
507 474 4395 • 1 877 285 8989  
EMERGENCY PHONE 608 797 2916  
lacrosse@weimerbearing.com

### IOWA

7238 JEBENS AVE.  
DAVENPORT, IA 52806  
563 386 1306 • 1 800 397 1510  
EMERGENCY PHONE 815 985 3719  
davenport@weimerbearing.com



# BEARING & TRANSMISSION, Inc.

24 HOUR EMERGENCY SERVICE AND SATURDAY HOURS AVAILABLE



www.weimerbearing.com

2016