

LOW PRESSURE SODIUM

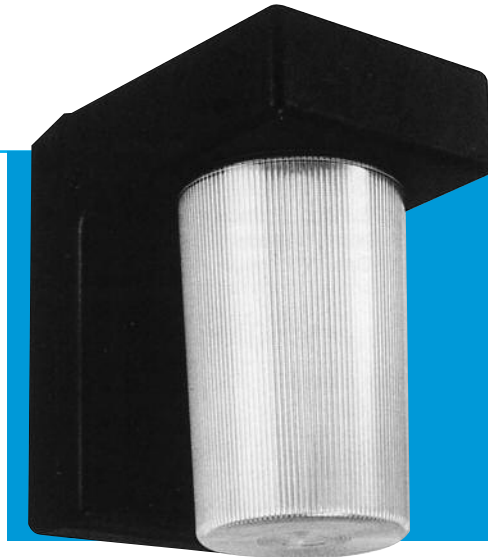


1000 Series *Rustproof Vandal Resistant Wall Luminaire*

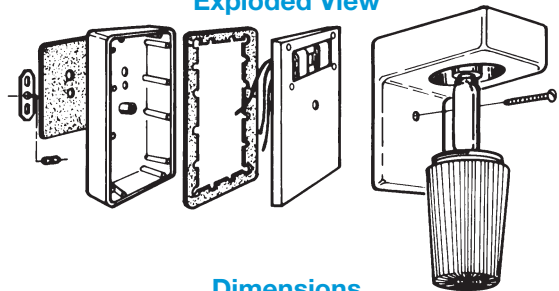
This wall bracket fixture is as durable as it is attractive. Suitable for indoor/outdoor applications ranging from residential to commercial environments. **Engineered with components and materials offering the highest resistance to rust, corrosion and impact.** The housing is nonconductive, assuring more safety to the end user. Ideally suited as security lighting for farm buildings, schools, motels, hospitals, condominiums; and industrial, commercial, and government buildings. Light doesn't attract insects; is environmentally friendly (recommended for oceanfront and coastal area lighting); is the most energy efficient lighting source; and won't contribute to light pollution.

Specifications

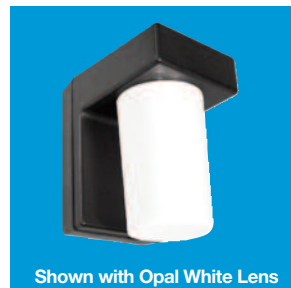
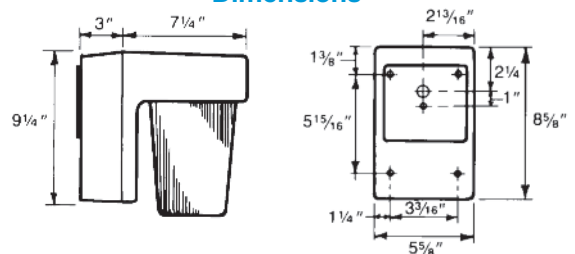
Lens:	Injection molded of UV-stabilized polycarbonate with threaded neck for screw-in attachment. Average thickness is .125". Smooth exterior surface for ease of cleaning.
Base Plate:	Rustproof .080" 5052 H-32 tempered marine-grade aluminum.
Housing:	Injection molded in black, white or bronze UV-stabilized, reinforced polycarbonate . Rear knockout for supply wire. Available with up to four threaded connections and plugs suitable for .50" conduit.
Gasket:	Closed-cell neoprene rubber in .125" thickness creates a tight seal against moisture and contaminants.
Socket:	High-temperature phenolic double-contact base type.
Lamp (optional):	Super high-efficiency 18 watt SOX (ANSI L69RA18) double contact base type.
Ballast:	High Power (HPF) for 120/277V.
Hardware:	Mounting hardware included. Optional Lens-Lock screws are 1/4-20 socket set screws.
Mounting:	Wall mounting only.



Exploded View



Dimensions



Shown with Opal White Lens



Shown with White Housing

ETL-US and ETL-C Listed For Wet Locations.

All polycarbonate components meet Underwriters Laboratories 746C tests for polymeric material and carry a flammability rating of 94HB or better on lenses and the superior 94-5V rating on housings.

Luminaire Type _____
 Catalog Number _____
 Job Name _____
 Approval _____

WF Harris Lighting

Innovative Lighting Designs Since 1970

P.O. Box 5023, Monroe, NC 28111-5023, USA
 (704) 283-7477 (OPERATOR ASSIST) • (704) 283-6880 (FAX)
 (800) 842-9345 (TOLL FREE)

e-mail: customerservice@wfharris.com

www.wfharrislighting.com

Form 1529 12/15

"A Live Operator Company Standing Ready to Serve Your Lighting Needs"

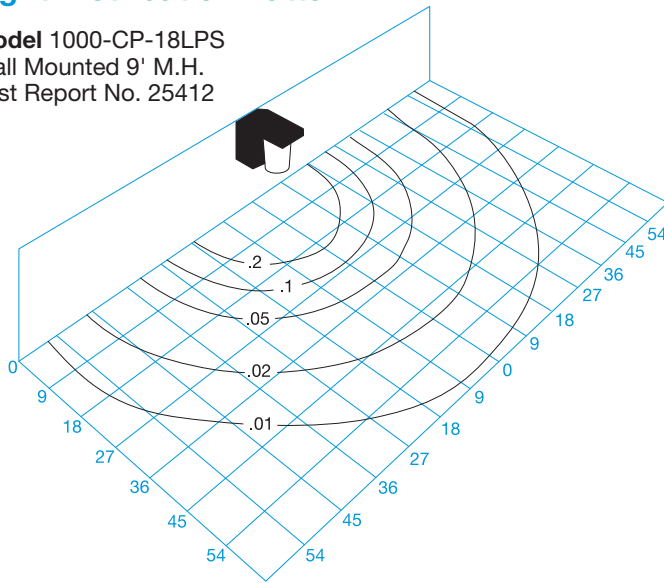
LOW PRESSURE SODIUM

Ordering Information (Fill In Blanks For Complete Catalog Number)

1000	CP		18 LPS				
Model	Lens Color	Housing Color	Watts-Lamp	Power Factor	Volts	Options	Conduit Connection Location(s)
1000	CP-Clear Prismatic	HK-Black HW-White HB-Bronze	18 LPS	HPF	120/277	PC-Photo Control ¹ LP-Lamp LL-Lens Lock Screws FS-Fuse and Holder	CRS-Right Side CLS-Left Side CT-Top CB-Bottom C4-All (Positions Based on Facing Fixture)

Light Distribution Pattern

Model 1000-CP-18LPS
Wall Mounted 9' M.H.
Test Report No. 25412



Conversion Table

Mounting Height	Height Conversion Factor
8'	1.28
9'	1.00
10'	.81
12'	.56

Using Conversion Table

TO ADJUST FOOTCANDLES (FC) SHOWN IN DIAGRAM AT LEFT, USE FOLLOWING FORMULA WITH HEIGHT CONVERSION FACTOR (HCF):

$$FC \times HCF = FC \text{ at alternate height}$$



LENS, HOUSING, AND ALUMINUM BASE
PLATE CARRY A LIFETIME GUARANTEE.

Specifications Subject to Change Without Notice

W.F. Harris Lighting

Innovative Lighting Designs Since 1970

P.O. Box 5023, Monroe, NC 28111-5023, USA
(704) 283-7477 (OPERATOR ASSIST) • (704) 283-6880 (FAX)

(800) 842-9345 (TOLL FREE)

e-mail: customerservice@wfarris.com

www.wfarrislighting.com

Printed in USA

Form 1529

12/15

"W. F. Harris Lighting Will Not Sacrifice Quality for the Sake of Price."