

# FLUORESCENT



Intertek

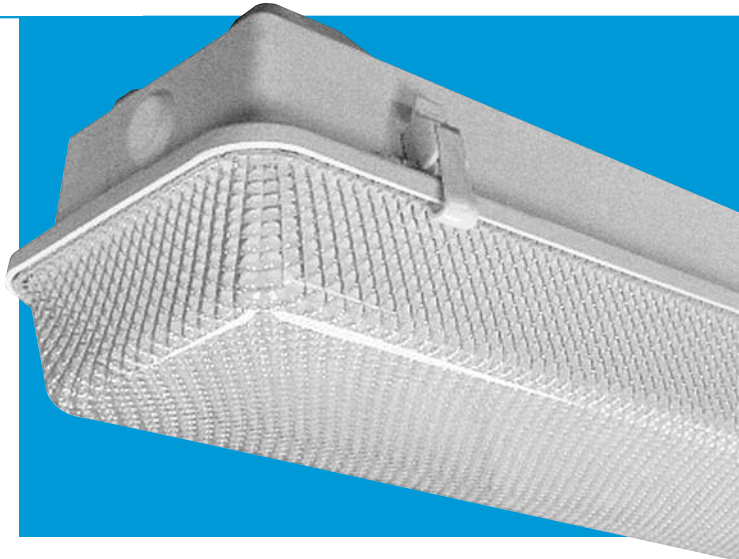
## Rough Service Series

**RS-100**  
**RS-200**

*Rustproof Vandal-Resistant Ceiling and Wall Luminaire*  
*108 Watts Maximum*

Designed for wet or dry covered ceiling locations where efficiency, style, and endurance to environmental elements are as important as reducing installation time and cost. Rigid one-piece housing allows no flex during handling nor during installation.

**Quality engineered to resist rust, corrosion, moisture, dust, and impact.** Smooth lens exterior for ease of cleaning, rounded corners for added strength, and prismatic lens interior for optimal light diffusion. The totally non-conductive housing assures more safety to the end user. Special U-shaped channel with non-shifting poured-in-place gasket allows the flanged lens to fit snugly for a continuous seal against moisture and dust. Ideally suited for kitchens, food processing facilities, schools and universities, parking garages, government and civic facilities, car washes, commercial and industrial facilities, marine and public areas.



## Specifications

**Lens:** Vacuum-formed **polycarbonate**. Prismatic lens interior is engineered for maximum light control and diffusion; smooth exterior allows ease of cleaning; and rounded corners for additional strength. Edge is flanged to fit snugly into the gasketed retention channel for a continuous seal against moisture and dust.

**Housing:** Rigid one-piece compression-molded fiberglass reinforced polyester (self-extinguishing ASTM D635-74). Design and construction allows no flex during handling and installation, thus reduces the possibility for damage and decreases installation time and cost. Two  $\frac{7}{8}$ " diameter end holes. White polyethylene molded end plugs snap lock in place to maintain tight seal of unused end holes.

**Gasket:** Continuous poured-in-place gasket completely fills the perimeter channel of the housing and snugly accepts lens flange for maximum seal integrity against moisture and dust. Gasket cannot separate, shift or fall out, thus reducing installation time and cost.

**Mounting and Hardware:** Two corrosion resistant brass 10-32 fixture mounting studs, molded into the housing, accept strip lighting fixture internally. External mounting brackets optional.

**Lamps and Ballast:** 2-40-PLL, 24-FL-T5, 2-17-FL-T8, 2-32-FL-8 and 2-54-FL-T5. Electronic Ballast. 0°F Start Temperature.

**Latching System:** Standard with Models RS100 or RS200, are 2 or 3 pairs (respectively) of white injection molded high impact Celcon suitcase style latches that secure a positive seal between housing, gasket and lens. Special tamperproof stainless steel (for marine use) or polycarbonate latches available as a custom component. W. F. Harris Lighting recommends using the optional stainless steel latches on any luminaire being used in outside applications.

ETL-US Listed For Wet Locations Covered Ceilings.  
ETL-C Listed for Indoor/Outdoor Covered Ceilings.  
USDA Certified for Food Area Applications.  
NSF Certified for Non-Food Zone Applications.

The polycarbonate lens carries a flammability rating of 94HB or better.  
The self-extinguishing fiberglass housing has the superior rating of SE-O.

Luminaire Type \_\_\_\_\_  
Catalog Number \_\_\_\_\_  
Job Name \_\_\_\_\_  
Approval \_\_\_\_\_

## W.F. Harris Lighting

**Innovative Lighting Designs Since 1970**

P.O. Box 5023, Monroe, NC 28111-5023, USA  
(704) 283-7477 (OPERATOR ASSIST) • (704) 283-6880 (FAX)  
(800) 842-9345 (TOLL FREE)

e-mail: [customerservice@wfharris.com](mailto:customerservice@wfharris.com)  
[www.wfharrislighting.com](http://www.wfharrislighting.com)

Form 1561

9/15

*"A Live Operator Company Standing Ready to Serve Your Lighting Needs"*

# FLUORESCENT

Ordering Information (Fill In Blanks For Complete Catalog Number)


Model	CP Lens	Watts-Lamp	HPF Power Factor	Volts	Options
-------	------------	------------	---------------------	-------	---------

Model	Lens	Watts-Lamp	Power Factor	Volts	Options
-------	------	------------	--------------	-------	---------

RS-100	CP-Clear	RS-100	HPF	120-277	
RS-200	Prismatic	2-40-PLL 2-17-FL-T8 <sup>1</sup> 2-24-FL-T5			
		RS-200 2-32-FL-T8 2-54-FL-T5-HO			

- MS**-Mounting Straps (2)
- EM**-(2 Lamp Luminaires) Both lamps operate during normal conditions; one lamp operates during emergency.
- EM2**-(2 Lamp Luminaire) Two lamps operate during normal conditions; the same two lamps operate during emergency.
- EMO2**-(2 Lamp Luminaire) Two (2) lamps only operate during emergency.<sup>1</sup>
- FS**-Fuse and Holder
- LPC**-Polycarbonate Latch<sup>2,3</sup>
- LCWTP**-Tamperproof Celcon Latch with #6-32x5/8" Tamperproof Screws<sup>2,3</sup>
- LPCTP**-Tamperproof Polycarbonate Latch<sup>2,3</sup>
- LSS**-Stainless Steel Latch<sup>2,3</sup>
- LSSTP**-Stainless Steel Tamperproof Latch<sup>2,3</sup>
- FLS**-Flex Sockets (for T8 Lamps Only)

**Accessories** (Order Separately)

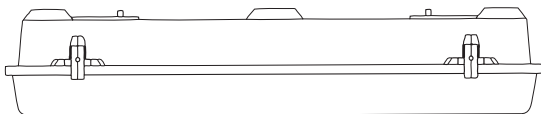
- TPT**-Tamperproof Screwdriver 
- BRKT**-Bracket Assembly Kit (2)

<sup>1</sup> EMO2 Option Only Available in Model RS-100 for 2-17-FL-T8.  
<sup>2</sup> Special Latches Available as Custom Components.  
<sup>3</sup> Consult Factory for Availability.

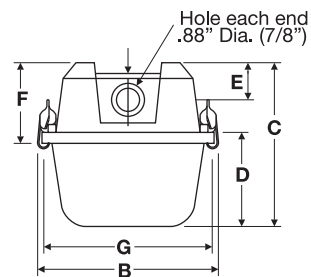
## Dimensions (in inches)

Model	A	B	C	D	E	F	G	H	J	Latches
RS-100	25-15/16	7	5-3/16	2-1/8	1-1/2	3-3/16	6-5/8	17-1/2	14-3/4	4
RS-200	49-15/16	7	5-3/16	2-1/8	1-1/2	3-3/16	6-5/8	41-1/2	38-3/4	6

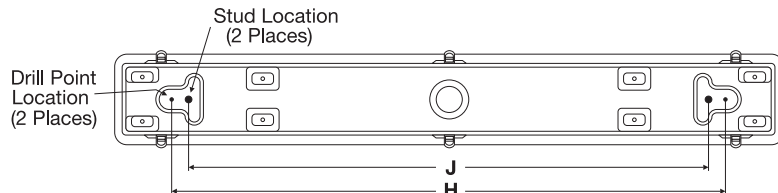
### External Side View (Model RS-100)



### External End View



### External Top View (Model RS-200)



Specifications Subject to Change Without Notice

Luminaire is Warranted to be Free of Defects in Materials and Workmanship for One Year From Invoice Date.

**W.F. Harris Lighting**  
 Innovative Lighting Designs Since 1970

P.O. Box 5023, Monroe, NC 28111-5023, USA  
 (704) 283-7477 (OPERATOR ASSIST) • (704) 283-6880 (FAX)  
 (800) 842-9345 (TOLL FREE)  
 e-mail: customerservice@wfharris.com  
 www.wfharrislighting.com



*"W. F. Harris Lighting Will Not Sacrifice Quality for the Sake of Price."*