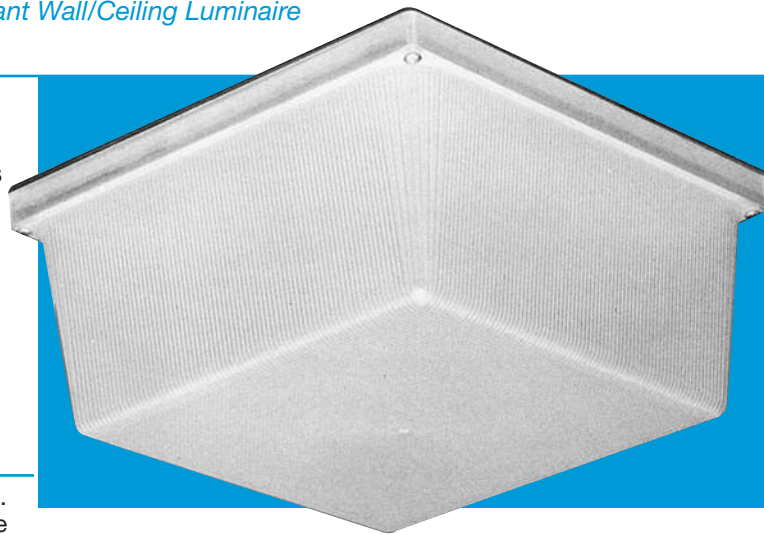


FLUORESCENT



1200 Series *Rustproof Vandal-Resistant Wall/Ceiling Luminaire* *Two 42 Watts Maximum*

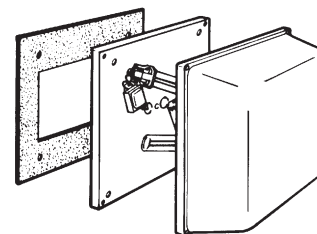
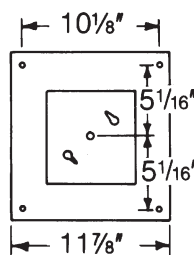
Designed for indoor/outdoor use where efficiency and style are as important as endurance to abuse by environmental elements or vandalism. **Rustproof.** Engineered with materials offering **high resistance to rust, corrosion, and impact.** Smooth exterior surface for ease of cleaning and rounded corners for added strength and safety. The **polycarbonate** housing is **nonconductive**, insuring more safety to the end user. Ideally suited for schools, motels, apartments, parking areas and commercial establishments.



Specifications

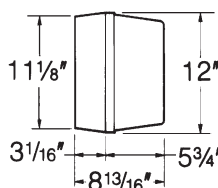
Lens:	Injection molded of UV-stabilized polycarbonate . Average thickness is $\frac{1}{8}$ ". Smooth exterior surface for ease of cleaning and rounded corners for added strength and safety.
Base Plate:	Rustproof .080" 5052 H-32 tempered marine-grade aluminum.
Housing: (optional)	Injection molded of UV-stabilized reinforced white or bronze polycarbonate . Rear knockout for supply wire. Available with up to four threaded connections and plugs suitable for $\frac{1}{2}$ " conduit. (Mounting hardware not included.)
Gasket:	Closed-cell neoprene rubber in $\frac{1}{8}$ " thickness creates a tight seal against moisture and contaminants.
Socket:	Four-pin and two-pin type. Leads insulated for 105°C.
Lamp: (optional)	High-efficiency PL, PLT, and FL lamps offer up to 10 times longer life and 70% energy savings over incandescent lamps.
Ballast:	Self-start preheat Normal Power Factor 120V or High Power Factor for 120V- 277V. 18W, 26W, 32W, and 42W are standard 120V through 277V, 50/60Hz world class universal electronic, 0°F or better starting temperature.
Hardware:	Four stainless steel 8-32 phillips truss head screws or tamperproof screws (TORX® type) attach lens to base plate. Mounting hardware included.

Exploded View

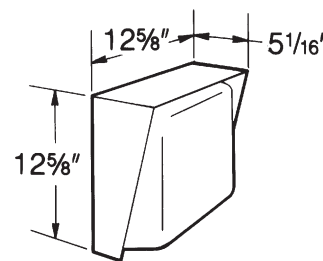


Dimensions

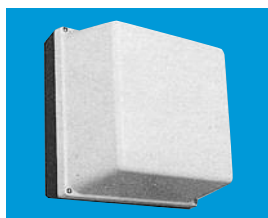
(4) $\frac{1}{2}$ " Threaded Conduit Connections (optional)



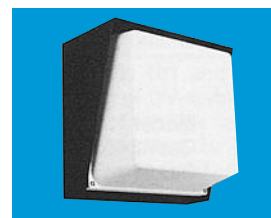
With Optional Housing



With Optional Decor Pack



Shown With Optional Housing



Shown With Optional Decor Pack

ETL-US and ETL-C Listed For Wet Locations

All polycarbonate components meet Underwriters Laboratories 746C tests for polymeric material and carry a flammability rating of 94HB or better on lenses and the superior 94-5V rating on housings.

Luminaire Type _____
 Catalog Number _____
 Job Name _____
 Approval _____

WF Harris Lighting

Innovative Lighting Designs Since 1970

P.O. Box 5023, Monroe, NC 28111-5023, USA
 (704) 283-7477 (OPERATOR ASSIST) • (704) 283-6880 (FAX)
 (800) 842-9345 (TOLL FREE)

e-mail: customerservice@wfharris.com
www.wfharrislighting.com

"A Live Operator Company Standing Ready to Serve Your Lighting Needs"

FLUORESCENT

Ordering Information (Fill In Blanks For Complete Catalog Number)

Model	Lens Color	Housing Color	Watts/Lamp	Power Factor	Volts	Options	Conduit Connection
Model	Lens Color	Housing Color	Watts/Lamp	Power Factor	Volts	Options	Conduit Connections
1200	CP-Clear Prismatic OW-Opal White	HW-White HB-Bronze	2-13 PL ⁴ 2-26 PLC* ⁵ 2-18 PLT* ⁵ 2-26 PLT* ⁵ 2-32 PLT* ^{3,5} 2-42 PLT* ^{3,5}	NPF HPF	120 120-277*	LP- Lamp PC-120- Photo Control for 120V ² PC-277- Photo Control for 208V, 240V, 277V (Specify Voltage) FS-Fuse and Holder SW/B-On/Off Switch and Boot ^{1,2} TPS-Tamperproof Screws CW2-5°F Ballast for PL Lamps, NPF DPB-Bronze Marine-Grade Aluminum Decor Pack SR-Photo Control Shield - Round ² SRH-Photo Control Shield - Half Round ² PS-BZ-Painted Bronze 4 sides on Clear Lens GCO-HD-Heavy Duty Grounded Convenience Outlet ^{1,2} GRAPHICS-Numbers, Letters, Symbols, Logos 12H__-Housing (Specify Color) W-White B-Bronze	CRS-Right Side CLS-Left Side CT-Top CB-Bottom C4-All Four Sides (Positions Based on Facing Luminaire)

Accessories

(Order Separately)

TPT-Tamperproof Screwdriver



¹ Dry Locations Only

² Requires 12H Housing

³ Includes 12H Housing

⁴ Available NPF 120 Only

⁵ Available HPF 120-277V Only

*Electronic

Fluorescent Lamp Performance

	2-13 Watt Twin PL	2-26 Watt PLC	2-18 Watt PLT	2-26 Watt PLT	2-32 Watt PLT	2-42 Watt PLT
Input Watts	34W	52W	36W	52 W	64W	84W
Lumen Output	1,650	3,600	2,400	3,600	4,800	6,400
Lamp Life (Hours)	10,000	10,000	110,000	10,000	10,000	10,000
Min. Starting Temperature	32°F	0°F	0°F	0°F	0°F	0°F

Conversion Tables

Lamp	Lamp Conversion Factor (LCF)	Mounting Height	Height Conversion Factor (HCF)
Ceiling Mount			
2-13 PL	0.90	6'	1.77
		8'	1.00
Wall Mount			
2-26 PLC	1.50	10'	0.64
2-18 PLT	1.00	12'	0.45
2-26 PLT	1.50		
2-32 PLT	2.00		
2-42 PLT	2.66		

Using Conversion Tables

TO ADJUST FOOTCANDLES (FC) SHOWN IN DIAGRAMS AT LEFT, USE ONE OF THE FOLLOWING FORMULAS WITH LAMP CONVERSION FACTOR (LCF) AND HEIGHT CONVERSION FACTOR (HCF):

FC x LCF = FC with alternate lamp

FC x HCF = FC at alternate height

FC x LCF x HCF = FC with alternate lamp at alternate height

Specifications Subject to Change Without Notice.

Luminaire is Warranted to be Free of Defects in Materials and Workmanship for One Year From Invoice Date.

LENS, HOUSING, AND ALUMINUM BASE PLATE CARRY A LIFETIME GUARANTEE.



Made in USA



W.F. Harris Lighting

Innovative Lighting Designs Since 1970

P.O. Box 5023, Monroe, NC 28111-5023, USA
(704) 283-7477 (OPERATOR ASSIST) • (704) 283-6880 (FAX)
(800) 842-9345 (TOLL FREE)

e-mail: customerservice@wfharris.com
www.wfharrislighting.com

"W. F. Harris Lighting Will Not Sacrifice Quality for the Sake of Price."