

Lightbar Importing

CENCOM SAPPHIRE



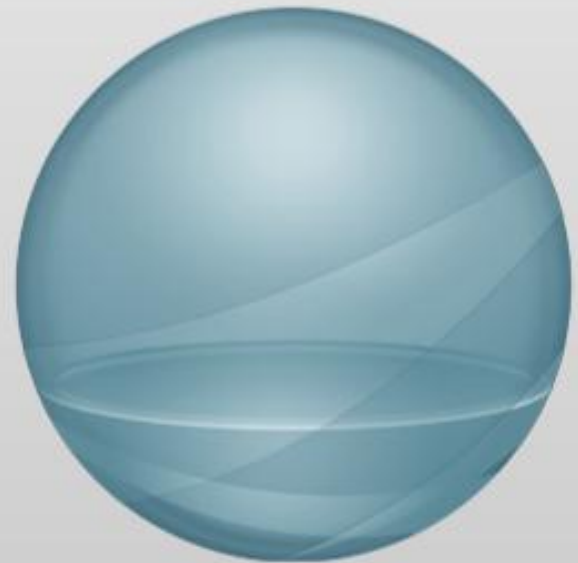
Create a new configuration.



Open an existing configuration.



Extract a configuration.



WHELEN[®]

ENGINEERING COMPANY, INC.

51 Winthrop Rd, Chester, CT 06412

860-526-9504 www.whelen.com



This Document is Copyright Protected © Copyright

This document contains products that are trademarked by the Whelen Engineering Company, Inc.

For training use, this document without modification may be reproduced.

Whelen Engineering Company reserves the right to modify it's products from those printed in this presentation. Refer to published product bulletins for specifications.

Cencom: Importing a Lightbar File

- Insure Computer has latest version of WeCad
- http://www.whelen.com/eng_apps/index.php



The screenshot shows a web browser window titled "Whelen Engineering Downloads". The main content area features the Whelen Engineering Company, Inc. logo in large red letters. Below the logo, there is a "DOWNLOADS" section with the following text:

Supported Browsers: Internet Explorer and Mozilla Firefox
Firefox users wishing to install WeCad must install the FFClickOnce Add-on before attempting the install. You can find the add-on here.

WeCad 5

WeCad Designer is Whelen Engineering's software package that brings your vision of a light bar to life. WeCad Designer is built using the latest technologies from Microsoft, allowing us to deliver state of the art products to you.

Recognizing the varied level of computing resources available to our customers, this web site will help you choose an installation best suited for your specific hardware needs.

At the bottom of the page, there are two buttons: "WeCad 5 FOR WINDOWS 2000" and "WeCad 5 FOR WINDOWS XPVISTA".

On the right side of the page, there is a screenshot of the WeCad Designer software interface. The window title is "WeCad Designer" and it shows a 3D rendering of a light bar with various components. The interface includes a menu bar (File, Tools, Window, Help), a toolbar, and a right-hand panel with a tree view showing "Light Heads" and "Traffic Adapters". The main workspace displays a circular arrangement of light bar components.

Cencom: Importing a Lightbar File

- Open Saved file or Start New Light Bar, must be WC series

Wecad Designer

File Tools Window Help

Getting Started

Welcome to Whelen WeCad

Configure a Light Bar

Start a New Light Bar Design

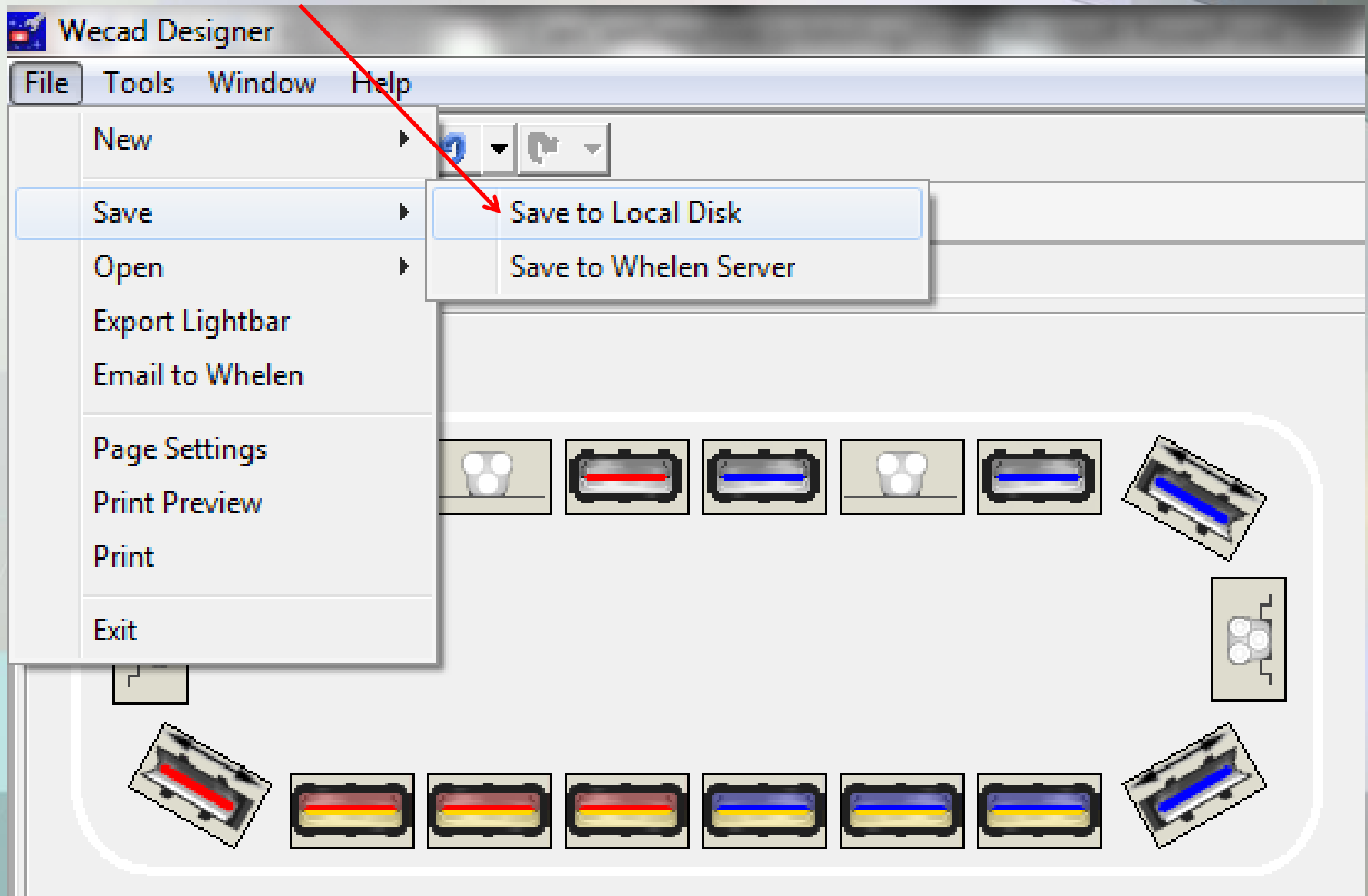
4500	9M	Freedom 2.0
Liberty LC	Justice CS	Liberty WC Duo
Liberty LC Duo	Liberty WC	Liberty WC Trio
Ultra	Freedom WC	
Freedom LC	Justice WC	

Open Saved Light Bar File

[Open](#)

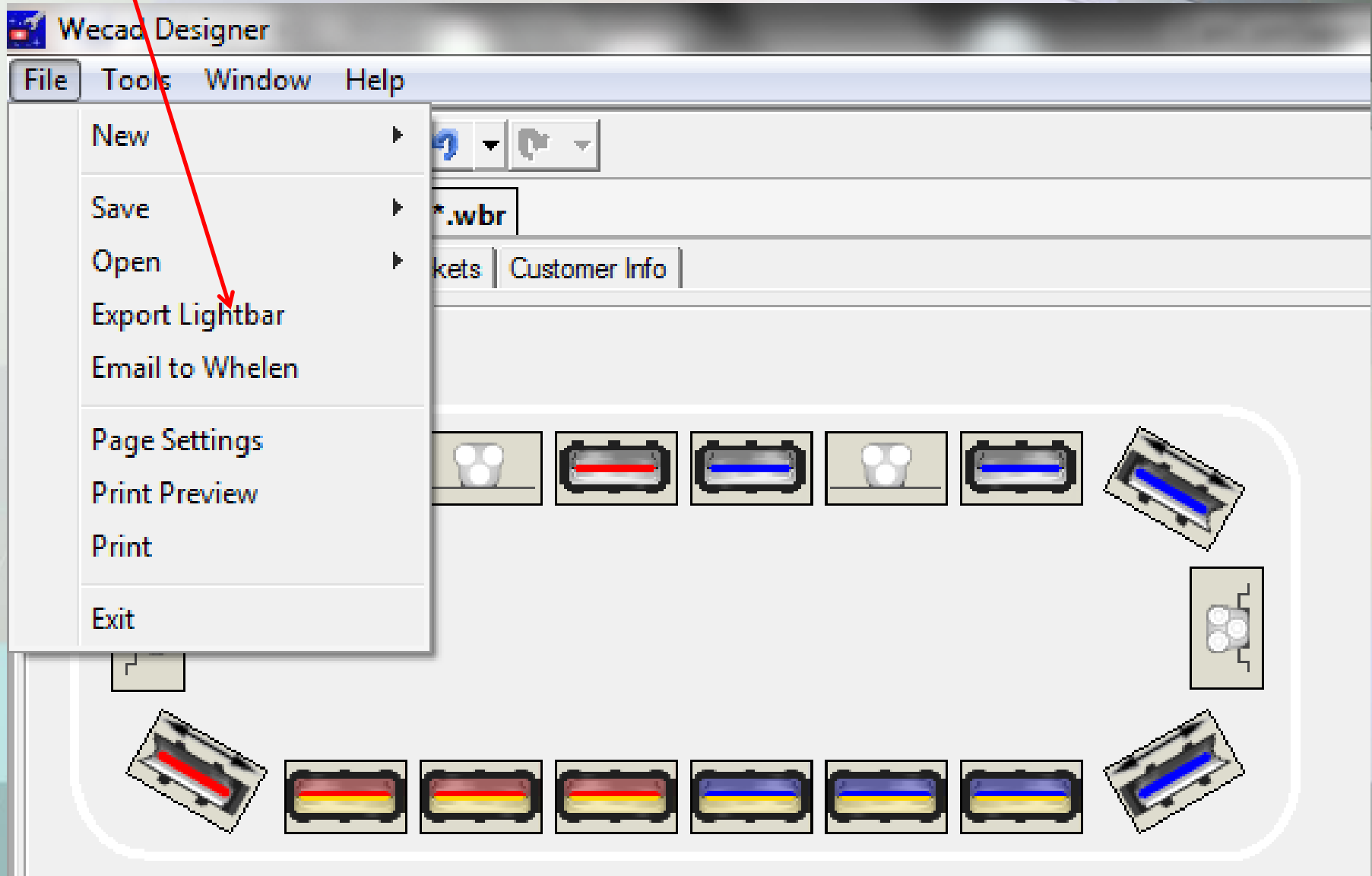
Cencom: Importing a Lightbar File

- Save as WeCad File (.wbr) for future ordering



Cencom: Importing a Lightbar File

➤ Export Lightbar for use in Cencom(.bxr)



Cencom: Importing a Lightbar File

➤ In Cencom Software, Choose Lightbar



➤ Choose Import Lightbar

Cencom: Importing a Lightbar File

➤ For further instruction see **Help in Cencom Software**

The screenshot displays the Cencom software interface. At the top, a menu bar includes icons for file operations and a 'WHELEN' logo. A 'File' menu is open, listing options like 'New', 'Open...', 'Save', 'Print...', and 'Help'. The 'Help' option is selected, and a sub-menu is visible with 'View Help File' (F1) and 'About CenCom Sapphire Whelen'. A red arrow points from the text 'Help in Cencom Software' to the 'View Help File' option. Below the menu, a virtual keypad is shown with buttons for 'IN1', 'IN2', 'PK', 'HR', 'STBY', 'RAD', 'HF', 'WAIL', 'YELP', 'T3', 'MAN', 'AH', 'DIR', 'FLSH', 'AUX1', 'AUX2', 'LP', 'SW14', 'SW15', 'SW16', 'SW17', 'GL', and a numeric keypad (1-3, Off, SL1, SL2, SL3). The 'Input' field shows '[STBY] Standby'. Below the keypad are 'Properties' and 'Lightbar' buttons. At the bottom, there are 'Import Lightbar' and 'Remove Lightbar' buttons, a video camera icon, and a lightbar diagram consisting of a ring of colored segments (red, white, blue, yellow). At the very bottom, there are buttons for 'Pattern View', 'Cruise View', 'Power View', and 'Deselect All'.

DISCUSSION