

WHELEN[®]



MANUFACTURED IN AMERICA

2017 HELICOPTER LIGHTING CATALOG



TABLE OF CONTENTS

INDEX / COMPANY PROFILE	i
LIGHTING REGULATIONS & POSITIONS	ii
SELF-CONTAINED POSITION/ANTI-COLLISION LIGHTS	1 - 3
XENON STROBE POWER SUPPLIES	4 - 5
FORWARD POSITION / ANTI-COLLISION	6 - 9
XENON STROBE LED ANTI-COLLISION ASSEMBLIES	10
SELF-CONTAINED LED ANTI-COLLISION LIGHTS	11 - 13
LED POSITION LIGHT ASSEMBLIES	14
LED TAIL POSITION LIGHT ASSEMBLIES	15
LED INFRA-RED ANTI-COLLISION LIGHTS	16
INFRA-RED ILLUMINATION IDENTIFICATION	17
EXTERIOR LIGHTING	18
PARMETHEUS PLUS SERIES	19 - 20
EXTERIOR LED LIGHTING	21
INTERNAL LED LIGHTING	22-25
SIRENS & SPEAKERS	26
COCKPIT LIGHTING	27
INTERIOR POST LIGHTS	28
INTERIOR LIGHTING	29-31
STROBE TO LED REPLACEMENT	32
LED FLASHER ASSEMBLIES	33
MISCELLANEOUS	34
LIGHTING APPLICATIONS	35
FSC & NIIN REFERENCE LIST	36



WHERE IT ALL BEGAN.....

It All Started 1952 in a Garage with the First Rotating Beacon. A privately owned company, Whelen has experienced positive growth for over 60 years. The pride and commitment of its work force, whose employment longevity averages over 22 years, is rewarded through a profit sharing plan established by the Whelen family since the company was founded. The development of the first aviation light helped launch Whelen into the automotive safety lighting industry as well.

Whelen currently provides safety lighting for Police, Fire, EMS, and DOT professionals as well as many other industries. The production volumes seen in the automotive sector have allowed Whelen to invest in the latest automated assembly equipment in order to compete world-wide. Last year Whelen purchased over 60 million LEDs for use in their extensive family of products. In the 1970s Whelen introduced the Outdoor Warning Siren ... totally electronic and capable of not just warning tones but also high-powered voice messages. The Mass Notification Division has saved lives around the world.

At Whelen Engineering, our goal is to bring innovative, life saving products to market more quickly while maintaining strict quality control throughout the process. We have accomplished this through a vertical manufacturing

initiative to eliminate or reduce out-sourcing; the use of robotics and state-of-the-art production equipment; and, perhaps most importantly, a motivated workforce of over 1400 employees. This allows us to meet and adapt to our customer's changing needs in the shortest amount of time.

- Two manufacturing facilities totaling over 1 million square feet.
- Largest staff of Design Engineers in the industry.
- Research and development.
- Partnering with OEMs on new vehicle design and product integration.
- Plastics injection molding machines from 30 to 2000 tons capacity.
- In-house plastics, hard-coating, metallizing, & sheet metal fabrication.
- On-site test lab for environmental dust, moisture, vibration, etc, acoustic anechoic sound chamber, industry certifications (SAE, AMECA, FAA to name a few).
- Sales and Technical Personnel are trained at the factory training center and return for updates on a regular schedule.
- Worldwide network of Sales, Service and Training.

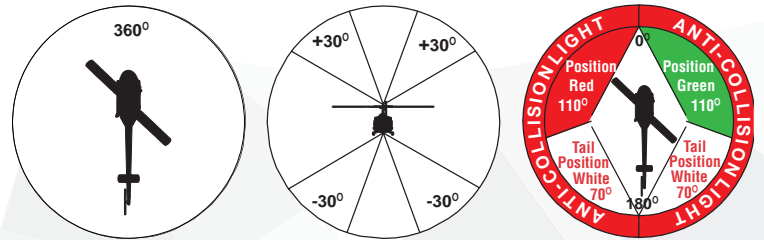
MANUFACTURING FACILITIES



Makers of Aviation, Automotive and Industrial Safety Lighting since 1952 Whelen Aviation Warning Products are all designed, assembled, tested and manufactured in the United States of America.
CONTACT US: WWW.WHELEN.COM or AVIATION@WHELEN.COM

ANTI-COLLISION AND POSITION LIGHT REQUIREMENTS, LOCATIONS, & DISTRIBUTION PATTERNS

All Rotorcraft must have an approved anti-collision light and position light system for nighttime operations. The position lights consist of an Aviation Red on the left side, an Aviation Green on the right and an Aviation White taillight. The anti-collision lighting system is required under FAR PART 91.205(c). All Rotorcraft PRIMARY anti-collision lights are Red in color. Supplemental lighting may be provided or installed that include white flashing lights. Rotorcraft manufactured in the mid-1970's and earlier likely comply with the 100 effective candela standard applicable at that time.



INSTALLATION LOCATIONS

Fuselage-Sides:

Some Rotorcraft can make use of fuselage mounted combination lighting which includes both the Position lights and Anti-Collision lights mounted within in a single fixture. Doing so removes the requirement of other lighting on the tail, horizontal stabilizer, the engine cowling area or the lower fuselage.

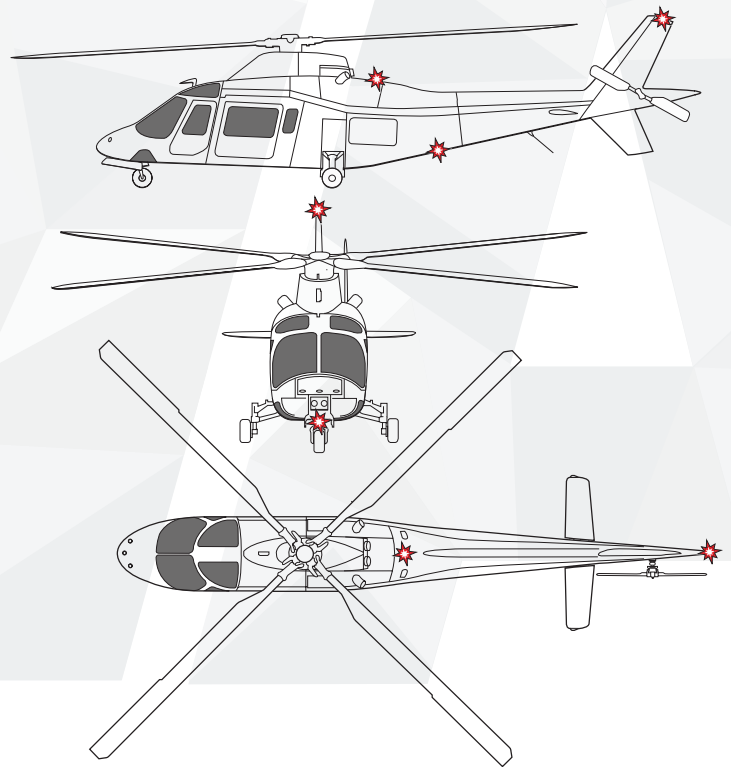
Fuselage:

Fuselage mounted units can be either self-contained with the power supply/ flashing assembly and lighthouse as one unit, or remote lighthouses run off a separate power supply/flashing assembly. Larger Rotorcraft, to meet the field of coverage, must have one on top of the fuselage and one on the bottom.

Vertical Fin:

Finally, if applicable, a single anti-collision light can be mounted on the vertical stabilizer. It can be either a self-contained style light or remote style light-head depending on the space available. Part 27 Type certified Helicopters were approved with a single Red light usually mounted at this location.

NOTE: All non-FAA approved parts in this catalog are signified by a (-) in the approval column. Parts without FAA approval may still be purchased, however, installation of these parts on U.S. Type Certificated products will require FAA approvals.



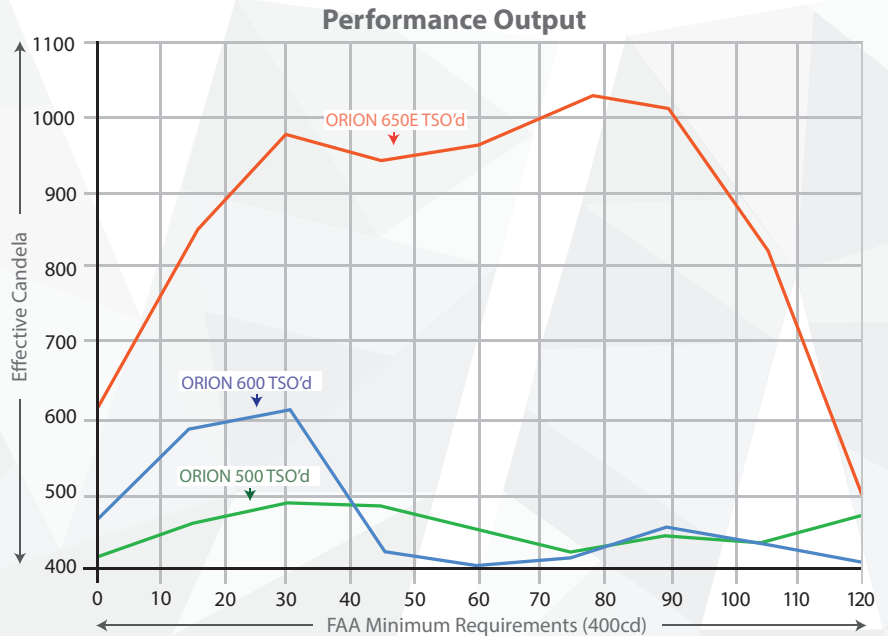
SELF-CONTAINED POSITION/ANTI-COLLISION LIGHTS



"...THE LATEST STATE-OF-THE-ART LED TECHNOLOGY AVAILABLE IN AN ALL INCLUSIVE PACKAGE."

ORION™ SERIES

Whelen Engineering is proud to introduce the ORION Series of TSO/ETSO approved LED aviation lighting. Incorporating the latest state-of-the-art LED Technology available in an all-inclusive package, the ORION series eliminates the need for external flasher boxes. Flush mountable for a wide variety of applications with minimal integration and easily retrofittable to the Whelen legacy strobe products. The ORION series is quite simply the brightest form of LED Anti-collision and Position lighting available.



ORION 500

Model	Part#	Description	Drawing#	Weight	Dimensions	Lens	Approvals
OR5001V	01-0771774V01	Taillight, 12 VDC, White	71774	0.29 lbs (132gm)	2.38" (60mm) x 1.75" (44mm) Dia	Clear Hard-coated Polycarbonate (Field Replaceable)	STC / TSO/ETSO-C96a Class II TSO/ETSO-C30c Type III
OR5002V	01-0771774V02	Taillight, 28 VDC, White					

Lens Part# 68-3951061A-31

FAR SPEC

A Technical Standard Order (TSO) is a minimum performance standard and does not equal compliance with the applicable Federal Aviation Regulations. In fact other manufacturers produce TSO approved items with operational characteristics that contradict the FARs. Whelen designs products as FAR-SPEC, Federal Aviation Regulations – Specified Lighting. FAR-SPEC is compliant with all applicable FAR's making your installation legal.

* Installers must follow the approved guidance for installation of the product to be FAR-SPEC compliant

NOTE: All non-FAA approved parts in this catalog are signified by a (—) in the approval column. Parts without FAA approval may still be purchased, however, installation of these parts on U. S. Type Certificated products will require additional FAA approvals.

SELF-CONTAINED POSITION/ANTI-COLLISION LIGHTS



ORION™ 600



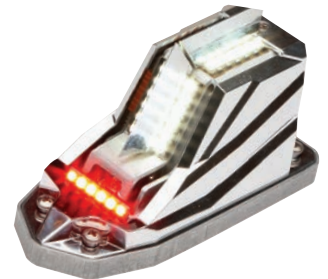
Model	Part#	Description	Drawing#	Weight	Dimensions	Colors	Lens	Approvals
OR6001G	01-0771733-01	Wingtip, 12 VDC, Green	71733	0.5 lbs. (227gm)	2.04" (52mm) x 1.78" (45mm) x 5.65" (144mm)	Aviation Red Aviation Green Aviation White	Clear Polycarbonate Hard-coat (Field Replaceable)	FAA TSO-C96a, TSO-C30c Types II & III, E-TSO
OR6001R	01-0771733-02	Wingtip, 12 VDC, Red						FAA TSO-C96a, TSO-C30c Types I & III, E-TSO
OR6002G	01-0771733-11	Wingtip, 28 VDC, Green						FAA TSO-C96a, TSO-C30c Types II & III, E-TSO
OR6002R	01-0771733-12	Wingtip, 28 VDC, Red						FAA TSO-C96a, TSO-C30c Types I & III, E-TSO
Lens Part#		02-0371773-03						

ORION 650



Model	Part#	Description	Drawing#	Weight	Dimensions	Colors	Lens	Approvals
OR6501G	01-0790725-01	Wingtip, 12 VDC, Green	90725	.3 lbs. (136gm)	1.79" (45mm) x 3.95" (100mm) x 1.68" (43mm)	Aviation Red (left), Aviation Green (right) Aviation White	Clear Polycarbonate Hard-coat (Field Replaceable)	TSO/ETSO-C96a Class III / TSO/ETSO-C30c Type II
OR6501R	01-0790725-02	Wingtip, 12 VDC, Red						TSO/ETSO-C96a Class III / TSO/ETSO-C30c Type I
OR6502G	01-0790725-11	Wingtip, 28 VDC, Green						TSO/ETSO-C96a Class III / TSO/ETSO-C30c Type II
OR6502R	01-0790725-12	Wingtip, 28 VDC, Red						TSO/ETSO-C96a Class III / TSO/ETSO-C30c Type I
Lens Part#		01-0251094-00						

ORION 650E



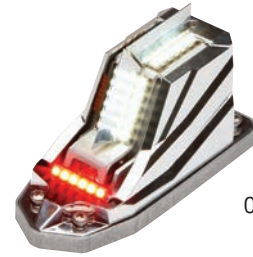
Model	Part#	Description	Drawing#	Weight	Dimensions	Colors	Lens	Approvals
OR6501GE	01-0790701-01	Embedded, 12 VDC, Green	90701	.26 lbs. (118gm)	1.67" (42mm) x 3.85" (98mm) x 2.20" (56mm)	Aviation Red (left), Aviation Green (right) Aviation White	-	TSO/ETSO-C96a Class II / TSO/ETSO-C30c Type II
OR6501RE	01-0790701-02	Embedded, 12 VDC, Red						TSO/ETSO-C96a Class II / TSO/ETSO-C30c Type I
OR6502GE	01-0790701-11	Embedded, 28 VDC, Green						TSO/ETSO-C96a Class II / TSO/ETSO-C30c Type II
OR6502RE	01-0790701-12	Embedded, 28 VDC, Red						TSO/ETSO-C96a Class II / TSO/ETSO-C30c Type I

NOTE: All non-FAA approved parts in this catalog are signified by a (—) in the approval column. Parts without FAA approval may still be purchased, however, installation of these parts on U. S. Type Certificated products will require additional FAA approvals.

SELF-CONTAINED POSITION/ANTI-COLLISION LIGHTS

ORION™ SERIES CROSSOVER CHART

Legacy Product Part Number	Legacy Product Model Number	Mounting Location	Orion Replacement Model Number		
01-0770054-01	A650PG28	Within Faring	01-0790701-11 / 01-0790701-12 OR6502GE / OR6502RE *NOTE Not to be mounted on exterior of aircraft		
01-0770054-03	A650PR28				
01-0771110-03	7111003				
01-0771110-04	7111004				
01-0770001-42	W1285PG28				
01-0770001-52	W1285PR28				
01-0771105-03	7110503				
01-0771105-04	7110504				
01-0770054-00	A650PG14			Within Faring	01-0790701-01 / 01-0790701-02 OR6501GE / OR6501RE *NOTE Not to be mounted on exterior of aircraft
01-0770054-02	A650PR14				
01-0771110-01	7111001				
01-0771110-02	7111002				
01-0770001-41	W1285PG14				
01-0770001-51	W1285PR14				
01-0771105-01	7110501				
01-0771105-02	7110502				
01-0770054-01	A650PG28	Wingtip Mounted	01-0790725-11 / 01-0790725-12 OR6502G/ OR6502R		
01-0770054-03	A650PR28				
01-0771110-03	7111003				
01-0771110-04	7111004				
01-0770001-42	W1285PG28				
01-0770001-52	W1285PR28				
01-0771105-03	7110503				
01-0771105-04	7110504				
01-0770054-00	A650PG14			Wingtip Mounted	01-0790725-01 / 01-0790725-02 OR6501G/ OR6501R
01-0770054-02	A650PR14				
01-0771110-01	7111001				
01-0771110-02	7111002				
01-0770001-41	W128514				
01-0770001-51	W128514				
01-0771105-01	7110501				
01-0771105-02	7110502				
01-0790006-03	A600PR28	Wingtip Mounted	01-0771733-11 / 01-0771733-12 OR6002G/ OR6002R		
01-0790340-01	A600PG28				
01-0790340-03	9034003				
01-0790340-04	9034004				
01-0790006-02	A600PR14	Wingtip Mounted	01-0771733-01 / 01-0771733-02 OR6001G/ OR6001R		
01-0790006-00	A600PG14				
01-0790340-01	9034001				
01-0790340-02	9034002				
01-0770024-00	A500AV14	Tail Mounted	01-0771774V01 OR5001V		
01-0770034-00	A555AV14				
01-0770024-01	A500AV28	Tail Mounted	01-0771774V01 OR5002V		
01-0770034-01	A555AV28				



ORION650E



ORION650



ORION600



ORION500

NOTE: Any highlighted RED ITEMS will require extra wiring for Anti-Collision function of Orion Series



HOW TO CHOOSE A POWER SUPPLY AND ABOUT COMETFLASH®

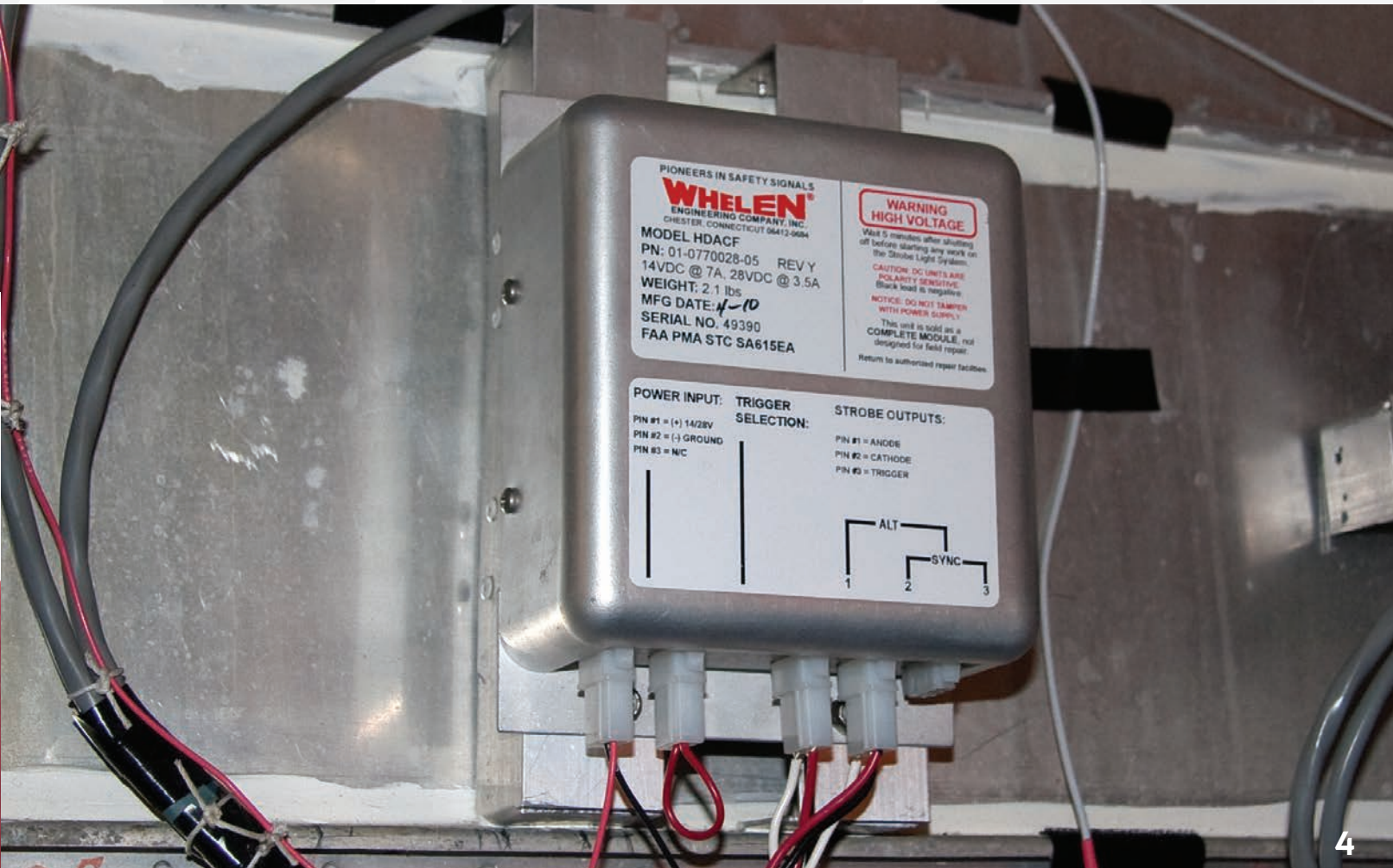
The power supply needed depends on the application, and the mounting location. Model HDACF Series is a fuselage mounted power supply that will power two or three lights. Model A490ATSC Series is designed for installation adjacent to the strobe lighthouse and will power one light assy. Model A490TCF Series is the most economical power supply when adding only one light. It mounts adjacent to the strobe lighthouse assembly (not legal for light output with Red strobe light). Most other Whelen power supplies are application specific, contact factory for details. Unless otherwise noted, all power supplies are CometFlash. Whelen Engineering is proud to have introduced the CometFlash CF, a major advancement in the field of safety lighting. By pulsing the flash tube four times in rapid succession, the effective "on-time" of the strobe is increased from 2/1000 of a second to 4/10 of a second. This increases your airplane's visibility. The development of the CometFlash reflects Whelen's dedication to safety.

HDACF STROBE POWER SUPPLY

Model HDACF Series provides simultaneous flashing, alternate flashing or both. It will operate one, two or three strobe lighthouses. Operating the wingtip strobes in the alternating mode will provide an accumulated 42 joules of power to each light. When in the simultaneous mode, the accumulated power to each light is 21 joules. In the three light mode, the wingtips will flash simultaneously at an accumulated 21 joules each, they alternate with a third light operating at an accumulated 42 joules. On the trigger selector outlet, a switch mounted in place of the jumper will allow wingtip outlets 2 & 3 to be turned off, while the tail outlet 1 will remain on. This function is commonly used when the third light is for ground operations. This power supply will operate from 10 to 30 VDC.



Model	Part#	Description	Drawing#	Weight	Dimensions	Current Draw	Approvals
HDACF	01-0770028-05	A413AHDACF power supply	70028	2.1 lbs. (953gm)	2.37" (60mm) x 5.3" (135mm) x 5.40" (137mm)	7.0 amps @ 14 VDC; 3.5 amps @ 28 VDC	FAA/PMA



XENON STROBE POWER SUPPLIES



A490ATSC STROBE POWER SUPPLY

Model A490ATSC operates one strobe lighthouse. Its compact size allows mounting in the wingtip and/or the tail, adjacent to the lighthouse. It produces an accumulated 34 joules of power and can be equipped to flash simultaneously with up to 5 other like units by connecting an 18 gauge wire between outlet 3 on the input power connector. This power supply will operate from 10 to 30 VDC.

Model	Part#	Description	Drawing#	Weight	Dimensions	Current Draw	Approvals
A490ATSC	01-0770062-03	A490ATSCF power supply	70062	1.7 lbs. (771gm)	5.0" (127mm) , x 3.12" (79mm), x 3.06" (78mm)	4.0 amps @ 14 VDC; 2.0 amps @ 28 VDC	FAA/PMA



90079 SERIES STROBE POWER SUPPLY

90079 Series is similar to the HDACF series, but has military connectors. Connectors 2 & 3 (wingtips) will operate simultaneously and will alternate with connector 1 (tail). When operating two lights, use connectors 1 & 2 to operate in the alternating mode.

Model	Part#	Description	Drawing#	Weight	Dimensions	Current Draw	Approvals
9007904	01-0790079-04	42 joule, CometFlash, replaces Grimes 60-1750-1 & 3	90079	2.3 lbs. (1043gm)	5.50" (140mm), x 5.0" (127mm), x 2.40" (61mm)	7 amps @14 VDC; 3.5 amps @ 28 VDC	FAA/PMA
9007906	01-0790079-06	42 joule, CometFlash, socket outputs, with add on mounting brackets					-



HDHCF STROBE POWER SUPPLY

Model HDHCF provides simultaneous flashing, alternate flashing or both (see HDACF for functions). It directly replaces factory installed units on Hughes 500 Series Helicopters. Unit can directly replace 60-1431 -1 & -3 power supplies without wiring or baseplate modifications. This power supply will operate from 10 to 30 VDC.

Model	Part#	Description	Drawing#	Weight	Dimensions	Current Draw	Approvals
HDHCF	01-0770117-01	Power supply A414AHDHCF	70117	2.3 lbs. (953gm)	2.37" (60mm) x 5.0" (127mm) x 5.50" (140mm)	7.0 amps @ 14 VDC; 3.5 amps @ 28 VDC	FAA/PMA

NOTE: All non-FAA approved parts in this catalog are signified by a (—) in the approval column. Parts without FAA approval may still be purchased, however, installation of these parts on U. S. Type Certificated products will require additional FAA approvals.

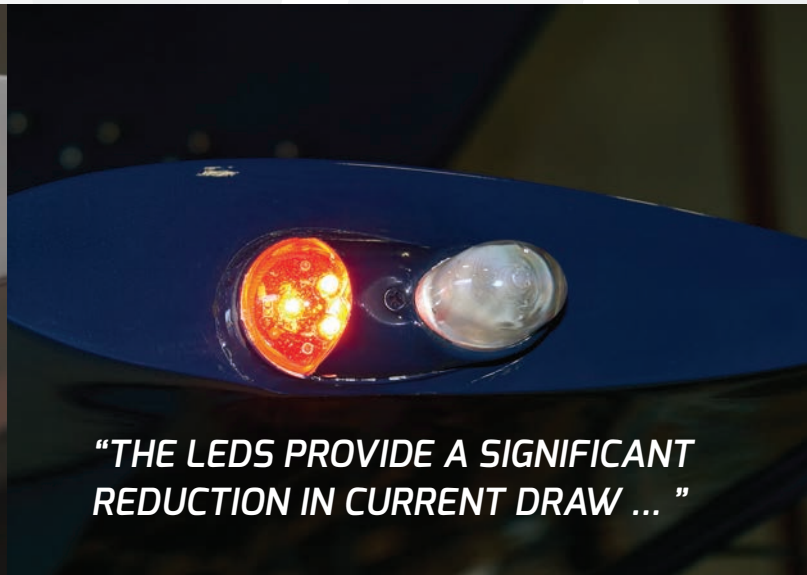
FORWARD POSITION / ANTI-COLLISION

7110 SERIES STROBE ANTI-COLLISION / LED POSITION LIGHT ASSEMBLY

7110 Series is a wingtip mounted strobe Anti-Collision/Position light assembly utilizing LEDs for the Forward Position lights. The LEDs provide a significant reduction in current draw over conventional position light bulbs. The strobe light lens assembly is radio shielded for maximum EMI/RFI protection. Direct replacement (exact footprint) for the Whelen Model A650PG/PR series without replacing the current strobe power supply. Navigation light portion is wired with flying leads.



Model	Part#	Description	Drawing#	Weight	Dimensions	Current Draw	LED Colors	Lens	Approvals
7111001	01-0771110-01	Position Green, 14 VDC	71110	0.5lbs. (226gm) 14 VDC 0.50 lbs. (227gm) 28 VDC	Exposed Height: 2.35" (60mm) x 1.78" (45mm) x 3.88" (99mm)	LED Navigation Light Power Consumption: 0.25 amps @ 14 VDC or 28 VDC	Aviation Red Aviation Green	Clear RFI Coated Glass: Strobe Clear Polycarbonate: Navigation Lights	FAA TSO-C96a Class II / TSO-C30c Type II
7111002	01-0771110-02	Position Red, 14 VDC							FAA TSO-C96a Class II / TSO-C30c Type I
7111003	01-0771110-03	Position Green, 28 VDC							FAA TSO-C96a Class II / TSO-C30c Type II
7111004	01-0771110-04	Position Red, 28 VDC							FAA TSO-C96a Class II / TSO-C30c Type I



"THE LEDS PROVIDE A SIGNIFICANT REDUCTION IN CURRENT DRAW ..."

71172 SCHWEIZER SERIES

71172 Schweizer Series, SAC product approved. Contact Schweizer customer support. Direct replacement for Whelen A650PRD1/2.



Model	Part#	Description	Drawing#	Weight	Dimensions	LED Colors	Lens	Approvals
7117203	01-0771172-03	SAC POS/ACL Green	70024	0.36 lbs. (163gm)	Exposed Height: 2.35" (59.7mm) x 1.78" (45.2mm) x 3.88" (98.6mm)	Aviation Green Aviation Red	Glass	-
7117204	01-0771172-04	SAC POS/ACL Red						

NOTE: All non-FAA approved parts in this catalog are signified by a (—) in the approval column. Parts without FAA approval may still be purchased, however, installation of these parts on U. S. Type Certificated products will require additional FAA approvals.

FORWARD POSITION / ANTI-COLLISION



90340 SERIES STROBE ANTI-COLLISION / LED POSITION LIGHT ASSEMBLY

90340 series is an all inclusive wingtip mounted strobe Anti-Collision/Position light assembly utilizing LEDs for both the Forward & Tail Position lights, eliminating the need for a tail mounted position light. The LEDs provide a significant reduction in current draw over conventional position light bulbs. The strobe light lens assembly is radio shielded for maximum EMI/RFI protection. Direct replacement (exact footprint) for the Whelen Model A600PG/PR series without replacing the current strobe power supply. Single set of flying leads operates both Forward & Tail Nav on 28 VDC version, and one set each of flying leads for the Forward & Tail Nav on the 14 VDC version.

Model	Part#	Description	Drawing#	Weight	Dimensions	Current Draw	LED Color	Lens	Approvals
9034001	01-0790340-01	Position Green, 14 VDC	90340	0.45 lbs. (204gm)	Exposed Height: 2.46" (62mm) x 1.87" (47mm) x 5.69" (145mm)	LED Navigation Light Power Consumption: 0.5 amps @ 14 VDC, 0.25 amps @ 28 VDC	Aviation Red Aviation Green Aviation White	Clear RFI coated glass on strobe Clear polycarbonate on Navigation lights	FAA TSO-C96a Class II / TSO-C30c Types II & III
9034002	01-0790340-02	Position Red, 14 VDC							FAA TSO-C96a Class II / TSO-C30c Types I & III
9034003	01-0790340-03	Position Green, 28 VDC							FAA TSO-C96a Class II / TSO-C30c Types II & III
9034004	01-0790340-04	Position Red, 28 VDC							FAA TSO-C96a Class II / TSO-C30c Types I & III



FORWARD POSITION / ANTI-COLLISION

90612 SERIES ALL LED FORWARD AND AFT POSITION / RED / ACL / IR ASSEMBLY

Smallest TSO approved all LED 150 effective POS/ACL assembly In the world!
Same as Model 90569, the 90612 is a Forward and Aft LED POS/Red ACL assembly with Infra-Red LED Ground Recognition light. Uses Flasher 7145702. Available in 28 VDC only.



Model	Part#	Description	Drawing#	Weight	Dimensions	Current Draw	Colors	Lens	Approvals
9061201	01-0790612-01	LED POS (Green)/ ACL (Red), GRN REC (IR)	90612	0.5 lbs (227gm)	Exposed Height: 2.01" (50.8mm) x 1.77" (45mm) x 5.61" (142mm)	(See 71457) 0.23 amps fwd & aft pos 0.75 amps average ACL	Aviation Green Aviation Red	Clear Polycarbonate	FAA TSO-C96a Class II / TSO-C30c Types II & III
9061202	01-0790612-02	LED POS (Red)/ ACL (Red), GRN REC (IR)							FAA TSO-C96a Class II / TSO-C30c Types I & III

71457 LED FLASHER ASSEMBLY

Model 71457 LED Flasher/Current source is designed to be mounted within 12" of the lighthead assembly. Unit complies with TSO-C96a Class I (150 ecp) anti-collision light requirements, and TSO-C30c forward position light requirements. Power Input Connector sold separately, entry level unit (shown) uses CPC 205841-1 connectors. Available in 28 VDC only.



Model	Part#	Description	Drawing#	Weight	Dimensions	Current Draw	Approvals
7145702	01-0271456-00	LED Flasher/Current Source, 28 VDC	71457	0.6 lbs (272gm)	1.38" (35.05mm) x 3.67" (93.22mm) x 4.6" (116.84mm)	(0.23 amps fwd & aft pos), (0.73 amps average ACL)	FAA TSO-C96a TSO-C30c* * with Model 90612

90610 SERIES ANTI-COLLISION

Smallest self-contained all LED 150 Effective POS / ACL assembly in the world Model 90610 comes with Forward and Aft LED POS / Red ACL with Infra-Red LED Ground Recognition Light. Available in 28 VDC only.



Model	Part#	Description	Drawing#	Weight	Dimensions	LED Colors	Lenses	Approvals
90610	-	-	90610	0.81 lbs. (367gm)	Exposed Height: 2.01" (50.8mm) x 1.77" (44.96mm) x 5.61" (142.49mm)	Red Green White	Clear Polycarbonate	FAA TSO-C96a Class I / TSO-C30c Types I, II & III

A625 SERIES TAIL STROBE ANTI-COLLISION & TIP-TANK LIGHT ASSEMBLY

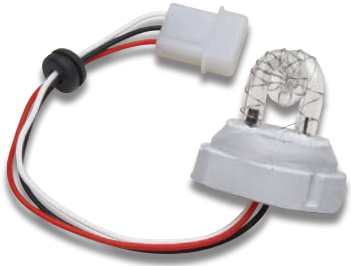
A625 Series has many different applications. It can be used for aircraft with tip-tanks, with enclosed Position lights (under a fairing), or as an add-on strobe on the wing or the tail. Available in a radio-shielded version.



Model	Part#	Description	Drawing#	Weight	Dimensions	LED Colors	Lenses	Approvals
A625	01-0770058-03	Standard unit, Clear lens	70058	0.2 lbs. (91gm)	Exposed Height: 1.7" (43.18mm) x 2.12" (53.84mm)	Aviation White	Radio Shielded Glass	FAA/PMA
A625D	01-0770058-13	Radio-shielded, Clear lens NSN						-
A625R	01-0770058-04	Standard unit, Red lens						-
A625DR	01-0770058-14	Radio-shielded, Red lens						-
7005815	01-0770058-15	Radio-shielded, 3/C cable, 12" ground braid						-
7005816	01-0770058-16	Radio-shielded, 24" 3/C cable, with MS connector						-

NOTE: All non-FAA approved parts in this catalog are signified by a (—) in the approval column. Parts without FAA approval may still be purchased, however, installation of these parts on U. S. Type Certificated products will require additional FAA approvals.

FORWARD POSITION / ANTI-COLLISION



50626 SERIES STROBE TUBE ASSEMBLY

50626 Series strobe tube assemblies are used with model numbers listed in chart below:

Model	Part#	Description	Used on Models
5062600	36-0050626-00	Strobe tube assembly, 6" long	9011102
5062601	36-0050626-01	Strobe tube assy 6" long w/grommet	9034000 thru 07, 20, 21, & 7111001 thru 04
5062602	36-0050626-02	Strobe tube assy 12.5" long w/grommet	9034008, 09
5062603	36-0050626-00	Strobe tube assy 2" long w/grommet	9037501, 02



A610 SERIES FLASH TUBE & A612 GLASS LENS

A610 flash tube and A612 glass lens are used for installing wingtip strobes in single engine Cessnas 1972 and later. The existing position light retainer is modified to accommodate the lens, and the flash tube is mounted directly behind. The A612 lens unique magnifying design increases the horizontal plane's light intensity by two to three times. They are used for custom installations or spare parts for existing light assemblies.

Model	Part#	Description	Drawing#	Weight	Dimensions	Lens	Approvals
A610	02-0250276-00	Standard unit, 6" leads NSN	A610: 50276	0.09 lbs. (41gm)	1.6" (40.64mm) x 1.12" (28.39mm) x 1.56" (39.64mm)	-	
A610M	02-0250276-03	Molex connector, 6" leads					
5027601	02-0250276-01	14" leads					
5027602	02-0250276-02	12.5" leads					
A612	68-2290005-30	Standard Clear lens	A612: 90005	0.08 lbs. (36gm)	1.68" (42.67mm) x 1.17" (29.71mm) x 1.75" (44.45mm)	Clear	-
A612D	68-2290005-34	Radio-shielded, Clear lens				RF Coated Red	
A612R	68-2290005-50	Standard Red lens				Red	
A612DR	68-2290005-54	Radio-shielded, Red lens				RF Coated Red	



A450 SERIES REMOTE STROBE LIGHT

Model A450 remote strobe light assembly is compatible with all Whelen power supplies. It can be installed on the fuselage or the vertical fin. The Glass lens (Clear only) makes the assembly suitable for use in severe vibration, chemical and moisture conditions (i.e. agricultural aircraft). Requires either the model H102 or model H103 mounting adapter.

Model	Part#	Description	Drawing#	Weight	Dimensions	Color	Lens	Approvals
A450	01-0770032-00	Standard assembly, Clear lens	70032	0.3 lbs. (136gm)	Exposed Height: 2.15" (56mm) Diameter: 2.58" (66mm)	Aviation White	Clear Glass	FAA/PMA



XENON STROBE / ANTI-COLLISION ASSEMBLIES

A470A SERIES REMOTE STROBE LIGHT

A470A Series Remote Strobe light assembly is compatible with all Whelen power supplies. It can be installed on the fuselage or the vertical fin. The unique polycarbonate optic lens and reflector design re-directs stray light rays into the horizontal plane to provide the maximum 360° of uniform light coverage possible. Available in three different lens colors: Aviation Red, Aviation White and split Aviation Red/White. Available in radio-shielded configurations. All assemblies require either the model H102 or H103 mounting adapter.

NOTE - * THE A469AD SHIELDED FLASH TUBE ASSEMBLY CAN NOT BE USED WITH:

The new A470AD Remote Strobe Head Assembly as shown, the new A402AD Lens, or the new HR,DFA Self-Contained Strobe Light Assembly.

Note: 06-190125 is not the part number for the A469B but a mold number, order A469B
See Aviation Installation Guide for more information.



Model	Part#	Description	Drawing#	Weight	Dimensions	LED Color	Lens	Approvals
A470AR	01-0770019-18	Standard assembly, Red lens NSN (a)	70019	0.3 lbs. (136gm)	3.75" (95mm) x 2.58" (66.53mm)	Aviation Red, Aviation White Split (Aviation Red/White)	Polycarbonate	FAA/PMA
A470AW	01-0770019-19	Standard assembly, White lens NSN (b)						FAA/PMA
A470AS	01-0770019-20	Standard assembly, split Red/White lens NSN (*)						FAA/PMA
A470ADR	01-0770019-21	Radio-shielded assembly, Red lens						FAA/PMA
A470ADW	01-0770019-22	Radio-shielded assembly, White lens						FAA/PMA
A470ADS	01-0770019-23	Radio-shielded ass'y, split Red/White lens NSN (c)						FAA/PMA
(a) 6220-14851001, (b) 6340-14331362, (c) 6220-13844609								

A500A SERIES COMBINATION STROBE / TAIL NAVIGATION LIGHT

A500A Series Combination Strobe/Tail Navigation Light is used when the wingtip anti-collision lights are mounted in an enclosure and can't provide 360° of strobe coverage. It is a direct replacement for the standard tail position light. Available in a radio-shielded version. Voltage (14 or 28) and mounting (horizontal or vertical) must be specified when ordering.



Model	Part#	Description	VDC	Drawing#	Weight	Dimensions	LED Color	Lens	Approvals
A500AV14	01-0770024-00	Vertical mount	14	70024	0.3 lbs. (136gm)	1.7" (43mm) x 1.5" (38mm)	Aviation White	Glass	FAA/PMA, FAA
A500AV28	01-0770024-01	Vertical mount	28						FAA/PMA, FAA
A500AH14	01-0770024-02	Horizontal mount	14						FAA/PMA, FAA
A500AH28	01-0770024-03	Horizontal mount	28						FAA/PMA, FAA
A500AVD1	01-0770024-04	Vertical mount, radio-shielded	14						FAA/PMA, FAA
A500AVD2	01-0770024-05	Vertical mount, radio-shielded	28						FAA/PMA, FAA
A500AHD1	01-0770024-06	Horizontal mount, radio-shielded	14						FAA/PMA, FAA
A500AHD2	01-0770024-07	Horizontal mount, radio-shielded	28						-
A500ASP2	01-0770024-25	Vertical mount, 50" cables	28						no connectors
A500ABV1	01-0770024-16	Beech Special, MS connector	14						-
A500ABV2	01-0770024-15	Beech Special, MS connector	24						-

H102 ADAPTER

Designed for the model A470A or model A450 series remote strobe lighthouse assemblies. The model H102 allows flush mounting of the lighthouse to the skin of the fuselage or the vertical stabilizer on later model Cessna Single engines. The H103 is designed for strobe assemblies to be installed in the standard 3-3/4" (95mm) dia. rotating beacon mounting hole.



Model	Part#	Description	Drawing#	Weight	Dimensions	Approvals
H102	07-730068-000	Flush mount adapter NSN	30068	-	2.5" (38mm) Dia	FAA/PMA
H103	11-230079-000	Rotating beacon mount adapter	30079			-

NOTE: All non-FAA approved parts in this catalog are signified by a (—) in the approval column. Parts without FAA approval may still be purchased, however, installation of these parts on U. S. Type Certificated products will require additional FAA approvals.

SELF-CONTAINED LED ANTI-COLLISION LIGHTS

90520 SERIES LED FLASHING BEACON

90520 Series beacons are FAA TSO approved, self-contained LED Anti-Collision lights (Ref. Class III - 100 effective candlepower). They are designed to replace strobe lightheads as small as the A470A with available models to replace HR self-contained beacons (HRCFA) or our legacy 70900 LED beacon. Mounting plate included with assembly. See models below.

Models -01, -04, -05, -14, -15, -51, -55: Ship with 12" Flying Leads. **Models** -07, -17, -08, -18: MS3102R10SL-3P Connector. **Models** -04, -14, -08, -18, -55: 3-3/4" opening designed to fit inside an A440 mounting adapter, mounting designed to replace existing beacons utilizing a 5 Hole mounting pattern on 4.656 dia. bolt circle (Whelen 70285 series/7090501 series or 70900 with A440 adapter). **Models** -05, -15, -07, -17: 3-3/4" opening designed to fit inside an A440 mounting adapter, mounting holes to fit in place of rotating beacons, Whelen model HRCFA, or 7090004, -05 series LED beacons.



Model	Part#	Description	Drawing#	Weight	Dimensions	Current Draw	LED Colors	Lens	Approvals
9052000	01-0790520-00	LED Red/White, 28 VDC, no adapt MateNLock	90520	0.6 lbs. (272gm)	3.74" (95mm) (-01 & 51) x 2.6" (66mm) Diameter	1.34 amps avg., 6.0 amps peak	Split Aviation Red/White	Clear Polycarbonate	FAA TSO-C96a Class III
9052001	01-0790520-01	LED Red/White, 28 VDC, A470A mount		0.65 lbs. (294gm)					FAA TSO-C96a Class III
9052004	01-0790520-04	LED Red/White, 28 VDC, 5 hole mount		0.8 lbs. (363gm)					FAA TSO-C96a Class III
9052005	01-0790520-05	LED Red/White, 28 VDC, 3.75" adapt		0.75 lbs. (340gm)					FAA TSO-C96a Class III
9052007	01-0790520-07	LED Red/White, 28 VDC, 3.75" adapt		0.87 lbs. (395gm)					FAA TSO-C96a Class III
9052008	01-0790520-08	LED Red/White, 28 VDC, 5 hole mount		0.87 lbs. (395gm)					FAA TSO-C96a Class III
9052014	01-0790520-14	LED Red/White, 28 VDC, 5 hole mount		0.8 lbs. (363gm)					FAA TSO-C96a Class III
9052015	01-0790520-15	LED Red/White, 3.75" adapt		0.75 lbs. (340gm)					
9052017	01-0790520-17	LED Red/White, 3.75" adapt		0.87 lbs. (395gm)					FAA TSO-C96a Class III
9052018	01-0790520-18	LED Red/White, 28 VDC, 5 hole mount		0.87 lbs. (395gm)					FAA TSO-C96a Class III
9052050	01-0790520-50	LED Red/White beacon, 14 VDC, no adapt MateN-		0.6 lbs. (272gm)					FAA TSO-C96a Class III
9052051	01-0790520-51	LED Red/White, 14 VDC, A470A mount MateNLock		0.65 lbs. (294gm)					
9052055	01-0790520-55	LED Red/White, 14 VDC, 3.75" adapt		0.75 lbs. (340gm)					



71670 SERIES RED DUAL MODE LED ANTI-COLLISION (RO)

Model 71670 is a dual-mode red Anti-Collision Light with a reduced output feature. In 'normal' mode the beacon will flash at 100% output and functions much like model 71080. In 'reduced output' power mode the LED flashing is pulse-width modulated to less than 20% light output.

Model	Part#	Description	Drawing#	Weight	Dimensions	Current Draw	LED Colors	Lens	Approvals
7167001	01-0771670-010	LED anti-collision beacon 28 VDC	71670	0.54lbs (245gm)	Exposed Height: 3.09" (78mm) Base Diameter: 2.6" (66.04mm)	0.53 amps avg	Aviation Red	Clear Polycarbonate hardcoated	-



"...DESIGNED TO REPLACE STROBE LIGHTHEADS AS SMALL AS THE A470A WITH AVAILABLE MODELS TO REPLACE HR SELF-CONTAINED BEACONS."

SELF-CONTAINED LED ANTI-COLLISION LIGHTS



71080 SERIES LED BEACON FOR ROTORCRAFT

71080 Series beacons are FAA TSO compliant self-contained LED Anti-Collision lights (Ref. Class I - 150 effective candlepower). They are designed to replace a range of products. Refer to models and descriptions below.

Models -01, -04, -05, -14, -15, -20, -51, -55: Ship with 12" Flying Leads. **Models** -07, -17, -08, -18: MS3102R10SL-3P Connector. **Models** -04, -14, -08, -18: designed to replace existing beacons using 5-Hole mounting pattern on a 4.656 dia. bolt circle (Whelen 70285 series/7090501 series or 70900 with A440 adapter). **Models** -05, -15, -07, -17: 3 3/4" opening designed to fit inside an A440 mounting adapter, mounting holes to fit in place of rotating beacons, Whelen Model HRCFA, or 7090004, -05 series LED beacons.



Model	Part#	Description	Drawing#	Weight	Dimensions	Current Draw	LED Colors	Lens	Approvals
7108001	01-0771080-01	LED Red, 28 VDC, 2.6" mount	71080	0.65 lbs. (295gm) (-01 & -51)	Exposed Height: 3.74" (95mm) (-01 & 51) Diameter: 2.6" (66mm)	0.90 amps average, 4.0 amps peak @ 14 VDC & 0.45 amps average, 2.0 amps peak @ 28 VDC	Aviation Red	Clear Polycarbonate	FAA TSO-C96a Class I
7108051	01-0771080-51	LED Red, 14 VDC, 2.6" mount							FAA TSO-C96a Class I
7108004	01-0771080-04	LED Red, 28 VDC & 5-Hole mount							FAA TSO-C96a Class I
7108014	01-0771080-14	LED Red, 28 VDC & 5-Hole, lower mount							FAA TSO-C96a Class I
7108005	01-0771080-05	LED Red, 28 VDC, 3.75" adapter							FAA TSO-C96a Class I
7108015	01-0771080-15	LED Red, 28 VDC, 3.75" adapter, lower mount							FAA TSO-C96a Class I
7108007	01-0771080-07	LED Red, 28 VDC, 3.75" adapter, MS Conn.							FAA TSO-C96a Class I
7108017	01-0771080-17	LED Red, 28 VDC, 3.75" adapter, lower mount, MS Conn.							FAA TSO-C96a Class I
7108008	01-0771080-08	LED Red, 28 VDC & 5 hole mount, MS Conn.							FAA TSO-C96a Class I
7108018	01-0771080-18	LED Red, 28 VDC & 5 hole, lower mount, MS Conn.							FAA TSO-C96a Class I
7108055	01-0771080-55	LED Red, 14 VDC, 3.75" adapter	FAA TSO-C96a Class I						

NOTE: All non-FAA approved parts in this catalog are signified by a (—) in the approval column. Parts without FAA approval may still be purchased, however, installation of these parts on U. S. Type Certificated products will require additional FAA approvals.

SELF-CONTAINED LED ANTI-COLLISION LIGHTS



71410 SERIES WHITE LED ANTI-COLLISION BEACON

71410 LED White Anti-Collision beacons are FAA TSO approved and self-contained (unit meets rotorcraft minimum ACL standards Class I, 150 effective Cd). They are designed to replace 3-3/4" opening found with our HRCFA/SACF style strobe units and to replace rotating beacons, they also come with a narrow base allowing replacement of A470(A) and similar remote strobes (contact factory). 71410 Ships with 12" long flying leads, available in 28VDC only. (TSO-C96a, Class III Approved)

Model	Part#	Description	Drawing#	Weight	Dimensions	Current Draw	LED Colors	Lens	Approvals
7141005	01-077410-05	LED Anti-Collision, White Upper 3.75" Mount, 28 VDC	71410	0.66lbs (299gm)	Exposed Height: 3.92" (86.36mm) x 3.60" (91.44mm)	0.32 amps	Aviation White	Clear Polycarbonate	FAA TSO-C96a Class III
7141015	01-077410-15	LED Anti-Collision, White Lower 3.75" Mount, 28 VDC							FAA TSO-C96a Class III
7141001	01-077410-01	LED Anti-Collision, White Upper 2.5" Mount, 28 VDC							FAA TSO-C96a Class III
7141007	01-077410-07	LED Anti-Collision, White 3.75" with MS Connector, Upper Mount, 28 VDC							FAA TSO-C96a Class III
7141017	01-077410-17	LED Anti-Collision, White 3.75" with MS Connector, Lower Mount, 28 VDC							FAA TSO-C96a Class III
7141008	01-077410-08	LED Anti-Collision, White 5" Plate with MS Connector, Upper Mount, 28 VDC							FAA TSO-C96a Class III
7141018	01-077410-18	LED Anti-Collision, White 5" Plate with MS Connector, Lower Mount, 28 VDC							FAA TSO-C96a Class III



71460 SERIES BLUE LED FLASHING IDENTIFICATION BEACON

Model 71460 is a Blue LED flashing beacon that fits the 5-hole mounting pattern common to Rotorcraft. Unit is designed and follows the manufacturing/quality practices of 71080 and 90520 TSO'd Anti-Collision lights. No FAA certifications for Blue beacons. Unit ships with D38999 series connector integrated.

Model	Part#	Description	Drawing#	Weight	Dimensions	Current Draw	LED Colors	Lens	Approvals
714600	01-0771460-00	Blue LED Identification Light, 28 VDC	71460	0.6 lbs (272gm)	Exposed Height: 3.64" (92mm) x Mounting Diameter: 2.6" (66mm)	0.45 amps avg	Aviation Blue	Clear Polycarbonate	-
7146001	01-0771460-01			0.84 lbs (381gm)	Exposed Height: 3.74" (95mm) x Mounting Diameter: 5.14" (130.56mm)				-
7146002	01-0771460-02			Exposed Height: 3.77" (96mm) x Mounting Diameter: 3.6" (152mm)	-				



LED POSITION LIGHT ASSEMBLIES



71379 SERIES LED FORWARD POSITION LIGHT

71379 Series is an LED wingtip Forward Position light designed to be located under a fairing, but is suitable for external mounting as well. Replaces GRIMES A1815A and Whelen W1250. Product ships with 6" flying leads.

Model	Part#	Description	Drawing#	Weight	Dimensions	Current Draw	LED Colors	Lens	Approvals
7137901	01-0771379-01	LED Forward POS (Green), 28 VDC	71379	0.23lbs (104gm)	Exposed Height: 1.25" (32mm) x 1.25" (31.75mm) x 1.75" (44.45mm) x 2.31" (58.67mm)	0.25 amps @28 VDC	Aviation Red, Aviation Green	Clear Polycar- bonate	TSO-C30c Type II
7137902	01-0771379-02	LED Forward POS (Red), 28 VDC							TSO-C30c Type I
7137911	01-0771379-11	LED Forward POS (Green), 14 VDC		0.18lbs (82gm)					TSO-C30c Type II
7137912	01-0771379-12	LED Forward POS (Red), 14 VDC							TSO-C30c Type I

71105 SERIES LED POSITION LIGHT ASSEMBLY

71105 Series are fully FAA TSO approved Forward Position lights. LEDs provide a significant reduction in electrical current draw over conventional light bulbs. Direct replacement for Whelen Model W1285 series (Version STC'd on Learjet Aircraft).



Model	Part#	Description	Drawing#	Weight	Dimensions	Current Draw	LED Colors	Lens	Approvals
7110501	01-0771105-01	Position Green, 14 VDC	71105	0.20 lbs. (91gm) 14 VDC 0.25 lbs. (113gm) 28 VDC	Exposed Height: 1.08" (27mm) x 1.08" (27.43mm) x 1.77" (44.95mm) x 3.88" (98.55mm)	0.25 amps @ 14 VDC or 28 VDC	Aviation Red, Aviation Green	Clear Polycar- bonate Hardcoat	FAA TSO-C30c Type II
7110502	01-0771105-02	Position Red, 14 VDC							FAA TSO-C30c Type I
7110503	01-0771105-03	Position Green, 28 VDC							FAA TSO-C30c Type II
7110504	01-0771105-04	Position Red, 28 VDC							FAA TSO-C30c Type I

90377 SERIES LED POSITION LIGHT ASSEMBLY

90377 Series is a wingtip mounted Position light assembly utilizing LEDs for both the forward (Red/Green) & tail position (White) lights, eliminating the need for a tail mounted position light. The LEDs provide a significant reduction in current draw over conventional position light bulbs. Direct replacement (exact footprint) for the Whelen Model A675PG/PR series.



Model	Part#	Description	Drawing#	Weight	Dimensions	Current Draw	LED Colors	Lens	Approvals
9037701	01-0790377-01	Position Green, 14 VDC set of flying leads operates forward and tail nav	90377	0.35 lbs. (159gm)	Exposed Height: 1.08" (27mm) 1.08" (27mm) H x 1.87" (47mm) W x 5.69" (145mm) L	0.5 amps @14 VDC 0.25 amps @ 28 VDC	Aviation Red, Aviation Green, Aviation White	Clear Hard- coated Polycarbon- ate	FAA TSO-C30c Types II & III
9037702	01-0790377-02	Position Red, 14 VDC set of flying leads operates forward and tail nav							FAA TSO-C30c Types I & III
9037703	01-0790377-03	Position Green, 28 VDC, set of flying leads operates forward and tail nav							FAA TSO-C30c Types II & III
9037704	01-0790377-04	Position Red, 28 VDC set of flying leads operates forward and tail nav							FAA TSO-C30c Types I & III

NOTE: All non-FAA approved parts in this catalog are signified by a (—) in the approval column. Parts without FAA approval may still be purchased, however, installation of these parts on U. S. Type Certificated products will require additional FAA approvals.

LED TAIL POSITION LIGHT ASSEMBLIES



71554 SERIES LED TAIL POSITION LIGHT

71554 Series in our newest LED tail position light. Exact Footprint for Whelen Models 71011 tail light. Available in horizontal or vertical mount.

Model	Part#	Description	Drawing#	Weight	Dimensions	Current Draw	LED Colors	Lens	Approvals
7155401	01-0771554-01	Horizontal mount, 28 VDC, comes with flying leads	71554	.14 lbs. (64gm)	Exposed height: 1.4" (35.56mm) x 1.71" (43mm) x 2.16" (55mm)	.13 amps @ 28 VDC .25 amps @ 14 VDC	Aviation White	Clear Hard- coated Polycar- bonate	FAA TSO-C30c Type III
7155402	01-0771554-02	Vertical mount, 28 VDC comes with flying leads							FAA TSO-C30c Type III
7155403	01-0771554-03	Vertical mount (Cessna), 28 VDC, has pin and ring terminal for connections							FAA TSO-C30c Type III
7155411	01-0771554-11	Horizontal mount, 14 VDC							FAA TSO-C30c Type III
7155412	01-0771554-12	Vertical mount (Cessna), 14 VDC							FAA TSO-C30c Type III



70966 SERIES LED TAIL POSITION LIGHT

70966 Series LED Tail Position light, is a high quality, long lasting, modern alternative to incandescent & halogen tail position lights. It offers significant technological upgrades over previous products. Utilizing LED technology, the following advantages are offered: Long Life (approx. 20,000 hours); reduced power consumption (compared to alternative light sources); shock & vibration resistant (no fragile filament to burn out); light (produces bright White light) and no EMI or RFI interference. 3 Year Warranty.

Model	Part#	Description	Drawing#	Weight	Dimensions	Current Draw	LED Colors	Lens	Approvals
7096600	01-0770966-00*	No connectors *Note Replaces 01-0770805-00	70966	0.3 lbs. (136gm)	Exposed Height: 1.74" (44mm) x 1.74" (44mm) x 2.60" (66mm)	0.3 amps @ 28 VDC	Aviation White	Clear Hard- coated Polycarbonate	FAA TSO-C30c Type III
7096601	01-0770966-01*	Connectors, case ground used on Beechjet *Note Replaces 01-0770805-01							FAA TSO-C30c Type III



LED INFRA-RED ANTI-COLLISION LIGHTS



71485 SERIES COVERT IR / RED LED COMBINATION BEACON

71485 Series is a combination Aviation Red visible and IR (Infra-Red) flashing beacon. Produced as a derivative of our Models 71080 & 90520, there is no TSO available for this product. 71485 can be surface mounted in an area as small as 2.6" or has an adapter to drop into a 3.75" recessed mount commonly found. Nominal IR LEDs at 875nm. Unit ships with 18" flying leads and independent control for Red and IR LED packages. Surface mount unit & additional models are not listed, contact factory. Complies with FAA TSO C96a Class III.



Model	Part#	Description	Drawing#	Weight	Dimensions	Current Draw	LED Colors	Lens	Approvals
7148500	01-0771485-00	LED Red	71485	0.76lbs (345gm) (w/3.75 Adapt)	3.92 (100mm) x Base Width: 3.66 (93mm)	0.3Amps Avg Red // 0.12Amps Avg IR @ 28 VDC	Aviation Red & IR	Clear Poly- carbonate	-
7148501	01-0771485-01	LED Red			3.74 (95mm) x Base Width: 2.6 (66mm)				-

70980 SERIES COVERT IR BEACON

70980 Series is a self-contained IR LED Anti-Collision light. This light is currently used on several military aircraft platforms as well as marine use, and can be easily adapted to suit a variety of applications for use in the NVG environment. Product has been tested to RTCA/DO-160 environmental standards. Shipped with flying leads. Lower mount has drain hole in lens.



Model	Part#	Description	Drawing#	Weight	Dimensions	Current Draw	LED Colors	Lens	Approvals
7098000	01-0770980-00	Upper mount, 28 VDC	70980	1.0 lbs. (454gm)	4.04" (103mm) x 3.66" (93mm)	0.1 amps @ 28 VDC LED: Infrared	Aviation Red & IR	Clear Hard Coated Polycarbonate	-
7098001	01-0770980-01	Lower mount, 28 VDC							-

NOTE: All non-FAA approved parts in this catalog are signified by a (—) in the approval column. Parts without FAA approval may still be purchased, however, installation of these parts on U. S. Type Certificated products will require additional FAA approvals.

INFRA-RED ILLUMINATION / IDENTIFICATION



90540 SERIES LED TAIL POSITION LIGHT

Model 90540 is an Infra-Red illumination product that produces a 24 degree beam. Model 90540 has demonstrated effectiveness for helicopters and reciprocating engine airplanes during takeoff, landing and off-airport locations. Enhances the effectiveness of NVG goggles by producing IR illumination at 875nm nominal. Specifications: On Request

Model	Part#	Description	Drawing#	Weight	Dimensions	Current Draw	LED Colors	Lens	Approvals
9054000	01-0790540-000	IR LED Flasher with 24 degree beam, 28 VDC	90540	1.5 lbs (680gm)	4.70" (119.38mm) x 2.87" (73mm)	0.2 amps @ 28 VDC	IR	Clear Polycarbonate	-



70513 SERIES INFRA-RED LED EMITTER

70513 Series is an IR Emitter used to identify aircraft or vehicles in the non visible light spectrum. A good choice when viewing objects with video or light amplification devices. Product produces good visibility through GEN III/GEN IV NVG from 800 - 1000 meters and marginal visibility out to 1500 meters. Models available in a choice of 30 or 2 hertz. Assembly ships with a set of 36" flying leads.

Model	Part#	Description	Drawing#	Weight	Dimensions	Current Draw	LED Colors	Lens	Approvals
7051300	01-0770513-00	IR LED emitter (30hz), 28 VDC	70513	0.2lbs (91gm)	1.4" (36mm) exp. H	19 milliamps @ 28 VDC	IR, 890nm Wavelength	Heat Resistant Glass (frosted)	-
7051301	01-0770513-01	IR LED emitter (30hz), 14 VDC							-
7051302	01-0770513-02	IR LED emitter (2hz), 28 VDC							-
7051303	01-0770513-03	IR LED emitter (2hz), 14 VDC							-
7051304	01-0770513-04	IR LED emitter (2hz), 28 VDC, Steady On							-



71499 LED INFRA-RED IDENTIFICATION LIGHT

Model 71499 is a surface mounted LED IR Flasher assembly nearly 30 times the intensity of our Model 70513. Product is designed to be easily identified at distances approaching 2km (depending on conditions and equipment). IR signature is optimized along the 'length' axis, LED output listed at 875nm. Product ships with 12" of teflon flying leads.

Model	Part#	Description	Drawing#	Weight	Dimensions	Current Draw	LED Colors	Lens	Approvals
7149900	01-0771499-00	IR LED Flasher, 28 VDC	71499	0.22 lbs (100gm)	1.41" (35.81mm) x 1.64" (41.65mm) x 4.61" (117.09mm)	50 milliamps @ 28 VDC	IR	Clear Polycarbonate	-



1062IR SERIES INFRA-RED STROBE LIGHT LENS

1062IR is an Infra-Red Strobe Light Lens only designed to replace multiple Whelen remote strobe and self-contained strobe products. 1062IR filters visible light from the conventional Xenon strobe making your ACL product covert for video or night vision viewing. Product applications include Whelen HRCFA, 70285 and A470(A). Contact factory to order.

NOTE: All non-FAA approved parts in this catalog are signified by a (—) in the approval column. Parts without FAA approval may still be purchased, however, installation of these parts on U. S. Type Certificated products will require additional FAA approvals.

A715-1 SERIES PAR-36 HOUSING AND LAMPS

A715-1 Series are fixtures that can accommodate a standard PAR-36 lamp assembly, available with or without a lamp. Used on Beechcraft a narrow base allowing replacement of A470(A) and similar remote strobes (contact factory). 71410 Ships with 12" long flying leads, available in 28V only (TSO-C96a, CLASS III).



Model	Part#	Description	Drawing#	Weight	Dimensions	Approvals
A7151	01-0770155-00	Housing only, less lamp	70155	1.5 lbs. (680gm) with lamp	3.25" (83mm) x 4.88" (124mm)	FAA/PMA
7015502	01-0770155-02	Housing with #Q5596 lamp		0.5 lbs. (227gm) less lamp		

PAR LAMP SERIES QUARTZ HALOGEN LAMP FIXTURE

Whelen's family of quartz halogen PAR lamps offer two distinct features over standard incandescent PAR lamps; sustained light intensity and 10 times the average life. Tests have shown 250 hours lab life versus 25 for standard off-the-shelf lamps. This dramatically reduces costs associated with replacement labor and parts. Where incandescent lamps decline in intensity (beam candlepower) over time due to filament deterioration, Whelen's family of lamps maintain their rated intensity throughout their life providing a constant level of visibility.



Model	Part#	Description	Drawing#	Voltage	Wattage	Candela	Approvals
Q5596	34-0750692-00	Par-36 Landing	50692	28 VDC	250	150,000	FAA/PMA
Q5587	34-0750707-00	Par-36 Taxi	50707	28 VDC	250	40,000	FAA/PMA
Q4509	34-0750748-00	Par-36 Landing	50748	14 VDC	100	140,000	FAA/PMA
Q4591	34-0750767-00	Par-36 Landing	50767	28 VDC	100	90,000	FAA/PMA
Q4566	34-0750810-00	Par-46 Landing	50810	28 VDC	450	150,000	FAA/PMA
Q4559X	34-0750820-00	Par-64 Landing	50820	28 VDC	600	765,000	FAA/PMA
Q4681	34-0850839-00	Par-46 Landing	50839	28 VDC	450	310,000	FAA/PMA

90095 SERIES PAR-46 LAMP FIXTURES

90095 Series are fixtures that can accept a standard PAR-46 lamp, sold with/without a lamp.



Model	Part#	Description	Drawing#	Weight	Dimensions	Current Draw	Approvals
9009504	01-0790095-04	Right Side mounting w/4580 lamp	90095	0.42 lbs. (191gm) Weight less lamp	2.9" (74mm) x 6.0" (152mm)	-	-
9009505	01-0790095-05	Left Side mounting w/4580 lamp					-
9009507	01-0790095-07	Housing only, less lamp					-

90195 SERIES PAR-36 LAMP FIXTURES

90195 Series are fixtures that can accommodate a standard PAR-36 lamp, available with or without a lamp.



Model	Part#	Description	Drawing#	Weight	Dimensions	Approvals
9019500	01-0790195-00	Housing only, less lamp	90195	0.5 lbs. (227gm) (less lamp) or 1.0 lbs. (454gm) (with lamp)	3.03" (77mm) x 4.88" (124mm)	-
9019501	01-0790195-01	With #4596 lamp				-
9019502	01-0790195-02	With #Q5596 lamp				-
9019503	01-0790195-03	With #4587 lamp				-
9019504	01-0790195-04	With #Q5587 lamp				-

NOTE: All non-FAA approved parts in this catalog are signified by a (—) in the approval column. Parts without FAA approval may still be purchased, however, installation of these parts on U. S. Type Certificated products will require additional FAA approvals.

PARMETHEUS PLUS SERIES



PARMETHEUS™ PLUS SERIES

Introducing Parmetheus Plus PAR-36 and 46 Series from Whelen Engineering. Performance you can trust... NOW 40% BRIGHTER!

LED lighting is the ideal technology for aviation applications. Whelen LED lights are time and field-tested for reliability and long-life performance under the tough conditions required by Fire, Emergency, DOT and Law Enforcement professionals around the world. Parmetheus Plus PAR-36 and 46 Super-LED® lights are a drop-in replacement for outdated Halogen or HID lamps. Lightweight, low-current and moisture resistant, they provide stable light output for thousands of operating hours.

- Retrofitting for PAR-36 & 46 Halogen and HID lamps
- “Drop-In” design offers easy installation and maintenance:
 - Power wiring attaches to brass screw terminals
 - Weight is virtually identical to previous lamps
 - Assembly design includes clocking notch
- First FAA Approved PAR-36 & 46 Super-LED for Aviation applications
- Optical spot and flood combinations via Whelen’s TIR™ (Total Internal Reflector) technology
- Replaceable, hard-coated, polycarbonate outer lens and metal, heat dissipating housing are moisture resistant
- PAR-36 available in Landing and Taxi versions
- Proudly designed and manufactured in the USA
- Five year warranty



Model	Part#	Description	Type	Candle Power	Amps & Volts	Size	Misc	Approvals
P36P1L	01-0771833-10	PAR-36 PLUS Super-LED Drop-In Replacement	Landing (Spot Light, 10°)	60,000	1.36 Amps @ 14 VDC	-	Replacement Outer Lens: 68-3971486A-30 Whelen Drawing Number: 71833	PMA
P36P1T	01-0771833-15		Taxi (Spreader Optic, 40°)	15,000		-		PMA
P36P2L	01-0771833-20		Landing (Spot Light, 10°)	60,000	0.68 Amps @ 28 VDC	-		PMA
P36P2T	01-0771833-25		Taxi (Spreader Optic, 40°)	15,000		-		PMA
P46P1L	01-0790750-10	PAR-46 PLUS Super-LED Drop-In Replacement	Landing (Spot Light, 10°)	105,000	2.6 Amps @ 14 VDC	-	Replacement Outer Lens: 68-3971577A30 Whelen Drawing Number: 90750	PMA
P46P2L	01-0790750-20		Landing (Spot Light, 10°)	105,000	1.3 Amps @ 28 VDC	-		PMA

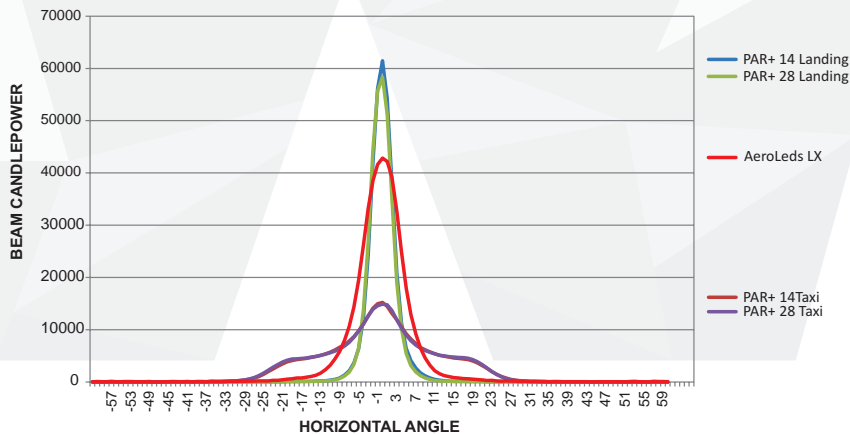
NOTE: All non-FAA approved parts in this catalog are signified by a (—) in the approval column. Parts without FAA approval may still be purchased, however, installation of these parts on U. S. Type Certificated products will require additional FAA approvals.

PARMETHEUS PLUS SERIES

LANDING

TAXI

TESTING RESULTS



BULB CHART

GE Bulb #	Parmetheus Original	Parmetheus Plus
4416	PLED1L	P36P1L
4505	PLED2L	P36P2L
4509	PLED1L	P36P1L
4587	PLED2T	P36P2T
4591	PLED2L	P36P2L
4593	PLED2T	P36P2T
4594	PLED2L	P36P2L
4595	PLED1L	P36P1L
4596	PLED2L	P36P2L
4623	PLED2T	P36P2T
4626	PLED2T	P36P2T
4627	PLED2T	P36P2T
Q4631	PLED1L	P36P1L
Q4632	PLED1L	P36P1L
4413	PLED461L	P46P1L
4421	PLED461L	P46P1L
4435	PLED461L	P46P1L
4522	PLED461L	P46P1L
4537	PLED461L	P46P1L
4551	PLED462L	P46P2L
4553	PLED462L	P46P2L
4554	PLED462L	P46P2L
Q4554	PLED462L	P46P2L
Q4566	PLED462L	P46P2L
4570	PLED462L	P46P2L
4571	PLED462L	P46P2L

Not Recommended

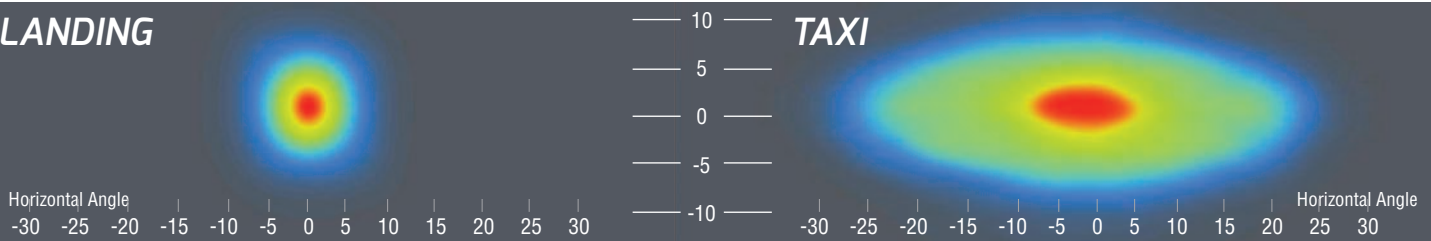
USABLE LIGHT INTENSITIES

Luminous Intensity in units of Candela is the energy emitted in one direction perceived by the human eye, & Luminous Flux in units of Lumens is the total energy emitted in all directions perceived by the human eye. These isocandela plots show usable light intensities at horizontal and vertical angles up and down. The colors indicate intensities of the light output. The warmer the colors, the more intense the light output. Parmetheus™ Plus color temperatures reach 6,000 degree Kelvin, which simulates mid-day light.



LANDING

TAXI



NOTE: All non-FAA approved parts in this catalog are signified by a (—) in the approval column. Parts without FAA approval may still be purchased, however, installation of these parts on U. S. Type Certificated products will require additional FAA approvals.

EXTERIOR LED LIGHTING



90361 SERIES

Model 90361 Series is a self-contained all LED Landing Light Assembly. The design is intended to provide a solution to the needs for a Taxi & Landing Light on a wide variety of aircraft. All current source and electronic circuitry is contained within the housing. Unit is available in several mounting configurations to retrofit existing typical PAR-36 lighting. Outer lens allows for mounting externally on aircraft, option of diffusion lens available upon request. Item ships with flying leads. Contact your OEM for installation eligibility on your aircraft.

Model	Part#	Description	Drawing#	Weight	Dimensions	Current Draw	LED Colors	Lens	Approvals
9036110	01-0790361-10	LED Landing, 14 VDC with "U" bracket	90361	1.5 lbs. (680gm)	Exposed Diameter: 4.70" (119mm) x Overall Depth: 2.87" (73mm)	3 amps @ 14 VDC 1.5 amps @ 28 VDC	Aviation White	Clear Polycarbonate	-
9036115	01-0790361-15	LED Taxi, Spreader optic, 14 VDC with "U" bracket							-
9036120	01-0790361-20	LED Landing, 28 VDC with "U" bracket							-
9036125	01-0790361-25	LED Taxi, Spreader optic, 28 VDC with "U" bracket							-



71141 SERIES LED LANDING LIGHT PAR-36 STYLE (INTERNAL MOUNT)

71141 Series is a self-contained all LED Landing light assembly. The design is intended to provide a solution to the needs for a taxi & landing light on a wide variety of aircraft. All current source and electronic circuitry is contained within the housing. Unit is available in several mounting configurations to retrofit existing typical PAR-36 lighting. Unit is designed to be mounted internally behind existing lens. Item ships with flying leads. Contact your OEM for installation eligibility on your aircraft.

Model	Part#	Description	Drawing#	Weight	Dimensions	Current Draw	LED Colors	Lens	Approvals
7114112	01-0771141-12	LED Landing/Taxing light internal mount, 14 VDC	71141	1.0 lbs. (454gm)	Exposed Diameter: 4.46" (113mm), x Overall Depth: 1.90" (48mm)	2.0 amps @ 14 VDC; 1.3 amps @ 28 VDC	Aviation White	Clear Polycarbonate	-
7114122	01-0771141-22	LED Landing/Taxing light internal mount, 28 VDC							-



90352 SERIES LED LANDING LIGHT PAR-46 STYLE (EXTERNAL MOUNT)

90352 Series is a self-contained all LED Landing light assembly. The design is intended to provide a solution to the needs for a taxi & landing light on a wide variety of aircraft. All current source and electronic circuitry is contained within the housing. Unit is available in several mounting configurations to retrofit existing typical PAR-46 lighting. Unit is designed to be mounted "externally (in the airstream)". Special models available with MS power input connector vs. flying leads as standard option. Contact your OEM for installation eligibility on your aircraft.

Model	Part#	Description	Drawing#	Weight	Dimensions	Current Draw	LED Colors	Lens	Approvals
9035200	01-0790352-00	LED Landing/Taxing light (natural finish)	90352	2.2 lbs. (998gm)	Exposed Diameter: 5.90" (150mm), x Overall Depth: 3.18" (81mm)	3 amps @ 28 VDC	Aviation White	Clear Polycarbonate	-
9035220	01-0790352-20	LED Landing/Taxing light (black finish)							-

NOTE: All non-FAA approved parts in this catalog are signified by a (—) in the approval column. Parts without FAA approval may still be purchased, however, installation of these parts on U. S. Type Certificated products will require additional FAA approvals.

90433 INTERIOR LED LANDING LIGHT

Model 90433 is a 6" round, internal (non-weatherized) LED illumination product. It is styled after a PAR-46 lamp & housing internal combination. 90433 cannot 'fit' in place of a 6" light bulb, technology considerations require a stand-alone approach requiring a degree of customization to the aircraft. Unit ships with 10" of 18ga. flying leads. 28 VDC Only. Contact your OEM for installation eligibility on your aircraft.



Model	Part#	Description	Drawing#	Weight	Dimensions	Approvals
9043300	01-0790433-00	6 Inch LED Landing light	90433	1.7 lbs. (771gm)	5.75" (146mm) Diameter x 1.11" (28mm) Outer Ring Depth, x 2.61" (66mm) Overall Depth	-

71259 INTERIOR LED ILLUMINATION LANDING / TAXI / RECOGNITION LIGHT

71259 Series is an interior LED illumination product. It is designed as a stand alone or it can be attached to other Whelen LED lighting, to provide landing/taxi/recognition lighting behind an aircraft outer lens. Assembly ships with two sets of 10", 18 ga. leads and terminates with A444 style connectors. There are choices of 10, 20 & 30 degree optic lighting spreads for these assemblies. 28 VDC Only. Contact your OEM for installation eligibility on your aircraft.



Model	Part#	Description	Drawing#	Weight	Dimensions	Approvals
7125900	01-0771259-00	Landing/taxi/recognition degree landing / 20 degree taxi	71259	0.65 lbs. (295gm)	3.25" (83mm) x 3.90" (99mm) x 2.05" (52mm)	-
7125901	01-0771259-01	Landing/taxi 10 degree landing 30 degree taxi				-

71246 INTERIOR LED ILLUMINATION LIGHT

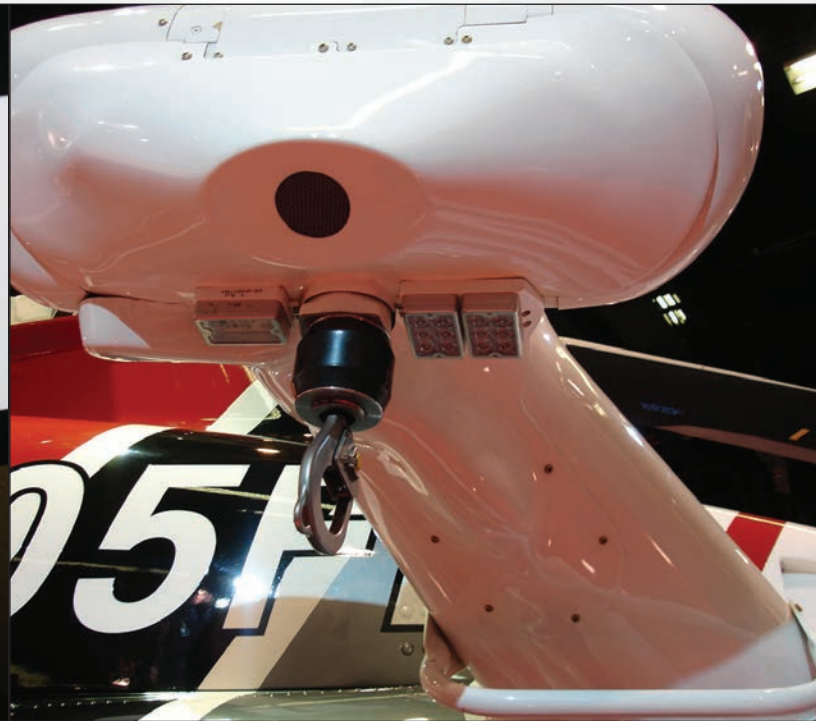
71246 Series is an interior LED illumination product. It is designed as a stand alone or it can be attached to other Whelen LED lighting, to provide landing/taxi/recognition lighting behind an aircraft outer lens. Assembly ships with 10", 18 ga. leads and terminates with an A444 style connector. There are choices of 10, & 30 degree optic lighting spreads for these assemblies. 28 VDC Only. Contact your OEM for installation eligibility on your aircraft.



Model	Part#	Description	Drawing#	Weight	Dimensions	Current Draw	LED Color	Lens	Approvals
7124611	01-0771246-11	LED T/R light, 10 degree	71246	0.3 lbs. (136gm)	3.25" (83mm) x 1.95 (50mm) x 2.05" (52mm)	0.5 amps	Aviation White	Clear Polycarbonate	-
7124633	01-0771246-33	LED T/R light, 30 degree							-

NOTE: All non-FAA approved parts in this catalog are signified by a (—) in the approval column. Parts without FAA approval may still be purchased, however, installation of these parts on U. S. Type Certificated products will require additional FAA approvals.

INTERNAL LED LIGHTING



71125 INTERIOR LED LANDING LIGHT

71125 Series LED Recognition light is designed to provide supplemental lighting for a wide variety of aircraft applications. Provides all of the advantages of LEDs as a light source, no EMI/RFI, low current draw, low heat, long life. Perfect for vibration prone areas. Item ships with flying leads. Several different beam spreads available. Designed to replace the Whelen A775 series. Version with an integrated MS connector also available. Can be used in conjunction with 71115 Flasher control assembly.

Model	Part#	Description	Drawing#	Weight	Dimensions	Current Draw	LED Colors	Lens	Approvals
7112510	01-0771125-10	10 degree beam pattern, 14 VDC	71125	0.3 lbs. (136gm)	1.95" (50mm) x 3.25" (83mm) x 1.25" (32mm)	0.9 amps @ 14 VDC 0.45 amps @ 28 VDC	Aviation White	Clear Polycarbonate Order RECLENS to obtain a kit of 20, 30 and 90 degree Lens Optic Inserts	-
7112511	01-0771125-11	20 degree beam pattern, 14 VDC							-
7112512	01-0771125-12	90 degree beam pattern, 14 VDC							-
7112520	01-0771125-20	10 degree beam pattern, 28 VDC							-
7112521	01-0771125-21	20 degree beam pattern, 28 VDC							-
7112522	01-0771125-22	90 degree beam pattern, 28 VDC							-



71245 INTERIOR LED ILLUMINATION LANDING / TAXI / RECOGNITION LIGHT

71245 is an interior LED illumination product that is designed to provide landing/taxi or recognition lighting behind an aircraft outer lens. Assembly ships with 10", 18 ga. leads and terminates with A444 style connector. There are choices of 10, 20 & 30 degree optic lighting spreads for these assemblies.

Model	Part#	Description	Drawing#	Weight	Dimensions	Current Draw	LED Colors	Lens	Approvals
7124511	01-0771245-11	LED landing/taxi light, 10 degree	71245	0.7 lbs (316gm)	3.25" (83mm) x 5.15" (130.81mm) x 2.05" (52mm)	1.5 amps	White	Clear Polycarbonate	-

NOTE: All non-FAA approved parts in this catalog are signified by a (—) in the approval column. Parts without FAA approval may still be purchased, however, installation of these parts on U. S. Type Certificated products will require additional FAA approvals.

90485 INTERIOR LED ILLUMINATION LANDING / TAXI / RECOGNITION LIGHT

90485 Series is a split segment, horizontally mounted, LED recognition or taxi light assembly to be mounted behind an aircraft outer lens. The two segments are independently controlled. LED Segments produce 10 and 30 degree optic spread. Assembly ships with 24", 20 gauge leads (with abrasion protection) and terminates with two A444 style connectors.



Model	Part#	Description	Drawing#	Weight	Dimensions	Current Draw	LED Color	Lens	Approvals
9048500	01-0790485-00A	LED Recognition/taxi light	90485	0.6 lbs (272gm)	1.95" (50mm) x 4.40 (112mm) x 1.26" (32mm)	0.45 amps @ 28 VDC	Aviation White	Clear Polycarbonate	-

71210 INTERIOR LED LANDING LIGHT

71210 is designed to replace Model 90131. It utilizes a state-of-the-art LED technology and Whelen's ultra efficient TIR optic design. Light output is 45% greater than the Quartz lights and draws a fraction of the current.



Model	Part#	Description	Drawing#	Weight	Dimensions	Current Draw	LED Color	Lens	Approvals
7121000	01-0771210-00	Landing/Taxi LED assembly	71210	1.25 lbs. (567gm)	3.25" (83mm) x 7.2" (183mm) x 2.1" (53mm, on the long side)	1.5 amps (Landing), .5A (Taxi), @ 28	Aviation White	Clear Polycarbonate	-

71265 INTERIOR LED ILLUMINATION LANDING / TAXI / RECOGNITION LIGHT

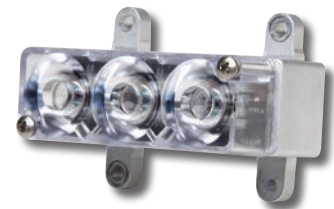
71265 Series is an LED illumination product designed to provide landing/taxi or recognition lighting behind an aircraft outer lens and with the attachment mounting points found in the A109 Sponson. Assembly is 20% brighter (effective Cd) and draws 60% less current than the system originally installed at the factory. Deck angle is not field adjustable. Assembly ships with two 10", 18 ga. leads and terminates with A441 style connectors for direct aircraft replacement. 28 VDC Only.



Model	Part#	Description	Drawing#	Weight	Dimensions	Current Draw	LED Color	Lens	Approvals
7126511	01-0771265-11	LED landing/taxi light, left	71265	1.43 lbs (649gm)	3.25" (83mm) x 7.10" (180mm) x 3.42" (87mm) Mounting Bracket is 3.87" (98mm)	1.5 amps	Aviation White	Clear Polycarbonate	-
7126521	01-0771265-21	LED landing/taxi light, right							-

71325 LED RECOGNITION LIGHT

Model 71325 is an LED Recognition/Exterior illumination product. It is an updated version of Model 71092 recognition light (2008 Catalog). Model 71325 exceeds light output of 71092 three fold. Unit ships with 7 inch wires into A447 style pin connector. Will operate from 14-28VDC.



Model	Part#	Description	Drawing#	Weight	Dimensions	Current Draw	LED Color	Lens	Approvals
7132500	01-0271325-00	LED Recognition light	71325	0.17 lbs. (77gm)	1.45" (37mm) x 2.56" (65mm) x 1.38" (35mm)	0.25 amps	Aviation White	Clear Polycarbonate	-

NOTE: All non-FAA approved parts in this catalog are signified by a (—) in the approval column. Parts without FAA approval may still be purchased, however, installation of these parts on U. S. Type Certificated products will require additional FAA approvals.

INTERNAL LED LIGHTING



90406 INTERIOR LED ILLUMINATION LANDING / TAXI / RECOGNITION LIGHT

90406 is an LED illumination product designed to provide landing/taxi or recognition lighting behind an aircraft outer lens. Assembly ships with 24 inch, 20 gauge (with abrasion protection) flying leads. There are choices of 10 and 30 degree optic lighting spreads for this assembly (S76, Contact Sikorsky). 28 VDC Only. Contact your OEM for installation eligibility on your aircraft.

Model	Part#	Description	Drawing#	Weight	Dimensions	Current Draw	LED Colors	Lens	Approvals
9040600	01-0290406-00	LED landing/recognition light	90406	1.11 lbs (503gm)	8.20" (208mm) x 3.15" (80mm) x 1.35" (34mm)	1.9 amps	Aviation White	Clear Polycarbonate	-



71186 LED ILLUMINATION / DOWNWASH / RECOGNITION LIGHT

Model 71186 is a compact illumination solution that can be utilized in many lighting upgrade situations (see also 71325). 71186 ships with 6" flying leads.

Model	Part#	Description	Drawing#	Weight	Dimensions	Current Draw	LED Colors	Lens	Approvals
711860101	01-0771186-01	LED downwash light	71186	0.2 lbs. (91gm)	1.95" (50mm) Inner Diameter, 2.15" (55mm) Outside Face, 1.0" (25mm) Overall Depth	0.25 amps @ 28 VDC nominal	Aviation White	Clear Polycarbonate	-



295SLSA1 PUBLIC ADDRESS WITH SIREN TONES

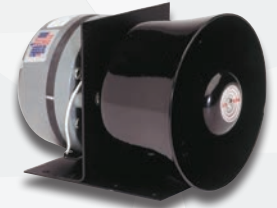
295SLSA1 and 295SLSE1 are an 8 function 100/200 watt siren amplifier featuring public address, Hi/Low, yelp and wail siren tones with manual override. Input, output and over-voltage protection. Complete with wired-in noise cancelling microphone, mic clips, and cables. Please specify 14 VDC or 28 VDC when ordering.



Model	Part#	Description	Drawing#	Weight	Dimensions	Current Draw	Approvals
295SLSA1	01-0770879-00	100/200 watt siren amplifier	82235	3.0 lbs. (1361gm)	7.0" (179mm) x 6.0" (152mm) x 2.50" (64mm)	14 VDC	-
295SLSE1	01-0884745-01A					28 VDC	

SA-340-STS SIREN AMPLIFIER

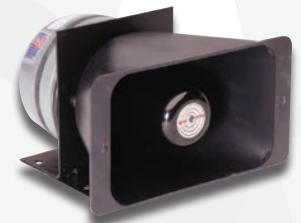
SA-340-STS is a 100 watt RMS siren amplifier.



Model	Part#	Description	Drawing#	Weight	Dimensions	Approvals
SA340STS	01-0861413-00F	100 watt RMS siren amplifier	61413	8 lbs. (3629gm)	6.8" (173mm) x 5.62" (143mm) x 5.62" (143mm)	-

SA-340-TS SIREN AMPLIFIER

SA-340-TS is a 100 watt RMS siren amplifier.



Model	Part#	Description	Drawing#	Weight	Dimensions	Approvals
SA340TS	01-0881013-00G	100 watt RMS siren amplifier	81013	9 lbs. 3 oz. (4218gm)	8" (203mm) x 7" (179mm) x 5.25" (133mm)	-



COCKPIT LIGHTING



A315-HI SERIES COCKPIT UTILITY LIGHT ASSEMBLY

A315-HI Series Cockpit Utility light assembly which rotates for convenience in reading maps and illuminating instrument panels. Furnished with a right angle bracket for ease of mounting. Available with Instrument White (Blue) lens, Red or Clear. Uses a 14 VDC #1414 or a 28 VDC #1495 lamp.

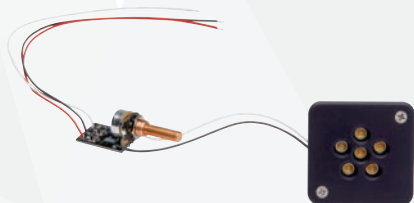
Model	Part#	Description	Drawing#	Weight	Dimensions	Current Draw	LED Colors	Lens	Approvals
A315HIR1	01-0770113-00	Red lens, 14 VDC	70113	0.07 lbs. (32gm)	2.2" (56mm) x 0.87" (22mm) x 0.93" (24mm)	0.46 amps @ 14 VDC 0.3 amps @ 28 VDC	Aviation Red, Aviation Blue Aviation White	Polycarbonate	-
A315HIR2	01-0770113-01	Red lens, 28 VDC							-
A315HIW1	01-0770113-02	White lens, 14 VDC							-
A315HIW2	01-0770113-03	White lens, 28 VDC							-
A315HIB1	01-0770113-04	Instrument White lens, 14 VDC							-
A315HIB2	01-0770113-05	Instrument White lens, 28 VDC NSN							-



A315-LO SERIES COCKPIT UTILITY LIGHT ASSEMBLY

A315-LO Series Cockpit Utility light assembly which rotates for convenience in reading maps and illuminating instrument panels. Optional right angle bracket available for ease of mounting. Uses a 14 VDC #1893 or a 28 VDC #1864 lamp.

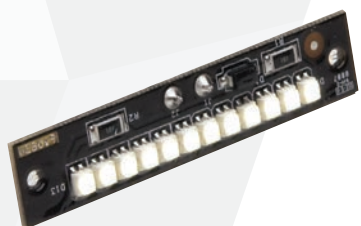
Model	Part#	Description	Drawing#	Weight	Dimensions	Current Draw	LED Colors	Lens	Approvals
A315LO14	01-0770106-00	14 VDC	70106	0.06 lbs. (27gm)	2.18" (55mm) x 0.81" (21mm) x 0.81" (21mm)	0.33 amps @ 14 VDC 0.17 amps @ 28 VDC	Aviation White	-	-
A315LO28	01-0770106-01	28 VDC							-



71154 LED READING / COCKPIT LIGHT

Model 71154 is an LED Reading/Cockpit light replacement for Grimes Model 22020 (typically found on S76 and GIV aircraft and others). Item ships as pictured with LED specific rheostat located ten inches from the lighthouse. Rheostat shaft is 0.25" in diameter. Steady On/ Dimmable.

Model	Part#	Description	Drawing#	Weight	Dimensions	Current Draw	LED Colors	Housing	Lens	Approvals
7115400	01-0771154-00	LED series flood light	71154	0.16 lbs (73gm)	Exposed Height, 0.76" (19mm) x 2.18 (55mm) x 2.18" (55mm)	0.125 amps	Aviation White	Black Anodize Aluminum	-	-



70985 LED INTERIOR ILLUMINATION ASSEMBLY

Model 70985 is an LED interior illumination assembly. It's .5 inches wide and is available with a 2.45" or a 1.95" length. Designed to be used in conjunction with customer designed interior aircraft parts. Item ships with 7 inch flying leads. Will function normally from 24-30 Volts.

Model	Part#	Description	Drawing#	Weight	Dimensions	Current Draw	LED Colors	Lens	Approvals
7098501	01-0770985-01	Interior 12 LED light strip	70985	0.018	(-01 Version) 2.45" (62mm) x 0.5 (13mm) (-00 Version) 1.95" (50mm) x 0.5 (13mm)	0.06 amps average Typ.	Aviation White	-	-

NOTE: All non-FAA approved parts in this catalog are signified by a (—) in the approval column. Parts without FAA approval may still be purchased, however, installation of these parts on U. S. Type Certificated products will require additional FAA approvals.

LED POST LIGHTS 71434, 71440 & 71450 SERIES

The 71434, 71440, & 71450 Series LED Instrument Post light assemblies are designed to illuminate the instrument panel and function as instrument mounting bolts. They are high quality, long lasting modern alternatives to standard incandescent post lights. Benefits of upgrading to LED technology include: long life (approx. 20,000 hours), reduced power consumption, shock & vibration resistance, light color & temperature, and no EMI or RFI Interference



Model	Part#	Description	Drawing#	Weight	Dimensions	Current Draw	LED Colors	Lens	Approvals
71434B11	01-0771434B11	LED post light, 14 VDC, White long Black	71434, 71440 & 71450	0.037lbs (17gm)	1"(25mm) w/ spacer, 0.88" (22mm) w/o spacer	.10 mA @ 14 & 28 VDC	Aviation White Aviation Red	-	-
71434B13	01-0771434B13	LED post light, 14 VDC, White short Black							
71434B20	01-0771434B20	LED post light, 28 VDC, Red long Black							
71434B21	01-0771434B21	LED post light, 28 VDC, White long Black							
71434B22	01-0771434B22	LED post light, 28 VDC, Red short Black							
71434B23	01-0771434B23	LED post light, 28 VDC, White short Black							
71434G11	01-0771434G11	LED post light, 14 VDC, White long Grey							
71434G13	01-0771434G13	LED post light, 14 VDC, White short Grey							
71434G20	01-0771434G20	LED post light, 28 VDC, Red long Grey							
71434G21	01-0771434G21	LED post light, 28 VDC, White long Grey							
71434G22	01-0771434G22	LED post light, 28 VDC, Red short Grey							
71434G23	01-0771434G23	LED post light, 28 VDC, White short Grey							
7144000	01-0771440-00	LED post light, 28 VDC, Red with spacer							
7144001	01-0771440-01	LED post light, 28 VDC, White							
7144002	01-0771440-02	LED post light, 28 VDC, Red							
71450B11	01-0771450B11	LED post with nut, 14 VDC, White long Black							
71450B13	01-0771450B13	LED post with nut, 14 VDC, White short Black							
71450B20	01-0771450B20	LED post with nut, 28 VDC, Red long Black							
71450B21	01-0771450B21	LED post with nut, 28 VDC, White long Black							
71450B22	01-0771450B22	LED post with nut, 28 VDC, Red short Black							
71450B23	01-0771450B23	LED post with nut, 28 VDC, White short Black							
71450G11	01-0771450G11	LED post with nut, 14 VDC, White long Grey							
71450G13	01-0771450G13	LED post with nut, 14 VDC, White short Grey							
71450G20	01-0771450G20	LED post with nut, 28 VDC, Red long Grey							
71450G21	01-0771450G21	LED post with nut, 28 VDC, White long Grey							

White 34-0618060- WO
 Red 34-0618060 - R0
 Blue 34-0618060 - B0

Note: Model 71434 is identical to the 71450 without the connector nut. Both are available in Black and Grey. 14V version available with White LED, 28V version with White or Red. Made to replace existing A350 and A350CN assemblies.

Model 71440 has a #10-32 mounting thread. 28V version available with White or Red LED. Available in Black. Made to replace Model 70348.

A350 & A350CN SERIES POST-LIGHTS

A350 and A350CN Series Post light assemblies are designed to illuminate the instrument panel and function as instrument mounting bolts.

Model	Part#	Description	Drawing#	Weight	Dimensions	Current Draw	LED Colors	Lens Color	Post Color	Approvals
A350	01-0770116-()	Instrument post light assemblies	70116	0.037 lbs (17gm)	.875" (22mm) without spacer, 1" (25mm) with spacer Post Height: SH = Short (1.875") LG = Long (2.375")	0.2 amps @ 6 VDC, 0.08 amps @ 14 VDC, & 0.04 amps @ 28 VDC 6 = (328 lamp), 14 = (330 lamp), 28 = (327 lamp)	Aviation White Aviation Red	IW = Instrument White CL = Clear, RD = Red	BK = Black GR = Grey	-
A350CN	01-0770119-()	Instrument post light assemblies	70119							FAA/PMA

Ordering Code Example:

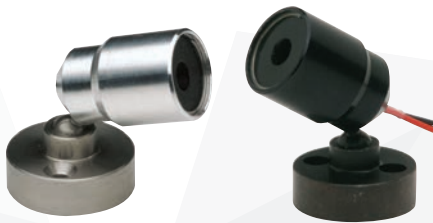
A350CN - BK - CL - SH - 14

Assy P/N - Post Color - Lens Color - Post Height - Voltage

Model A350 is identical to the A350CN, but without the connector nut.

NOTE: All non-FAA approved parts in this catalog are signified by a (—) in the approval column. Parts without FAA approval may still be purchased, however, installation of these parts on U. S. Type Certificated products will require additional FAA approvals.

INTERIOR LIGHTING



70820 SERIES LED MAP / READING LIGHT

70820 series are LED (Light Emitting Diode) Interior Map/Reading light assemblies. They are designed for cabin, or cockpit illumination. It has a 360° swivel base, allowing for infinite light angle adjustment. Utilizing LED technology, the following advantages are offered: long life (approx. 20,000 hours), reduced power consumption (compared to alternative light sources) and shock & vibration resistant.

Model	Part#	Description	Drawing#	Weight	Dimensions	Current Draw	LED Colors	Lens	Approvals
7082000	01-0770820-00	White LED, natural aluminum finish, 14 VDC	70820	0.19 lbs. (86gm)	1.13" (28.7mm, base) x 1.34" (34mm) x 2.66" (67.56mm, swivel dia.)	0.02 amps @ 14 VDC 0.02 amps @ 28 VDC	Aviation Red, Aviation Blue, Aviation White	-	-
7082001	01-0770820-01	White LED, natural aluminum finish, 28 VDC							-
7082002	01-0770820-02	White LED, Black anodized finish, 14 VDC							-
7082003	01-0770820-03	White LED, Black anodized finish, 28 VDC							-
7082004	01-0770820-04	Red LED, Black anodized finish, 14 VDC							-
7082005	01-0770820-05	Red LED, Black anodized finish, 28 VDC							-
7082006	01-0770820-06	Blue LED, Black anodized finish, 14 VDC							-
7082007	01-0770820-07	Blue LED, Black anodized finish, 28 VDC	-						



70813 SERIES LED CABIN LIGHT

70813 series LED Interior Cabin light is a high quality, long lasting, dimmer controllable, modern alternative to the A360 series incandescent interior cabin lights. It offers significant technological upgrades over previous products. Utilizing LED (Light Emitting Diode) technology, the following advantages are offered: long life (approx. 100,000 hours), reduced power consumption (compared to alternative light sources), shock & vibration resistant (no fragile filament to burn out), light (produces bright White light), small profile (allows for shallow mounting depth) and no EMI or RFI interference.

Model	Part#	Description	Drawing#	Weight	Dimensions	Current Draw	Candela	LED Colors	Lens	Approvals
7081300	01-0770813-00	28 VDC	70813	0.1 lbs (45gm)	4.0" (101mm) x 2.75" (70mm) x 0.187" (4.75mm)	.04 amps	7 CD	Aviation White	Polycar- bonate	-
7081303	01-0770813-03	14 VDC				.08 amps	14 CD			-
7081304	01-0770813-04	28 VDC				.08 amps	14 CD			-
7081307	01-0770813-07	14 VDC				0.16 amps	28 CD			-
7081308	01-0770813-08	28 VDC				0.16 amps	28 CD			-
7081311	01-0770813-11	14 VDC				0.24 amps	42 CD			-
7081312	01-0770813-12	28 VDC				0.24 amps	42 CD			-

NOTE: All non-FAA approved parts in this catalog are signified by a (—) in the approval column. Parts without FAA approval may still be purchased, however, installation of these parts on U. S. Type Certificated products will require additional FAA approvals.

71414 LED INSPECTION LIGHT

Model 71414 is an LED Inspection light designed to replace GRIMES A5395-23 on the S76 Helicopter. The product comes standard with a Black anodize finish and a Clear polycarbonate lens. 71414 also comes with an 'L' bracket and has a hex head locking assembly to hold the light at the desired angle. 71414 produces more (>13) candela than the GRIMES light it replaces, unit comes with 12" flying leads.



Model	Part#	Description	Drawing#	Weight	Dimensions	Current Draw	LED Color	Lens	Approvals
7141400	01-0771414-00	LED Inspection Light	71414	0.08lbs (36.29gm)	2.17(55mm) x 1.19" (30.23mm) x 0.80" (20.32mm)	60 mA @ 24 VDC	Aviation White	Clear Polycarbonate	-

A360 SERIES INTERIOR LIGHT

A360 Series Interior light assemblies designed for compartment flooding and general lighting. The A360SW is identical to the A360 but includes an On/Off slide switch. Suffix in model number indicates lamp required. Lamp desired determines the voltage.



Model	Part#	Description	Drawing#	Weight	Dimensions	Current Draw	Color	Lens	Approvals
A360631	01-0770142-00	#631 lamp, 9 watt, 14 VDC	A360SW: 70143	0.2 lbs. (91gm)	2.75" (70mm) x 4.0" (101mm) x Depth Behind Mounting Flange: 1.40" (36mm)	0.67 amps	Aviation White	Glass	-
A360303	01-0770142-01	#303 lamp, 9 watt, 28 VDC							-
A3601141	01-0770142-02	#1141 lamp, 18 watt, 14 VDC							-
A360307	01-0770142-03	#307 lamp, 18 watt, 28 VDC							-
A360S	01-0770143-00	#631 lamp, 9 watt, 14 VDC with switch	A360: 70142	0.2 lbs. (91gm)	2.75" (70mm) x 4.0" (101mm) x Depth Behind Mounting Flange: 1.40" (36mm)	0.67 amps	Aviation White	Glass	-
A360S303	01-0770143-01	#303 lamp, 9 watt, 28 VDC with switch							-
A360SW1	01-0770143-02	#1141 lamp, 18 watt, 14 VDC with switch							-
A360S307	01-0770143-03	#307 lamp, 18 watt, 28 VDC with switch							-

71144 "GOOSENECK" LED LIGHT ASSEMBLY

71144 assembly features a positive off position and rheostat controlled light intensity. Models including 'side' mounted intensity control are designed for the S76D. 28 VDC Only.



Model	Part#	Description	Drawing#	Weight	Dimensions	Current Draw	LED Color	Hood	Approvals
7114416	01-0771144-16	16 inch adjustable map light, 28 VDC	71144	0.46 lbs. (209gm)	16" (406.4mm)	0.06 amps @ 28 VDC	Aviation White	Black Nylon Hood: fixed in Position	-



INTERIOR LIGHTING



71724 SERIES LED CABIN LIGHT

Spun aluminum assembly 5.5 inches outer diameter, 3.83 inch recessed inner diameter with a 1 inch recessed depth.

Model	Part#	Description	Drawing#	Weight	Dimensions	Current Draw	LED Colors	Lens	Approvals
7172402	01-0771724-02	LED interior dome light	71724	0.19 lbs. (86mm)	4.125" (105mm) dia x .35" (9mm) depth	100 mA @ 28 VDC	Aviation White	Polycarbonate	-
7172400	01-0771724-00								-



70339 SERIES INTERIOR DOME COMPARTMENT LIGHT

70339 Series Interior Dome/Compartment light assemblies designed for recessed overhead or wall mounting with minimal depth. An On/Off switch is optional. Uses a 14 VDC #1414 lamp or a 28 VDC #1495 lamp.

Model	Part#	Description	Drawing#	Weight	Dimensions	Current Draw	Wattage	Lens	Approvals
7033901	01-0770339-01	14 VDC	70339	0.16 lbs. (73gm)	Depth Behind Mounting Flange: 1.06" (27mm)	0.46 amps @ 14VDC, 0.3 amps @ 28 VDC	6 watts	Polycarbonate	-
7033902	01-0770339-02	28 VDC							-
7033903	01-0770339-03	14 VDC with switch							-
7033904	01-0770339-04	28 VDC with switch							-



STROBE TO LED REPLACEMENT

**Model A470AS
Strobe**



LEDs
LEDs have direct DC voltage hook-up, without any need for a power supply!

mounting position fits

**Model A470AR
Strobe**



**Model 90520
LED**
01-0790520-01 (28 VDC)
01-0790520-51 (14 VDC)
Fixed wing
Class III

or

**Model 71080
LED**
01-0771080-01 (28 VDC)
01-0771080-51 (14 VDC)
All Red Helicopter
Class I
and
Fixed Wing Aircraft
Class III

**Model HR,CFA
Strobe**
(with integrated "self-contained" strobe power supply)



mounting position fits



**Model 90520
LED**
01-0790520-05 (28 VDC)
01-0790520-55 (14 VDC)

**Model A440
19-130074-009**
Ring usually installed inward

or

**Model 71080
LED**
01-0771080-05 (28 VDC)
01-0771080-55 (14 VDC)
All Red Helicopter
and others

NOTE: All non-FAA approved parts in this catalog are signified by a (—) in the approval column. Parts without FAA approval may still be purchased, however, installation of these parts on U. S. Type Certificated products will require additional FAA approvals.

LED FLASHER ASSEMBLIES



71156 FLASHER ASSEMBLY

71156 series is an electronic 'Pulse' light Flasher for use with Whelen taxi & landing LED lighthead (catalog and custom versions). 71156 is being integrated into aircraft model upgrades and new type certified aircraft. Flasher operates four outputs steady-burn or will allow two outputs to be flashed or steady independent of the other. MS Connectors with aluminum housing. Tested in accordance with RTCA/DO-160 Environmental Tests.

Model	Part#	Description	Drawing#	Weight	Dimensions	Current Draw	Flash Rate	Approvals
7115604	01-0771156-04	Flasher assembly	71156	.82lbs. (372gm)	1.56" (40mm) x 4.5" (114mm) x 5" (127mm)	20 amps max (all outputs) @ 28 VDC	90 fpm (combined)	-



SAFETY SITE™ SUPER-LED® LANDING ZONE SYSTEM

The safe, environmentally friendly alternative to flares. Highly effective LED light modules can be used in the horizontal position for emergency aircraft landing zone identification. Compact Cordura® duffel bag stores five light modules for ready access.



Model	Part#	Description	Drawing#	Weight	Dimensions	Current Draw	LED Color	Lens	Approvals
W2OSS	01-0663976-R0	Single Red module	63976	-	4-7/8" (124mm) x 4-3/4" (121mm) x 2-7/8 (73mm)	Three alkaline size C batteries, not included	Red Amber	Red Amber	-
W2OSSA	01-0663976-A0	Single Amber module							-
W2OSSAK	01-0463976-A0	5 Amber module kit, includes carrying bag							-
W2OSSRK	01-0463976-R0	5 Red module kit, includes carrying bag							-

71100 LED COLORED IDENTIFICATION LIGHT

71100 series are versions of our 71011 LED Taillight. Developed for applications requiring aircraft ground visibility, low light, at oblique angles for ground personnel. Item utilized White LEDs filtered with Blue, Green, Red or Amber colored outer lens.



Model	Part#	Description	Drawing#	Weight	Dimensions	Current Draw	LED Colors	Lens	Approvals
7110001	01-0771100-01	Vertical mount Amber	71100	0.2lbs (91gm)	Exposed Height: 1.36" (35mm) x Mounting Hole Pattern: 1.75" (44mm)	0.3 amps @ 28 VDC	Aviation White	Blue, Red, Green or Amber Polycarbonate	-
7110002	01-0771100-02	Vertical mount Blue							-
7110004	01-0771100-04	Vertical mount Green							-
7110005	01-0771100-05	Vertical mount Red							-
7110011	01-0771100-11	Horizontal mount Amber							-
7110012	01-0771100-12	Horizontal mount Blue							-
7110014	01-0771100-14	Horizontal mount Green							-
7110015	01-0771100-15	Horizontal mount Red							-

REPLACEMENT CONNECTORS

Replacement connector kits and assemblies for cables.

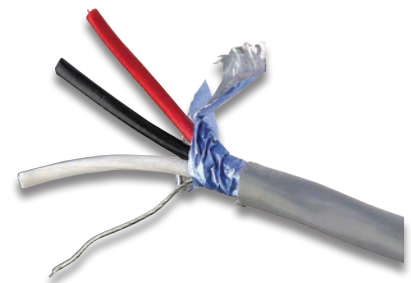
Model	Part#	Description	Approvals
A441	01-0430011-00	3 Position male connector with pins kit	-
A442	01-0410823-00	3 Position female connector with sockets kit	-
A444	02-0230007-00	2 Position male connector with pins ass'y	-
A446	02-0230085-00	2 Position female connector with sockets ass'y	-
A447	01-0417808-00	4 Position male connector with pins	-
A448	01-0417808-01	4 Position female connector with sockets	-



INSTALLATION CABLE KITS

Cable kits include all required connectors for hooking up the strobe light to the power supply only. Warning placards and the Installation Service Manual are included also. All cable is 16 gauge 3/C shielded. The cable diameter is .275" (7mm). Weight is .050 lbs. per linear foot. Kits do not include switches or breakers.

Model	Part#	Description	Approvals
HS5	01-0750215-00	5' Cable kit	-
HT10	01-0750218-00	10' Cable kit	-
HS30	01-0750214-00	30' Cable kit	-
HD60	01-0750206-00	60' Cable kit NSN	-
HDT390	01-0750205-00	90' Cable kit	-
HT	01-0750216-00	Install kit only, no cable or connectors	-



CRIMP TOOL

Pin and socket crimping tool.

Model	Part#	Description	Approvals
CRIMPAV	01-0515361-00	Pin/socket crimping tool, MILBAR #25E	-



NOTE: All non-FAA approved parts in this catalog are signified by a (—) in the approval column. Parts without FAA approval may still be purchased, however, installation of these parts on U. S. Type Certificated products will require additional FAA approvals.

LIGHTING APPLICATIONS



71080 SERIES



90406 - SIKORSKY



90406, 71125, B429 - LED LANDING SYSTEM



71080, A109



71265, 71080, 71110, A109



71110, S76C++



71125, GOODRICH HOIST



7090502 - S76C++



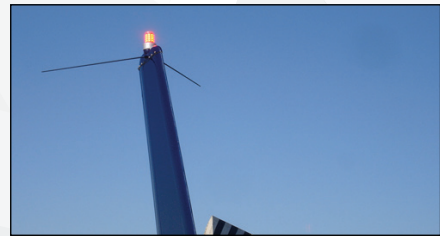
71011, B206



90352 - S76D



70875, EC145



71110, 71080, B206



90352, USAF



71125, B429



90361 TAXI, AS350



71055, AS350



7090502, 7101102, EC145



70513, 70875, FIRESOUT

NOTE: All non-FAA approved parts in this catalog are signified by a (—) in the approval column. Parts without FAA approval may still be purchased, however, installation of these parts on U. S. Type Certificated products will require additional FAA approvals.

FSC & NIIN REFERENCE LIST

FSC	NIIN	APPROVED ITEM NAME	COMPANY NAME	PART NUMBER
W	14456688	CONTROL, NAVIGATION, A	WHELEN ENGINEERING COMPANY INC.	01-0770028-03
6210	14456688	CONTROL, NAVIGATION, A	WHELEN ENGINEERING COMPANY INC.	01-0770028-05
6220	13639713	LIGHT, RECOGNITION, A	WHELEN ENGINEERING COMPANY INC.	01-0770029-29
5850	14072136	BEACON SET, INFRARED	WHELEN ENGINEERING COMPANY INC.	01-0770029-32
6220	14639826	LIGHT, RECOGNITION, A	WHELEN ENGINEERING COMPANY INC.	01-0770034-01
6080	14330778	INSTALLATION KIT, FI	WHELEN ENGINEERING COMPANY INC.	1HD60
6220	12539658	LIGHT, LOWER ANTI-COLLISION	WHELEN ENGINEERING COMPANY INC.	70285-01
6220	12539658	LIGHT, LOWER ANTI-COLLISION	WHELEN ENGINEERING COMPANY INC.	70285-21
6220	13367051	LIGHT, COCKPIT, AIRCR	WHELEN ENGINEERING COMPANY INC.	A315-H1
6220	13417718	LIGHT, COCKPIT, AIRCR	WHELEN ENGINEERING COMPANY INC.	A315-HI-B-28-CLEAR
6220	13417718	LIGHT, COCKPIT, AIRCR	WHELEN ENGINEERING COMPANY INC.	A315-HI-C-28
6210	13362686	LIGHT, PANEL	WHELEN ENGINEERING COMPANY INC.	A350-CN-CL-BK-SH-28
6210	14755079	LIGHT, PANEL	WHELEN ENGINEERING COMPANY INC.	A350CNIWBKLG28
6240	13918743	LAMP, METAL HALIDE	WHELEN ENGINEERING COMPANY INC.	A350CNIWBKSH28
6210	15463509	LIGHT, PANEL	WHELEN ENGINEERING COMPANY INC.	A350-CN-RD-BK-SH-28
6210	15366726	GUARD, LAMP	WHELEN ENGINEERING COMPANY INC.	A354RD-BK
6220	13940936	LENS, LIGHT	WHELEN ENGINEERING COMPANY INC.	A402AD
6220	13940936	LENS, LIGHT	WHELEN ENGINEERING COMPANY INC.	A402ADR
6210	14497237	LENS, LIGHT	WHELEN ENGINEERING COMPANY INC.	A402A-D-W
6210	14116658	LENS, LIGHT	WHELEN ENGINEERING COMPANY INC.	A402A-W
6210	11012325	LENS, LIGHT	WHELEN ENGINEERING COMPANY INC.	A402R
6210	12852842	LENS, LIGHT	WHELEN ENGINEERING COMPANY INC.	A402R/W
6210	12905159	LENS, LIGHT	WHELEN ENGINEERING COMPANY INC.	A402W
6220	10271294	FLASH TUBE ASSEMBLY	WHELEN ENGINEERING COMPANY INC.	A469
6220	10271294	FLASH TUBE ASSEMBLY	WHELEN ENGINEERING COMPANY INC.	A469A
6240	13941811	LAMP, FLASHTUBE	WHELEN ENGINEERING COMPANY INC.	A469B
6220	14807344	LIGHT, NAVIGATIONAL	WHELEN ENGINEERING COMPANY INC.	A470A-D-R
6220	13844609	LIGHT, NAVIGATIONAL	WHELEN ENGINEERING COMPANY INC.	A470ADS
6220	14851001	LIGHT, NAVIGATIONAL	WHELEN ENGINEERING COMPANY INC.	A470AR
6340	14331362	REMOTE, STROBE HEAD	WHELEN ENGINEERING COMPANY INC.	A470AW
6220	11012324	LIGHT, NAVIGATIONAL	WHELEN ENGINEERING COMPANY INC.	A470DR
6220	13823760	LIGHT, RECOGNITION, A	WHELEN ENGINEERING COMPANY INC.	A470R
6220	14851001	LIGHT, NAVIGATIONAL	WHELEN ENGINEERING COMPANY INC.	A470R
6340	14331362	REMOTE, STROBE HEAD	WHELEN ENGINEERING COMPANY INC.	A470W
6130	14151161	POWER SUPPLY	WHELEN ENGINEERING COMPANY INC.	A490A-TS-CF-14/28
6130	10071195	POWER SUPPLY STROBE	WHELEN ENGINEERING COMPANY INC.	A490TCF-14/28
6220	10207591	LIGHT, NAVIGATIONAL	WHELEN ENGINEERING COMPANY INC.	A500A-HD-M-28
6220	14130725	LIGHT, NAVIGATIONAL	WHELEN ENGINEERING COMPANY INC.	A555A-V-(VOLTAGE)
6220	14130722	LIGHT, NAVIGATIONAL	WHELEN ENGINEERING COMPANY INC.	A555A-V-R-(VOLTAGE)
6220	14130722	LIGHT, NAVIGATIONAL	WHELEN ENGINEERING COMPANY INC.	A555-V RED
6220	14130725	LIGHT, NAVIGATIONAL	WHELEN ENGINEERING COMPANY INC.	A555-V WHITE
6220	15638384	LIGHT, NAVIGATIONAL	WHELEN ENGINEERING COMPANY INC.	A600PG28
6220	15638385	LIGHT, NAVIGATIONAL	WHELEN ENGINEERING COMPANY INC.	A600PR28
6210	13555564	LIGHT, BEACON	WHELEN ENGINEERING COMPANY INC.	A610
6220	14835571	LIGHT, NAVIGATIONAL	WHELEN ENGINEERING COMPANY INC.	A625-D
6210	12908385	LIGHT, WARNING	WHELEN ENGINEERING COMPANY INC.	A650PG
6210	14330776	LIGHT, WARNING	WHELEN ENGINEERING COMPANY INC.	A650PG-D
6210	12908386	LIGHT, WARNING	WHELEN ENGINEERING COMPANY INC.	A650PR
6210	14330777	LIGHT, WARNING	WHELEN ENGINEERING COMPANY INC.	A650PR-D
6130	13016144	POWER SUPPLY	WHELEN ENGINEERING COMPANY INC.	C70178-1
6220	12099972	MOUNTING ADAPTER	WHELEN ENGINEERING COMPANY INC.	H102
6080	14330778	INSTALLATION KIT, FI	WHELEN ENGINEERING COMPANY INC.	HD-60
6220	13639713	LIGHT, RECOGNITION, A	WHELEN ENGINEERING COMPANY INC.	HRCFA-14-28R
6210	13657803	BEACON STROBE	WHELEN ENGINEERING COMPANY INC.	HRCFA-D 14/28R
5850	14072136	BEACON SET, INFRARED	WHELEN ENGINEERING COMPANY INC.	HRCFAD14-28
5850	14072136	BEACON SET, INFRARED	WHELEN ENGINEERING COMPANY INC.	HRCFAD14-28RED
5965	13734715	LOUDSPEAKER, PERMANE	WHELEN ENGINEERING COMPANY INC.	SA-340-ST5
5965	15150589	LOUDSPEAKER, PERMANE	WHELEN ENGINEERING COMPANY INC.	SA-340-TS
6220	14639825	LIGHT, RECOGNITION, A	WHELEN ENGINEERING COMPANY INC.	W1250-PG-28V
6220	14639824	LIGHT, RECOGNITION, A	WHELEN ENGINEERING COMPANY INC.	W1250-PR-28V
6220	13900750	LIGHT, NAVIGATIONAL	WHELEN ENGINEERING COMPANY INC.	W-1285-PG
6220	13900330	LIGHT, NAVIGATIONAL	WHELEN ENGINEERING COMPANY INC.	W-1285-PR
6350	13195597	SIREN AND PA SYSTEM	WHELEN ENGINEERING COMPANY INC.	WS-295HFS1E1
6240	11021555	LAMP, FLASHTUBE	WHELEN ENGINEERING COMPANY INC.	A469AD

NOTE: All non-FAA approved parts in this catalog are signified by a (—) in the approval column. Parts without FAA approval may still be purchased, however, installation of these parts on U. S. Type Certificated products will require additional FAA approvals.



2017 AVIATION LIGHTING CATALOG

Distributed by:



WARRANTY, SERVICE AND REPAIR

UNITED STATES

Whelen Engineering Co., Inc.
51 Winthrop Road Chester, CT 06412
Tel: 860-526-9504
Fax: 860-526-2009
www.whelen.com
aviation@whelen.com

AVIATION TECHNICAL SUPPORT

Tim Loftus
860-526-9504 Ext. 2335
tloftus@whelen.com

CUSTOMER SERVICE

860-526-9504 Ext. 6
custserv@whelen.com



Whelen Engineering reserves the right to upgrade and improve products without notice.
© 2017 Whelen Engineering Company, Inc. Printed in U.S.A.
Code No. 12308D - 01/03/2017