



contacts
are
green.

VPN industrial router
Telecontrol, remote maintenance
and alarm – simply and safely

Managing from a distance





Applications

- Energy systems
 - Wind turbines
 - Solar farms
 - Biogas cogeneration systems
 - Heat pumps, ...
- Water and waste water management
- System monitoring in machine building
 - Washing machines
 - Packaging machines
 - Compressors, ...
- External surveillance camera
- Vending
 - Telemetry online sales or ticket machines
- Smart metering
- Mobile fleet management



wienet VPN Industrial Router – unlimited M2M communication

Functionality which convinces

Wieland's **wienet** VPN industrial routers ensure increased efficiency and data security. Whether it is about the control of machines, monitoring of production lines or the co-ordination of all production areas a permanent communication between devices is needed to complete such a complex task. Access to stored data using wireless networks is not always possible or safe. Now Wieland develops with its modern router technology new fields of applications. For example control commands, level indicators or video signals can now be transmitted. At download speeds of up to 100 Mbit/s and upload speeds of up to 50 Mbits/s (depending on the network operator) the **wienet** VPN industrial router is sure to cover the available connectivity options of GPRS up to LTE. With automatic login **wienet** VPN industrial router will always access the fastest available connection.

Each router has its own IP address and can be configured through the integrated web interface.

It supports services such as DHCP, NAT and DynDNS. The routers communicate directly or via the control panel to open a secure VPN connection. The establishment of an IPSec encrypted tunnel is alternatively possible.

wienet VPN routers are ideal components for industrial use in conjunction with VPN-service portals, such as Wie-Service24.

With the arrangement of the ports on the front-panel and a standard USB port, the **wienet** VPN industrial router are extremely user friendly. A clear statistic of mobile connections is used for better control. Optionally, the devices are available with a second SIM card slot, additional I/O, RS-232, RS-422/RS-485, M-Bus, second Ethernet interface, WiFi module or integrated 3 port switch.

Advantages

- Expanded operating temperature range of -30°C to 70°C
- DIN top hat rail assembly
- An extremely robust aluminium housing

Industrial Mobile Router – GSM/GPRS/EDGE

wienet EDGE ER75iv2 SL „Basic“

- 1x SIM-card-slot
- 1x RJ45 port extension
- 1x USB

wienet EDGE ER75iv2f SL „Full“

- 2x SIM-card-slot
- 2x RJ45 port extension
- 1x USB

Supply scope:

- VPN Industrial router
- Magnetic foot antenna with 2.5 m cable
- Power supply unit
- RJ45 patch cable
- Variable top hat rail adapter
- USB stick



| Type | Port 1 | Port 2 | Part No. |
|----------------------------------|---------------|---------------|----------------------|
| wienet EDGE basic version | | | |
| ER75iv2 SL | - | - | 83.041.0000.1 |
| ER75iv2 SL RS232 | RS-232 | - | 83.041.0001.1 |
| ER75iv2 SL RS485/422 | RS-485/422 | - | 83.041.0002.1 |
| ER75iv2 SL MBUS | M-Bus | - | 83.041.0003.1 |
| ER75iv2 SL CNT | 4DI, 2DO, 2AI | - | 83.041.0004.1 |
| ER75iv2 SL ETH | Ethernet | - | 83.041.0005.1 |
| wienet EDGE full version | | | |
| ER75iv2f SL | - | - | 83.041.0100.1 |
| ER75iv2f SL RS232 | RS-232 | - | 83.041.0101.1 |
| ER75iv2f SL RS485/422 | RS-485/422 | - | 83.041.0102.1 |
| ER75iv2f SL MBUS | M-Bus | - | 83.041.0103.1 |
| ER75iv2f SL IO | IO | - | 83.041.0104.1 |
| ER75iv2f SL ETH | ETH | - | 83.041.0105.1 |
| ER75iv2f SL WIFI | - | WiFi/WLAN | 83.041.0160.1 |
| ER75iv2f SL SD | - | SD-FLASH | 83.041.0170.1 |
| ER75iv2f SL RS232 RS232 | RS-232 | RS-232 | 83.041.0111.1 |
| ER75iv2f SL RS485 RS232 | RS-485/422 | RS-232 | 83.041.0112.1 |
| ER75iv2f SL MBUS RS232 | M-Bus | RS-232 | 83.041.0113.1 |
| ER75iv2f SL CNT RS232 | IO | RS-232 | 83.041.0114.1 |
| ER75iv2f SL ETH RS232 | ETH | RS-232 | 83.041.0115.1 |
| ER75iv2f SL RS485 RS485 | RS-485/422 | RS-485/422 | 83.041.0122.1 |
| ER75iv2f SL MBUS RS485 | M-Bus | RS-485/422 | 83.041.0123.1 |
| ER75iv2f SL CNT RS485 | IO | RS-485/422 | 83.041.0124.1 |
| ER75iv2f SL ETH RS485 | ETH | RS-485/422 | 83.041.0125.1 |
| ER75iv2f SL RS232 WIFI | RS-232 | WiFi/WLAN | 83.041.0161.1 |
| ER75iv2f SL RS485 WIFI | RS-485/422 | WiFi/WLAN | 83.041.0162.1 |
| ER75iv2f SL MBUS WIFI | M-Bus | WiFi/WLAN | 83.041.0163.1 |
| ER75iv2f SL CNT WIFI | IO | WiFi/WLAN | 83.041.0164.1 |
| ER75iv2f SL ETH WIFI | ETH | WiFi/WLAN | 83.041.0165.1 |
| ER75iv2f SL 3P | 3-port Switch | 3-port Switch | 83.041.0199.1 |

preferred types

Technical Data

| | |
|---|--|
| Transmission | GSM/GPRS/EDGE (Class 10) |
| Frequency bands | 850/900/1800/1900 MHz |
| SIM-card-slots | 1 |
| RJ45-extension-ports | 1 |
| Interfaces | Ethernet 10/100 Mbit/s; USB 2.0 Type A (Host); 1x Digital In / 1x Digital Out |
| Max. Download/Upload | 236 Kbit/s / 118.4 Kbit/s |
| VPN-Client for encrypted connection to the control center | IPSec Client/Server; OpenVPN Client/Server; L2TP; PPTP |
| Mounting | DIN-rail or table |
| Operating voltage | 10 - 30 V DC |
| Operating temperature | -30 ... +60°C |
| Antenna | external GSM-antenna (SMA - 50 Ohm) |
| Dimensions (mm) WxHxD | 42x114x81 |
| Weight | 280 g |
| Approvals | CE |
| Norms | EN 301 511, v 9.0.2; EN 301 908-1&2, v 3.2.1; ETSI EN 301 489-1 V1.8.1; EN 60950-1:06 ed. 2 + A11:09 |

Functions

- Support of NAT/PAT and X.509
- Firewall (SPI)
- VPN: OpenVPN, IPsec, L2TP, GRE
- Easy web interface, DHCP, DynDNS, VRRP; Dial-in
- Router-control by SMS
- Comprehensive mobile statistic options
- Data volume-/roaming-control by SMS
- Status information by SNMP and SMS
- Status by LED
- FTP server
- Linux based operating system: ability to integrate their own applications

Industrial Mobile Router – UMTS/HSDPA/HSUPA/HSPA+

wienet HSPA+ UR5iv2 SL „Basic“

- 1x SIM-card-slot
- 1x RJ45 port extension
- 1x USB

wienet HSPA+ UR5iv2f SL Compact

- 2x SIM-card-slot
- 2x Ethernet (LAN-to-LAN or Switch-Bridge)
- Best price-performance ratio
- No USB interface

wienet HSPA+ UR5iv2f SL „Full“

- 2x SIM-card-slot
- 2x RJ45 port extension
- GPS (not in combination with WiFi)
- 1x USB

Supply scope:

VPN Industrial router
Magnetic foot antenna with 2.5 m cable
Power supply unit
RJ45 patch cable
Variable top hat rail adapter
USB stick



| Type | Port 1 | Port 2 | Part No. |
|-------------------------------------|---------------|---------------|-----------------------------|
| wienet HSPA+ basic version | | | |
| UR5iv2 SL | - | - | 83.041.0040.1 |
| UR5iv2 SL RS232 | RS-232 | - | 83.041.0041.1 |
| UR5iv2 SL RS485/422 | RS-485/422 | - | 83.041.0042.1 |
| UR5iv2 SL MBUS | M-Bus | - | 83.041.0043.1 |
| UR5iv2 SL CNT | 4DI, 2DO, 2AI | - | 83.041.0044.1 |
| UR5iv2 SL ETH | Ethernet | - | 83.041.0045.1 |
| wienet HSPA+ compact version | | | |
| UR5iv2f SL Compact | ETH | - | 83.041.0305.1 |
| wienet HSPA+ full version | | | |
| UR5iv2f SL | - | - | 83.041.0400.1 |
| UR5iv2f SL | - | - | 83.041.0400.2 ¹⁾ |
| UR5iv2f SL RS232 | RS-232 | - | 83.041.0401.1 |
| UR5iv2f SL RS232 | RS-232 | - | 83.041.0401.2 ¹⁾ |
| UR5iv2f SL RS485/422 | RS-485/422 | - | 83.041.0402.1 |
| UR5iv2f SL MBUS | M-Bus | - | 83.041.0403.1 |
| UR5iv2f SL IO | IO | - | 83.041.0404.1 |
| UR5iv2f SL IO | IO | - | 83.041.0404.2 ¹⁾ |
| UR5iv2f SL ETH | ETH | - | 83.041.0405.1 |
| UR5iv2f SL ETH | ETH | - | 83.041.0405.2 ¹⁾ |
| UR5iv2f SL WIFI | - | WiFi/WLAN | 83.041.0460.1 |
| UR5iv2f SL SD | - | SD-FLASH | 83.041.0470.1 |
| UR5iv2f SL RS232 RS232 | RS-232 | RS-232 | 83.041.0411.1 |
| UR5iv2f SL RS485 RS232 | RS-485/422 | RS-232 | 83.041.0412.1 |
| UR5iv2f SL MBUS RS232 | M-Bus | RS-232 | 83.041.0413.1 |
| UR5iv2f SL CNT RS232 | IO | RS-232 | 83.041.0414.1 |
| UR5iv2f SL ETH RS232 | ETH | RS-232 | 83.041.0415.1 |
| UR5iv2f SL ETH RS232 | ETH | RS-232 | 83.041.0415.2 ¹⁾ |
| UR5iv2f SL RS485 RS485 | RS-485/422 | RS-485/422 | 83.041.0422.1 |
| UR5iv2f SL MBUS RS485 | M-Bus | RS-485/422 | 83.041.0423.1 |
| UR5iv2f SL CNT RS485 | IO | RS-485/422 | 83.041.0424.1 |
| UR5iv2f SL ETH RS485 | ETH | RS-485/422 | 83.041.0425.1 |
| UR5iv2f SL ETH RS485 | ETH | RS-485/422 | 83.041.0425.2 ¹⁾ |
| UR5iv2f SL RS232 WIFI | RS-232 | WiFi/WLAN | 83.041.0461.1 |
| UR5iv2f SL RS485 WIFI | RS-485/422 | WiFi/WLAN | 83.041.0462.1 |
| UR5iv2f SL MBUS WIFI | M-Bus | WiFi/WLAN | 83.041.0463.1 |
| UR5iv2f SL CNT WIFI | IO | WiFi/WLAN | 83.041.0464.1 |
| UR5iv2f SL ETH WIFI | ETH | WiFi/WLAN | 83.041.0465.1 |
| UR5iv2f SL ETH WIFI | ETH | WiFi/WLAN | 83.041.0465.2 ¹⁾ |
| UR5iv2f SL 3P | 3-port Switch | 3-port Switch | 83.041.0499.1 |
| UR5iv2f SL 3P | 3-port Switch | 3-port Switch | 83.041.0499.2 ¹⁾ |

¹⁾ US/CAN version (expected from 2014)

preferred types

| Technical Data | |
|---|--|
| Transmission | GSM/GPRS/EDGE/UMTS/HSDPA/HSPA+ |
| Frequency bands | Quad-band UMTS (WCDMA): 850/900/1900/2100 MHz; Quad-band GSM/GPRS/EDGE: 850/900/1800/1900 MHz |
| SIM-card-slots | 1 |
| RJ45-extension-ports | 1 |
| Interfaces | Ethernet 10/100 Mbit/s; USB 2.0 Type A (Host); 1x Digital In / 1x Digital Out |
| Max. Download/Upload | 14.4 Mbit/s / 5.7 Mbit/s |
| VPN-Client for encrypted connection to the control center | IPSec Client/Server; OpenVPN Client/Server; L2TP; PPTP |
| Mounting | DIN-rail or table |
| Operating voltage | 10 - 30 V DC |
| Operating temperature | -30 ... +60°C |
| Antenna | external GSM-antenna (SMA - 50 Ohm) |
| Dimensions (mm) WxHxD | 42x114x81 |
| Weight | 280 g |
| Approvals | CE |
| Norms | EN 301 511, v 9.0.2; EN 301 908-1&2, v 3.2.1; ETSI EN 301 489-1 V1.8.1; EN 60950-1:06 ed. 2 + A11:09 |

Functions

Support of NAT/PAT and X.509
Firewall (SPI)
Easy web interface, DHCP, DynDNS, VRRP; Dial-in
Router-control by SMS, alerting via SMS and email
Comprehensive mobile statistic options
Data volume-/roaming-control by SMS
Status information by SNMP and SMS
Status by LED
FTP server
Integrated GPS receiver (full version only, not in combination with WiFi)
Linux based operating system: ability to integrate their own applications

Industrial Mobile Router – LTE 4G

wienet LTE LR77 v2 SL „Basic“

- 1x SIM-card-slot
- 1x RJ45 port extension
- 1x USB

wienet LTE LR77 v2f SL „Full“

- 2x SIM-card-slot
- 2x RJ45 port extension
- GPS (not in combination with WiFi)
- 1x USB

Supply scope:

- VPN Industrial router
- Magnetic foot antenna with 2.5 m cable
- Power supply unit
- RJ45 patch cable
- Variable top hat rail adapter
- USB stick



| Type | Port 1 | Port 2 | Part No. |
|---------------------------------|---------------|---------------|----------------------|
| wienet LTE basic version | | | |
| LR77v2 SL | - | - | 83.041.0050.1 |
| LR77v2 SL RS232 | RS-232 | - | 83.041.0051.1 |
| LR77v2 SL RS485/422 | RS-485/422 | - | 83.041.0052.1 |
| LR77v2 SL MBUS | M-Bus | - | 83.041.0053.1 |
| LR77v2 SL CNT | 4DI, 2DO, 2AI | - | 83.041.0054.1 |
| LR77v2 SL ETH | Ethernet | - | 83.041.0055.1 |
| wienet LTE full version | | | |
| LR77v2f SL | - | - | 83.041.0500.1 |
| LR77v2f SL RS232 | RS-232 | - | 83.041.0501.1 |
| LR77v2f SL RS485/422 | RS-485/422 | - | 83.041.0502.1 |
| LR77v2f SL MBUS | M-Bus | - | 83.041.0503.1 |
| LR77v2f SL IO | IO | - | 83.041.0504.1 |
| LR77v2f SL ETH | ETH | - | 83.041.0505.1 |
| LR77v2f SL WIFI | - | WiFi/WLAN | 83.041.0560.1 |
| LR77v2f SL SD | - | SD-FLASH | 83.041.0570.1 |
| LR77v2f SL RS232 RS232 | RS-232 | RS-232 | 83.041.0511.1 |
| LR77v2f SL RS485 RS232 | RS-485/422 | RS-232 | 83.041.0512.1 |
| LR77v2f SL MBUS RS232 | M-Bus | RS-232 | 83.041.0513.1 |
| LR77v2f SL CNT RS232 | IO | RS-232 | 83.041.0514.1 |
| LR77v2f SL ETH RS232 | ETH | RS-232 | 83.041.0515.1 |
| LR77v2f SL RS485 RS485 | RS-485/422 | RS-485/422 | 83.041.0522.1 |
| LR77v2f SL MBUS RS485 | M-Bus | RS-485/422 | 83.041.0523.1 |
| LR77v2f SL CNT RS485 | IO | RS-485/422 | 83.041.0524.1 |
| LR77v2f SL ETH RS485 | ETH | RS-485/422 | 83.041.0525.1 |
| LR77v2f SL RS232 WIFI | RS-232 | WiFi/WLAN | 83.041.0561.1 |
| LR77v2f SL RS485 WIFI | RS-485/422 | WiFi/WLAN | 83.041.0562.1 |
| LR77v2f SL MBUS WIFI | M-Bus | WiFi/WLAN | 83.041.0563.1 |
| LR77v2f SL CNT WIFI | IO | WiFi/WLAN | 83.041.0564.1 |
| LR77v2f SL ETH WIFI | ETH | WiFi/WLAN | 83.041.0565.1 |
| LR77v2f SL 3P | 3-port Switch | 3-port Switch | 83.041.0599.1 |

preferred types

Technical Data

| | |
|---|--|
| Transmission | GSM/GPRS/EDGE/UMTS/HSDPA/HSPA+/LTE |
| Frequency bands | LTE: 800/900/1800/2100/2600 MHz; UMTS: 900/2100 MHz; GSM/GPRS/EDGE: 900/1800/1900 MHz |
| SIM-card-slots | 1 |
| RJ45-extension-ports | 1 |
| Interfaces | Ethernet 10/100 Mbit/s; USB 2.0 Type A (Host); 1x Digital In / 1x Digital Out |
| Max. Download/Upload | 100 Mbit/s / 50 Mbit/s |
| VPN-Client for encrypted connection to the control center | IPSec Client/Server; OpenVPN Client/Server; L2TP; PPTP |
| Mounting | DIN-rail or table |
| Operating voltage | 10 - 30 V DC |
| Operating temperature | -30 ... +60°C |
| Antenna | external GSM-antenna (SMA - 50 Ohm) |
| Dimensions (mm) WxHxD | 42x114x81 |
| Weight | 280 g |
| Approvals | CE |
| Norms | EN 301 511, v 9.0.2; EN 301 908-1&2, v 3.2.1; ETSI EN 301 489-1 V1.8.1; EN 60950-1:06 ed. 2 + A11:09 |

Functions

- Support of NAT/PAT and X.509
- Firewall (SPI)
- Easy web interface, DHCP, DynDNS, VRRP; Dial-in
- Router-control by SMS
- Comprehensive mobile statistic options
- Data volume-/roaming-control by SMS
- Status information by SNMP and SMS
- Status by LED
- FTP server
- Integrated GPS receiver (full version only, not in combination with WiFi)
- Linux based operating system: ability to integrate their own applications

Industrial Router – LAN-to-LAN

wienet LAN XRi v2...

Supply scope:

- VPN Industrial router
- Power supply unit
- 2x RJ45 patch cable
- Variable top hat rail adapter
- USB stick



| Type | Port 1 | Port 2 | Part No. |
|---------------------------------|---------------|-----------|----------------------|
| wienet LAN-to-LAN-Router | | | |
| XR5iv2 ETH | Ethernet | - | 83.041.0605.1 |
| XR5iv2f SL ETH RS232 | Ethernet | RS-232 | 83.041.0615.1 |
| XR5iv2f SL ETH RS485 | Ethernet | RS-485 | 83.041.0625.1 |
| XR5iv2f SL ETH MBUS | Ethernet | M-Bus | 83.041.0635.1 |
| XR5iv2f SL WIFI | - | WiFi/WLAN | 83.041.0660.1 |
| XR5iv2f SL RS232 WIFI | RS-232 | WiFi/WLAN | 83.041.0661.1 |
| XR5iv2f SL RS485 WIFI | RS-485 | WiFi/WLAN | 83.041.0662.1 |
| XR5iv2f SL MBUS WIFI | M-Bus | WiFi/WLAN | 83.041.0663.1 |
| XR5iv2f SL IO WIFI | 4DI, 2DO, 2AI | WiFi/WLAN | 83.041.0664.1 |
| XR5iv2f SL ETH WIFI | Ethernet | WiFi/WLAN | 83.041.0665.1 |
| XR5iv2f SL ETH SD | Ethernet | SD-FLASH | 83.041.0675.1 |

preferred types

Technical Data


| | |
|---|--|
| Transmission | LAN-to-LAN, WiFi/WLAN |
| RJ45-extension-ports | 1 (basic version), 2 (full version) |
| Interfaces | Ethernet 10/100 Mbit/s; USB 2.0 Type A (Host); 1x Digital In / 1x Digital Out |
| Max. Download/Upload | 100 Mbit/s / 50 Mbit/s |
| VPN-Client for encrypted connection to the control center | IPSec Client/Server; OpenVPN Client/Server; L2TP; PPTP |
| Mounting | DIN-rail or table |
| Operating voltage | 10 - 30 V DC |
| Operating temperature | -30 ... +60°C |
| Antenna | external GSM-antenna (SMA - 50 Ohm) |
| Dimensions (mm) WxHxD | 42x114x81 |
| Weight | 280 g |
| Approvals | CE |
| Norms | ETSI EN 301 489-1 V1.8.1; EN 60950-1:06 ed. 2 + A11:09 + A1:10 |

Functions

| |
|---|
| Support of NAT/PAT and X.509 |
| Firewall (SPI) |
| Easy web interface, DHCP, DynDNS, VRRP; Dial-in |
| PPPoE - DSL-Modem Support |
| Status by LED |
| SNMP - Integration to the network management |
| FTP server |
| Linux based operating system: ability to integrate their own applications |


Accessories, VPN-Server „Wie-Service24“

**Omnidirectional rod antenna
wienet GXS606**



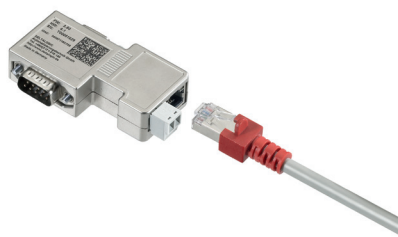
| Type | Part No. |
|-----------------------|-----------------------|
| wienet GXS606 | 83.041.0210.0 |
| Technical Data | |
| Frequency bandwidth | GSM, GPRS, EDGE, UMTS |
| Connector | FME/F |
| Gain | 2.2 dBi |
| Length of cable | 5 m |
| Length of rod (mm) | approx. 300 |

**Top flat antenna
wienet GXR623**



| Type | Part No. |
|-----------------------|-----------------------|
| wienet GXR623 | 83.041.0200.0 |
| Technical Data | |
| Frequency bandwidth | GSM, GPRS, EDGE, UMTS |
| Connector | FME/F |
| Gain | 2.2 dBi |
| Length of cable | 2.5 m |
| Dimensions (mm) | approx. 75 x 80 x 13 |

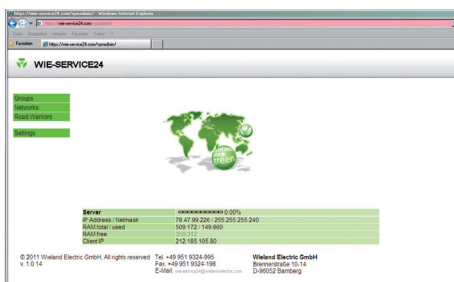
**Programming adapter
MPI-ETH ADAPTER
ACCON-NETLINK-PRO**



| Type | Part No. |
|---|--|
| MPI-ETH ADAPTER ACCON-NETLINK-PRO | F0.000.0031.8 |
| Technical Data | |
| Supported operating systems | no restriction |
| Hardware requirements | Ethernet interface and TCP/IP protocol |
| Supported SPS | S7-200, S7-300, S7-400 |
| Weight in kg | approx. 0.25 |
| Protection type | IP 20 |
| Operating voltage | 24 V DC ± 25% |
| External power supply | yes |
| Max. current consumption | 150 mA |
| Electrically isolated | yes |
| Operating temperature | 0 °C to 60 °C |
| Storage/transport temperature | -20 °C to 90 °C |
| Admissible relative air humidity | 5 % to 85 % at 30 °C (non-condensing) |
| Connection cable to the PLC | permanently mounted, active (no stub line, 1.2 m) |
| Connection cable to PC/router | patch cable (Ethernet, straight, 3 m) |
| Supported bus profiles | MPI, DP, standard, universal (DP/FMS), user-defined with automatic detection |
| Supported transmission rates from bus connection to PLC | 9.6 Kbit/s to 12 Mbit/s with automatic detection |
| Supported transmission rates, Ethernet | 10/100 Mbit/s with automatic detection |
| Max. number of connections on TCP/IP | 16 |

Additional VPN channels to VPN-server Wie-Service24

- Rent of additional VPN-tunnels to VPN-Server of Wieland Electric
- High availability of VPN connections
- Immediately usable
- Client access on the server



| Type | | Part No. |
|--|--|---------------|
| wienet WIE-SERVICE24-EINZEL-R | VPN-Router-Client | ZD.000.0011.0 |
| wienet WIE-SERVICE24-EINZEL-PC | VPN-PC-Client | ZD.000.0011.1 |
| Properties | | |
| Security by VPN | | |
| Automatic generation of router configurations | | |
| Only outgoing connections to the VPN server Wie-Service24 | | |
| No changes in the local network needed | | |
| Connection complete networks without additional route settings | | |
| Contract data | | |
| Calculation | 12 months in advance | |
| Termination | any time at the end of a month | |
| Administration | Wieland Electric | |
| Server hardware | Internet high-performance computing center | |

VPN server „Wie-Service24“

Compact VPN server „Smartservice24“

- VPN server portal is customer installation
- Administration at the customer
- High-availability VPN connections
- Adaptable layout



| Type | Installation | Part No. |
|------------------------------|-----------------------------------|---------------|
| wienet SMARTSERVICE24 | Pre-installed on compact LINUX-PC | ZD.000.0017.0 |

Features
The "Smartservice24" VPN server is the VPN portal, installed on a small, energy-saving hardware system, hence immediately operational and functional.

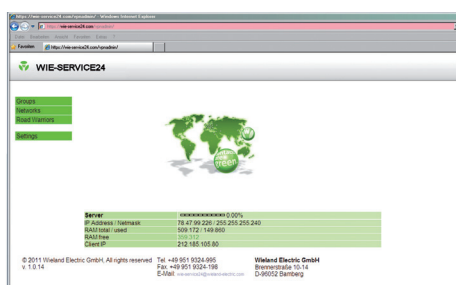
| | |
|-------------------------------|--|
| Networks | PPTP (Smartphone access); SSL; direct http:// or https:// WEB access to all web servers in the downstream network |
| VPN tunnel | maximum of 100 VPN connections; secure data encryption with OpenVPN (incl. X.509 certificates) |
| Configuration and diagnostics | configuration via web interface; network configuration for individual subscribers; certificates and configuration files for routers and road warriors automatically generated; status displays for individual connections; log files for routers and road warriors; SSH diagnostic potentials for network engineers; 1:1 NAT entire network; scalable number of VPN connections |
| Optional expansions | customized application, adaptable layout; 300 Mbit/s wireless module |
| Hardware specification | AMD Geode LX CPU, 500 MHz (LX800) 5x86 CPU; 256 MB SDRAM; 128 KB L1 cache; 128 KB L2 cache; 4 GB CompactFlash; without disc and fan |

| Technical data | |
|-----------------------------|--|
| Power supply | 7 V to 200 V DC |
| Power consumption | 7 W |
| Operating temperature range | 0 °C to 50 °C |
| Interfaces | 1x Ethernet (10/100 Mbit/s); 1x USB 2.0 type A; 1x serial interface; 2x Mini PCI ports; 1x VGA |
| Housing – dimensions | 113 x 163 x 30 mm |
| Housing – weight | 390 g |
| Mounting | not required (desktop device) |
| Complies with standards | |
| Norms | EN 61000-6-3 (2007); EN 61000-6-2 (2006); FCC 47 CFR Part 15 (2006) |

| Access parameters | |
|-------------------|--------------------|
| Web interface | http://192.168.1.1 |
| User name | root |
| Password | root |

Customer installation of the VPN server Wie-Service24

- Customer installation of the VPN server
- Administration on customer side
- High availability of VPN connections
- Customized layout possible



| Type | Installation | Part No. |
|---------------------------------------|--|---|
| wienet WIESERVICE24-VM | Virtual machine "Oracle Virtual Box" | ZD.000.0012.0 |
| wienet WIESERVICE24-IPC SAVE | On energy-saving PC hardware | ZD.000.0013.0 |
| wienet WIESERVICE24-IPC HIGH | On High Performance 19" PC | ZD.000.0014.0 |
| wienet WIESERVICE24-DC CUSTOM | In customer data center | ZD.000.0015.0 |
| wienet WIESERVICE24-DC INTERN. | In internet data center ("in the cloud") | ZD.000.0016.0 preferably |

Properties
Security by VPN
Automatic generation of router configurations
Only outgoing connections to the VPN server Wie-Service24
No changes in the local network needed
Connection complete networks without additional route settings

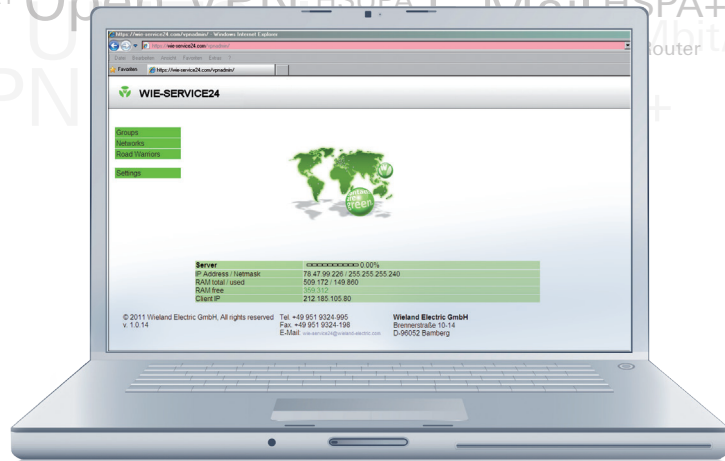
| Contract data | |
|---------------------------|------------|
| Calculation | fixed rate |
| Number of VPN connections | > 1000 |
| Administration | customer |
| Server hardware | selectable |

M2M Device Management in its own M2M Cloud

Wie-Service24



Open VPN HSDPA
 DynDNS SMS Highspeed Router GPRS
 GSM EDGE HSDPA UMTS Ipsec 21,1 Mbit/s
 HSPA+ Open VPN HSPA+
 HSPA+ Open VPN HSPA+



A perfect team

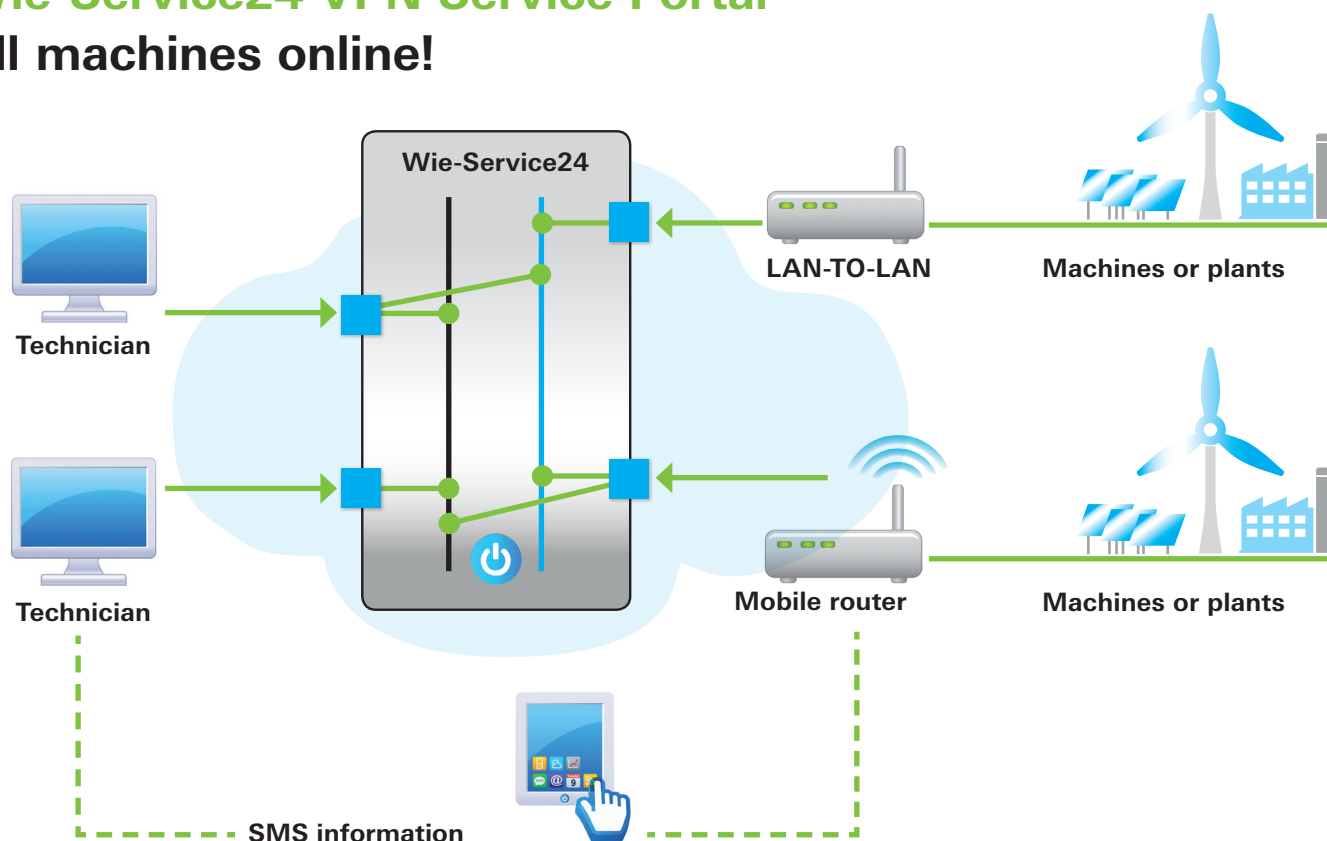
Wieland's **wienet** industrial routers and the Wie-Service24 VPN service portal makes M2M cloud communication child's play. Individual devices and even entire systems are securely and reliably connected together – guaranteed by the modular router concept and the cloud-based management solution Wie-Service24.

Advantages

- Security by VPN
- Automatic generation of router configuration
- Only outgoing connections towards Wie-Service24 are necessary
- No changes inside the local network is necessary
- Interconnection of complete networks, without additional routing configuration
- Little coordination with IT department and easy commissioning
- Mobile access by Smartphone or tablet to all devices behind the router
- directRemote: Direct access with all internet browser by a clearly URL

Wie-Service24 VPN Service Portal

All machines online!



The Wie-Service24 VPN service portal is available in different configurations:

You can try the working with the VPN-server Wie-Service24 with up to 30 routers and one PC client for free. If you need further VPN clients you can rent more router and PC clients. We propose the installation of your own customer VPN server portal. Installation of the portal on a virtual machine, on an industrial PC, data center at customer site or a data center on an internet server.

| | Single access | Virtual machine | Industrial PC | Data center Server at Customer | Data center Internet server |
|------------------------|---|---------------------|---|--------------------------------|-----------------------------|
| Part-No. | ZD.000.0011.0 (Router) ZD.000.0011.1 (PC-Client) | ZD.000.0012.0 | ZD.000.0013.0 (Energy Saving) ZD.000.0014.0 (High Performance) | ZD.000.0015.0 | ZD.000.0016.0 |
| User access | • | • | • | • | • |
| Administrator access | – | • | • | • | • |
| Server hardware from | Wieland | Customer | Wieland | Customer | Provider |
| Internet connection by | Wieland | Customer | Customer | Customer | Provider |
| Installation by | Wieland | Customer or Wieland | Wieland | Wieland | Wieland |



More information is available from our technical support:

Telefon +49 951 9324-995
 Telefax +49 951 9326-991
 wie-service24@wieland-electric.com



wieland

Headquarters:
Wieland Electric GmbH
Brennerstraße 10 – 14
96052 Bamberg, Germany

Sales Center:
Wieland Electric GmbH
Benzstraße 9
96052 Bamberg, Germany

Phone +49 951 9324-0
Fax +49 951 9324-198
www.wieland-electric.com
info@wieland-electric.com

The addresses of our
representations worldwide
are available at:
www.wieland-electric.com

Industrial technology

Solutions for the control cabinet

- DIN rail terminal blocks
 - Screw, tension spring or push-in connection technology
 - Wire cross sections up to 240 mm²
 - Numerous special functions
 - Software solutions interfacing to CAE systems
- Safety
 - Safe signal acquisition
 - Safety switching devices
 - Modular safety modules
 - Compact safety controllers
 - Application consulting and training
- Network engineering and fieldbus systems
 - Remote maintenance via VPN industrial router and VPN service portal
 - Industrial Ethernet switches
 - PLC and I/O systems, standard and increased environmental conditions
- Interface
 - Power supply units
 - Overvoltage protection
 - Coupling relays, semiconductor switches
 - Timer relays, measuring and monitoring relays
 - Analog coupling and converter modules
 - Passive interfaces

Solutions for field applications

- Decentralized installation and automation technology
 - Electrical installation for wind tower
 - Fieldbus interfaces and motor starters
- Connectors for industrial applications
 - Rectangular and round connectors
 - Aluminium or plastic housings
 - Degree of protection up to IP68
 - Current-carrying capacity up to 100 A
 - Connectors for hazardous areas
 - Modular, application-specific technology

PC board terminals and connectors

- Screw or spring clamp connection technology
- Spacings: 3.5 mm to 10.16 mm
- Reflow or wave soldering process

Building and installation technology

- Building installation systems
 - Main power supply connectors IP20/IP65...IP68
 - Bus connectors
 - Low-voltage connectors
 - Power distribution system with flat cables
 - Distribution systems
 - Bus systems in KNX, LON and wireless technology
 - DIN rail terminal blocks for electrical installations
 - Overvoltage protection

0810.1 B 11/13

contacts
are
green.