



**Lift Technology**  
Solutions for the electrical installation



„Driven by the desires of our customers and the needs of the industry, we develop safe, as well as fast, convenient, and cost-efficient components for elevator technology“

CHRISTOF SOFSKY  
Head of Sales, Mechanical Engineering

## Wieland Electric – your competence partner for all areas of lift equipment and lift technology



### Safety and monitoring in the control cabinet

The extensive safety technology product line makes it easy for you to adapt solutions for new buildings and retrofit elevator systems. To increase availability, monitoring modules, also for remote maintenance communication are available.

- **safe** RELAY
- **samos** PRO
- **samos** PLAN5+ software tool
- **wienet**
- **wipos**
- **flare** CONTROL



### Peripheral devices – simply and easily connected

The innovative installation technology from Wieland enables fast, safe, and also flexible installation. Thus technology becomes easier and safer to handle, and it also becomes more compact.

- **podis** | **gesis**
- **revos** heavy duty connectors
- **fasis**
- **RST** circular plug-in connectors
- **FSC-System**



### Customized Solutions

Concentrate on your strengths – we do the rest. Wieland offers its customers individual service solutions and product solutions, custom-tailored to their requirements.

**Ask us!**





Top-Innovator  
2015

Wieland electric was awarded as one of the most innovative german SMEs, already for the seventh time.

## The lift **CONTROL CABINET** equipped with system components from Wieland!

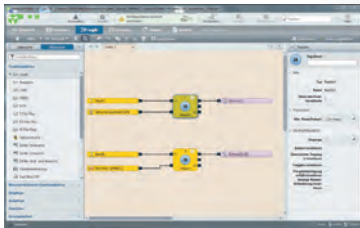
**safe** RELAY: For zone monitoring of the elevator car or service shaft, door monitoring or UCM. Safety switching devices with diagnostic function for reduced downtimes

**Tested in accordance with EN 81.**



**samos**<sup>®</sup> PRO: The modular and extremely flexible solution. Easily programmable with license-free software tool. Thanks to the simulation function and extensive diagnostics, commissioning times can be significantly reduced.

**Tested in accordance with EN 81.**



**samos**<sup>®</sup> PLAN5+ software tool



**wipos**: Power supply units with robust, proven technology without knick-nacks. This includes 100% power to 60°C, PFC technology and long power outage bridge times. Redundancy module and uninterruptible power supply increase availability.

**Installation: fast, robust and safe!**





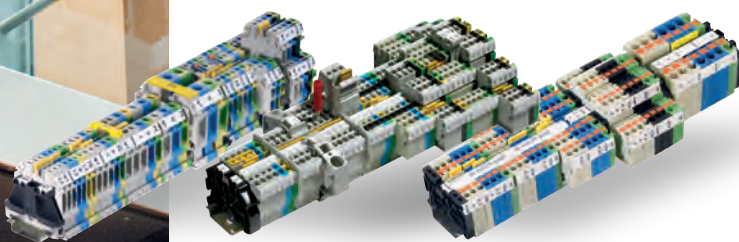
**flare** CONTROL: The universal implementation and variety of functions facilitate project planning and stock-keeping. The phase monitoring device detects failure of one or multiple phases, as well as a wrong phase sequence.



**wienet**: The VPN router family offers versatile remote functionality from LAN-to-LAN to fast LTE mobile wireless connection. An additional digital input and output permit direct evaluation of the alarms or remote-controlled switching.



**Wie-Service24**: The combination of Wie-Service24 and Wieland routers enables fast commissioning of the routers and maximum security of the VPN connection. Thanks to the automation of important settings, possible error sources are minimized.

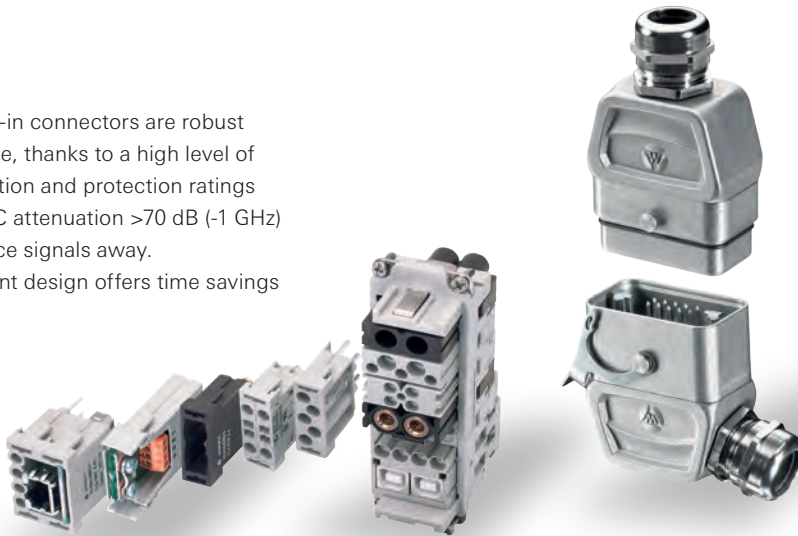


**Wieland DIN rail terminal blocks**: A system with all connection technologies. Standardized accessories reduce inventory. Compact design and test possibilities increase the efficiency of the system.

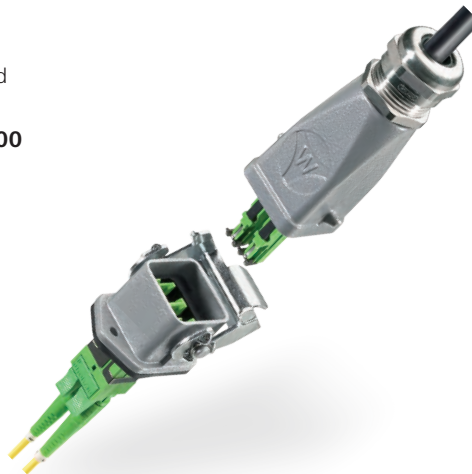


# Plug-in lift Infrastructur and modular design

**revos:** The plug-in connectors are robust and indestructible, thanks to a high level of corrosion protection and protection ratings up to IP69k. EMC attenuation >70 dB (-1 GHz) keeps interference signals away. The easy to mount design offers time savings up to 30%.



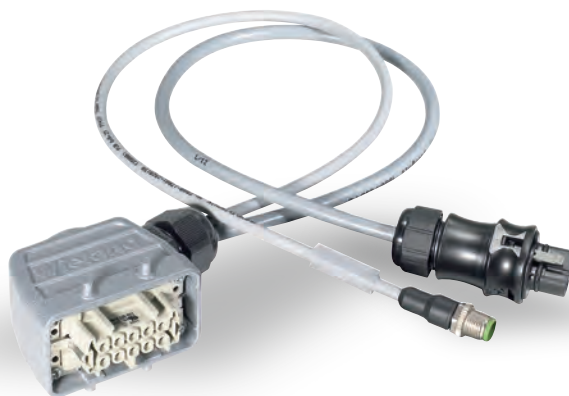
Fiber optic cables are particularly well suited for interference free data transmission over great distances. In this regard, **revos E-2000** offers the robust, pluggable solution. The system can be quickly and easily installed, and in addition it can also be assembled in the field.





**revosIT:** The robust and fast feed-through of pre-assembled lines into the control cabinet. On-site connector assembly can be dispensed with, and the manufacturer's guarantee on the pre-assembled cable remains intact.

**Connection: Fast, robust, and safe!**



**Lines** that are individually matched to your requirements, combined with a wide variety of components can be delivered project-specifically in all lengths.



The patented **FSC system** combines lead-through and distribution of signal lines in a special compact form. Intelligent electronics can be directly integrated.

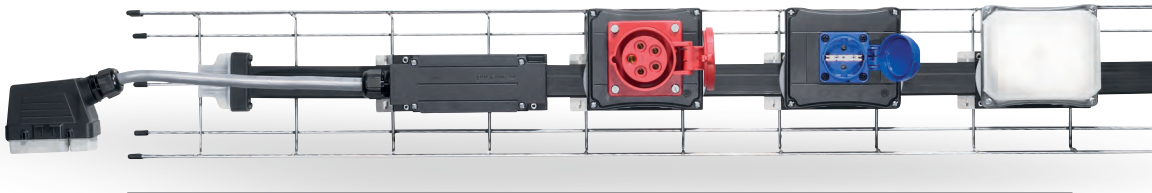
Pluggability to the inside and outside enables fast installation. The virtually unlimited coding variety makes this safe and error-free.



## Infrastructure in the elevator shaft: fast + flexible installation!

Fast mounting in the basket tray for easy provision of infrastructure in your elevator shaft, lighting included.

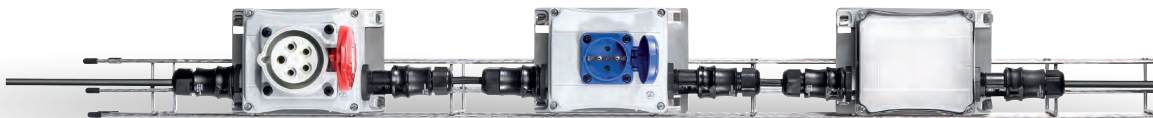
With the **podis**<sup>®</sup> energy bus you are **five times** faster as compared to conventional installation, and commissioning is fast and error-free. Connection is executed close to the consumers at any point desired, completely without any dismantling or stripping whatsoever.



**podis**<sup>®</sup> LED luminaires with their robust and long-life design and outstanding lighting quality are the reliable solution for use in industrial areas. **podis**<sup>®</sup> LED 2 klm is maintenance-free and corrosion-resistant, particularly suitable for illumination of working spaces and lift shafts.



**RST:** The round plug-in connector from the **gesis**<sup>®</sup> installation system enables fast and safe power distribution from **IP65** to **IP68**. Thus infrastructure is quickly provided.





## The ideal solutions for your concepts!



### Flexibility and plug-in ease

Save time and money thanks to flexibility, modular design and plug-in ease. In lift cabling with preassembled cables and cabinets.

Our cabling solution can be easily adapted to the requirement of each lift application. These pluggable solutions allow to install fast and safe.



We would be pleased to assemble the finished **terminal strip** for you. This saves you long assembly times and complex logistics.



In addition, we make the tailored solution for your application pluggable – for fast and easy installation. Talk to us about the suitable concept.



## Technical consultation and general information

### Hotline – one call is all it takes

#### Industrial Automation – Electromechanical

Hotline **+49 951 9324-991**  
E-Mail **AT.TS@wieland-electric.com**

#### Building and Installation Technology

Hotline **+49 951 9324-996**  
E-Mail **BIT.TS@wieland-electric.com**

#### Industrial Automation – Electronics

Hotline **+49 951 9324-995**  
E-Mail **AT.TS@wieland-electric.com**

#### Safety

Hotline **+49 951 9324-999**  
E-Mail **safety@wieland-electric.com**



General information and news:  
[www.wieland-electric.com](http://www.wieland-electric.com)

Visit our e-catalog at  
<http://eshop.wieland-electric.com>





### Product portfolio

- Electronic and electrical engineering for the control cabinet
- Safety technology
- Network and field bus systems
- Energy bus systems for industry and buildings
- Connectors up to protection type IP6X
- Building automation
- PCB terminals and plug connectors
- Sensor/actuator cabling



### Industries

- Machine building
- Construction machines & cranes
- Buildings and lighting
- Logistics
- Power engineering
- Renewable energy sources
- Heating, ventilation and air conditioning systems



### Business services

- Pre-assembly and wiring
- Product labeling service
- Integrated solutions inside distributors
- Customized solutions
- On-site project support
- Optimization of decentralized, pluggable installation solutions
- Certified machine safety tests



### Safety training

- Software validation
- CSE certified safety engineers
- Basics and standards of functional safety
- Modification of old machines and major changes
- Design of safety functions and calculation with Sistema
- Machinery Directive, liability issues and CE conformity explanations



### Software/configuration tools

- **wiemarc**, labeling of terminal strips
- **wieplan**, configuration of terminal strips
- **revos** configurator for connectors
- **gesis**®PLAN for building installation
- **podis**®PLAN for configuring the **podis**® energy bus system
- **samos**®PLAN5+, programming tool for **samos**®PRO COMPACT



### Why Wieland?

- Standardized industrial solutions
- Customized solutions
- Support for your project
- Broad product portfolio
- Application worldwide due to international licenses
- Group-wide observance of human rights, including at suppliers
- Eco-friendly production





# wieland



**USA**  
**Wieland Electric Inc.**  
**North American Headquarters**  
 2889 Brighton Road  
 Oakville, Ontario L6H 6C9  
 Phone +1 905 8298414  
 Fax +1 905 829 413  
[www.wielandinc.com](http://www.wielandinc.com)



**CANADA**  
**Wieland Electric Inc.**  
**North American Headquarters**  
 2889 Brighton Road  
 Oakville, Ontario L6H 6C9  
 Phone +1 905 8298414  
 Fax +1 905 829 413  
[www.wieland-electric.ca](http://www.wieland-electric.ca)



**GREAT BRITAIN**  
**Wieland Electric Ltd.**  
 Riverside Business Center,  
 Walnut Tree Close  
 GB Guildford/Surrey GU1 4UG  
 Phone +44 1483 531213  
 Fax +44 1483 505029  
[sales.uk@wieland-electric.com](mailto:sales.uk@wieland-electric.com)  
[www.wieland.co.uk](http://www.wieland.co.uk)



**FRANCE**  
**Wieland Electric SARL.**  
 Le Cérame, Hall 6  
 47, avenue des Genottes  
 CS 48313,  
 95803 Cergy-Pontoise Cedex  
 Phone +33 1 30320707  
 Fax +33 1 30320717  
[info.france@wieland-electric.com](mailto:info.france@wieland-electric.com)  
[www.wieland-electric.fr](http://www.wieland-electric.fr)



**SPAIN**  
**Wieland Electric S.L.**  
 C/ Maria Auxiliadora 2, bajos  
 E-08017 Barcelona  
 Phone +34 93 2523820  
 Fax +34 93 2523825  
[ventas@wieland-electric.com](mailto:ventas@wieland-electric.com)  
[www.wieland-electric.es](http://www.wieland-electric.es)



**ITALY**  
**Wieland Electric S.r.l.**  
 Via Edison, 209  
 I-20019 Settimo Milanese  
 Phone +39 02 48 916357  
 Fax +39 02 48 920685  
[info.italy@wieland-electric.com](mailto:info.italy@wieland-electric.com)  
[www.wieland-electric.it](http://www.wieland-electric.it)



**BELGIUM & GH LUXEMBOURG**  
**ATEM-Wieland Electric NV**  
 Bedrijvenpark De Veert 4  
 B-2830 Willebroek  
 Phone +32 3 8661800  
 Fax +32 3 8661828  
[info.belgium@wieland-electric.com](mailto:info.belgium@wieland-electric.com)  
[www.wieland-electric.be](http://www.wieland-electric.be)



**DENMARK**  
**Wieland Electric A/S**  
 Vallørækken 26  
 DK-4600 Køge  
 Phone +45 70 266635  
 Fax +45 70 266637  
[sales.denmark@wieland-electric.com](mailto:sales.denmark@wieland-electric.com)  
[www.wieland-electric.dk](http://www.wieland-electric.dk)



**SWITZERLAND**  
**Wieland Electric AG**  
 Harzachstrasse 2b  
 CH-8404 Winterthur  
 Phone +41 52 2352100  
 Fax +41 52 2352119  
[info.swiss@wieland-electric.com](mailto:info.swiss@wieland-electric.com)  
[www.wieland-electric.ch](http://www.wieland-electric.ch)



**POLAND**  
**Wieland Electric Sp. z o.o.**  
 Św. Antoniego 8  
 62-080 Swadzim  
 Phone +48 61 2225400  
 Fax +48 61 8407166  
[office@wieland-electric.pl](mailto:office@wieland-electric.pl)  
[www.wieland-electric.pl](http://www.wieland-electric.pl)



**CHINA**  
**Wieland Electric Trading**  
 Unit 2703 International Soho City  
 889 Renmin Road,  
 Huang Pu District  
 PRC-Shanghai 200010  
 Phone +86 21 63555833  
 Fax +86 21 63550090  
[info-shanghai@wieland-electric.com](mailto:info-shanghai@wieland-electric.com)  
[www.wieland-electric.cn](http://www.wieland-electric.cn)



**JAPAN**  
**Wieland Electric Co, Ltd.**  
 Nisso No. 16 Bldg. 7F  
 3-8-8 Shin-Yokohama,  
 Kohoku-ku  
 Yokohama 222-0033  
 Phone +81 45 473 5085  
 Fax +81 45 470 5408  
[info-japan@wieland-electric.com](mailto:info-japan@wieland-electric.com)



**GERMANY**  
**Headquarters**  
**Wieland Electric GmbH**  
 Brennerstraße 10 – 14  
 96052 Bamberg, Germany  
 Phone +49 951 9324-0  
 Fax +49 951 9324-198  
[info@wieland-electric.com](mailto:info@wieland-electric.com)  
[www.wieland-electric.de](http://www.wieland-electric.de)

**Sales Partner:**

**You can reach us worldwide in more than 70 countries.  
 Find the contact address at: [www.wieland-electric.com](http://www.wieland-electric.com)**

Subject to technical modifications!  
**gesis**®, **RST**®, **GST**®, **GST18**®, **podis**®, **samos**® and **saris**®  
 are registered trademarks of Wieland Electric GmbH

# contacts are green.