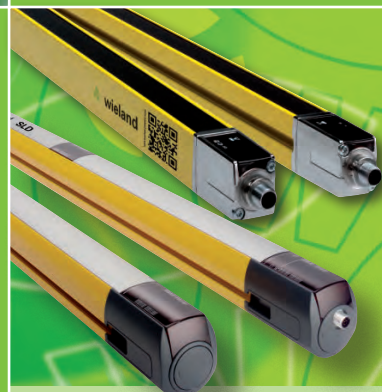




Accessories for
**SLC Series –
Safety Light Curtains**
**SLD Series –
Safety Light Grids**

Everything is safe

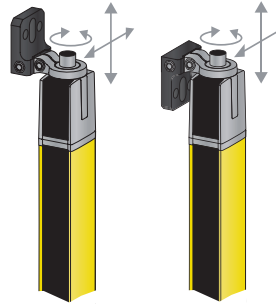


Mounting accessories – Series SLC



SLX-MO-RO1

The swivel mount set **SLX-MO-RO1** is used for wall mounting of series SLC (360° horizontal adjustment possible).



Mounting accessories – Series SLD



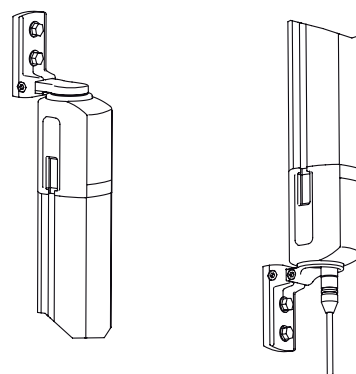
SLX-MO-RO-SET1

The swivel mount set **SLX-MO-RO-SET1 (SLX-MO-RO-SET1S** with shock absorber) is used for wall mounting of Transmitter, Receiver and Transceiver from series SLD (240° horizontal adjustment possible).



SLX-MO-RO-SET2

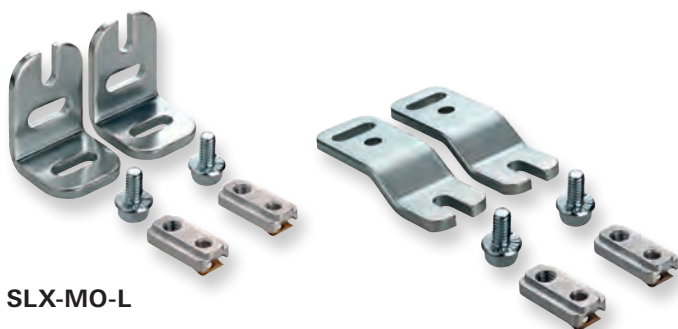
The swivel mount set **SLX-MO-RO-SET2 (SLX-MO-RO-SET2S** with shock absorber) is used for wall mounting of Mirror from series SLD (240° horizontal adjustment possible).



Overview of devices | part numbers

Type	Description	Part no.	Std. pack
SLX-MO-RO1	Rotative bracket 360°, 2 pcs., inkl. 1 pcs. SLC cylinder	R1.591.0006.0	1
SLX-MO-RO-SET1	Set with SLX-MO-RO-B + SLX-MO-RO-C + screws	R1.591.0011.0	1
SLX-MO-RO-SET2	Set with 2 x SLX-MO-RO-C + screws	R1.591.0012.0	1
SLX-MO-RO-SET1-S	Set with SLX-MO-RO-B, SLX-MO-RO-C + screws + Shockabsorber	R1.591.0013.0	1
SLX-MO-RO-SET2-S	Set with 2 x SLX-MO-RO-C + screws + Shockabsorber	R1.591.0014.0	1

Mounting accessories – Series SLC/SLD



SLX-MO-L

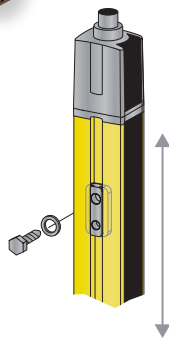
SLX-MO-Z



SLX-MO-TNUT

The **SLX-MO-TNUT** sets including sliding blocks for mounting of series SLC/SLD.

The **SLX-MO-L** and **SLX-MO-Z** sets are used for wall mounting of series SLC/SLD in combination with sliding blocks SLX-MO-TNUT.



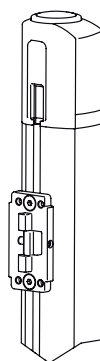
SLX-MO-RO270-S



SLX-MO-CLIP

The **SLX-MO-CLIP** is used for fixed mounting of series SLC/SLD in device columns SLX-COL.

The swiveling mounting brackets **SLX-MO-RO-S** and **SLX-MO-RO270-S** are used for mounting series SLC/SLD in device columns SLX-COL. These brackets are adjustable and with vibration damping.



Overview of devices | part numbers

Type	Description	Part no.	Std. pack
SLX-MO-L	L-Bracket, 2 pcs.	R1.591.0004.0	1
SLX-MO-Z	Z-Bracket, 2 pcs.	R1.591.0005.0	1
SLX-MO-TNUTM6	Set Slot nut with M6-screw thread, 10 pcs.	R1.591.0001.0	1
SLX-MO-TNUTM6M4	Set Slot nut with M6- and M4-screw thread, 10 pcs.	R1.591.0002.0	1
SLX-MO-TNUTM6M5	Set Slot nut with M6- and M5-screw thread, 10 pcs.	R1.591.0003.0	1
SLX-MO-RO-S	Rotative bracket with Shockabsorber, 70mm lang, 2 pcs.	R1.591.0007.0	1
SLX-MO-RO270-S	Rotative bracket with Shockabsorber, 270mm lang, 2 pcs.	R1.591.0008.0	1
SLX-MO-CLIP	Clamp bracket, for Installation in Device column	R1.591.0009.0	1
SLX-MO-CLIP2	Set Clamp bracket, for Installation in Device column, 2 pcs.	R1.591.0010.0	1

Mounting accessories – Series SLC/SLD



SLX-CAB-M12-xxxxx

Connection cables SLC/SLD

The connection cables **SLX-CAB-M12-xxxxx** (shielded and unshielded) are used for the electrical connection of series SLC/SLD by M12-connector (5- or 8-pole).



SLC-PRO-xxxx

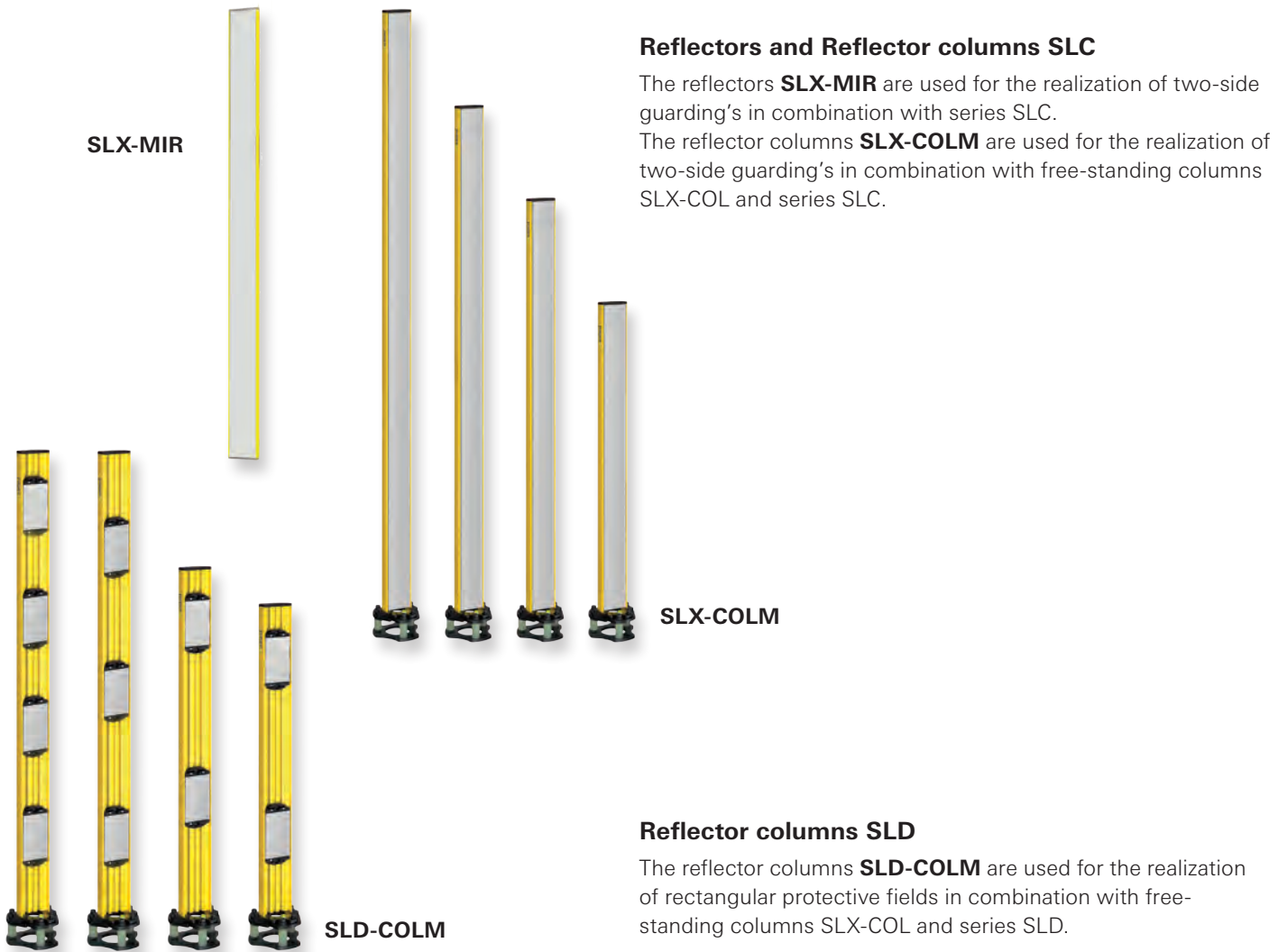
Protective screen SLC

The protective screens **SLC-PRO** are used for the protection of the front of series SLC.

Overview of devices | part numbers

Type	Description	Part no.	Std. pack
SLX-CAB-M12-S0505	Connection cable M12, 5-pole, Length 5m, shielded	R1.600.0505.0	1
SLX-CAB-M12-S0510	Connection cable M12, 5-pole, Length 10m, shielded	R1.600.0510.0	1
SLX-CAB-M12-S0515	Connection cable M12, 5-pole, Length 15m, shielded	R1.600.0515.0	1
SLX-CAB-M12-S0525	Connection cable M12, 5-pole, Length 25m, shielded	R1.600.0525.0	1
SLX-CAB-M12-S0550	Connection cable M12, 5-pole, Length 50m, shielded	R1.600.0550.0	1
SLX-CAB-M12-S0805	Connection cable M12, 8-pole, Length 5m, shielded	R1.600.0805.0	1
SLX-CAB-M12-S0810	Connection cable M12, 8-pole, Length 10m, shielded	R1.600.0810.0	1
SLX-CAB-M12-S0815	Connection cable M12, 8-pole, Length 15m, shielded	R1.600.0815.0	1
SLX-CAB-M12-S0825	Connection cable M12, 8-pole, Length 25m, shielded	R1.600.0825.0	1
SLX-CAB-M12-S0850	Connection cable M12, 8-pole, Length 50m, shielded	R1.600.0850.0	1
SLX-CAB-M12-0505	Connection cable M12, 5-pole, Length 5m, unshielded	R1.500.0505.0	1
SLX-CAB-M12-0510	Connection cable M12, 5-pole, Length 10m, unshielded	R1.500.0510.0	1
SLX-CAB-M12-0515	Connection cable M12, 5-pole, Length 15m, unshielded	R1.500.0515.0	1
SLX-CAB-M12-0525	Connection cable M12, 5-pole, Length 25m, unshielded	R1.500.0525.0	1
SLX-CAB-M12-0550	Connection cable M12, 5-pole, Length 50m, unshielded	R1.500.0550.0	1
SLX-CAB-M12-0805	Connection cable M12, 8-pole, Length 5m, unshielded	R1.500.0805.0	1
SLX-CAB-M12-0810	Connection cable M12, 8-pole, Length 10m, unshielded	R1.500.0810.0	1
SLX-CAB-M12-0815	Connection cable M12, 8-pole, Length 15m, unshielded	R1.500.0815.0	1
SLX-CAB-M12-0825	Connection cable M12, 8-pole, Length 25m, unshielded	R1.500.0825.0	1
SLX-CAB-M12-0850	Connection cable M12, 8-pole, Length 50m, unshielded	R1.500.0850.0	1
SLC-PRO-0150	SLC-Protective glass, Length: 148 mm	R1.502.0150.0	1
SLC-PRO-0225	SLC-Protective glass, Length: 223 mm	R1.502.0225.0	1
SLC-PRO-0300	SLC-Protective glass, Length: 298 mm	R1.502.0300.0	1
SLC-PRO-0450	SLC-Protective glass, Length: 448 mm	R1.502.0450.0	1
SLC-PRO-0600	SLC-Protective glass, Length: 598 mm	R1.502.0600.0	1
SLC-PRO-0750	SLC-Protective glass, Length: 748 mm	R1.502.0750.0	1
SLC-PRO-0900	SLC-Protective glass, Length: 898 mm	R1.502.0900.0	1
SLC-PRO-1050	SLC-Protective glass, Length: 1048 mm	R1.502.1050.0	1
SLC-PRO-1200	SLC-Protective glass, Length: 1198 mm	R1.502.1200.0	1
SLC-PRO-1350	SLC-Protective glass, Length: 1348 mm	R1.502.1350.0	1
SLC-PRO-1500	SLC-Protective glass, Length: 1498 mm	R1.502.1500.0	1
SLC-PRO-1650	SLC-Protective glass, Length: 1648 mm	R1.502.1650.0	1
SLC-PRO-1800	SLC-Protective glass, Length: 1798 mm	R1.502.1800.0	1
SLC-PRO-FIX2	Mounting bracket for SLC-Protective glass, 2 pcs.	R1.502.0002.0	1
SLC-PRO-FIX3	Mounting bracket for SLC-Protective glass, 3 pcs.	R1.502.0003.0	1

Reflectors and reflector columns – Series SLC/SLD



Reflectors and Reflector columns SLC

The reflectors **SLX-MIR** are used for the realization of two-side guarding's in combination with series SLC.
The reflector columns **SLX-COLM** are used for the realization of two-side guarding's in combination with free-standing columns SLX-COL and series SLC.

Reflector columns SLD

The reflector columns **SLD-COLM** are used for the realization of rectangular protective fields in combination with free-standing columns SLX-COL and series SLD.

Overview of devices | part numbers

Type	Description	Part no.	Std. pack
SLX-COLM-1000	Reflector column, persistent 1000 mm	R1.594.1000.0	1
SLX-COLM-1300	Reflector column, persistent 1300 mm	R1.594.1300.0	1
SLX-COLM-1600	Reflector column, persistent 1600 mm	R1.594.1600.0	1
SLX-COLM-1900	Reflector column, persistent 1900 mm	R1.594.1900.0	1
SLX-MIR-0150	Reflector, length: 210 mm	R1.595.0150.0	1
SLX-MIR-0300	Reflector, length: 360 mm	R1.595.0300.0	1
SLX-MIR-0450	Reflector, length: 510 mm	R1.595.0450.0	1
SLX-MIR-0600	Reflector, length: 660 mm	R1.595.0600.0	1
SLX-MIR-0750	Reflector, length: 810 mm	R1.595.0750.0	1
SLX-MIR-0900	Reflector, length: 960 mm	R1.595.0900.0	1
SLX-MIR-1050	Reflector, length: 1110 mm	R1.595.1050.0	1
SLX-MIR-1200	Reflector, length: 1260 mm	R1.595.1200.0	1
SLX-MIR-1350	Reflector, length: 1410 mm	R1.595.1350.0	1
SLX-MIR-1500	Reflector, length: 1560 mm	R1.595.1500.0	1
SLX-MIR-1650	Reflector, length: 1710 mm	R1.595.1650.0	1
SLX-MIR-1800	Reflector, length: 1860 mm	R1.595.1800.0	1
SLX-MIR-FIX2	Bracket for SLX-MIR-reflector, 2 pcs.	R1.595.0002.0	1
SLD-COLM2-0900	Reflector column, Reflector distance: 500 mm; Total height: 900 mm	R1.604.0900.0	1
SLD-COLM2-1060	Reflector column, Reflector distance: 500 mm; Total height: 1060 mm	R1.604.1060.0	1
SLD-COLM3-1360	Reflector column, Reflector distance: 400 mm; Total height: 1360 mm	R1.604.1363.0	1
SLD-COLM4-1360	Reflector column, Reflector distance: 300 mm; Total height: 1360 mm	R1.604.1364.0	1
SLD-MIR	Replacement reflector for SLD-Reflector columnn	R1.604.0001.0	1

Device columns – Series SLC/SLD



SLX-COL



The device columns **SLX-COL** are used for a free-standing installation of series SLC/SLD.



Overview of devices | part numbers

Type	Description	Part no.	Std. pack
SLX-COL-0900	Device column, profile height: 820 mm; Total height: 900 mm	R1.593.0900.0	1
SLX-COL-1000	Device column, profile height: 980 mm; Total height: 1060 mm	R1.593.1000.0	1
SLX-COL-1300	Device column, profile height: 1280 mm; Total height: 1360 mm	R1.593.1300.0	1
SLX-COL-1600	Device column, profile height: 1580 mm; Total height: 1660 mm	R1.593.1600.0	1
SLX-COL-1900	Device column, profile height: 1880 mm; Total height: 1960 mm	R1.593.1900.0	1
SLX-COL-BASE	Replacement pedestal for columns with spring elements	R1.593.0001.0	1
SLX-COLP-0900	2 Protective glasses for SLC-COL-Device column; Length: 820 mm	R1.592.0900.0	1
SLX-COLP-1000	2 Protective glasses for SLX-COL-Device column; Length: 980 mm	R1.592.1000.0	1
SLX-COLP-1300	2 Protective glasses for SLX-COL-Device column; Length: 1280 mm	R1.592.1300.0	1
SLX-COLP-1600	2 Protective glasses for SLX-COL-Device column; Length: 1580 mm	R1.592.1600.0	1
SLX-COLP-1900	2 Protective glasses for SLX-COL-Device column; Length: 1880 mm	R1.592.1900.0	1

Other accessories – Series SLD/SLC



SLX-ACC-LASER



SLC-ACC-LASERCOL

The external laser-alignment device **SLX-ACC-LASER** (for direct mounting on series SLX/SLD) and **SLX-ACC-LASERCOL** (for mounting on a device column SLX-COL) are used for the adjustment of the optical system of series SLC/SLD.

The test rods **SLX-ACC-TEST** are used for functional testing of protective areas realized by series SLC.



SLX-ACC-TEST

Overview of devices | part numbers

Type	Description	Part no.	Std. pack
SLX-ACC-LASERCOL	External laser adjustment device, for fixing in Device column	R1.596.0003.0	1
SLX-ACC-LASER	External laser adjustment device	R1.596.0002.0	1
SLX-ACC-TEST2040	Test bar, 20/40 mm	R1.596.2040.0	1
SLX-ACC-TEST1430	Test bar, 14/30 mm	R1.596.1430.0	1
SLX-ACC-MKEY	Magnet Key for activation of laser adjustment device	R1.596.0001.0	1

Muting accessories – Series SLC/SLD



The muting-Set **SLX-MUTC-SET2P** is used for realizing a 2-sensor cross muting e.g. in combination with device columns SLX-COL (to be ordered separately).

The Muting-Set **SLX-MUTC-SET4** (no figure) is used for realizing a 4-sensor-sequence-muting, e.g. in combination with device columns SLX-COL (to be ordered separately).

Overview of devices | part numbers

Type	Description	Part no.	Std. pack
SLX-MUTC-SET2P	SLX-muting-sensor-set (device column) for 2-sensor-parallel-muting, incl. 2 sensor units, 2 reflector units, pre-assembled, distance 8 m	R1.597.0008.0	1
SLX-MUTC-SET4	SLX-muting-sensor-set for 4-sensor-sequential-muting, incl. 4 sensor units, 4 reflector units, pre-assembled, distance 8 m	R1.597.0007.0	1
SLX-MUT-SENS20	Sensor element, 2 m cable	R1.597.0012.0	1
SLX-MUT-SENS07	Sensor element, 0.7 m cable	R1.597.0013.0	1
SLX-MUT-SENS04	Sensor element, 0.4 m cable	R1.597.0014.0	1
SLX-MUT-REFLEX	Reflector	R1.597.0015.0	1

Further muting accessories are available on request.



wieland

Headquarters:
 Wieland Electric GmbH
 Brennerstraße 10 – 14
 96052 Bamberg, Germany

Sales Center:
 Wieland Electric GmbH
 Benzstraße 9
 96052 Bamberg, Germany

Phone +49 951 9324-0
 Fax +49 951 9324-198
 www.wieland-electric.com
 info@wieland-electric.com

Technical support:
 Phone +49 951 9324-999
 Fax +49 951 9326-991
 safety@wieland-electric.com

Our subsidiaries



USA
Wieland Electric Inc.
North American Headquarters
 2889 Brighton Road
 Oakville, Ontario L6H 6C9
 Phone +1 905 8298414
 Fax +1 905 829 413
 www.wielandinc.com



CANADA
Wieland Electric Inc.
North American Headquarters
 2889 Brighton Road
 Oakville, Ontario L6H 6C9
 Phone +1 905 8298414
 Fax +1 905 829 413
 www.wieland-electric.ca



GREAT BRITAIN
Wieland Electric Ltd.
 Riverside Business Centre,
 Walnut Tree Close
 GB Guildford/Surrey GU1 4UG
 Phone +44 1483 531213
 Fax +44 1483 505029
 sales.uk@wieland-electric.com



FRANCE
Wieland Electric SARL.
 Le Céramê Hall 6
 47, avenue des Genottes
 CS 48313,
 95803 Cergy-Pontoise Cedex
 Phone +33 1 30320707
 Fax +33 1 30320717
 info.adv@wieland-electric.com



SPAIN
Wieland Electric S.L.
 C/ Maria Auxiliadora 2 bajos
 E-08017 Barcelona
 Phone +34 93 2523820
 Fax +34 93 2523825
 ventas@wieland-electric.com



ITALY
Wieland Electric S.r.l.
 Via Edison, 209
 I-20019 Settimo Milanese
 Phone +39 02 48 916357
 Fax +39 02 48 920685
 info.italy@wieland-electric.com



POLAND
Wieland Electric Sp. Zo.o.
 Św. Antoniego 8
 62-080 Swadzim
 Phone +48 61 2225400
 Fax +48 61 8407166
 office@wieland-electric.pl



CHINA
Wieland Electric Trading
 Unit 2703 International
 Soho City 889 Renmin Road
 Huang Pu District
 PRC-Shanghai 200010
 Phone +86 21 63555833
 Fax +86 21 63550090
 info-shanghai@wieland-electric.com



DENMARK
Wieland Electric A/S
 Vallørækken 26
 DK-4600 Køge
 Phone +45 70 266635
 Fax +45 70 266637
 sales.denmark@wieland-electric.com



BELGIUM
AEM – Wieland Electric NV
 Bedrijvenpark De Veert 4
 B-2830 Willebroek
 Phone +32 3 8661800
 Fax +32 3 8661828
 info.belgium@wieland-electric.com

Agencies:
 You can reach us worldwide in more than
40 countries.
 Find the contact address at:
 www.wieland-electric.com



Informational brochures for
 downloading from our website

For technical details use our
 eCatalog on our website at
<https://eshop.wieland-electric.com>

Subject to technical modifications!
gesis[®], **podis**[®], **samos**[®] are registered
 trademarks of Wieland Electric GmbH

contacts are green.

Wieland worldwide