

Headquarters:  
Wieland Electric GmbH  
Brennerstraße 10 – 14  
D-96052 Bamberg

Sales and Marketing Center:  
Wieland Electric GmbH  
Benzstraße 9  
D-96052 Bamberg

Phone +49 951 9324-0  
Fax +49 951 9324-198  
www.wieland-electric.com  
www.gesis.com  
www.gesis-network.com  
info@wieland-electric.com

**Industrial technology**

Solutions for the control cabinet

- DIN rail terminal blocks
  - Screw, spring clamp or IDC connection technology
  - Wire cross sections up to 240 mm<sup>2</sup>
  - Numerous special functions
  - Software solutions interfacing to CAE systems
- Safety
  - Safety sensors
  - Safety relays
  - Modular safety systems with fieldbus link
- PLC and fieldbus components
  - Standard applications in IP 20
  - Increased environmental conditions with railroad and ship approvals
- Interface
  - Coupling relays, semiconductor switches
  - Measuring and monitoring relays
  - Timer and switching relays
  - Analog modules
  - Passive interfaces
  - Power supply units
  - Overvoltage protection

Solutions for field applications

- Remote automation technology
  - Power distribution
  - Fieldbus interfaces and motor starters
- Connectors for industrial applications
  - Square and round connectors
  - Aluminum or plastic housings
  - Degree of protection up to IP 68
  - Current-carrying capacity up to 100 A
  - Connectors for hazardous areas
  - Modular, application specific technology

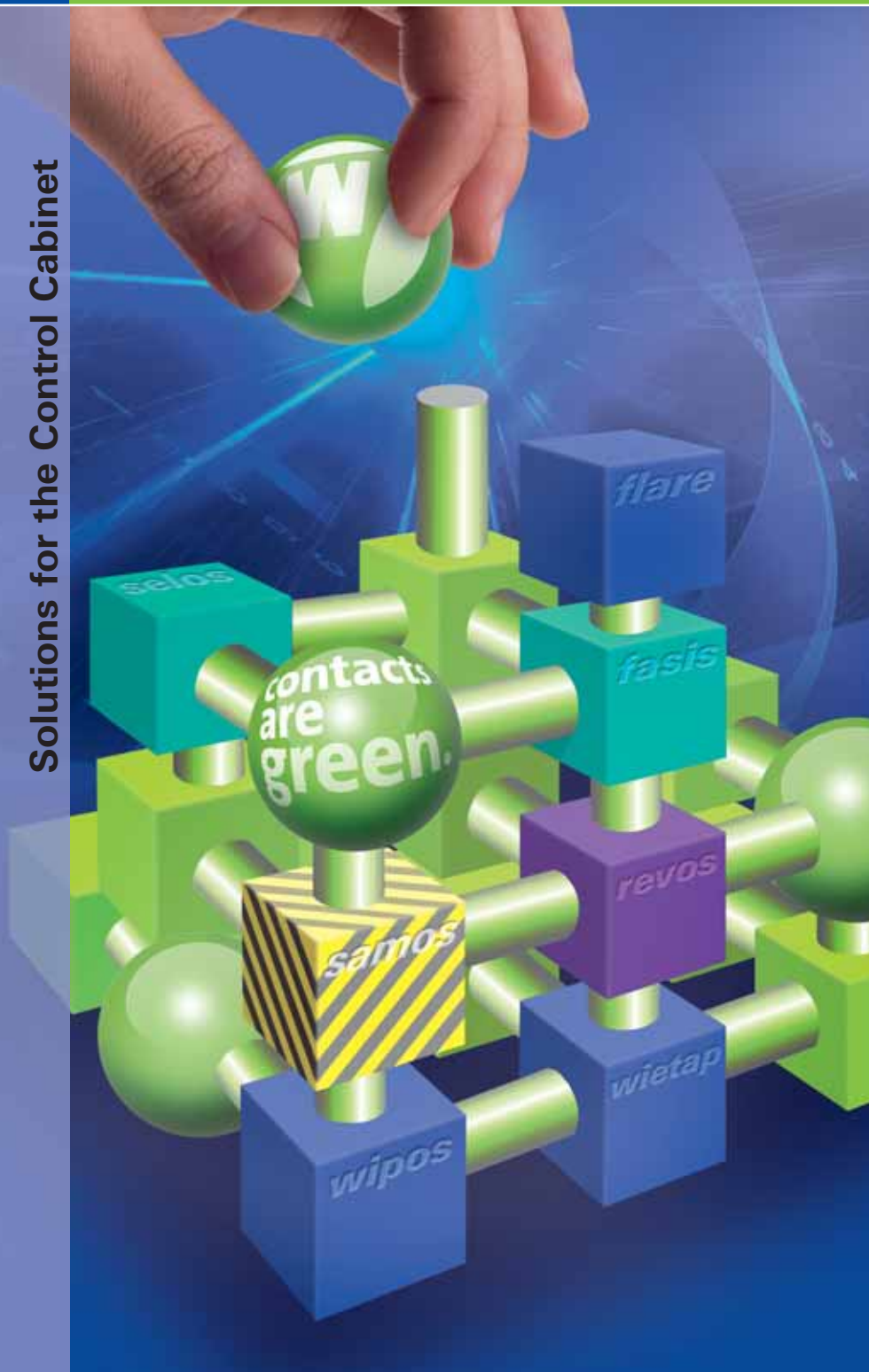
PC board terminals and connectors

- Screw or spring clamp connection technology
- Spacings: 3.5 mm to 10.16 mm
- Reflow or wave soldering process

**Building and installation technology**

- Building installation systems
  - Main power supply connectors IP 20/IP 65... IP 68
  - Bus connectors
  - Combined connectors
  - Low-voltage connectors
  - Power distribution system with flat cables
  - Distribution systems
  - Bus systems in KNX, LON and radio technology
  - DIN rail terminal blocks for electrical installations
  - Overvoltage protection

Solutions for the Control Cabinet



**Electro-technical  
Solutions for the  
Control Cabinet**

**contacts  
are  
green.**

**Product Range**

0401.1 C 10/09

**Always Well Matched**



**Active worldwide**

With its staff of almost 2,000 employees, the Wieland Group is at home on all continents. Subsidiaries in Great Britain, France, Spain, Italy, Poland, Canada, the USA and also in China speak for themselves. With a great number of representatives, Wieland Holding is active in almost all strategically important countries. Just a medium-size global player with a clear commitment to the German location where most of the products are still manufactured.

**contacts  
are  
green.**



▲ Photo of the Bamberg headquarters

◀ Sales and Marketing Center in Bamberg



# The Wieland Group

## Competence and know-how

### One company group, a thousand opportunities

The philosophy of the Wieland Group with its headquarters in Bamberg can be summarized that simply. The independent subsidiaries, Wieland Electric and STOCKO Contact, are active beneath Wieland Holding.

Together they cover an extraordinarily wide product portfolio in the field of electrical engineering and electronics. It comprises control cabinet engineering, industrial multipole connectors as well as overvoltage technology and building system technology.

Wieland Electric is active in most areas of automation technology and delivers as the industry's driver for innovation. Safety first – Wieland Electric is ideally positioned with its modular system solutions such as **Series 4000, samos<sup>®</sup>, samos<sup>®</sup>PRO** and the new **sensor** safety sensors. **podis<sup>®</sup>**, the solution-oriented system for remote power distribution, and **ricos<sup>TR</sup>**, the latest development in the field of automation systems for heavy duty industrial requirements, are only two examples.

In the building installation system sector, Wieland Electric, with its **gesis<sup>®</sup>** system, is the world market leader in pluggable electrical installation. With good reason do planners and architects of the tallest and most interesting construction projects worldwide, such as the Petronas Towers in Kuala Lumpur, rely on **gesis<sup>®</sup>** components from Wieland. Wieland is the pioneer on a path toward the intelligent home by consistently developing its **gesis<sup>®</sup>** product range, especially with regards to the demands of electronic networking.

Wieland Electric was founded in 1910 in Bamberg. With 1350 staff members it is the largest subsidiary within the company group of Wieland Holding. With its numerous innovations, Wieland Electric has become a major supplier of electrical connection technology. Export share is currently at 58%.

STOCKO Contact is located in North Rhine-Westphalia's Wuppertal and has been a member of the Wieland Group since 2001. The company can look back at a history of more than 100 years. STOCKO Contact is one of the biggest European manufacturers of connector systems and crimp contacts.

### Almost 100 years young and full of innovative energy...

this is the foundation of our company philosophy.

From this statement Wieland Electric will not just maintain, but expand its social responsibility into the future. Eco-friendly high-tech products, manufactured according to state-of-the-art production standards, an audited environmental management system and extensive investments in our facilities with cutting-edge environmental technologies are a matter of fact. A company policy that also commits us to the long term responsibility for the future of our families and children, as well as for the city of Bamberg, in addition to innovative system solutions for our customers.

In our opinion, worldwide action and regional responsibility are united.



◀ STOCKO headquarters  
in Wuppertal



# Control Cabinet Solutions for all Industries

Building synergy is our strength



Elevators and escalators



Cranes and construction machinery



Industrial systems



**Packaging machines**



**Machine tools**



**Building automation**



**Power generation  
and distribution**





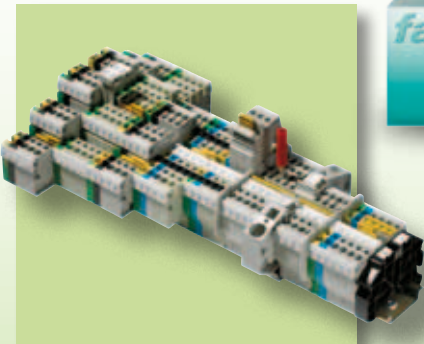
## Keeping Packaging Machines Running Production safety in real time



Modularity is the core concept of modern packaging machines. Due to the structured design of a complex system made up of individual function modules, systems can be tailored to the customers' requirements. This will not only increase flexibility with respect to the customer, but will also reduce the costs of design and save time during commissioning.

Pluggable installation with **revos** guarantees the quick and reliable connection of modular systems.



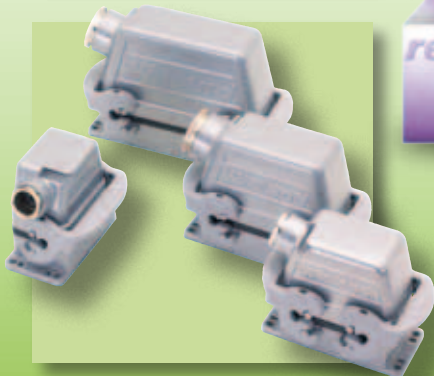


## Power supply and distribution

DIN rail terminal blocks from the **fasis** product series are easy to handle, save time and reduce the cost of wiring and inventory; they guarantee vibration-proof and maintenance-free terminations with specific contact forces. A real alternative to the screw.

### **fasis** DIN rail terminal blocks with spring clamp terminations and plug-in connections

Rated cross section up to	35 mm <sup>2</sup>
Rated current up to	125 A
Rated voltage up to	1,000 V
Flammability class	UL-V0



## Pluggable systems installation

**revos**: Industrial multipole connectors are specially designed for applications in extremely rough environments. They simplify the installation of machines and industrial systems and help to save time. Their housings protect against mechanical stress and prevent the ingress of splashing water or dust.

### **revos** industrial multipole connectors

Rated current up to	100 A
Rated voltage up to	1,000 V
Rated cross section up to	25 mm <sup>2</sup>
Wiring technique	Screw, spring clamp and crimp technology



## Safety in series

Reliable and innovative solutions provide maximum quality and safety without impairing the system's productivity and availability.

### **Safety for applications**

Sensors	SMA magnetic switch, SNM emergency stop button
Series 4000	Safety switching devices for all applications
<b>samos</b>	Modular safety control Parameterization with a screwdriver
<b>samos</b> PRO	Compact safety control



## Reliable power for control systems

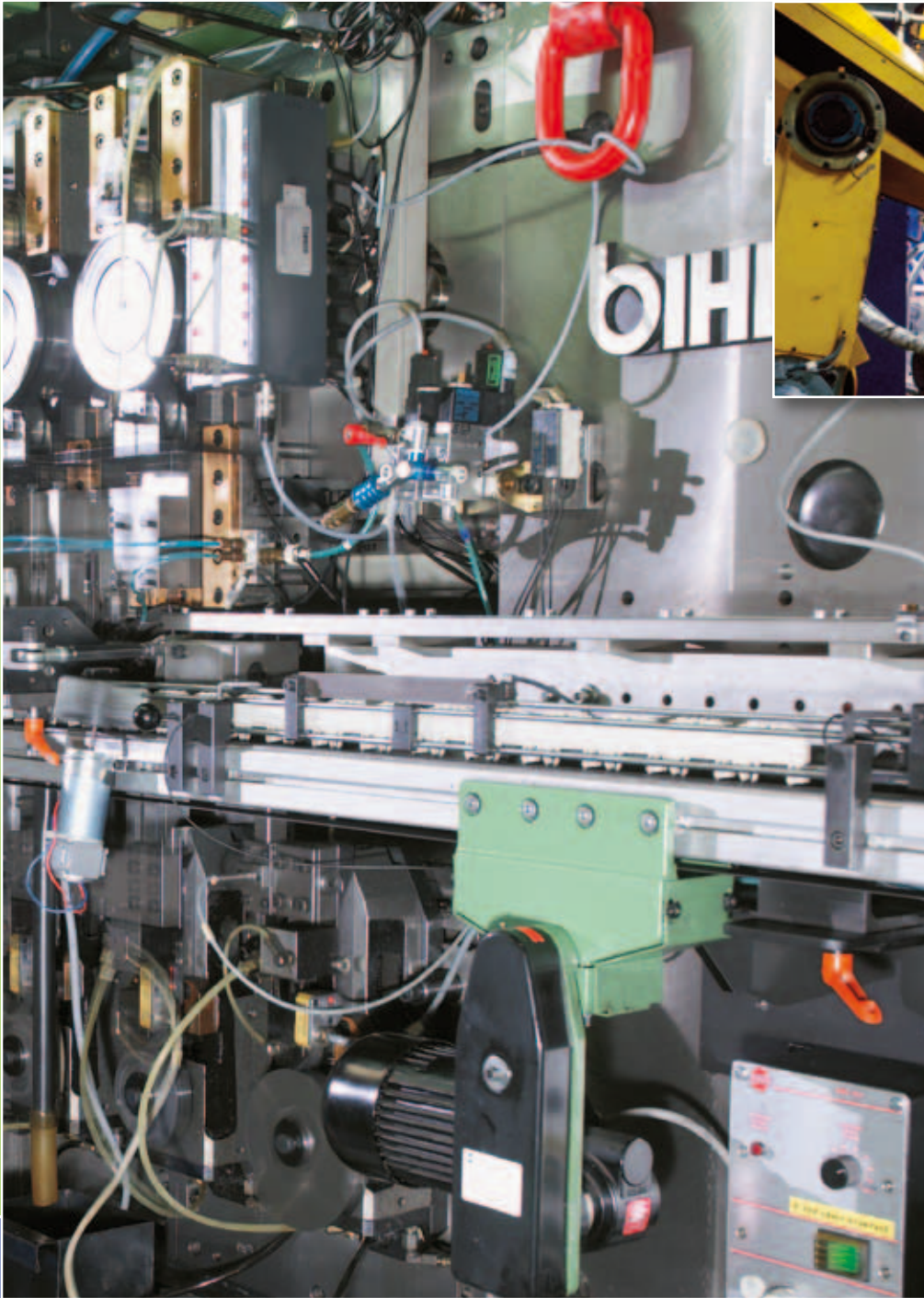
The **wipos** series includes power supply units which play a major role inside the control cabinet. Their reliability has a great impact on the operational availability of the machine and therefore the process. Consequently a robust power supply with a proven design is essential.

### **wipos** switch-mode power supply unit

Number of phases	1 to 3 phase
Rated current	1.25 ... 40 A
Power	100% up to +60 °C
Temperature range	-25 ... +70 °C
Connection style	Daisy chaining or parallel connection possible
Power Factor Correction (PFC) technology	yes



## Quality for Machine Tools Resource protection

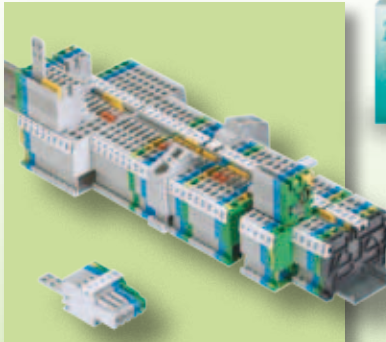


Machine tools are specialized pieces of equipment that fabricate metal components. They include metal cutting and separating machines. Personnel safety during operation and maintenance is given top priority in such machining processes. Wieland **safety** comprises a portfolio of safety components which make a significant contribution to safety of man and machine.

Technology from Wieland protects man and machine, monitors processes and helps to avoid errors. Regardless whether you are looking for an individual component or a complete system: in our product range you will find the tailor-made solution.





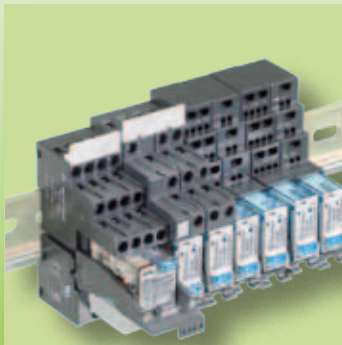


## Pluggable system installation

plug & play inside the control cabinet. **fasis** CON is a DIN rail terminal block system with pluggable output. Pluggable connections result in time savings and cost reductions during installation, commissioning and servicing. Quick and error-free installation is guaranteed using factory built terminal block assemblies and pluggable wire harnesses.

### **fasis** DIN rail terminal blocks with spring clamp terminations and plug-in connections

Wire range	4.0 mm <sup>2</sup>
Rated current up to	32 A
Rated voltage	500 V
Width	only 5 mm
System	Can be combined with <b>fasis</b> WKFN
Accessories	See <b>fasis</b>



## Switching and coupling signals

The mechanical **flare** relays are available in various designs, and are used for switching and decoupling of loads. They switch and amplify digital signals in automation technology and are used for electric isolation between the control and load circuits.

### **flare** relays

Rated current	0.02 ... 16 A
Contacts	1 normally open contact, 4 change-over contacts
Wiring technique	Screw and spring clamp technology
Temperature range	-40 ... +70 °C
Design	Relays, pluggable or enclosed
Approvals	UL, CSA, railway approval, GS



## Safety in series

Reliable and innovative solutions provide maximum quality and safety without impairing the system's productivity and availability.

### **Safety for applications**

Sensors	SMA magnetic switch, SNM emergency stop button
Series 4000	Safety switching devices for all applications
<b>samos</b>	Modular safety control Parameterization with a screwdriver
<b>samos</b> PRO	Compact safety control



## Reliable power for control systems

The **wipos** series includes power supply units which play a major role inside the control cabinet. Their reliability has a great impact on the operational availability of the machine and therefore the process. Consequently a robust power supply with a proven design is essential.

### **wipos** switch-mode power supply unit

Number of phases	1 to 3 phase
Rated current	1.25 ... 40 A
Power	100% up to +60 °C
Temperature range	-25 ... +70 °C
Connection style	Daisy chaining or parallel connection possible
Power Factor Correction (PFC) technology	yes

## Power Distribution in Building Automation The core of supply

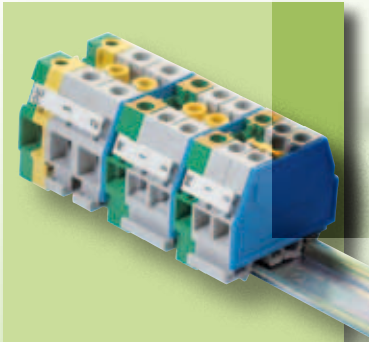


The demands of cutting edge building automation are ever increasing, and the requirements of the control systems rise with them. Overvoltages can lead to failures in these control systems.

Electrical installation in building automation requires safe, maintenance-free, and long lasting termination technology. Additionally, it must be possible to easily expand and modify the facility's switchgear. The DIN rail terminal blocks of the BIT series as well as the surge protection system *wietap* are perfect for the requirements of the control cabinets of the building automation system.





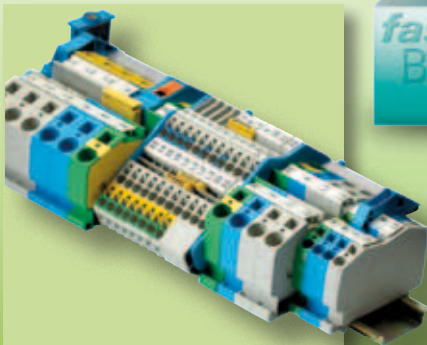


## Power feed-in

**selos** *wki* – Installation blocks with screw termination. A feature most important in the feed-in, and for the connection of larger cross sections, the side wire entry of the screw termination offers superior handling during termination and wire routing.

### **selos** DIN rail terminal blocks

Wire range up to	50 mm <sup>2</sup>
Height	For small and field distribution units with covers
Terminal block	Three-tier installation blocks up to 4.0 mm <sup>2</sup>
System	Can be combined with <b>fasis</b> <i>wki</i>



## Power distribution

**fasis** *wki* – Installation blocks with spring clamp terminations and plug-in connections for distribution cabinet wiring in public buildings in accordance with DIN VDE 0100 or DIN VDE 0108.

### **fasis** DIN rail terminal blocks with with spring clamp terminations and plug-in connections

Wire range up to	16 mm <sup>2</sup>
Terminal block	Neutral disconnect blocks up to 16 mm <sup>2</sup> Three-tier installation blocks with tension spring and direct connection
Height	For small and field distribution units with covers

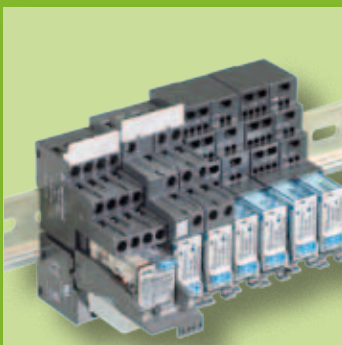


## Surge protection

**wietap** systems are surge protection devices for voltage and signal interference; they protect electrical and electronic systems against high-power overvoltage (caused for example by lightning strikes).

### **wietap** surge protection

Discharge capacity up to	100 kA, type 1 to 3
Modules	Pluggable, vibration-proof and shock-proof in accordance with EN 60968-2
System	for all networks which are energy coordinated
Function/fault display	According to VDE 0100-534 for each path
Fuse protection	Through follow current limitation
Temperature range	-40 ... +80 °C



## Switching and coupling signals

The mechanical **flare** relays are available in various designs, and are used for switching and decoupling of loads. They switch and amplify digital signals in automation technology and are used for electric isolation between the control and load circuits.

### **flare** relays

Rated current	0.02 ... 16 A
Contacts	1 normally open contact, 4 change-over contacts
Wiring technique	Screw and spring clamp technology
Temperature range	-40 ... +70 °C
Design	Relays, pluggable or enclosed
Approvals	UL, CSA, railway approval, GS

## Mastering Power Engineering High loads included

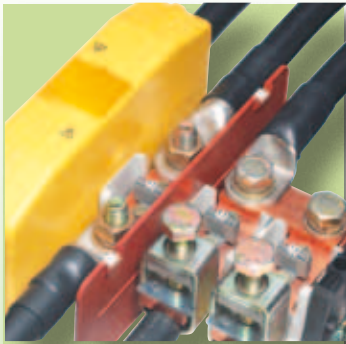


Power engineering means power generation and power distribution. Reliability in the area of electrical connection technology is required. Whether in wind turbines or in the power distribution network – even minor defects may cause failures which almost always result in significant corrective action and costs.

**selos** stands for screw termination DIN rail terminal blocks with industry proven reliability. In addition to standard connection components the portfolio also includes various measuring disconnect blocks which are tailored to the special requirements of the secondary circuits in current transformers.





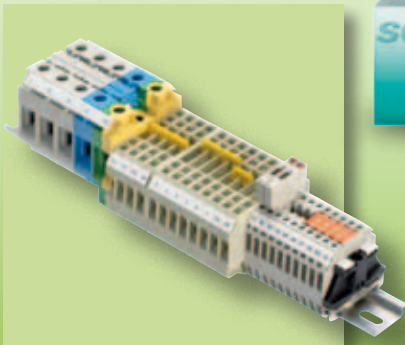


## Power feed-in

The DIN rail terminal blocks of **selos** POWER LINE have been designed particularly for applications in the high-current range. The proven screw connection is available as stud-type rising cage clamp or hybrid connection. With extensive accessories **selos** POWER can be optimally applied to various power distribution tasks.

### selos – DIN rail terminal blocks with screw connection

Rated cross section up to	240 mm <sup>2</sup>
Rated current up to	415 A
Rated voltage	1,000 V
Connection style	Stud-type connection, rising cage clamp connection, hybrid solutions

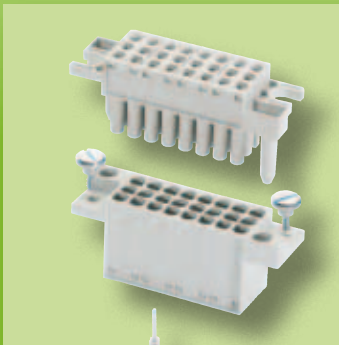


## Power distribution and measurement

The DIN rail terminal block with the classic screw connection: **selos** is solid and functional, known worldwide and has been used millions of times. The variety of different products provides solutions for applications of all kinds. Screw technology guarantees highest contact forces with low contact resistance.

### selos – DIN rail terminal blocks with screw connection

Rated cross section up to	240 mm <sup>2</sup>
Rated current up to	415 A
Rated voltage up to	1,000 V
Approvals	UL, CSA, ATEX
Terminals, industry-specific	Measuring disconnect blocks



## Pluggable system installation

**revos** SLIDE is a 24 pole connector for rack and panel applications requiring blind mate and float capabilities. The guide pins guarantee a secure and automatic mating of the connector for slide-in panel applications.

### revos industrial multipole connectors

Rated current	10 A
Rated voltage	250 V
Rated cross section	1.5 mm <sup>2</sup>



## Surge protection

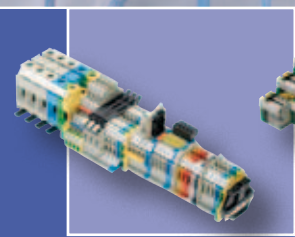
**wietap** systems are surge protection devices for voltage and signal interference; they protect electrical and electronic systems against high-power overvoltage (caused for example by lightning strikes).

### wietap surge protection

Discharge capacity up to	100 kA, type 1 to 3
Modules	Pluggable, vibration-proof and shock-proof in accordance with EN 60968-2
System	for all networks which are energy coordinated
Function/fault display	According to VDE 0100-534 for each path
Fuse protection	Through follow current limitation
Temperature range	-40 ... +80 °C

# Product Solutions for the Control Cabinet

Motion, safety, and strength







**Power supply and distribution**

16



**Pluggable system installation**

18



**Reliable power supply for controls**

20



**Overvoltage protection for machines**

22



**Switching and coupling signals**

24



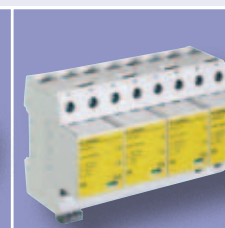
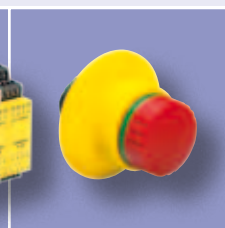
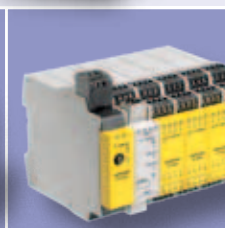
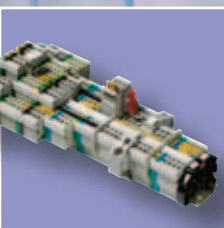
***safety* – for man and machine**

26



**Flexible module-to-module connection**

28







# Innovative DIN Rail Terminal Blocks

## Power supply and signal distribution



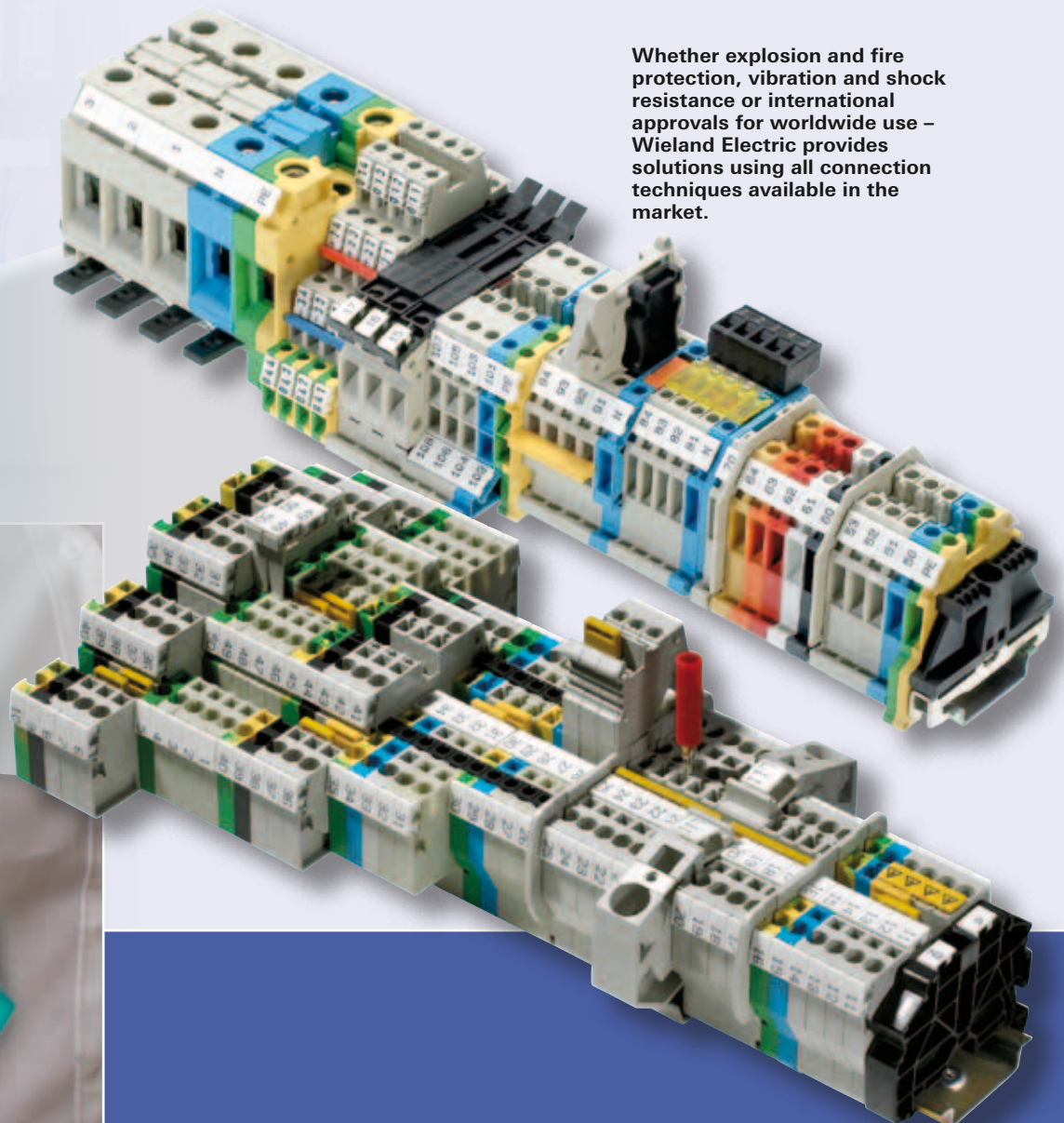
DIN rail terminal blocks are the standard connection component in all areas of electrical engineering. Whether in machinery or power supply applications, DIN rail terminal blocks are used for signal and power distribution as well as for the conventional electrical installation of buildings.

Due to their high mechanical strength and contact stability the DIN rail terminal blocks from Wieland are particularly suitable for our customers' requirements.

### DIN rail terminal block product lines from Wieland Electric for worldwide use:

- **fasis** – DIN rail terminal blocks with spring clamp and plug-in connection
- **selos** – DIN rail terminal blocks with screw connection
- **taris** – DIN rail terminal blocks with IDC connection

Whether explosion and fire protection, vibration and shock resistance or international approvals for worldwide use – Wieland Electric provides solutions using all connection techniques available in the market.









# Combined Model for Industry

## revos connections are reliable

The **revos** industrial multipole connectors are classified according to their housings, contact inserts and connection technology. A broad standard product spectrum as well as modular components that can be combined individually are available:

**A broad standard product range, as well as modular components that can be custom assembled, are available:**

- **revos** BASIC with 6 to 92 pole contact inserts
- **revos** POWER, high-current connectors for currents up to 100A
- **revos** HD, high-density connectors with up to 64 poles and up to 10A
- **revos** FLEX, a modular hybrid connector system for application specific solutions combining selectable contact inserts, for signal, pneumatic, and fiber optic connections.
- **revos** BASIC EMV, for applications where electromagnetic interference must be protected against both ingress and emission.



Industrial multipole connectors are specifically designed for applications in extremely rough environments.

**revos** handles even the toughest jobs, because the powder-coated aluminum housings protect against mechanical wear and prevent ingress of spray and splashing water, as well as dust.







## Reliable Power Supply

Pure power with no ifs, ands, or buts



Power supply units play a central role inside the control cabinet. Their reliability has a great impact on the operational availability of the machine and therefore the process.

Consequently it is essential that a power supply unit is robust and has a proven design. Our **wipos** series provide no-frills power supply units which get high marks for important features.

### **wipos** is convincing in the major features:

- 100% output at up to 60 °C
- Automatic or wide voltage input for worldwide use
- PFC technology for high functional reliability
- Outdoor installation is possible due to the large temperature range
- Active monitoring with switching output
- Parallel wiring at 5A for increased power and redundancy
- High operational safety due to long power buffering time > 30ms
- Voltage drop compensation due to adjustable output voltage
- Easy commissioning due to LED diagnostics



Power supply units are the heart of control cabinets, where components, according to their requirements, have different levels of performance.

Therefore, our product range includes single-phase to three-phase devices for DIN rail mounting in the performance classes from 1.25 A to 40 A DC for nearly all applications possible.







# Immunity from Overvoltage Protection for your systems



With its considerably expanded product range **wietap** for surge protection in control cabinets and sub-distribution units of machines or buildings, as well as for photovoltaic installations, Wieland Electric offers comprehensive solutions.

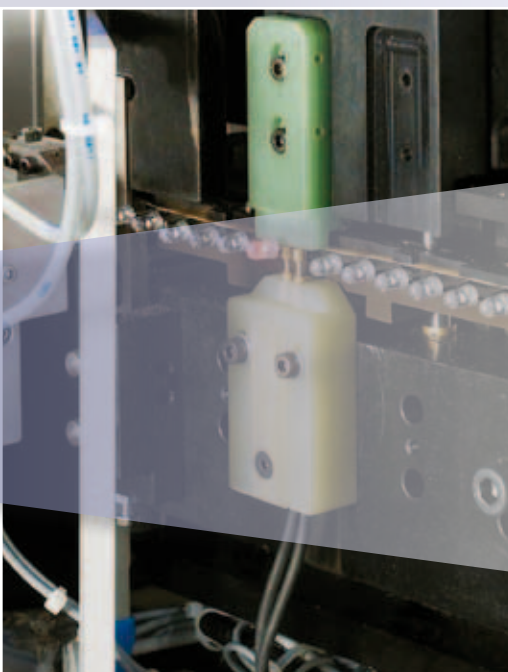
The modular DIN rail mount components include the ready to connect 3-phase Combi-Arrestor **wietap** VM for the main power supply, to the surge protection module **wietap** GM for sub-systems, as well as the **wietap** RM for control cabinets or machines.

All components are designed for operating temperatures between -40 and 80 °C and provide a high discharge capacity. They are optionally available with a remote signaling contact.

## Characteristics of **wietap**: Very short response time and high discharge capacity

- Electrically coordinated product families
- Highest discharge capacity up to 100 kA, type 1 to 3
- No tripping of fuses, therefore follow current limitation
- Pluggable protection modules with easy to release locking mechanism
- Vibration-proof and shock-proof in accordance with EN 60068-2
- Visual function/fault display for each circuit according to VDE 0100-534
- Protection modules are simple to remove and replace, no tool required
- Can be used upstream of the meter, too

**Surge protection devices protect electrical and electronic systems against high-power overvoltage (caused for example by lightning strikes).**







## To Serve and Protect Switching without disruption



In the chip age of bits and bytes people may assume that electromechanical relays have become irrelevant. Far from it!

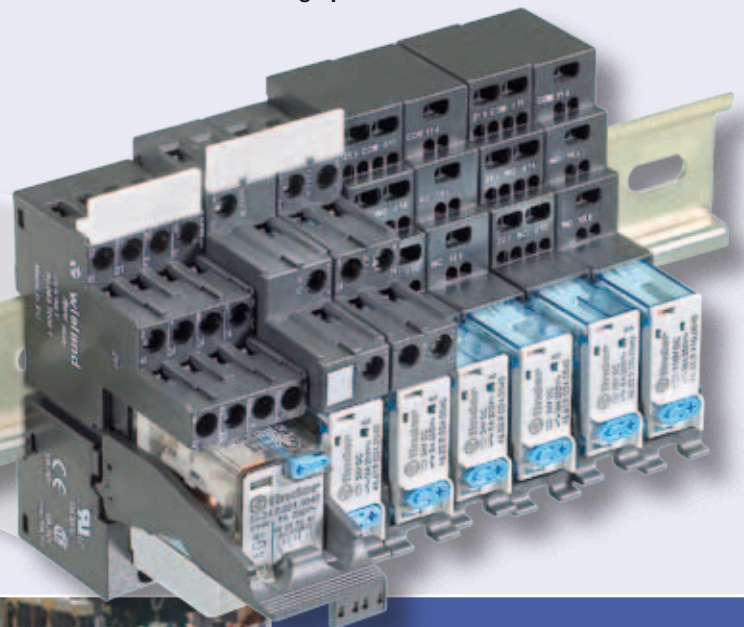
In control, traffic or production engineering, coupling relays have performed important tasks reliably for many years.

Combined with control systems they provide numerous options to make your application even more safe and less sensitive to disturbances.

### **flare coupling relay - the safe path for an application specific interface solution:**

- Safe electrical isolation
- Pluggable and compact solutions
- Mount securely onto 35 mm rails
- Optionally available with gold-plated contacts
- Both screw and spring clamp terminations
- Indication and EMC suppression modules available
- Also for railway applications according to EN 50155

**Interface relays provide electrical isolation and potential-free switching capabilities (and are pluggable to boot, ideal for high-maintenance applications). With a width starting at just 6.2 mm, they require only a minimum of mounting space.**







## User-Friendly

### Safety is a matter of trust



Nowadays, the requirements for systems and machines are high. However, in addition to the productivity and efficiency of a system or machine, ever increasing emphasis is placed on the safety of the process and its operators.

The design of modern facilities and machinery must also account for the safety of the personnel who will work with the machines or processes.

Reliable and innovative solutions are demanded, and must fulfill these important requirements without negatively impacting productivity, or availability of the system, or the means of transportation. With its

**SMA** and **SNH** series, its **Series 4000, samos®** and **samos® PRO** Wieland Electric provides top-quality safety components which contribute greatly to safety requirements during both the construction and operation of modern facilities and machinery.

An investment in **samos®** pays off even with only a minimum of safety circuits. And, as your safety requirements increase, you will be able to expand with the same safety system, because **samos®** is modular and flexible.

**It is even easy to parameterize the modules: You will not need any software; just set the desired safety functions directly on the device (and read them from there, too) using a screwdriver. A clear and simple solution. With samos PRO Wieland Electric also provides an alternative with a PC-programmable safety control, which leaves nothing to be desired.**









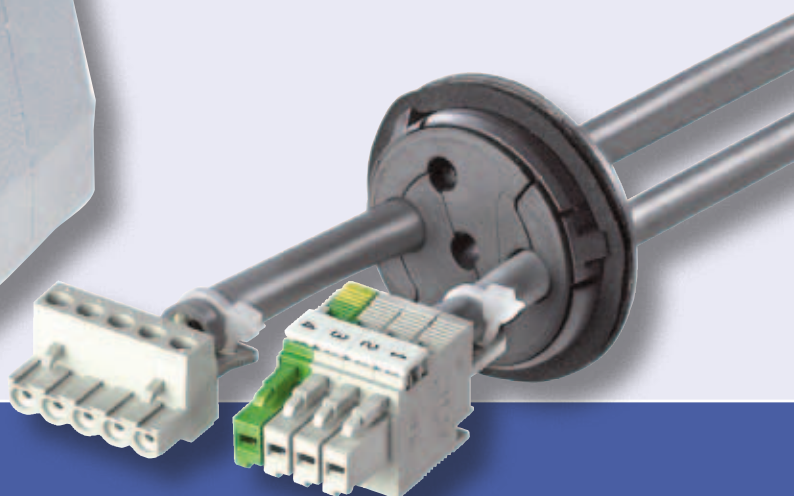
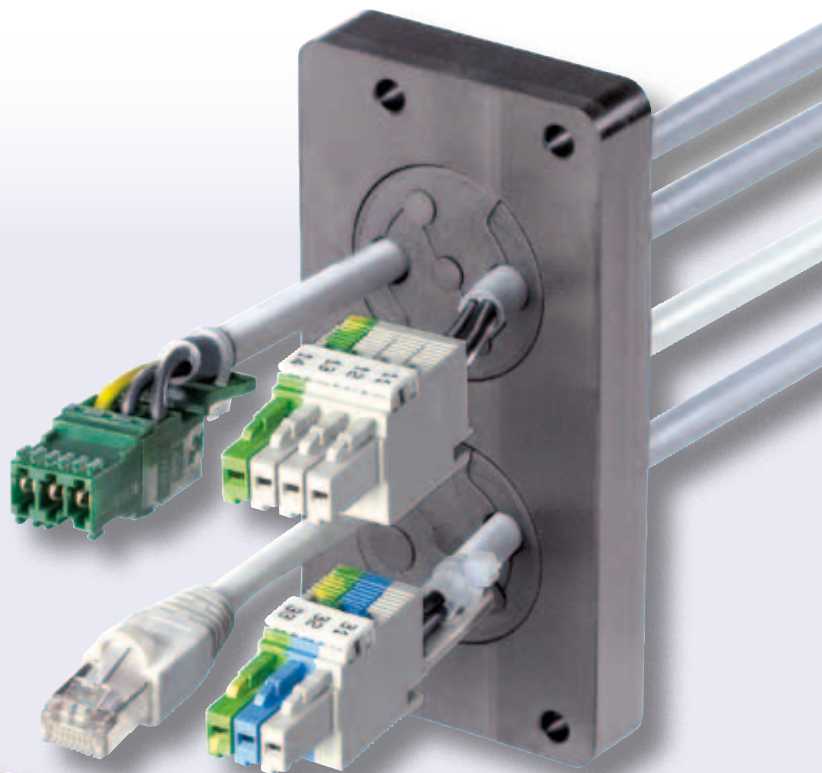
# Always the Proper Entrance

## Flexible from module to module

Cable feed-through modules from Wieland enable the quick and simple feed-through of network cables or any pre-assembled wire harnesses into the control cabinet. The cables are sealed using symmetrical grommets, which are seated into the housing frame entries, without any special tools. The entire system maintains a protection degree of IP 54.

Even data cable feed-throughs sometime require the protection of a heavy duty rectangular housing.

**revos IT** is the ideal solution. Pre-assembled cables can be passed through the panel, with water tight protection and strain relief.



## Trouble-Free Field Wiring

Solutions provided across the product range





## **gesis**<sup>®</sup> IP+

### **Round connectors for rough environments**

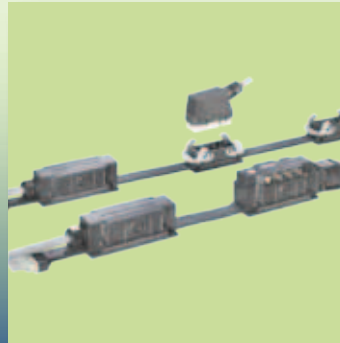
The successful **gesis** installation concept is now applied to rough environments, too. Whether in system technology, for outdoor lighting, on construction sites, in solar systems or in nonresidential buildings: **gesis** IP+ with IP65...IP68 protection withstands even the toughest conditions.



## **podis**<sup>®</sup>

### **Remote automation**

**podis** CON represents the family of passive components within the **podis** power bus system. The 7 pole flexible flat cable is the base upon which additional components are connected, without interruption, via insulation displacement terminations. **podis** CON includes all passive connectivity modules for both fixed and pluggable power drops.



## **gesis**<sup>®</sup>

### **Extensive building installation**

**gesis** – one name, one idea, an unparalleled success story! With its pluggable electrical installation system Wieland Electric has been the unchallenged market leader for 30 years. No wonder since time savings of 70 % and cost reductions of 30% continue to speak for themselves.



# Individual and Customized Ready for use





## Solution specific, value added assembly

### Terminal block assemblies

For those who want to make their control cabinet work easier Wieland Electric pre-assembles completely equipped DIN rail terminal block assemblies, even with the cables connected, if required.

### Cable assemblies

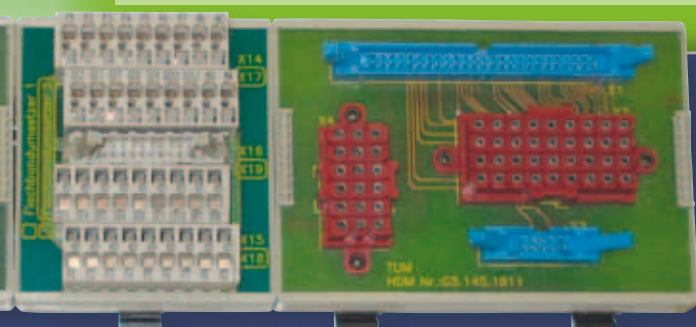
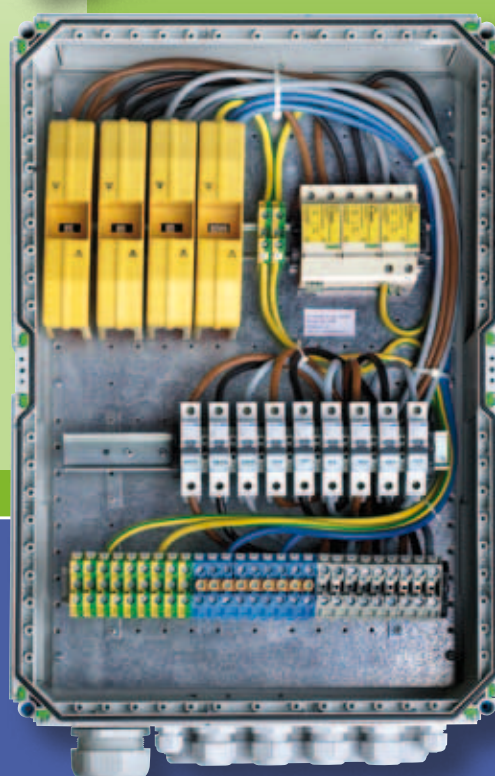
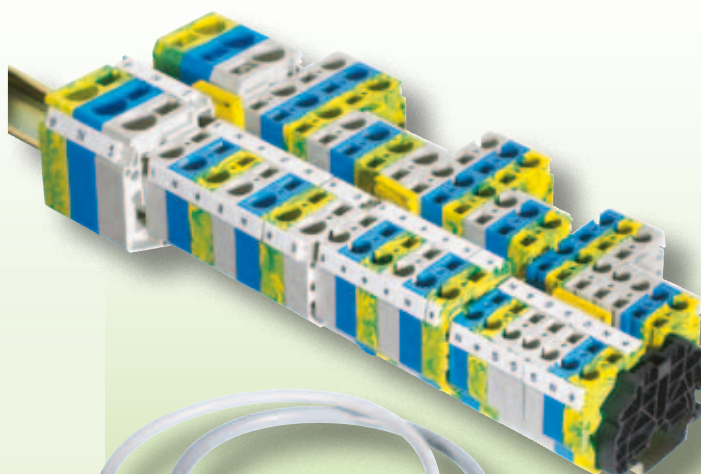
Individual cables tailored to your needs and combined with various components can be delivered for your project in all lengths.

### Control and distribution panels

Our value-add departments will gladly assist you in selecting individual Wieland components, or in laying out complete panels, which we can also build for you.

### Interface modules – solution specific connectivity

Each control cabinet requires distribution functionality. In most cases this is accomplished with standard control panel wiring (0.5mm or 1.5mm fine stranded with ferrule) to standardized interfaces (d-sub or ribbon cables). Upon the customer's request Wieland Electric can design individual and customized solutions for all applications, too.



# Control Cabinet Solutions from Wieland

## Additional information

### Hotline numbers in Sales:

Questions on availability, delivery date and prices will be answered by Sales at Phone: +49 951 9324-990

### Technical support:

For technical questions on product features and applications of our products as well as their functionality and accessories

### Automation technology:

- DIN rail terminal blocks **fasis, selos, taris**<sup>®</sup>  
Phone: +49 9 51 93 24-991
- Safety technology **safety**  
Phone: +49 9 51 93 24-999
- Remote I/O **ricos**  
Phone: +49 9 51 93 24-995
- Power supply, surge protection, measuring and monitoring relays, timer relays, coupling relays, analog modules, passive interfaces **interface**  
Phone: +49 9 51 93 24-995
- Remote power distribution **podis**<sup>®</sup>  
Phone: +49 9 51 93 24-998
- Industrial multipole connectors **revos**  
Phone: +49 9 51 93 24-997
- Appliance terminals, European terminal strips  
Phone: +49 9 51 93 24-993
- Housings for electronic components, PCB terminals and connectors **wiecon**  
Phone: +49 9 51 93 24-994

**Fax: +49 9 51 93 26-991**

**e-mail: AT.TS@wieland-electric.com**

### Building Automation Technology:

- System connectors for building installation  
**gesis**<sup>®</sup>, **gesis**<sup>®</sup> ELECTRONIC  
Phone: +49 9 51 93 24-996
- DIN rail terminal blocks **fasis**<sup>BIT</sup>, **selos**<sup>BIT</sup>  
Phone: +49 9 51 93 24-992

**Fax: +49 9 51 93 26-996**

**e-mail: BIT.TS@wieland-electric.com**

### General information and news:

**www.wieland-electric.com**

**Visit our e-catalog under**

**www.wieland-electric.com**

### Additional information on control cabinet solutions:

#### DIN rail terminal blocks

with screw connection	Part No. 0125.0
with tension spring clamp connection	Part No. 0124.0
for junction boxes	Part No. 0117.0

#### Interface

<b>safety</b> first catalog	Part No. 0156.0
and <b>safety</b> for all applications	Part No. 0152.0
	Part No. 0152.5

#### Industrial multipole connectors

<b>revos</b> 3 – 48 pole	Part No. 0078.6
--------------------------	-----------------

#### Information on pluggable installations:

##### for industry

<b>podis</b>	Part No. 0158.0 and 0158.2
--------------	----------------------------

##### for building installation

<b>gesis</b> <sup>CON</sup>	Part No. 0167.1 and 0161.9
<b>gesis</b> <sup>IP+</sup>	Part No. 0161.5

##### for solar technology

<b>gesis</b> <sup>SOLAR</sup>	Part No. 0162.3, 0162.4 and 0162.5
-------------------------------	------------------------------------





## Our subsidiaries

... and the addresses of our representations worldwide are available at:  
[www.wieland-electric.com](http://www.wieland-electric.com)



### USA

**Wieland Electric Inc.**  
 49 International Road  
 Burgaw, N.C. 28425  
 Phone +1-910-259 5050  
 Fax +1-910-259 3691



### CANADA

**Wieland Electric Inc.**  
 2889 Brighton Road  
 Oakville, Ontario L6H 6C9  
 Phone +1-905-829 8414  
 Fax +1-905-829 8413



### GREAT BRITAIN

**Wieland Electric Ltd.**  
 Riverside Business Centre,  
 Walnut Tree Close  
 GB-Guildford /  
 Surrey GU1 4UG  
 Phone + 44 (1483) 531 213  
 Fax + 44 (1483) 505 029



### FRANCE

**Wieland Electric SARL.**  
 103, Chemin de Ronde  
 F-78290 Croissy-sur-Seine  
 Phone +33-1-30 15 07 07  
 Fax +33-1-30 15 07 14



### SPAIN

**Wieland Electric S.L.**  
 C/ Maria Auxiliadora 2 bajos  
 E-08017 Barcelona  
 Phone +34-93-252 3820  
 Fax +34-93-252 3825



### ITALY

**Wieland Electric S.r.l.**  
 Via Edison, 209  
 I-20019 Settimo Milanese  
 Phone +39-02-48 91 63 57  
 Fax +39-02-48 92 06 85



### POLAND

**Wieland Electric Sp. Zo.o.**  
 Poznań Swadzim  
 ul. Św. Antoniego 8  
 62-080 Tarnowo Podgórze  
 Phone +48 61 84 09-101  
 Fax +48 61 84 07-166



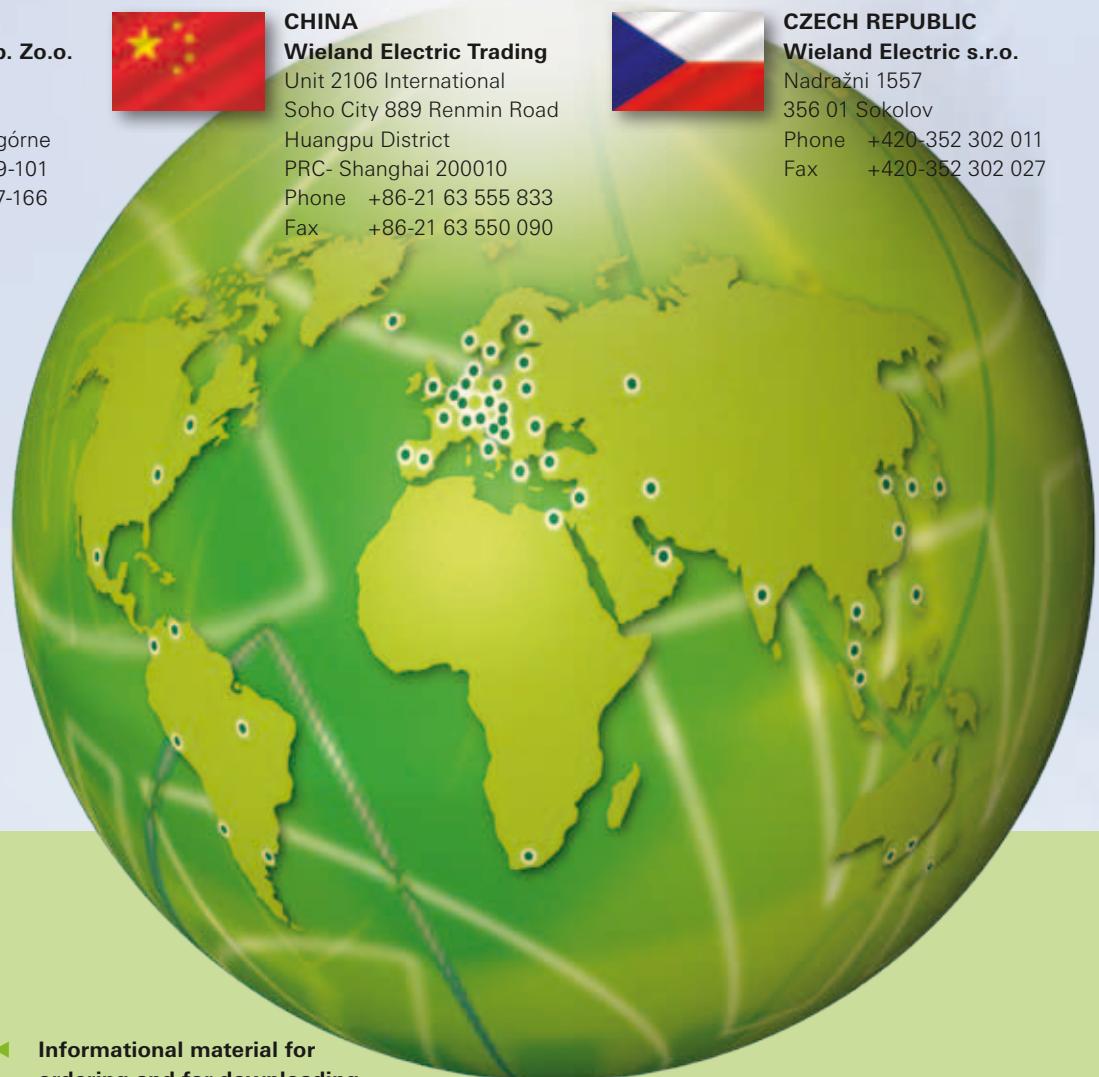
### CHINA

**Wieland Electric Trading**  
 Unit 2106 International  
 Soho City 889 Renmin Road  
 Huangpu District  
 PRC- Shanghai 200010  
 Phone +86-21 63 555 833  
 Fax +86-21 63 550 090



### CZECH REPUBLIC

**Wieland Electric s.r.o.**  
 Ndražni 1557  
 356 01 Sokolov  
 Phone +420-352 302 011  
 Fax +420-352 302 027



◀ Informational material for  
 ordering and for downloading  
 from our websites

Subject to technical modifications!

**gesis**®, **podis**®, **samos**®, **taris**® are registered trademarks of Wieland Electric GmbH