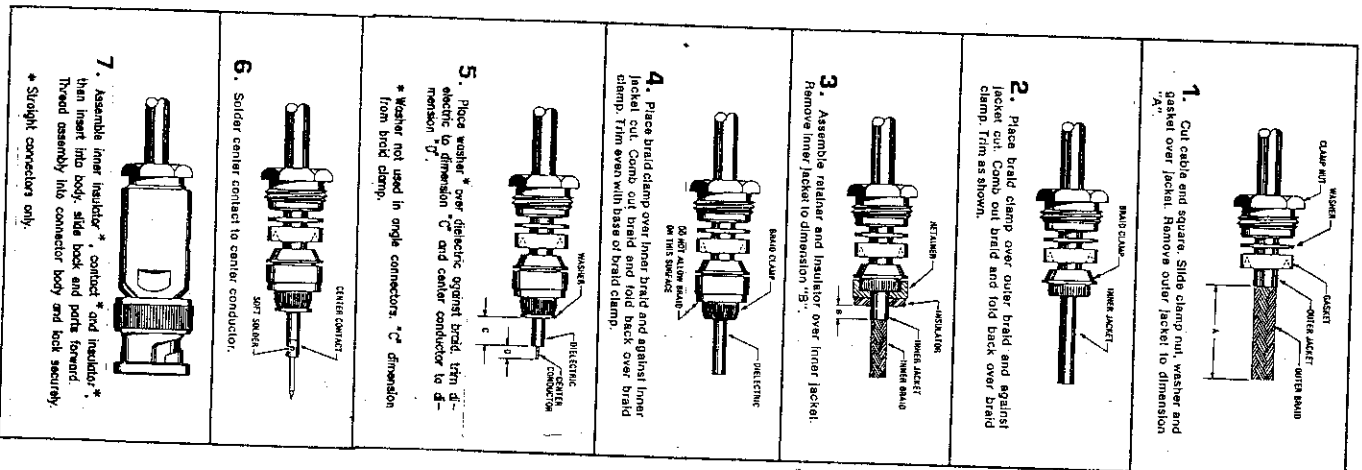


# CABLING PROCEDURE

SIKINGS

CP-1300

MASTER



TRIM CODE CHART

CODE	A				B				C				D			
	IN.	MM	IN.	MM	IN.	MM	IN.	MM	IN.	MM	IN.	MM	IN.	MM	IN.	MM
1301	.69	17.53	.096	2.43	.210	5.33	.094	2.39								
1302	.63	17.53	.125	3.18	.214	5.43	.080	2.03								
1303	.69	17.53	.096	2.43	.166	4.22	.141	3.58								
1305	.69	17.53	.096	2.43	.102	2.59	.094	2.39								
1306	.68	17.53	.096	2.43	.243	6.17	.110	2.82								

1/124/92  
MJB

CP-1300 CABLING INSTRUCTIONS

MASTER LIST

CP CODE	A	B	C	D
1301	,69	,096	,210	,094
1302	,69	,125	,214	,080
1303	,69	,096	,166	,141
1304				
1305	,69	,096	,102	,094
1306	,69	,096	,243	,110

CABLING PROCEDURE 1300

1. CUT CABLE END SQUARE, PLACE CLAMP NUT, WASHER AND GASKET OVER JACKET. REMOVE OUTER JACKET TO DIMENSION "A".
2. PLACE BRAID CLAMP OVER OUTER BRAID AGAINST JACKET CUT. COMB OUT BRAID AND FOLD BACK OVER BRAID CLAMP, TRIM IN USUAL MANNER.
3. ASSEMBLE RETAINER AND INSULATOR OVER INNER JACKET. REMOVE INNER JACKET TO DIMENSION "B".
4. PLACE BRAID CLAMP OVER INNER BRAID AGAINST INNER JACKET CUT. COMB OUT BRAID AND FOLD BACK OVER BRAID CLAMP, TRIM EVEN WITH BASE OF BRAID CLAMP.
5. PLACE WASHER OVER DIELECTRIC AGAINST BRAID AND TRIM DIELECTRIC TO DIMENSION "C" AND CENTER CONDUCTOR TO DIMENSION "D".
6. SOLDER CENTER CONTACT TO CENTER CONDUCTOR.
7. ASSEMBLE INNER INSULATOR, CONTACT AND OUTER INSULATOR, THEN INSERT INTO BODY. SLIDE BACK END PARTS FORWARD, THREAD ASSEMBLY INTO CONNECTOR BODY AND LOCK SECURELY.

CODE	A	B	C	D
1301	11/16	.096	.210	3/32
1302	11/16	.125	.214	.080
1303	11/16	.096	.160	.144

1966-5  
R.B.W. 1-5-78  
1955-1-9  
1995-3-9

**KINGS ELECTRONICS CO., INC.**  
40 MARBLEDALE ROAD  
TUCKAHOE, NEW YORK 10707

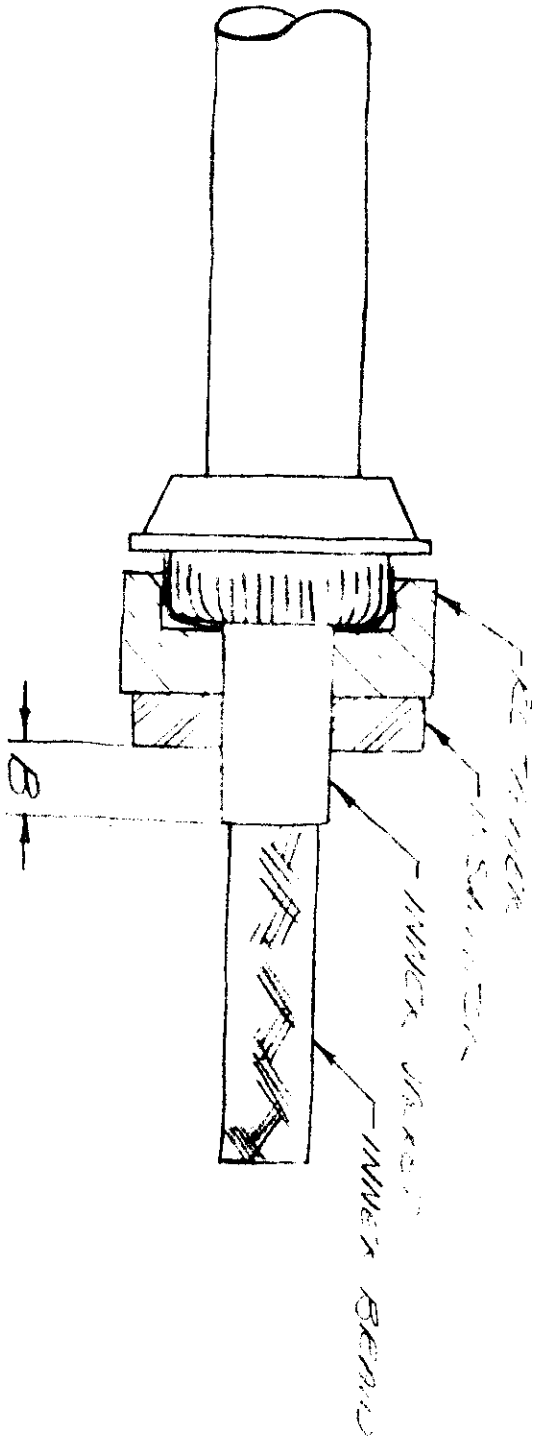
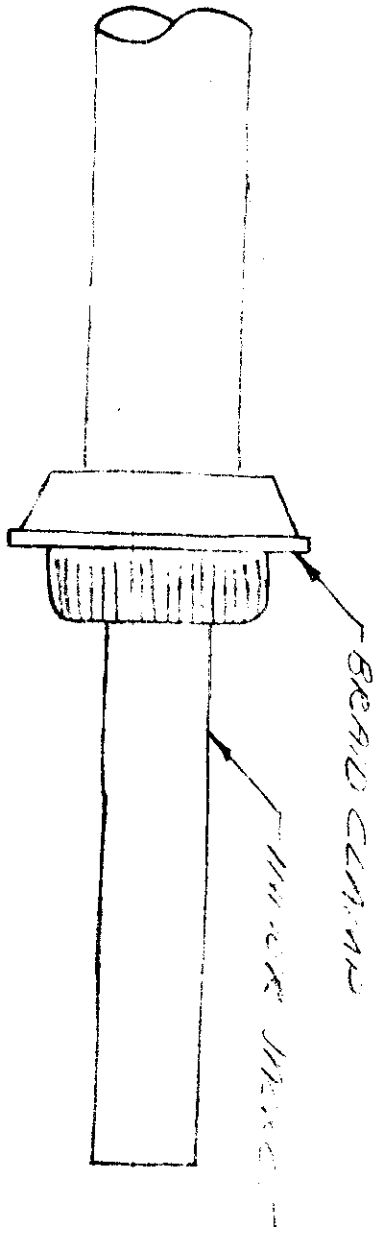
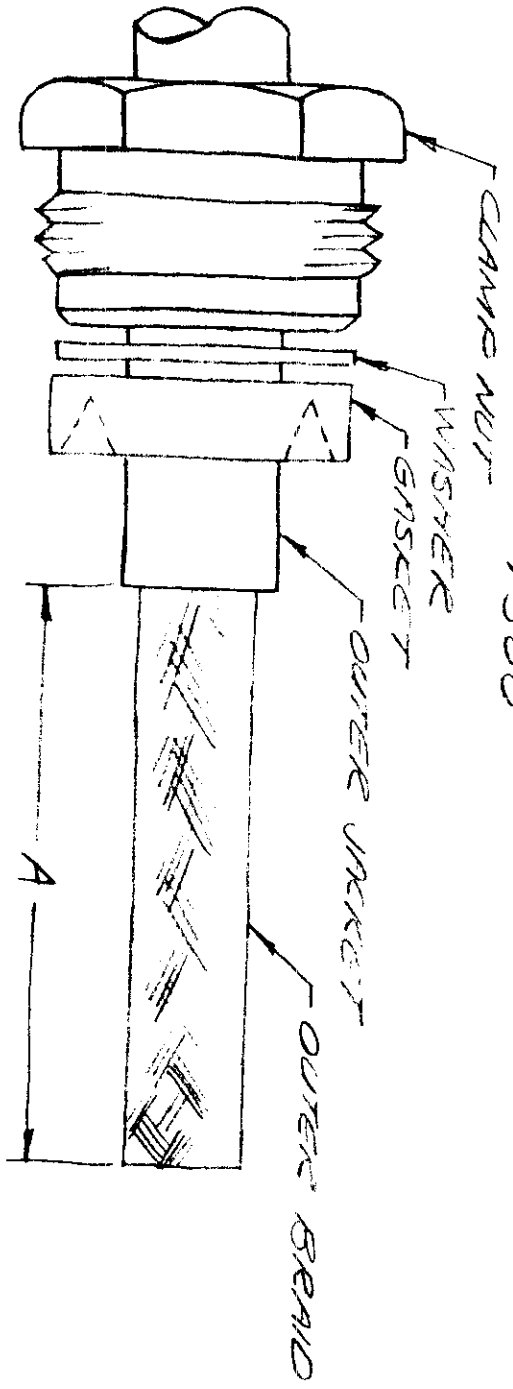
CABLING PROCEDURE 1300

1. CUT CABLE END SQUARE, PLACE CLAMP NUT, WASHER AND CASKET OVER JACKET. REMOVE OUTER JACKET TO DIMENSION "A".
2. PLACE BRAID CLAMP OVER OUTER BRAID AGAINST JACKET CUT. COMB OUT BRAID AND FOLD BACK OVER BRAID CLAMP, TRIM IN USUAL MANNER.
3. ASSEMBLE RETAINER AND INSULATOR OVER INNER Braid. REMOVE OUTER JACKET TO DIMENSION "B".
4. PLACE BRAID CLAMP OVER INNER BRAID AGAINST INNER JACKET CUT. COMB OUT BRAID AND FOLD BACK OVER BRAID CLAMP. TRIM EVEN WITH BASE OF BRAID CLAMP.
5. PLACE WASHER OVER DISSIPATIVE AGAINST BRAID AND APPLY ALTERNATE TO DIMENSION "C" AND CENTER OF DISSIPATIVE TO DIMENSION "D".
6. SOLDER CENTER CONTACT TO SHIELD CONDUCTOR.
7. REMOVE INNER INSULATOR, RETAIN AND REMOVE INSULATOR, THEN INSERT INTO BODY. SLIDE BACK END PAIRS FORWARD, THREAD ASSEMBLY INTO CONNECTOR BODY AND LOCK SECURELY.

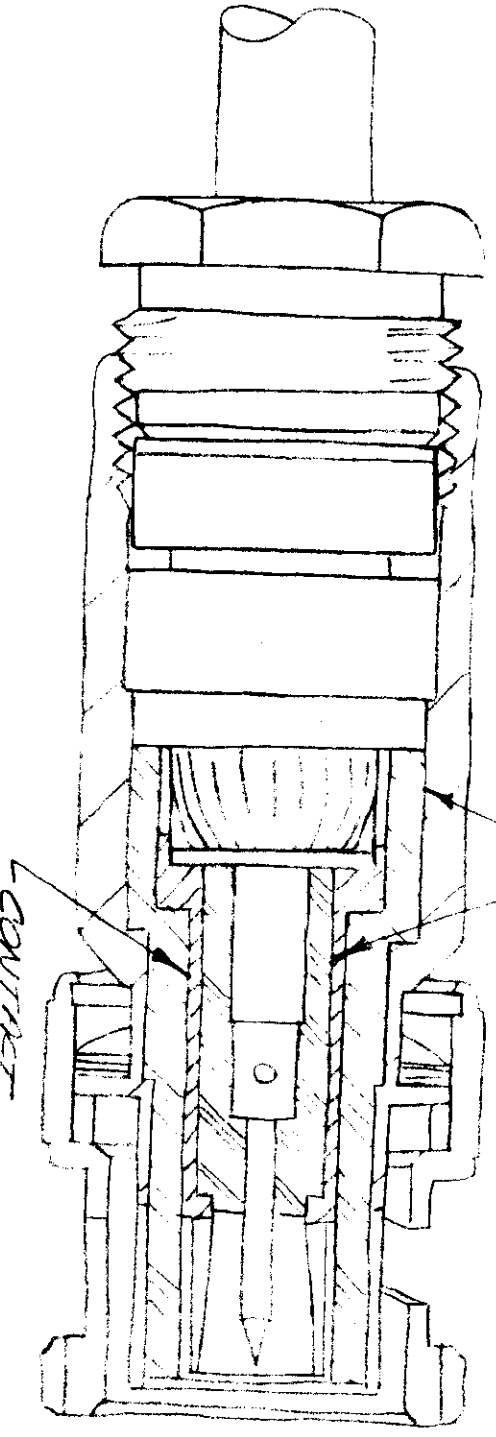
CODE	A	B	C	D
1301	<del>7</del> 1 1/16	.096	.210	3/32
1302	1 1/16	.125	.214	.080
1303	1 1/16	.096	.166	9/64
1304	1 1/16	.096	.210	3/32
1305	.69	.096	.102	.094
1306	.69	.096	.243	.110
1307	.10	.096	.243	.110

1995-1-9  
1995-3-9

CHBLING PROCEDURE  
1300



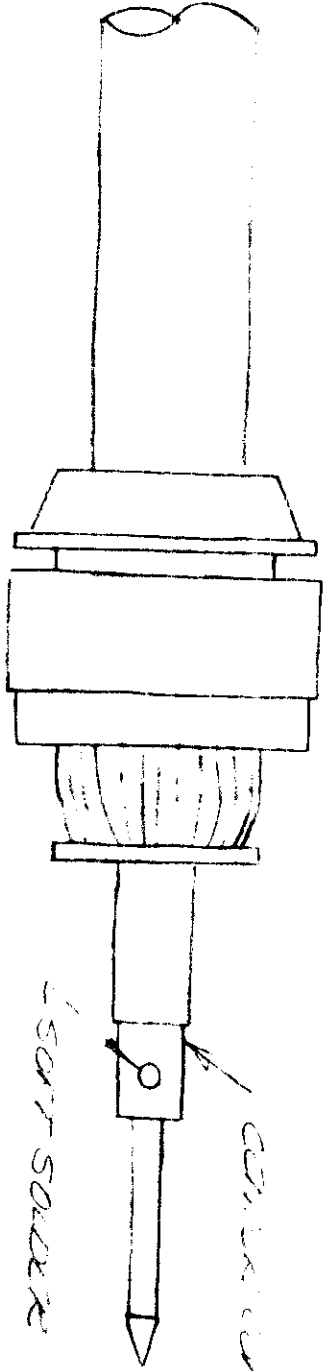
AMES REVISION TO IN,  
1. WASHING MACHINE  
REVISION 1300



OUTER INSULATOR

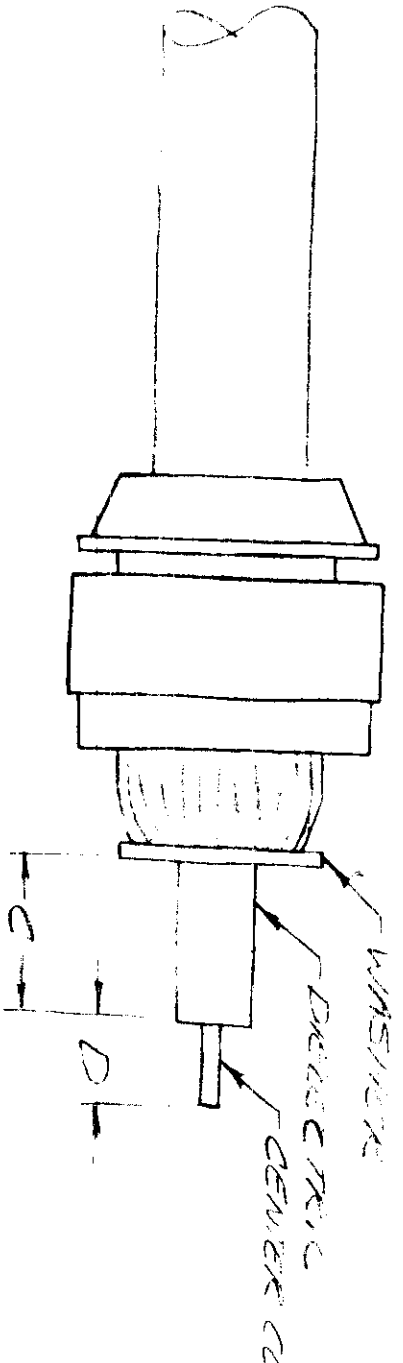
INNER INSULATOR

CONTACT



CONTACT SOLDER

CONTACT PIN



WASHER

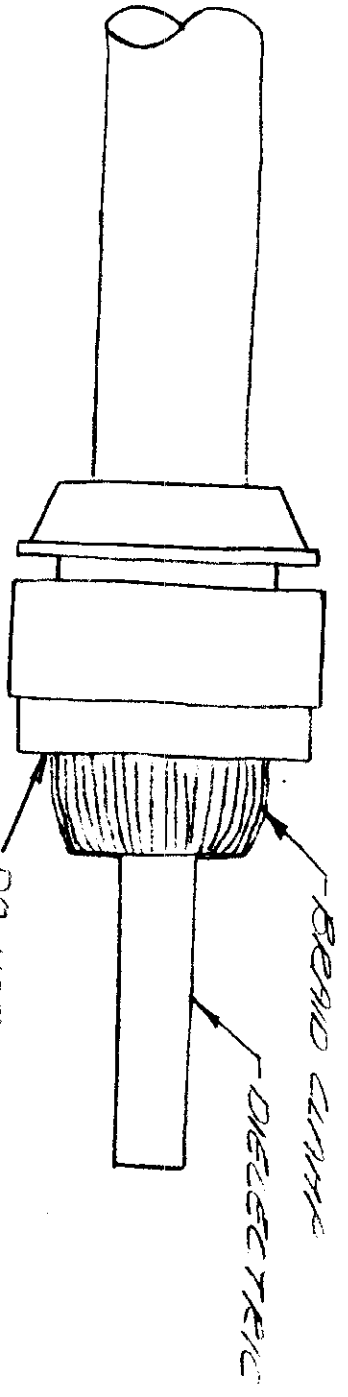
DIELECTRIC

DIELECTRIC CONTACT TUBE

C

D

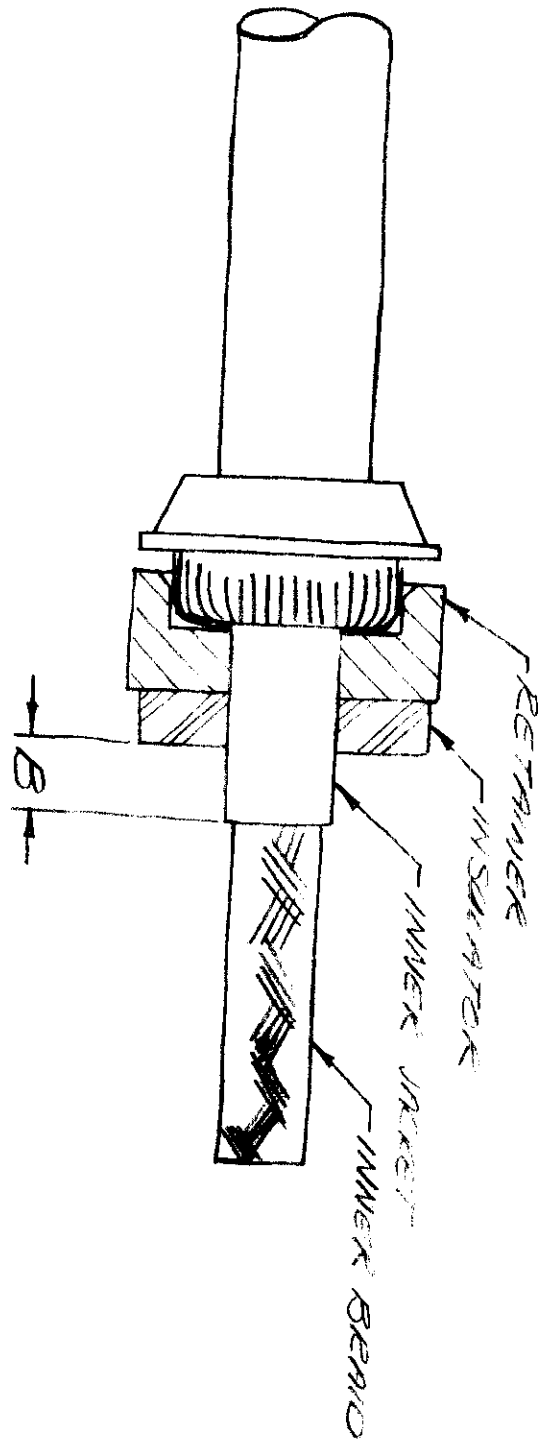
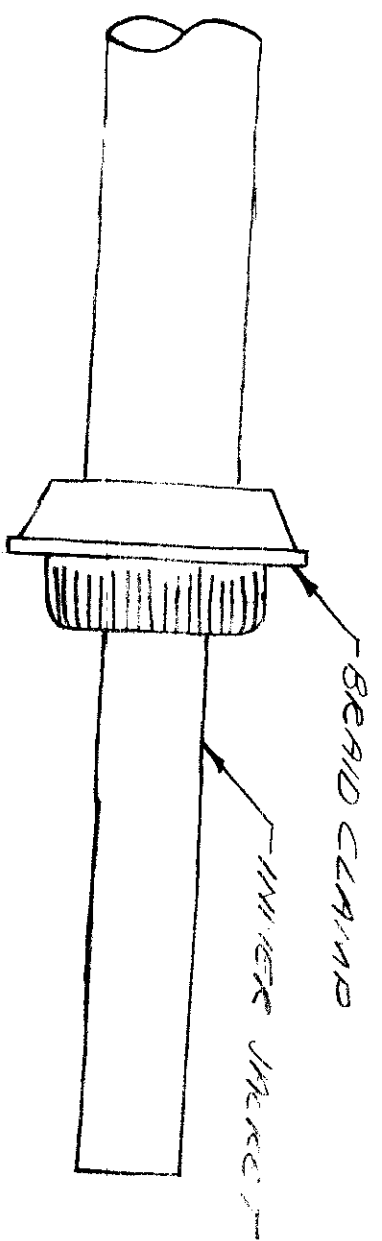
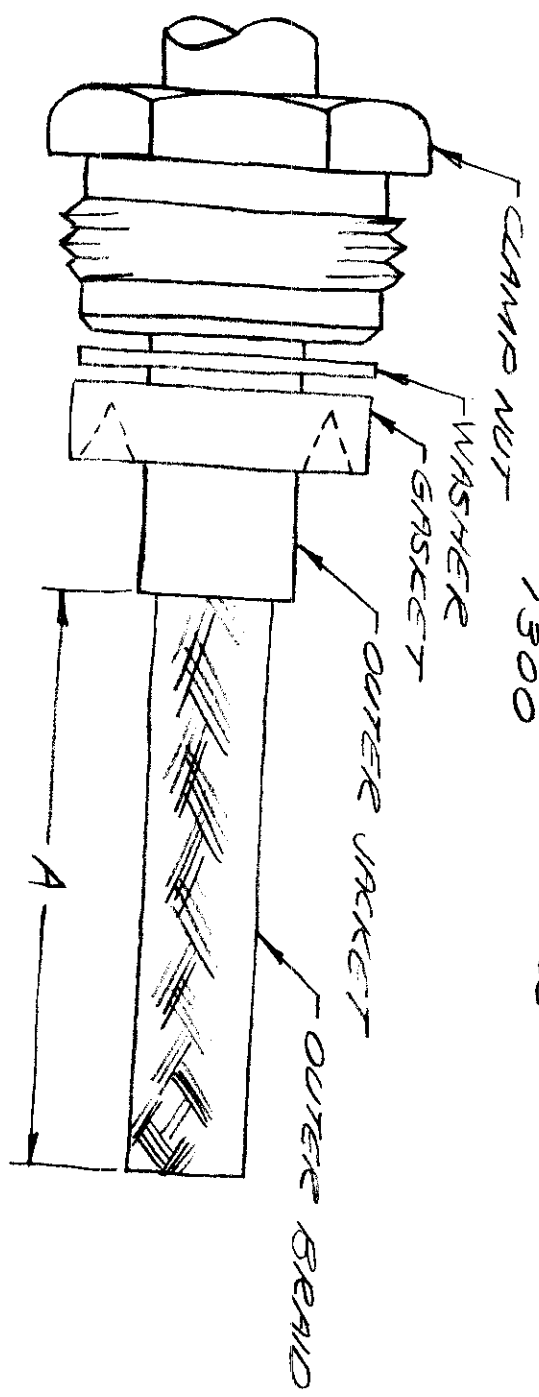
DO NOT ALLOW SOLDER ON THIS SURFACE

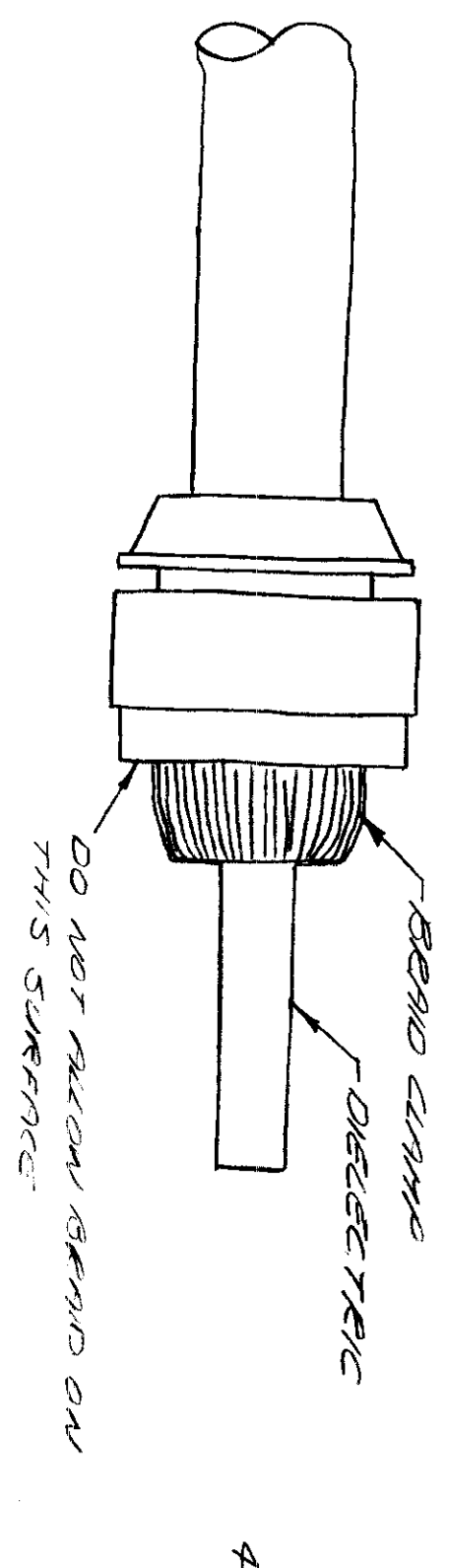
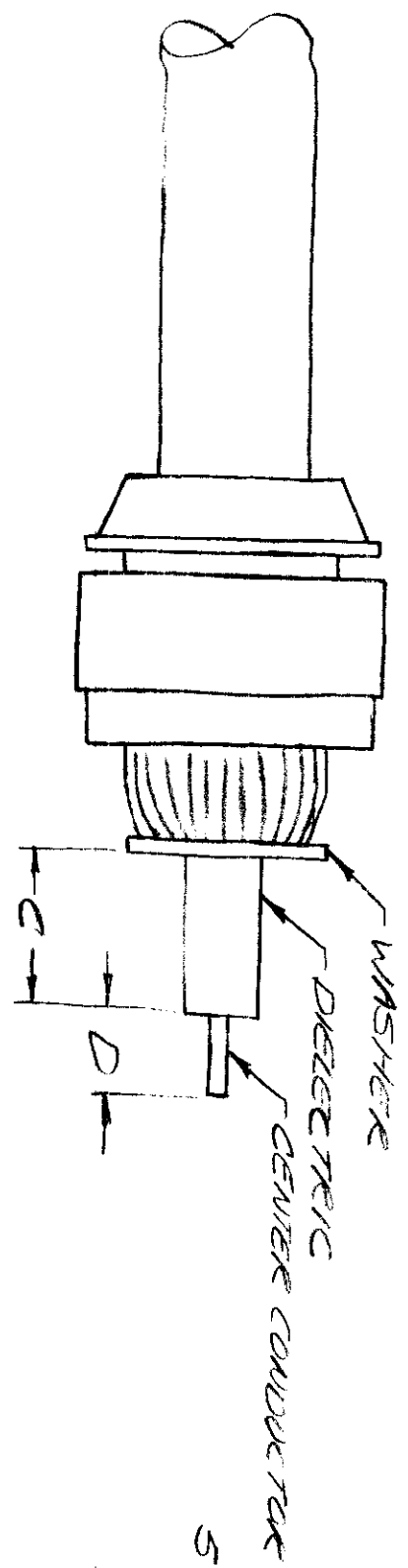
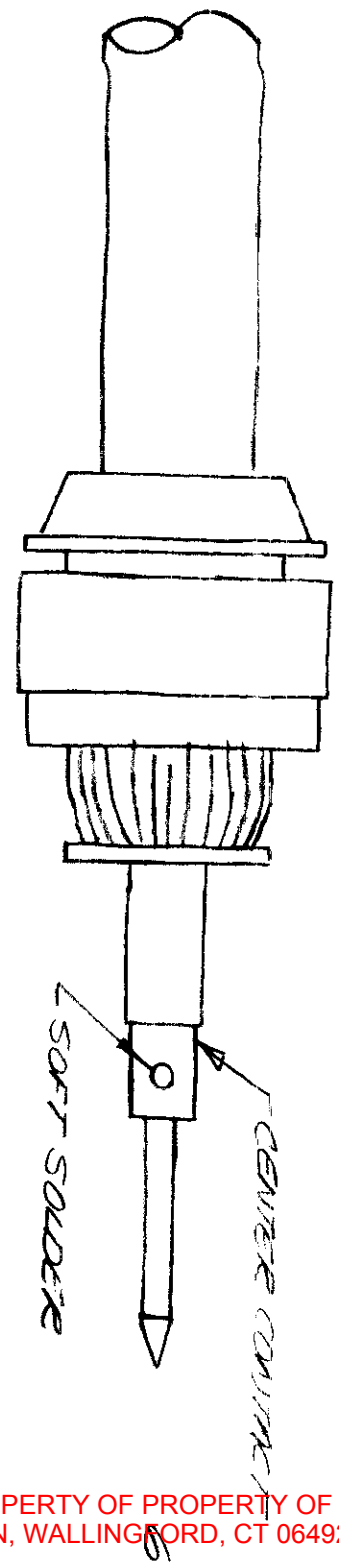
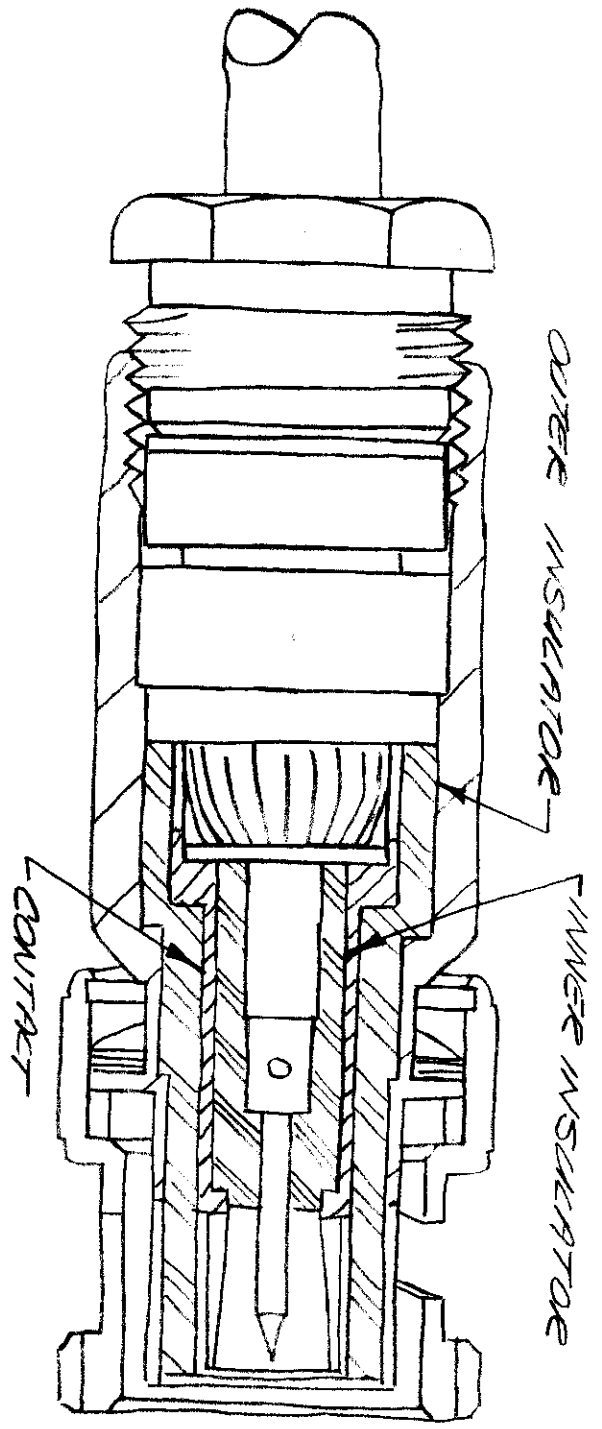


BRAIDED COPPER

DIELECTRIC

CABLING PROCEDURES  
1300

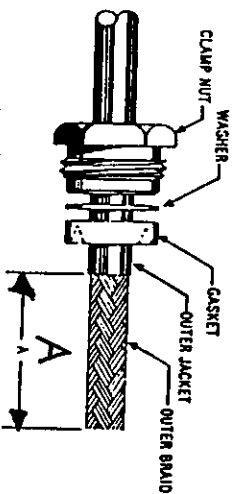




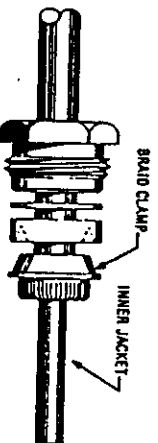


# CABLING PROCEDURE SKININGS

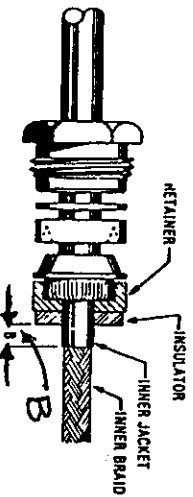
## CP-1300



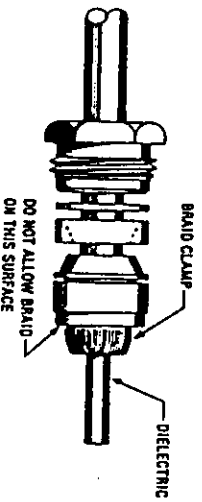
1. Cut cable end square. Slide clamp nut, washer and gasket over jacket. Remove outer jacket to dimension "A".



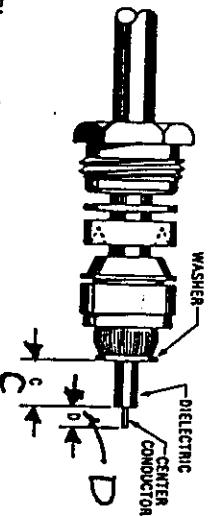
2. Place braid clamp over outer braid and against jacket cut. Comb out braid and fold back over braid clamp. Trim as shown.



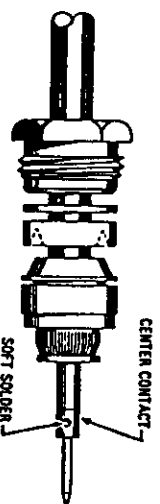
3. Assemble retainer and insulator over inner jacket. Remove inner jacket to dimension "B".



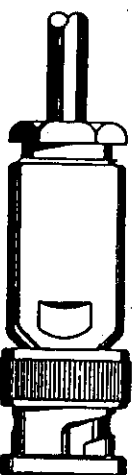
4. Place braid clamp over inner braid and against inner jacket cut. Comb out braid and fold back over braid clamp. Trim even with base of braid clamp.



5. Place washer over dielectric against braid. Trim dielectric to dimension "C" and center conductor to dimension "D".



6. Solder center contact to center conductor.

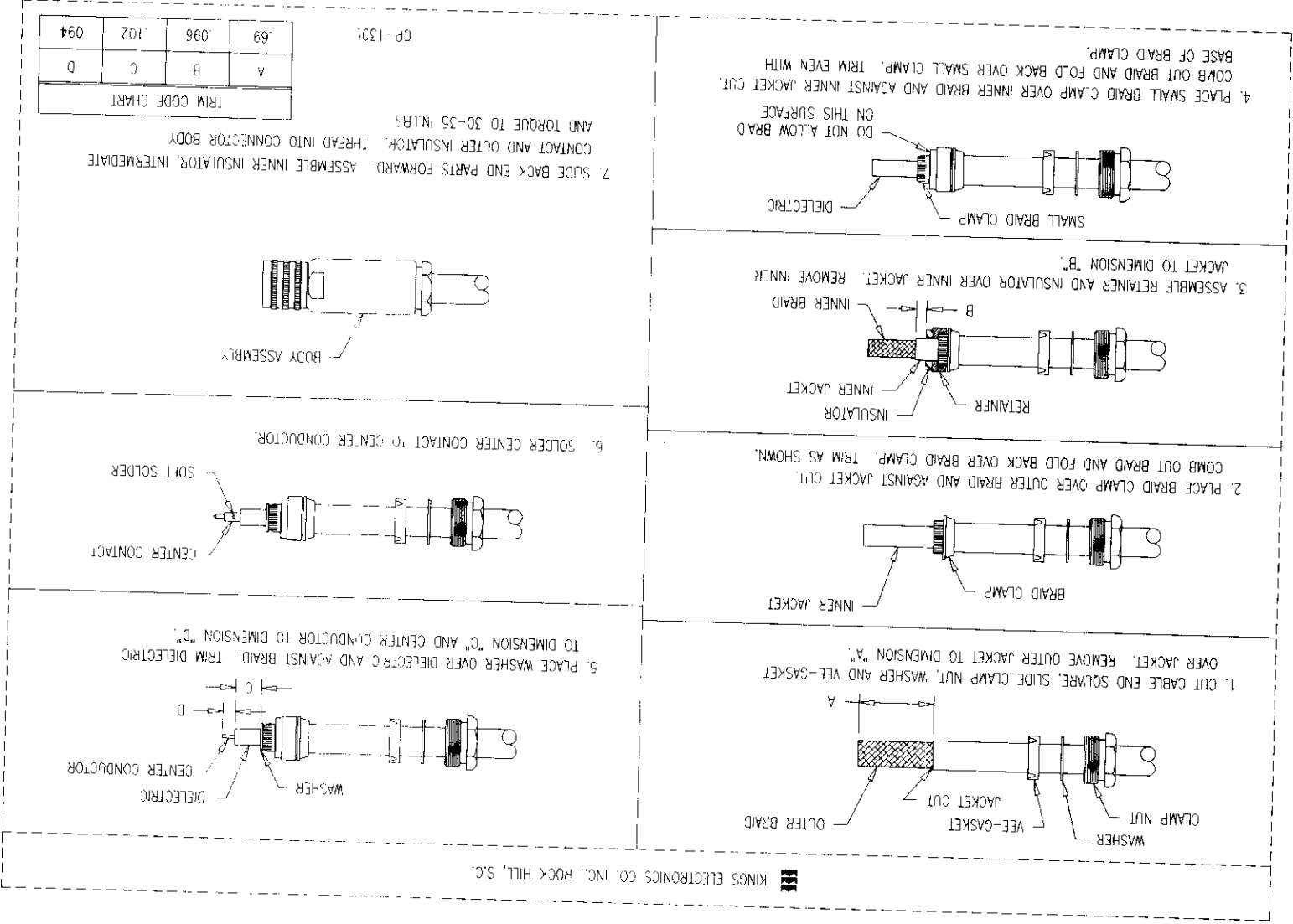


7. Assemble inner insulator, contact and outer insulator, then insert into body. Slide back end parts forward. Thread assembly into connector body and lock securely.

TRIM CODE CHART

CODE	A	B	C	D
1301	.69	.096	.210	.094
1302	.69	.125	.214	.080
1303	.69	.096	.166	.144

DASH NO.	M CODE	MADE FROM
-1	M88	INDIVIDUAL CUT SHEETS



NOTES:  
1. INSTRUCTION SHEET TO BE WHITE SULPHUR FREE PAPER.

REDUCED TO 5 IN. X 3.5 IN.

CP-1305

REVISIONS

ISSUE	CHANGES
1	ER 38882 DCT 6/27/3

SCALE 1:1

APPROX SURFACE AREA

USED ON 2755-7-5

REF:

CABLING INSTRUCTIONS

DATE	DESIGN
05/02/03	HVN

DATE	APPR.
------	-------

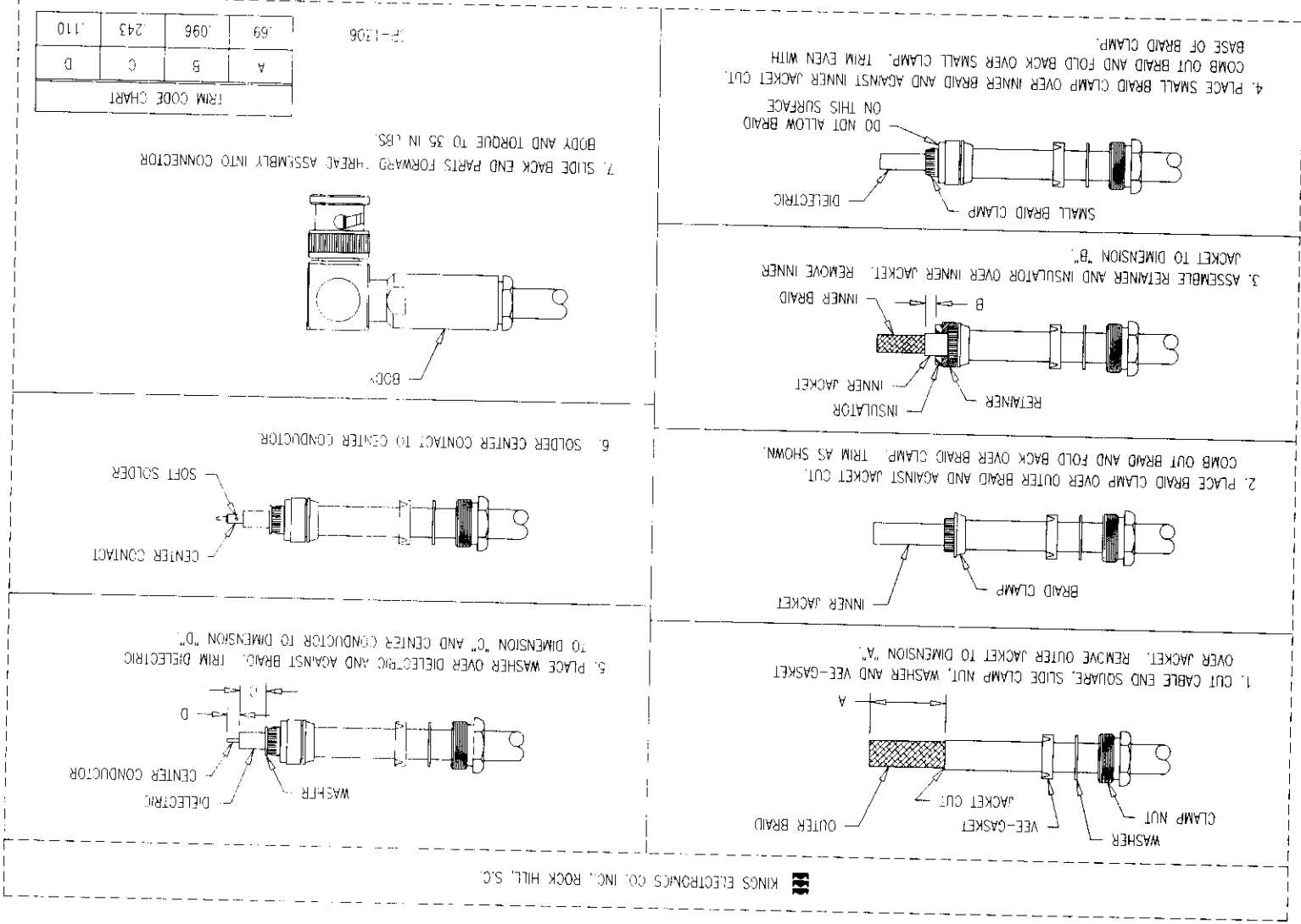
CP-1305

ROCK HILL, SOUTH CAROLINA 29730

**KINGS** ELECTRONICS CO., INC.

DASH NO.	M CODE	INDIVIDUAL CUT SHEETS
-1	M88	MADE FROM

KINGS ELECTRONICS CO., INC., ROCK HILL, S.C.



CP-1306

TRIM CODE CHART			
A	B	C	D
.69	.096	.243	.110

7. SLIDE BACK END PARTS FORWARD. TIGHTEN ASSEMBLY INTO CONNECTOR BODY AND TORQUE TO 35 IN. LBS.

NOTES:  
1. INSTRUCTION SHEET TO BE WHITE SULPHUR FREE PAPER.

REDUCE TO 5 IN X 3.5 IN.

CP-1306

REVISIONS	
ISSUE	CHANGES
1	ER 38882 DCT 6/27/3
SCALE 1:1	
APPROX SURFACE AREA	
USED ON 1966-5-5	
REF:	
CABLING INSTRUCTIONS	
DRAWN	HVN
DESIGN	CT
DATE	02/17/94
APPR.	DATE
ELECTRONICS CO., INC. ROCK HILL, SOUTH CAROLINA 29730	
CP-1306	

MAY 2007 THIS DRAWING BECAME THE PROPERTY OF PROPERTY OF WINCHESTER ELECTRONICS CORPORATION, WALLINGFORD, CT 06492

# BLIND PROCEDURE

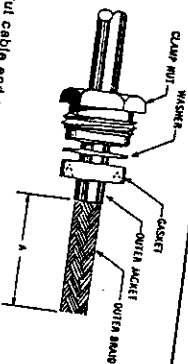
TER

SKINGS

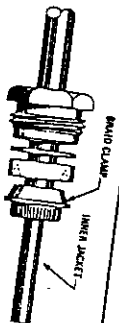
CP-1300

TRIM CODE CHART

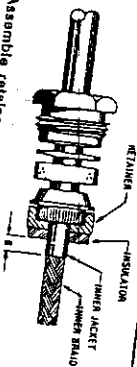
CODE	A		B		C		D	
	IN.	MM	IN.	MM	IN.	MM	IN.	MM
1301	.69	17.53	.096	2.43	.210	5.33	.094	2.39
1302	.69	17.53	.125	3.18	.214	5.43	.080	2.03
1303	.69	17.53	.096	2.43	.166	4.22	.141	3.58
1305	.69	17.53	.096	2.43	.102	2.59	.094	2.39
1306	.69	17.53	.096	2.43	.243	6.17	.110	2.82



1. Cut cable end square. Slide clamp nut, washer and gasket over jacket. Remove outer jacket to dimension "A".



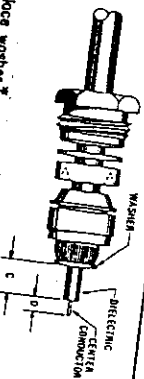
2. Place braid clamp over outer braid and against jacket cut. Comb out braid and fold back over braid. Trim as shown.



3. Assemble retainer and insulator over inner jacket. Remove inner jacket to dimension "B".



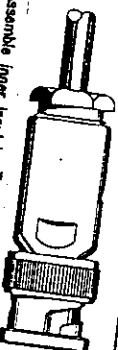
4. Place braid clamp over inner braid and against inner jacket cut. Comb out braid and fold back over braid. Trim even with base of braid clamp.



5. Place washer over dielectric against braid. Trim dielectric to dimension "C" and center conductor to dimension "D".  
\* Washer not used in angle connectors. "C" dimension from braid clamp.



6. Solder center contact to center conductor.

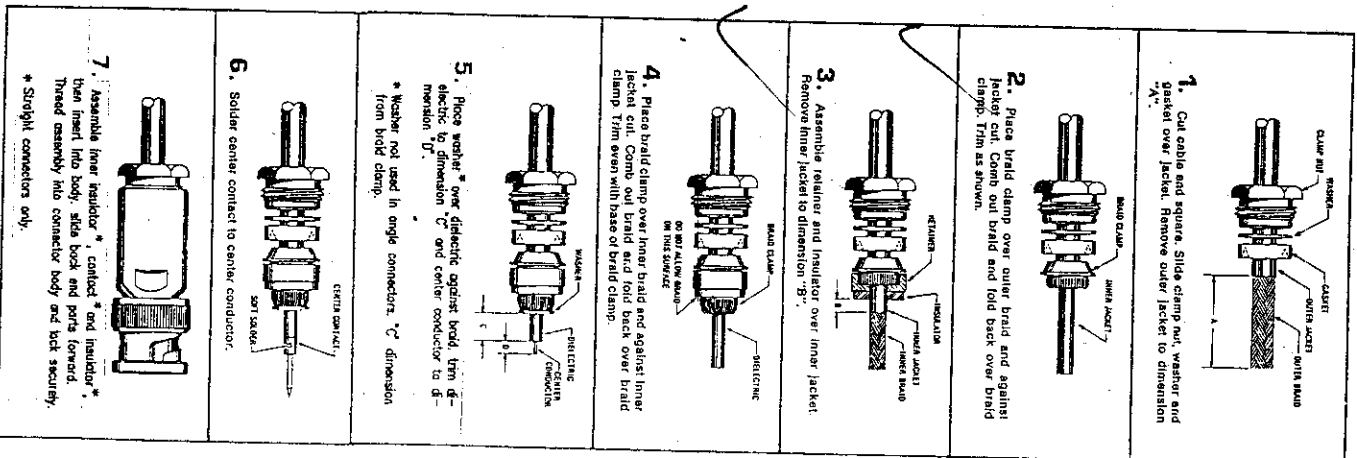


7. Assemble inner insulator, contact and insulator. Then insert into body, slide back and parts forward. Thread assembly into connector body and lock securely.  
\* Straight connectors only.

# CABLING PROCEDURE

WINKINGS

CP-1300



TRIM CODE CHART

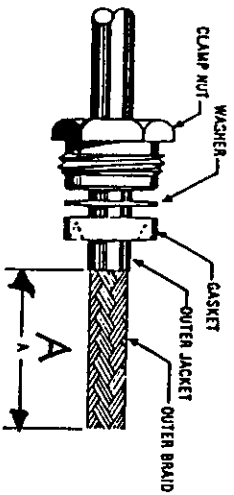
CODE	A		B		C		D	
	IN.	MM	IN.	MM	IN.	MM	IN.	MM
1301	.69	17.53	.096	2.43	2.19	5.33	.094	2.39
1302	.69	17.50	.125	3.18	2.14	5.43	.080	2.03
1303	.69	17.50	.096	2.43	.106	4.22	.141	3.58
1305	.69	17.53	.096	2.43	1.02	2.59	.094	2.39
1306	.69	17.53	.096	2.43	2.43	6.17	.110	2.82

E-17653

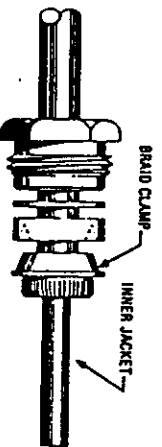
E-17652

# CABLING PROCEDURE SKININGS

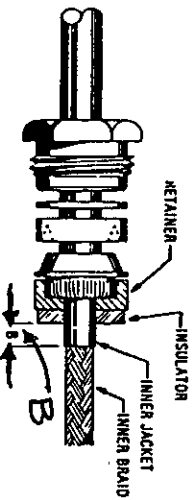
CP-1300



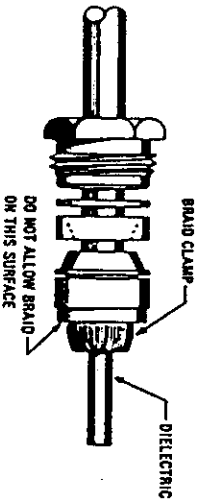
1. Cut cable end square. Slide clamp nut, washer and gasket over jacket. Remove outer jacket to dimension "A".



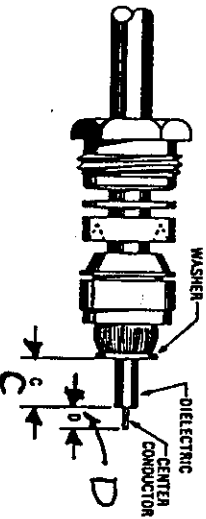
2. Place braid clamp over outer braid and against jacket cut. Comb out braid and fold back over braid clamp. Trim as shown.



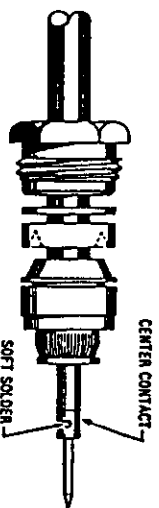
3. Assemble retainer and insulator over inner jacket. Remove inner jacket to dimension "B".



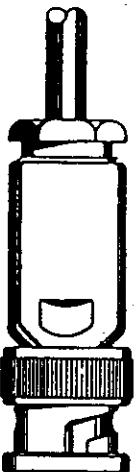
4. Place braid clamp over inner braid and against inner jacket cut. Comb out braid and fold back over braid clamp. Trim even with base of braid clamp.



5. Place washer over dielectric against braid. Trim dielectric to dimension "C" and center conductor to dimension "D".



6. Solder center contact to center conductor.



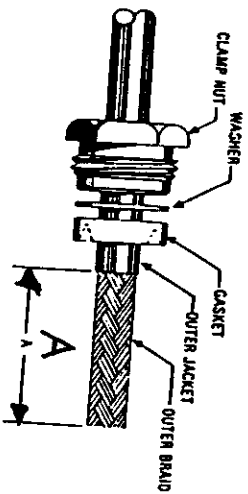
7. Assemble inner insulator, contact and outer insulator, then insert into body. Slide back end parts forward. Thread assembly into connector body and lock securely.

TRIM CODE CHART

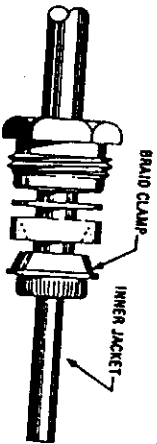
CODE	A	B	C	D
1301	.69	.096	.210	.094
1302	.69	.125	.214	.080
1303	.69	.096	.166	.141

# CABLING PROCEDURE SKININGS

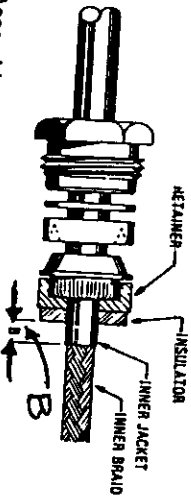
## CP-1300



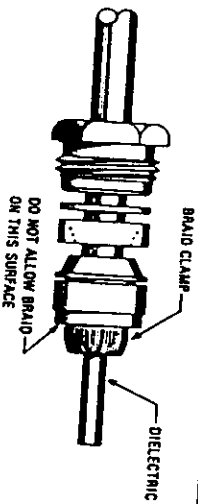
1. Cut cable end square. Slide clamp nut, washer and gasket over jacket. Remove outer jacket to dimension "A".



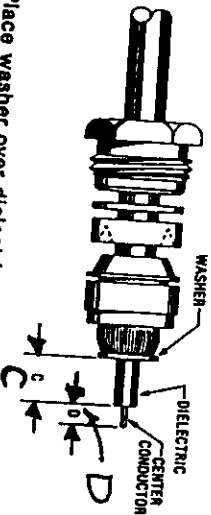
2. Place braid clamp over outer braid and against jacket cut. Comb out braid and fold back over braid clamp. Trim as shown.



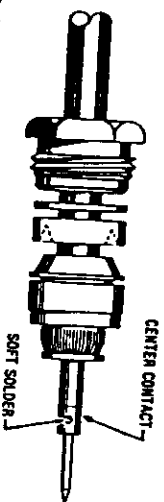
3. Assemble retainer and insulator over inner jacket. Remove inner jacket to dimension "B".



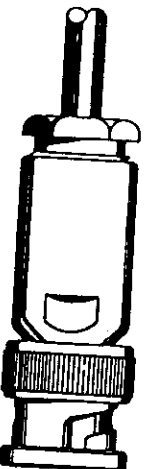
4. Place braid clamp over inner braid and against inner jacket cut. Comb out braid and fold back over braid clamp. Trim even with base of braid clamp.



5. Place washer over dielectric against braid. Trim dielectric to dimension "C" and center conductor to dimension "D".



6. Solder center contact to center conductor.



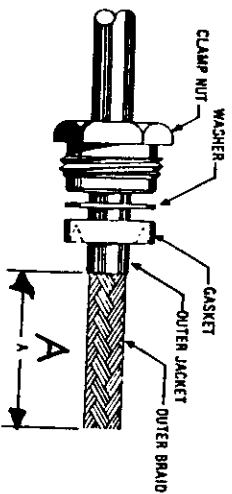
7. Assemble inner insulator, contact and outer insulator, then insert into body. Slide back and parts forward. Thread assembly into connector body and lock securely.

TRIM CODE CHART

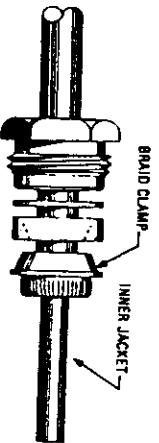
CODE	A	B	C	D
1301	.69	.096	.210	.094
1302	.69	.125	.214	.080
1303	.69	.096	.166	.141

# CABLING PROCEDURE SKININGS

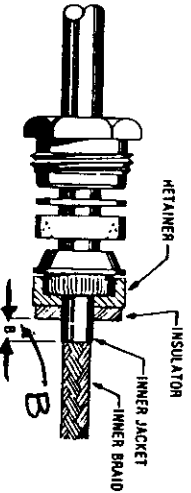
## CP-1300



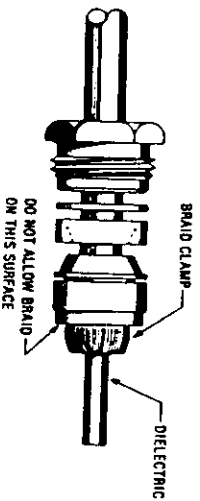
**1.** Cut cable end square. Slide clamp nut, washer and gasket over jacket. Remove outer jacket to dimension "A".



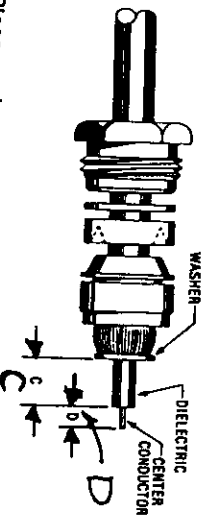
**2.** Place braid clamp over outer braid and against jacket cut. Comb out braid and fold back over braid clamp. Trim as shown.



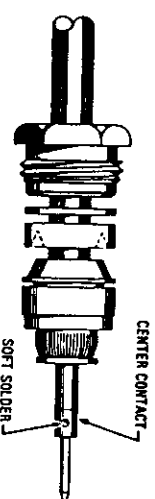
**3.** Assemble retainer and insulator over inner jacket. Remove inner jacket to dimension "B".



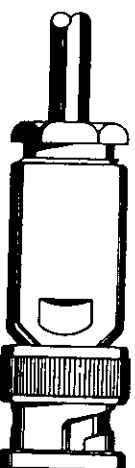
**4.** Place braid clamp over inner braid and against inner jacket cut. Comb out braid and fold back over braid clamp. Trim even with base of braid clamp.



**5.** Place washer over dielectric against braid. Trim dielectric to dimension "C" and center conductor to dimension "D".



**6.** Solder center contact to center conductor.



**7.** Assemble inner insulator, contact and outer insulator, then insert into body. Slide back end parts forward. Thread assembly into connector body and lock securely.

TRIM CODE CHART

CODE	A	B	C	D
1301	.69	.096	.210	.094
1302	.69	.125	.214	.080
1303	.69	.096	.166	.141

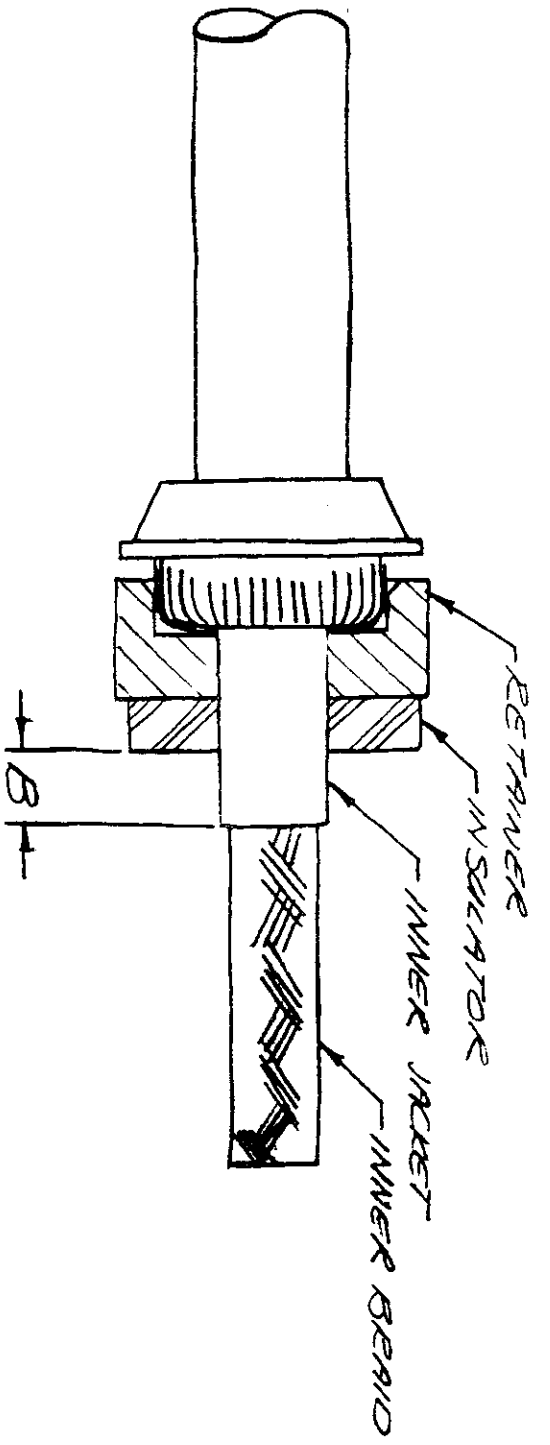
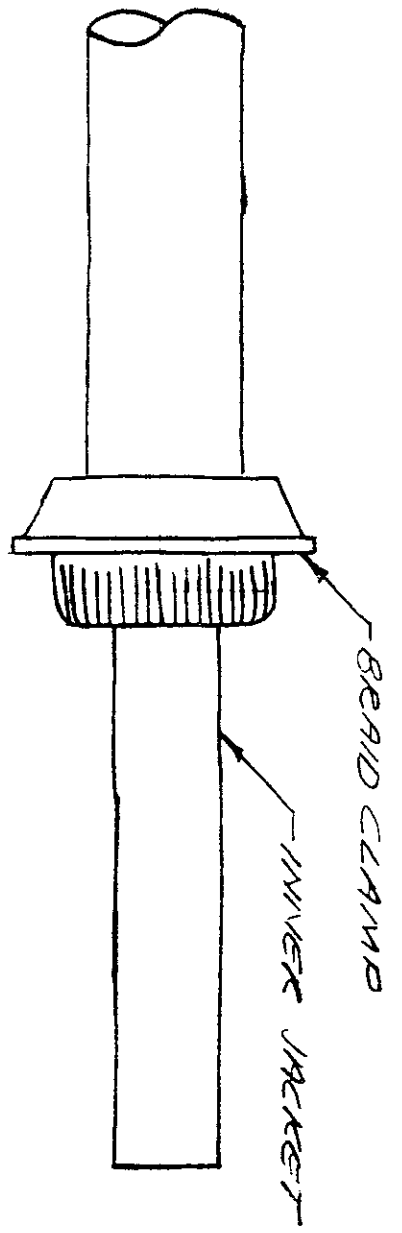
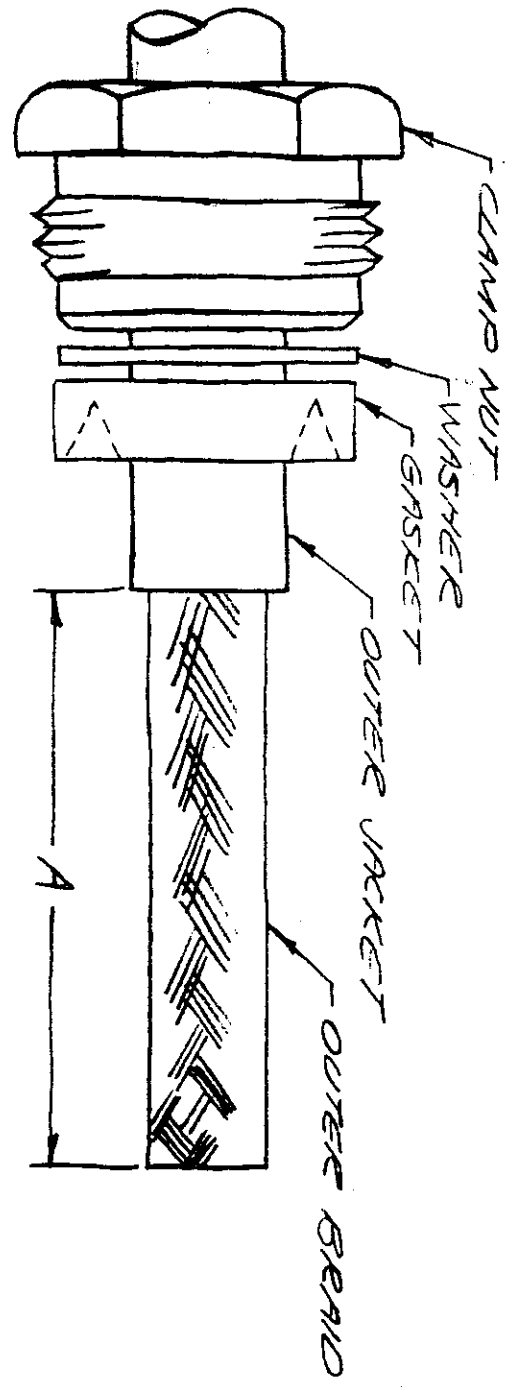


CABLING PROCEDURE 1300

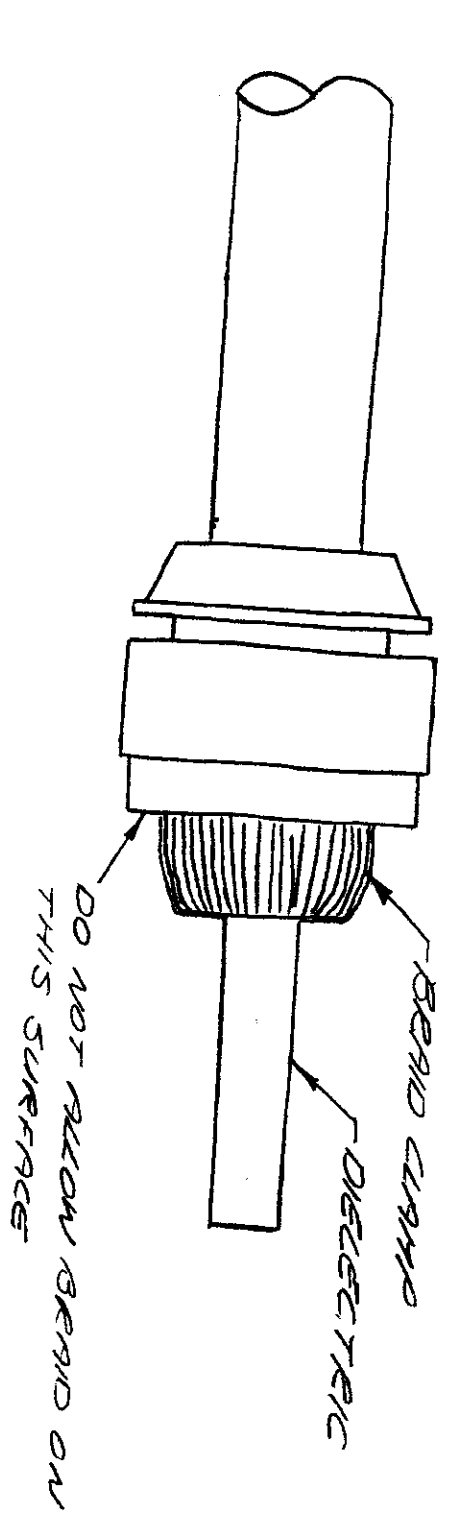
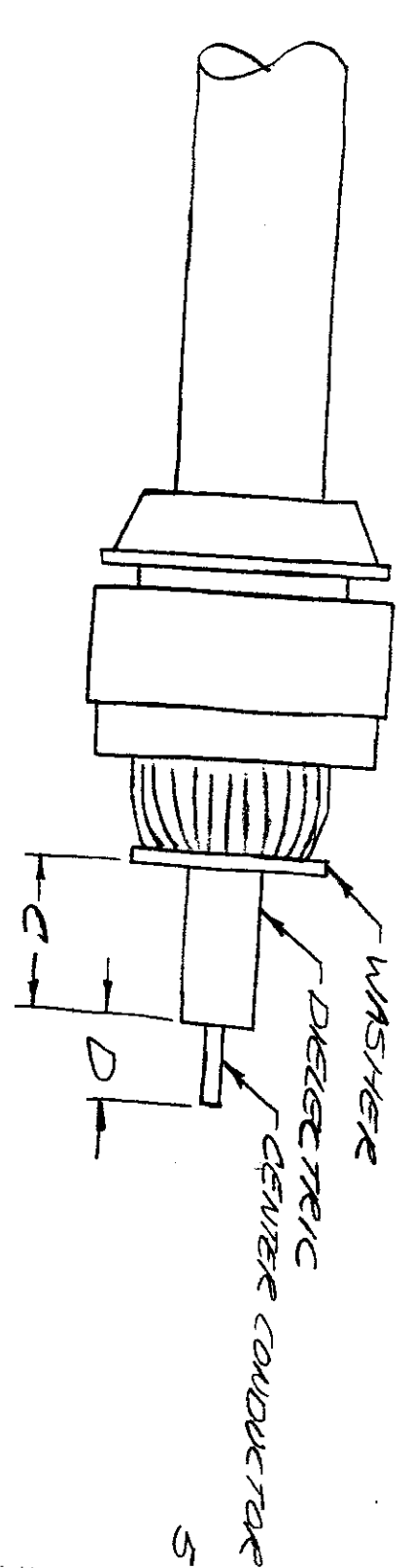
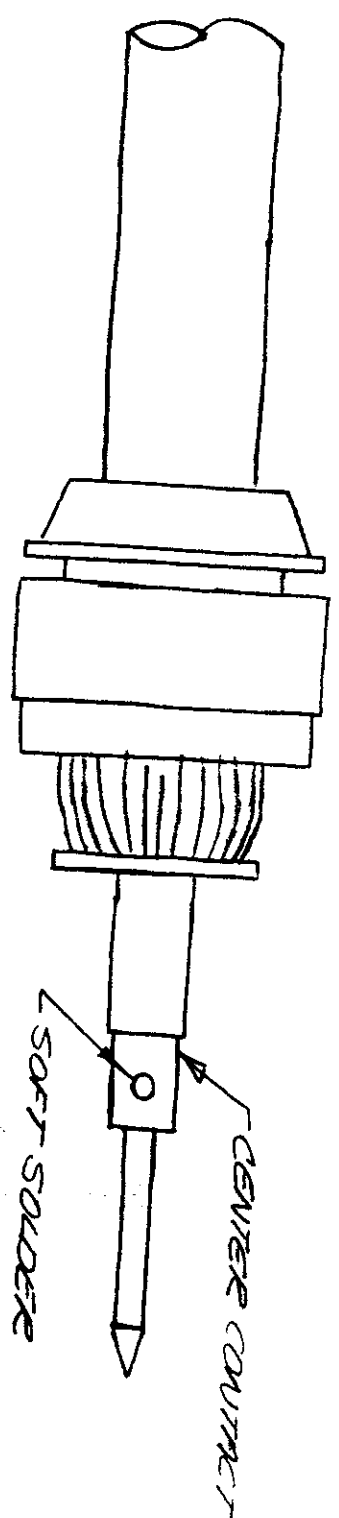
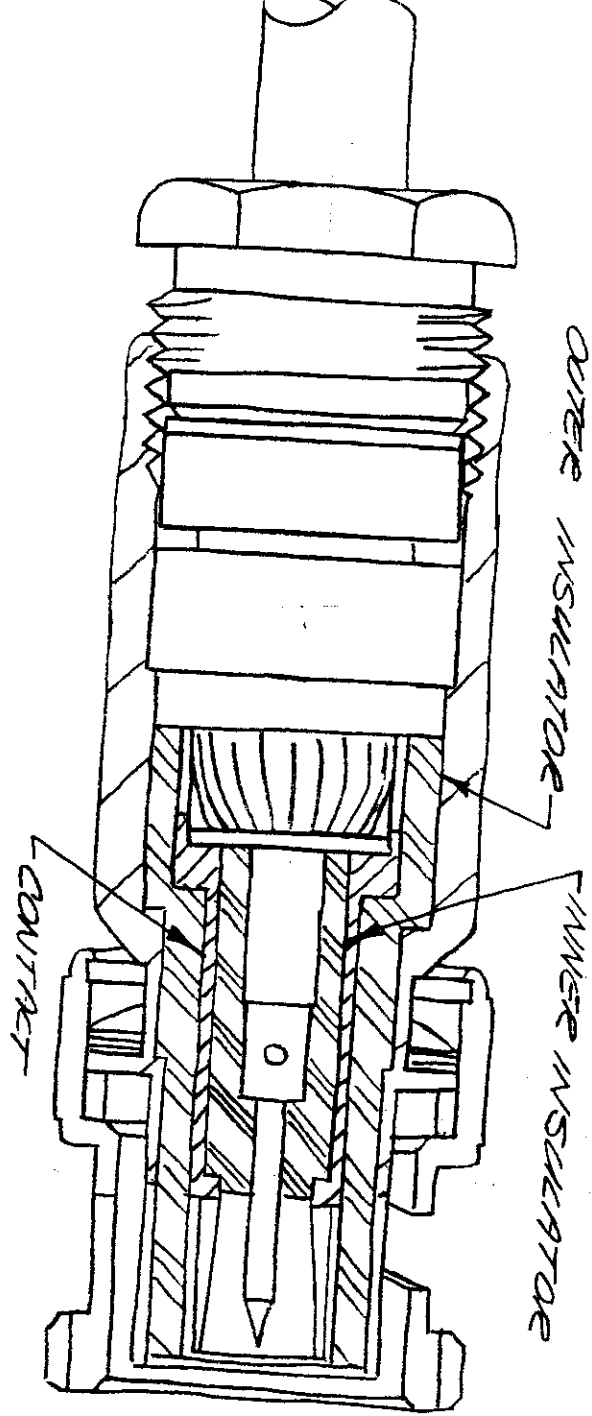
1. CUT CABLE END SQUARE, PLACE CLAMP NUT, WASHER AND GASKET OVER JACKET. REMOVE OUTER JACKET TO DIMENSION "A".
2. PLACE BRAID CLAMP OVER OUTER BRAID AGAINST JACKET CUT. COMB OUT BRAID AND FOLD BACK OVER BRAID CLAMP, TRIM IN USUAL MANNER.
3. ASSEMBLE RETAINER AND INSULATOR OVER INNER JACKET. REMOVE INNER JACKET TO DIMENSION "B".
4. PLACE BRAID CLAMP OVER INNER BRAID AGAINST INNER JACKET CUT. COMB OUT BRAID AND FOLD BACK OVER BRAID CLAMP, TRIM EVEN WITH BASE OF BRAID CLAMP.
5. PLACE WASHER OVER DIELECTRIC AGAINST BRAID AND TRIM DIELECTRIC TO DIMENSION "C" AND CENTER CONDUCTOR TO DIMENSION "D".
6. SOLDER CENTER CONTACT TO CENTER CONDUCTOR.
7. ASSEMBLE INNER INSULATOR, CONTACT AND OUTER INSULATOR, THEN INSERT INTO BODY. SLIDE BACK END PARTS FORWARD, THREAD ASSEMBLY INTO CONNECTOR BODY AND LOCK SECURELY.

CODE	A	B	C	D
1301	11/16	.096	.210	3/32

CABLING PROCEDURE  
1301



KINGS ELECTRONICS CO., Inc,  
40 MARBLEDALE ROAD  
TUCKAHOE 7, N. Y.

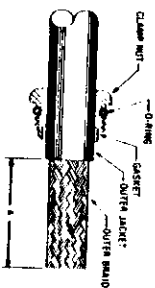


# CABLING PROCEDURE

# SKINGS

CP-1300A

## CP-1300A



1. Cut cable end square. Assemble O-ring. Slide clamp nut and gasket over jacket. Remove outer jacket to dimension "A".



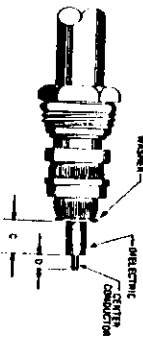
2. Place braid clamp over outer braid and against jacket cut. Comb out braid and fold back over braid clamp. Trim as shown.



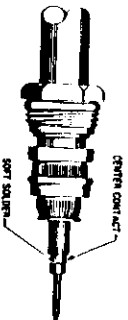
3. Assemble retainer and insulator over inner jacket. Remove inner jacket to dimension "B".



4. Place braid clamp over inner braid and against inner jacket cut. Comb out braid and fold back over braid clamp. Trim even with base of braid clamp.



5. Place washer over dielectric against braid. Trim dielectric to dimension "C". and center conductor to dimension "D".



6. Solder center contact to center conductor.



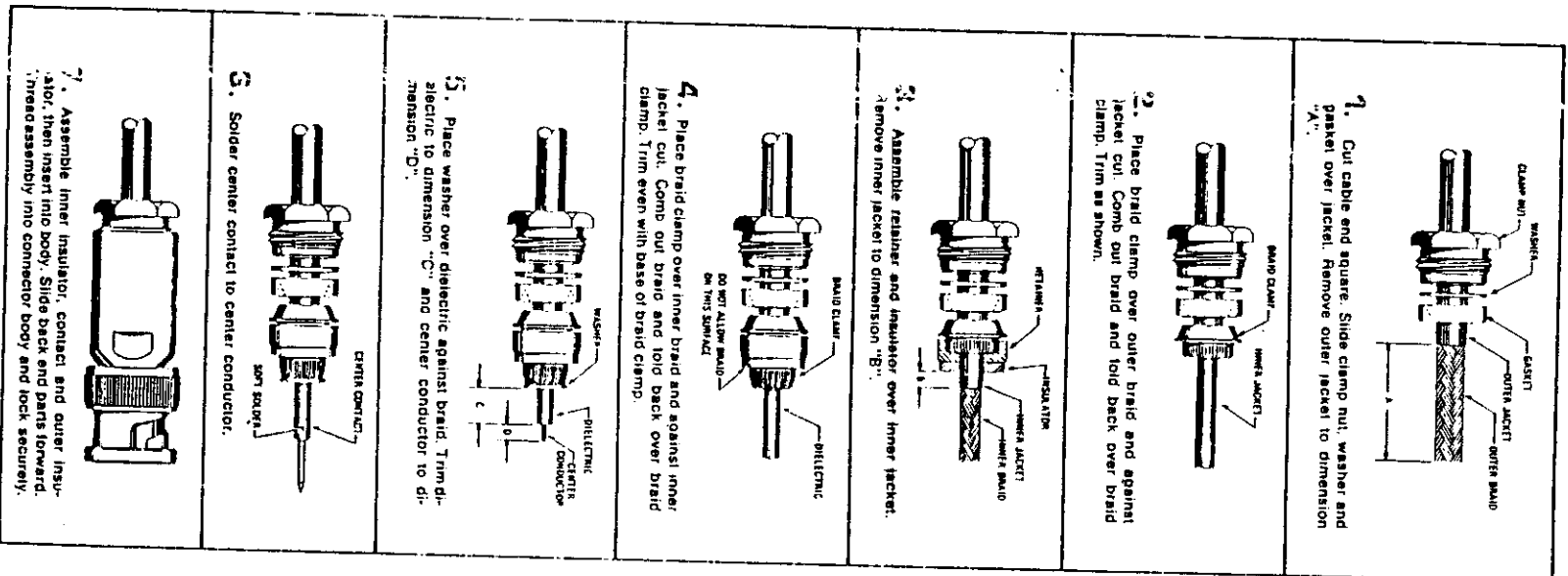
7. Assemble inner insulator, contact and outer insulator, then insert into body. Slide back end parts forward. Thread assembly into connector body and lock securely.

### TRIM CODE CHART

CODE	A	B	C	D
1301A	11/16	.096	.210	3/32

# CABLING PROCEDURES

CP-1300



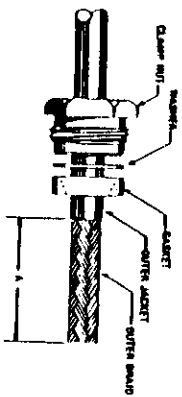
TRIM CODE CHART

CODE	A		B		C		D	
	IN.	MM.	IN.	MM.	IN.	MM.	IN.	MM.
1302	.59	17.53	.125	3.18	.214	5.43	.080	2.03

# CABLING PROCEDURES

**MASTFD**

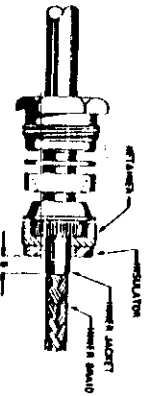
CP-1300



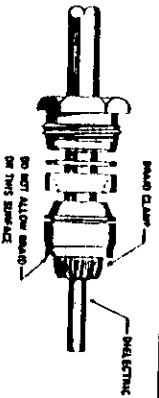
1. Cut cable end square. Slide clamp nut, washer and gasket over jacket. Remove outer jacket to dimension "A".



2. Place braid clamp over outer braid and against jacket cut. Comb out braid and fold back over braid clamp. Trim as shown.



3. Assemble retainer and insulator over inner jacket. Remove inner jacket to dimension "C".



4. Place braid clamp over inner braid and against inner jacket cut. Comb out braid and fold back over braid clamp. Trim even with base of braid clamp.



5. Place washer over dielectric against braid. Trim dielectric to dimension "E" and center conductor to dimension "C".



6. Solder center contact to center conductor.



7. Assemble inner insulator, contact and outer insulator, then insert into body. Slide back and parts forward. Thread assembly into connector body and lock securely.

TRIM CODE CHART

CODE	A	B	C	D
IN	MM	IN	MM	IN
1304				

SAME AS 1301

# CABLING PROCEDURE

# SKINGS

CP-1300A

CP-1300A

**1.** Cut cable and square. Assemble O-ring, Slide clamp nut and gasket over jacket. Remove outer jacket to dimension "A".

**2.** Place braid clamp over outer braid and against jacket cut. Comb out braid and fold back over braid clamp. Trim as shown.

**3.** Assemble retainer and insulator over inner jacket. Remove inner jacket to dimension "B".

**4.** Place braid clamp over inner braid and against inner jacket cut. Comb out braid and fold back over braid clamp. Trim even with base of braid clamp.

**5.** Place washer over dielectric against braid. Trim dielectric to dimension "C" and center conductor to dimension "D".

**6.** Solder center contact to center conductor.

**7.** Assemble inner insulator, contact and outer insulator, then insert into body. Slide back end parts forward. Thread assembly into connector body and lock securely.

TRIM CODE CHART

CODE	A	B	C	D
1303	1/16	.096	—	.318

# CABLING PROCEDURE

SKINGS

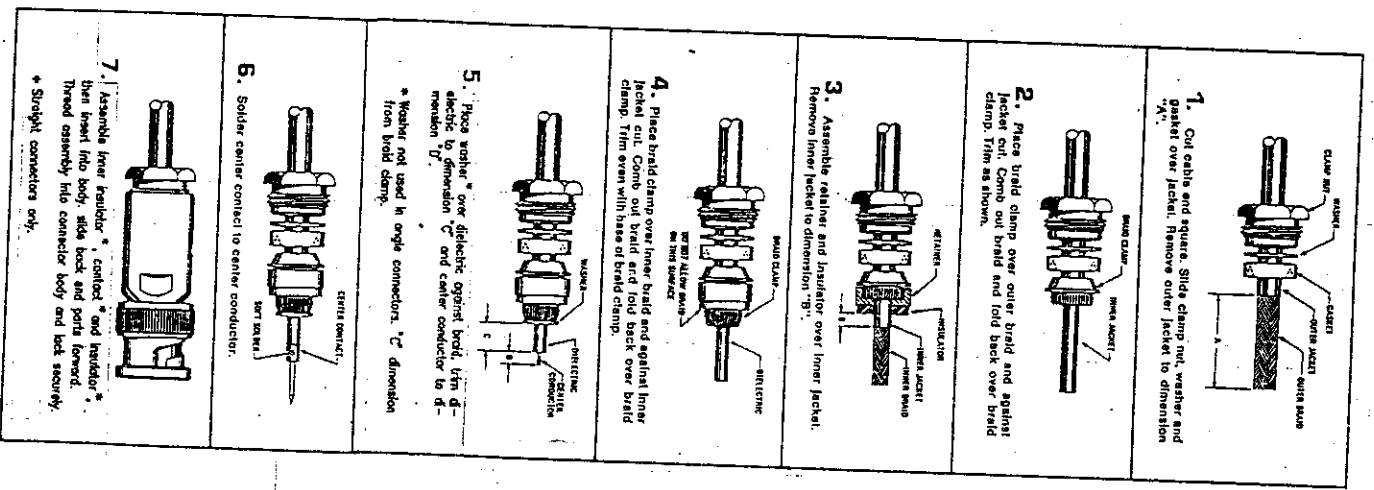
CP-1300

CP-1307

CP-1307

MASTER

MASTER



TRIM CODE CHART

CODE	A				B				C				D			
	IN.	IN.	IN.	IN.	IN.	IN.	IN.	IN.	IN.	IN.	IN.	IN.	IN.	IN.	IN.	IN.
1	.69	.096	.108	.94												

MASTER



CABLING PROCEDURE 1300A

1. CUT CABLE END SQUARE, ASSEMBLE O-RING. PLACE CLAMP NUT AND GASKET OVER JACKET. REMOVE OUTER JACKET TO DIMENSION "A".
2. PLACE BRAID CLAMP OVER OUTER BRAID AGAINST JACKET CUT. COMB OUT BRAID AND FOLD BACK OVER BRAID CLAMP, TRIM IN USUAL MANNER.
3. ASSEMBLE RETAINER AND INSULATOR OVER INNER JACKET. REMOVE INNER JACKET TO DIMENSION "B".
4. PLACE BRAID CLAMP OVER INNER BRAID AGAINST INNER JACKET CUT. COMB OUT BRAID AND FOLD BACK OVER BRAID CLAMP, TRIM EVEN WITH BASE OF BRAID CLAMP.
5. PLACE WASHER OVER DIELECTRIC AGAINST BRAID AND TRIM DIELECTRIC TO DIMENSION "C" AND CENTER CONDUCTOR TO DIMENSION "D".
6. SOLDER CENTER CONTACT TO CENTER CONDUCTOR.
7. ASSEMBLE INNER INSULATOR, CONTACT AND OUTER INSULATOR, THEN INSERT INTO BODY. SLIDE BACK END PARTS FORWARD, THREAD ASSEMBLY INTO CONNECTOR BODY AND LOCK SECURELY.

CODE	A	B	C	D
1301A	1/16	.096	.210	3/32

# CABLING PROCEDURES

CP-1300

MASTER

**1.** Cut cable and square. Slide clamp nut, washer and gasket over jacket. Remove outer jacket to dimension "A".

**2.** Place braid clamp over outer braid and against jacket cut. Comb out braid and fold back over braid clamp. Trim as shown.

**3.** Assemble retainer and insulator over inner jacket. Remove inner/jacket to dimension "B".

**4.** Place braid clamp over inner braid and against inner jacket cut. Comb out braid and fold back over braid clamp. Trim even with base of braid clamp.

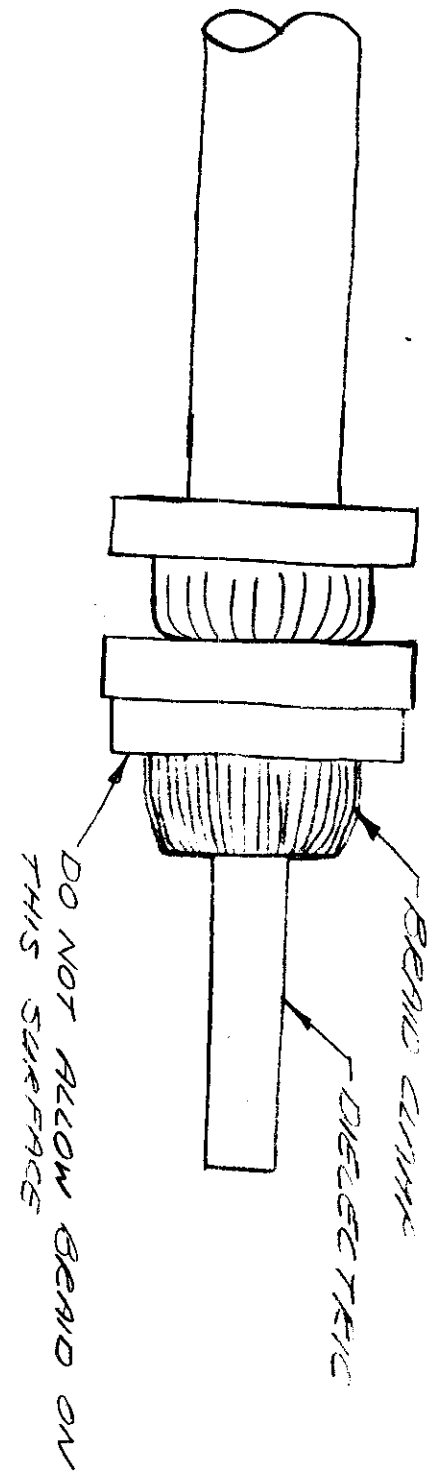
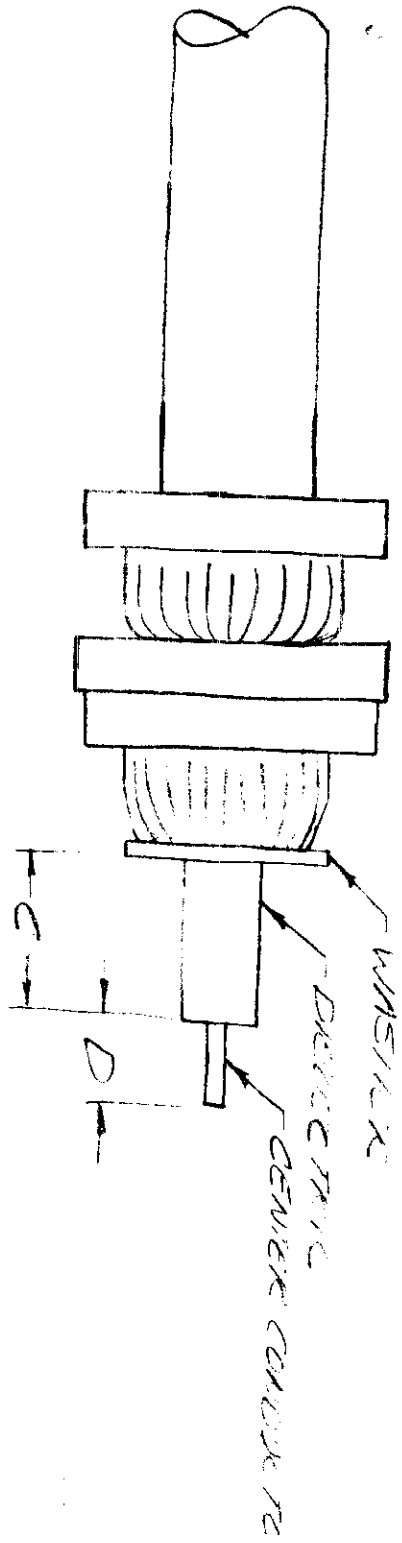
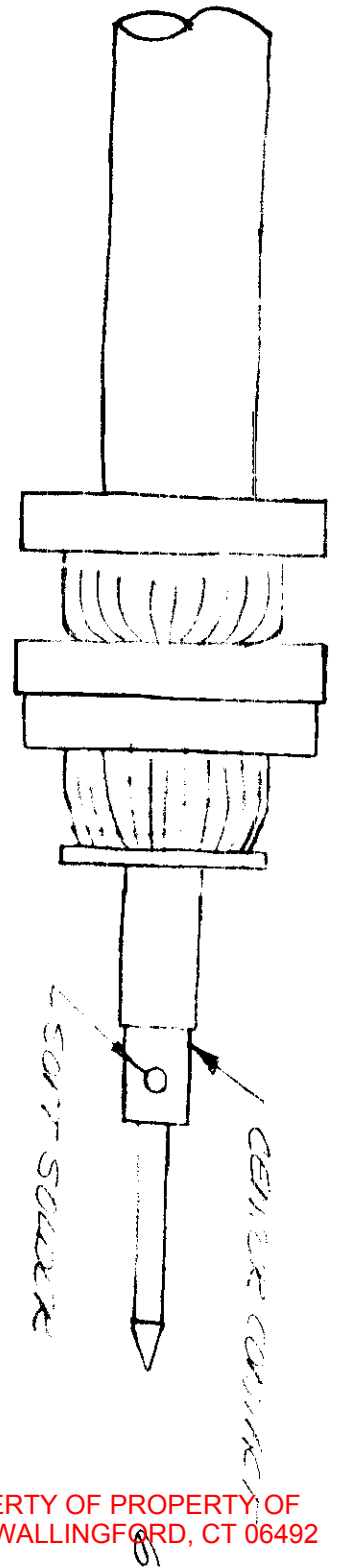
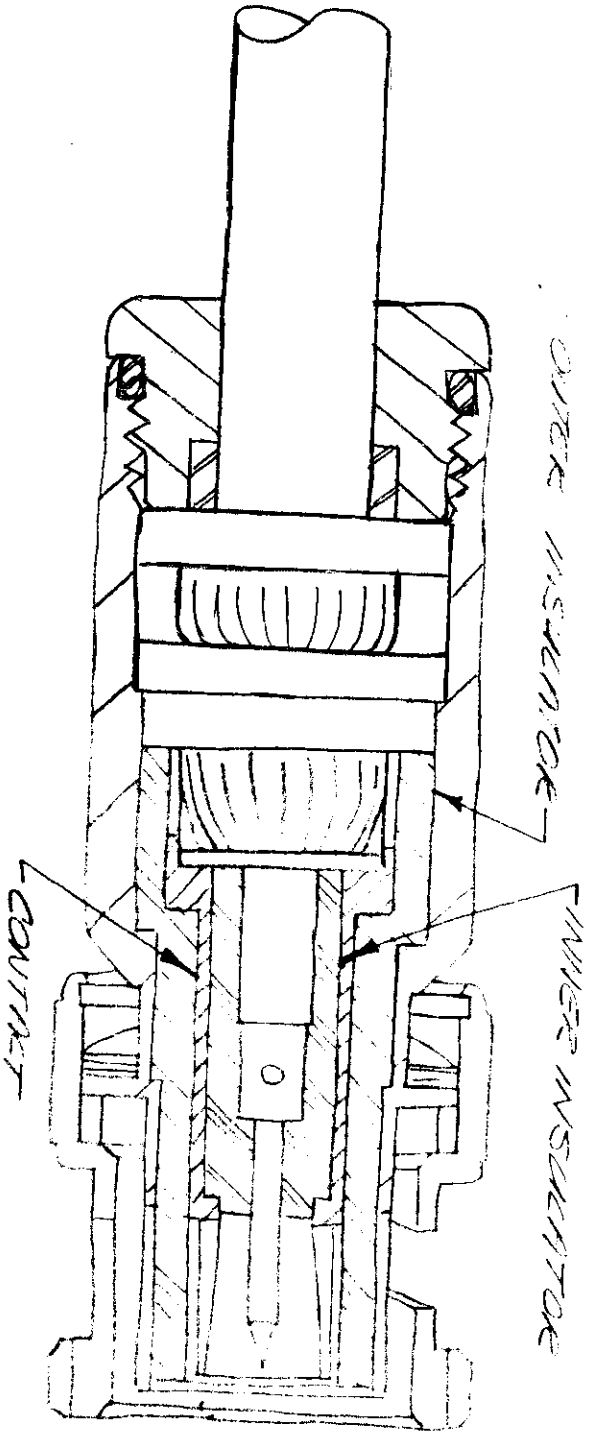
**5.** Place washer over dielectric against braid. Trim dielectric to dimension "C" and center conductor to dimension "D".

**6.** Solder center contact to center conductor.

**7.** Assemble inner insulator, contact and outer insulator, then insert into body. Slide back end parts forward. Thread assembly into connector body and lock securely.

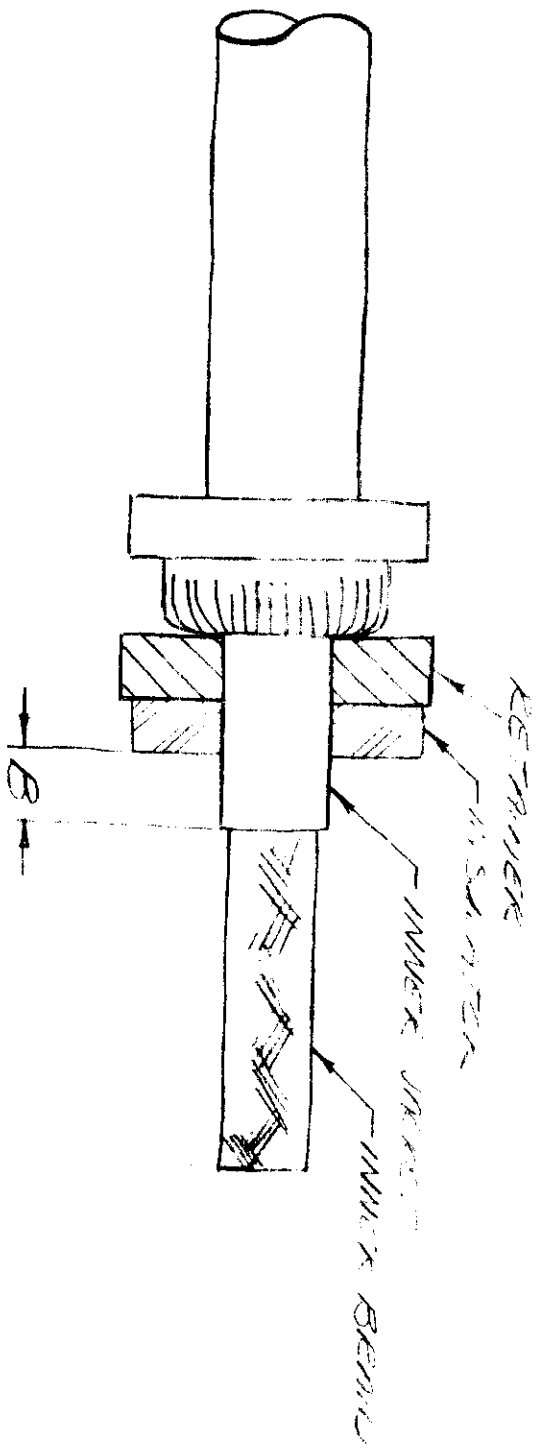
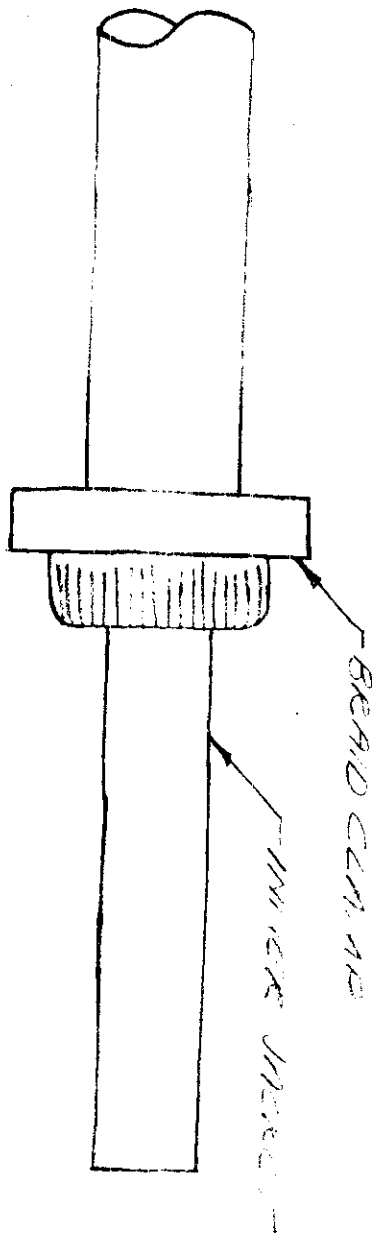
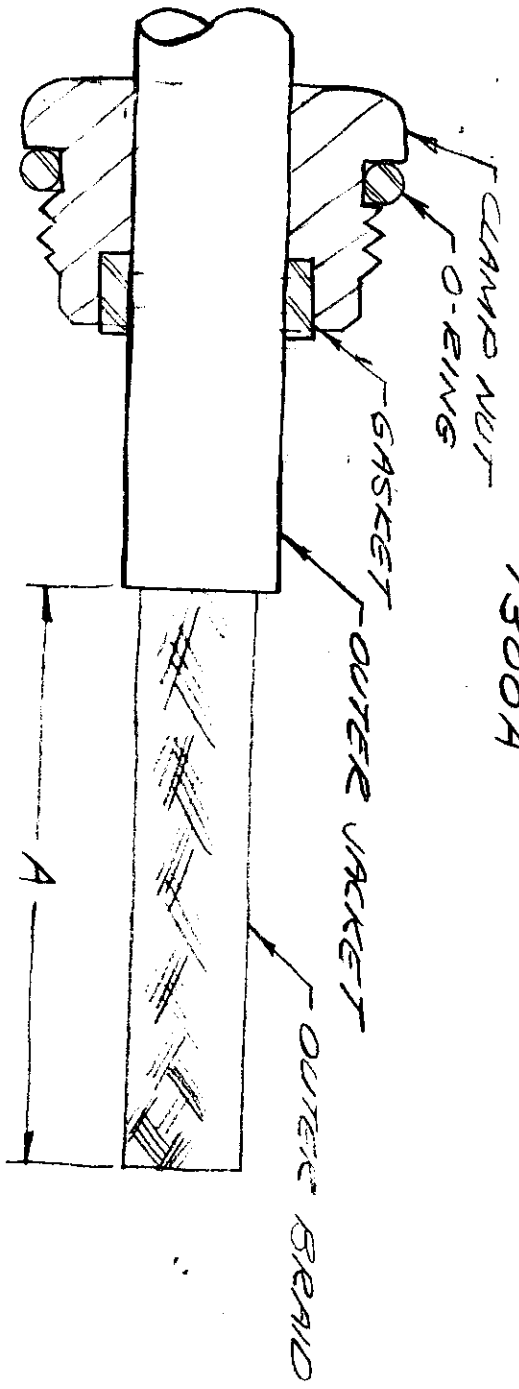
TRIM CODE CHART

CODE	A				B				C				D				
	IN	MM	IN	MM	IN	MM	IN	MM	IN	MM	IN	MM	IN	MM	IN	MM	
1303	.65	17.53	.096	2.44	.166	4.22	.141	3.58									



CP 13004

CHABLING PROCEDURES  
13004



APPROX. FITTING DIMENSIONS  
FOR REFERENCE ONLY  
NOT TO SCALE

CABLING PROCEDURE 1300

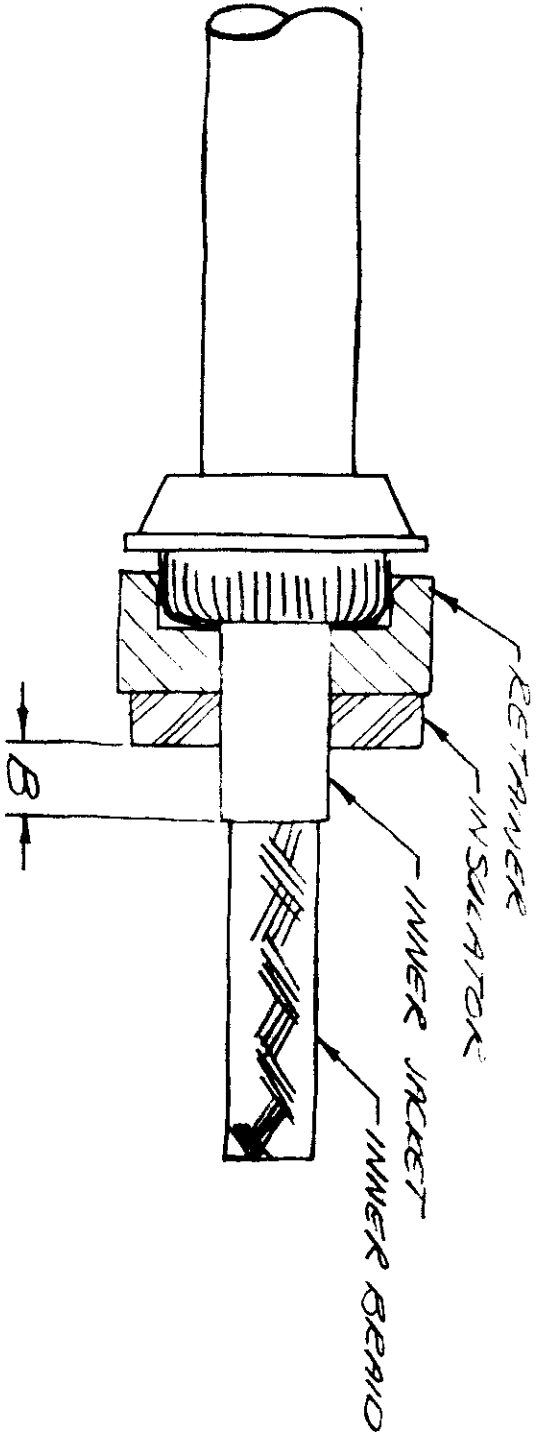
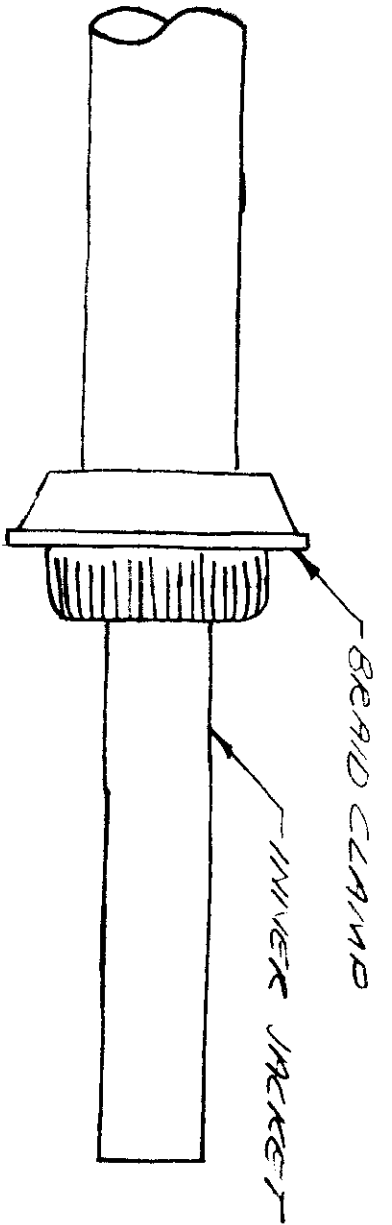
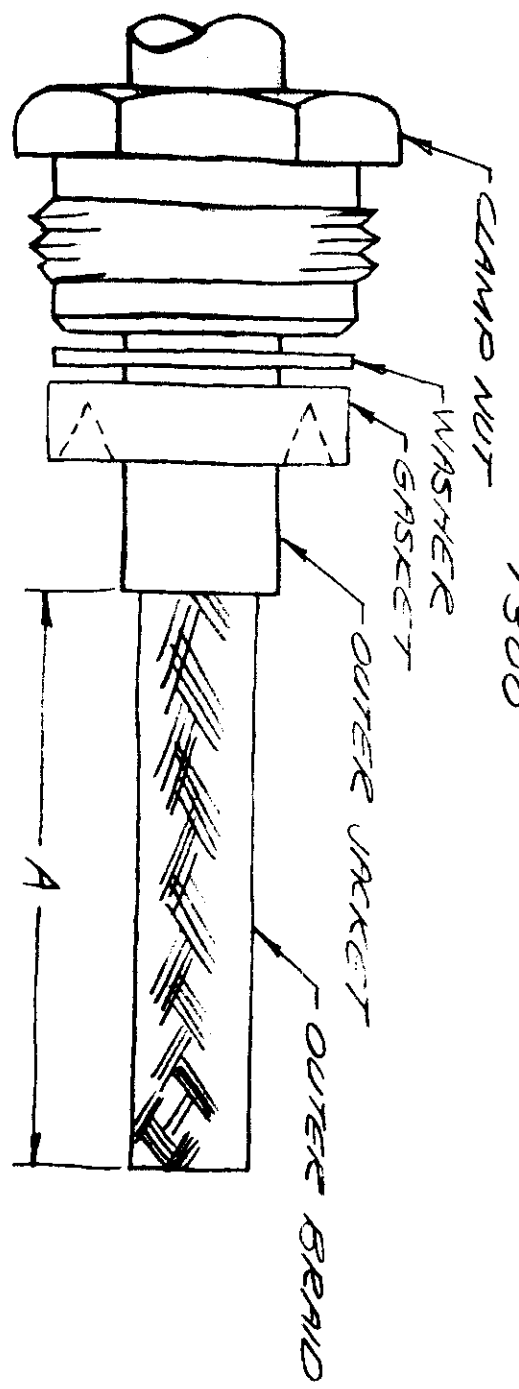
1. CUT CABLE END SQUARE, PLACE CLAMP NUT, WASHER AND GASKET OVER JACKET. REMOVE OUTER JACKET TO DIMENSION "A".
2. PLACE BRAID CLAMP OVER OUTER BRAID AGAINST JACKET CUT. COMB OUT BRAID AND FOLD BACK OVER BRAID CLAMP, TRIM IN USUAL MANNER.
3. ASSEMBLE RETAINER AND INSULATOR OVER INNER JACKET. REMOVE INNER JACKET TO DIMENSION "B".
4. PLACE BRAID CLAMP OVER INNER BRAID AGAINST INNER JACKET CUT. COMB OUT BRAID AND FOLD BACK OVER BRAID CLAMP, TRIM EVEN WITH BASE OF BRAID CLAMP.
5. PLACE WASHER OVER DIELECTRIC AGAINST BRAID AND TRIM DIELECTRIC TO DIMENSION "C" AND CENTER CONDUCTOR TO DIMENSION "D".
6. SOLDER CENTER CONTACT TO CENTER CONDUCTOR.
7. ASSEMBLE INNER INSULATOR, CONTACT AND OUTER INSULATOR, THEN INSERT INTO BODY. SLIDE BACK END PARTS FORWARD, THREAD ASSEMBLY INTO CONNECTOR BODY AND LOCK SECURELY.

CODE	A	B	C	D	
1301	1 1/16	.096	.210	3/32	1965-5
1302	1 1/16	.125	.214	.080	R&W 1-5-35 1955-1-9
1303	N/A	.096	.160	.144	1955-29

**KINGS ELECTRONICS CO., INC.**

40 MARLEDALE ROAD  
TUCKAHOE, NEW YORK 10707

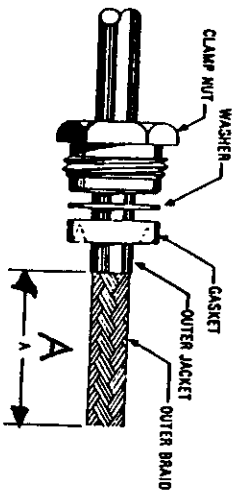
CABLING PROCEDURE  
1300



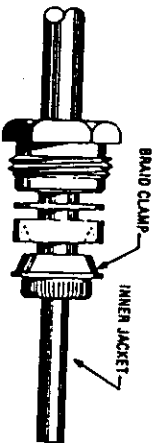
KINGS ELECTRONICS CO., Inc,  
40 MARBLEDALE ROAD  
TUCCAHOE 7, N. Y.

# CABLING PROCEDURE SKININGS

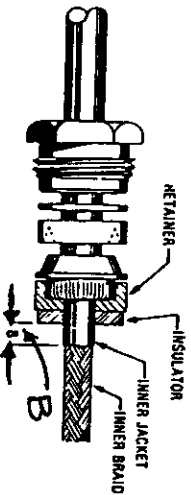
## CP-1300



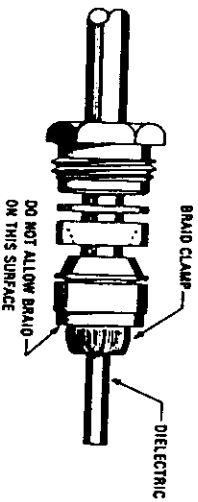
1. Cut cable end square. Slide clamp nut, washer and gasket over jacket. Remove outer jacket to dimension "A".



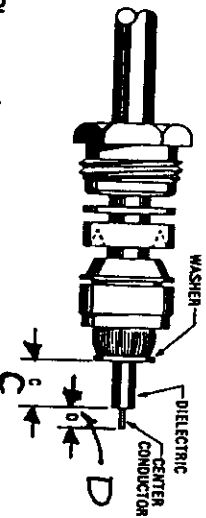
2. Place braid clamp over outer braid and against jacket cut. Comb out braid and fold back over braid clamp. Trim as shown.



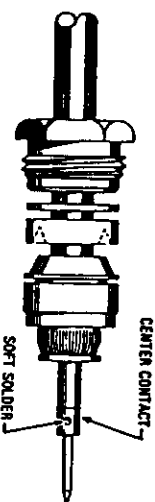
3. Assemble retainer and insulator over inner jacket. Remove inner jacket to dimension "B".



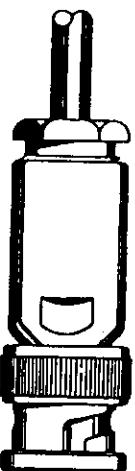
4. Place braid clamp over inner braid and against inner jacket cut. Comb out braid and fold back over braid clamp. Trim even with base of braid clamp.



5. Place washer over dielectric against braid. Trim dielectric to dimension "C" and center conductor to dimension "D".



6. Solder center contact to center conductor.



7. Assemble inner insulator, contact and outer insulator, then insert into body. Slide back end parts forward. Thread assembly into connector body and lock securely.

TRIM CODE CHART

CODE	A	B	C	D
1301	.69	.096	.210	.094
1302	.69	.125	.214	.080
1303	.69	.096	.166	.141

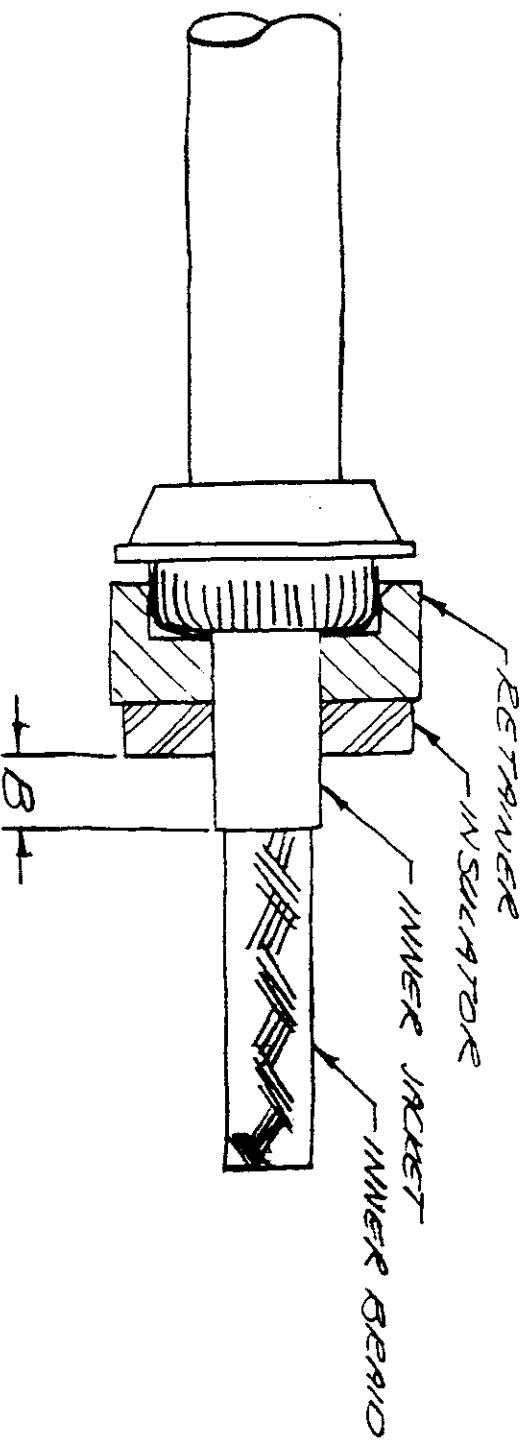
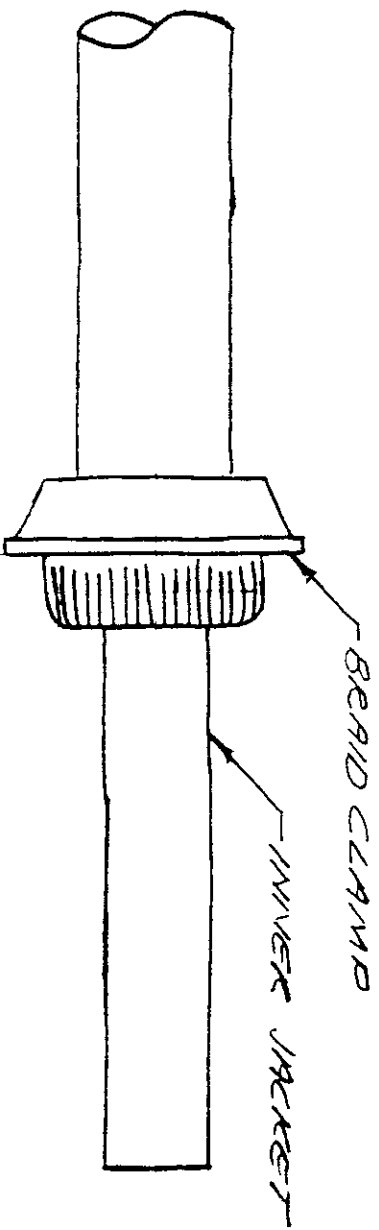
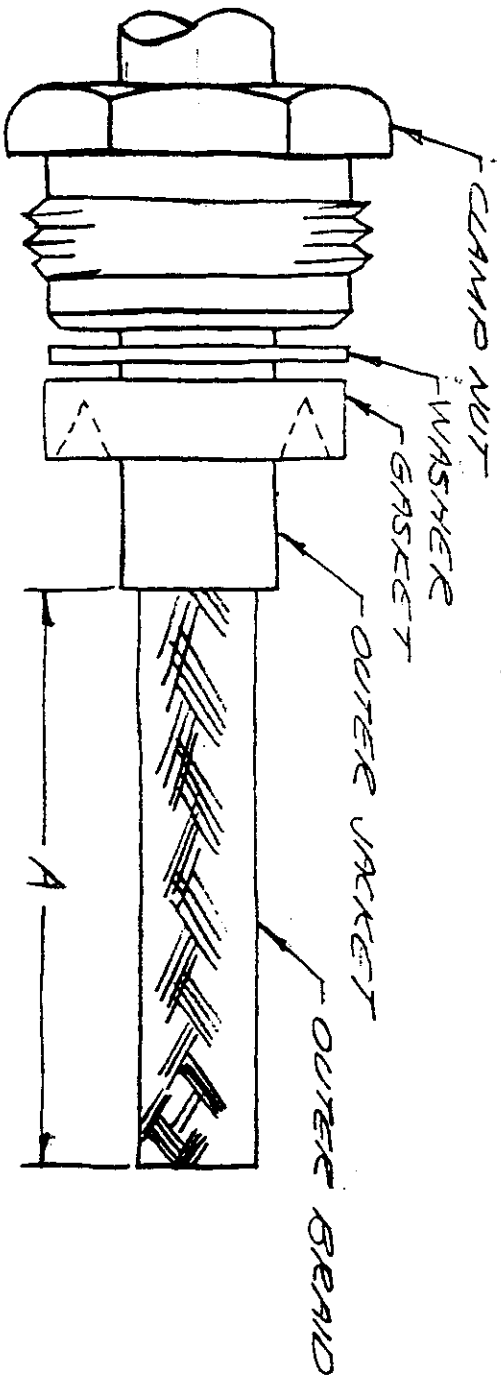
CABLING PROCEDURE 1300

1. CUT CABLE END SQUARE, PLACE CLAMP NUT, WASHER AND GASKET OVER JACKET. REMOVE OUTER JACKET TO DIMENSION "A".
2. PLACE BRAID CLAMP OVER OUTER BRAID AGAINST JACKET CUT. COMB OUT BRAID AND FOLD BACK OVER BRAID CLAMP, TRIM IN USUAL MANNER.
3. ASSEMBLE RETAINER AND INSULATOR OVER INNER JACKET. REMOVE INNER JACKET TO DIMENSION "B".
4. PLACE BRAID CLAMP OVER INNER BRAID AGAINST INNER JACKET CUT. COMB OUT BRAID AND FOLD BACK OVER BRAID CLAMP, TRIM EVEN WITH BASE OF BRAID CLAMP.
5. PLACE WASHER OVER DIELECTRIC AGAINST BRAID AND TRIM DIELECTRIC TO DIMENSION "C" AND CENTER CONDUCTOR TO DIMENSION "D".
6. SOLDER CENTER CONTACT TO CENTER CONDUCTOR.
7. ASSEMBLE INNER INSULATOR, CONTACT AND OUTER INSULATOR, THEN INSERT INTO BODY. SLIDE BACK END PARTS FORWARD, THREAD ASSEMBLY INTO CONNECTOR BODY AND LOCK SECURELY.

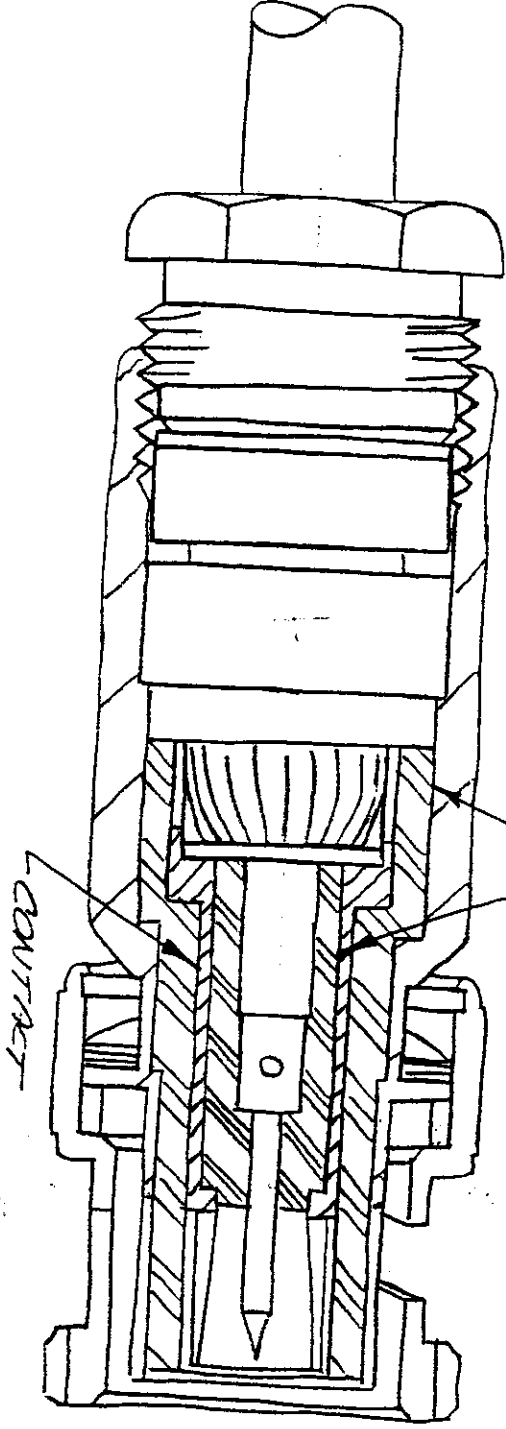
CODE	A	B	C	D
1301	11/16	.096	.210	3/32



CABLING PROCEDURE  
1301



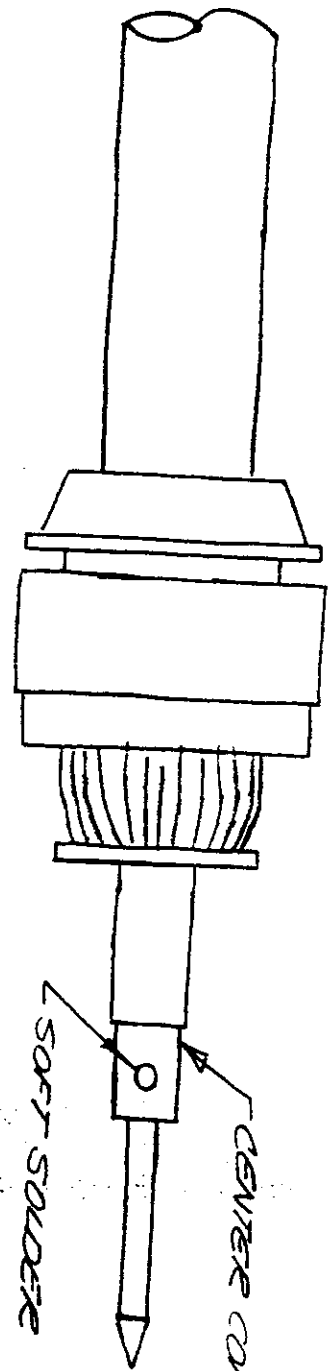
KINGS ELECTRONICS CO., Inc.  
40 MARBLEDALE ROAD  
TUCKAHOE 7, N. Y.



OUTER INSULATOR

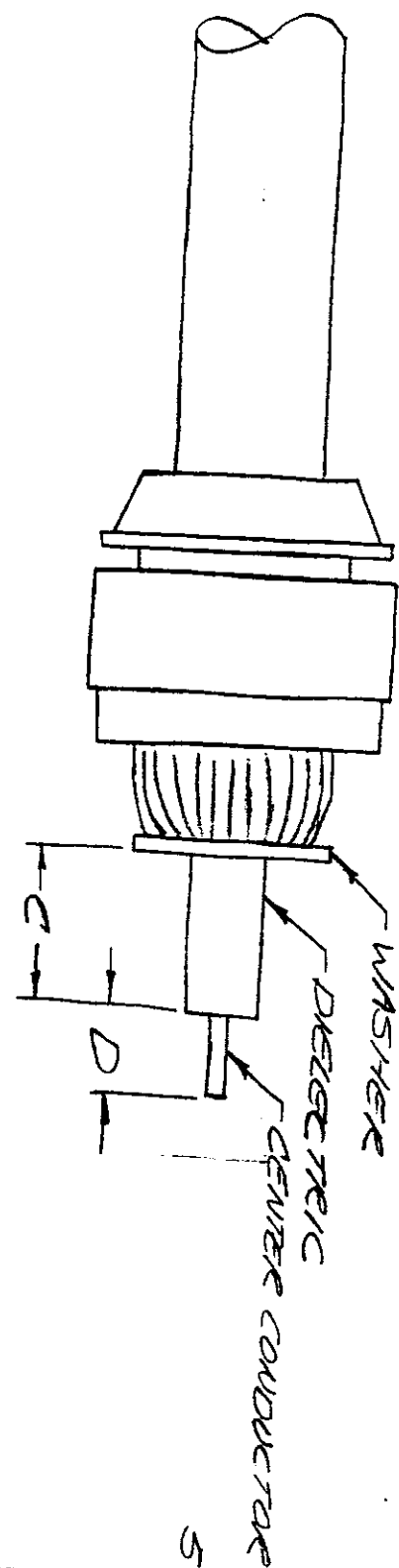
INNER INSULATOR

CONTACT



SOFT SOLDER

CENTER CONTACT



WASHER

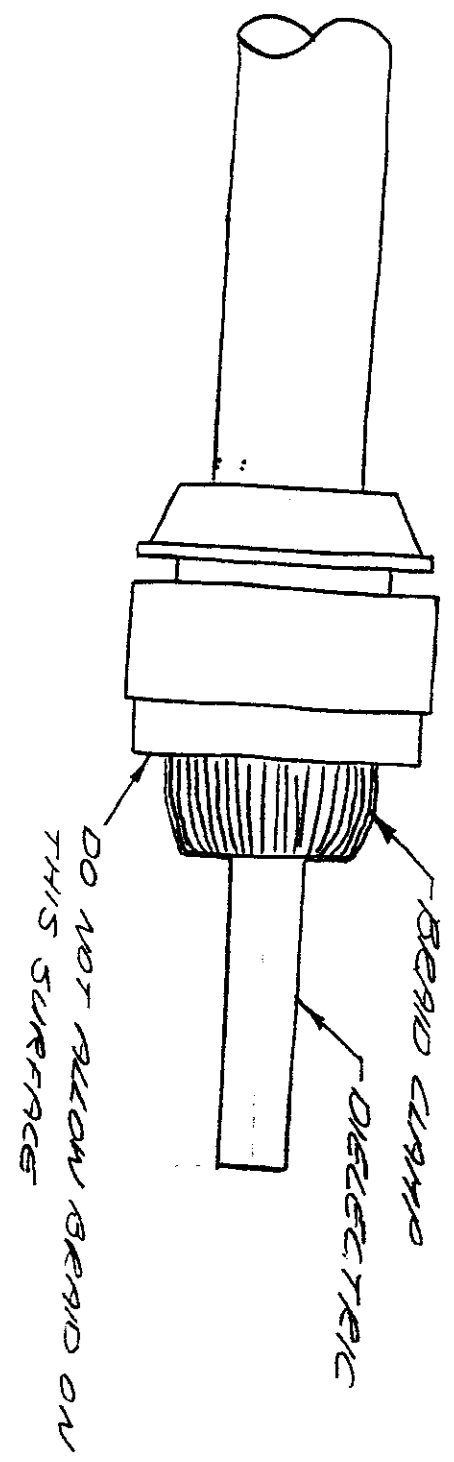
DIELECTRIC

CENTER CONDUCTOR

C

D

5



DO NOT ALLOW BRAID ON THIS SURFACE

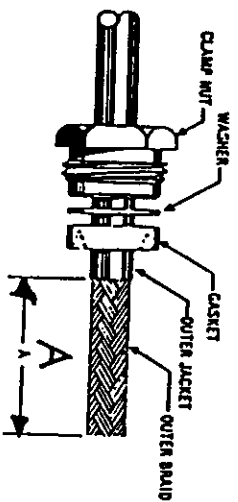
BRAID CLAMP

DIELECTRIC

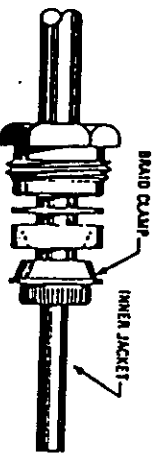
4

# CABLING PROCEDURE SKINING

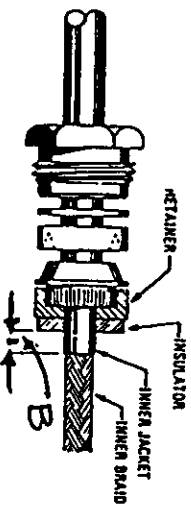
CP-1300



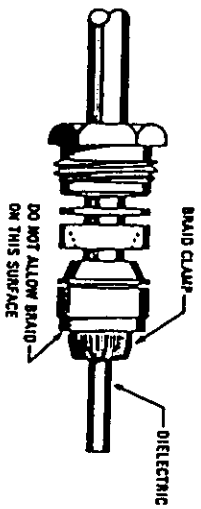
1. Cut cable end square. Slide clamp nut, washer and gasket over jacket. Remove outer jacket to dimension "A".



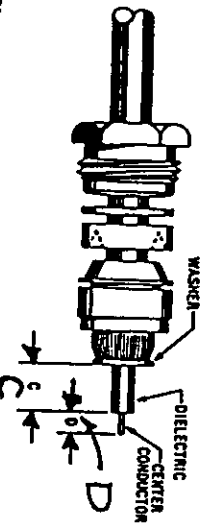
2. Place braid clamp over outer braid and against jacket cut. Comb out braid and fold back over braid clamp. Trim as shown.



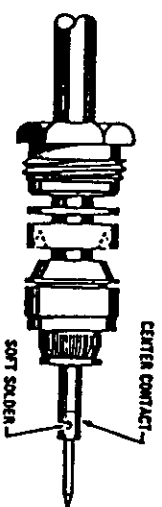
3. Assemble retainer and insulator over inner jacket. Remove inner jacket to dimension "B".



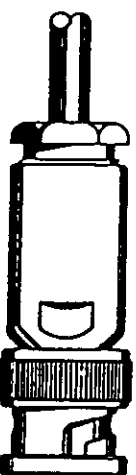
4. Place braid clamp over inner braid and against inner jacket cut. Comb out braid and fold back over braid clamp. Trim even with base of braid clamp.



5. Place washer over dielectric against braid. Trim dielectric to dimension "C" and center conductor to dimension "D".



6. Solder center contact to center conductor.



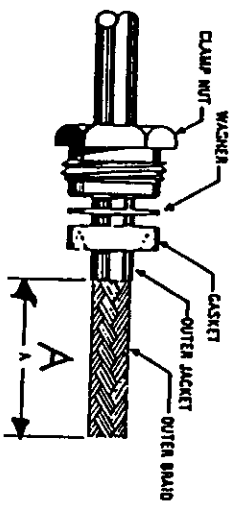
7. Assemble inner insulator, contact and outer insulator, then insert into body. Slide back end parts forward. Thread assembly into connector body and lock securely.

TRIM CODE CHART

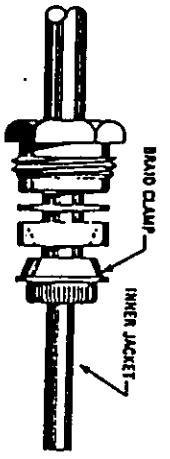
CODE	A	B	C	D
1301	.69	.096	.210	.094
1302	.69	.125	.214	.080
1303	.69	.096	.166	.141
1307	.69	.096	.108	.194

# CABLING PROCEDURE SKINING

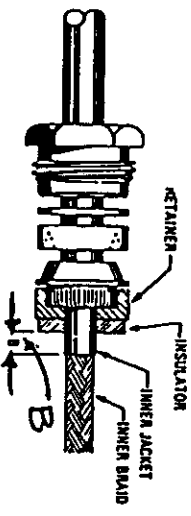
## CP-1300



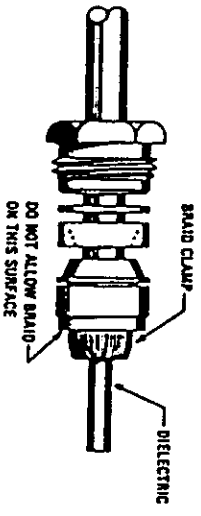
1. Cut cable end square. Slide clamp nut, washer and gasket over jacket. Remove outer jacket to dimension "A".



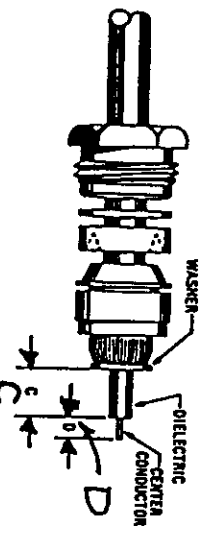
2. Place braid clamp over outer braid and against jacket cut. Comb out braid and fold back over braid clamp. Trim as shown.



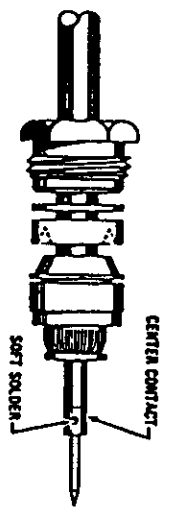
3. Assemble retainer and insulator over inner jacket. Remove inner jacket to dimension "B".



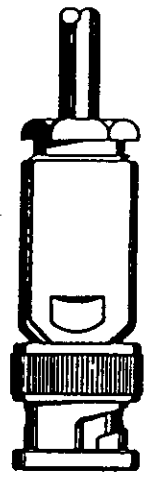
4. Place braid clamp over inner braid and against inner jacket cut. Comb out braid and fold back over braid clamp. Trim even with base of braid clamp.



5. Place washer over dielectric against braid. Trim dielectric to dimension "C" and center conductor to dimension "D".



6. Solder center contact to center conductor.

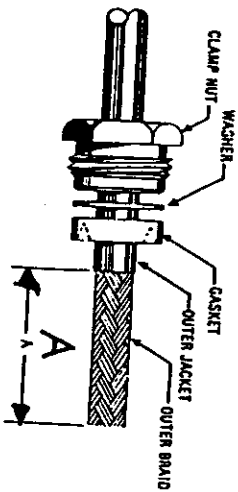


7. Assemble inner insulator, contact and outer insulator, then insert into body. Slide back end parts forward. Thread assembly into connector body and lock securely.

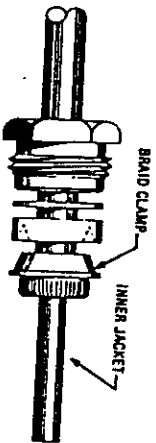
TRIM CODE CHART				
CODE	A	B	C	D
1301	.69	.096	.210	.094
1302	.69	.125	.214	.080
1303	.69	.096	.166	.14
1307	.69	.096	.108	.194

# CABLING PROCEDURE SKINING

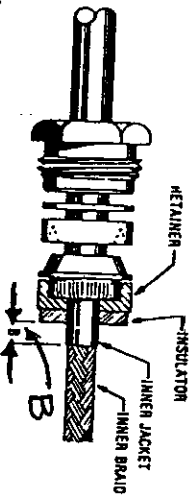
## CP-1300



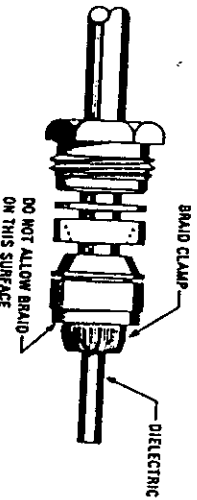
1. Cut cable end square. Slide clamp nut, washer and gasket over jacket. Remove outer jacket to dimension "A".



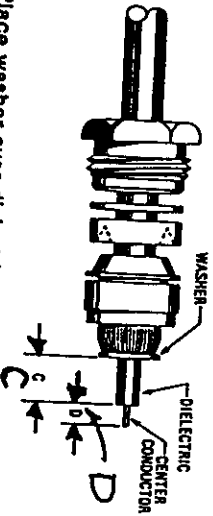
2. Place braid clamp over outer braid and against jacket cut. Comb out braid and fold back over braid clamp. Trim as shown.



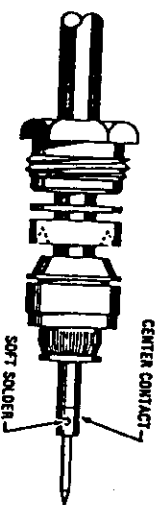
3. Assemble retainer and insulator over inner jacket. Remove inner jacket to dimension "B".



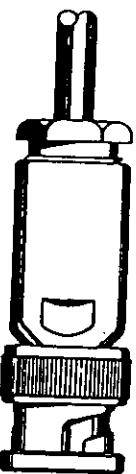
4. Place braid clamp over inner braid and against inner jacket cut. Comb out braid and fold back over braid clamp. Trim even with base of braid clamp.



5. Place washer over dielectric against braid. Trim dielectric to dimension "C" and center conductor to dimension "D".



6. Solder center contact to center conductor.



7. Assemble inner insulator, contact and outer insulator, then insert into body. Slide back end parts forward. Thread assembly into connector body and lock securely.

TRIM CODE CHART

CODE	A	B	C	D
1301	.69	.096	.210	.094

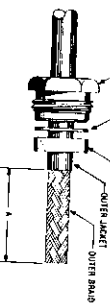
# CABLING PROCEDURE

# SKINGS

CP-1300 / CP-1300A / CP-2400

## CP-1300

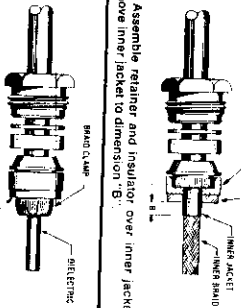
1. Cut cable end square. Slide clamp nut, washer and gasket over jacket. Remove outer jacket to dimension "A".



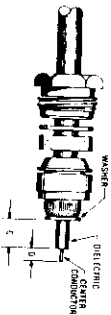
2. Place braid clamp over outer braid and against jacket cut. Comb out braid and fold back over braid clamp. Trim as shown.



3. Assemble retainer and insulator over inner jacket. Remove inner jacket to dimension "B".



4. Place braid clamp over inner braid and against inner jacket cut. Comb out braid and fold back over braid clamp. Trim even with base of braid clamp.



5. Place washer over dielectric against braid. Trim dielectric to dimension "C" and center conductor to dimension "D".



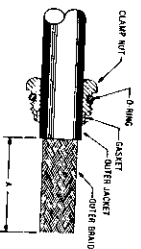
6. Solder center contact to center conductor.



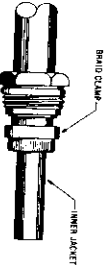
7. Assemble inner insulator, contact and outer insulator, then insert into body. Slide back end parts forward. Thread assembly into connector body and lock securely.

## CP-1300A

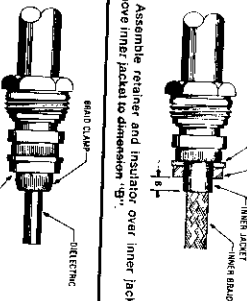
1. Cut cable end square. Assemble O-ring. Slide clamp nut and gasket over jacket. Remove outer jacket to dimension "A".



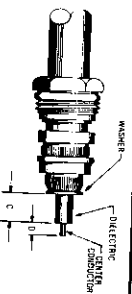
2. Place braid clamp over outer braid and against jacket cut. Comb out braid and fold back over braid clamp. Trim as shown.



3. Assemble retainer and insulator over inner jacket. Remove inner jacket to dimension "B".



4. Place braid clamp over inner braid and against inner jacket cut. Comb out braid and fold back over braid clamp. Trim even with base of braid clamp.



5. Place washer over dielectric against braid. Trim dielectric to dimension "C" and center conductor to dimension "D".



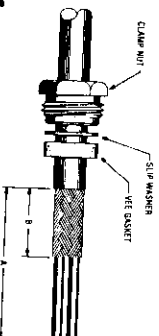
6. Solder center contact to center conductor.



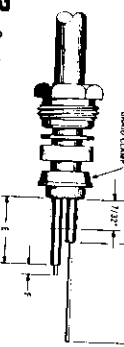
7. Assemble inner insulator, contact and outer insulator, then insert into body. Slide back and parts forward. Thread assembly into connector body and lock securely.

## CP-2400

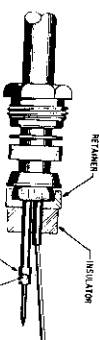
1. Cut cable end square. Slide clamp nut, slip washer and gasket over jacket. Trim jacket and outer braid to dimensions "A" and "B" respectively.



2. Comb out braid. Place braid clamp over braid and against jacket cut. Fold braid back over braid clamp and trim as shown. Trim dielectrics, inner conductors to trim as indicated. \*For cable with woven cloth braid.



3. Assemble retainer and insulator. Soft solder center contact.



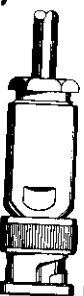
4. Insert assembly into inner insulator with remaining conductor extended through slot.



5. Assemble intermediate contact against insulator. Wrap remaining conductor, lightly around intermediate contact and soft solder.



6. Assemble outer insulator over intermediate contact. Thread assy. into connector, and lock securely. \*Vee" gasket must be split by braid clamp.



TRIM CODE CHART				
CODE	A	B	C	D
1301	.69	.096	.210	.094
1302	.69	.125	.214	.080
1303	.69	.096	.166	.141

TRIM CODE CHART				
CODE	A	B	C	D
1301A	11/16	.096	.210	3/32

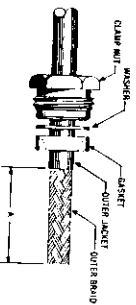
TRIM CODE CHART						
CODE	A	B	C	D	E	F
2401	1-7/8	1/2	5/16			
	1-1/2	31/64	5/64			

# CABLING PROCEDURE

# SKINGS

CP-1300 / CP-1300A / CP-2400

## CP-1300



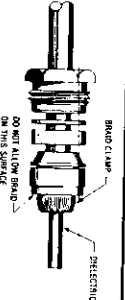
1. Cut cable end square. Slide clamp nut, washer and gasket over jacket. Remove outer jacket to dimension "A".



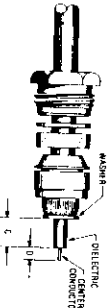
2. Place braid clamp over outer braid and against jacket cut. Comb out braid and fold back over braid clamp. Trim as shown.



3. Assemble retainer and insulator over inner jacket. Remove inner jacket to dimension "B".



4. Place braid clamp over inner braid and against inner jacket cut. Comb out braid and fold back over braid clamp. Trim even with base of braid clamp.



5. Place washer over dielectric against braid. Trim dielectric to dimension "C" and center conductor to dimension "D".



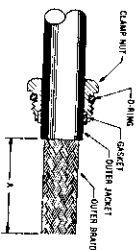
6. Solder center contact to center conductor.



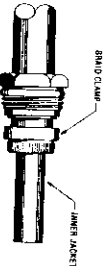
7. Assemble inner insulator, contact and outer insulator, then insert into body. Slide base and parts forward. Thread assembly into connector body and lock securely.

TRIM CODE CHART				
CODE	A	B	C	D
1301	.69	.096	.210	.094
1302	.69	.125	.214	.080
1303	.69	.096	.166	.141

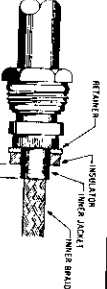
## CP-1300A



1. Cut cable end square. Assemble O-ring, slide clamp nut and gasket over jacket. Remove outer jacket to dimension "A".



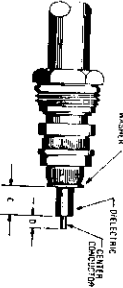
2. Place braid clamp over outer braid and against jacket cut. Comb out braid and fold back over braid clamp. Trim as shown.



3. Assemble retainer and insulator over inner jacket. Remove inner jacket to dimension "B".



4. Place braid clamp over inner braid and against inner jacket cut. Comb out braid and fold back over braid clamp. Trim even with base of braid clamp.



5. Place washer over dielectric against braid. Trim dielectric to dimension "C" and center conductor to dimension "D".



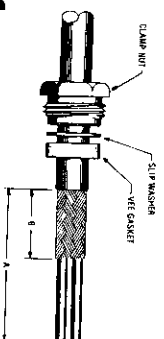
6. Solder center contact to center conductor.



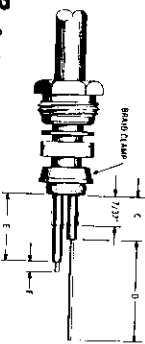
7. Assemble inner insulator, contact and outer insulator, then insert into body. Slide base and parts forward. Thread assembly into connector body and lock securely.

TRIM CODE CHART				
CODE	A	B	C	D
1301A	11/16	.096	.210	3/32

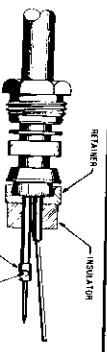
## CP-2400



1. Cut cable end square. Slide clamp nut, slip washer and gasket over jacket. Trim outer jacket and outer braid to dimensions "A" and "B" respectively.



2. Comb out braid. Place braid clamp over braid and against jacket cut. Fold braid back over braid and trim as shown. Trim dielectrics and inner conductors to dimensions indicated. For cable with woven cloth layer.



3. Assemble retainer and insulator. Soft solder center contact.



4. Insert assembly into inner insulator with remaining conductor extended through slot.



5. Assemble intermediate contact against insulator. Wrap remaining conductor lightly around intermediate contact and soft solder.



6. Assemble outer insulator over intermediate contact. Thread assembly into connector, and lock securely. "Vee" gasket must be split by braid clamp.

TRIM CODE CHART						
CODE	A	B	C	D	E	F
2401	1-7/8	1/2	5/16			
				1-1/2	31/64	5/64

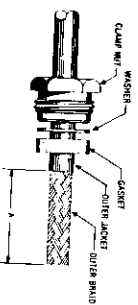


# CABLING PROCEDURE

# SKINGS

CP-1300 / CP-1300A / CP-2400

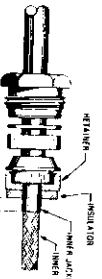
## CP-1300



1. Cut cable end square. Slide clamp nut, washer and gasket over jacket. Remove outer jacket to dimension "A".



2. Place braid clamp over outer braid and against jacket cut. Comb out braid and fold back over braid clamp. Trim as shown.



3. Assemble retainer and insulator over inner jacket. Remove inner jacket to dimension "B".



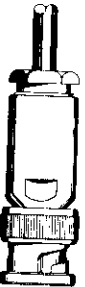
4. Place braid clamp over inner braid and against inner jacket cut. Comb out braid and fold back over braid clamp. Trim even with base of braid clamp.



5. Place washer over dielectric against braid. Trim dielectric to dimension "C", and center conductor to dimension "D".



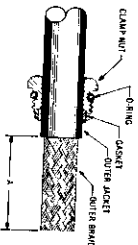
6. Solder center contact to center conductor.



7. Assemble inner insulator, contact and outer insulator, then insert into body. Slide back end pins forward. Thread assembly into connector body and lock securely.

TRIM CODE CHART				
CODE	A	B	C	D
1301	.69	.096	.210	.094
1302	.69	.125	.214	.080
1303	.69	.096	.166	.141

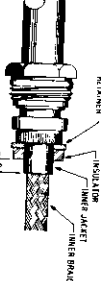
## CP-1300A



1. Cut cable end square. Assemble O-ring. Slide clamp nut and gasket over jacket. Remove outer jacket to dimension "A".



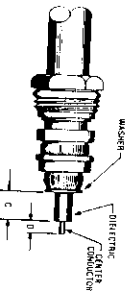
2. Place braid clamp over outer braid and against jacket cut. Comb out braid and fold back over braid clamp. Trim as shown.



3. Assemble retainer and insulator over inner jacket. Remove inner jacket to dimension "B".



4. Place braid clamp over inner braid and against inner jacket cut. Comb out braid and fold back over braid clamp. Trim even with base of braid clamp.



5. Place washer over dielectric against braid. Trim dielectric to dimension "C", and center conductor to dimension "D".



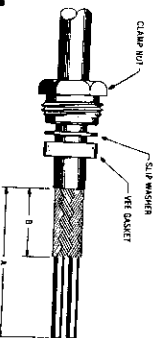
6. Solder center contact to center conductor.



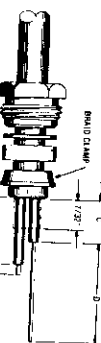
7. Assemble inner insulator, contact and outer insulator, then insert into body. Slide back end pins forward. Thread assembly into connector body and lock securely.

TRIM CODE CHART				
CODE	A	B	C	D
1301A	11/16	.096	.210	3/32

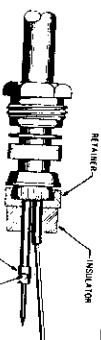
## CP-2400



1. Cut cable end square. Slide clamp nut, slip washer and gasket over jacket. Trim jacket and outer braid to dimensions "A", "B", and "C" respectively.



2. Comb out braid. Place braid clamp over braid and against inner cut. Slide braid back over braid clamp and trim as shown. Trim inner braid and other conductors to dimensions indicated. \*For cable with woven cloth layer.



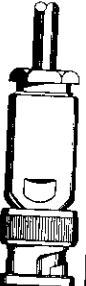
3. Assemble retainer and insulator. Soft solder center contact.



4. Insert assembly into inner insulator with remaining conductor extended through slot.



5. Assemble intermediate contact against insulator. Wrap remaining conductor lightly around intermediate contact and soft solder.



6. Assemble outer insulator over intermediate contact. Thread assembly into connector, and lock securely. \*Yee gasket must be split by braid clamp.

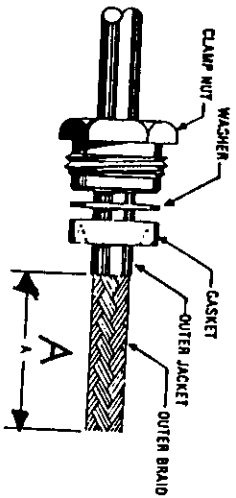
TRIM CODE CHART						
CODE	A	B	C	D	E	F
2401	1-7/8	1/2	5/16			
				1-1/2	31/64	5/64



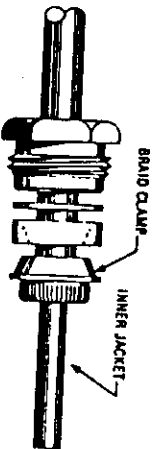
# CABLING PROCEDURE SKININGS

MASTER

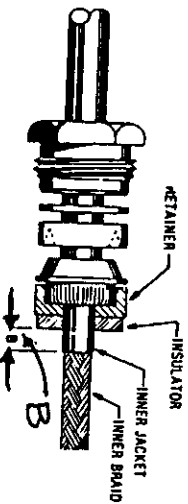
CP-1300



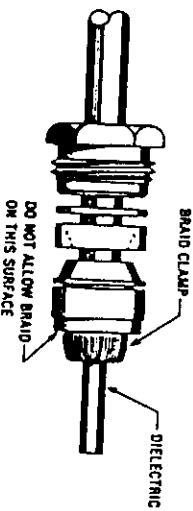
1. Cut cable end square. Slide clamp nut, washer and gasket over jacket. Remove outer jacket to dimension "A".



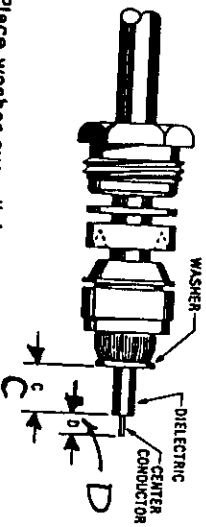
2. Place braid clamp over outer braid and against jacket cut. Comb out braid and fold back over braid clamp. Trim as shown.



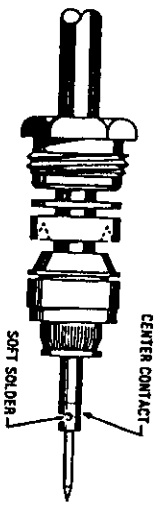
3. Assemble retainer and insulator over inner jacket. Remove inner jacket to dimension "B".



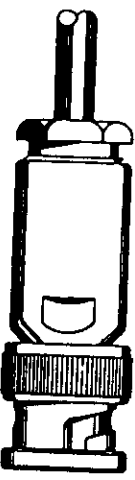
4. Place braid clamp over inner braid and against inner jacket cut. Comb out braid and fold back over braid clamp. Trim even with base of braid clamp.



5. Place washer over dielectric against braid. Trim dielectric to dimension "C" and center conductor to dimension "D".



6. Solder center contact to center conductor.



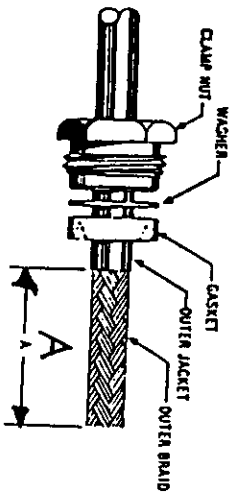
7. Assemble inner insulator, contact and outer insulator, then insert into body. Slide back end parts forward. Thread assembly into connector body and lock securely.

TRIM CODE CHART

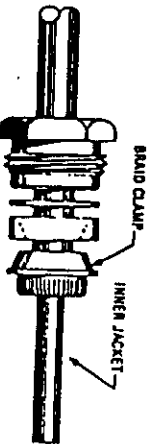
CODE	A	B	C	D
1301	.69	.096	.210	.094
1302	.69	.125	.214	.080
1303	.69	.096	.166	.141
1307	.69	.096	.108	.194

# CABLING PROCEDURE SKININGS

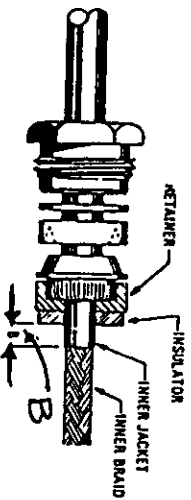
## CP-1300



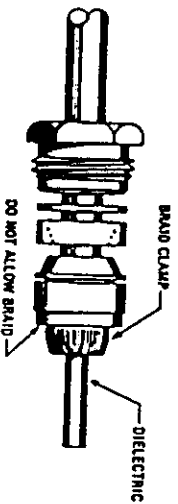
1. Cut cable end square. Slide clamp nut, washer and gasket over jacket. Remove outer jacket to dimension "A".



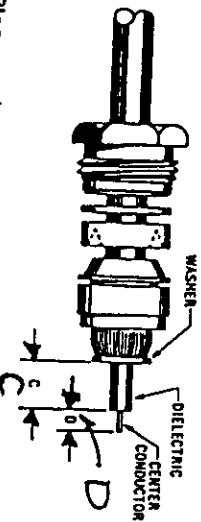
2. Place braid clamp over outer braid and against jacket cut. Comb out braid and fold back over braid clamp. Trim as shown.



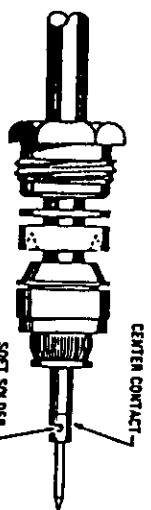
3. Assemble retainer and insulator over inner jacket. Remove inner jacket to dimension "B".



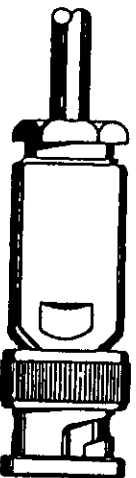
4. Place braid clamp over inner braid and against inner jacket cut. Comb out braid and fold back over braid clamp. Trim even with base of braid clamp.



5. Place washer over dielectric against braid. Trim dielectric to dimension "C" and center conductor to dimension "D".



6. Solder center contact to center conductor.

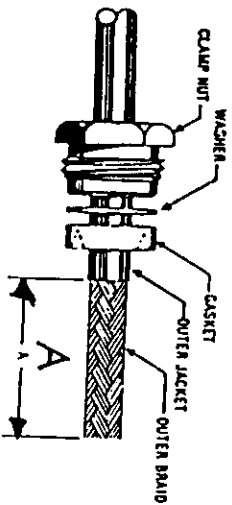


7. Assemble inner insulator, contact and outer insulator, then insert into body. Slide back end parts forward. Thread assembly into connector body and lock securely.

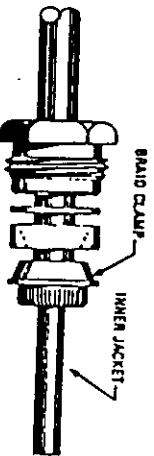
TRIM CODE CHART				
CODE	A	B	C	D
1301	.69	.096	.210	.094
1302	.69	.125	.214	.080
1303	.69	.096	.166	.141
1307	.69	.096	.108	.194

# CABLING PROCEDURE SKININGS

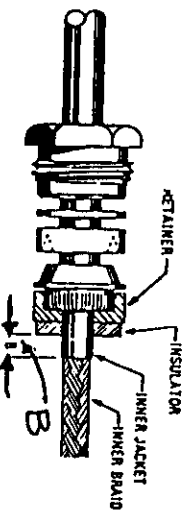
## CP-1300



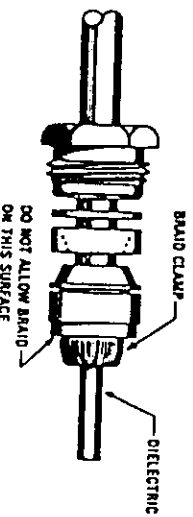
1. Cut cable end square. Slide clamp nut, washer and gasket over jacket. Remove outer jacket to dimension "A".



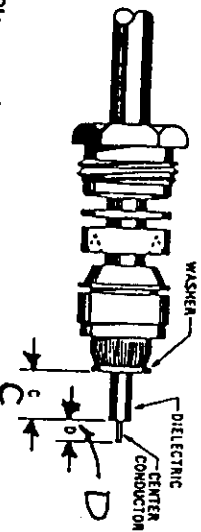
2. Place braid clamp over outer braid and against jacket cut. Comb out braid and fold back over braid clamp. Trim as shown.



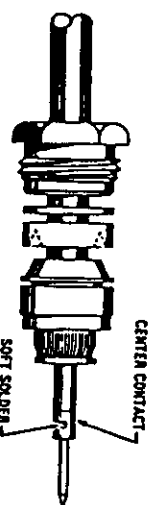
3. Assemble retainer and insulator over inner jacket. Remove inner jacket to dimension "B".



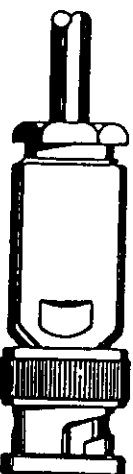
4. Place braid clamp over inner braid and against inner jacket cut. Comb out braid and fold back over braid clamp. Trim even with base of braid clamp.



5. Place washer over dielectric against braid. Trim dielectric to dimension "C" and center conductor to dimension "D".



6. Solder center contact to center conductor.



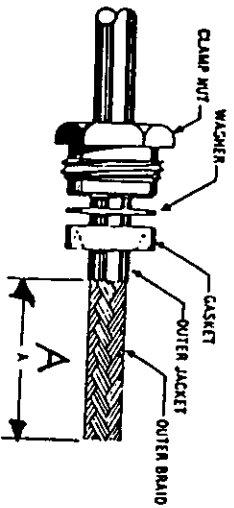
7. Assemble inner insulator, contact and outer insulator, then insert into body. Slide back end parts forward. Thread assembly into connector body and lock securely.

TRIM CODE CHART

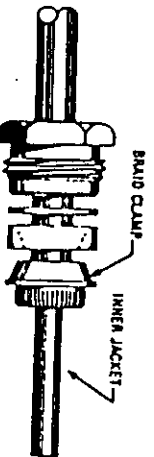
CODE	A	B	C	D
1301	.69	.096	.210	.094
1302	.69	.125	.214	.080
1303	.69	.096	.166	.141
1307	.69	.096	.108	.194

# CABLING PROCEDURE SKININGS

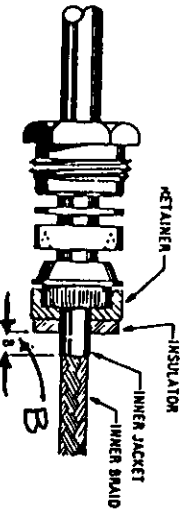
## CP-1300



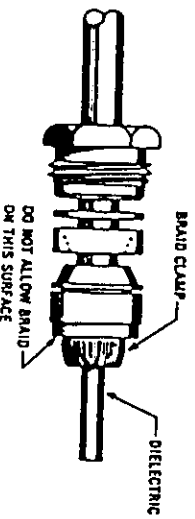
1. Cut cable end square. Slide clamp nut, washer and gasket over jacket. Remove outer jacket to dimension "A".



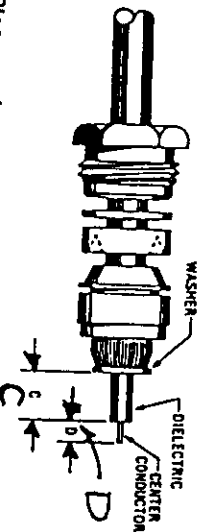
2. Place braid clamp over outer braid and against jacket cut. Comb out braid and fold back over braid clamp. Trim as shown.



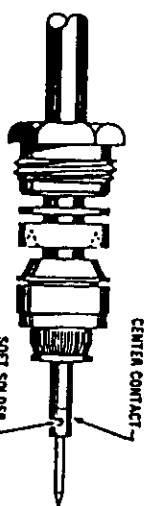
3. Assemble retainer and insulator over inner jacket. Remove inner jacket to dimension "B".



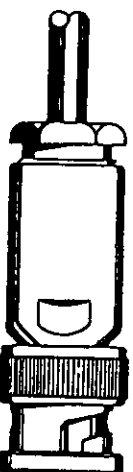
4. Place braid clamp over inner braid and against inner jacket cut. Comb out braid and fold back over braid clamp. Trim even with base of braid clamp.



5. Place washer over dielectric against braid. Trim dielectric to dimension "C" and center conductor to dimension "D".



6. Solder center contact to center conductor.



7. Assemble inner insulator, contact and outer insulator, then insert into body. Slide back end parts forward. Thread assembly into connector body and lock securely.

TRIM CODE CHART

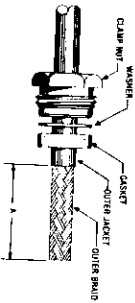
CODE	A	B	C	D
1301	.69	.096	.210	.09
1302	.69	.125	.214	.080
1303	.69	.096	.166	.141
1307	.69	.096	.108	.194

# CABLING PROCEDURE

# SKININGS

CP-1300 / CP-1300A / CP-2400

## CP-1300



1. Cut cable end square. Slide clamp nut, washer and gasket over jacket. Remove outer jacket to dimension "A".



2. Place braid clamp over outer braid and against jacket cut. Comb out braid and fold back over braid clamp. Trim as shown.



3. Assemble retainer and insulator over inner jacket. Remove inner jacket to dimension "B".



4. Place braid clamp over inner braid and against inner jacket cut. Comb out braid and fold back over braid clamp. Trim even with base of braid clamp.



5. Place washer over dielectric against braid. Trim dielectric to dimension "C" and center conductor to dimension "D".



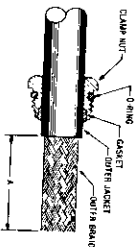
6. Solder center contact to center conductor.



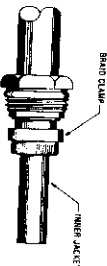
7. Assemble inner insulator, contact and outer insulator, then insert into body. Slide back end parts forward. Thread assembly into connector body and lock securely.

TRIM CODE CHART				
CODE	A	B	C	D
1301	.69	.096	.210	.094
1302	.69	.125	.214	.080
1303	.69	.096	.166	.141

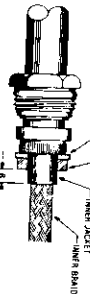
## CP-1300A



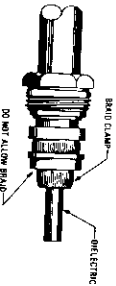
1. Cut cable end square. Assemble O-ring, slide clamp nut and gasket over jacket. Remove outer jacket to dimension "A".



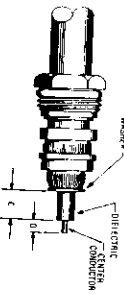
2. Place braid clamp over outer braid and against jacket cut. Comb out braid and fold back over braid clamp. Trim as shown.



3. Assemble retainer and insulator over inner jacket. Remove inner jacket to dimension "B".



4. Place braid clamp over inner braid and against inner jacket cut. Comb out braid and fold back over braid clamp. Trim even with base of braid clamp.



5. Place washer over dielectric against braid. Trim dielectric to dimension "C" and center conductor to dimension "D".



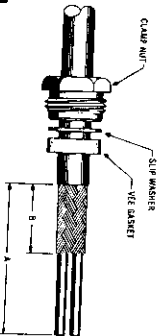
6. Solder center contact to center conductor.



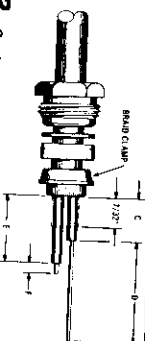
7. Assemble inner insulator, contact and outer insulator, then insert into body. Slide back end parts forward. Thread assembly into connector body and lock securely.

TRIM CODE CHART				
CODE	A	B	C	D
1301A	11/16	.096	.210	3/32

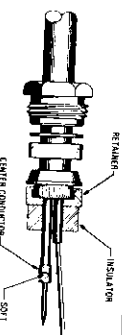
## CP-2400



1. Cut cable end square. Slide clamp nut, slip washer and gasket over jacket. Trim jacket and outer braid to dimensions "A" and "B" respectively.



2. Comb out braid. Place braid clamp over braid and against jacket cut. Fold braid back over braid clamp and trim as shown. Trim dielectrics and inner conductors to dimensions indicated. For cable with woven cloth layer.



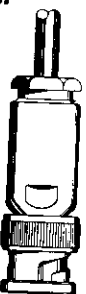
3. Assemble retainer and insulator. Soft solder center conductor.



4. Insert assembly into inner insulator with remaining conductor extended through slot.



5. Assemble intermediate contact against insulator. Wrap remaining conductor tightly around intermediate contact and soft solder.

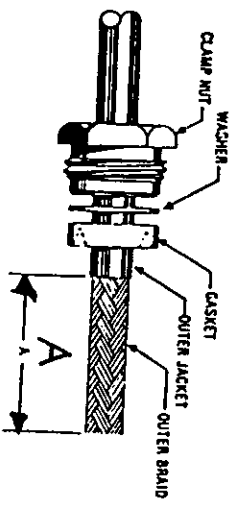


6. Assemble outer insulator over intermediate contact. Thread assembly into connector, and lock securely. "Vee" gasket must be split by braid clamp.

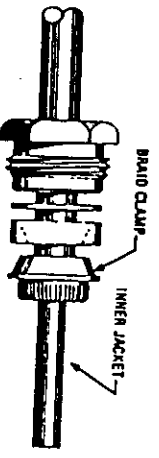
TRIM CODE CHART						
CODE	A	B	C	D	E	F
2401	1-7/8	1/2	5/16			
				D	E	F
	1-1/2	31/64	5/64			

# CABLING PROCEDURE SKININGS

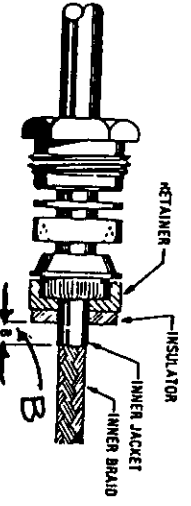
## CP-1300



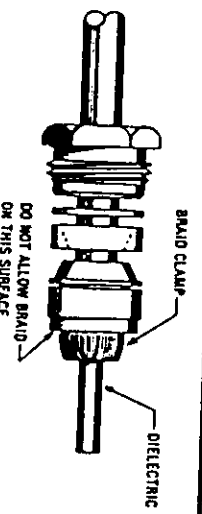
1. Cut cable end square. Slide clamp nut, washer and gasket over jacket. Remove outer jacket to dimension "A".



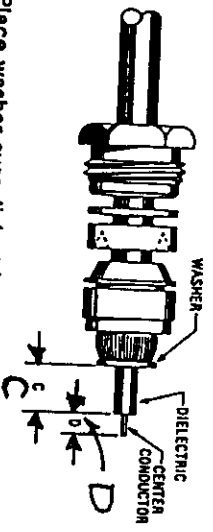
2. Place braid clamp over outer braid and against jacket cut. Comb out braid and fold back over braid clamp. Trim as shown.



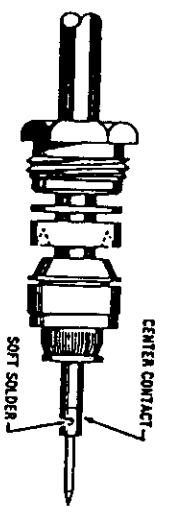
3. Assemble retainer and insulator over inner jacket. Remove inner jacket to dimension "B".



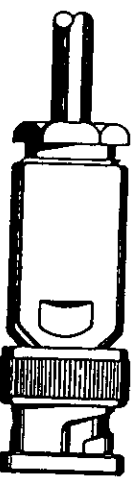
4. Place braid clamp over inner braid and against inner jacket cut. Comb out braid and fold back over braid clamp. Trim even with base of braid clamp.



5. Place washer over dielectric against braid. Trim dielectric to dimension "C" and center conductor to dimension "D".



6. Solder center contact to center conductor.



7. Assemble inner insulator, contact and outer insulator, then insert into body. Slide back end parts forward. Thread assembly into connector body and lock securely.

TRIM CODE CHART				
CODE	A	B	C	D
1301	.69	.096	.210	.094
1302	.69	.125	.214	.080
1303	.69	.096	.166	.141
1307	.69	.096	.108	.194