

STRUCTURES & UTILITIES

Backed by over a century of strand-making experience, Wire Rope Industries offers premium solutions to meet the diverse requirements of engineered structural support systems. Custom designed and tested to meet all industry standards, our systems are innovative and cost effective.

WRI is continuing to supply major structural projects globally, with focus on applications where our expertise and advanced wire coating technologies create value for our customers. We are also the main supplier of specialized strands to one of the largest power utilities in the world.



WIRE ROPE
INDUSTRIES

PAST PROJECTS

ROOF PROJECTS SUPPLIED BY WRI



» Georgia Dome, Atlanta, USA



» Montreal Olympic Stadium, Canada



» Nautica Amphitheatre, Cleveland, USA



» San Diego Convention Center, USA



» Aspen Music Center, Aspen, USA

BRIDGE PROJECTS SUPPLIED BY WRI



» Lion's Gate Bridge, Vancouver, Canada



» Barito Bridge, Indonesia



» Second Tacoma Narrows Bridge, Washington



» Billinghurst Bridge, Peru



» Triborough Bridge, New York, USA

BRIDGES AND ROOF SUPPORT

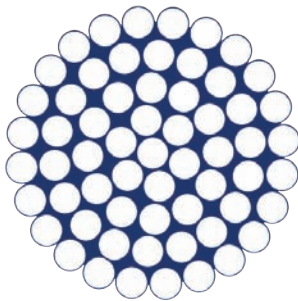
Our full line of class A, B or C Galvanized or Bezinal® coated structural strand and rope products is available in either PS 1000 (ASTM A-586 grade 1) or PS 1000UHS (ASTM A-586 grade 2) for your bridge and roof support requirements.

For Bridges:

- » Main Cable, Suspender, and Wind Stay products for suspension bridges
- » Stay Cables for smaller Cable-Stayed bridges
- » Cables can be supplied with WRI Strandcote® corrosion protectant for additional corrosion resistance.

For Roof Support Cables:

- » Full range of poured, socketed, or pressed end fittings are available to meet your project needs.
- » Cables that are in contact with roof fabric can be provided with a color-coordinated plastic jacket to reduce abrasion of the fabric.



Broadcasting and Power Transmission Towers

Our full line of class A, B or C Galvanized or Bezinal® coated structural strand and rope products is available in either PS 1000 (ASTM A-586 grade 1) or PS 1000UHS (ASTM A-586 grade 2) for guy systems and towers.

- » We have supplied high quality guying systems for some of the tallest towers in North America
- » We regularly supply replacement strands for major military communication towers
- » WRI is the primary supplier of tower support cables for Canada's largest utility company
- » For towers installed in hostile environments, Strandcote is available for additional corrosion protection.
- » We offer all sizes of 19 and 37-wire constructions for ACSR power transmission cables.

Other Applications

Galvanized structural strand is the ideal product for applications where high strength and low stretch is required. Pendant assemblies with standard or customized sockets are available for your large excavation equipment, ship loaders, stacker-reclaimers or other. We can also supply large guying systems for flare stacks.

ANTI-CORROSION SOLUTIONS

BEZINAL® 3000 COATINGS



Developed by our parent company Bekaert, world leader in wire technology, Bezinal® is the next generation of Zinc-Aluminum coating for high-carbon wires.

Bezinal coated ropes have been used by several of our flagship clients with exceptional results.

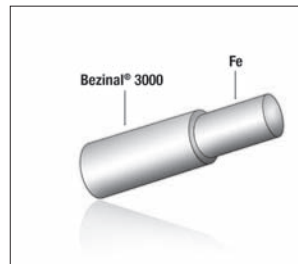
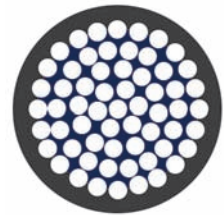
Benefits

- » Superior corrosion resistance for longer lifetime
- » Exposure up to 350°C leaves the coating intact
- » Cathodic protection
- » Active protection of cut ends
- » Sustained corrosion protection at welded points
- » Good formability
- » Withstands heavy deformations
- » Suitable for cycled fatigue loads

Bezinal® outperforms standard galvanized products by a least 3 to 1 (for the same coating weight) in many applications.

STRANDCOTE

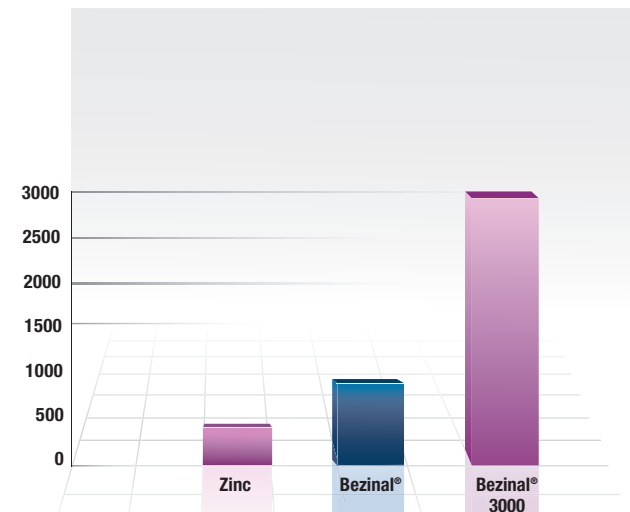
A revolutionary protective blocking compound, custom formulated for extending the anti-corrosion life of wire rope and strand and is available on request on any of our structural products. Strandcote is available for factory or field application and can be overcoated with pigmented top coats for color coordination.



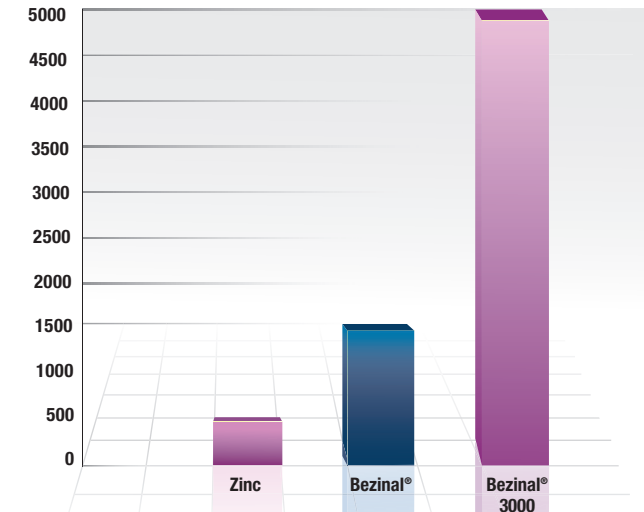
Salt Spray Performance

(hours exposure before appearance of 5% Dark Brown Rust (DBR));

Redrawn wires Bezinal® 3000
Class B according to EN-10244-2



Final coated wires Bezinal® 3000
Class A according to EN-10244-2



SERVICES

PRESTRETCHING AND PROOFLOADING

- » WRI is equipped with prestretching and proofloading facilities capable of handling up to 800,000 lbs tensile force.
- » Prestretching facilities include hydraulic grips at each end allowing unlimited lengths of finished assemblies.
- » Standard length accuracy of assemblies is $\pm 1/8$ " per 100 feet for rope or strand up to $\pm 1/2$ " per 1000 feet.

SOCKETING

- » WRI has facilities for socketing of product up to 6" diameter.
- » Our 40 foot high socketing stations ensure correct socket-to-strand alignment and uniform loading of all wires in even the largest diameter strands.
- » Standard socketing media is pure zinc or epoxy resin. Alternate media can be used to meet your project requirements.
- » Plastic jacketing of structural strand and rope up to 3-1/2" diameter is available.
- » Pigmentation is available to meet your project requirements. Check with us for your specific needs.

ELEGANT SERIES SOCKETS

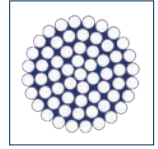
When functionality and appearance are important

- » A recessed pin allowing for cable assembly connections in limited space applications.
- » Smooth hot dipped galvanized finish for long term corrosion protection. 100% termination efficiency when attached to all grades of Performance Series Structural strands and wire ropes.
- » Smooth streamlined surface for an aesthetically more pleasing look, and better complementing the designer's vision.



PRODUCT SPECIFICATIONS

BREAKING LOAD TABLES - STRUCTURES & UTILITIES



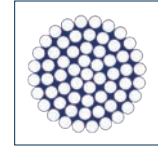
PS 1000 for Structures

Diameter Inches (mm)	GALVANIZED STRAND PS 1000 ASTM A-586 GRADE 1		GALVANIZED STRAND PS 1000UHS ASTM A-586 GRADE 2		GALVANIZED ROPE ASTM A-603	
	Min. Breaking Load-tons (kN)	Approx. Weight lbs/ft (kg/m)	Min. Breaking Load-tons (kN)	Approx. Weight lbs/ft (kg/m)	Min. Breaking Load-tons (kN)	Approx. Weight lbs/ft (kg/m)
1/2 (12.7)	15.0 (133)	0.52 (0.77)	17.3 (154)	0.52 (0.77)	11.5 (102)	0.42 (0.62)
9/16 (14.3)	19.0 (169)	0.66 (0.98)	21.9 (195)	0.66 (0.98)	14.5 (129)	0.53 (0.79)
5/8 (15.9)	24.0 (213)	0.82 (1.22)	27.6 (245)	0.82 (1.22)	18.0 (160)	0.65 (0.97)
11/16 (17.5)	29.0 (258)	0.99 (1.47)	33.4 (297)	0.99 (1.47)	21.5 (191)	0.79 (1.18)
3/4 (19.1)	34.0 (302)	1.2 (1.79)	39.1 (348)	1.2 (1.79)	26.0 (231)	0.95 (1.41)
13/16 (20.6)	40.0 (356)	1.4 (2.08)	46.0 (409)	1.4 (2.08)	30.0 (267)	1.10 (1.64)
7/8 (22.2)	46.0 (409)	1.6 (2.38)	52.9 (471)	1.6 (2.38)	35.0 (311)	1.28 (1.90)
15/16 (23.8)	54.0 (480)	1.9 (2.83)	62.1 (552)	1.9 (2.83)	40.0 (356)	1.47 (2.19)
1 (25.4)	61.0 (543)	2.1 (3.13)	70.2 (625)	2.1 (3.13)	45.7 (407)	1.67 (2.49)
1-1/16 (27.0)	69.0 (614)	2.4 (3.57)	79.4 (706)	2.4 (3.57)		
1-1/8 (28.6)	78.0 (694)	2.7 (4.02)	89.7 (798)	2.7 (4.02)	57.8 (514)	2.11 (3.14)
1-3/16 (30.2)	86.0 (765)	3.0 (4.47)	98.9 (880)	3.0 (4.47)		
1-1/4 (31.8)	96.0 (854)	3.3 (4.91)	110 (979)	3.3 (4.91)	72.2 (642)	2.64 (3.93)
1-5/16 (33.3)	106 (943)	3.6 (5.36)	122 (1085)	3.6 (5.36)		
1-3/8 (34.9)	116 (1032)	4.0 (5.95)	133 (1183)	4.0 (5.95)	87.8 (781)	3.21 (4.48)
1-7/16 (36.5)	126 (1121)	4.3 (6.40)	145 (1290)	4.3 (6.40)		
1-1/2 (38.1)	138 (1228)	4.7 (7.00)	159 (1415)	4.7 (7.00)	104 (925)	3.82 (5.69)
1-9/16 (39.7)	150 (1335)	5.1 (7.59)	173 (1539)	5.1 (7.59)		
1-5/8 (41.3)	162 (1441)	5.6 (8.34)	186 (1655)	5.6 (8.34)	123 (1094)	4.51 (6.71)
1-11/16 (42.9)	176 (1566)	6.0 (8.93)	202 (1797)	6.0 (8.93)		
1-3/4 (44.4)	188 (1673)	6.4 (9.53)	216 (1922)	6.4 (9.53)	143 (1272)	5.24 (7.80)
1-13/16 (46.0)	202 (1797)	6.9 (10.3)	232 (2064)	6.9 (10.3)		
1-7/8 (47.6)	216 (1922)	7.4 (11.0)	248 (2206)	7.4 (11.0)	164 (1459)	6.03 (8.98)
1-15/16 (49.2)	230 (2046)	7.9 (11.8)	265 (2358)	7.9 (11.8)		

All dimensions are in inches. "U" Bolt & Spool type also available.

PRODUCT SPECIFICATIONS

BREAKING LOAD TABLES - STRUCTURES & UTILITIES



PS 1000 for Structures (continued)

Diameter Inches (mm)	GALVANIZED STRAND PS 1000 ASTM A-586 GRADE 1		GALVANIZED STRAND PS 1000UHS ASTM A-586 GRADE 2		GALVANIZED ROPE ASTM A-603	
	Min. Breaking Load-tons (kN)	Approx. Weight lbs/ft (kg/m)	Min. Breaking Load-tons (kN)	Approx. Weight lbs/ft (kg/m)	Min. Breaking Load-tons (kN)	Approx. Weight lbs/ft (kg/m)
2 (50.8)	245 (2180)	8.4 (12.5)	282 (2509)	8.4 (12.5)	186 (1655)	6.85 (10.2)
2-1/16 (52.4)	261 (2322)	8.9 (13.2)	300 (2669)	8.9 (13.2)		
2-1/8 (54.0)	277 (2464)	9.5 (14.1)	319 (2838)	9.5 (14.1)	210 (1868)	7.73 (11.5)
2-3/16 (55.6)	293 (2607)	10 (14.9)	337 (2998)	10 (14.9)		
2-1/4 (57.1)	310 (2758)	11 (16.4)	357 (3176)	11 (16.4)	235 (2091)	8.66 (12.9)
2-5/16 (58.7)	327 (2909)	11 (16.4)	376 (3345)	11 (16.4)		
2-3/8 (60.3)	344 (3060)	12 (17.9)	396 (3523)	12 (17.9)	261 (2322)	9.61 (14.3)
2-7/16 (61.9)	360 (3203)	12 (17.9)	414 (3683)	12 (17.9)		
2-1/2 (63.5)	376 (3345)	13 (19.4)	432 (3843)	13 (19.4)	288 (2562)	10.6 (15.8)
2-9/16 (65.1)	392 (3488)	14 (20.8)	451 (4012)	14 (20.8)		
2-5/8 (66.7)	417 (3710)	14 (20.8)	480 (4270)	14 (20.8)	317 (2820)	11.6 (17.3)
2-11/16 (68.3)	432 (3843)	15 (22.3)	497 (4422)	15 (22.3)		
2-3/4 (69.8)	452 (4021)	16 (23.8)	520 (4626)	16 (23.8)	347 (3087)	12.7 (19.0)
2-7/8 (73.0)	494 (4395)	17 (25.3)	568 (5053)	17 (25.3)	379 (3372)	13.9 (20.7)
3 (76.2)	538 (4786)	19 (28.3)	619 (5507)	19 (28.3)	412 (3665)	15.1 (22.5)
3-1/8 (79.4)	584 (5196)	21 (31.3)	672 (5979)	21 (31.3)		
3-1/4 (82.6)	625 (5560)	22 (32.7)	719 (6397)	22 (32.7)	475 (4226)	18.8 (28.0)
3-3/8 (85.7)	673 (5988)	24 (35.7)	774 (6886)	24 (35.7)		
3-1/2 (88.9)	724 (6441)	26 (38.7)	833 (7411)	26 (38.7)	555 (4938)	21.0 (31.3)
3-5/8 (92.1)	768 (6833)	28 (41.7)	883 (7856)	28 (41.7)		
3-3/4 (95.2)	822 (7313)	30 (44.6)	945 (8407)	30 (44.6)	640 (5694)	24.0 (35.7)
3-7/8 (98.4)	878 (7811)	32 (47.6)	1010 (8986)	32 (47.6)		
4 (101.6)	925 (8230)	34 (50.6)	1060 (9431)	34 (50.6)	730 (6495)	27.0 (40.2)
4-1/8 (104.8)	1035 (9208)	35 (52.2)	1186 (10550)	35 (52.2)		
4-1/4 (108.0)	1090 (9698)	37 (55.1)	1249 (11112)	37 (55.1)		
4-3/8 (111.1)	1125 (10009)	39 (58.0)	1289 (11468)	39 (58.0)		
4-1/2 (114.3)	1200 (10676)	42 (62.3)	1375 (12233)	42 (62.3)		

All dimensions are in inches. "U" Bolt & Spool type also available.

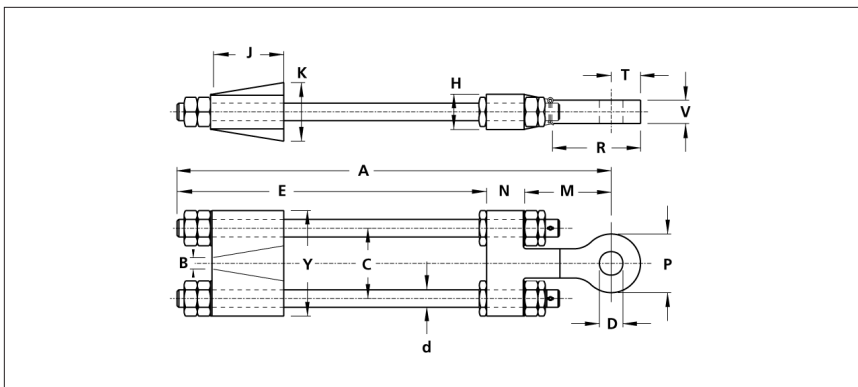
CLOSED TAKE-UP ASSEMBLIES

72" Adjustment

(also available with 24", 36", 48" & 96" take-ups)

STRAND DIAMETER	A	B	C	d	D	E	H	J	K	P	R	T	V	Y	WT LBS.
1/2	84.31	0.68	3.38	0.63	1.25	79.06	1.38	3.12	2.12	2.5	4	1.25	1	4.62	22
9/16-5/8	85.49	0.81	4.38	0.75	1.44	79.36	1.56	3.81	2.5	3.25	4.5	1.63	1.13	5.88	34
11/16-3/4	89.82	1	4.68	1	1.69	82.76	2.25	4.44	3.3	3.63	5	1.81	1.44	6.56	61
13/16-7/8	92.39	1.13	5.18	1.12	2.06	84.14	2.69	5.06	3.75	4.38	6	2.19	1.56	7.31	84
15/16-1	93.5	1.25	5.75	1.25	2.31	83.56	2.5	5.81	4.12	5.25	6.62	2.63	1.69	8.18	115
1-1/16-1-1/8	95.87	1.5	6	1.38	2.56	84.43	2.56	6	4.5	5.75	7.5	2.88	1.81	8.62	139
1-3/16-1-1/4	98.65	1.63	6.75	1.5	2.81	85.27	3	6.38	4.88	6.38	9	3.19	2.06	9.75	193
1-5/16-1-3/8	101.65	1.75	7.19	1.75	3.06	86.71	3.25	6.94	5.38	7	10	3.5	2.38	10.38	255
1-7/16-1-1/2	103.83	1.88	8.13	2	3.56	87.89	3.5	7.31	6.5	8	11	4	2.56	11.88	342
1-9/16-1-3/4	105.6	2.13	9	2.25	3.81	89.22	4.38	8.13	7.25	9	11.5	4.5	2.81	13.13	474
1-13/16-2	110.72	2.5	10.25	2.5	4.56	91.97	4.5	9.31	8	10.38	12.5	5.5	3.06	14.63	663
2-1/16-2-1/4	111.97	3	11.5	2.75	4.81	93.22	5.13	10.88	9	12.25	13.25	6.13	3.31	16.44	856
2-5/16-2-3/8	116.17	3.13	12.69	3	5.06	95.54	6.31	11.81	9.75	12.5	14.96	6.25	3.69	18	1040
2-7/16-2-5/8	118.8	3.38	13.38	3.25	5.81	96.8	6.88	12.81	10.5	13.5	17.31	7.75	4	19.25	1319
2-11/16-2-3/4	124.31	3.5	14.06	3.5	5.81	100.68	6.69	13.38	11.38	14.5	19.25	8	4.19	21.13	1568
2-7/8-3	131.68	3.63	15.25	3.75	6.81	101.68	7	15.5	12.25	16	20.25	9.25	4.5	22	2056
3-1/8-3-1/4	137.43	3.88	17.25	4	7.06	105.99	8.25	17.13	13	18	24	11	4.75	24.5	2518
3-3/8-3-1/2	142.18	3.94	18.31	4.25	7.31	109.18	8.38	19.31	13.88	18	25	11	5	26.06	3052
3-5/8-3-3/4	143.93	4.25	19.38	4.5	7.56	110.43	9.38	21.13	14.75	18	25.25	11.63	5.25	27.13	3495
3-7/8-4	148.8	4.5	20.44	4.75	7.81	112.8	9.75	22.94	15.75	20	26	12.25	5.5	29.44	4170

All dimensions are in inches. "U" Bolt & Spool type also available.



PRODUCT SPECIFICATIONS

BREAKING LOAD TABLES - STRUCTURES & UTILITIES

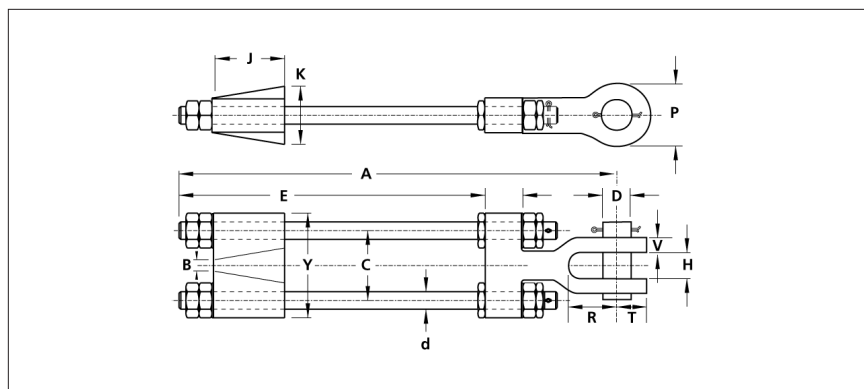
OPEN TAKE-UP ASSEMBLIES

72" Adjustment

R T (also available with 24", 36", 48" & 96" take-ups)

STRAND DIAMETER	A	B	C	d	D	E	H	J	K	P	R	T	V	Y	WT LBS.
1/2	84.44	0.68	3.38	0.63	1.19	79.06	1.25	3.12	2.12	2.5	2.5	1.38	0.63	4.62	24
9/16-5/8	85.99	0.81	4.38	0.75	1.38	79.36	1.5	3.81	2.5	2.75	3	1.63	0.75	5.88	38
11/16-3/4	90.98	1	4.68	1	1.63	82.98	1.75	4.44	3.3	3.25	3.51	1.88	1	6.56	59
13/16-7/8	92.7	1.13	5.18	1.12	2	84.57	2	5.06	3.75	4	4	2.25	1.13	7.31	82
15/16-1	93.93	1.25	5.75	1.25	2.25	83.93	2.25	5.81	4.12	4.5	4.5	2.63	1.25	8.18	114
1-1/16-1-1/8	96.06	1.5	6	1.38	2.5	84.68	2.5	6	4.5	5	5	2.88	1.38	8.62	142
1-3/16-1-1/4	99.46	1.63	6.75	1.5	2.75	86.08	3	6.38	4.88	5.5	6	3.13	1.63	9.75	191
1-5/16-1-3/8	101.9	1.75	7.19	1.75	3	87.65	3	6.94	5.38	6	6.5	3.38	1.75	10.38	243
1-7/16-1-1/2	104.76	1.88	8.13	2	3.5	88.88	3.5	7.31	6.5	7	7	4	2	11.88	339
1-9/16-1-3/4	106.47	2.13	9	2.25	3.75	90.1	4	8.13	7.25	7.5	7	4.5	2.25	13.13	462
1-13/16-2	112.91	2.5	10.25	2.5	4.25	93.16	4.5	9.31	8	8.5	9.5	5	2.5	14.63	642
2-1/16-2-1/4	116.04	3	11.5	2.75	4.75	94.16	5	10.88	9	9.5	10	5.5	2.75	16.44	905
2-5/16-2-3/8	120.54	3.13	12.69	3	5	96.17	5.38	11.81	9.75	10	11.25	5.75	3	18	1121
2-7/16-2-5/8	123.11	3.38	13.38	3.25	5.75	97.36	6	12.81	10.5	11.5	11.5	6.63	3.25	19.25	1425
2-11/16-2-3/4	127.36	3.5	14.06	3.5	5.75	100.74	6.25	13.38	11.38	11.5	11.5	6.63	3.5	21.13	1689
2-7/8-3	131.05	3.63	15.25	3.75	6.75	102.05	7.50	15.50	12.25	13.50	12.00	7.63	3.75	22.00	2144
3-3/8-3-1/2	141.18	3.94	18.31	4.25	7.25	109.05	8	19.31	13.88	15	13	8.5	4.25	26.06	3242
3-5/8-3-3/4	143.93	4.25	19.38	4.5	7.5	110.43	8.25	21.13	14.75	16	13.5	9	4.5	27.13	3872
3-7/8-4	148.06	4.5	20.44	4.75	7.88	112.8	8.5	22.94	15.75	17	14.25	9.63	4.75	29.44	4531

All dimensions are in inches. "U" Bolt & Spool type also available.

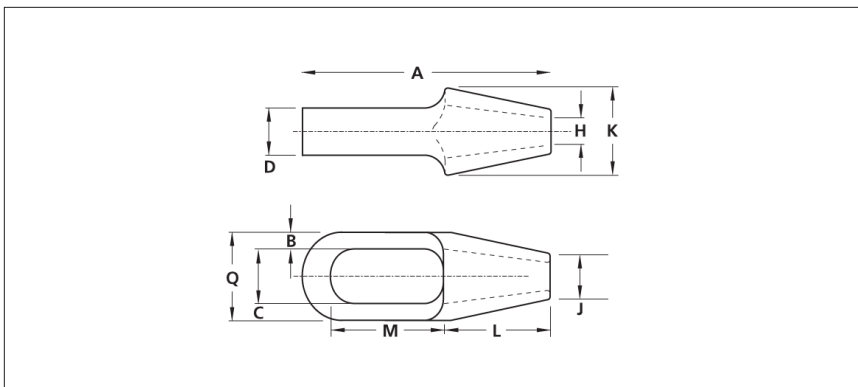


CLOSED SPELTER SOCKETS

for structure

STRAND DIAMETER	ROPE DIAMETER	A	B	C	D	H	J	K	L	M	Q	WT LBS.
1/2	9/16-5/8	6.38	0.63	1.38	1	0.69	1.19	2.38	3	2.5	2.63	3
9/16-5/8	3/4	7.63	0.69	1.63	1.25	0.81	1.31	2.75	3.5	3.06	3	5
1-1/16-3/4	7/8	8.88	0.88	1.88	1.5	1	1.5	3.13	4	3.56	3.63	9
1-3/16-7/8	1	10	0.94	2.25	1.75	1.13	1.75	3.75	4.5	4.06	4.13	12
15/16-1	1-1/8	11.13	1	2.5	2	1.25	2	4.13	5	4.56	4.5	17
1-1/16-1-1/8	1-1/4-1-3/8	12.31	1.13	2.75	2.19	1.5	2.25	4.75	5.5	4.94	5	22
1-3/16-1-1/4	1-1/2	14	1.13	3.13	2.5	1.63	2.75	5.25	6	6	5.38	30
1-5/16-1-3/8	1-5/8	15.13	1.25	3.25	2.75	1.81	3	5.5	6.5	6.5	5.75	35
1-7/16-1-5/8	1-3/4-1-7/8	17.38	1.5	3.69	3	2.13	3.13	6.38	7.38	7.88	6.69	52
1-11/16-1-3/4	2-2-1/8	19.75	1.91	3.81	3.25	2.25	3.75	7.28	8.5	8.81	7.63	86
1-13/16-1-7/8	2-1/4-2-3/8	21.63	2.06	4.38	3.69	2.56	4.5	8.25	9	9.75	8.5	116
1-15/16-2	2-1/2-2-5/8	24.75	2.13	5.5	4	2.88	5.25	9.25	10.5	10.69	9.75	170
2-3/16-2-7/16	2-3/4-2-7/8	26.25	2.25	6.25	4.88	3.25	6	10	11.5	11	10.75	228
2-1/2-2-5/8	3-3-1/8	28	2.5	6.75	5.25	3.63	6.63	10.75	12.5	11.38	11.75	297
2-3/4-2-7/8	3-1/4-3-3/8	28.5	2.5	7.25	5.75	3.88	6.88	11.5	12.5	11.63	12.25	326
3-3-1/8	3-1/2-3-5/8	30.75	2.63	7.75	6.25	4	7.5	12.5	13.5	12.63	13	410
3-1/4-3-5/8	3-3/4-4	32.25	2.88	8.5	7	4.5	8	12.75	15	12.94	14.25	535
3-3/4-4	4-1/4-4-1/2	35.5	3.25	9	7.75	4.88	8.25	14.25	16.5	14.5	15.5	615
4-1/4-4-1/2	4-3/4-5	42.38	3.5	10.5	8.25	5.38	9.25	16	21	16	17.5	940
4-3/4-5	5-1/4-5-1/2	47.25	3.75	11.5	8.75	5.88	9.75	17.25	23	18.5	19	1180
5-1/4-5-1/2	5-3/4-6	52	4.25	13	9	6.38	11	19	25	20	21.5	1600

All dimensions are in inches.



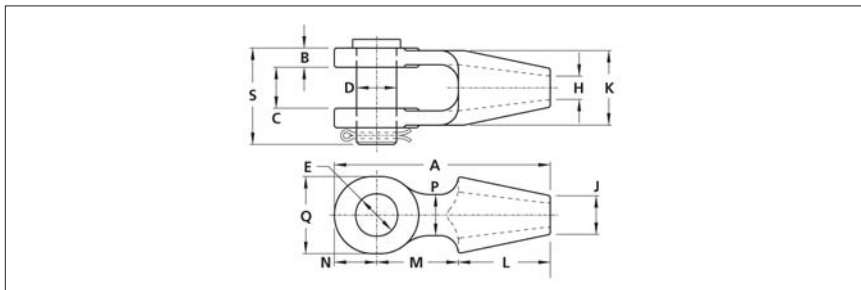
PRODUCT SPECIFICATIONS

BREAKING LOAD TABLES - STRUCTURES & UTILITIES

OPEN SPELTER SOCKETS

STRAND DIAMETER	ROPE DIAMETER	A	B	C	ØD	ØE	ØH	ØJ	K	L	M	N	P	Q	S	WT LBS.
1/2	9/16-5/8	6.75	0.56	1.25	1.19	1.25	0.69	1.13	2.38	3	2.56	1.25	1.25	2.25	3.06	4
9/16-5/8	3/4	7.94	0.69	1.5	1.38	1.44	0.81	1.38	2.74	3.5	3	1.44	1.5	2.63	3.44	7
11/16-3/4	7/8	9.25	0.81	1.75	1.63	1.69	1	1.63	3.25	4	3.5	1.75	1.75	3.25	3.94	10
13/16-7/8	1	10.56	0.94	2	2	2.06	1.13	1.75	3.75	4.5	4	2.06	2	3.75	4.63	15
15/16-1	1-1/8	11.88	1	2.25	2.25	2.31	1.25	1.94	4.25	5.06	4.5	2.31	2.38	4.13	5.13	23
1-1/16-1-1/8	1-1/4-1-3/8	13.06	1.13	2.5	2.5	2.56	1.5	2.19	4.69	5.38	5	2.69	2.88	4.63	5.81	33
1-3/16-1-1/4	1-1/2	15.13	1.19	3	2.75	2.81	1.63	2.75	5.38	6	6	3.13	3	5.38	6.25	43
1-5/16-1-3/8	1-5/8	16.25	1.31	3	3	3.06	1.75	2.88	5.63	6.5	6.5	3.25	3.25	5.75	6.5	52
1-7/16-1-5/8	1-3/4-1-7/8	18.38	1.63	3.5	3.5	3.56	2	3.13	6.25	7.5	7	3.88	3.88	6.5	7.63	83
1-11/16-1-3/4	2-2-1/8	21.75	1.81	4	3.75	3.81	2.25	3.75	7.5	8.5	9	4.25	4.25	7.25	8.88	127
1-13/16-1-7/8	—	21.75	1.81	4	4	4.06	2.25	3.75	7.5	8.5	9	4.25	4.25	7.25	9	130
1-15/16-2	2-1/4-2-3/8	23.75	2.13	4.5	4.25	4.31	2.5	4	8.38	9	10	4.75	4.38	8	10	178
2-1/16-2-1/8	—	23.75	2.13	4.5	4.5	4.56	2.5	4	8.38	9	10	4.75	4.38	8	10	184
2-3/16-2-1/4	2-1/2-2-5/8	26	2.38	5	4.75	4.81	2.88	4.5	9.25	9.75	11	5.25	4.75	8.5	11.25	236
2-5/16-2-3/8	2-3/4-2-7/8	28.25	2.88	5.25	5	5.06	3.13	5.31	10.13	11.5	11.5	5.25	5.25	9	12.5	315
2-7/16-2-9/16	3-3-1/8	29.75	3	5.75	5.25	5.31	3.38	7.5	10.75	12.5	11.5	5.75	5.5	9.5	13.25	424
2-5/8-2-3/4	3-1/4	30.5	3	6	5.75	5.81	3.5	7.38	11.5	12.5	12	6	5.5	9.75	13.5	484
2-7/8-3	3-3/8	31.75	3.13	6.25	6	6.06	3.63	7.63	11.5	12.5	12	7.25	6	12	14.25	558
3-1/8-3-1/4	3-1/2	32.5	3.25	6.75	6.5	6.56	3.88	8.25	12.25	13.25	12.5	6.75	7	11.25	15	627
3-3/8-3-1/2	3-5/8	34.75	3.38	7.25	6.75	6.81	4	8.63	13.25	14	13	7.75	7.25	11.75	15.63	734
3-5/8-3-3/4	3-3/4-4	36.25	3.5	7.5	7	7.06	4.25	9.25	14.25	15	13.5	7.75	7.5	13	16.25	844
3-7/8-4	4-1/8	38.75	3.63	8	7.25	7.31	4.5	9.75	14.5	15.5	14.25	9	8	14.5	17	999
4-1/8-4-3/8	4-1/4-4-1/2	44.38	3.88	8.25	7.25	7.31	5.25	9.5	16	18.5	16.5	9.38	8.5	15	17.25	1217
4-1/2-4-3/4	4-3/4-5	46.25	4	8.5	7.5	7.56	5.5	10.5	16.5	19	17.25	10	8.5	16	18.13	1405
4-7/8-5-1/8	5-1/4-5-1/2	49.25	4.5	8.75	8	8.06	6	11	17.15	21	18	10.25	9	16.5	19	1645
5-1/4-5-1/2	5-3/4-6	52.63	4.88	9	8.75	8.81	6.38	12	18.75	22.5	19	11.13	10	18	20	2090

All dimensions are in inches.



CONTACTS

Head Office

5501 Trans-Canada Highway
Pointe-Claire, Quebec
H9R 1B7 Canada

Tel: 514.697.9711
Fax: 514.697.3534
Toll free: 1.800.565.5501

General & Sales Inquiries

mail@wirerope.com

For Sales Representatives and Distributors in Canada, USA,
and South America, please visit the CONTACT section of
our website at www.wirerope.com

www.wirerope.com