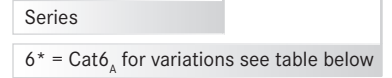


**PART NUMBER**

**Y-ConProfixPlug - 6\***



**SERIES Y-ConProfixPlug**

RoHS2011/65/EU

**DESCRIPTION**

RJ45 cable plug, Cat5 and Cat6<sub>A</sub> according to ISO/IEC 11801 standard with integrated wire manager, tool free field-assembly, variable cable diameters, with power contacts

RJ45 Kabelstecker Cat6<sub>A</sub> gemäß ISO/IEC 11801 mit integrierter insert, werkzeuglos feldassemblierbar, flexibler Kabeldurchmesser, mit Powerkontakten

**MATERIAL**

Plug body PC, PA (UL94V-0)  
Steckergehäuse

Shielding Nickel plated brass  
Schirmung

Contact Contact area 30µ”Au over Ni  
Kontakte

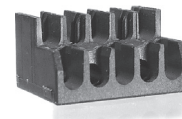
**SPECIFICATIONS**

Operating Temp. -40°C ~ +120°C  
Betriebstemp.

Durability 1,500 mechanical cycles  
Lebensdauer

Current Rating 3.1A @ 70°C (power contacts)  
Bemessungsstrom

**ACCESSORIES PART NO.: Y-ConProfixPlug-INS-11  
Y-ConProfixPlug-INS-17**



**DESCRIPTION**

Wire manager Y-ConProfixPlug-INS-11 is separately available for wires with max. Ø1.1mm  
Wire manager Y-ConProfixPlug-INS-17 is available for wires with max. Ø1.7mm

Insert Y-ConProfixPlug-INS-11 ist verfügbar für Litzendurchmesser mit max. 1.1mm.

Insert Y-ConProfixPlug-INS-17 ist verfügbar für Litzendurchmesser mit max. 1.7mm

**CABLE SPECIFICATIONS**

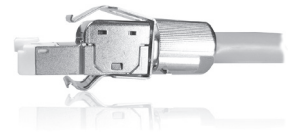
AWG 22 - 26 Solid wire  
AWG 22 - 26 Stranded wire

Cable Diameter 6.8mm ~ 9.25mm  
Kabeldurchmesser

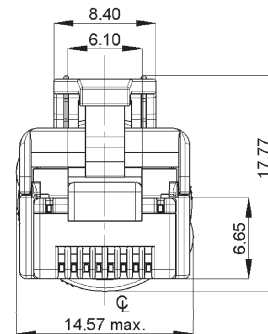
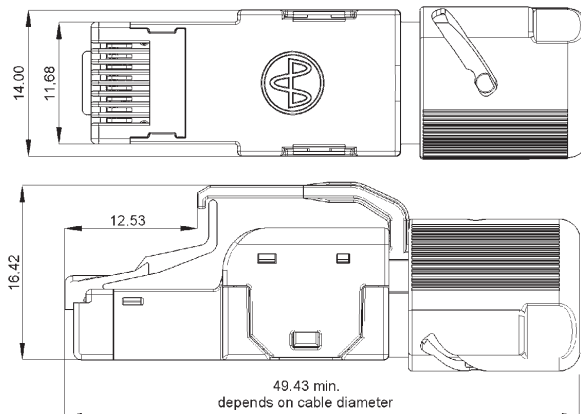
**INFO**

Information about Y-ConProfixLocking version see page 23

Informationen zu Y-ConProfixLocking finden Sie auf Seite 23



**Y-ConProfixPlug OUTLINE DIMENSIONS**



Part Number	Signal Contacts	Power Contacts	Category	Max. Outer Wire Ø in mm
Y-ConProfixPlug-51	8	2	Cat5	1.1mm (standard)
Y-ConProfixPlug-53	8	0	Cat5	1.1mm (standard)
Y-ConProfixPlug-61	8	2	Cat6 <sub>A</sub>	1.1mm (standard)
Y-ConProfixPlug-63	8	0	Cat6 <sub>A</sub>	1.1mm (standard)