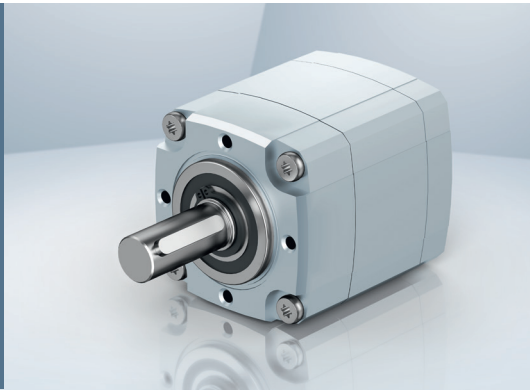


Planetary gear head

Optimax 63



- Planetary gear head optimized for the new electronic commutated ECI motors from ebm-papst
- Extreme high overload capability to cope with peak torques
- Robust gear head concept for extended service life
- Modular design and interfaces for maximum flexibility within ebm-papst system construction kit
- High of efficiency realized in a compact design
- Degree of protection IP 40 (optional IP 54)

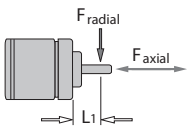
Nominal data / Gearhead data

Type		63.1	63.1	63.1	63.2	63.2	63.2	63.2
Ratio / number of stages	i / number of stages	3:1 / 1	5:1 / 1	9:1 / 1	9:1 / 2	15:1 / 2	25:1 / 2	45:1 / 2
Efficiency	%	≥ 90	≥ 90	≥ 90	≥ 81	≥ 81	≥ 81	≥ 81
Recommended input speed (n _i)	min ⁻¹	4 000	4 000	4 000	4 000	4 000	4 000	4 000
Output torque (M _{ab})*	Nm	2.3	3.8	6.0	6.2	10.3	17.2	27.3
Short-term torque (M _{ma})	Nm	9	15	24	25	41	69	109
Suitable motor type		≤ ECI-63.60	≤ ECI-63.60	≤ ECI-63.40	≤ ECI-63.60	≤ ECI-63.60	≤ ECI-63.60	≤ ECI-63.40
Backlash	Degree	< 0.7	< 0.7	< 0.7	< 1.2	< 1.2	< 1.2	< 1.2
Ambient temperature range (T _U)	°C	-30 ... +90	-30 ... +90	-30 ... +90	-30 ... +90	-30 ... +90	-30 ... +90	-30 ... +90
Operating mode		S1 / S3**	S1 / S3**	S1 / S3**	S1 / S3**	S1 / S3**	S1 / S3**	S1 / S3**
Degree of protection	IP	40	40	40	40	40	40	40
Weight (m)	kg	0.85	0.85	0.85	1.2	1.2	1.2	1.2

Subject to change

* In S1 operation / operating factor c_B = 2.0

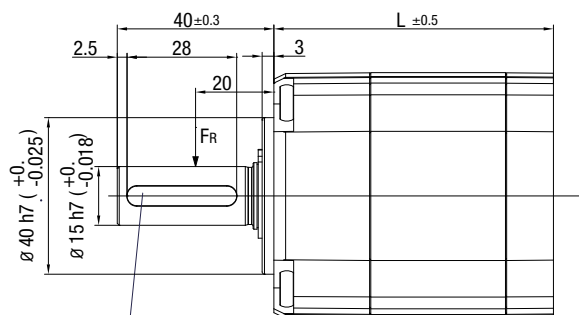
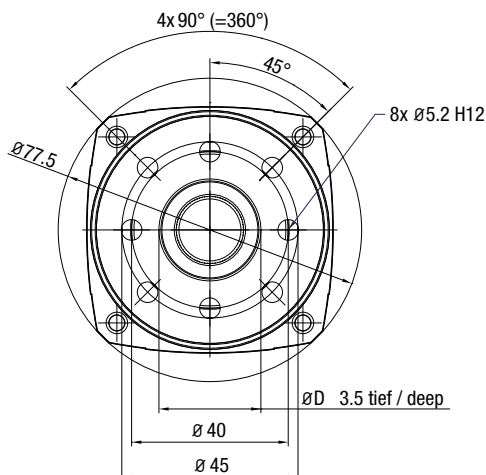
** M_{eff} = M_{ab}



F_{axial} 500 N
F_{radial} 500 N
L₁ = 20 mm

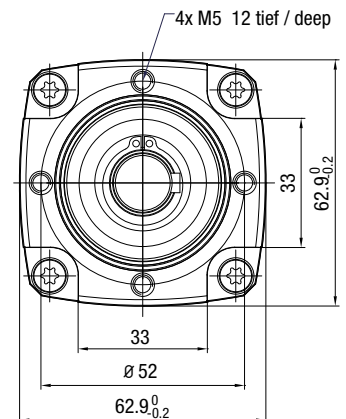
Permissible shaft load at nominal speed and life expectancy of 20 000 h

Technical Drawing



Passfeder / feather key
DIN 6885-A5x5x28

	D	L
1-stufig / stage	Ø25 H8 (+0.033)	71.5
2-stufig / stage	Ø32 H8 (+0.039)	102.7



all dimensions are indicated in mm