

Zero 88 Product Catalogue

English - Issue 22



Zero 88 Performance Lighting Controls

Zero 88 has been a market leader in entertainment lighting controls for over 40 years. Providing dimming, consoles and networking solutions for the ultimate in performance lighting control.

With focus on the unique and specialist needs of the entertainment industry, the Zero 88 product range provides control products that can be found whenever dynamic lighting is required, including theatrical, live performance, education, presentation and architainment applications.

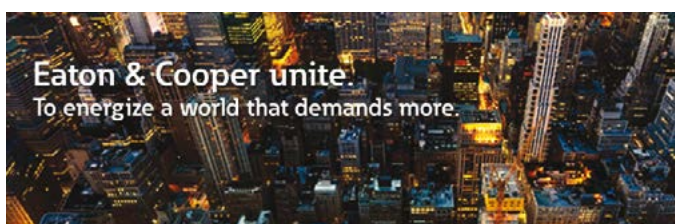
We support our customers through our worldwide specialist team working alongside dedicated local distributors, to bring you cost effective solutions, consistent high quality and a personal service.

Lighting Controls by Eaton

With more than 40 years of operational expertise in the design, supply and support of lighting control systems, our focus is to deliver innovation, reliability and flexibility through our portfolio of industry leading product series including Zero 88, iLight, Greengate and Cogent Lighting.

CONTENTS

Lighting Controls by Eaton	p. 2 - 3
Why Zero 88?	p. 4 - 5
Introducing our Lighting Consoles	p. 6 - 7
Choosing the Right Console	p. 8 - 9
ZerOS	p. 10 - 11
ORB XF	p. 12 - 13
Solution & Solution XL	p. 14 - 15
FLX	p. 16 - 17
Wing	p. 18
SCD Server & SCD Server Pro	p. 19
Jester Range	p. 20 - 25
Juggler	p. 26
Level 6	p. 27
Network & Data Distribution	p. 28 - 35
Introduction to Dimming	p. 36 - 37
Chilli Dimmers	p. 38 - 40
Chilli Accessories	p. 41
Spice & Spice Rack	p. 42 - 43
Betapack 3, Alphapack 3 & Rack 6	p. 44 - 47
Services & Support	p. 48 - 49
Glossary	p. 50 - 51



Our combined strength enables us to look at the world through a larger lens, to see more possibilities and better opportunities. Enabling you to more efficiently manage energy consumption, increase uptime and lower costs - while keeping personnel, equipment and data safe.

Today's Eaton is building on a legacy of innovation in product design and manufacturing processes to bring you holistic solutions to your most critical power management challenges. We're drawing a history of over 100 years of electrical power management expertise to create technology platforms that help accelerate the pace of new construction; modernize aging infrastructure; manage energy consumption; protect people, equipment and data.

We want to work closely with you to understand and solve the challenges you face today and those that may come tomorrow.

Lighting Controls Product Series

zero88 Zero 88 Series

Entertainment lighting control equipment and software for theatrical and performance applications around the world.

- Lighting consoles and dimming racks
- Colour changing LED controls
- Control of moving and effect lighting

www.zero88.com

iLIGHT iLight Series

Global offering of architectural lighting control systems designed to create stunning visual impact and atmosphere in hospitality, restaurant, retail, residential, commercial & exterior applications.

- Intuitive user interfaces
- Scalable network with distributed intelligence
- Dimming and switching of all load types

www.ilight.co.uk

Greengate Greengate Series

Global offering of energy management lighting controls for commercial and industrial applications for both the 230V & 110V markets.

- Flexible, scalable lighting control networks
- Occupancy sensors
- Daylight harvesting

www.greengatecontrols.co.uk

Cogent Cogent Series

Comprehensive range of single and colour changing LED luminaires including high quality downlights, wall lights, ground lights, flexible & modular strip systems.

- Wide range of LED systems
- Drivers and controls included
- Custom solutions

www.cogentlighting.com

Why Zero 88?

Intuitive Control Philosophy & Product Expertise



Zero 88 has provided professional products at affordable prices for over 40 years. We focus on delivering outstanding products with lifetime service and value, making us the entertainment lighting control supplier of choice for thousands of venues worldwide.

Intuitive Control Philosophy

Ease of use is high on our priority list. All Zero 88 products are intuitive; designed so that new users can quickly get up to speed and more experienced lighting professionals can easily program more complex lighting effects.

Intuitive and uncomplicated menu structures allow instant access to the information or commands you require. Our products feel instantly familiar through the use of industry standard syntax. Creative user interface design allows even complex lighting commands to be executed with the minimum of key strokes. Flexible and customisable features also allow seasoned operators to tailor higher specification consoles to suit their programming style.

- Creative user interface design
- Instant access to commands and information
- Standard industry syntax
- Customisable features

Product Expertise

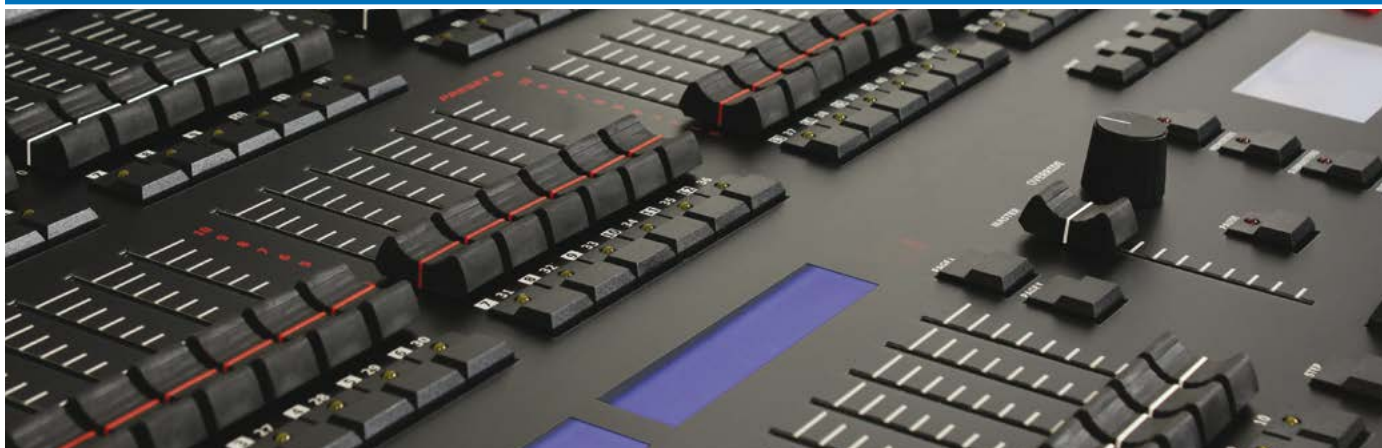
Zero 88 meets the needs of the entertainment lighting industry by doing what we do best – delivering targeted, reliable products to distinct segments of the marketplace such as theatre, education, television and live performance. Knowing that one product does not fit all, we research each sector and focus on developing creative solutions to meet your unique requirements.

Zero 88 has unrivalled experience of the specialists needs of entertainment technology, through the diverse expertise of its staff and the knowledge of our worldwide distribution network.

- Unrivalled experience
- Specially targeted products based on user feedback
- Worldwide distribution network



Customer Service Excellence & Best Value



Customer Service Excellence

Zero 88 is dedicated to customer satisfaction and support. We work hard to build and maintain relationships with our global distribution partners to ensure customers get the very best service.

Whilst part of the global Eaton organisation, Zero 88 is very close to the entertainment market and we understand what is needed to service our customers in the best possible way. Our highly flexible, customer centric approach means we can rapidly respond to changing customer needs and go the extra mile to deliver both great products and great service.

Regular free training courses, a 24 hour support forum and an extensive web-based support centre ensure our products are supported from specification, to installation and through their lifetime.

- **Global presence – local support**
- **Regular free training courses**
- **24 hour support forum**
- **Extensive web based support centre**

Best Value

Zero 88 products are robust and reliable, designed to withstand the demanding environment of live performance, including heat, dust, humidity, limited space and rigorous touring. Our products are designed to last, but if something should go wrong all our products are supported by an industry leading 3 year warranty.

Our process of continued innovation and development means Zero 88 products are frequently updated in line with changing industry needs; ensuring users have access to the very latest control technology.

- **Industry leading 3 year warranty**
- **Continued innovation**
- **Free software updates**



Introducing our Lighting Control Consoles

Zero 88 Lighting Consoles



Zero 88 provides a range of lighting control consoles, each tailored to meet the needs of different types of user. Choosing the right console depends on a number of key factors.



Nature of Performance

The nature of the performance you are lighting will have an affect on the lighting design required, the control options needed for programming and the amount of time available.

Traditional theatre performances generally have a little longer for programming, allowing for pre-determined scenes and sequential playback. At the top end, lighting can be incredibly complex and the options must be available for making minor adjustments and creating subtle effects.

During live performances lighting is often required on the fly, so the ability to busk on the console and quickly access lighting scenes and effects is critical.

Budget

We believe great lighting control products should be available to everyone and not just those with big budgets.

Zero 88 understands that customers are looking for great value, and we manufacture a range of consoles that cater for different requirements and budgets.





Space available

Space may sound like a minor consideration but many control rooms are cramped, with space for equipment at a premium. For many applications there is a balance between features required and space available, especially in small to mid sized venues. Consideration must be given to where the console will be located, especially if space for peripheral items such as monitors and keyboards is also required.

Level of control complexity

Different shows require different levels of lighting complexity and a different mix of fixtures that need controlling.

When choosing a console it is important to understand what lighting fixtures and auxiliary items you need to control, and how many of each are required. Control of moving lights and LEDs is particularly important. Whilst many consoles can control these fixtures, simple and effective moving light and LED control can only be achieved by those products specifically designed for them.

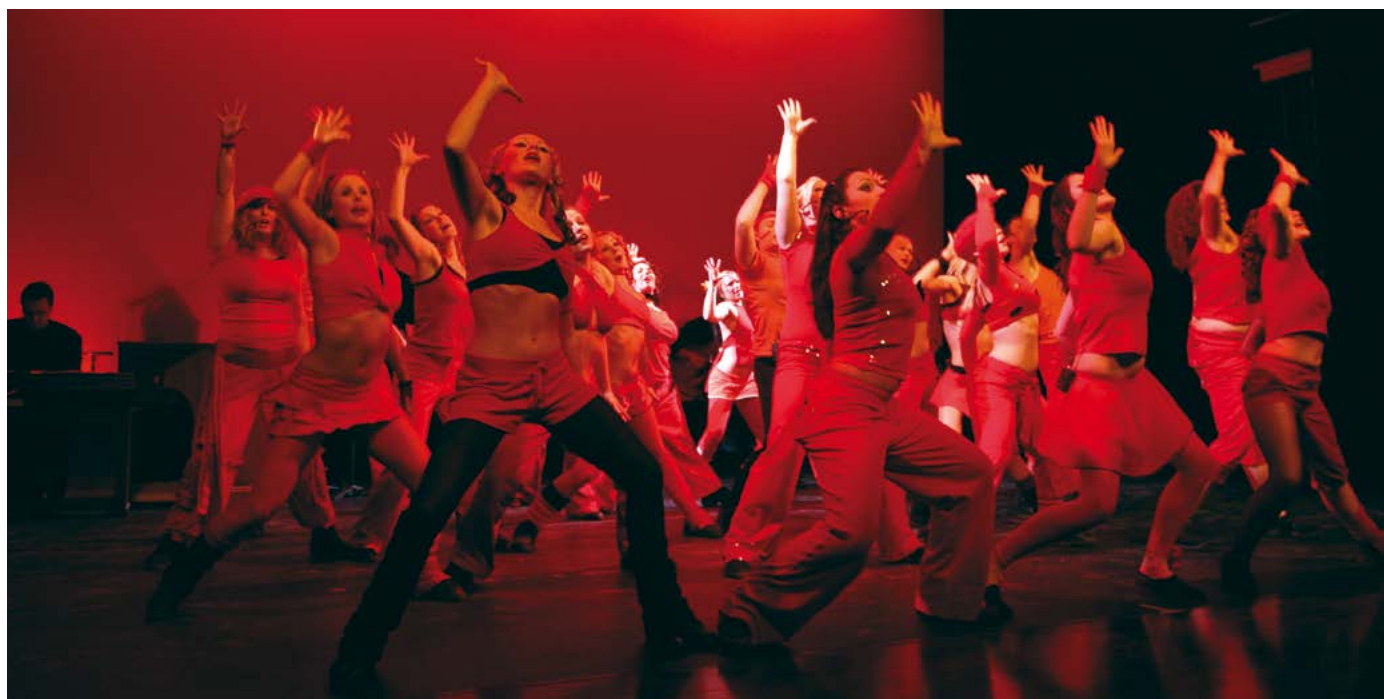


Level of user experience

There are many consoles in the marketplace but matching your console to the level of user experience is probably one of the most critical factors. Too complicated and new users will get confused, too simple and experienced professionals will get frustrated.

If your venue has a variety of operators or is only ever used for the occasional production, it is important that your console is uncomplicated so that users can easily access and manipulate the lighting in an intuitive and straightforward way.



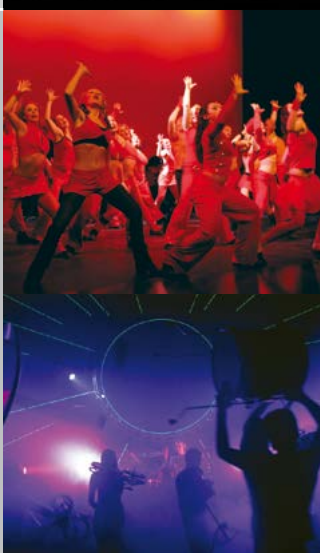

For users with more experience the console must provide an extensive range of tools and programming options to allow them to quickly create and execute sophisticated lighting designs time after time.



Choosing the right console

Console Overview

The chart below provides an overview of our consoles along with the types of applications and venues they are suitable for. For detailed comparisons of console specifications please refer to the model comparison opposite. Full product information for each console can be found on pages 12-27.

	Product	Description	Suitable For	Venues & Applications	
Simple and Intuitive	Level 6 DMX	The Level 6 DMX is an excellent value manual lighting control desk and is perfect where minimal control is all that is required	Basic lighting applications and users with limited knowledge or experience	<ul style="list-style-type: none"> • Education • Dance Studios • Local Halls • Regional TV studios 	
	Juggler	Manual lighting control with timed cross fades and sequence functions	Basic lighting applications and users with limited knowledge or experience		
Mid-range Flexible consoles	Jester 12/24 Jester 24/48	Feature packed, entry level memory consoles for the mid level user	Programming and playback of conventional fixtures (dimming channels). Novice to mid level users	<ul style="list-style-type: none"> • Education • Small Theatre • Dance Studios • Local Halls • Corporate Events • TV • Live Music • Rental 	
	Jester ML24 Jester ML48	Feature packed, entry level memory consoles with added control of up to 30 moving lights	Programming and playback of conventional fixtures (dimming channels) and moving lights. Novice to mid level users		
	Jester TLXtra	Feature packed generic and moving light controller designed for theatrical applications	Programming and playback of conventional fixtures (dimming channels) and moving lights for traditional theatre style performances		
Fully Featured consoles running ZerOS	FLX	Compact, powerful and portable console with intuitive control of 2048 channels	Venues that host a variety of performance types (theatre, dance, live music, comedy, presentations etc) and have different levels of user experience	<ul style="list-style-type: none"> • Mid Scale Multi-purpose Venues • Rental Companies • Houses of Worship • Live Events • Theatre • TV • Education 	
	Solution	All round console that provides generic dimming control and capability for up to 200 moving lights	Venues that host a variety of performance types (theatre, dance, live music, comedy, presentations etc) and have different levels of user experience		
	Solution XL	Larger all round console with 296 devices and 600 submasters	Venues that host a variety of performance types (theatre, dance, live music, comedy, presentations etc) and have different levels of user experience		
	ORB XF	Advanced theatrical lighting console with upto 4096 channels, fader control and live submaster playback	Professional theatre operators requiring sophisticated programming of complex lighting rigs and hands on control for live events		
	SCD Server & SCD Server Pro	Fully-equipped 19" Rack Mount DMX Lighting Control Playback Unit	Racking backup for ZerOS Lighting consoles, Stand-alone DMX replay unit with external triggering, DMX Integration with iLight architectural control systems		
				<ul style="list-style-type: none"> • Console backup • Theme Parks • Facades • Archtainment • Leisure Installations 	

Console Features



Features	Level 6	Juggler	Jester 12/24 Jester 24/48	Jester ML24 Jester ML48	Jester TLXtra	FLX	Solution Solution XL	ORB XF	SCD Server SCD Server Pro
Number of Channel Faders	6	24	24/48	24/48	0	24	48/96	60	0
Total Number of Channels	6	24	24/48	24/48 + 30**	200 + 30**	2048	48/96 + 200**	2048 (4096***)	1024/2048 (4096***)
Number of DMX Universes	1	1	1	1	1	2 (4***)	4	4 (8***)	2/4 (8***)
Single Preset Operation	✓	✓	✓	✓			✓		
Two Preset Operation		✓	✓	✓			✓		
Wide Mode		✓	✓	✓			✓		
Flash Buttons		✓	✓	✓	✓	✓	✓	✓ 60	
Chases		✓	✓	✓	✓	✓	✓	✓	✓
Sequence Master		✓							
Memory Master		✓	✓	✓	✓		✓		
Speed Control		✓	✓	✓ (via wheels)	✓ (via wheels)	✓ (via wheels)	✓ (via wheels)	✓ (via wheels)	
Grand Master	✓	✓	✓	✓	✓	✓	✓	✓	
Submasters			24/48	480/960	200	****	600 via DMX in	1200	
Multi Function Faders						✓		✓ 60	
Go Button Playback (Cue Stack)			✓	✓	✓		✓	✓	✓
Additional Playback Stacks						✓ 240		✓	✓
Playback Master Fader						✓	✓	✓	
Auxiliary control			✓				✓	✓	✓
On Board Help			✓	✓	✓	✓	✓	✓	✓
Moving Light Control				✓	✓	✓	✓	✓	✓
Number of Moving Lights				30	30	unlimited*	248/296	unlimited*	unlimited*
Effects System				✓	✓	✓	✓	✓	✓
On Board Fixture Library				✓	✓	✓	✓	✓	✓
Colour Picker						✓	✓	✓	✓
Colour, Beamshape & Position Palletes				30 each	30 each	240 each	400 each	1000 each	1000 each
Effects Palletes						240	400	1000	1000
Groups					30	240	400	1000	1000
Macros					30	240	400	1000	1000
USB Storage			✓	✓	✓	✓	✓	✓	✓
MIDI			✓	✓	✓	✓	via upgrade	✓	✓
Number of Monitor Ports			1	1	1	1	1	2	1
Type of Monitor Port			VGA	VGA	VGA	DVI-D	XGA	XGA	XGA
Multifunction Keys				✓	✓		✓		
User Definable Keys						✓		✓	
Tracking						✓	✓	✓	✓
DMX In			✓	✓	✓		✓	✓	✓
RDM Enabled				✓	✓	✓	✓	✓	✓
ZerOS Software						✓	✓	✓	✓

* Limited by DMX channels

** Moving Light Channels

***Via Ethernet

****Functionality via Playbacks

Lighting Console Operating Software

ZerOS



ZerOS is the operating system for all premium lighting consoles from Zero 88. Continuously updated and developed using Linux and a familiar window based navigation system, ZerOS is user friendly and can easily be customised to any operators individual way of working.

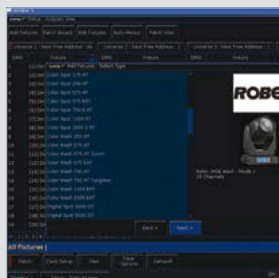
Colour Control

ZerOS offers comprehensive colour control through on-screen colour pickers, as well as a library of colour filters to provide instant lookup.



Fixture Library

A comprehensive library of fixtures is provided with ZerOS, allowing control of any fixture regardless of manufacturer or type.



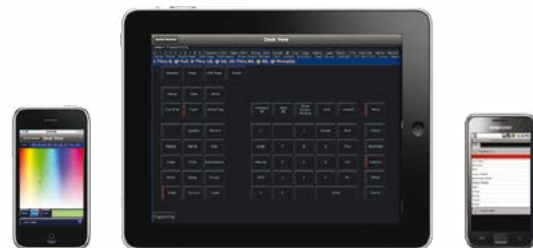
Advanced Networking

ZerOS supports multiple networking protocols including sACN and Art-Net output, plus an optional tracking backup system.



ZerOS Key Features

- Select fixtures via individual channels or groups
- Adjust individual parameters manually via wheels
- Quickly select parameter palettes including Colour, Beam, Position and Effects
- Pan/Tilt control via fullscreen X/Y grid
- Colour Picker and RGB/CMY/HSV faders
- Select gobos via on screen image picker
- Record and edit cues and submasters, including fade times and delays
- RDM ready for patching, configuring and monitoring compatible devices
- Remote available for iOS® and Android™ devices
- Tracking Backup function from other ZerOS consoles or Phantom ZerOS, offline editor



ZerOS Remotes

Remote applications are available to run on iPhone®, iPod Touch®, iPad® and Android™ devices for seamless, wireless control of your ZerOS family lighting console.

ZerOS remotes are ideal to use as a remote focus/console unit during fit ups, focus and plotting sessions, and provide quick and simple control of both generic dimmers and moving lights.



Phantom ZerOS

Phantom ZerOS is the offline editor for the ZerOS family consoles and provides full desk functionality from a standard Windows PC. Show files can be loaded from USB, manipulated using the standard desk controls and then re-saved as required. The ZerOS software is fully functional meaning you can use colour pickers, export showfiles to CSV files, and even connect to visualisation software from within your PC.

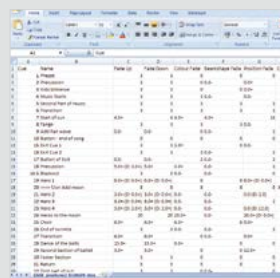
Phantom ZerOS Key Features

- Offline Editor for all ZerOS consoles
- PC Based Software
- Ethernet output via optional Unlock dongle
- Pre-programming and offline editing of show files
- Import of show files from ASCII show file and original Frog consoles
- Export csv show files for production paperwork
- Connects to all industry standard visualization packages



Unlock Dongle

An optional unlock dongle can be added to Phantom ZerOS to unlock Ethernet based DMX outputs.



Offline Editing

Full show files can be loaded into Phantom ZerOS through your PC and manipulated as if you were on a real console.



Tracking Backup

Phantom ZerOS can work as a tracking backup option to the main ZerOS consoles, to synchronise show files over a network.

Lighting Consoles

ORB XF



ZerOS Operating Software

ZerOS offers up to 8 universes of control, with a clean, simple user interface and advanced features including a colour picker, moving light library, gobo images, part cues and touch screen support.



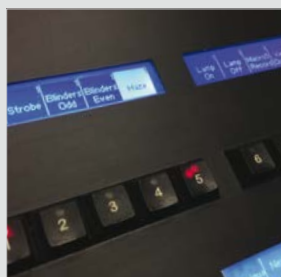
Multi Function Faders

Get hands on. The 60 multifunction faders can be assigned as channel faders (to control all 2048 channels), submasters or full cue stacks with go buttons.



User Definable Keys

Instant access to what you use most. The 10 User Definable Keys can be assigned as Channels, Groups, Palettes, Macros, Scenes or Views, across 20 pages, for the ultimate flexibility and control.



With a combination of theatrical control philosophy and an adaptable hardware platform, the ORB XF provides intuitive control of both generic dimmers and moving lights.

The ORB XF supports 2048 (upgradeable to 4096) control channels, multiple playback stacks and is fitted with custom designed encoder wheels for dimmer and fixture control. Utilising a numeric keypad, integrated track ball, automatic palettes and syntax keys, programming on the ORB XF is familiar to both beginners and experienced professionals. Further software features include onscreen colour pickers, gobo image display, and a sleek clear user interface, which brings the latest in lighting control technology to your fingertips.

Experience

The design behind the ORB XF is centred upon usability. From day one you'll find the interface familiar, simple and easy to understand. Ergonomic layout of the front panel controls, combined with clear and concise monitor displays, make the ORB XF experience one you'll keep coming back to.

Performance

Built on the ZerOS platform, users of the ORB XF can sit safe in the knowledge that shows around the world rely on ZerOS every day. Features within the software simplify both the programming and playback of even the most complex shows, whilst dedicated tracking backups and offline editors provide the ultimate piece of mind for mission critical productions.

Flexibility

Targeting flexibility as the number one design aim, the ORB XF has achieved a truly user configurable operating experience. Create your own monitor displays, layout your front panel controls as you require and define the behaviours that suit your show - the choice really is up to you.



Key Features

- Familiar Command Line interface
- 60 Multi-Functional Faders and 10 User-Definable Keys
- 1000 Cue Stacks, each with up to 10000 Cues
- Master Playback with 2 Playback faders and Go Button playback
- Tracking and Move on Dark settings available on each cue stack
- Automatic creation of palettes, groups and fixture macros
- Fully customisable effects engine
- Colour picker, colour filter library, pan / tilt grid and gobo images
- Integrated trackball and encoder wheels for precise fixture control
- 1000 each of Colour, Beamshape, Position and Effect Palettes
- 1000 Groups and 1000 User Definable Macros
- Dimensions: 150 (H) x 1000 (W) x 429mm (D)
- Weight: 17Kg / 37.4lb

Support For

- 2048 Control Channels (upgradable to 4096), fully patchable via either 4 x 5 Pin XLR connectors or Ethernet (sACN or Art-Net)
- Remote Device Management (RDM) ready
- Thousands of fixtures through the onboard fixture library, updated regularly
- iOS and Android devices through dedicated applications
- Tracking Backup and popular visualisers over Ethernet
- 2 x XGA monitors, and support for Touch Screen displays
- Software updates, show backups and connection of accessories via the 4 Onboard USB ports
- Midi Notes, Midi Timecode and Midi Show Control (MSC).
- SMPTE, Sound to Light, Remote inputs, DMX In and CAN



Command Syntax

Follow designated Syntax Keys for additional functions such as Park, Knockout and Time Triggers. A user assignable 'spare' key puts your favourite command at your fingertips.



Touchscreen Support

Up to two external touchscreen monitors can be added via USB to allow for instant hands on selection of palettes, groups and settings to speed up operation.

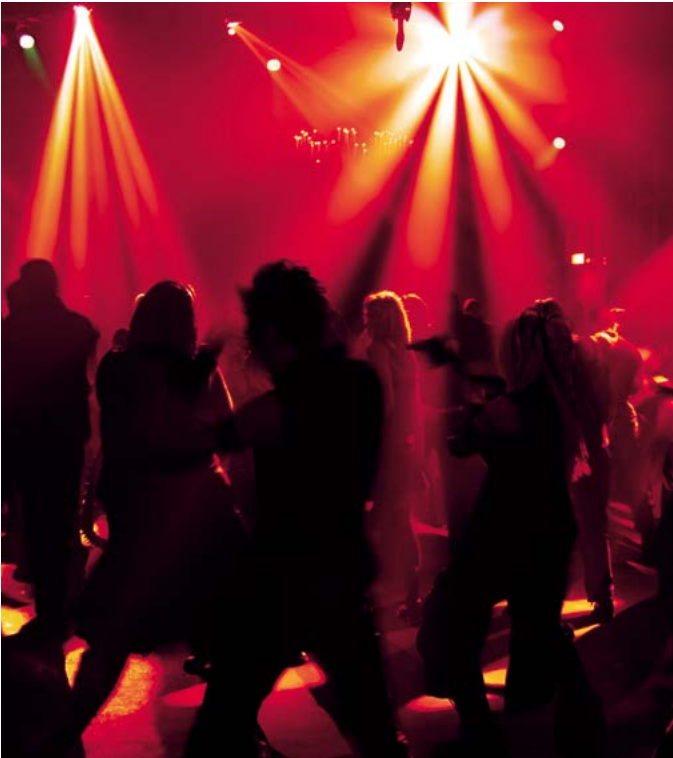


Networking

Full networking capability, including sACN, Art-Net, support for popular visualisers, wireless mobile apps (iOS and Android), Tracking Backup and Ethernet Wings.

Lighting Consoles

Solution & Solution XL



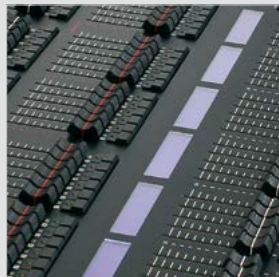
ZerOS Operating Software

ZerOS offers up to 4 universes of control, with a clean, simple user interface and advanced features including a colour picker, moving light library, gobo images and touch screen support.



Channel Faders

48 or 96 faders provide intuitive hands on control of all your dimming channels.



Submasters

10 or 30 submaster faders offer manual adjustment of scenes and chases on the fly.



The Solution & Solution XL from Zero 88 are comprehensive multi-purpose lighting consoles, running the powerful ZerOS operating software.

Simple:

Solution & Solution XL provide simple clear progressions, from basic two preset generic control through to moving light and LED control. Hands on control with submasters and channel faders combine with a powerful theatre stack to enable any type of show.

- Channel faders for hands on control
- LCDs for clear easy to read information display
- Wizard driven patching to guide you through the process
- Full online help

Flexible:

The flexible front panel with cue stack, submasters and live controls allow the Solution consoles to be adapted to multipurpose venues where the requirements change daily. From simple moving light patching to powerful offset effects, the Solution & Solution XL have been designed with flexibility at their core.

- Advanced comprehensive fixture library
- Remote applications for wireless control
- Rate control, tap tempo and sound to light chases
- Move on Dark for cue lists

Professional:

Featuring ZerOS software, the Solution consoles offer powerful adjustment of complex effects, a tracking cue stack and adjustable user preferences to enable full professional programming options. Advanced palette references, tracking updates and remote tracking backup options mean you can rely on the Solution consoles to grow as your requirements do.

- Support for all major visualisation packages
- Ethernet output of DMX
- Remote Device Management (RDM) ready



Whether you require a solution for simple shows or major professional productions, the Solution & Solution XL are flexible and configurable to provide the controls you need when you need them.

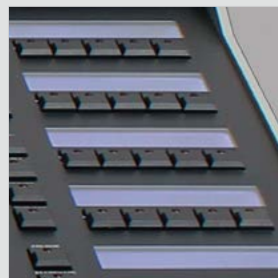
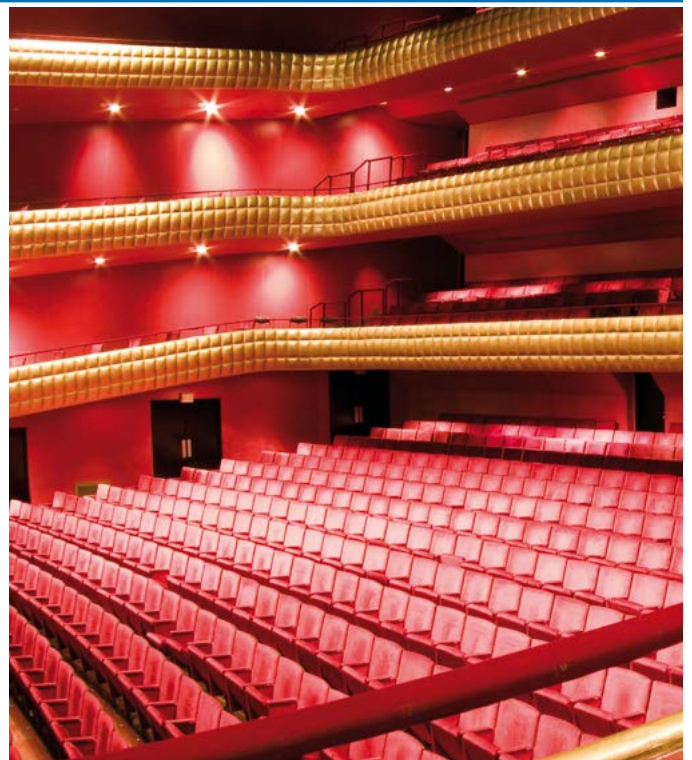
Designed to be easy to understand, yet adaptable enough to cope with even the largest lighting systems, Solution consoles make controlling your entire system as easy as turning on your house lights.

Key Features

- Submaster faders for scene or chase playback
- Memory stack for full theatrical playback
- Tracking and auto Move on Dark
- Automatic creation of palettes, groups and fixture macros
- Fully customisable effects engine and Sound to Light functionality
- Colour picker, colour filter library, pan / tilt grid and gobo images
- Ergonomic control wheels for precise moving light control
- 400 each of Colour, Beamshape, Position and Effect Palettes
- 400 Groups and 400 User Definable Macros
- Dimensions: 115 (H) x 765 (W) x 575mm (D)
Solution XL: 115 (H) x 1205 (W) x 575mm (W)
- Weight: 16Kg / 35lb
Solution XL: 26Kg / 57lb

Support For

- 248 (or 296) devices across four DMX universes via 4 x 5 Pin XLR and Ethernet
- Thousands of fixtures through the onboard fixture library, updated regularly
- iOS and Android devices through dedicated applications
- Shows cross loadable with other ZerOS consoles and importable from Frog Series and ASCII format
- Tracking Backup and popular visualisers over Ethernet
- 1 x XGA monitors, and support for Touch Screen displays
- Software updates, show backups and connection of accessories via the onboard USB ports
- Midi (Notes, Timecode and Show Control), SMPTE and Remote inputs via optional upgrade card



Multi-Functional Keys

The Solution consoles provide multi-functional keys with LCD displays to give you the information you need whenever you need it, and access to functions and settings throughout ZerOS.



Control Wheels

Three ergonomic control wheels are provided for fixture control, allowing simple intuitive control over Pan and Tilt with the thumb and first finger.



Networking

Full networking capability, including sACN, Art-Net, support for popular visualisers, wireless mobile apps (iOS and Android), Tracking Backup and Ethernet Wings.

Lighting Consoles

FLX



From design to manufacture, the FLX lighting console has been developed to work in a wide range of demanding situations, with specific considerations for live events & hire, touring productions, multi-purpose venues, theatres and educational applications.

Colour Picker

Colours can be quickly selected using the built in colour picker, or by selecting a colour from any image you wish - such as a photograph or company logo.



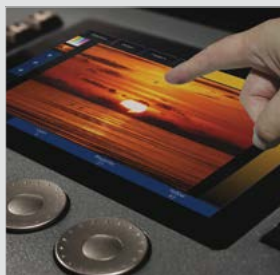
Filter Libraries

Built-in filter lookups from Lee, Rosco and Apollo help recreate colour filters, and "Mood Boards by LEE Filters" combine complimentary colours into groups such as "Anger", "Royalty" and "Love".



Multi-touch control

The built in 7" touch screen uses "Projected Capacitive Touch" (PCAP) technology, giving true multi touch capability.



FLX offers a new approach to console operation. With re-designed operating software, a host of shortcut keys and an intuitive on-board touchscreen, this console cuts down the time required to take control, allowing the user to have more time to be creative.

Tools such as Patch Wizard and Auto Palettes do all the prep work, and programming time is reduced with a simple three-step programming method – what you want, how you want it, where you want it. Important features required time and time again are directly accessible via the **Z** button.

A single button push switches the 24 on board faders between individual channel faders and any of the 240 playbacks – each of which can store full cue stacks and chases with individual GO button playback. Additional USB wings can be added to increase hands-on operation, and can be laid out in a variety of configurations.

The intuitive layout makes FLX feel instantly recognisable - complete with industry standard syntax and easy access fader-per-channel intensity control. FLX provides unlimited control of 2048 channels, with no fixture patch limitations.

User Definable Keys (UDK's) can be setup to quickly access additional functions (such as 'Highlight' and 'Rem Dim'), or be programmed to output anything from blinders and strobes, through to smoke machines, working lights or houselights.

FLX incorporates an internal capacitive colour touchscreen to speed up selection, programming and playback, intelligently responding to, and anticipating your next action to present all the relevant information, even when no external touchscreen is connected.



Software capacity

- 2,048 control channels
(over 4 universes of Artnet or sACN, and 2 DMX outputs)
- 241 Playbacks
(equivalent of Cue Stacks, Submasters or Chases)
- 10,000 cues
- 4 x 240 Palettes (Colour, Beam, Shape, Position)
- 240 Effect palettes, with fully customisable effects engine
- 240 groups
- 240 macros

Software features

- Familiar Command Line interface
- Colour picker, filter lookups, "Mood Boards by Lee Filters"
- Stage sizing and positioning
- Extensive fixture library from Carallon
- Auto palettes, groups and fixture macros
- Gobo previews and library
- Move on Dark
- Tracking options available
- Support for wireless remote control through handheld devices and remote monitors
- Support for Tracking Backup over Ethernet



Industry Standard Syntax

Whatever your background, FLX will feel instantly recognisable due to the industry standard, familiar syntax and intuitive fader-per-channel intensity control.



Designed to be tough

Featuring a metal body with dual skin construction and scratch resistant coating, FLX has been designed to perform in the toughest of environments.



Back up

Integrated "Fe-RAM" stores every button press made to ensure no data is lost, and FLX can fully back itself up to a second console or SCD Server Pro.

Lighting Consoles

ZerOS Wing



ZerOS Wing can be added onto any ZerOS console, or Phantom ZerOS - the offline PC editor, to increase the number of channel playback faders available.

Multiples of 24

Each ZerOS Wing has 24 multifunctional faders and 24 flash buttons. Multiple ZerOS Wings can be plugged in at any one time, increasing the hands-on operation of any ZerOS console.



ZerOS Wing has been designed to be simple and quick to setup and use. There are no settings, no configuration and no difficult connections. Just plug in via USB and any ZerOS console is instantly upgraded.

A single button switches quickly between 'Channels' and 'Playbacks' at any time, and the 'Page Up' and 'Page Down' buttons are used to either switch between all patched channels on the console, or each page of playbacks. When multiple wings are used, simply setup each Wing onto a different page.

'Fader Function' will operate slightly differently on some ZerOS consoles, as shown by the table below. Phantom ZerOS will match whichever console is chosen when the software is loaded.

Multifunctional

Faders on ZerOS Wing can be switched between 'Channels' and 'Playbacks' at the touch of a button. They'll even automatically switch when you're ready to record a cue.



	'Channels'	'Playbacks'
ORB XF	Individual Channels	Playbacks
ORB*	Individual Channels	Playbacks
Solution & Solution XL	Individual Channels	Submasters
FLX	Individual Channels	Playbacks
Leapfrog 48 & 96*	Individual Channels	Submasters
Frog 2*	Individual Channels	Playbacks

*Legacy Products

Quick Setup

Wings can be plugged into any ZerOS Console, or laptop running Phantom ZerOS, by simply plugging in a USB cable. With the use of the 'Fader Function' and 'Page Up/Down' buttons, setup is complete.



SCD Server & SCD Server Pro



The SCD Server is a rackmounted, fully featured, lighting control system ideal for use in larger performance installations and networks where show replay, tracking backup or standalone operation is required.

SCD Server runs ZerOS - a powerful and proven lighting control application designed for the control of all types of performance lighting including LED, intelligent moving lights, media servers, effects and traditional theatrical lighting fixtures and dimmers.

SCD Server features DMX input and capture along with interfaces to MIDI, ArtNet, streaming ACN and contact closures as well as acting as an iLight iCAN network device within a distributed intelligence architectural lighting network.

Tracking backup & Event Controller

- 19" Lighting Control System based upon the ZerOS operating system
- 1024/2048 Control channels, fully patchable to 2/4 DMX Universes (DMX Output via 5 Pin XLR or via Ethernet)
- Optional 4096 channel capacity with SCD Server Pro
- Cue Stack Sequence Playback
- Effects engine
- Colour, Beamshape, Position and Effect Palettes
- Integrated colour picker (CMY, RGB and HSV)
- Auto palettes, groups and macros
- 4x Onboard USB ports for software updates, show backups and connection of accessories
- XGA Monitor Output
- Onboard fixture library
- Support for remote control through handheld devices and remote monitors (iPhone, iPad and Android devices)
- DMX 512 Input
- 6 Channel Close Contact trigger
- MIDI & SMPTE Timecode
- Sound to Light Input

Architectural System Integration

- iCANnet™ inputs (Can-Bus) for system intergration with control panels, touch screens or other iCAN network devices
- Simple patching of blocks of 128 Channels to iCAN areas
- DMX addressable per channel
- iCANnet™ supports multiple SCD Servers



ZerOS Operating Software

ZerOS offers up to 8 universes of control, with a clean, simple user interface and advanced features including a colour picker, moving light library, gobo images, part cues and touch screen support.



Show Backup and Replay

Full tracking backup for all ZerOS consoles and powerful show replay capacity with LCD display for instant confirmation of cue information and status.



Wide Connectivity

DMX over Ethernet (Art-Net and sACN), support for popular visualisers, iOS and Android apps, Midi (Notes, Timecode and Show Control), SMPTE, Sound to Light, Remote inputs, DMX In and CAN.

Lighting Consoles

Jester TLXtra



Keypad

A keypad allows for speedy selection of large numbers of channels, with Groups and Macros to speed up programming.



USB Port

A USB port allows for show storage onto standard USB memory sticks (not supplied) as well as USB desk lamps.



VGA Monitor Output

On-board VGA monitor output provides clear text display of Memories and Submasters, together with channel levels and command line data.



The Jester TLXtra is the right lighting control choice for up to 200 dimmer channels and 30 fixtures. Operation is by numeric keypad using industry standard command syntax; making the Jester TLXtra an excellent choice for theatrical and performance venues where consistent show playback is paramount.

A built in monitor port enables simple and convenient operation with channel, fixture, cuestack and submaster data all viewable using the monitor. The desk can even be operated using the built in LCD displays without a monitor if needed. Playback is by a traditional theatre playback stack, or from the 10 submaster faders.

Jester TLXtra also features an effects system, recorded pallets and an extensive library of fixture personalities - making it an exciting and powerful theatrical control package that performs and delivers.

Key Features

- Playback stack
- Patching to 512 DMX channels
- DMX in allowing snapshots of all 512 DMX channels
- VGA Monitor Port
- USB storage and keyboard support
- MIDI Notes & Show Control
- Lock Function
- LCD Display for stand-alone use
- Online Help in multiple languages
- Offline Editor (Phantom Jester)
- Remote triggers
- RDM enabled
- Upgradeable firmware
- External power supply
- 200 dimmer channels
- 30 fixtures
- 30 each of Colour, Position and Beamshape Palettes
- Playback stack with programmable times
- 200 Submasters (20 pages of 10) on local faders
- 480 Submasters (20 pages of 24) controlled from Multi-Function-Buttons or DMX Input
- Comprehensive Fixture Library
- Moving light effects system
- Dimensions: 90 (H) x 710 (W) x 278mm (D)
- Weight: 6.5Kg / 14.5lb

Jester ML48



The Jester ML48 brings greater control and flexibility to mixed lighting applications using up to 30 moving lights and 48 dimmer channels. Featuring an effects system, recorded pallets, and an extensive library of fixture personalities, the Jester ML48 is an ideal choice for rental or mid sized venues with mixed lighting needs.

The Jester ML48 also offers direct control of up to 48 dimmer channels. Show playback is either via submasters or through a traditional theatrical cue stack.

Choose from preset, program or playback mode, add effects, and conventional fader control to tailor the way you operate your moving lights, colour changers and dimming to deliver exactly what you need, show after show.

Key Features

- Playback stack
- Patching to 512 DMX channels
- DMX in allowing snapshots of all 512 DMX channels
- VGA Monitor Port
- USB storage and keyboard support
- MIDI Notes & Show Control
- Lock Function
- LCD Display for stand-alone use
- Online Help in multiple languages
- Offline Editor (Phantom Jester)
- Remote triggers
- RDM enabled
- Upgradeable firmware
- External power supply
- 30 Fixtures
- 24/48 channels of control
- 20 x 48 Submasters
- 30 each of Colour, Position and Beamshape Palettes
- Comprehensive Fixture Library
- Moving light effects system
- Dimensions: 90 (H) x 970 (W) x 278mm (D)
- Weight: 12Kg / 26.5lb



48 Channels

As well as providing control for up to 30 fixtures, the Jester ML48 offers hands on fader control for up to 48 dimmer channels.



Monitor Support

Monitor outputs are standard on the Jester Series - plug in a PC monitor with a VGA cable and expand your displays.



RDM

All Jester ML & TL consoles support RDM, the industry standard for remote device configuration and management.

Lighting Consoles

Jester ML24



Control Wheels

Three integrated control wheels allow for precise moving light control and flexible adjustment of colours, gobos and fade times.



USB Port

The integrated USB port allows for storage of show files onto USB memory sticks (not supplied) and USB desk lamps (not supplied).



RDM

Jester ML & TL Series consoles support RDM, the new standard for remote device configuration and management.



The Jester ML24 is a powerful performer across rock, theatre and corporate lighting presentations. The console offers users a cost effective solution for control of up to 30 moving lights and 24 dimmer channels. Featuring an effects system, recorded palettes, and an extensive library of fixture personalities, the Jester ML24 is an ideal choice for mixed lighting venues.

The Jester ML24 also offers additional direct control of 24 dimmer channels. Show playback is either via the submasters or through a traditional theatrical cue stack.

The three operating modes feature control in preset, program or playback, including using a traditional theatre playback stack. So whether you are using moving lights, colour changers, effects or conventional dimming, alone or in combination, the Jester ML24 will deliver.

Key Features

- Playback stack
- Patching to 512 DMX channels
- DMX in allowing snapshots of all 512 DMX channels
- VGA Monitor Port
- USB storage and keyboard support
- MIDI Notes & Show Control
- Lock Function
- LCD Display for stand-alone use
- Online Help in multiple languages
- Offline Editor (Phantom Jester)
- Remote triggers
- RDM enabled
- Upgradeable firmware
- External power supply
- 30 Fixtures
- 12/24 channels of control
- 20 x 24 Submasters
- 30 each of Colour, Position and Beamshape Palettes
- Comprehensive Fixture Library
- Moving light effects system
- Dimensions: 90 (H) x 710 (W) x 278mm (D)
- Weight: 6.5Kg / 14.5lb

Jester 24/48



Jester 24/48 is perfect for small to medium show lighting applications where a greater channel count is needed. With a wide range of features, intuitive operation and great value, Jester 24/48 delivers outstanding performance show after show.

The three operating modes feature control in preset, program or playback, including using a traditional theatre playback stack. The Jester 24/48 is a fully functional memory console complimented with on-board LCD display and plug-in monitor port as standard.

With 24 auxiliary buttons used to trigger DMX devices such as scrollers, smoke machines or strobes, MIDI capabilities, a USB port to backup shows and even a DMX In port for snapshot/backup use, the Jester 24/48 delivers a truly wide user appeal.

Key Features

- Playback stack
- Patching to 512 DMX channels
- DMX in allowing snapshots of all 512 DMX channels
- VGA Monitor Port
- USB storage and keyboard support
- MIDI Notes & Show Control
- Lock Function
- LCD Display for stand-alone use
- Online Help in multiple languages
- Offline Editor (Phantom Jester)
- Remote triggers
- Upgradeable firmware
- External power supply
- 24/48 channels of control
- 48 Submasters
- 24 Auxiliary Buttons
- Dimensions: 90 (H) x 710 (W) x 278mm (D)
- Weight: 6.5Kg / 14.5lb



Backups

Show files can be backed up onto a standard USB memory stick, providing an easy way to keep your show file safe.



MIDI

All Jester Series consoles support MIDI for both notes and MSC Show Control messages, for externally triggered shows.



Monitor Support

Monitor outputs are standard on the Jester Series - plug in a PC monitor with a VGA cable and expand your displays.

Lighting Consoles

Jester 12/24 19" Rack Mount



Rack Mountable

The Jester 12/24 19" Rack Mount fits a standard 19" equipment rack, allowing it to be mounted alongside other equipment.



USB Keyboard

A USB keyboard is supported by all the Jester consoles, allowing memories and submasters to be simply named using a standard QWERTY keyboard.



Auxiliary Control

12 Auxiliary Buttons allow expanded control of DMX effects such as strobes and smoke machines.



Jester 12/24 19" Rack Mount version has been tailored specifically for mounting in 19" racks making this unit perfect for installation where space is at a premium. Users include TV and video studios, clubs, small rental and AV applications. The Jester 12/24 19" Rack Mount is simple to use and delivers great features in a very compact package.

The three operating modes feature control in preset, program or playback, including using a traditional theatre playback stack. The Jester 12/24 19" Rack Mount is a fully functional memory console complimented with on-board LCD display and plug-in monitor port as standard.

With 12 auxiliary buttons used to trigger DMX devices such as scrollers, smoke machines or strobes, MIDI capabilities, a USB port to back up shows and even a DMX In port for snapshot/backup use, the Jester 12/24 19" Rack Mount is truly a powerful and affordable choice.

Key Features

- 19" Rack Mount
- Playback stack
- Patching to 512 DMX channels
- DMX in allowing snapshots of all 512 DMX channels
- VGA Monitor Port
- USB storage and keyboard support
- MIDI Notes & Show Control
- Lock Function
- LCD Display for stand-alone use
- Online Help in multiple languages
- Offline Editor (Phantom Jester)
- Remote triggers
- Upgradeable firmware
- External power supply
- 12/24 channels of control
- 24 Submasters
- 12 Auxiliary Buttons
- Dimensions: 90 (H) x 483 (W) x 278mm (D)
- Weight: 4.5Kg / 10lb



Jester 12/24 is an ideal console for live and recorded playback control in smaller performance venues. With a rich but easy to use feature set, the Jester 12/24 delivers more than you would expect in a compact package.

The three operating modes feature control in preset, program or playback including using a traditional theatre playback stack. The Jester 12/24 is a fully functional memory console complimented with on-board LCD display and plug-in monitor port as standard.

With 12 auxiliary buttons used to trigger DMX devices such as scrollers, smoke machines or strobes, MIDI capabilities, a USB port to back up shows and even a DMX In port for snapshot/backup use, the Jester 12/24 is truly a powerful and affordable choice.

Key Features

- Playback stack
- Patching to 512 DMX channels
- DMX in allowing snapshots of all 512 DMX channels
- VGA Monitor Port
- USB storage and keyboard support
- MIDI Notes & Show Control
- Lock Function
- LCD Display for stand-alone use
- Online Help in multiple languages
- Offline Editor (Phantom Jester)
- Remote triggers
- Upgradeable firmware
- External power supply
- 12/24 channels of control
- 24 Submasters
- 12 Auxillary Buttons
- Dimensions: 90 (H) x 452 (W) x 278mm (D)
- Weight: 4.5Kg / 10lb



Hands On Control

Hands on control is simple with all the Jester consoles. Individual faders are provided for each dimmer channel.



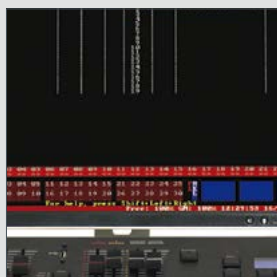
Show Backup

Showfiles can be backed up onto a standard USB memory stick, providing an easy way to keep your show file safe.



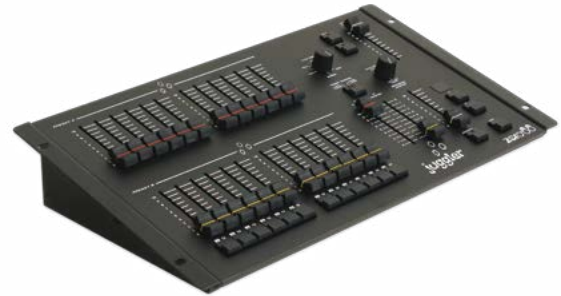
Monitor Outputs

Monitor outputs are standard on all the Jester consoles – plug in a PC monitor with a VGA cable and expand your displays.



Lighting Consoles

Juggler



Faders

The Juggler is simple to control – faders on the front panel are laid out to be easy to use, for hands on control.



Juggler is a manual lighting control desk specifically designed for the smaller stage; a perfect solution for small scale lighting systems. Channel faders are set in a conventional two preset layout for easy crossfading. A fade time control allows smooth fades to be achieved over periods as long as 5 minutes. All crossfades are true dipless - This ability to hold constant lighting levels and varying fade times allows sophisticated lighting plots to be replayed simply and accurately.

Juggler controls up to 24 channels using preset faders avoiding the cost and complexity of more sophisticated lighting desks. Applications include schools, houses of worship, rental and conference events.

For larger shows, the wide mode feature allows 24-channel operation, with an internal scene store for two-preset operation. 12 sequences of 99 steps can be stepped manually to provide a simple cue list with go button functionality. Sequences may also be chased using the adjustable speed control.

Connection

Connection of the Juggler couldn't be simpler – plug in your DMX cable and PSU (supplied) and away you go.



Sequence Memories

Basic sequences can be programmed on the Juggler using the in built sequence memories.



Key Features

- Two Preset Operation
- 12/24 Channels
- Flash Buttons
- 12 Sequences of 99 Steps
- Multiple Channels per Step
- Sequence Master
- 19" Rack Mounting
- Fade Timer
- Speed Control
- True Dipless Crossfade
- Grand Master
- Wide Mode
- Dimensions: 88 (H) x 483 (W) x 279mm (D)
- Weight: 4.5Kg / 10lb

Level 6 DMX



Level 6 DMX is designed to be a simple and intuitive small lighting desk, making it ideal for DMX control applications as diverse as schools, meeting rooms and museums.

Featuring six channel faders and an overall master – the Level 6 DMX is convenient for hand held operation or alternatively fixed to a wall. Direct fader control also makes it useful for simple control of 2 RGB colour mixing groups or even used for testing and providing DMX control. A localised power supply is included in the package.

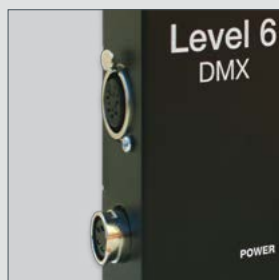
Key Features

- 6 Channel Manual Lighting Console
- Single preset operation
- Grand Master
- DMX Control
- Rugged case
- Power LED
- Dimensions: 53 (H) x 222 (W) x 110mm (D)
- Weight: 0.9Kg / 2.0lb



6 Channels

6 channel faders allow for smooth fading of individual DMX channels.



Simple Connectivity

Simple connectivity with only power supply and DMX output required.

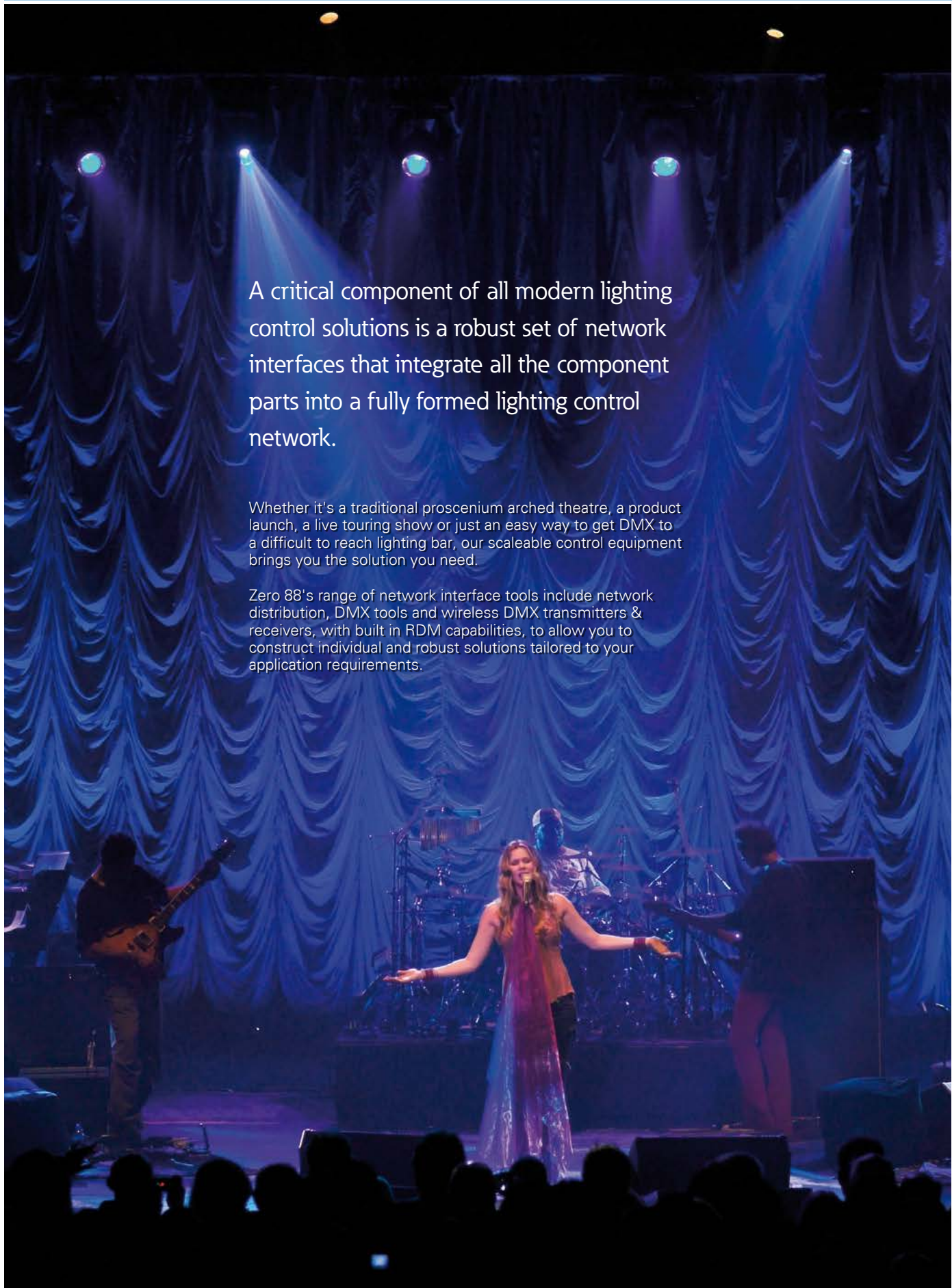


Grand Master

A grand master fader controls all 6 channels, fading them relative to their current level.

Network & Data Distribution

Scaleable System Solutions

A photograph of a stage performance. A woman in a long, flowing, iridescent dress stands in the center, arms outstretched. To her left, a guitarist is visible. Behind her, a drummer is partially obscured. To her right, another person is partially visible. The stage is lit with several spotlights from above, creating beams of light. The backdrop is a large, dark blue, pleated curtain. The foreground shows the silhouettes of an audience.

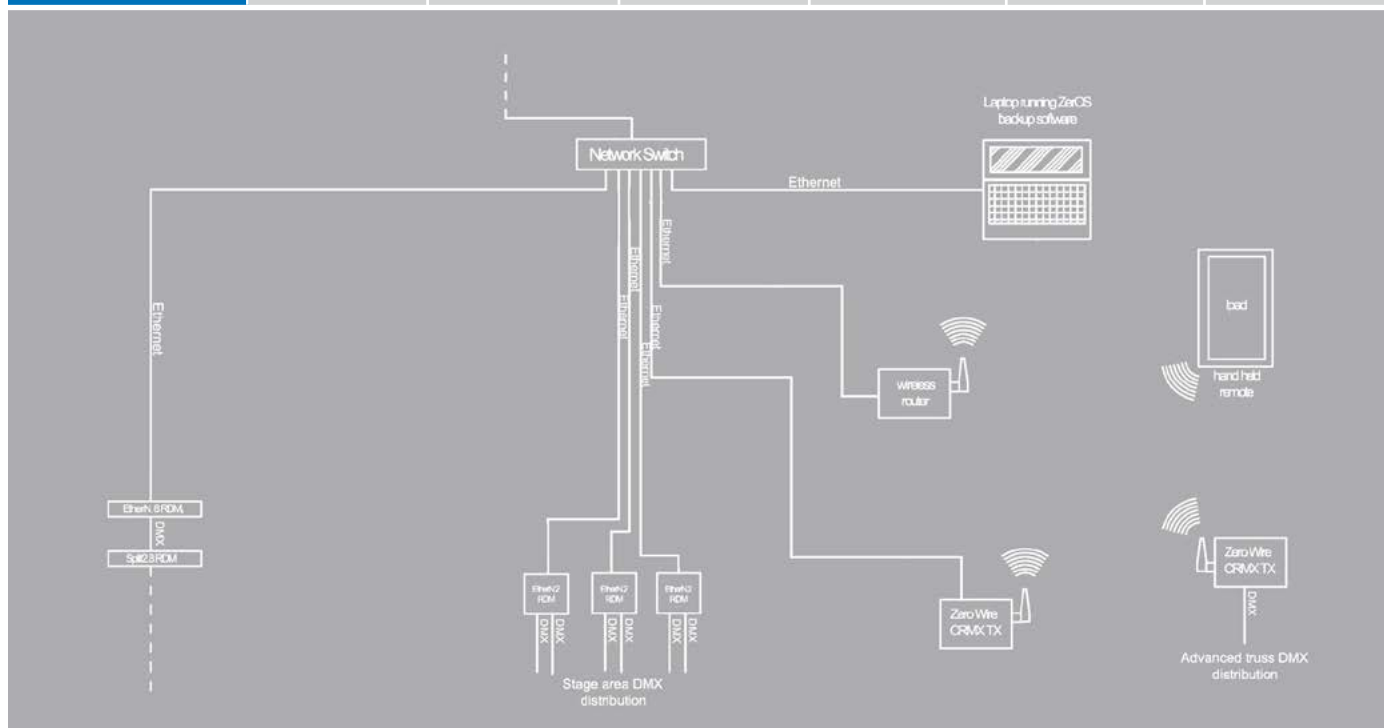
A critical component of all modern lighting control solutions is a robust set of network interfaces that integrate all the component parts into a fully formed lighting control network.

Whether it's a traditional proscenium arched theatre, a product launch, a live touring show or just an easy way to get DMX to a difficult to reach lighting bar, our scalable control equipment brings you the solution you need.

Zero 88's range of network interface tools include network distribution, DMX tools and wireless DMX transmitters & receivers, with built in RDM capabilities, to allow you to construct individual and robust solutions tailored to your application requirements.



Features	Demux 24	ZeroWire CRMX	1 Universe Ethernet Box	Split2.8 RDM	EtherN.2 RDM	EtherN.8 RDM
DMX In	✓	✓	✓	✓		
DMX Thru	✓			✓		
DMX Out		✓	✓	✓	✓	✓
Ethernet		✓	✓		✓	✓
Analogue Outputs	✓					
Rack Mount	✓			✓		✓
Desk Mount	✓	✓	✓	✓	✓	✓
Wall Mount					✓	
Truss Mount		✓	✓		✓	
RDM Enabled		✓		✓	✓	✓
DeMultiplexor (Demux)	✓					
Wireless DMX		✓				
DMX Splitter				✓		
Ethernet to DMX		✓	✓		✓	✓
Power over Ethernet		✓			✓	
Configuration Software		✓	✓		✓	✓
ZerOS Configuration		✓	✓		✓	✓



Network & Data Distribution

Demux 24



Outputs

The Demux 24 offers four switchable outputs of +10v or -10v analogue control.



The Demux 24 is a 24 channel, rack mounted DMX to Analogue converter. Manufactured to the highest professional standards, the Demux 24 offers users the ability to use legacy analogue equipment with more modern DMX512 controllers. It is possible to select individual analogue output sockets as either negative or positive control voltage (+/- 10V), for maximum flexibility.

The Demux 24 also allows for the storage of 12 memories that can be manually played back using the integral user interface on the front of the unit. The internal switch mode power supply provides worldwide voltage support.

User Interface

A simple user interface allows adjustment of DMX address and individual channel settings.



Demux 24 can be found in venues where analogue dimming equipment already exists, to provide an upgrade route for control desks without the need to replace the entire control system.

Key Features

- Patchable per socket to DMX (per block of 6 channels)
- Voltage polarity selectable per socket (block of 6 channels)
- Preheat and Dimmer Law selectable per channel
- 12 programmable backup memories
- Manual level control
- Isolated DMX input with termination option
- Lock and Reset functions
- DMX Status indication
- Dimensions: 44 (H) x 482 (W) x 128mm (D)
- Weight: 3Kg / 6.6lb

19" Rack Mount

The 19" form factor allows the Demux 24 to be mounted alongside dimmer racks and other devices in equipment racks.



ZeroWire CRMX



Based on the first automated and adaptive wireless technology developed specifically for the lighting industry - the ZeroWire CRMX brings a new level of assurance to wireless DMX systems.

CRMX is the first system to continuously scan the radio spectrum and adapt to the best frequency without interruption. This avoids both interference in the increasingly crowded license free radio sphere, as well as helps to maximize the performance of all the other radio systems sharing those frequencies. In short, it's a smart radio that adapts. Add RDM and a rugged enclosure suitable to the demands of the entertainment and archtainment industry and the package is complete.

Key Features

- Automated Cognitive Coexistence CRMX wireless transmissions never disturb, or are disturbed by, other wireless equipment. This fully automated feature offers unrivaled convenience and peace of mind during operation
- Fidelity - The DMX frame output is identical to the frame input
- Error correction - Advanced algorithms recreate corrupt or lost radio packets
- Compliance - Non-compliant DMX is corrected to meet the DMX512-A standard
- Synchronization - Precision timing mechanism guarantees synchronized frame delivery
- Latency - Industry best; 5ms even in multi-universe systems
- Ethernet support - Art-Net I & II and Streaming ACN (draft & final) protocols
- RDM Enabled
- Ease of use - One button simplifies all setup
- Ease of mounting - Multiple mounting options facilitate easy rigging or rack mounting
- Security - 128 bit encryption ensures no hacker interference
- Legacy support - ZeroWire CRMX receivers are compatible with all CRMX systems and legacy W-DMX™ systems^[1]
- Upgradeable - Software and firmware available from our website
- Dimensions: 44 (H) x 110 (W) x 128mm (D)
- Weight: 0.8Kg / 1.76lb

[1] CRMX systems are capable of receiving W-DMX data G3 and below, and from G4 systems running in G3 mode.



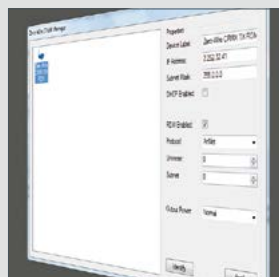
Flexible

ZeroWire CRMX is flexible, offering both Ethernet and wired DMX inputs. Each unit also features either AC or DC power supply for flexible power inputs.



Mounting Adaptor

With the addition of the supplied mounting adaptor, ZeroWire CRMX can be safely attached to rigging clamps. A safety bond is also supported through cut outs in the metalwork.



Intuitive Software

Intuitive configuration software enables simple configuration of the ZeroWire CRMX units from your PC.

Network & Data Distribution

1 Universe Ethernet Box



Input or Output

The 1 Universe Ethernet Box can function as a DMX Input to an Ethernet network, or a DMX Output.



The 1 Universe Ethernet Box provides a single universe of DMX input or output to your Ethernet DMX distribution system. A universe of Art-Net DMX data can be output from the 1 Universe Ethernet Box to your lighting system.

The 1 Universe Ethernet Box is ideal for distributing DMX outputs wherever you need them, with its compact form factor and universal worldwide power supply. The unit is configured through an internal web server or via optional control software.

When combined with a ZerOS console, the 1 Universe Ethernet Box supports on-board configuration from the console, for a truly integrated system.

Whatever your lighting system, the 1 Universe Ethernet Box lets you place your DMX outputs wherever you need them.

Compact Form Factor

Designed to be easily deployed, the 1 Universe Ethernet Box's compact form factor allows you to place a DMX port anywhere you need one.



Configuration

The 1 Universe Ethernet Box can be configured from a standard Windows PC using the supplied configuration software.



Key Features

- Ethernet to 1 universe of DMX input or output
- Configuration via Web Browser or optional software
- Optional configuration from ZerOS consoles
- Grounded DMX outputs
- Dimensions: 60 (H) x 130 (W) x 40mm (D)
- Weight: 0.26Kg / 0.57lb

Split2.8 RDM



The Split2.8 RDM offers flexible DMX and RDM data distribution in a 19" format. The two DMX inputs can be split to any of the eight outputs. Each output is grounded and features an A/B switch for easy selection between the two DMX Inputs. Each input universe also provides Thru connectivity for further expansion. The flexibility of the Split2.8 RDM makes it equally appropriate for permanent installations and as a flexible, adaptable rental tool, providing buffered outputs of two separate DMX/RDM universes in one unit.

The Split2.8 RDM is fully compatible with the latest RDM protocol, ensuring your DMX distribution network is ready to meet your future demands. The slim 19" enclosure makes it ideal for use alongside the EtherN.8 RDM to build a larger data distribution system.

Permanent installations can make use of the two inputs to provide a low cost switchover between front of house and control room DMX feeds, without the need for patch cables.

Whatever your DMX system, Split2.8 RDM adds flexibility.

Key Features

- 2 input, 8 output DMX splitting
- Flexible output switching
- A/B switch on each DMX output
- Opto Isolated DMX Inputs
- Grounded DMX outputs
- Fully RDM compatible
- Desk Mount or 19" Form Factor
- Worldwide 90-250V AC Power supply
- Dimensions: 1RU (H) x 19" Rack (W) x 257mm (D)
- Weight: 2.0Kg / 4.4lb



Flexible Outputs

RDM outputs may be selected for Input A or Input B operation. Switch to the required input and that DMX cable becomes part of that universe.



RDM

For configuration and operational feedback from RDM devices, the Split2.8 RDM provides full RDM compatibility, making it an essential part of any RDM enabled lighting system.



Mounting Options

Provided with optional rack-mount ears, the Split2.8 RDM is suitable for desktop or 19" rack mounting.

Network & Data Distribution

EtherN.2 RDM



Wall Mounting

The EtherN.2 can be mounted in a standard UK double gang back box for permanent wall fixing.



RDM

For configuration and operational feedback from RDM devices, the EtherN.2 RDM provides full RDM compatibility, making it an essential part of any distributed RDM enabled lighting system.



Power over Ethernet

Simply connect the Ethernet cable and the unit is fully functional using Power over Ethernet - there is no need to run additional power from the wall socket.



EtherN.2 RDM provides two selectable universes of DMX and RDM output from your Ethernet system. Any two universes of Art-Net DMX/RDM data may be output from the EtherN.2 RDM to your lighting system. EtherN.2 RDM is designed for mounting within a UK double gang back box. The unit is configured through an internal web server or via optional control software.

The EtherN.2 RDM is fully compatible with the latest RDM protocol, ensuring your DMX distribution network is ready to meet your future demands. The wall mounting fixing makes it ideal for permanent installations, with units building up into a larger distributed data system. When combined with any ZerOS family console, the EtherN.2 RDM provides on-board configuration from the console, for a truly integrated system.

Whatever your lighting system, the EtherN.2 delivers data where you need it.

Key Features

- Ethernet to 2 universes of DMX
- Configuration via Web Browser
- Optional configuration from ZerOS consoles
- Grounded DMX outputs
- Fully RDM compatible
- UK Double Gang Wall Mounting
- Power over Ethernet
- Dimensions: 85mm (H) x 146mm (W) x 39mm (D)
- Weight: 0.21Kg

EtherN.8 RDM



EtherN.8 RDM offers flexible Ethernet to DMX and RDM data conversion in a 19" format. Up to 8 universes of Art-Net DMX/ RDM data can be output from the EtherN.8 RDM to your lighting system. The unit is configured through an internal web server or via optional control software. Simplicity is key to the EtherN.8 RDM.

The EtherN.8 RDM is fully compatible with the latest RDM protocol, ensuring your DMX distribution network is ready to meet your future demands. The slim 19" enclosure makes it ideal for combining with the Split2.8 RDM to build a larger data distribution system. When combined with any ZerOS family console, the EtherN.8 RDM provides on-board configuration from the console, for a truly integrated system.

Whatever your lighting system, the EtherN.8 RDM simplifies data distribution.

Key Features

- Ethernet to 8 universes of DMX
- Configuration via Web Browser
- Optional configuration from ZerOS consoles
- Grounded DMX outputs
- Fully RDM compatible
- Desk Mount or 19" Rack Mount Form Factor
- Worldwide 90-250V AC Power supply
- Dimensions: 1RU (H) x 19" Rack (W) x 257mm (D)
- Weight: 2.8Kg / 5.2lb



Up to 8 Universes

The EtherN.8 can be patched to output up to 4096 DMX channels. When combined with an ORB XF and 8 Universe license, this can double the capacity of your console.



RDM

For configuration and operational feedback from RDM devices, the EtherN.8 RDM provides full RDM compatibility, making it an essential part of any RDM enabled lighting system.



Mounting Options

Provided with optional Rack Mount ears, the EtherN.8 RDM is suitable for desktop or 19" Rack Mounting.

Introduction to Dimming

Dimming Basics



A dimmer is the part of the lighting system that connects to the mains supply and controls the amount of electricity going to each light.

Normally, each dimmer channel will have its own fuse or circuit breaker to offer protection against overload or electric shock.

Zero 88 make a range of dimmers including capacities at 6, 10, 16, 20 & 25 Amps.

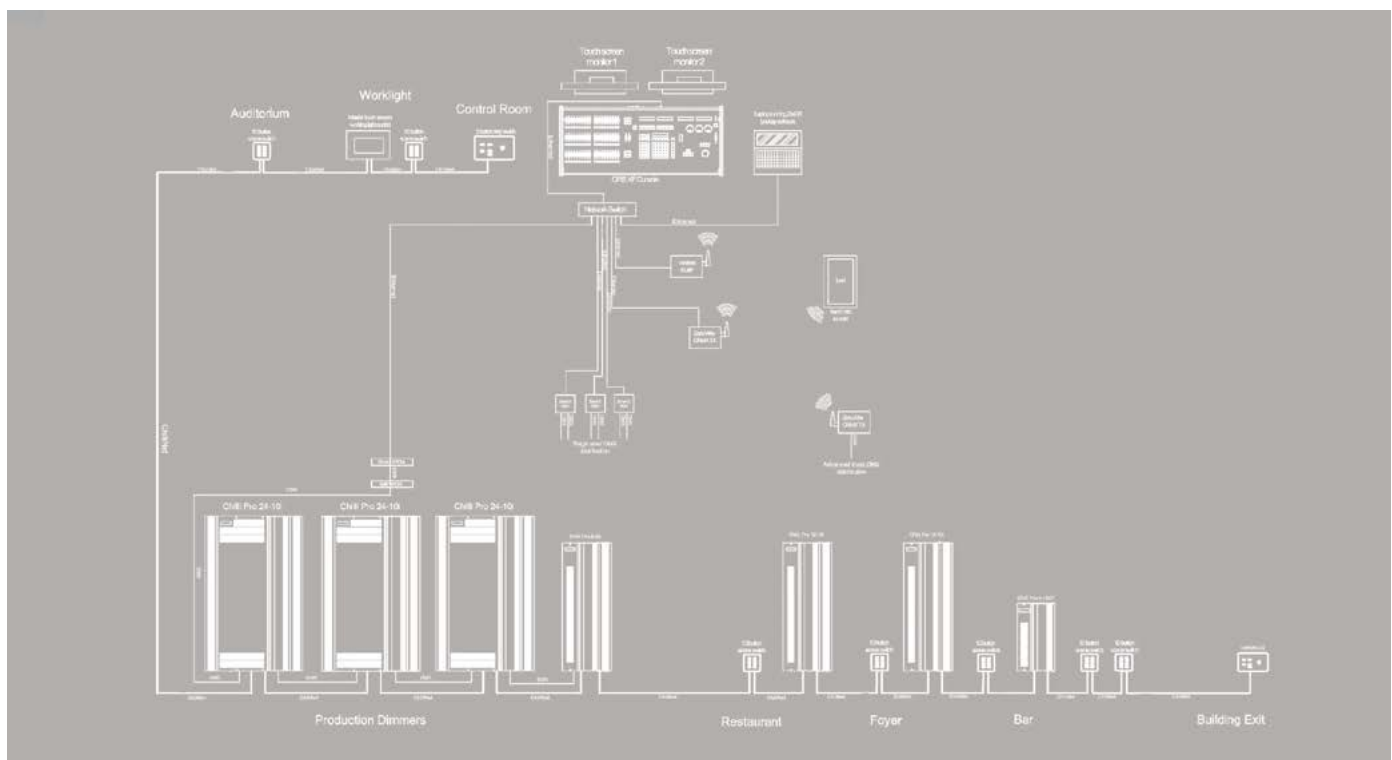
To calculate the dimmer loading – use the volts x amps = watts equation to work out what dimmer channel capacity you need based on the lamps you are using. Dimmers are normally used in blocks of 4 or 6 channels due to the ease of spreading the load across different phases.

In terms of the physical connections to the dimmers, there are many different choices available.

There are versions with 'hardwired' terminals, with an individual socket for each dimmer channel, and also there are 'multipole' connectors, which can carry many dimmer channels. The exact choice will depend on your application.

Most new systems will use DMX to connect the dimmers and control desk as this offers a flexible, reliable solution. RDM is increasingly popular as it provides remote response and set up information from remote dimmers across the DMX cable.

Visit our website zero88.com for more information and help with choosing what is right for you - we also recommend you talk to a performance lighting specialist for further help. We choose our Zero 88 dealers carefully and are confident the local dealers listed on our website will be happy to advise you further.



Product Selector

Product	Alphapack 3	Betapack 3	Rack 6	Spice 1210i	Chilli Pro	Chilli Pro HF	Chilli Pro Bypass
Description & Applications	3 channel portable dimmers with built in safety features and DMX control. Suitable for smaller applications requiring distributed dimming.	Excellent value 6 channel dimmers for multipurpose use. Rack Mount, freestanding or wall mount. (With a range of international socket options).	Compact multipurpose Rack Mount or freestanding 6 channel dimmer. (With a range of international socket options).	High specification dimmers in a tough 19" chassis. Ideal for rental companies and corporate events or applications requiring distributed dimming.	High specification dimmers for installation, available in 4, 6, 12 and 24 channel formats.	High specification dimmers for installation, available in 4, and 12 channel formats with DSI or analogue outputs.	High specification dimmers for installation, available in 24 channels with Bypass switches.
Channels	3	6	6	12	4, 6, 12, 24	4, 12	24
DMX	1 input + loop	1 input + loop	1 input + loop	1 input + loop	Terminal Block	Terminal Block	Terminal Block
Cooling	Convection	Convection	Fan	Fan	Convection	Convection	Convection
Form	Bar mount, Wall mount or Free Standing	Rack Mount, Wall mount or Free Standing	Rack Mount or Free Standing	Rack Mount or Free Standing	Permanent Installation	Permanent Installation	Permanent Installation
Max Load per channel:	6.3	10	10	10	10, 16, 25	10	10, 16
Input Power;							
Single Phase	✓	✓	✓	✓	✓	✓	✓
3 Phase		✓	✓	✓	✓ (not 4 channel)	✓ (not 4 channel)	✓
Input Voltage	230V 50/60Hz	230V 50/60Hz	230V 50/60Hz	230V 50/60Hz	230V 50/60Hz	230V 50/60Hz	230V 50/60Hz
RCD Option					✓ (not 4 channel)		✓
Protection	Fused	✓	✓	✓	✓	✓	✓
Memories		12 3 sequences	12 3 sequences	12 x 10 areas 3 sequences	12 x 10 areas 3 sequences	12 x 10 areas 3 sequences	12 x 10 areas 3 sequences
Architectural Wall Stations			✓	✓	✓	✓	✓
RDM Enabled		✓	✓		✓	✓	✓
Bypass Switches							✓
Lockable Door					✓ (24 Channel only)		✓



Installation Dimming Range

ChilliNet Installation Dimming Solution



Today's performance installations demand that lighting control intelligence can operate building wide; Chilli dimmers were designed from the start with this in mind and can deliver outstanding performance dimming.

ChilliNet intelligently synchronizes with the architectural lighting control needed for house light, work light, auditorium and public area lighting, used in bars, foyers and many other public spaces.

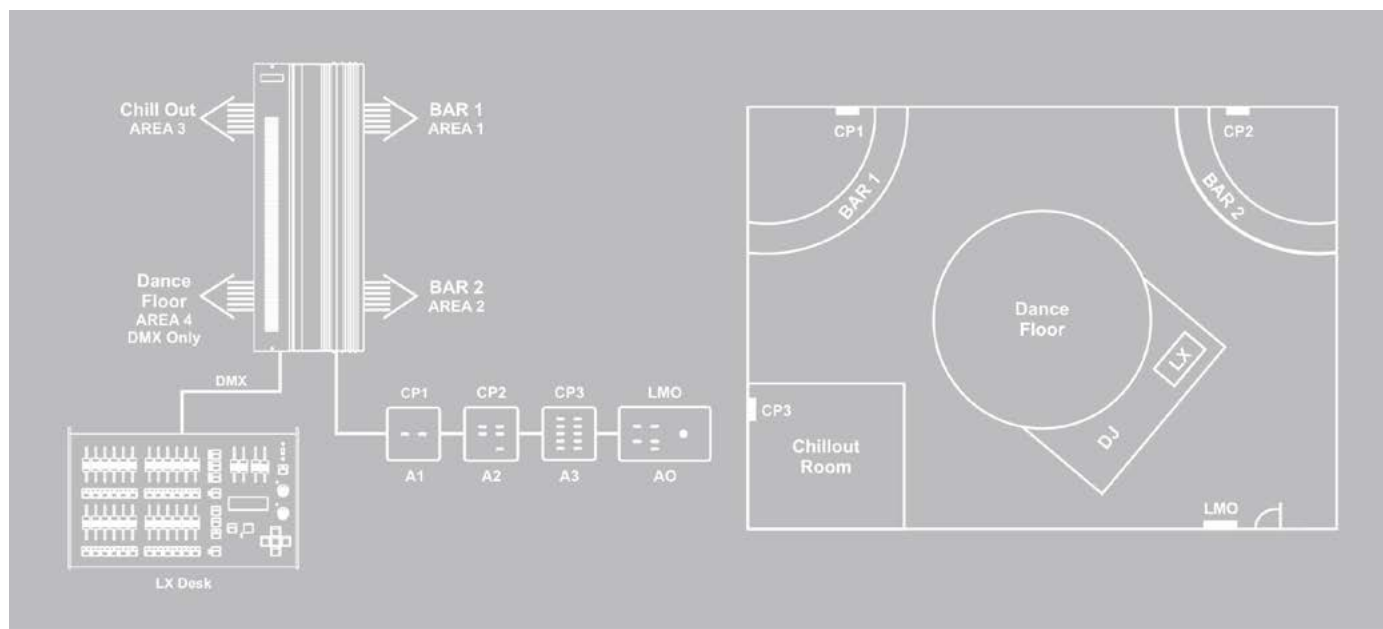
The ChilliNet network places the user firmly in control of the all the lighting in a performance space and allows them to set and resolve control priorities when combining performance and architectural lighting.

A wide range of user interface control panels can be installed on the building network to complete the powerful ChilliNet family. Panel options include button panels from 1 to 20 buttons, keyswitch panels and even customizable touch screen control panels - all delivered with a choice of fascia finish to match the building décor.

Chilli is a range of high density wall mounted convection cooled dimming. Quick to install and set up, easy to operate and maintain; Chilli dimmers are the workhorses of any hard working professional venue.

Chilli Inductive Dimmers are available in 4, 6, 12 and 24 channel dimming packages featuring 10, 16 and 25 Amp load capacities with optional RCD protection contained in a slim line wall mounting enclosure.

The 18 button user interface and backlit LCD screen on each dimmer ensure simple convenient set up for DMX patching, preheat, topset and dimmer curves and for peace of mind, the user interface and all breakers are also protected by a lockable breaker cover.



Chilli Inductive Dimmers



A choice of responses to DMX failure, backup memories, built in chases and an alarm input trigger complete the versatile Chilli dimming package.

24 channel Chilli dimmers may also be fitted with relay cards which enable new and existing users to add relays in place of regular dimmers where power switching is required. These 4 channel relay cards have been introduced in response to customer requests to control more non dim channels in both existing and new installations. Relay cards can be placed in any of 6 possible locations in the dimmer racks for added flexibility.

Chilli Pro 2410i and Chilli Pro 2416i dimmers are also available in bypass switches options, for use when direct mains power is needed.

Individual channels can be set for dimming or to deliver mains power for intelligent lights, LED light fittings and other stage specials allowing you to save wiring, simplify your set up and connect your lights exactly where you want them.

Key Features

- 10 Amp, 16 Amp and 25 Amp per channel dimmers
- Easy wall installation
- 100% duty cycle
- 4 dimmer laws selectable per channel
- User defined back up memory
- Preheat, Topset and DMX Addressing per Channel
- RDM Enabled
- Automatic frequency tracking
- MCB per channel
- Optional incoming supply RCD protection
- Simple User Interface
- Variable level channel test
- Built in, switchable, DMX line termination
- Common service applications need only a screwdriver
- Convection Cooling
- 12 memories per area
- 3 sequences
- 10 areas available
- DMX takes precedence

Chilli Pro 4-10i
Dimensions: 400 (H) x 220 (W) x 155mm (D)
Weight: 7.0Kg / 15.5lb

Chilli 12-10i (+ RCD option available)
Dimensions: 850 (H) x 325 (W) x 155mm (D)
Weight: 20.0Kg / 44lb

Chilli 12-16i (+ RCD option available)
Dimensions: 850 (H) x 325 (W) x 155mm (D)
Weight: 26.5Kg / 58.0lb

Chilli Pro 6-25i (+ RCD option available)
850 (H) x 325 (W) x 155mm (D)
Weight: 21.5Kg / 47.0lb

Chilli 24-10i (+ RCD option available)
Dimensions: 1000 (H) x 632 (W) x 155mm (D)
Weight: 47.0Kg / 103lb

Chilli 24-10i 1212, Chilli Pro 24-10i 1212
(+ RCD option available)
Dimensions: 1000 (H) x 632 (W) x 155mm (D)
Weight: 45.0Kg / 99lb

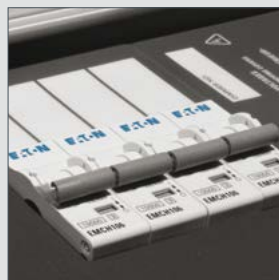
Chilli Pro 24-16i, Chilli Pro 24-16i 1212
(+ RCD option available)
Dimensions: 1000 (H) x 632 (W) x 155mm (D)
Weight: 47.5Kg / 105lb

Chilli Pro Bypass 24-10i, Chilli Pro Bypass 24-16i
(+ RCD option available)
Dimensions: 1000 (H) x 632 (W) x 155mm (D)
Weight: 49.5Kg / 109lb



User Interface

Commissioning of Chilli systems is performed through the simple user interface, built into every Chilli dimmer.



MCB Protection

Every circuit is protected by an MCB, with dual pole MCBs provided on Chilli Pro models.



RDM

Remote Device Management support is built in, with adjustment of dimmer configuration now possible from the control console.

Installation Dimming Range

Chilli HF Dimmers



User Interface

Commissioning of Chilli systems is performed through the simple user interface, built into every Chilli dimmer.



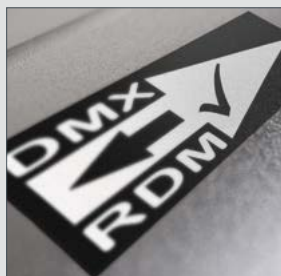
1-10v or DSI output

The low voltage outputs of a Chilli HF can be switched between 1-10v or DSI output.



RDM

Remote Device Management support is built in, with adjustment of dimmer configuration now possible from the control console.



Chilli HF Dimmers are available in 4 and 12 channel dimming packages featuring 10Amp load capacity with optional RCD protection contained in a slim line wall mounting enclosure.

These dimmers are ideal for fluorescent and LED lighting control using 0-10V, 1-10V and DSI ballasts. Each channel may be configured individually to allow a mix of ballasts. The associated relays may also be used for switch only control of non-dim loads.

The 18 button user interface and backlit LCD screen on each dimmer ensure simple convenient set up for DMX patching, preheat, topset and dimmer curves and for peace of mind, the user interface and all breakers are also protected by a lockable breaker cover.

A choice of responses to DMX failure, backup memories, built in chases and an alarm input trigger complete the versatile Chilli dimming package.

Key Features

- 10 Amp HF dimmers
- Easy wall installation
- 100% duty cycle
- 4 dimmer laws selectable per channel
- User defined back up memory
- DMX Addressing per Channel
- RDM Enabled
- Automatic frequency tracking
- Dual Pole MCB per channel
- Simple User Interface
- Built in, switchable, DMX line termination
- Common service applications need only a screwdriver
- Convection Cooling
- 12 memories per area
- 3 sequences
- 10 areas available
- DMX takes precedence
- DSI or Analogue Control Output

Chilli Pro 4-10HF

Dimensions: 400 (H) x 220 (W) x 155mm (D) Weight: 7.0Kg / 15.5lb

Chilli Pro 12-10HF

Dimensions: 850 (H) x 325 (W) x 155mm (D) Weight: 20.0Kg / 44lb

Chilli Control Panels



Chilli Control Panels

The Chilli Control Panels can be employed where simple scene setting is required. Available in a variety of configurations, the control panels provide direct access to the internal memories and sequences of the dimmer. Panels can be assigned to any one of the 10 areas.

Available in 2, 5 and 10 button configurations, the panels have been designed to fit any standard UK single gang back box, allowing simple installation. They are available in brushed stainless steel or brushed brass with illuminated buttons. Up to 50 Chilli Control Panels can be used on a single network, providing multi-point control with modern aesthetics.

A Last Man Out panel is also available. This panel features a 5 button control panel and a keyswitch, allowing for a supervisor to turn the network on or off from a single location. When the keyswitch is turned, after a 30 second delay, the panel sends an All Off command to the ChilliNet dimmers. The Last Man Out panel fits a standard UK double gang back box.

Key Features

Control Panels

- Slimline design
- Illuminated buttons
- Up to 4 panels per dimmer
- Controls multiple dimmers simultaneously
- Brushed stainless steel and brushed brass finishes
- Simple connections
- Uses standard CAT5 cable

Master Touch Screen

- Full dimmer remote control - all functions available
- Intelligent 'System Channel Mapping'
- Full Colour Touch Screen
- Simple connections
- Controls multiple dimmers simultaneously
- Can be used as a controller for any area

Control Panels

86 (H) x 86 (W) x 27.5mm (D)

Weight: 0.12Kg

Master Touch Screen

Dimensions: 145 (H) x 180 (W) x 60mm (D)

Weight: 2.0Kg

Netlink Bridge

94 (H) x 180 (W) x 57mm (D)

Weight: 0.25Kg

Last Man Out

86 (H) x 146 (W) x 27.5mm (D)

Weight: 0.25Kg

Chilli Master Touch Screen

The Chilli Master Touch Screen can be used with any combination of Chilli dimmers to provide full remote control and system monitoring. It uses an intuitive menu structure to allow for easy setting up of a ChilliNet network. This includes configuration of all functions of any dimmer on the network, as well as recording and playing back memories globally or for individual zones.

Using intelligent 'network mapping' the Chilli Master Touch Screen can be used to access system channel numbers directly, rather than working on a dimmer by dimmer basis. This means that channels can be quickly and logically addressed in large systems. This process can be done automated if desired.

Finally the implementation of a timeclock within the Chilli Master Touch Screen allows for events to be played back at specific times of the day.



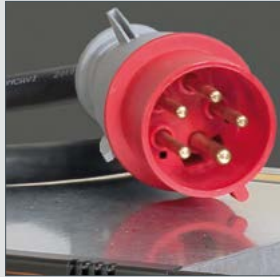
Portable Dimming Range

Spice 1210i



Plug & Play

Spice 1210i comes with a 63A 3 phase CEEform connector fitted, so it's ready to use right out of the box!



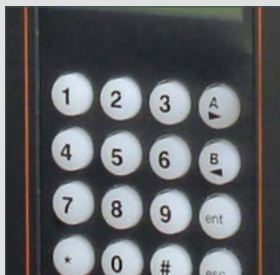
Rack Mounting

The racks can be mounted in standard 19" enclosures, for touring or installation purposes.



User Control

A simple user interface is provided on the front of the units to make configuration quick and easy.



Spice 1210i is a tough, supply tolerant, 19" 3U rack mounting dimmer designed to offer a professional range of features whilst retaining simplicity, reliability and affordability. Units are supplied complete and ready to use with either Harting or Socapex connectors and a CEEform 32 Amp connector and cable fitted.

Spice dimmers are found hard at work in the demanding environment of production and touring dimming as well as theatre, television and conference applications. When used in permanent installations the ChilliNet connectivity is an added bonus allowing the dimmers to be integrated as part of the architectural control system.

Key Features

- 12 Channels, 10 Amps per channel
- 100% Duty Cycle
- DMX Address: Addressable per channel
- Multiple Dimmer Curves, selectable by channel
- 12 on-board memories and 3 sequences, accessible via ChilliNet
- Topset & Preheat selectable per channel
- Operates on single phase, three-phase star
- Highly resilient supply protection
- DMX and ChilliNet Control
- Socapex and Harting output options
- Single pole plus Neutral thermal magnetic circuit breaker per channel
- Low-noise temperature controlled fans
- CEEform supply connector with 1.2m cable fitted as standard on multipole versions
- Dimensions: 132 (H) x 482 (W) x 420mm (D)
- Weight: 14.5Kg / 32.0lb

Spice Rack Systems



In addition to the individual Spice dimmers Zero 88 offers completely configured Spice touring racks. These are supplied as complete, 'ready to go' systems and are available with 24 or 48 channels. All system components are installed into professional quality flight cases with the choice of Harting or Socapex connectors.

Two types of system are available. Both are designed to withstand the rigours of the most demanding touring environments.

The Spice Eco Rack features a classic flight case, power distribution and CEEform 63 Amp Mains input.

The Spice Pro Racks also benefit from a full, industry standard, 1:2 patching system using 3 pole GST series connectors, and professional grade Connex power distribution components.

Key Features

- 24 or 48 x10A (2.3kVA)
- Preheat per channel
- Top Set per channel
- Full DMX patching
- 4 dimmer curves per channel
- 12 memories & 3 sequences for standalone operation
- 2 Spice 1210i Dimmers*
- Power Distribution with CEE 63A Mains Input
- 4 Outputs (6 ch. per outlet)
- Socapex or Harting connectors
- Custom racks available upon request

*Full Spice dimmer specifications can be found on the Spice 12-10i Datasheet.



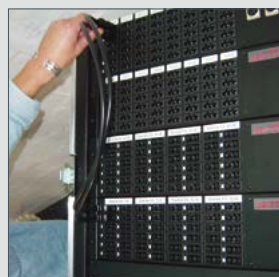
Rugged

Spice Racks are designed for touring, provided in high quality flight cases and finished with power distribution to complete the package.



Flexible

Spice Racks can be custom configured to your requirements - please get in touch if you have any specific requests.



Patchable

Spice racks are available with a hard patch bay and flexible socket options.

Portable Dimming Range

Betapack 3



Socket Options

Betapack 3 includes a wide range of socket options to match your installation – from standard CEE17 16Amp connectors to regional variants for local connector types.



Intuitive Operation

A simple integrated user interface provides the ability to override channels, set DMX addresses, as well as modify and replay internal memories and sequences.



RDM

Remote Device Management support is built right into the Betapack 3, providing facilities to set DMX addresses for each channel from a remote location.



The Betapack 3 range of 6 channel dimmer packs offers one of the most cost effective and versatile solutions to dimming currently available. Manufactured to the highest professional standards, this comprehensive range of convection cooled 6 x 10 Amp packs includes variants with sockets to match most global standards. Designed to be rack mounted, installed on a wall or carried, the Betapack 3 is suitable for a wide range of applications from amateur to professional, education to TV.

Betapack 3 series dimmers have served the lighting industry for nearly 20 years and remain a firm favourite in lighting rental, installation and portable applications. Based on tried and tested technology, these robust, reliable, digitally controlled dimmer packs are incredibly versatile. Whether it's for schools, theatres, or TV Studios worldwide, these dimmers provide the core component of lighting systems globally.

Key Features

- MCB protection
- Isolated DMX input
- Patchable per channel
- Preheat, Topset and Dimmer Law selectable per channel
- 12 backup memories
- 3 x 99-step sequences with adjustable times
- Automatic DMX termination when loop-through plug is removed
- RDM Enabled
- Auto frequency tracking
- Lock and Reset functions
- Temperature monitoring
- Convection cooled
- DMX addressing via front panel selectors
- DMX Status indication
- 19" Rack and Wall mounting brackets included
- Dimensions: 177 (H) x 447 (W) x 195mm (D)
- Weight: 8.0Kg / 17.5lb



The Betapack 3 range is supplied with MCBs on every channel, giving you peace of mind and maximum protection.

The versatility of the Betapack 3 means it can be 19" Rack Mount or installed on a wall using the brackets supplied, or made portable by adding the optional "Easicarry" kit consisting of a handle and four feet. Its legendary reliability and durability make it the dimmer of choice for many thousands of venues worldwide.



Rack Mount

Betapack 3 dimmers are designed to fit in standard 19" equipment racks, to allow them to be mounted alongside other rack mount equipment.



Location/Portable

Where rack mounting isn't ideal, an Easicarry Handle can be added to make the Betapack 3 a portable dimming pack.



Hard Wired

As well as a variety of socket options, Betapack 3 dimmers can be Hardwired for permanent installation.



Portable Dimming Range

Alphapack 3



Faders

Local control is provided by three internal faders on the unit, mixed highest takes precedence with the DMX input.



Flexible

The Alphapack 3 can now be set to any DMX address, providing the ideal mechanism to add three channels of dimming wherever there is a power outlet.



Overload Protection

The unique overload protection circuit ensures that the Alphapack 3 will never draw more than 10/13/16 Amps (factory set), providing piece of mind and added safety.



Alphapack 3 is a three channel portable dimmer unit, which can be safely secured to a vertical or horizontal bar by adding a standard clamp onto one of two new m10 mounting positions, or attached to a wall with the use of an additional mounting bracket (sold separately). One of our most popular dimmers, the Alphapack finds uses in all areas of the lighting industry. Rental, display, education, event services and live music users have all found the Alphapack to be a perfect solution. The local fader controls make the Alphapack 3 ideal for 'fit and forget' situations, as well as allowing use as a follow spot dimmer.

This compact and rugged unit has three faders for local control, or can be controlled remotely via DMX as part of a larger lighting system, providing maximum flexibility for a great price.

A unique safety system and overload protection circuit means that the Alphapack 3 provides an extremely safe and reliable solution to small dimming applications, never allowing the dimmer loads to draw more current than is available from the supply.

Key Features

- Three Dimming Channels
- 6.3 Amps per channel
- Three fader Local Control
- Overload protection circuit
- In and Thru Control Connections
- Channel Selection Switch with LED
- DMX Control (addressable between 1 - 512)
- Optional Mounting Bracket
- Dimensions: 85 (H) x 240 (W) x 315mm (D)
- Weight: 3.5Kg / 8.0lb

Rack 6



Rack 6 is a compact 2U 19" rack mounting digital dimmer which offers one of the most cost effective dimming solutions available. The Rack 6 range comprises a wide variety of socket variants according to regional requirements including Schuko, French, UK 15A, CEE17 and Dutch Harting sockets as well as standard Socapex and Harting multipin connectors, all housed in a fan cooled 6 x 10 Amp package.

Offering 12 memories, a preheat per channel, three dimmer curves and ChilliNet compatibility, these dimmers offer users features not usually found in a dimming products in this price range.

The Rack 6 dimming range is ideal for a wide variety of uses from permanent installations to mobile dimming.

Key Features

- 3 Dimmer curves
- 12 Memories
- Preheat per channel
- Socket options
- 6x10 Amps
- ChilliNet compatability
- RDM Enabled
- Dimensions: 88 (H) x 483 (W) x 360mm (D)
- Weight: 8.0Kg / 17.6lb



User Interface

The Rack 6 features an integral user interface to allow configuraton of DMX address, fade laws, preheats and topsets.



RDM

This product features Remote Device Management and can be configured from an RDM Controller such as an RDM enabled lighting desk.

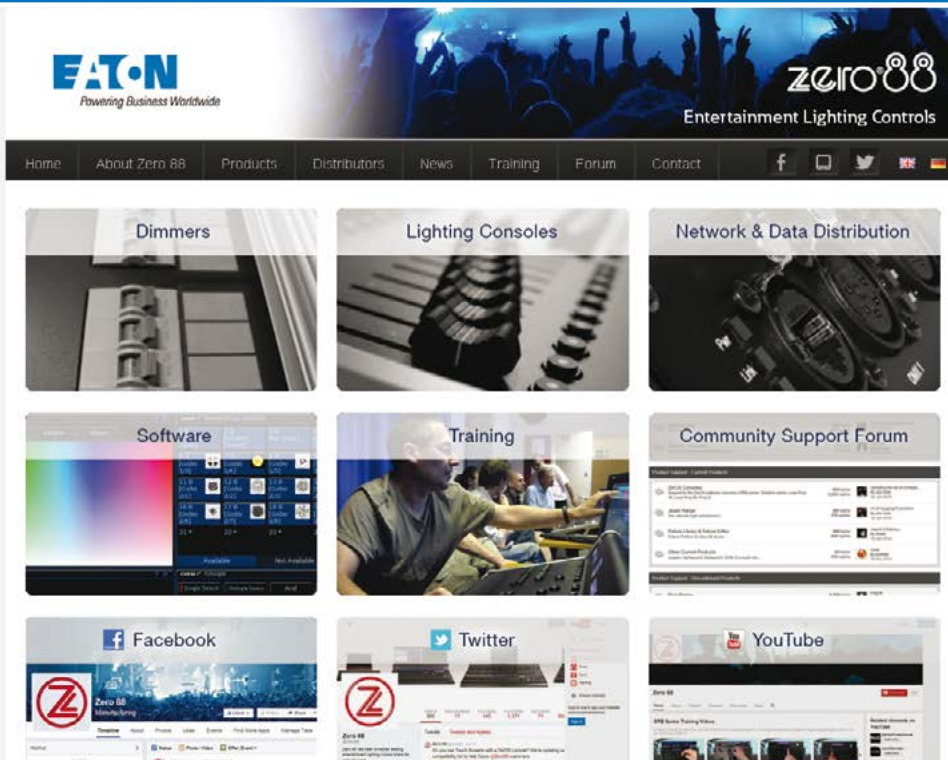


Connector Options

The Rack 6 offers a multitude of connector options to suit your local requirements.

Services & Support

Services



Free Product Training

Regular training courses are provided in our Cwmbran headquarters and at the Phoenix Artists club in London. Courses are free and include a light lunch. See zero88.com/training for availability and to book your place.



Zero 88 on the Web

The Zero 88 website, zero88.com, includes general information about our products, our distributors, latest news and contact information.

Available in both English and German, you can find product downloads, software updates and information regarding the latest training courses available.

It's also the home of our Community Support Forum, enabling Zero 88 staff, distributors and customers to help each other and access & share information effectively.

Onsite Product Training

Onsite training can be organised for all our current and legacy products. Contact us for more information and pricing.

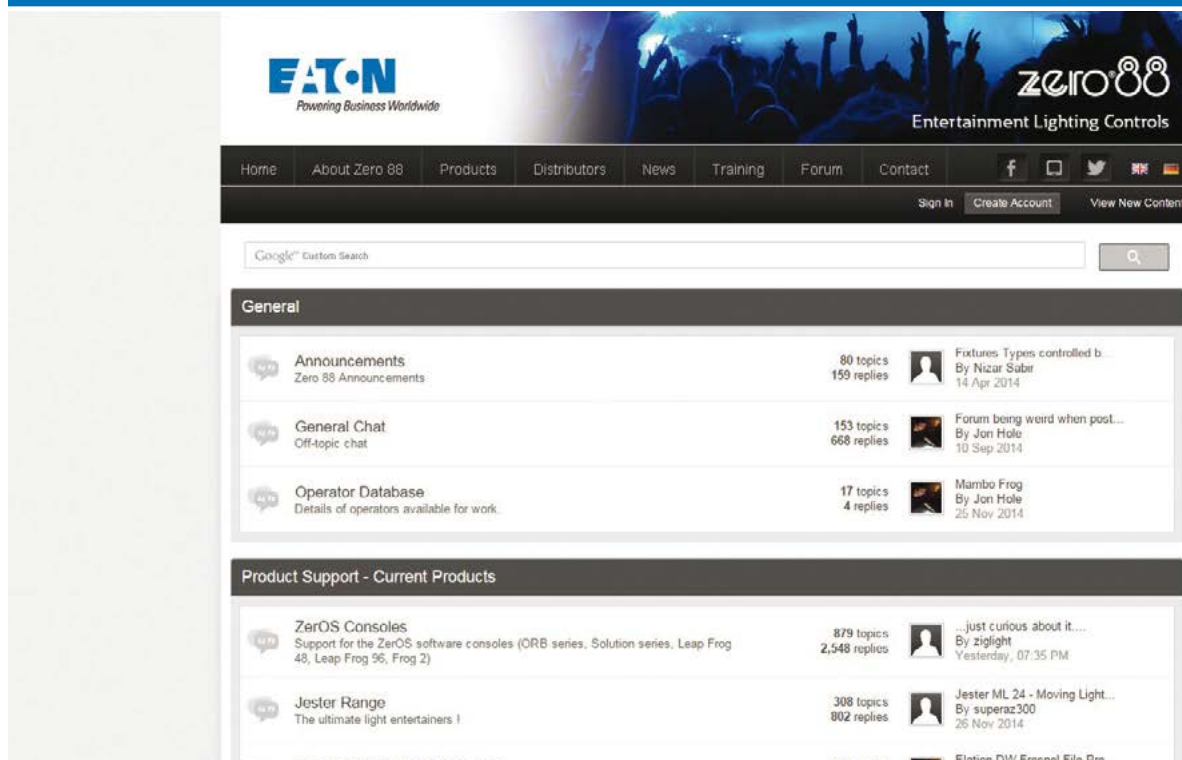


European and Worldwide

Training can be provided worldwide – contact your local regional Sales Manager or Zero 88 distributor for further information.



Support



Social Media

Zero 88 can also be found on Facebook, Twitter and YouTube. These sites are updated regularly with news, training and product usage tips as well as general information on what the Zero 88 team are doing. Find us online by typing in the links to the right.

Product Support Centre

This area provides a library of information for all our products; past and present. It includes downloadable product information including datasheets and manuals.

The support centre also hosts a dedicated product support forum for all our products.

Visitors can keep up to date with software releases, request new features, enquire about product selection or usage and keep in touch with other users. Visitors can also provide software feedback here and contribute to the development of new and future software releases.

Product Data Sheets

Each Zero 88 product has its own technical and data sheet. These can be downloaded from the support pages of our website.

Pictures Courtesy of the following:

hillekamp + weber architekturstudio · Nexos Lighting Technology · Louise Stickland · Mad Dogs Theatre Company · Paul Brown · Rose Bruford College · Nordic Rental · LightFactory · Light Converse · Ben M Rogers · Metronom Theater Oberhausen · Kühl-Beschallung Ritterhude · Oslo Opera & AVAB CAC · Dance Connection/Michael Pitts Photography · Nick Taylor Photography · Michael Brenkley Lighting Designer ·



Facebook

Like us on Facebook to keep up to date with the Zero 88 team and to find out about events and product updates through your news feed.

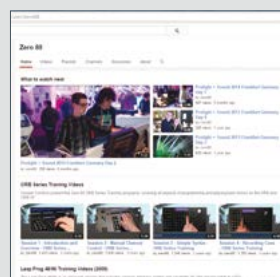
facebook.com/zero88



Twitter

Follow Zero 88 on twitter for instant access to our support team when you need them!

twitter.com/zero88



YouTube

Subscribe to our YouTube channel for training videos and product demos.

youtube.com/zero88

Glossary

A/B Crossfade

A pair of faders which allow crossfading from scene A to scene B.

Architectural

Lighting specifically for the built environment, often controlled from timed events on a schedule or control panels on the wall.

Architainment

The crossover between Architectural and Entertainment lighting. Often found in bars, clubs or on the facades of buildings.

Art-Net

An open-source lighting controls protocol designed by Artistic Licence. Art-Net allows for the transmission of DMX and RDM data over an Ethernet cable.

ASCII Show File

A standard file format to allow interchange of show files between different console manufacturers. This standard is maintained by USITT.

Busk

Operating a show using a number of live controls, such as submasters, to interact with the events on the stage as they happen.

Bypass

Dimmers including Bypass switches to allow individual channels to be set for mains dimming or to deliver mains to intelligent lights.

CEEform

A range of connectors which conform to the IEC 60309 standard. These are often used for exterior lighting due to the possibility of rating these connectors for outdoor use.

Chase

A series of scenes programmed to run automatically at a defined speed, to create a Crossfading Effect between different lights.

ChilliNet

The Architectural protocol used in Zero 88 dimmers. ChilliNet allows for 10 Areas of 12 Scenes within a network.

CMY

Cyan, Magenta, Yellow – the typical colour mixing system found in moving lights.

Colour Picker

A software tool which enables the selection of a colour using an on-screen display showing the full spectrum of colours. Colours are selected by clicking a mouse or touching on a touch screen display.

Command Line

An area of the console where instructions can be entered and are executed sequentially, using a standard syntax.

Console

A control device for a DMX lighting system, often with faders and wheels.

Control Wheels

A set of circular controls built into a Console which allow adjustment of parameters through the rotation of the control.

Conventional

A common word to describe a non-intelligent light such as a Parcan or Fresnel.

CRMX

The wireless radio technology used in ZeroWire CRMX.

Crossfade

A transition between one state and another, often automatically carried out by the processor inside the Console.

CSV

Comma Separated Value – a file format used to export data from ZerOS Consoles to allow manipulation in a spreadsheet application.

Cues

Scenes which can be stored on the Console and given a number. Also known as Memories, Presets and Looks.

Data Distribution

A term used to describe equipment which can split, combine, modify or route any Network data and then provide an Input or Output port.

Devices

Generically used to refer to any DMX enabled fixture or individual controllable light, such as a moving light, LED fixture or single Conventional channel.

Dimmer

A device which adjusts the brightness of a lamp, using external control signals to define the level.

Dimming

Changing the brightness of a lamp by adjusting the electricity flowing to it.

Dipless

A fade that happens between two levels without a noticeable reduction in brightness between the two points. Legacy analogue equipment used to suffer a noticeable 'dip' when fades ran – digital equipment does not suffer this.

DMX

Digital MultipleX – the control standard for the entertainment lighting industry. 512 channels of information are combined on a control cable, allowing for large and complex lighting systems to be controlled remotely.

Dynamic Lighting

Lighting that is constantly changing, or capable of changing. This is often used to enhance the environment in Architainment applications, as well as being used in purely Entertainment performances to build the atmosphere.

Effects

Programmable changes between set points, often used to create visually stunning movement or colour changes. Essential when creating Dynamic Lighting installations.

Effects System

A software feature which allows the creation of Effects.

Encoder Wheels

Circular controls found on premium lighting desks which allow precise control of parameters using a rotational motion to adjust the values.

Ethernet

A communications method used in many industries to transmit large quantities of data across a single cable. In our applications, Ethernet is used to transmit multiple Universes of DMX data.

Fade Time

The time used to Crossfade between one Cue and another.

Faders

A device that allows adjustment between two set values (nominally 0% to 100%) using a physical sliding motion.

Fixture Library

A database which describes to the Console how to use each of the Devices in a DMX system. This includes information about the channels in use by that fixture, as well as images of the Gobos.

Go

A button which is used to increment to the next Cue, using the programmed Fade Time.

Gobo

Conventionally a small metal pattern added to a light to give texture or image to a stage. ZerOS consoles can display an image of these gobos when using an intelligent fixture.

HSV

Hue, Saturation, Value. A colour mixing convention useful as it allows the adjustment of Saturation and Brightness without adjusting the end colour (Hue).

Lock

A function which can prevent access to certain menu items on a product unless an unlock code is entered.

Macros

A series of Command Line entries stored and recalled in sequence, to speed up programming.

MCB

Miniature Circuit Breaker. A device which sits in-line in an electrical circuit to restrict the maximum current available to connected loads. Similar to a fuse, but with a resettable switch.

Memory

Another name for a Cue – a scene stored and recalled in sequence throughout a show.

Memory Stick

A USB device used for storage of Show Files and other computer data.

MIDI

Musical Instrument Digital Interface – a standard for communicating between musical instruments, using a 5pin DIN connector. Now used to allow interconnection of many entertainment products.

Move On Dark

The ability for a Console to automatically preset an intelligent fixture based on it's next job in the Cue list. Once a light fades off, it automatically fades to the next value, ready to fade up when required.

Moving Lights

A lighting fixture which can be adjusted remotely to move position in both the Pan and Tilt parameters. Often these fixtures incorporate colour mixing, Gobos and other parameters.

Multi Function Faders

Faders which can be assigned within the software to a number of different functions.

Multi Function Keys

Keys (also known as Buttons) which can be assigned within the software to a number of different functions.

Network

An interconnected system of control devices which can talk between one another to establish a unified control system. Generally Network refers to an Ethernet system, but can be used to describe a DMX Data Distribution system as well.

Numeric Keypad

An array of keys arranged in such a way that Command Line syntax can be entered using numbers, @, AND, EXCEPT and THRU keys.

Offline Editing

A software tool to allow the editing of the Show File on a PC instead of the physical Console. This allows a full simulation of the Console behaviour, including monitor screens and the front panel.

Opto Isolated

A method of protecting control devices from electrical faults which happen downstream on the cable.

Overload Protection

An electrical circuit designed to prevent a Dimmer from overloading the Power Distribution.

Palettes

A small piece of information stored about an intelligent fixture to allow speedy programming and recreation of defined 'looks'. Often used for Position, to save time adjusting Encoder Wheels each time a position is required.

Patch

A linking method for linking Console channels to Dimmers. This can be either Physical (using patch cables) or Soft (using software to adjust DMX Addresses).

Pause

A function of the Cue stack to stop a Crossfade midway through the fade.

Playback Stacks

The location of Cues within most Consoles.

Power Distribution

Electrical devices mounted in enclosures and designed to allow large power feeds to be split into multiple smaller power connectors. Used to connect Dimmers and other accessories to large mains supplies.

Prepatch

The act of creating a Patch on a Console prior to beginning work on the show.

RCD

Residual Current Device – a protective device designed to detect Earth-Leakage and break the circuit. Some countries require these to be fitted in certain circumstances.

RDM

Remote Device Management. An industry protocol expanding the DMX protocol to allow bi-directional communication between the Console and connected Devices, enabling configuration and monitoring from within the Console software.

RGB

Red, Green, Blue. A colour mixing method used to adjust the colour of devices, especially LED fixtures.

sACN

Streaming-ACN. An industry protocol to enable the transport of DMX data over an Ethernet system. Unlike Art-Net, Streaming-ACN was developed by an independent industry body.

Sequence

A series of scenes which are played back sequentially to create a chasing Effect. Sequences don't allow extensive configuration, unlike Cues and Chases.

Show File

A file stored on a Console (and optionally backed up onto a USB device) which contains the data required to create and run the show currently being worked on.

SMPTE

A data format for timecode information to be transported into the Console. This allows audio visual equipment to be synchronised with the entertainment lighting.

Splitter

A device used to obtain several separate DMX feeds from the same DMX cable. DMX does not allow 'Y-splitting', so a Splitter must be used to split the signal.

Submasters

Faders with scenes stored on them. These can be adjusted by raising and lowering the fader, allowing for Busking.

Syntax Keys

Keys on a Console which follow your Command Line and adjust according to the functions available at the specific point in the command.

Touchscreen

A screen fitted with a touch sensitive membrane to allow selection of on-screen elements using a finger or other pointing device.

Trackball

A spherical device capable of adjustment of on-screen pointers or position parameters of Moving Lights.

Tracking

A programming method which allows only changes to be programmed between Cues, rather than full scenes. This method enables broad updates to be made quickly and easily throughout the Show File.

Tracking Backup

A method of backup for Consoles where a second Console (or Offline Editor) is connected to an Ethernet system and synchronises it's Show File to maintain a constantly running secondary copy of the show. In the event that the first Console is removed from the network (due to a power failure, software failure or other event), the second Console can then resume control of the show with little or no disruption to the operator.

Universe

A DMX universe is considered to be one set of 512 channels (one DMX output) from a Console. For more channels, multiple Universes can be used.

Unlock Dongle

A USB device that can be connected to a device to unlock additional functionality. These are generally small devices, similar to a Memory Stick.

USB

Universal Serial Bus – a computing standard to allow connection of multiple serial devices to a processor using standardised connectors and communications. USB can be used for the connection of Touchscreens, Memory Sticks, Desk Lamps and other devices.

User Interface

The part of a product that you interact with – often formed from a combination of buttons and a display.

Visualisation Software

Specialist lighting software designed to simulate the behaviour of a lighting system using 3D technology.

XLR

A multipin connector used for carrying various signals in the entertainment industry. The 5 pin variant is used for DMX data, whilst the 3 pin generally carries audio signals.

ZerOS

The operating software for all premium level products from Zero 88.

Eaton's electrical business is a global leader with expertise in power distribution and circuit protection; backup power protection; control and automation; lighting and security; structural solutions and wiring devices; solutions for harsh and hazardous environments; and engineering services. Eaton is positioned through its global solutions to answer today's most critical electrical power management challenges.

Eaton is a power management company with 2013 sales of \$22.0 billion. Eaton provides energy-efficient solutions that help our customers effectively manage electrical, hydraulic and mechanical power more efficiently, safely and sustainably. Eaton has approximately 103,000 employees and sells products to customers in more than 175 countries. For more information, visit www.eaton.com.

Contact your local Eaton office

Usk House, Lakeside,
Llantarnam Park, Cwmbran, NP44 3HD. UK
T: +44 (0)1633 838088
F: +44 (0)1633 867880
E: enquiries@zero88.com
www.zero88.com

Eaton's Cooper Controls Business
20 Greenhill Crescent
Watford Business Park
Watford, Herts
WD18 8JA. UK

T: +44 (0)1923 495496
F: +44 (0)1923 228796
E: enquiries@coopercontrols.co.uk
www.coopercontrol.com

Eaton Industries Manufacturing GmbH
Electrical Sector EMEA
Route de la Longeraie
71110 Morges, Switzerland
Eaton.eu

© Copyright 2015
Eaton's Cooper Controls Business
All Rights Reserved

Stock Number: 73-992-00 Issue: 22.0

Changes to the products, to the information contained in this document, and to prices are reserved; so are errors and omissions.

Eaton is a registered trademark.

All other trademarks are property of their respective owners.



An ISO 9001:2008
accredited company



Awarded to:
Cooper Industries (UK) Ltd